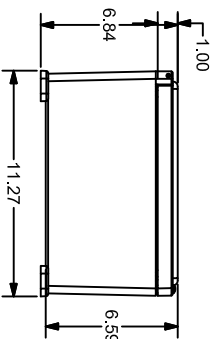
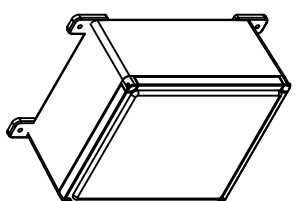
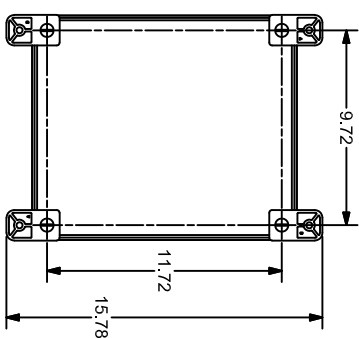
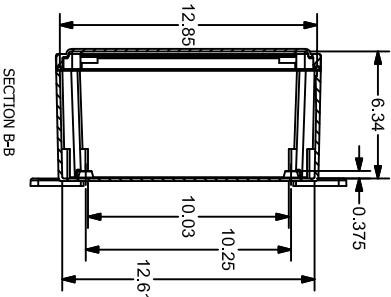
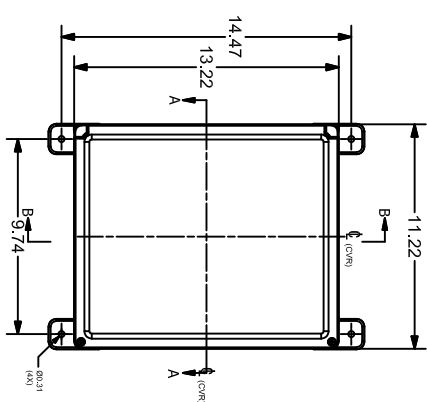
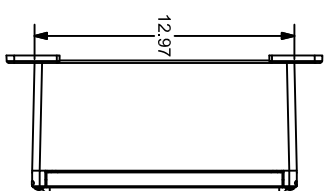


FOR REFERENCE ONLY
MOUNTING FEET SHOWN AS INSTALLED



3rd
ANGLE

NOT TO
SCALE

PART DIMENSIONS MAY DIFFER SLIGHTLY
DUE TO MANUFACTURERS VARIANCES

METRIC UNITS USED
FOR PART DESIGN

UNLESS OTHERWISE
SPECIFIED UNITS ARE:

inch
[mm]

LATEST VERSION
1/27/2023

SHEET 1 OF 1

STAHLIN CLASSIC SERIES ENCLOSURE, NEMA 1/3/3S/3R/4X/12, 13 X 11 X 6IN (HXVXD), WALL MOUNT, FIBERGLASS REINFORCED
POLYESTER, GRAY, CROWNED HINGED SCREW COVER.

CL1311HW

AutomationDirect.com
1-800-633-0405