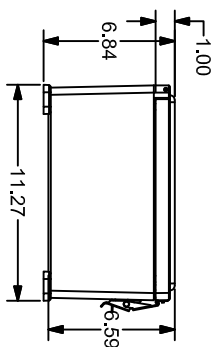
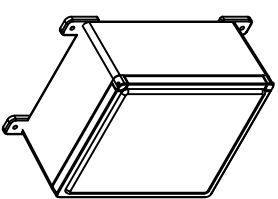
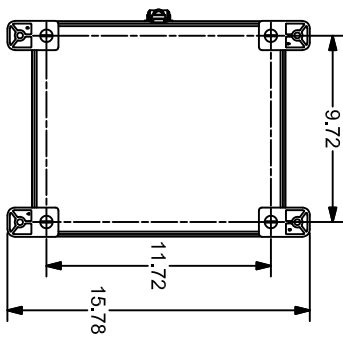
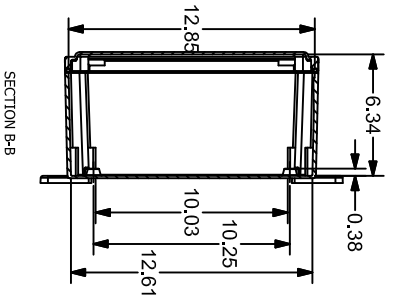
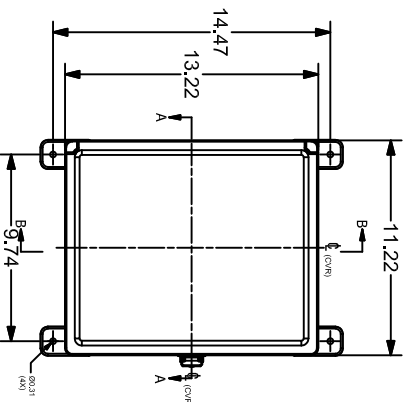
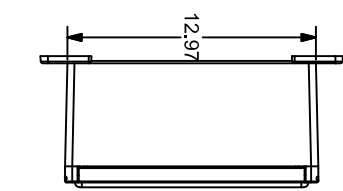


FOR REFERENCE ONLY  
MOUNTING FEET SHOWN AS INSTALLED



3rd  
ANGLE

NOT TO  
SCALE

PART DIMENSIONS MAY DIFFER SLIGHTLY  
DUE TO MANUFACTURER'S VARIANCES

METRIC UNITS USED  
FOR PART DESIGN

UNLESS OTHERWISE  
SPECIFIED UNITS ARE:

inch

[mm]

LATEST VERSION

SHEET 1 OF 1

STAHLIN CLASSIC SERIES ENCLOSURE, NEMA 1/3/3S/3B/4X/12, 13 X 11 X 6 IN (HXVXD), WALL MOUNT, FIBERGLASS REINFORCED  
POLYESTER, GRAY, CROWNED SINGLE-DOOR, (1) QUICK-RELEASE LATCH, PADLOCK HASP AND STAPLE.

CL1311HPL

AutomationDirect.com  
1-800-633-0405