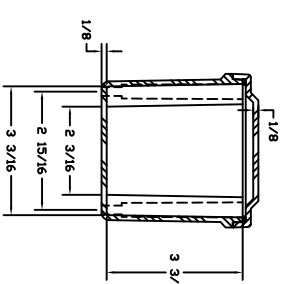
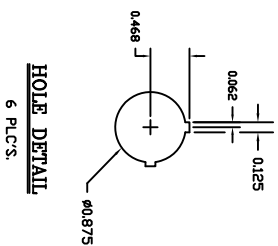
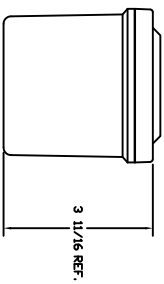


SECTION B-B




SECTION A-A

STAHLIN CF SERIES PUSHBUTTON ENCLOSURE, 6 HOLES, 22MM, NEMA 1/3R/4X/6P/12, 11 X 4 X 4IN (HXWXD), WALL MOUNT, FIBERGLASS REINFORCED POLYESTER, GRAY, SCREW COVER

CF6PB22

AutomationDirect.com
1-800-633-0405

	3rd ANGLE	NOT TO SCALE	PART DIMENSIONS MAY DIFFER SLIGHTLY DUE TO MANUFACTURERS VARIANCES	METRIC UNITS USED FOR PART DESIGN	UNLESS OTHERWISE SPECIFIED UNITS ARE:	inch [mm]	LATEST VERSION 1/27/2023	SHEET 1 OF 1
--	--------------	-----------------	---	--------------------------------------	--	--------------	-----------------------------	--------------