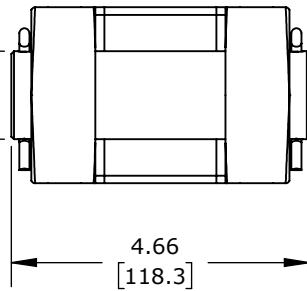


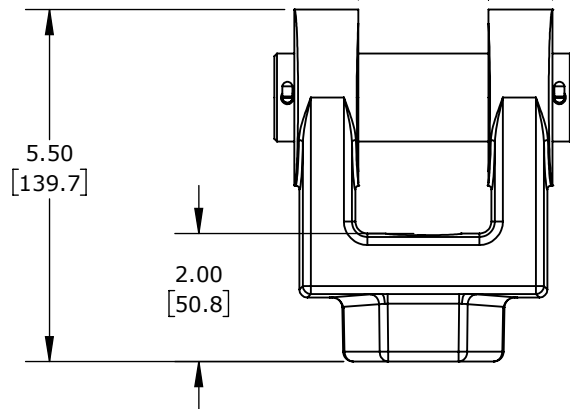
Ø1.38
[34.9]



4.66
[118.3]

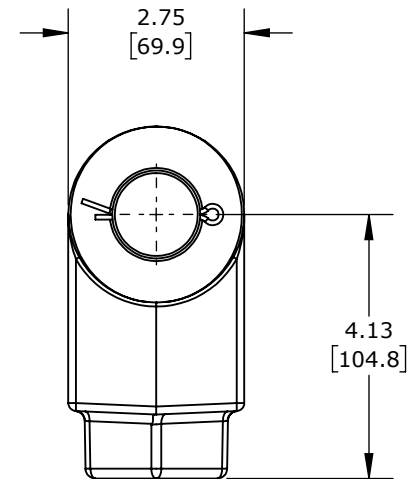
2.03
[51.6]

1.00
[25.4]



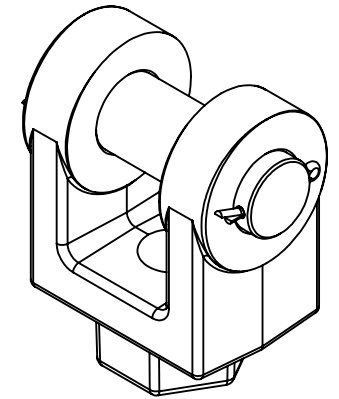
5.50
[139.7]

2.00
[50.8]

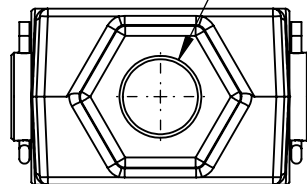


2.75
[69.9]

4.13
[104.8]



1.25-12
THREAD



PENINSULAR ROD CLEVIS, FOR 1.75IN ROD

C1600-86

AutomationDirect.com
1-800-633-0405



3rd
ANGLE

NOT TO
SCALE

PART DIMENSIONS MAY DIFFER SLIGHTLY
DUE TO MANUFACTURER'S VARIANCES

INCH UNITS USED FOR
PART DESIGN

UNLESS OTHERWISE
SPECIFIED UNITS ARE:

inch
[mm]

LATEST VERSION
7/20/2022

SHEET 1 OF 1