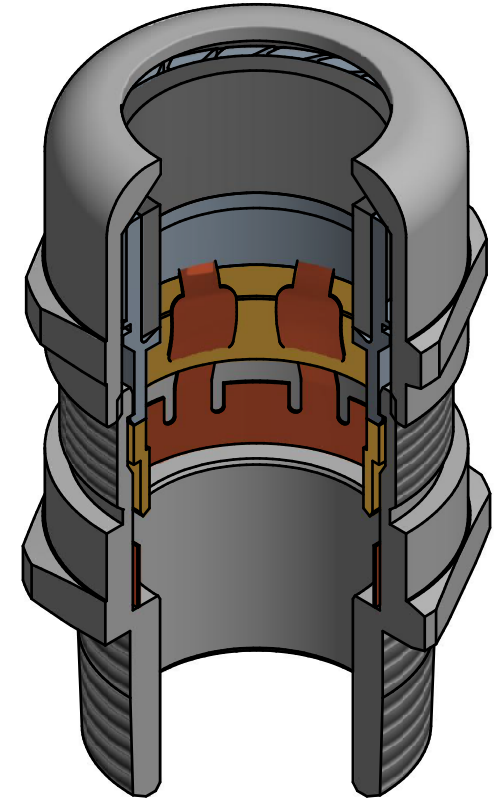
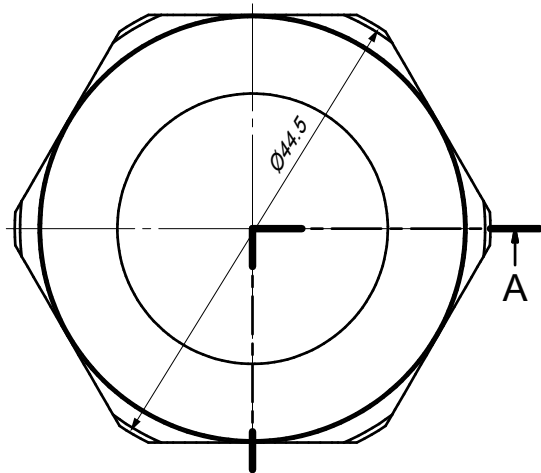


A-A



CLAMPING RANGE Ø16.0 - 25.0 [0.63 - 0.98]
SHIELDING DIAMETER 12.0 - 20.0 [0.47 - 0.79]

6	1	PG 29 GLANDS CAP (4. VERSION)	Brass (Nickel Plated)
5	1	PG 29 SEAL	CR
4	1	PG 29 PLASTIC INSERT (4.VERSION)	PA6 V2
3	1	PG 29/M32 EMC PRESSURE RING	Brass (Nickel Plated)
2	1	PG 29/M32 EMC SPRING	CuBe (Tin Plated)
1	1	PG 29/NPT 1" EMC GLAND BODY (TL20)	Brass (Nickel Plated)
No/Nu.	Qty/Ad.	Part Name/Parça Adı	Material/Malzeme
Part List / Parça Listesi			

Revision Revizyon	No Nu.	Letter Harfi	Date Tarih	Realised By Gerçekleştiren	Required By İsteyen	Aproved By Onaylayan
----------------------	-----------	-----------------	---------------	-------------------------------	------------------------	-------------------------

Drawing Number / Resim No	-	NPT 1" EMC RAKOR (PG29) TL20				
Reference Number / Ref. No	-	NPT 1" EMC CABLE GLAND (PG29) TL20				
Bimed Code / Bimed Kodu	BNEM-E4 (NPT1"T)	Date / Tarih	Signature / İmza	Material / Malzeme	Mass / Ağırlık	229,487 g
Customer Code / Müşteri Kodu	-	12.12.2012	-	-	Mass / Ağırlık	229,487 g
Designed by / Tasarlayan	Nursel ORAL	-	-	-	Mass / Ağırlık	229,487 g
Drawn by / Çizen	Mustafa KOCAOĞLU	-	-	-	Mass / Ağırlık	229,487 g
Approved by / Onaylayan	Yılmaz ALBUKREK	-	-	-	Mass / Ağırlık	229,487 g
Scale / Ölçek	Form	bimed				
2:1	A3	bimed				
Scale / Ölçek		Form	bimed			
2:1		A3	bimed			
Scale / Ölçek		Form	bimed			
2:1		A3	bimed			