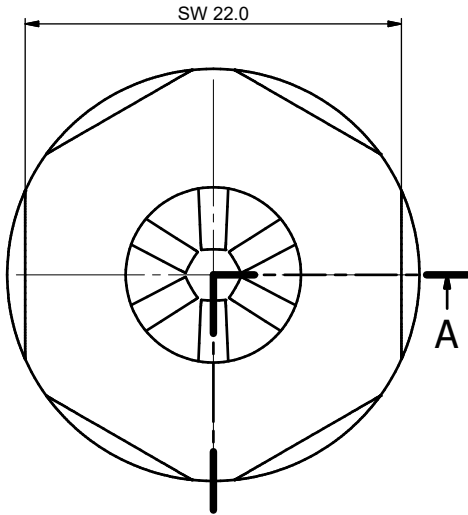


A-A

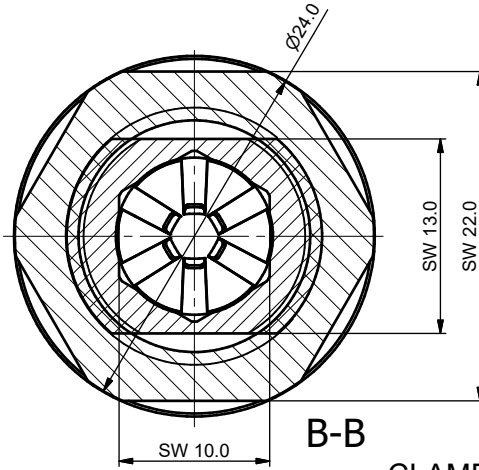


A

Thread Type
N=NPT threaded

Serie Designation
E=EMC Gland

Material
1=303 (1.4305 AISI 303)
2=304 (1.4301 AISI 304)
3=304L (1.4307 AISI 304L)
4=316 (1.4401 AISI 316)
5=316L (1.4404 AISI 316L)



B-B

Revision History / Revizyon Tarihçesi					
No Nu.	Date Tarih	Request No Talep Nu.	Revision Revizyon	Realised By Gerçekleştiren	Approved By Onaylayan
2	09.10.2019	2530	Body and washer designs have been changed. Gövde ve rondela tasarımı değiştirildi.	M.KOÇAOĞLU	N.ORAL

Thread Type
N=NPT threaded

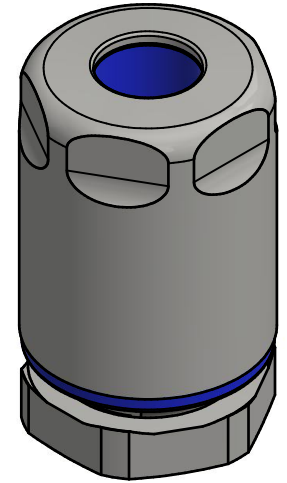
Serie Designation
E=EMC Gland

Material
1=303 (1.4305 AISI 303)
2=304 (1.4301 AISI 304)
3=304L (1.4307 AISI 304L)
4=316 (1.4401 AISI 316)
5=316L (1.4404 AISI 316L)

Gland Sizes
01=NPT3/8"



Thread length
(optional)
(if not standard TL)

Accessory Code
L=Locknut
(Locknut is mandatory for NPT threads)



CLAMPING RANGE= min.Ø5.0 - max.Ø10.0mm

No/Nu.	Qty/Ad.	Part Name/Parça Adı	Material/Malzeme
10	1	NPSL 3/8" EMC LOCKNUT	Stainless Steel
9	1	M20 HYGIENIC GLAND SEAL WASHER	EPDM (Food Contact Grade)
8	1	M20 HYGIENIC GLAND PISTON RING INOX	Stainless Spring Steel
7	1	NPT 3/8" EMC HYGIENIC GLAND BODY TL10 INOX	Stainless Steel
6	1	M16 EMC HYGIENIC GLAND PRESSURE RING INOX	Stainless Steel
5	1	M16 EMC HYGIENIC GLAND SPRING	CuBe (Tin Plated)
4	1	M16 EMC HYGIENIC GLAND CABLE CLAMPING RING	POM(Hostaform C13031)
3	1	M16 HYGIENIC GLAND CONICAL RING INOX	Stainless Steel
2	1	M16 HYGIENIC GLAND SEAL	EPDM (Food Contact Grade)
1	1	NPT 3/8" EMC HYGIENIC GLAND CAP INOX	Stainless Steel
Part List / Parça Listesi			

Drawing Number / Resim No	11268	Reference Number / Ref. No	-	Date / Tarih													
1st Disci.Request #/Y.Yn.Tal.No	2378	Designed by / Tasarlayan	Mustafa KOCAOĞLU	19.07.2019													
Bimed Code / Bimed Kodu	BNEHG1-01-L	Approved by / Onaylayan	Nursel ORAL	19.07.2019													
NPT 3/8" EMC HYGIENIC GLAND TL10 INOX WITH LOCKNUT				Material / Malzeme	<div>Undefined Tolerances acc.to/ Belirtilmeyen Toleranslar (DIN 7168-f)</div> <table><tr><th>Nominal size ranges Anma ölçü aralıkları</th><th>Value Değer</th></tr><tr><td>0.5s...s3</td><td>±0,05</td></tr><tr><td>3<...s6</td><td>±0,05</td></tr><tr><td>6<...s30</td><td>±0,10</td></tr><tr><td>30<...s120</td><td>±0,15</td></tr><tr><td>120<...s400</td><td>±0,20</td></tr></table>	Nominal size ranges Anma ölçü aralıkları	Value Değer	0.5s...s3	±0,05	3<...s6	±0,05	6<...s30	±0,10	30<...s120	±0,15	120<...s400	±0,20
Nominal size ranges Anma ölçü aralıkları	Value Değer																
0.5s...s3	±0,05																
3<...s6	±0,05																
6<...s30	±0,10																
30<...s120	±0,15																
120<...s400	±0,20																
NPT 3/8" EMC HİJYENİK RAKOR TL10 INOX SOMUNLU																	
	Volume/Hacim	Mass / Ağırlık	-														
	11518 mm^3	-															