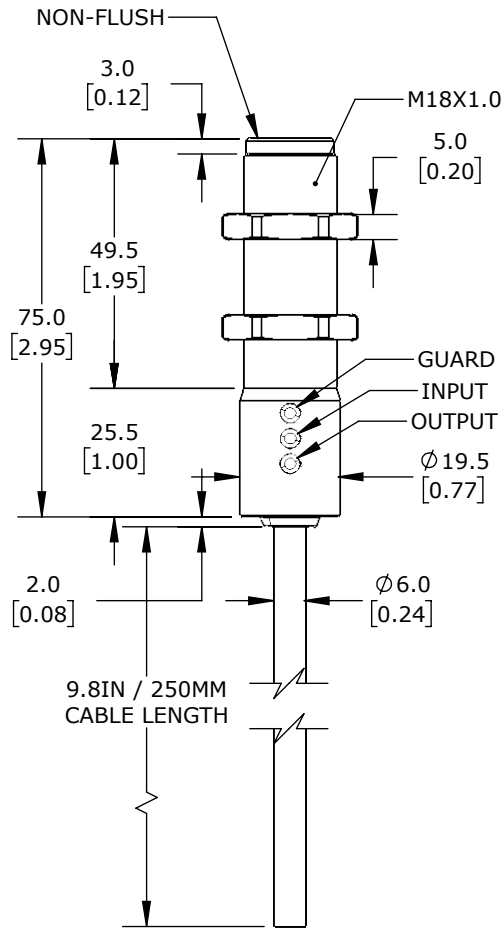
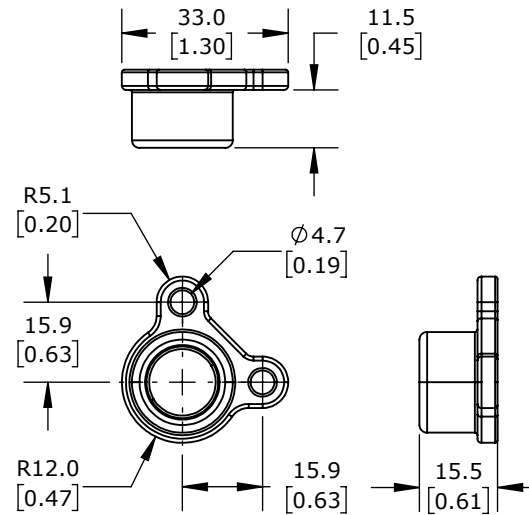


ISOMETRIC VIEW  
( SET )



SWITCH



ACTUATOR

IDEM Z-RANGE SAFETY SWITCH SET, NON-CONTACT UNIQUELY CODED RFID, (2) OSSD SAFETY OUTPUT(S), (1) STATUS MONITORING OUTPUT(S), 316 STAINLESS STEEL HOUSING, 18MM DIAMETER X 73MM BODY, 8-PIN M12 QUICK-DISCONNECT, 9.8IN/250MM CABLE LENGTH.

**BMZ-U-411103**

AutomationDirect.com  
1-800-633-0405



3rd  
ANGLE

NOT TO  
SCALE

PART DIMENSIONS MAY DIFFER SLIGHTLY  
DUE TO MANUFACTURER'S VARIANCES

METRIC UNITS USED  
FOR PART DESIGN

UNLESS OTHERWISE  
SPECIFIED UNITS ARE:

**mm**  
[inch]

LATEST VERSION  
9/13/2023

SHEET 1 OF 1