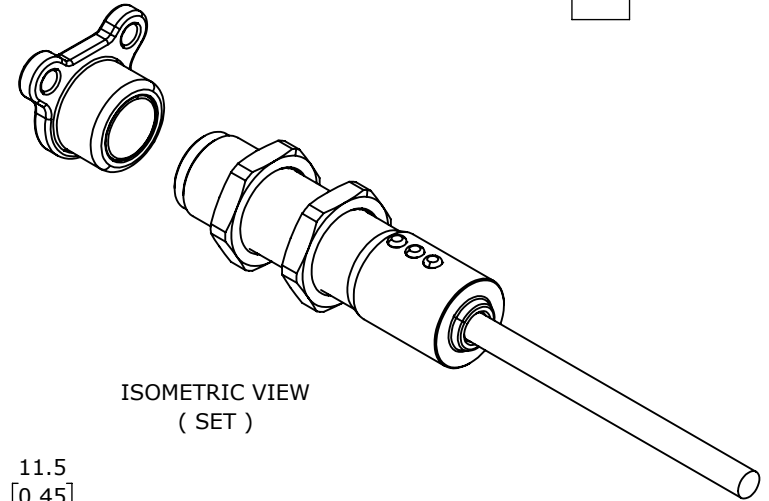
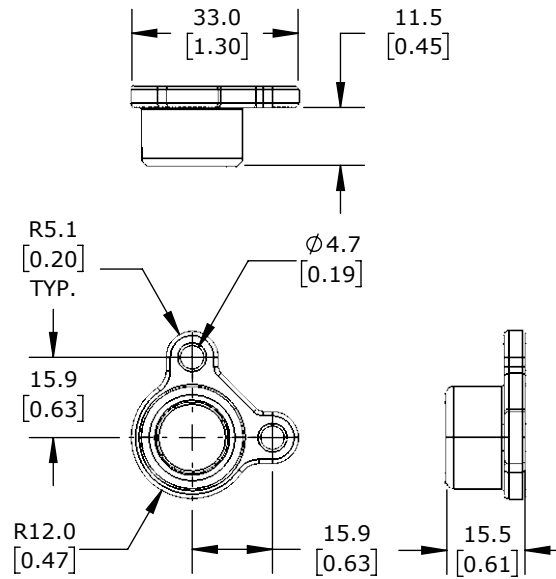


SWITCH



ISOMETRIC VIEW
(SET)



ACTUATOR

IDEM Z-RANGE SAFETY SWITCH SET, NON-CONTACT MASTER CODED RFID, (2) OSSD SAFETY OUTPUT(S), (1) STATUS MONITORING OUTPUT(S), 316 STAINLESS STEEL HOUSING, 18MM DIAMETER X 73MM BODY, 8-PIN M12 QUICK-DISCONNECT, 9.8IN/250MM CABLE LENGTH.

BMZ-M-411003

AutomationDirect.com
1-800-633-0405



3rd
ANGLE

NOT TO
SCALE

PART DIMENSIONS MAY DIFFER SLIGHTLY
DUE TO MANUFACTURER'S VARIANCES

METRIC UNITS USED
FOR PART DESIGN

UNLESS OTHERWISE
SPECIFIED UNITS ARE:

mm
[inch]

LATEST VERSION
9/13/2023

SHEET 1 OF 1