

**B M HG 1 - OS (6,0) - L**

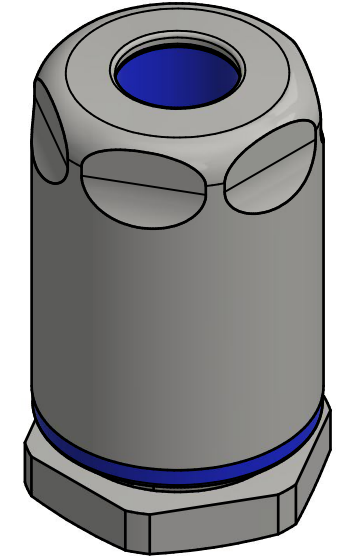
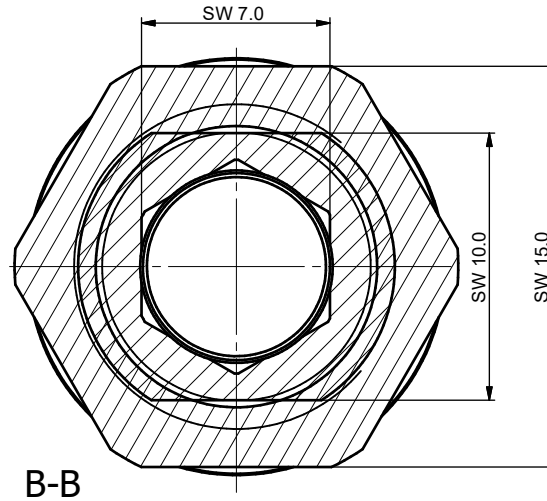
**Thread Type**  
M=Metric thread

**Material**  
1=303 (1.4305 AISI 303)  
2=304 (1.4301 AISI 304)  
3=304L (1.4307 AISI 304L)  
4=316 (1.4401 AISI 316)  
5=316L (1.4404 AISI 316L)

**Gland Sizes**  
OS=M12

**Thread length**  
(optional)  
(if not standard TL)

**Accessory Code**  
Blank=Without locknut  
L=With locknut



CLAMPING RANGE= min.Ø3.0 - max.Ø6.5mm

9	1	M12x1.5 LOCKNUT	Stainless Steel
8	1	M12 HYGIENIC GLAND SEAL WASHER	EPDM(Food Contact Grade)
7	1	M12 HYGIENIC GLAND PISTON RING INOX	Stainless Spring Steel
6	1	M12x1.5 HYGIENIC GLAND BODY TL6 INOX	Stainless Steel
5	1	M12 HYGIENIC GLAND PRESSURE RING INOX	Stainless Steel
4	1	M12 HYGIENIC GLAND CABLE CLAMPING RING	POM(Hostaform C13031)
3	1	M12 HYGIENIC GLAND CONICAL RING INOX	Stainless Steel
2	1	M12 HYGIENIC GLAND SEAL	EPDM(Food Contact Grade)
1	1	M12 HYGIENIC GLAND CAP	Stainless Steel
No/Nu.	Qty/Ad.	Part Name/Parça Adı	Material/Malzeme
Part List / Parça Listesi			

Drawing Number / Resim No	11170	Reference Number / Ref. No	-	Date / Tarih	12.07.2019
1st Discl.Request #/Y.Yn.Tal.No	2378	Designed by / Tasarlayan	Mustafa KOCAOĞLU	12.07.2019	
Bimed Code / Bimed Kodu	BMHG1-OS-L	Approved by / Onaylayan	Nursel ORAL	12.07.2019	
M12x1.5 HYGIENIC GLAND TL6 INOX WITH LOCKNUT			Material / Malzeme		
M12x1.5 HİJYENİK RAKOR TL6 INOX SOMUNLU					
bimed			Volume/Hacim	Mass / Ağırlık	
			3388 mm³	-	
			Material / Malzeme		
			Undefined Tolerances acc.to/ Belirtilmeyen Toleranslar (DIN 7168-f)		
			Nominal size ranges Anma ölçü aralıkları	Value Değer	
			0.5<...≤3	±0,05	
			3<...≤6	±0,05	
			6<...≤30	±0,10	
			30<...≤120	±0,15	
			120<...≤400	±0,20	