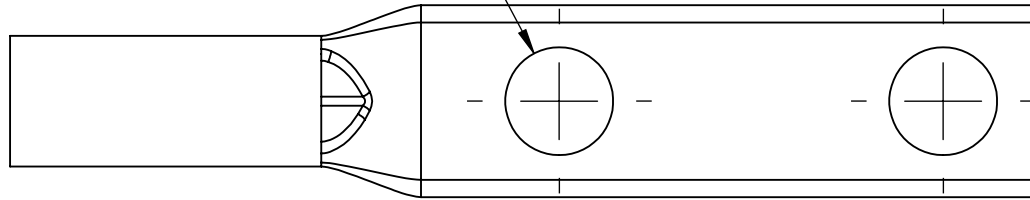
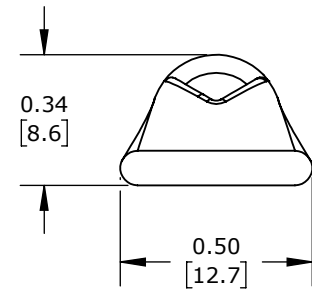
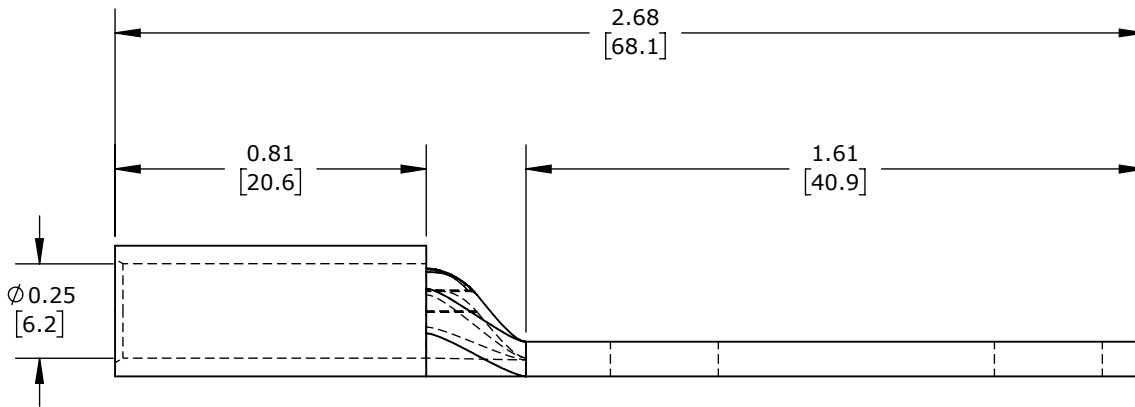
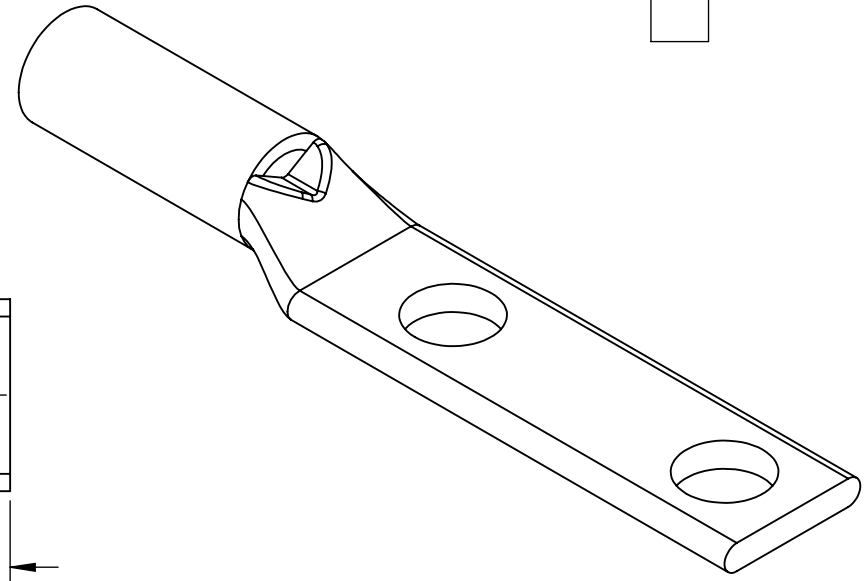


Ø0.28
[7.1]
THRU X2



1.00 [25.4]
0.25 [6.4]



STANDARD BARREL, TIN-PLATED COPPER, 35 KV, 1/4IN MOUNTING BOLT, 2 HOLE, 1IN HOLE SPACING, 4 AWG, GRAY MARKINGS.

PENN UNION COMPRESSION LUG

BLU-4D-2TC14E1-1

AutomationDirect.com
1-800-633-0405



3rd
ANGLE

NOT TO
SCALE

PART DIMENSIONS MAY DIFFER SLIGHTLY
DUE TO MANUFACTURER'S VARIANCES

INCH UNITS USED FOR
PART DESIGN

UNLESS OTHERWISE
SPECIFIED UNITS ARE:

inch
[mm]

LATEST VERSION
9/9/2024

SHEET 1 OF 1