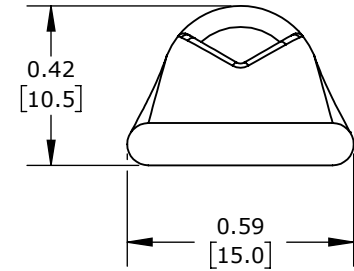
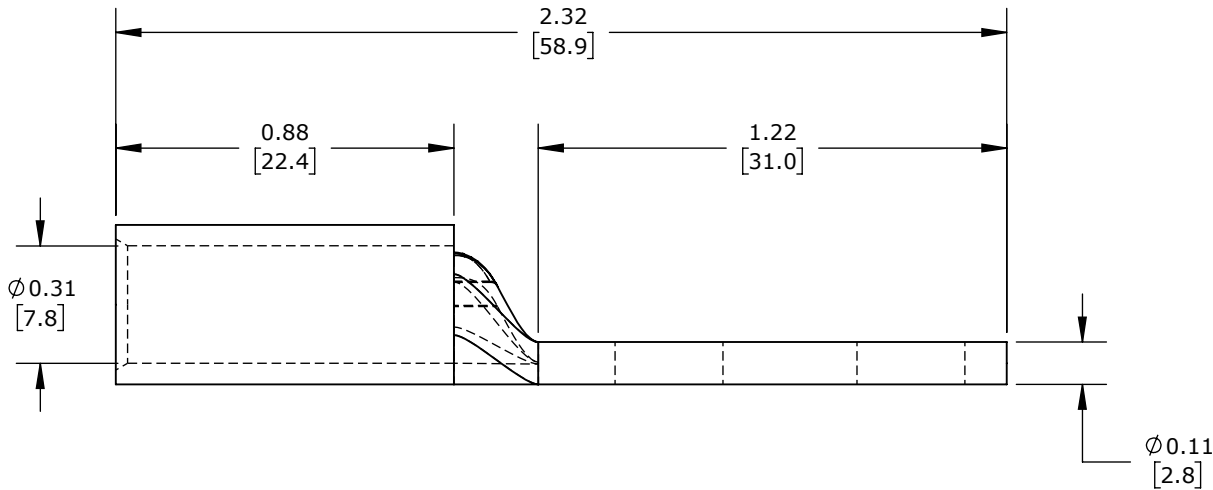
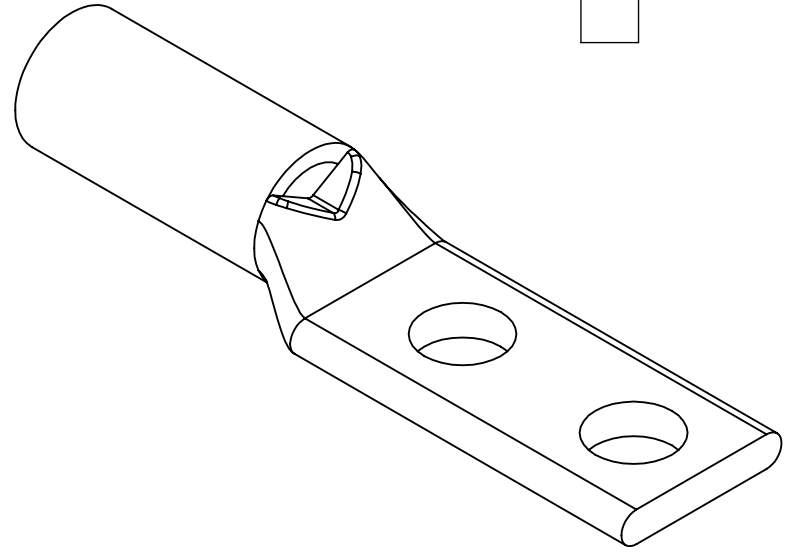
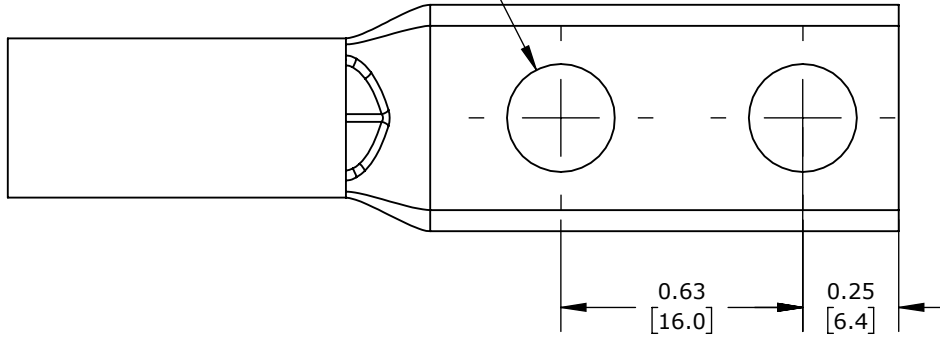


$\varnothing 0.28$
 [7.1]
 THRU X2



STANDARD BARREL, TIN-PLATED COPPER, 35 KV, 1/4IN MOUNTING
 BOLT, 2 HOLE, 0.63IN HOLE SPACING, 2 AWG, BROWN MARKINGS.

PENN UNION COMPRESSION LUG

BLU-2D-2TC14-1

AutomationDirect.com
 1-800-633-0405



3rd
ANGLE

NOT TO
SCALE

PART DIMENSIONS MAY DIFFER SLIGHTLY
DUE TO MANUFACTURER'S VARIANCES

INCH UNITS USED FOR
PART DESIGN

UNLESS OTHERWISE
SPECIFIED UNITS ARE:

inch
[mm]

LATEST VERSION
9/9/2024

SHEET 1 OF 1