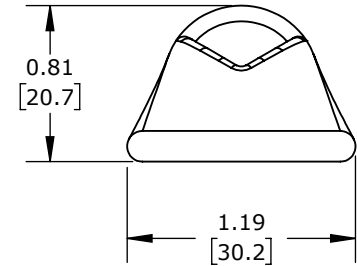
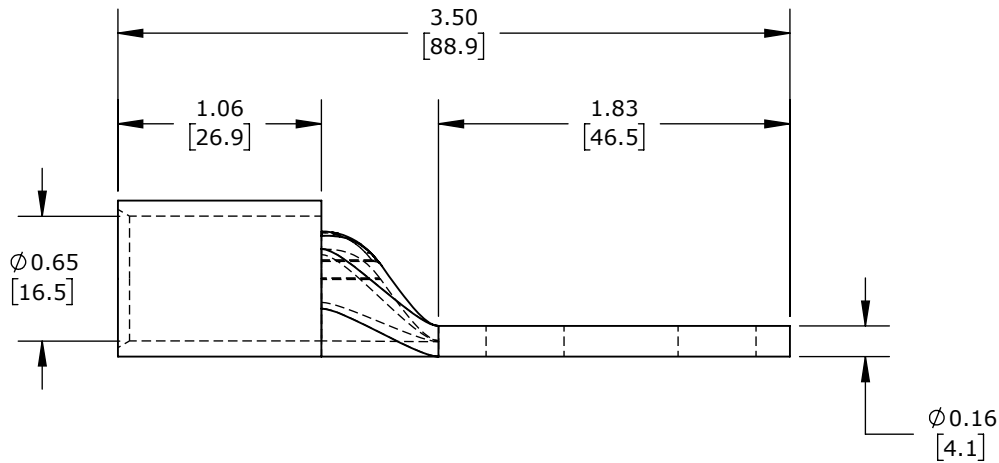
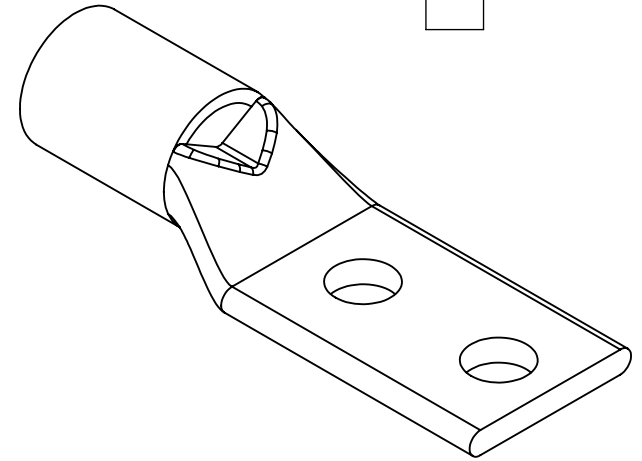
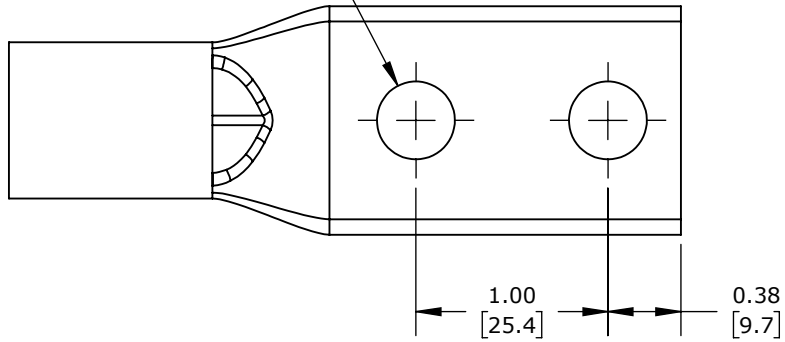


Ø 0.41  
[10.3]  
THRU X2



STANDARD BARREL, TIN-PLATED COPPER, 35 KV, 3/8IN MOUNTING BOLT, 2 HOLE, 1IN HOLE SPACING, 300 MCM, WHITE MARKINGS.

**PENN UNION COMPRESSION LUG**

**BLU-030D-2TC38-1**

AutomationDirect.com  
1-800-633-0405



3rd  
ANGLE

NOT TO  
SCALE

PART DIMENSIONS MAY DIFFER SLIGHTLY  
DUE TO MANUFACTURER'S VARIANCES

INCH UNITS USED FOR  
PART DESIGN

UNLESS OTHERWISE  
SPECIFIED UNITS ARE:

**inch**  
**[mm]**

LATEST VERSION  
9/9/2024

SHEET 1 OF 1