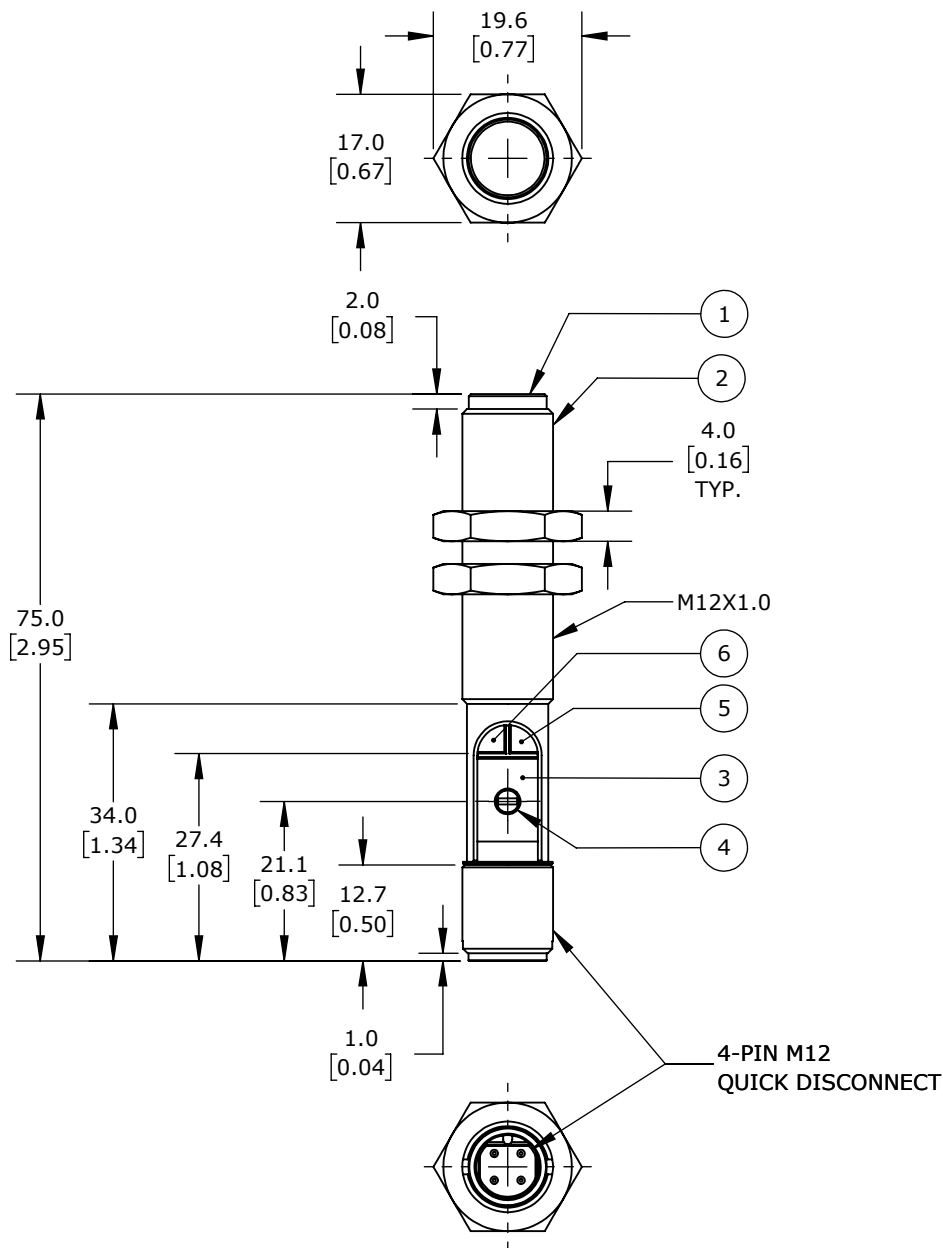


TECHNICAL INFORMATION

- 1.) SENSING SURFACE
- 2.) HOUSING
- 3.) COVER
- 4.) POTENTIOMETER
- 5.) LED POWER
- 6.) LED FUNCTION INDICATOR



ISOMETRIC VIEW

BALLUFF CAPACITIVE PROXIMITY SENSOR, TUBULAR, 12MM DIAMETER X 75MM BODY, POLYBUTYLENE TEREPHTHALATE HOUSING, PNP, N.O., 4MM SENSING DISTANCE, FLUSH, 100 HZ SWITCHING FREQUENCY, IP67, 4-PIN M12 QUICK-DISCONNECT.

BCS00PJ

AutomationDirect.com
1-800-633-0405



3rd
ANGLE

NOT TO
SCALE

PART DIMENSIONS MAY DIFFER SLIGHTLY
DUE TO MANUFACTURER'S VARIANCES

METRIC UNITS USED
FOR PART DESIGN

UNLESS OTHERWISE
SPECIFIED UNITS ARE:

mm
[inch]

LATEST VERSION
7/20/2023

SHEET 1 OF 1