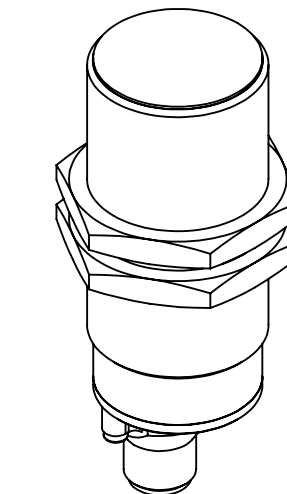
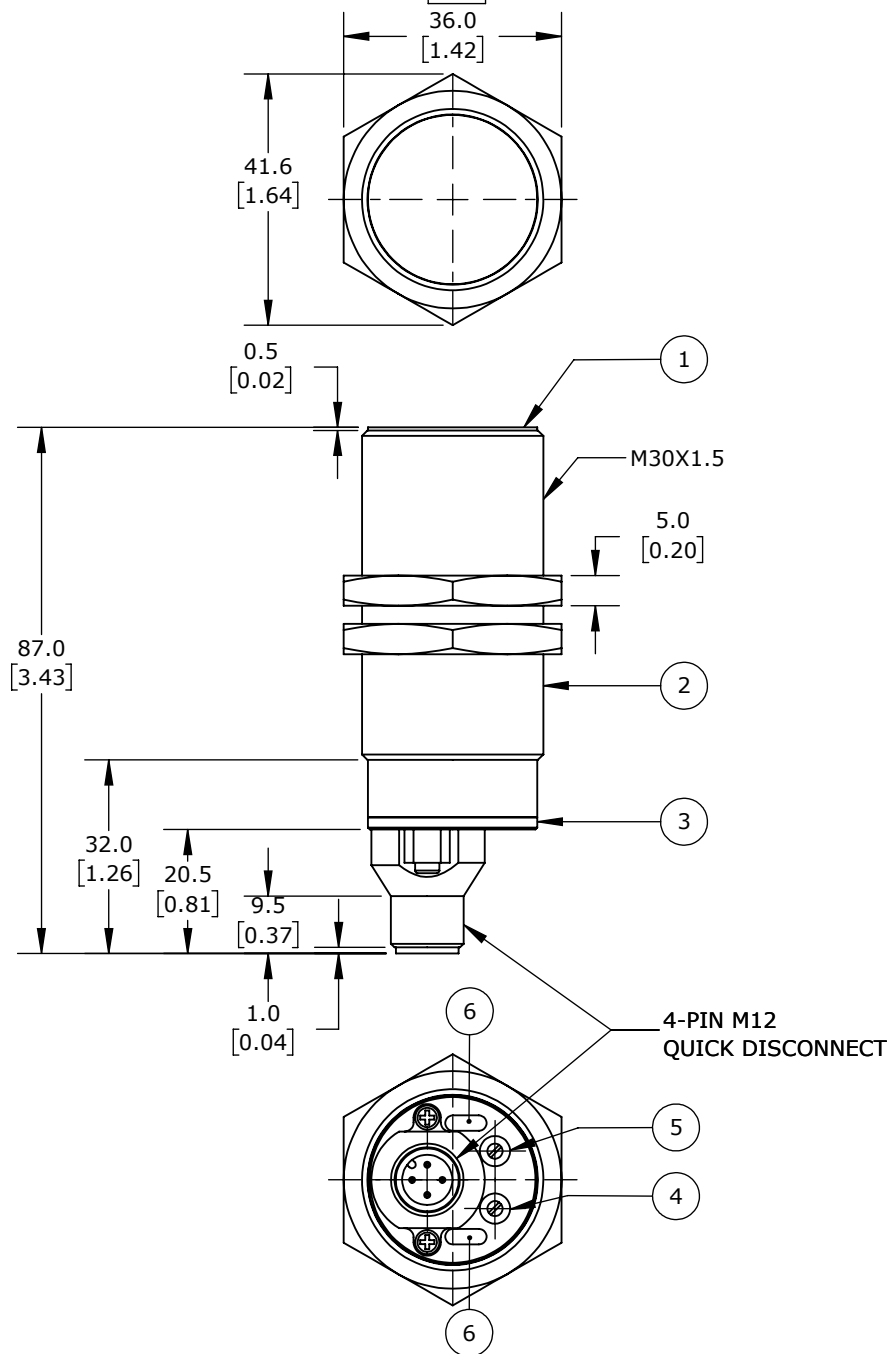


TECHNICAL INFORMATION

- 1.) SENSING SURFACE
- 2.) HOUSING
- 3.) COVER
- 4.) POTENTIOMETER
- 5.) LED POWER
- 6.) LED FUNCTION INDICATOR



ISOMETRIC VIEW

BALLUFF CAPACITIVE PROXIMITY SENSOR, TUBULAR, 30MM DIAMETER X 87MM BODY, STAINLESS STEEL HOUSING, PNP, N.O./N.C. SELECTABLE, 20MM SENSING DISTANCE, FLUSH, 100 HZ SWITCHING FREQUENCY, IP66, 4-PIN M12 QUICK-DISCONNECT.

BCS004T

AutomationDirect.com
1-800-633-0405



3rd
ANGLE

NOT TO
SCALE

PART DIMENSIONS MAY DIFFER SLIGHTLY
DUE TO MANUFACTURER'S VARIANCES

METRIC UNITS USED
FOR PART DESIGN

UNLESS OTHERWISE
SPECIFIED UNITS ARE:

mm
[inch]

LATEST VERSION
7/21/2023

SHEET 1 OF 1