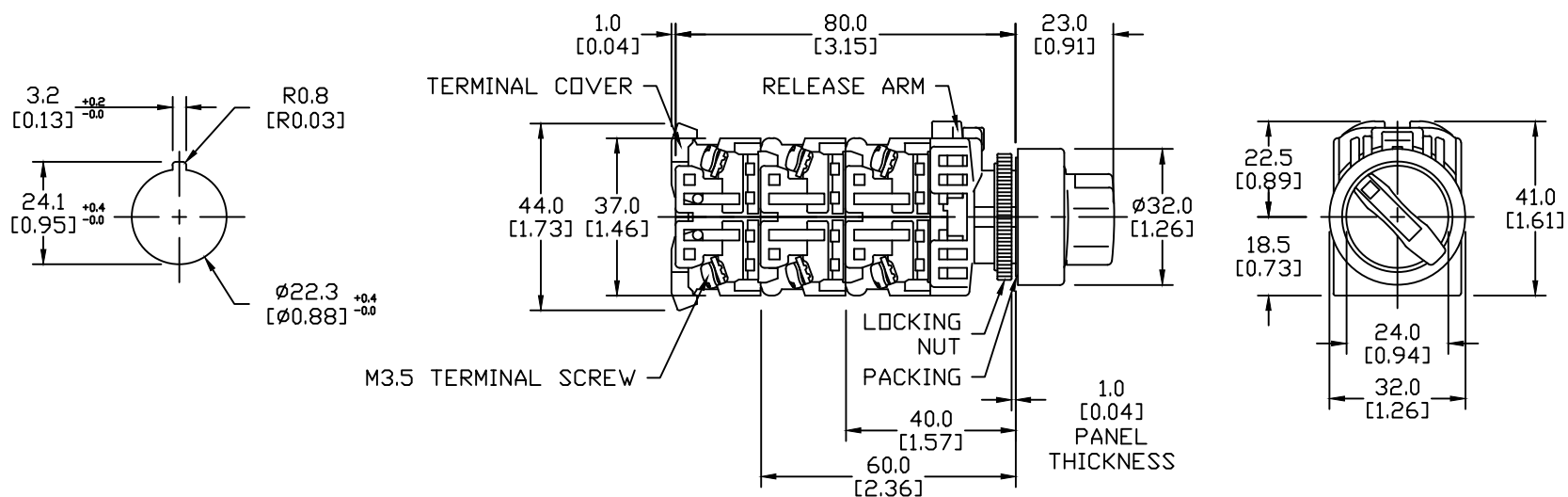


NOTE: IF KEY-WASHER OR LEGEND PLATE  
ARE NOT USED, 3.2MM-WIDE LOCATION  
HOLES NEED NOT BE CUTOUT.



# NOTES:

1. DIMENSIONS CAN BE CHANGED BY MANUFACTURER WITHOUT NOTICE.
2. DIMENSIONS DO NOT IMPLY TOLERANCE.

AR22PR-122BZA

Units: mm [inch]

Full Scale

SEL 22mm, METAL, BLACK KNOB, 2  
NORMALLY OPEN / 2 NORMALLY CLOSED,  
SPRING RTC, 3-POS

**AUTOMATIONDIRECT**.com