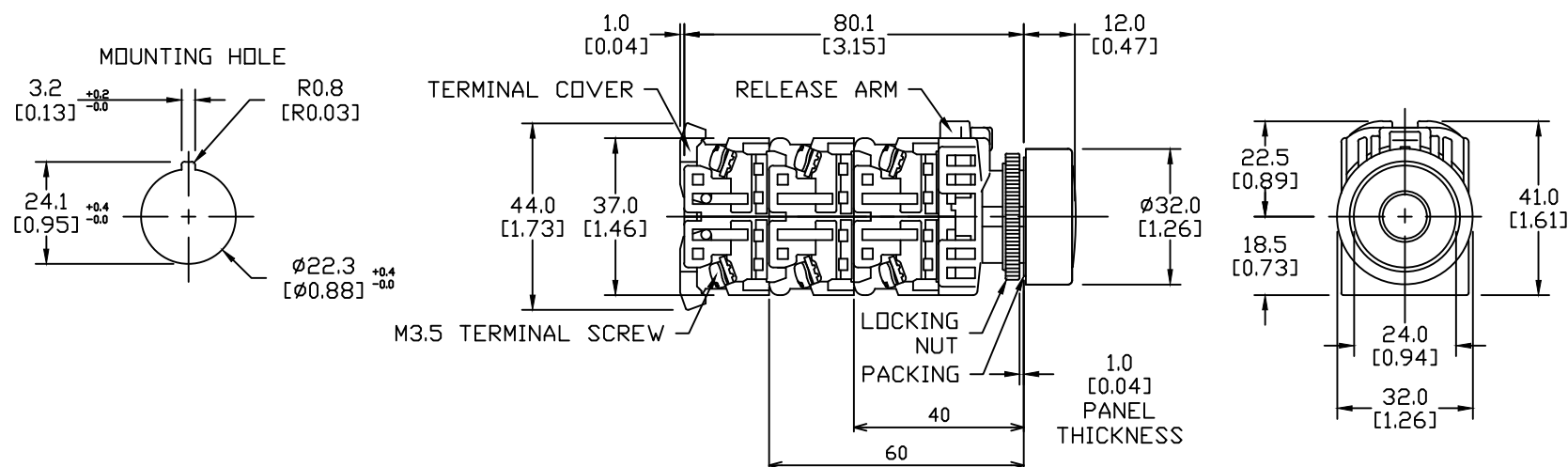


NOTE: IF KEY-WASHER OR LEGEND PLATE
ARE NOT USED, 3.2MM-WIDE LOCATION
HOLES NEED NOT BE CUTOUT.



NOTES:

1. DIMENSIONS CAN BE CHANGED BY MANUFACTURER WITHOUT NOTICE.
2. DIMENSIONS DO NOT IMPLY TOLERANCE.

AR22FAR-10C03ZA

Units: mm [inch]

Full Scale

PB 22mm, METAL, GREEN, NORMALLY
CLOSED, MOMENTARY FLUSH, 30mm
HEAD W/ON IMPRINT

AUTOMATIONDIRECT.com