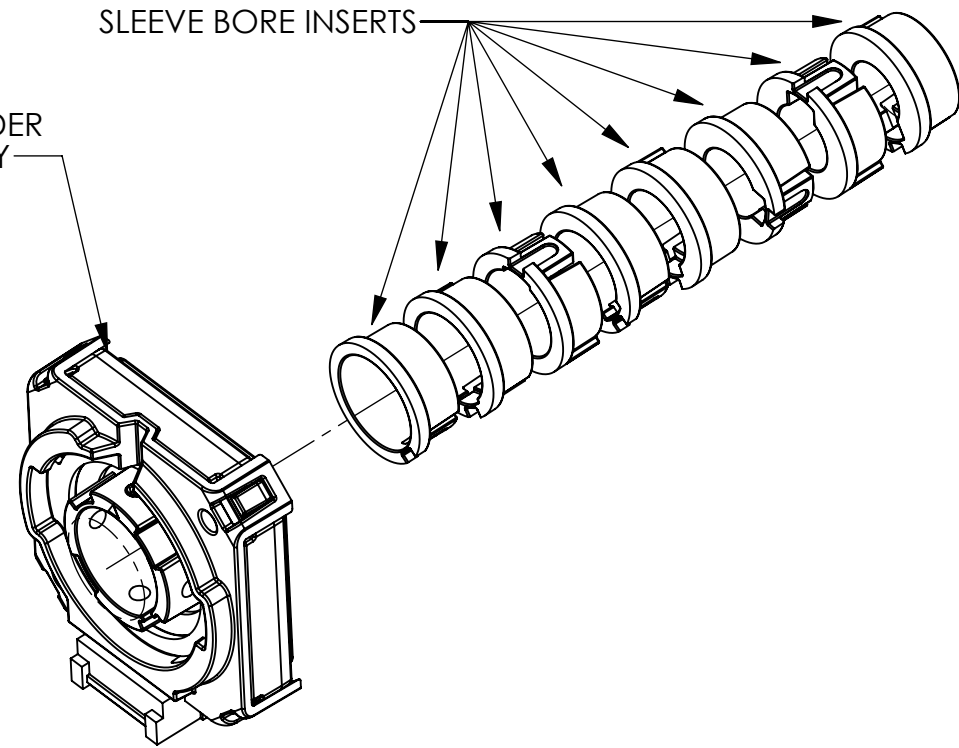
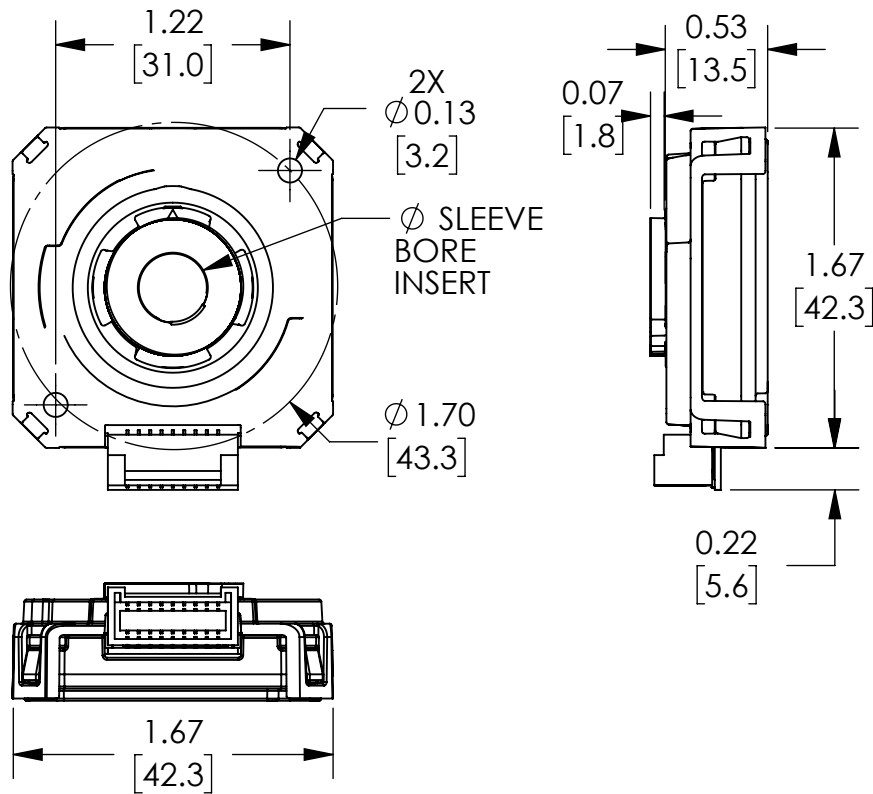


NOTE:
 SELECT AND INSTALL DESIRED SLEEVE BORE INSERT
 9mm, 3/8in, 10mm, 11mm, 12mm, 1/2in, 13mm, 14mm
 SHAFT ADAPTER IS NOT NEEDED FOR 5/8in SHAFT



NOTES:

1. DIMENSIONS CAN BE CHANGED BY MANUFACTURER WITHOUT NOTICE.
2. DIMENSIONS DO NOT IMPLY TOLERANCE.

AMT332S-V

Units: inches [mm]

Scale: Full

SAME SKY INCREMENTAL MODULAR ENCODER, 5 VDC, RADIAL, TOTEM OUTPUT, FOR USE WITH NEMA 34 DUAL SHAFT MOTORS

AUTOMATIONDIRECT.com