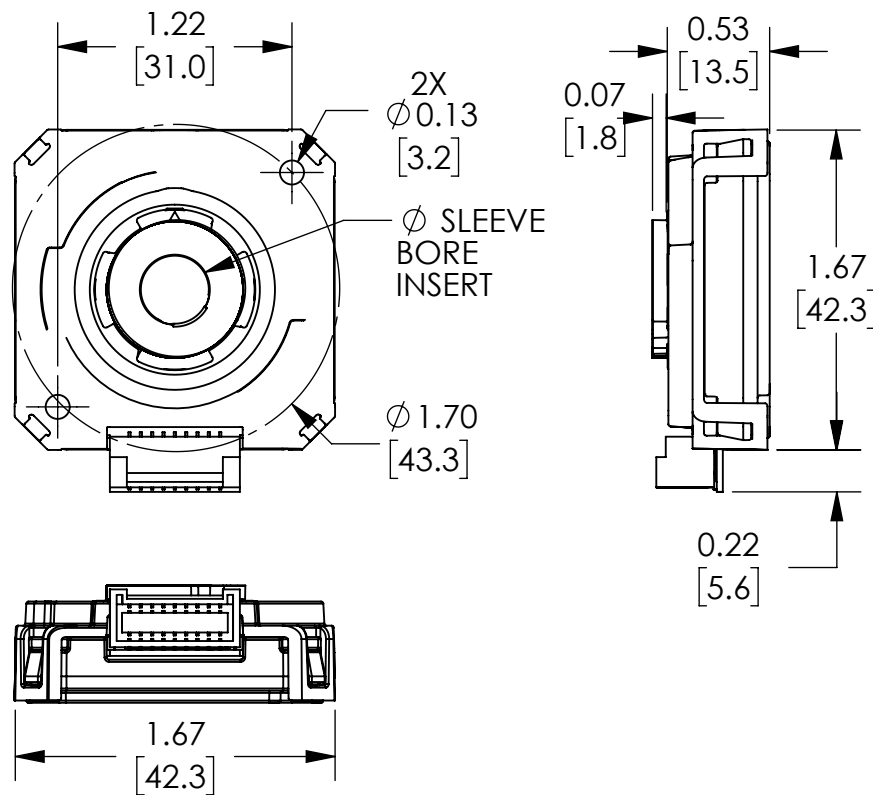
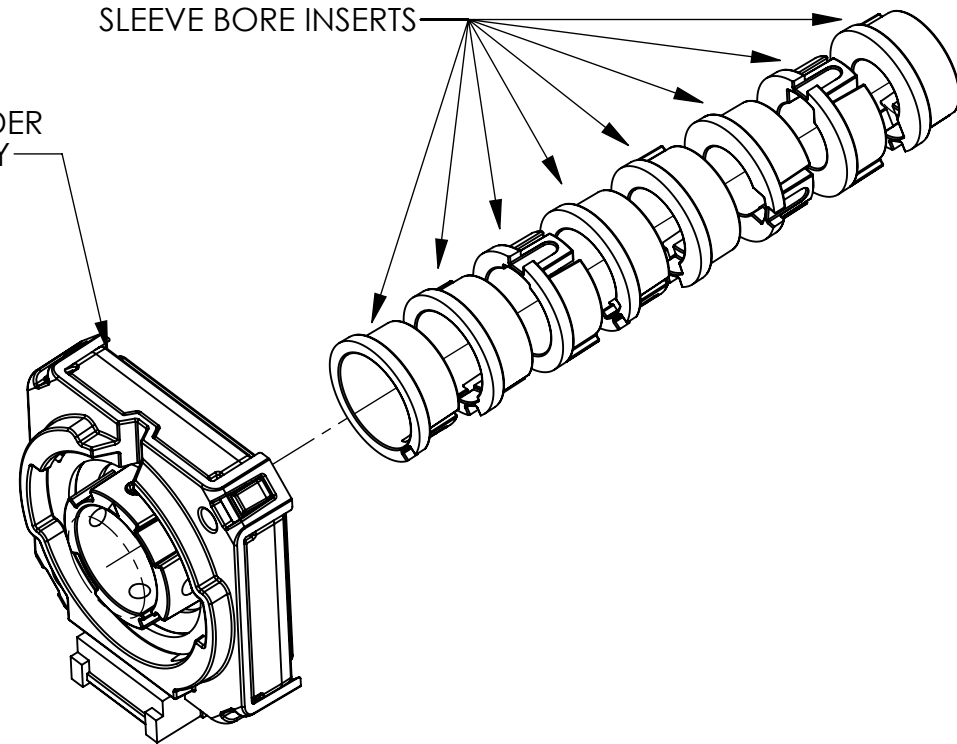


NOTE:  
 SELECT AND INSTALL DESIRED SLEEVE BORE INSERT  
 9mm, 3/8in, 10mm, 11mm, 12mm, 1/2in, 13mm, 14mm  
 SHAFT ADAPTER IS NOT NEEDED FOR 5/8in SHAFT



ENCODER  
BODY



## NOTES:

1. DIMENSIONS CAN BE CHANGED BY MANUFACTURER WITHOUT NOTICE.
2. DIMENSIONS DO NOT IMPLY TOLERANCE.

AMT132Q-V

Units: inches [mm]

Scale: Full

SAME SKY INCREMENTAL MODULAR  
 ENCODER, 5 VDC, RADIAL, LINE  
 DRIVER OUT, FOR USE WITH NEMA  
 34 DUAL SHAFT MOTORS

**AUTOMATIONDIRECT**.com