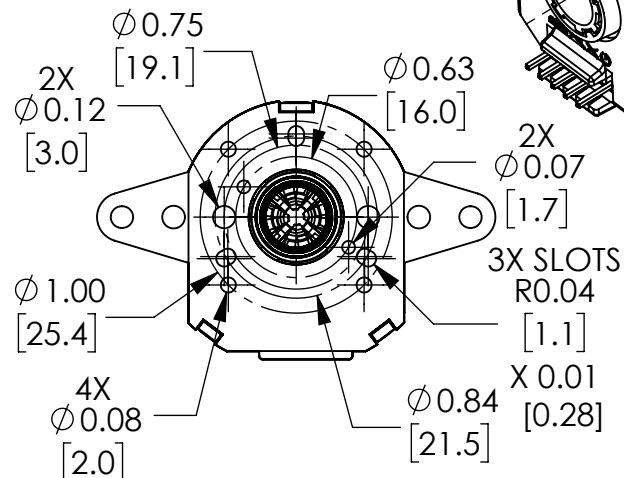
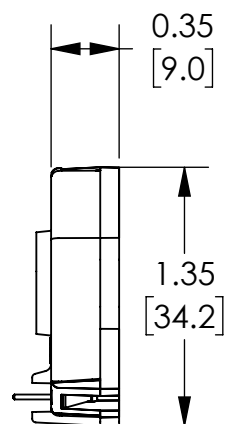
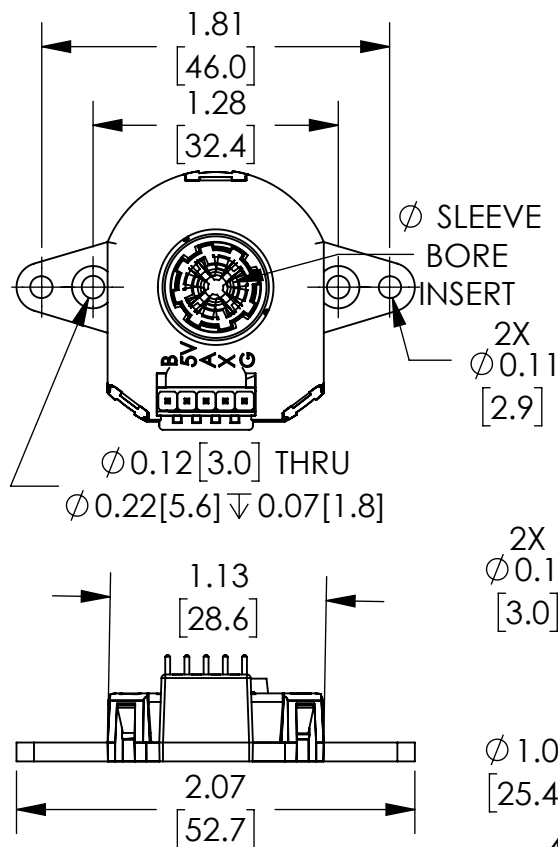


NOTE:  
 SELECT AND INSTALL DESIRED ENODER BASE  
 SELECT AND INSTALL DESIRED SLEEVE BORE INSERT  
 2mm, 3mm, 3/8in, 4mm, 3/16in, 5mm, 6mm, 1/4in, 8mm



BACK VIEW

STANDARD BASE

ENCODER BODY

SLEEVE BORE INSERTS

WIDE BASE

## NOTES:

1. DIMENSIONS CAN BE CHANGED BY MANUFACTURER WITHOUT NOTICE.
2. DIMENSIONS DO NOT IMPLY TOLERANCE.

AMT103-V

Units: inches [mm]

Scale: Full

SAME SKY INCREMENTAL  
 ENCODER, 5 VDC, AXIAL, TOTEM  
 OUTPUT, FOR USE WITH NEMA 14,  
 17, 23 DUAL SHAFT MOTORS

**AUTOMATIONDIRECT**.com