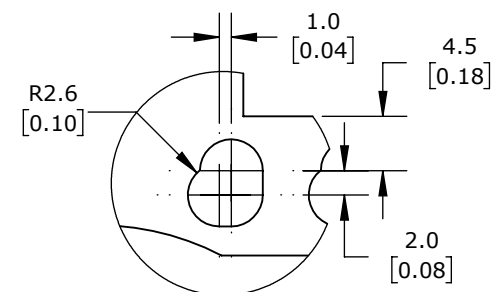


ISOMETRIC VIEW



DETAIL A
SCALE 2 : 1.25
(4X)

ACHIEVE IEC LIMIT SWITCH, PULL ACTION WITH RING, 90-DEGREE ADJUSTABLE HEAD, (1) N.O./ (1) N.C. CONTACT(S), SNAP ACTION, 20-22MM OR 40-42MM HOLE SPACING, ZINC ALLOY, (3) 1/2IN NPT ENTRIES.

ADM2T9805Z11A

AutomationDirect.com
1-800-633-0405



3rd
ANGLE

NOT TO
SCALE

PART DIMENSIONS MAY DIFFER SLIGHTLY
DUE TO MANUFACTURER'S VARIANCES

METRIC UNITS USED
FOR PART DESIGN

UNLESS OTHERWISE
SPECIFIED UNITS ARE:

mm
[inch]

LATEST VERSION
5/12/2023

SHEET 1 OF 1