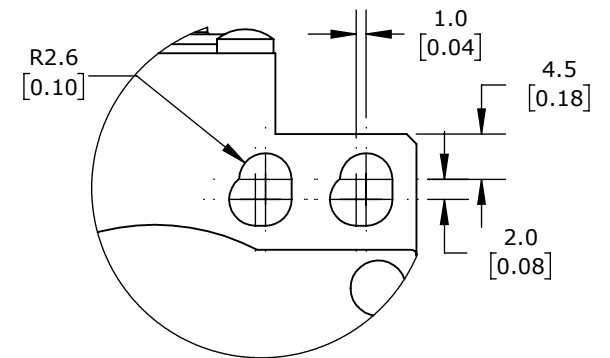


ISOMETRIC VIEW



DETAIL A  
SCALE 2 : 1.5

ACHIEVE IEC LIMIT SWITCH, 360 DEGREE STAINLESS STEEL SPRING, 90-DEGREE ADJUSTABLE HEAD, (1) N.O./ (1) N.C. CONTACT(S), SNAP ACTION, 20-22MM OR 40-42MM HOLE SPACING, ZINC ALLOY, (3) 1/2IN NPT ENTRIES.

**ADM2T93Z11**

AutomationDirect.com  
1-800-633-0405



3rd  
ANGLE

NOT TO  
SCALE

PART DIMENSIONS MAY DIFFER SLIGHTLY  
DUE TO MANUFACTURER'S VARIANCES

METRIC UNITS USED  
FOR PART DESIGN

UNLESS OTHERWISE  
SPECIFIED UNITS ARE:

**mm**  
[inch]

LATEST VERSION  
5/12/2023

SHEET 1 OF 1