

400mm STROKE, 1100 LBS/500 KG. FOR USE WITH 40 X 40mm
AND 1.5 X 1.5IN PROFILE T-SLOTTED RAILS.

ADC PART NUMBER	DESCRIPTION	QTY
907.02004-PP000001	Spindle Lifting Column SQ.3 1340, 400mm Stroke	4
124.43800-PP000001	Control Box V3800, SQ.3 4340	1
113.00006-PP000004	Leveling Foot, M10 x 25mm	4
124.00281-PP000001	Hand Switch SCT memory, T6	1
124.00145-PP000001	Power Cord, US, 3m	1
NA	M3.5 x 20mm Phillips round head screw	5
NA	M5.5 x 25mm Phillips round head screw	6

ERGOSWISS SQ SERIES TABLE LIFTING SYSTEM KIT

907.42237-PP000001

AutomationDirect.com
1-800-633-0405



3rd
ANGLE

NOT TO
SCALE

PART DIMENSIONS MAY DIFFER SLIGHTLY
DUE TO MANUFACTURER'S VARIANCES

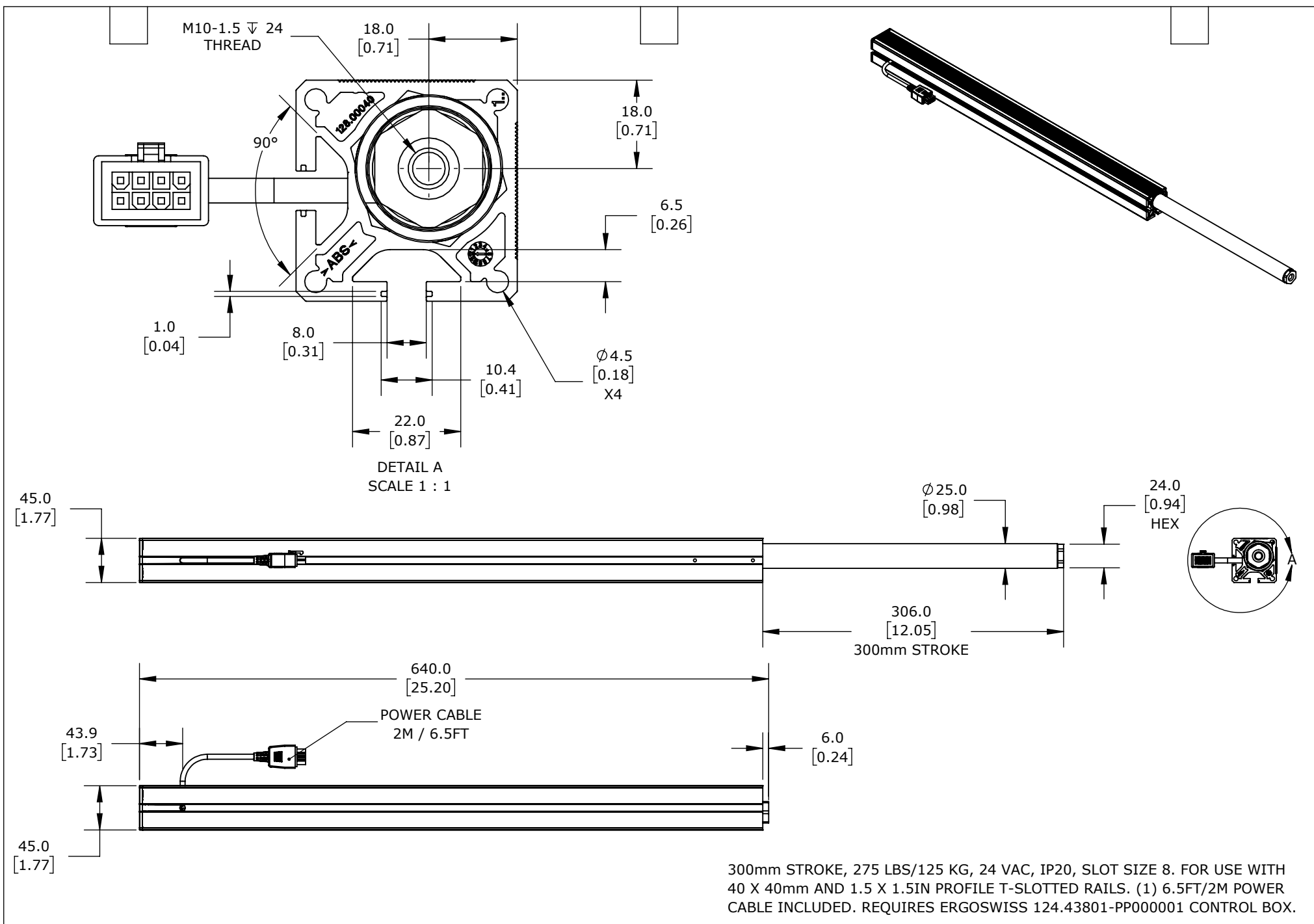
METRIC UNITS USED
FOR PART DESIGN

UNLESS OTHERWISE
SPECIFIED UNITS ARE:

mm
[inch]

LATEST VERSION
6/26/2024

SHEET 1 OF 5



ERGOSWISS SQ SERIES SPINDLE LIFTING COLUMN

907.02003-PP000001

AutomationDirect.com
1-800-633-0405



3rd
ANGLE

NOT TO
SCALE

PART DIMENSIONS MAY DIFFER SLIGHTLY
DUE TO MANUFACTURER'S VARIANCES

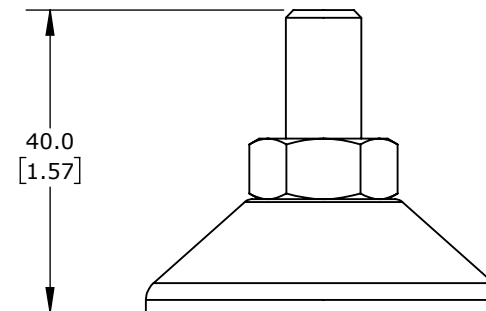
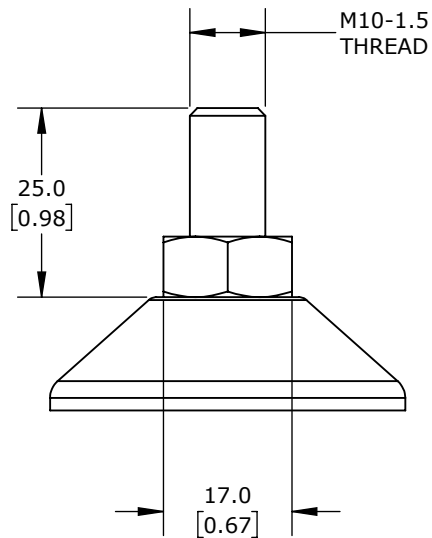
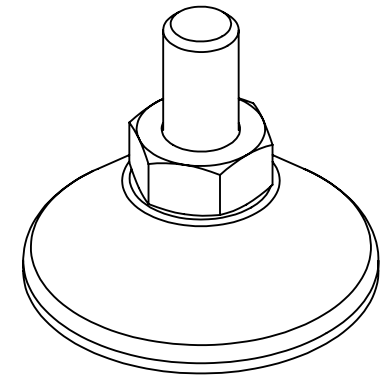
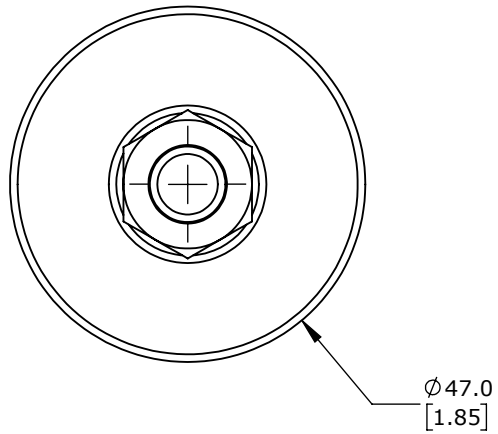
METRIC UNITS USED
FOR PART DESIGN

UNLESS OTHERWISE
SPECIFIED UNITS ARE:

mm
[inch]

LATEST VERSION
6/26/2024

SHEET 2 OF 5



PACKAGE OF 4. FOR USE WITH ERGOSWISS 907.02003-PP000001
AND 907.02004-PP000001 SPINDLE LIFTING COLUMNS.

ERGOSWISS SQ SERIES LEVELING FOOT

113.00006-PP000004

AutomationDirect.com
1-800-633-0405

3rd
ANGLE

NOT TO
SCALE

PART DIMENSIONS MAY DIFFER SLIGHTLY
DUE TO MANUFACTURER'S VARIANCES

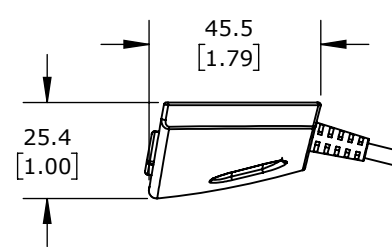
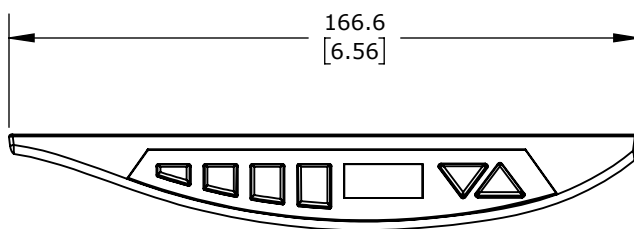
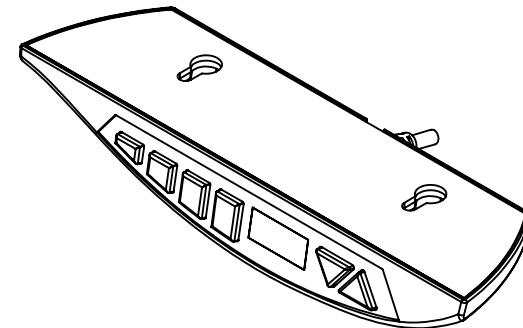
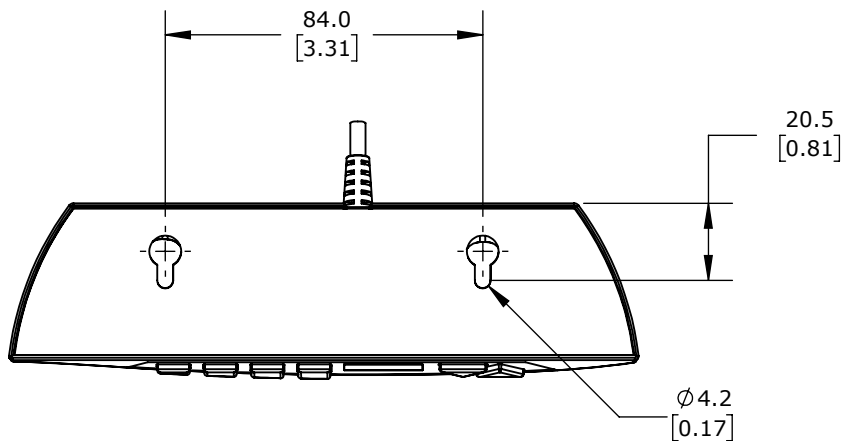
METRIC UNITS USED
FOR PART DESIGN

UNLESS OTHERWISE
SPECIFIED UNITS ARE:

mm
[inch]

LATEST VERSION
6/26/2024

SHEET 3 OF 5



MANUAL SWITCH, IP30. FOR USE WITH ERGOSWISS 124.43800-PP000001 AND 124.43801-PP000001 CONTROL BOXES. (1) 6.5FT/2.0M POWER CABLE INCLUDED. SAVES (3) INTERMEDIATE POSITIONS IN ADDITION TO UP AND DOWN FUNCTION.

ERGOSWISS SQ SERIES SCT MEMORY MODULE

124.00281-PP000001

AutomationDirect.com
1-800-633-0405



3rd
ANGLE

NOT TO
SCALE

PART DIMENSIONS MAY DIFFER SLIGHTLY
DUE TO MANUFACTURER'S VARIANCES

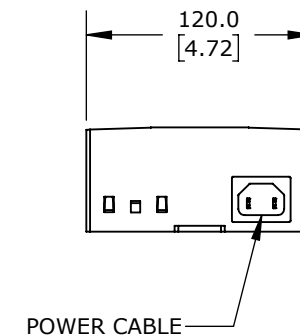
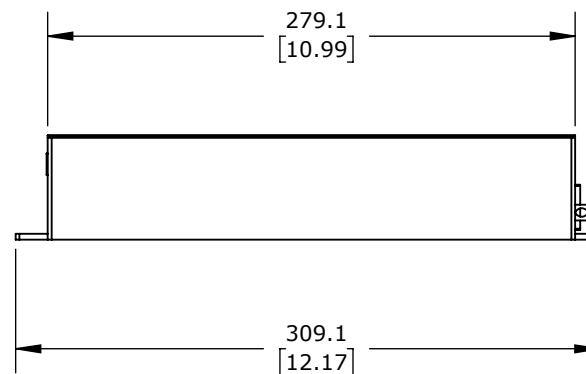
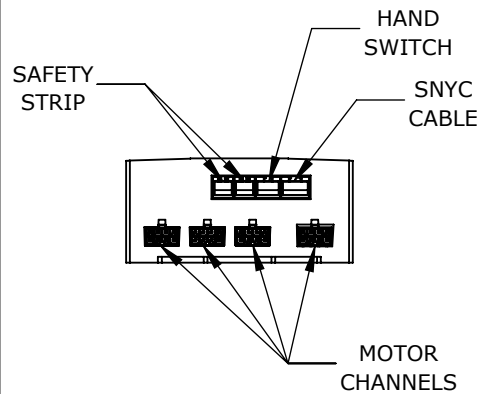
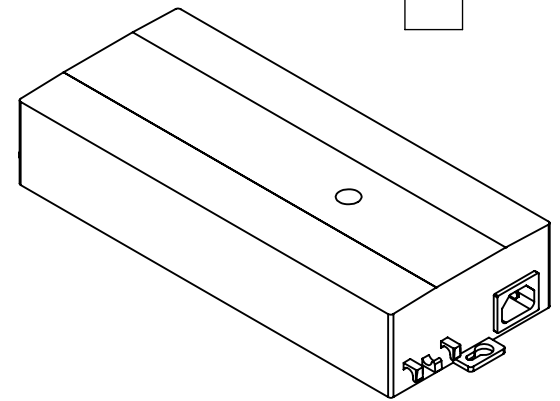
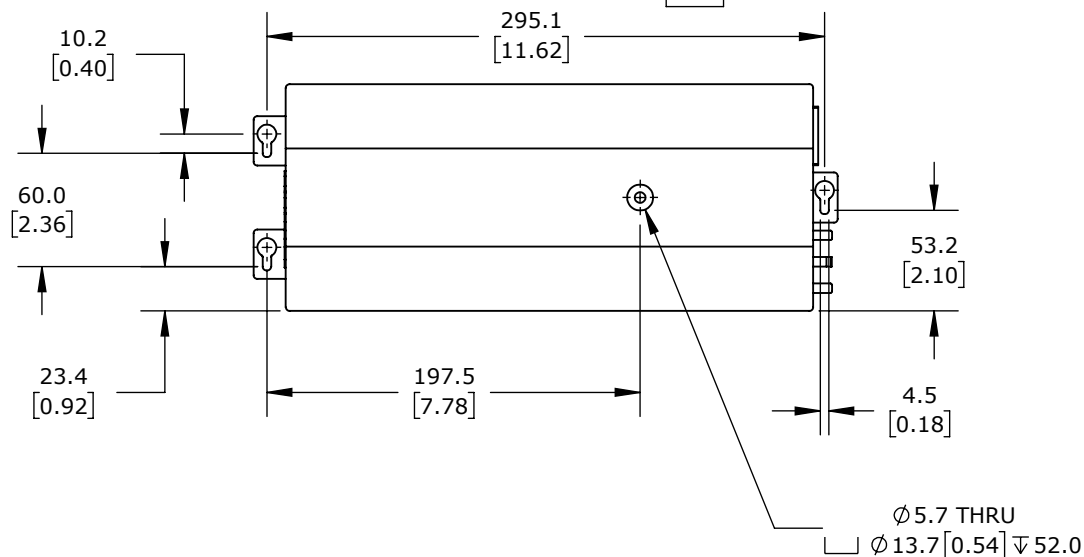
METRIC UNITS USED
FOR PART DESIGN

UNLESS OTHERWISE
SPECIFIED UNITS ARE:

mm
[inch]

LATEST VERSION
6/26/2024

SHEET 4 OF 5



110 VAC NOMINAL INPUT, 24 VAC, IP20. FOR USE WITH UP TO (4) ERGOSWISS 907.02003-PP000001 SPINDLE LIFTING COLUMNS.

ERGOSWISS SQ SERIES CONTROL BOX

124.43801-PP000001

AutomationDirect.com
1-800-633-0405

3rd
ANGLE

NOT TO
SCALE

PART DIMENSIONS MAY DIFFER SLIGHTLY
DUE TO MANUFACTURER'S VARIANCES

METRIC UNITS USED
FOR PART DESIGN

UNLESS OTHERWISE
SPECIFIED UNITS ARE:

mm
[inch]

LATEST VERSION
6/26/2024

SHEET 5 OF 5