

300mm STROKE, 1100 LBS/500 KG. FOR USE WITH 40 X 40mm  
AND 1.5 X 1.5IN PROFILE T-SLOTTED RAILS.

ADC PART NUMBER	DESCRIPTION	QTY
907.02003-PP000001	Spindle Lifting Column SQ.3 1330, 300mm Stroke	4
124.43801-PP000001	Control Box V3801, SQ.3 4330	1
113.00006-PP000004	Leveling Foot, M10 x 25mm	4
124.00281-PP000001	Hand Switch SCT memory, T6	1
124.00145-PP000001	Power Cord, US, 3m	1
NA	M3.5 x 20mm Phillips round head screw	5
NA	M5.5 x 25mm Phillips round head screw	6

## ERGOSWISS SQ SERIES TABLE LIFTING SYSTEM KIT

907.42236-PP000001

AutomationDirect.com  
1-800-633-0405



3rd  
ANGLE

NOT TO  
SCALE

PART DIMENSIONS MAY DIFFER SLIGHTLY  
DUE TO MANUFACTURER'S VARIANCES

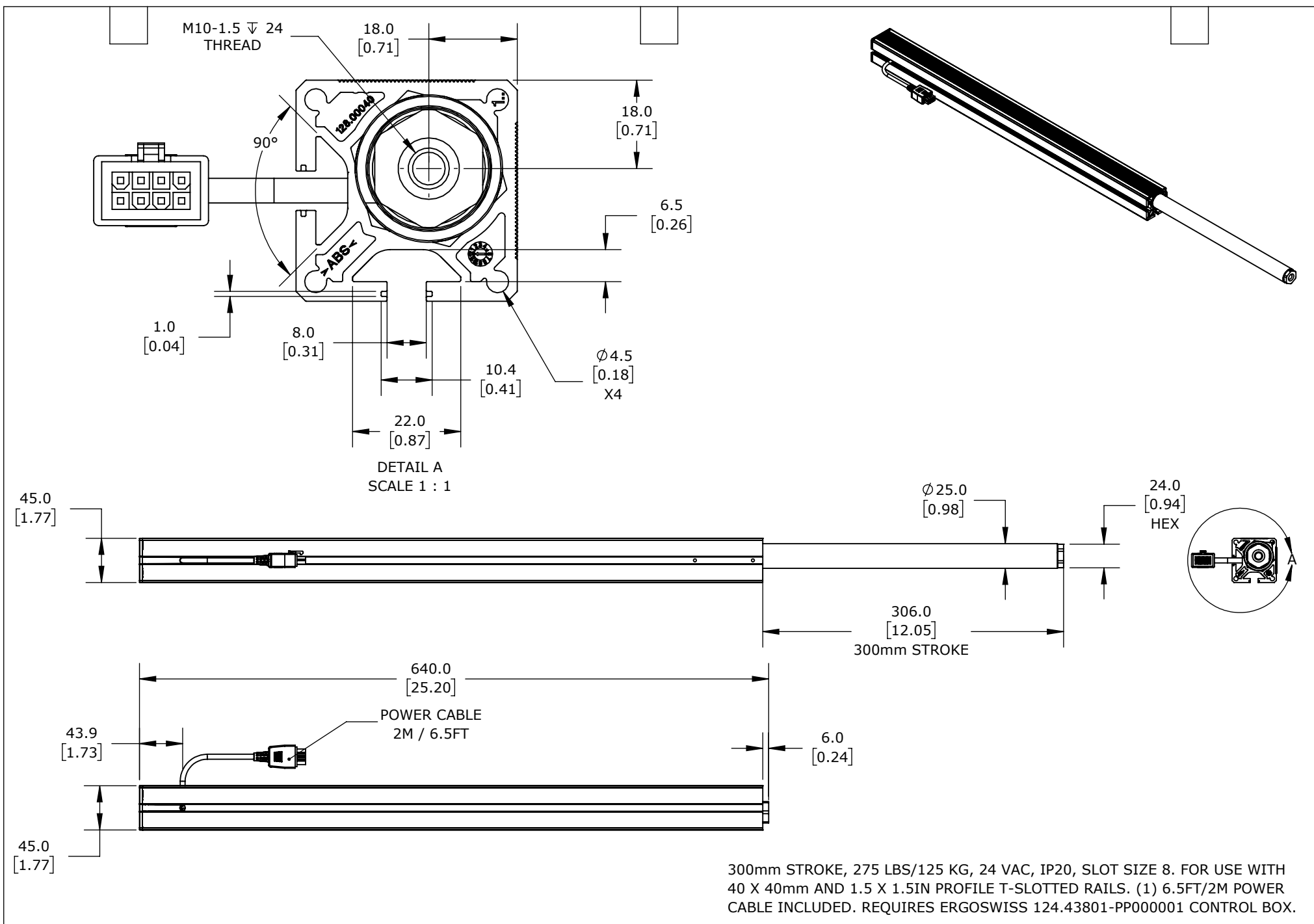
METRIC UNITS USED  
FOR PART DESIGN

UNLESS OTHERWISE  
SPECIFIED UNITS ARE:

**mm**  
[inch]

LATEST VERSION  
6/26/2024

SHEET 1 OF 5



# ERGOSWISS SQ SERIES SPINDLE LIFTING COLUMN

907.02003-PP000001

AutomationDirect.com  
1-800-633-0405



3rd  
ANGLE

NOT TO  
SCALE

PART DIMENSIONS MAY DIFFER SLIGHTLY  
DUE TO MANUFACTURER'S VARIANCES

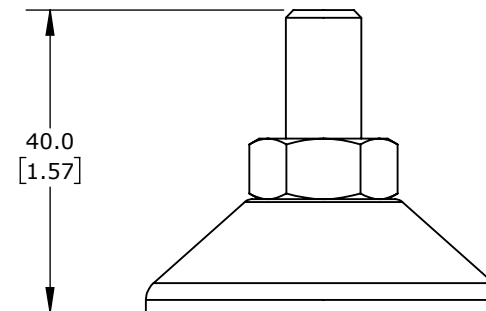
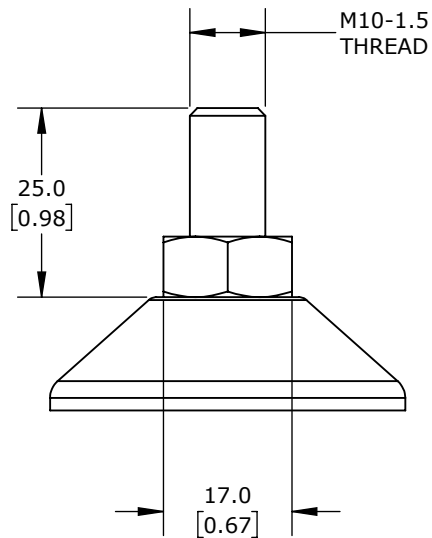
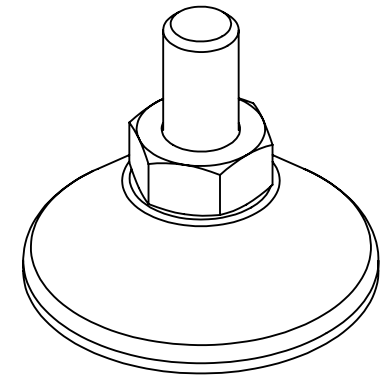
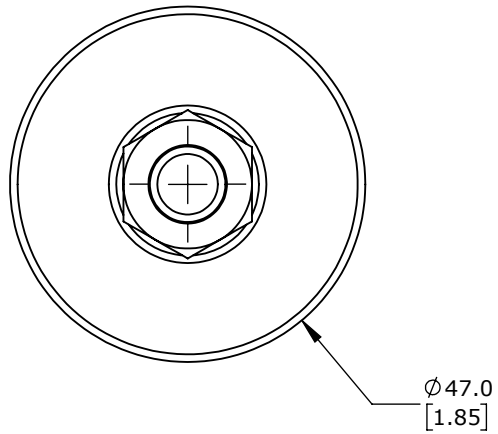
METRIC UNITS USED  
FOR PART DESIGN

UNLESS OTHERWISE  
SPECIFIED UNITS ARE:

mm  
[inch]

LATEST VERSION  
6/26/2024

SHEET 2 OF 5



PACKAGE OF 4. FOR USE WITH ERGOSWISS 907.02003-PP000001  
AND 907.02004-PP000001 SPINDLE LIFTING COLUMNS.

**ERGOSWISS SQ SERIES LEVELING FOOT**

**113.00006-PP000004**

AutomationDirect.com  
1-800-633-0405

3rd  
ANGLE

NOT TO  
SCALE

PART DIMENSIONS MAY DIFFER SLIGHTLY  
DUE TO MANUFACTURER'S VARIANCES

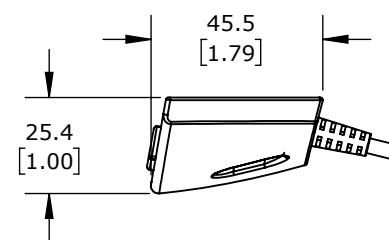
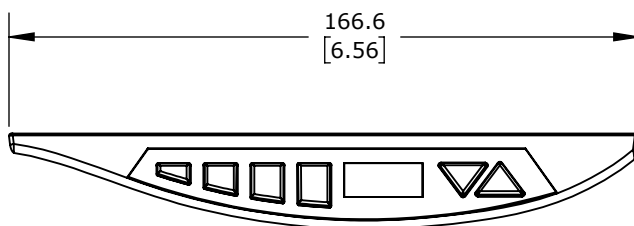
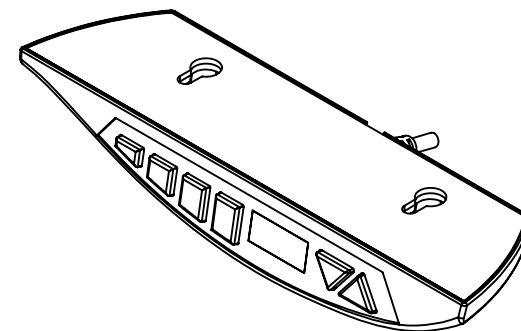
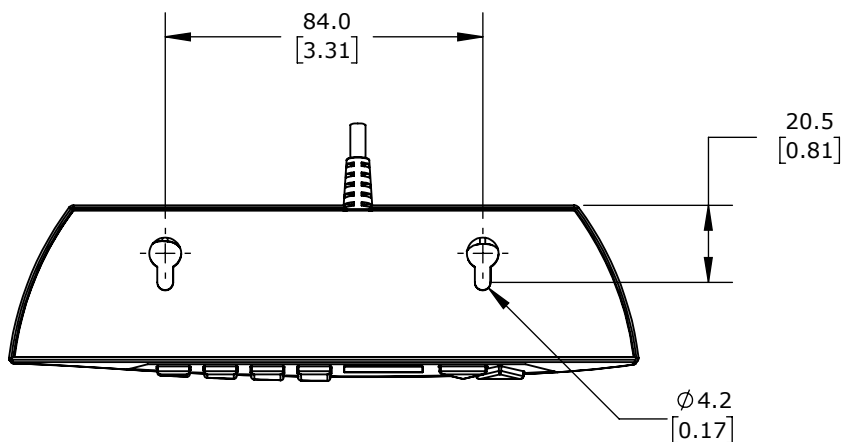
METRIC UNITS USED  
FOR PART DESIGN

UNLESS OTHERWISE  
SPECIFIED UNITS ARE:

**mm**  
[inch]

LATEST VERSION  
6/26/2024

SHEET 3 OF 5



MANUAL SWITCH, IP30. FOR USE WITH ERGOSWISS 124.43800-PP000001 AND 124.43801-PP000001 CONTROL BOXES. (1) 6.5FT/2.0M POWER CABLE INCLUDED. SAVES (3) INTERMEDIATE POSITIONS IN ADDITION TO UP AND DOWN FUNCTION.

## ERGOSWISS SQ SERIES SCT MEMORY MODULE

124.00281-PP000001

AutomationDirect.com  
1-800-633-0405



3rd  
ANGLE

NOT TO  
SCALE

PART DIMENSIONS MAY DIFFER SLIGHTLY  
DUE TO MANUFACTURER'S VARIANCES

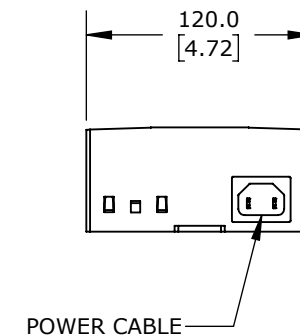
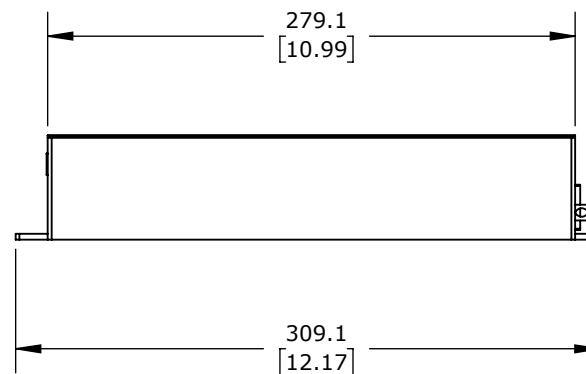
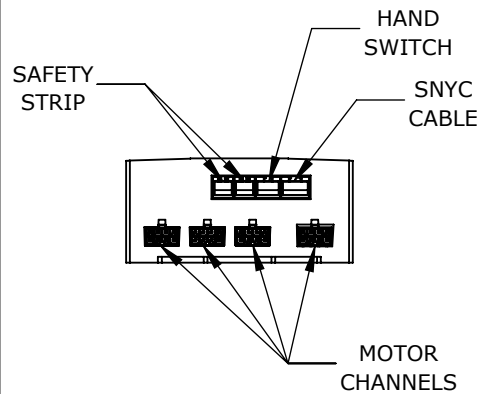
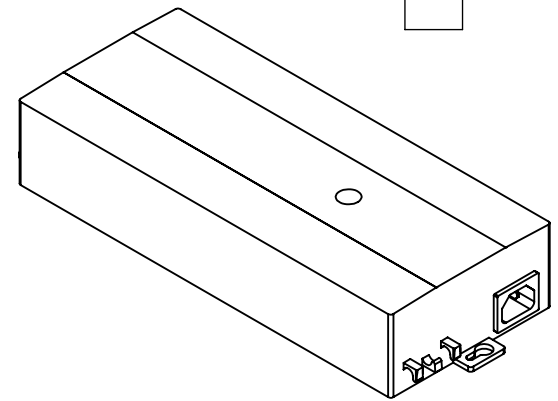
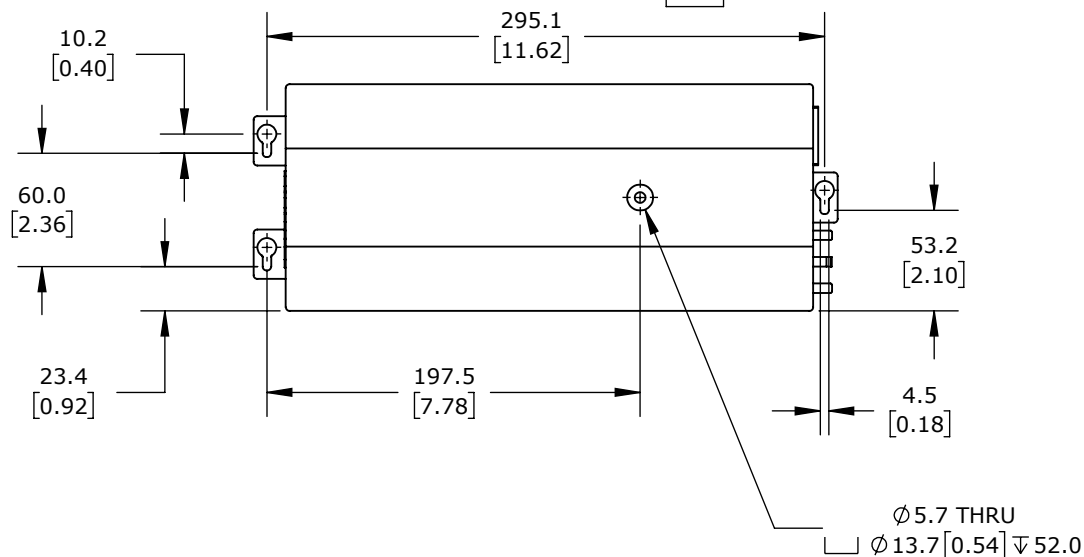
METRIC UNITS USED  
FOR PART DESIGN

UNLESS OTHERWISE  
SPECIFIED UNITS ARE:

mm  
[inch]

LATEST VERSION  
6/26/2024

SHEET 4 OF 5



110 VAC NOMINAL INPUT, 24 VAC, IP20. FOR USE WITH UP TO (4) ERGOSWISS 907.02003-PP000001 SPINDLE LIFTING COLUMNS.

## ERGOSWISS SQ SERIES CONTROL BOX

124.43801-PP000001

AutomationDirect.com  
1-800-633-0405

3rd  
ANGLE

NOT TO  
SCALE

PART DIMENSIONS MAY DIFFER SLIGHTLY  
DUE TO MANUFACTURER'S VARIANCES

METRIC UNITS USED  
FOR PART DESIGN

UNLESS OTHERWISE  
SPECIFIED UNITS ARE:

mm  
[inch]

LATEST VERSION  
6/26/2024

SHEET 5 OF 5