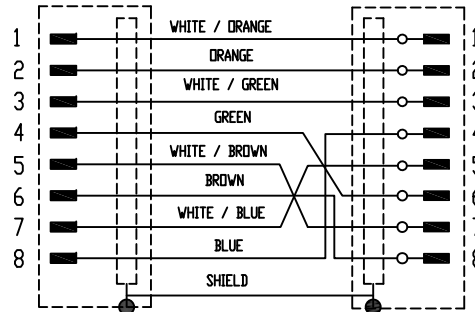
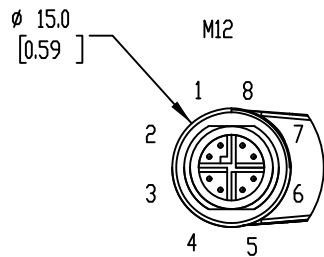
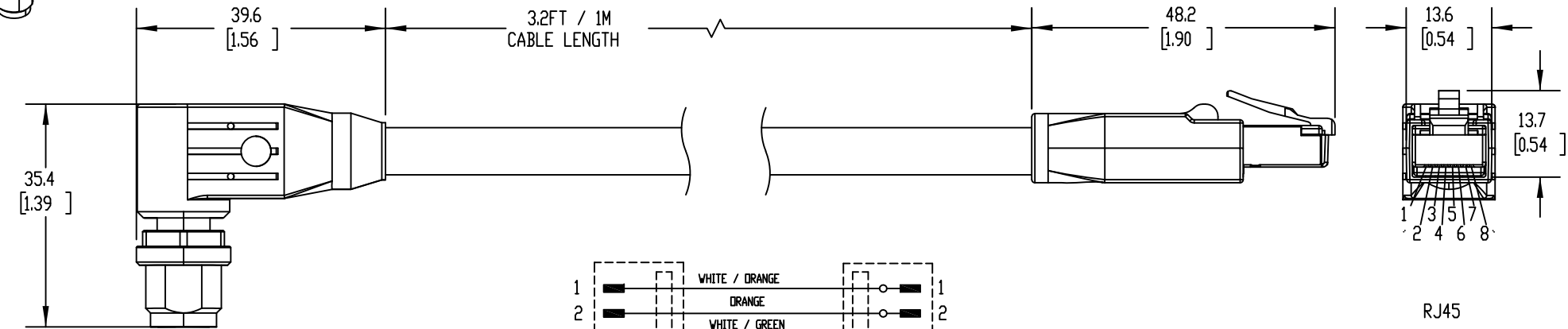


ISOMETRIC VIEWS



SCHEMATIC DIAGRAM

RJ45

MURRELEKTRONIK CAT6A ETHERNET STRAIGHT-THROUGH PATCH CABLE, OVERALL SHIELDED WITH FOIL/UNSHIELDED TWISTED PAIR, M12 RIGHT-ANGLE MALE X-CODED TO RJ45 MALE, 3.2FT/1M CABLE LENGTH, TEAL. FOR USE WITH 1/10 GBPS NETWORKS.

7700-51201-S4X0100

AutomationDirect.com
1-800-633-0405

	3rd ANGLE	NOT TO SCALE	PART DIMENSIONS MAY DIFFER SLIGHTLY DUE TO MANUFACTURER'S VARIANCES	METRIC UNITS USED FOR PART DESIGN	UNLESS OTHERWISE SPECIFIED UNITS ARE:	mm [inch]	LATEST VERSION 10/5/2022	SHEET 1 OF 1
--	--------------	-----------------	--	--------------------------------------	--	--------------	-----------------------------	--------------