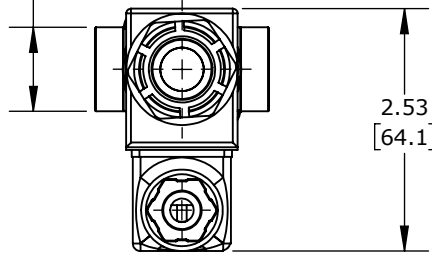
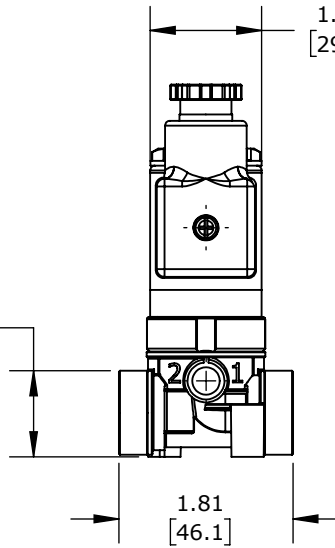


Ø0.88
[22.2]

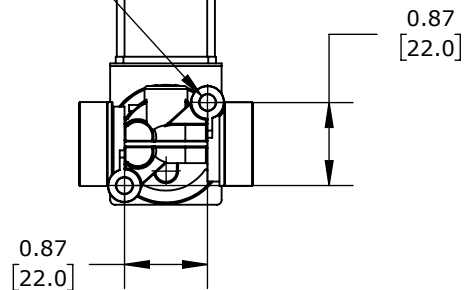


1.16
[29.5]

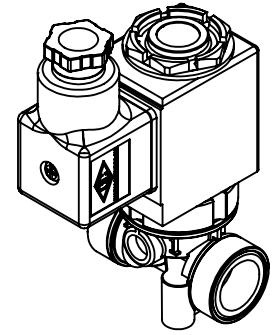
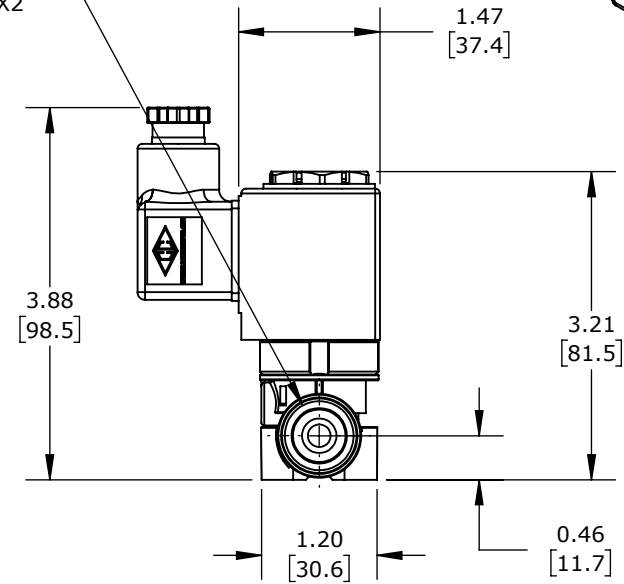
0.90
[22.8]



#8-32
THREAD
X2



3/8" NPT
PORT X2



2-WAY, 2-POSITION, N.C., GLASS-FILLED NYLON BODY, 3/8IN FEMALE NPT INLET(s), 3/8IN FEMALE NPT OUTLET(s), CV=0.72, 40 PSI MAXIMUM OPERATING PRESSURE, 120 VAC OPERATING VOLTAGE, 18mm DIN STYLE WIRING PLUG.

SPARTAN SOLENOID VALVE

6200-680-AAC7C-A

AutomationDirect.com
1-800-633-0405



3rd
ANGLE

NOT TO
SCALE

PART DIMENSIONS MAY DIFFER SLIGHTLY
DUE TO MANUFACTURER'S VARIANCES

INCH UNITS USED FOR
PART DESIGN

UNLESS OTHERWISE
SPECIFIED UNITS ARE:

inch
[mm]

LATEST VERSION
1/26/2023

SHEET 1 OF 1