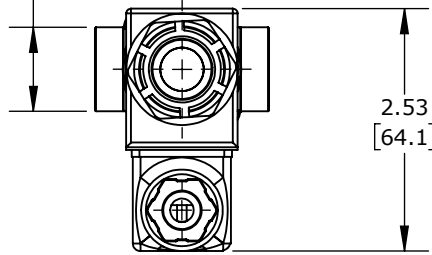
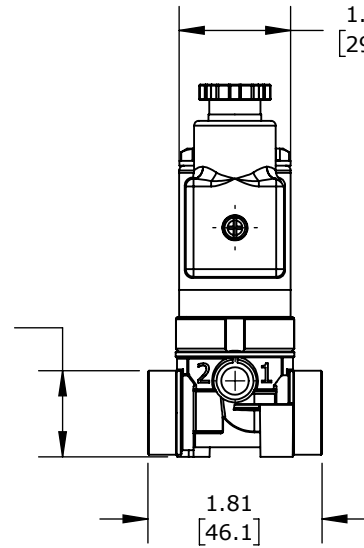


Ø0.88  
[22.2]

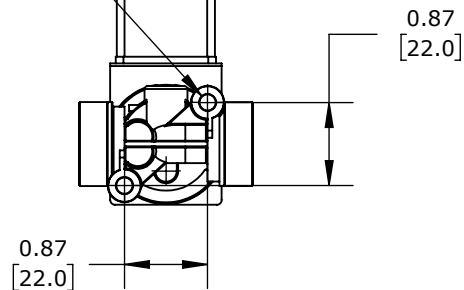


1.16  
[29.5]

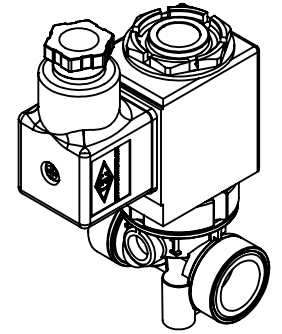
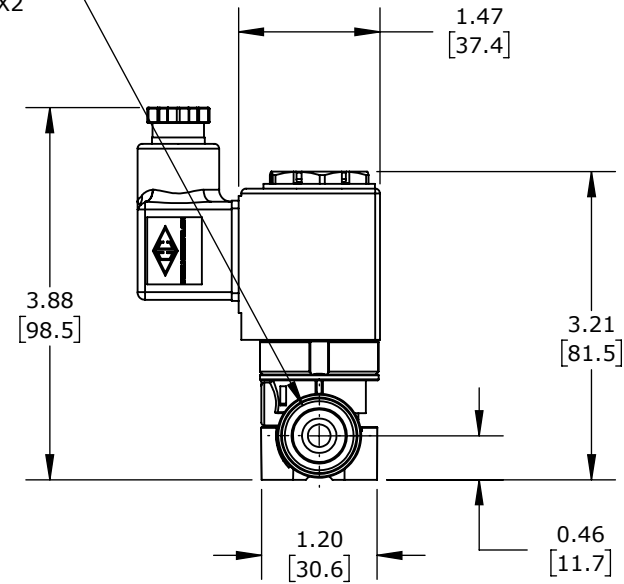
0.90  
[22.8]



#8-32  
THREAD  
X2



3/8" NPT  
PORT X2



2-WAY, 2-POSITION, N.C., GLASS-FILLED NYLON BODY, 3/8IN FEMALE NPT INLET(s), 3/8IN FEMALE NPT OUTLET(s), CV=0.72, 30 PSI MAXIMUM OPERATING PRESSURE, 24 VDC OPERATING VOLTAGE, 18mm DIN STYLE WIRING PLUG.

## SPARTAN SOLENOID VALVE

6200-680-AAC3C-A

AutomationDirect.com  
1-800-633-0405



3rd  
ANGLE

NOT TO  
SCALE

PART DIMENSIONS MAY DIFFER SLIGHTLY  
DUE TO MANUFACTURER'S VARIANCES

INCH UNITS USED FOR  
PART DESIGN

UNLESS OTHERWISE  
SPECIFIED UNITS ARE:

inch  
[mm]

LATEST VERSION  
1/26/2023

SHEET 1 OF 1