

3-5.5MM  
OPENING  
X6

3.5-6.5MM  
OPENING  
X6

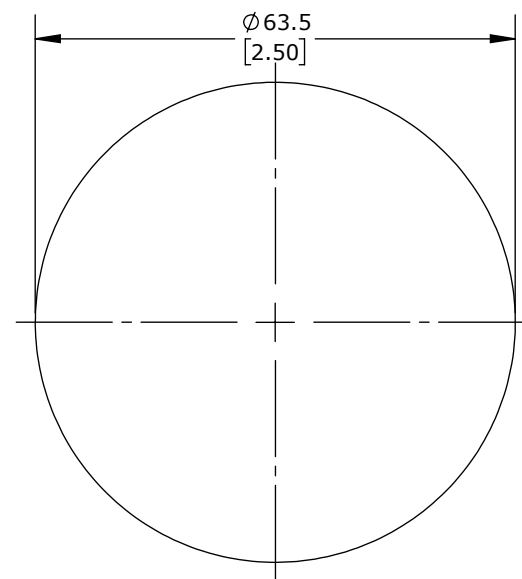
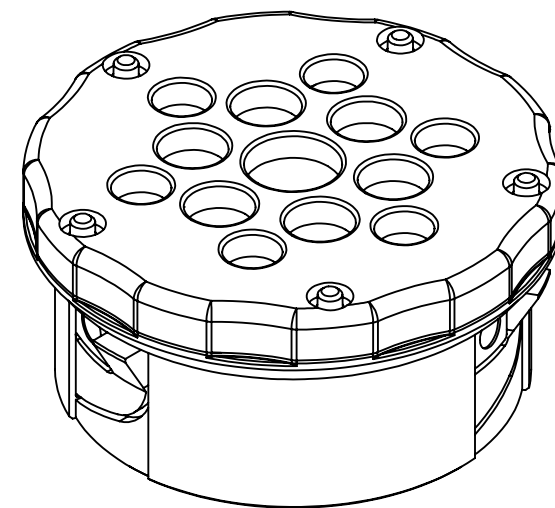
Ø71.4  
[2.81]

6-10MM  
OPENING

9.4  
[0.37]

25.6  
[1.01]

M63-1.5  
THREAD



PANEL CUTOUT  
DETAIL

# MURRPLASTIK KDP/R SERIES GENERAL PURPOSE FRAME

565211

AutomationDirect.com  
1-800-633-0405



3rd  
ANGLE

NOT TO  
SCALE

PART DIMENSIONS MAY DIFFER SLIGHTLY  
DUE TO MANUFACTURER'S VARIANCES

METRIC UNITS USED  
FOR PART DESIGN

UNLESS OTHERWISE  
SPECIFIED UNITS ARE:

**mm**  
[inch]

LATEST VERSION  
3/30/2022

SHEET 1 OF 1