

3.-6.5MM
OPENING
X2

Ø 71.4
[2.81]

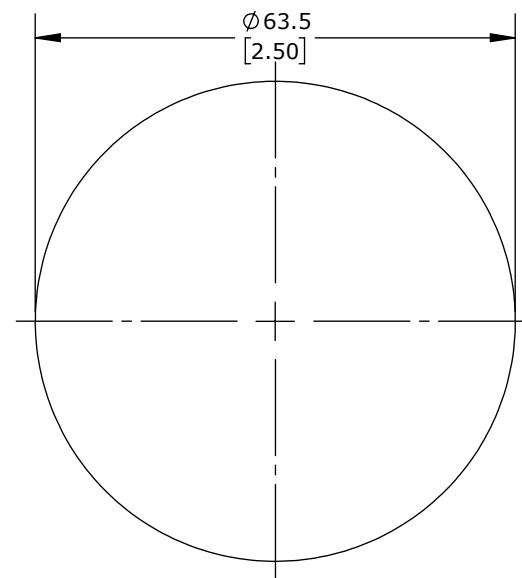
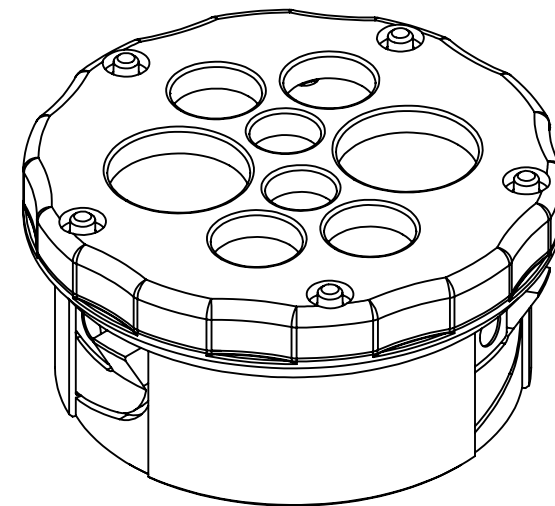
5-9.2MM
OPENING
X4

9.6-15.9MM
OPENING
X2

9.4
[0.37]

25.6
[1.01]

M63-1.5
THREAD



PANEL CUTOUT
DETAIL

MURRPLASTIK KDP/R SERIES GENERAL PURPOSE FRAME

565209

AutomationDirect.com
1-800-633-0405



3rd
ANGLE

NOT TO
SCALE

PART DIMENSIONS MAY DIFFER SLIGHTLY
DUE TO MANUFACTURER'S VARIANCES

METRIC UNITS USED
FOR PART DESIGN

UNLESS OTHERWISE
SPECIFIED UNITS ARE:

mm
[inch]

LATEST VERSION
3/30/2022

SHEET 1 OF 1