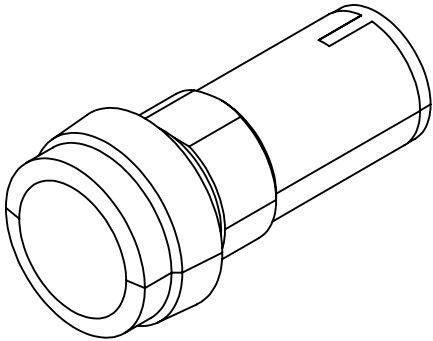


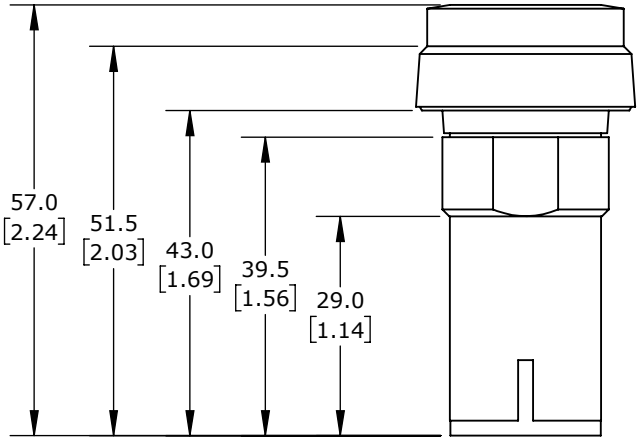
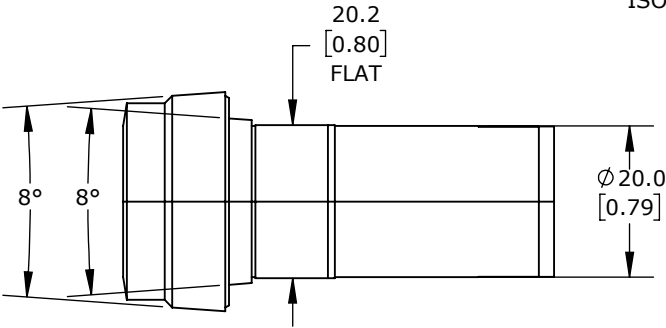
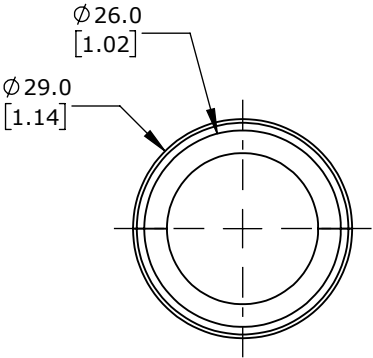
SUPPORT PANEL THICKNESS:

1 TO 6MM/0.4 TO 0.24", (METAL)

2 TO 6MM/0.8 TO 0.24", (PLASTIC)



ISOMETRIC VIEW



IDEM COMPACT PUSHBUTTON, IP65, 22MM, MOMENTARY, LED, (1) N.C. CONTACT(S), PLASTIC BASE, PLASTIC BEZEL, OPERATOR:
GREEN, FLUSH, 22MM, ROUND, PLASTIC, 24 VAC/VDC, FULL VOLTAGE. FOR USE WITH UGB SERIES UNIVERSAL GATE BOXES.

522352

AutomationDirect.com
1-800-633-0405



3rd
ANGLE

NOT TO
SCALE

PART DIMENSIONS MAY DIFFER SLIGHTLY
DUE TO MANUFACTURER'S VARIANCES

METRIC UNITS USED
FOR PART DESIGN

UNLESS OTHERWISE
SPECIFIED UNITS ARE:

mm
[inch]

LATEST VERSION
6/25/2024

SHEET 1 OF 1