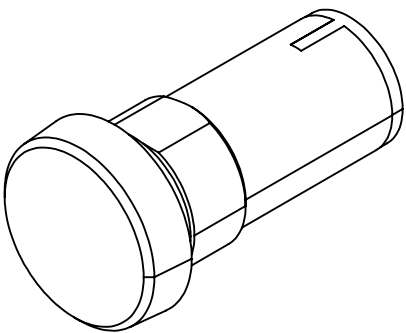


SUPPORT PANEL THICKNESS:

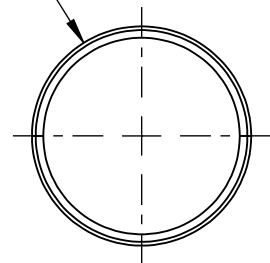
1 TO 6MM/0.4 TO 0.24", (METAL)

2 TO 6MM/0.8 TO 0.24", (PLASTIC)

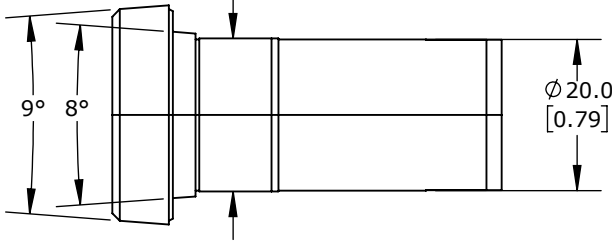


ISOMETRIC VIEW

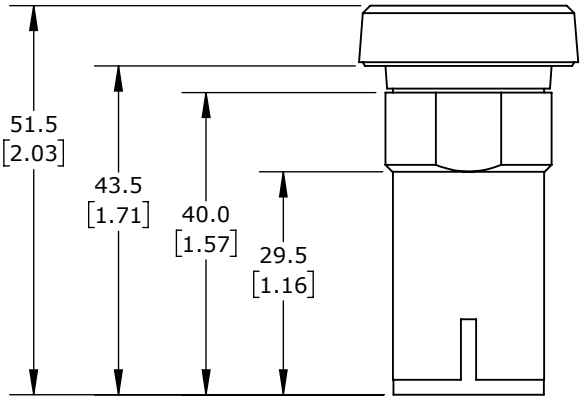
Ø 29.0  
[1.14]



20.2  
[0.80]  
FLAT



Ø 20.0  
[0.79]



IDEM COMPACT PUSHBUTTON, IP65, 22MM, MOMENTARY, (1) N.O./ (1) N.C. CONTACT(S), PLASTIC BASE, PLASTIC BEZEL, OPERATOR: BLUE, FLUSH, 22MM, ROUND, PLASTIC. FOR USE WITH UGB SERIES UNIVERSAL GATE BOXES.

522334

AutomationDirect.com  
1-800-633-0405



3rd  
ANGLE

NOT TO  
SCALE

PART DIMENSIONS MAY DIFFER SLIGHTLY  
DUE TO MANUFACTURER'S VARIANCES

METRIC UNITS USED  
FOR PART DESIGN

UNLESS OTHERWISE  
SPECIFIED UNITS ARE:

mm  
[inch]

LATEST VERSION  
6/25/2024

SHEET 1 OF 1