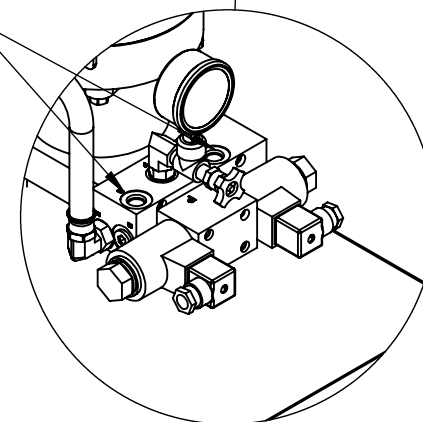


SAE O-RING BOSS (ORB) #6
A / B HYDRAULIC
CONNECTION



DETAIL A
SCALE 1 : 6

3 GPM, 1500 PSI, 9 GAL RESERVOIR, 3HP, 115/230 VAC OPERATING
VOLTAGE. BUCHER PART NUMBER:M4505351D21HR01

BUCHER M-SERIES HYDRAULIC POWER UNIT

51045050008

AutomationDirect.com
1-800-633-0405



3rd
ANGLE

NOT TO
SCALE

PART DIMENSIONS MAY DIFFER SLIGHTLY
DUE TO MANUFACTURER'S VARIANCES

INCH UNITS USED FOR
PART DESIGN

UNLESS OTHERWISE
SPECIFIED UNITS ARE:

inch
[mm]

LATEST VERSION
7/15/2024

SHEET 1 OF 1