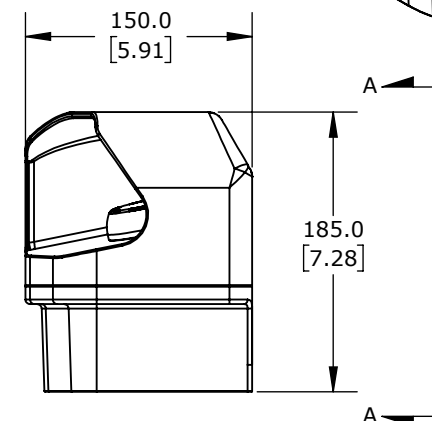
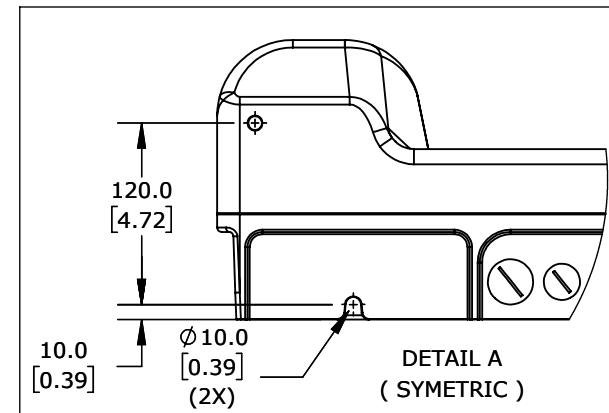


ISOMETRIC VIEW



RED / GREEN LED'S,
BOTH PUSHBUTTONS



IDEM CONTROL PANEL, TWO-HAND SAFETY, DIE-CAST ALUMINUM, (2) TOUCH SWITCHES, ZERO FORCE, BLACK/BLACK, LED, RED/GREEN, (1) N.O./(1) N.C. AND (1) N.O./(1) N.C. CONTACT(S).

2H-240001

AutomationDirect.com
1-800-633-0405



3rd
ANGLE

NOT TO
SCALE

PART DIMENSIONS MAY DIFFER SLIGHTLY
DUE TO MANUFACTURER'S VARIANCES

METRIC UNITS USED
FOR PART DESIGN

UNLESS OTHERWISE
SPECIFIED UNITS ARE:

mm
[inch]

LATEST VERSION
2/2/2023

SHEET 1 OF 1