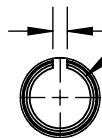
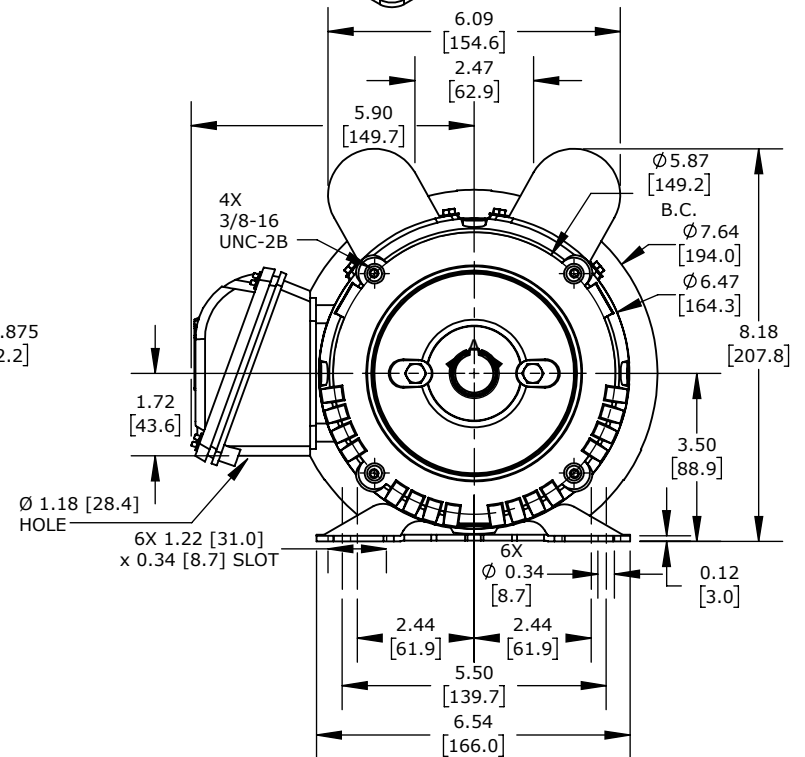
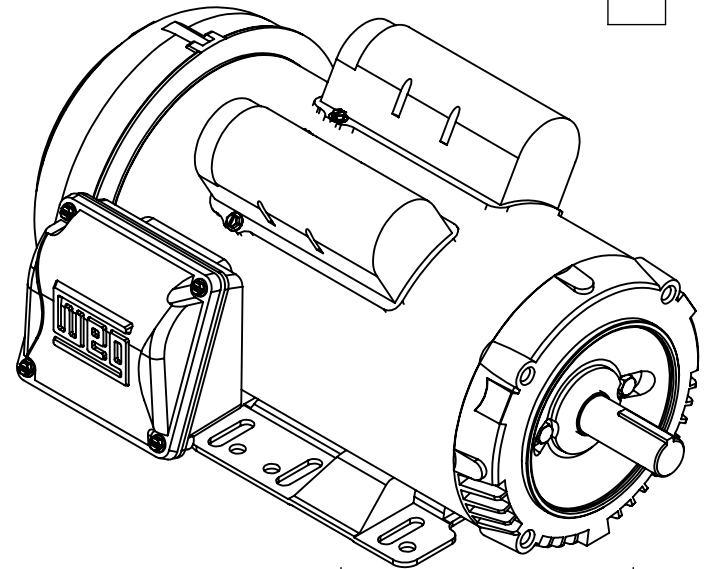


0.19 x 0.19
x 1.42 KEY

0.19
[4.8]



DETAIL A
SCALE 2:1



Ø 1.18 [28.4]
HOLE

6X 1.22 [31.0]
x 0.34 [8.7] SLOT

Ø 5.87
[149.2]

B.C.
Ø 7.64
[194.0]

Ø 6.47
[164.3]

Ø 6.47
[164.3]

Ø 6.47
[164.3]

Ø 6.47
[164.3]

Ø 6.47
[164.3]

Ø 6.47
[164.3]

Ø 6.47
[164.3]

Ø 6.47
[164.3]

Ø 6.47
[164.3]

Ø 6.47
[164.3]

Ø 6.47
[164.3]

WEG ELECTRIC S SERIES STANDARD EFFICIENCY AC INDUCTION MOTOR, GENERAL PURPOSE, 2HP, 1-PH, 115/208-230 VAC, 1800RPM, TEFC, 143/5C FRAME, ROLLED STEEL, RIGID BASE/C-FACE MOUNT

00218ES1B145TC-S

AutomationDirect.com
1-800-633-0405



3rd
ANGLE

NOT TO
SCALE

PART DIMENSIONS MAY DIFFER SLIGHTLY
DUE TO MANUFACTURER'S VARIANCES

METRIC UNITS USED
FOR PART DESIGN

UNLESS OTHERWISE
SPECIFIED UNITS ARE:

inch
[mm]

LATEST VERSION
12/12/2022

SHEET 1 OF 1