

AUTOMATIONDIRECT.com



# Wrenches

## Buying Guide



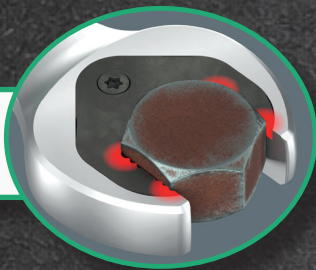
# Combination Wrenches

## Why Wera?

The Joker ratcheting combination wrench isn't just a wrench with a ratchet added — it's a rethink of how a wrench should work. A metal plate in the open jaw grips the fastener so you don't have to hold it in place, a limit-stop prevents the wrench from slipping off under load, and a 30° return angle means you can actually use it in tight quarters. Available in metric and imperial, individually or as a set.

- Holding function — Serrated metal plate in the open jaw grips the fastener so you don't need your thumb as a depth stop.
- Limit-stop — Prevents the wrench from slipping off the fastener under load.
- 30° ratchet return angle — Fine-tooth ring ratchet works in spaces where a full swing isn't possible.
- Double-hex box end — Engages flat faces, not corners — reduces rounding under high torque.
- Chrome moly construction — Corrosion-resistant nickel-chrome coating over chrome molybdenum steel.
- Take It Easy color-coding — Size bands on the handle let you pull the right wrench at a glance.
- Tray set available — 11-piece metric set in Wera's two-color foam insert for quick inventory checks.

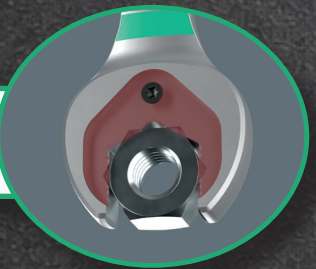
Double-hex box end



Integrated limit stop



Holding function



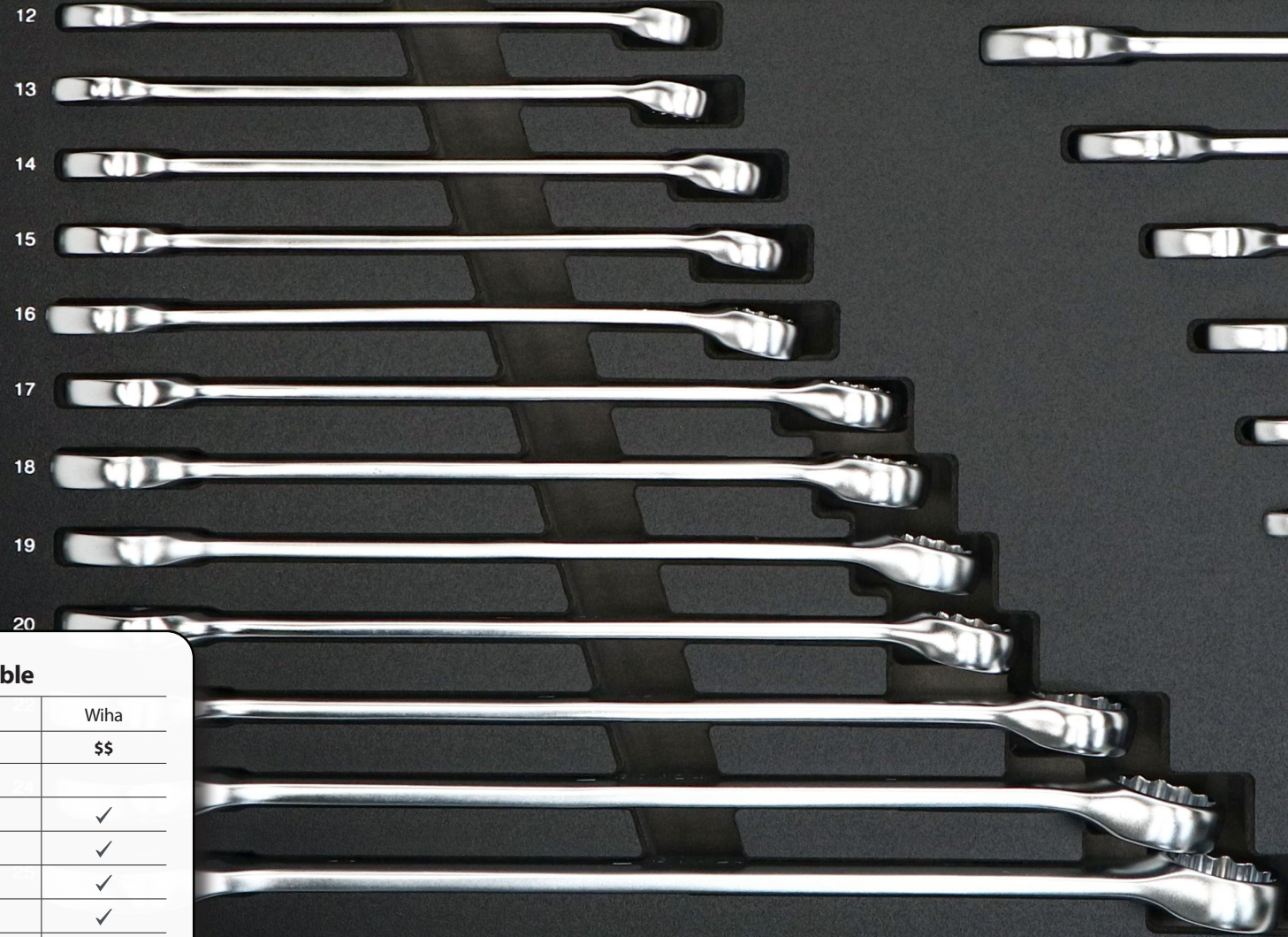
30° return angle



## Why Wiha?

Wiha combination wrenches are precision-built tool steel in a configuration designed for daily professional use. The 12-point box-end loads force onto the fastener's flat faces rather than its corners, and the 15° offset open-end means you can flip the wrench between rotations without repositioning your hand. Where Wiha stands apart is the tray: a full-drawer foam set covering both metric and imperial in a single organized pull — ratcheting or non-ratcheting, your choice.

- 12-point box-end — Engages flat sides of the fastener head, not corners — reduces rounding risk.
- 15° open-end angle — Flip the wrench between rotations without repositioning your hand.
- Chrome-plated satin finish — Corrosion-resistant and easy to clean.
- Premium tool steel — Forged construction for consistent torque transfer across the full size range.
- Boldly stamped sizing — Easy to read at a glance, even in low light.
- Full-drawer tray set — 31-piece metric and imperial in labeled tri-layer foam.
- Ratcheting and non-ratcheting configurations available.



Comparison Table

Attributes	Wera	Wiha
Cost	\$\$\$	\$\$
Holding Function	✓	
Ratcheting	✓	✓
Non-Ratcheting		✓
Imperial	✓	✓
Metric	✓	✓
Tray Storage	✓	✓

# Adjustable Wrenches

## Why Wera?

A standard adjustable wrench requires you to set the jaw, reposition when tightening/loosening, and reset it every time you change fasteners. The Wera Joker adjustable eliminates all three steps. It automatically grips any hex fastener in its range the moment you apply pressure — no thumbwheel, no adjustment. Add a built-in ratchet with a 30° return angle and you have an adjustable wrench you can actually use like a ratchet in tight spaces. For electrical work, a VDE-insulated version is individually tested to 10,000V and rated for safe use up to 1,000V.

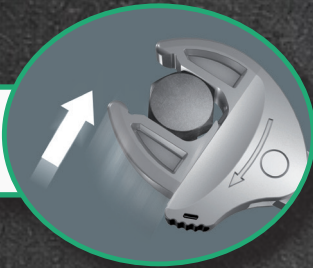
- Self-adjusting jaws — Grips any hex fastener in its range automatically — no thumbwheel, no adjustment
- Lever-actuated grip — Clamps parallel jaws onto the fastener under load, preventing slippage and fastener damage
- Ratcheting function — Drive fasteners without removing the wrench between turns
- 30° return angle — Ratchet in tight spaces where a full arc isn't possible
- Contactless jaw opening — Jaws release without touching the fastener, protecting finished surfaces
- VDE-insulated option — Individually tested to 10,000V, rated for live electrical work up to 1,000V
- Sets available — Standard and VDE sets in cloth pouch or foam tray

## Why Channellock?

Channellock adjustable wrenches are the reliable, no-nonsense option for everyday fastening tasks. Built from chrome vanadium steel with a chrome finish for rust resistance, these wrenches are designed around working comfort: a tapered handle that sits well in the hand, non-protruding jaws that access tight spaces without the wrench body getting in the way, and a precision 4-thread knurl that holds jaw position accurately during adjustment. Laser-engraved measurement scales are permanently marked — they won't rub off.

- Non-protruding jaws — Jaw profile stays within the wrench body width for access in tight locations
- 4-thread knurl adjuster — Finer pitch than standard improves adjustment accuracy and holds jaw position under load
- Laser-engraved scales — Permanent markings for nuts, pipe, and tube
- Chrome vanadium steel — Rugged construction for long-term daily use
- Chrome finish — Corrosion-resistant for wet or harsh environments
- Extra-wide jaw models — Greater jaw opening for larger fasteners in tight spaces

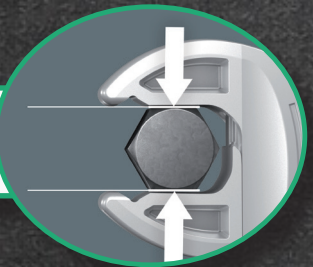
Self-adjusting jaws



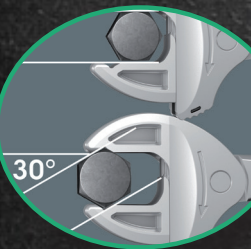
Ratcheting function



Lever-actuated grip



30° return angle



Comparison Table

Attributes	Wera	Channellock
Cost	\$\$\$	\$
Ratcheting functionality	✓	
Automatic self-setting	✓	
Extra wide jaws		✓
Knurl adjustment		✓
Insulated	✓	
Tray Storage	✓	

