

Overview

KDL/D and KDL/D-MONO Cable Entry System

The KDL/D and KDL/D-MONO cable entry systems allow a cable to be installed through an enclosure or other bulkhead surfaces, with the added benefit that pre-made, terminated cables can be installed without disassembling the connectors.

The KDL/D Series is a split-frame system that enables the quick and simple installation of up to 48 cables in a single frame. The KDL/D-MONO series is a round split-frame that enables the quick and simple installation of up to 8 cables in a single frame.

The KDL/D and KDL/D-MONO cable systems' robust multi-part frame design gives better mechanical stability while achieving a high degree of environmental protection.

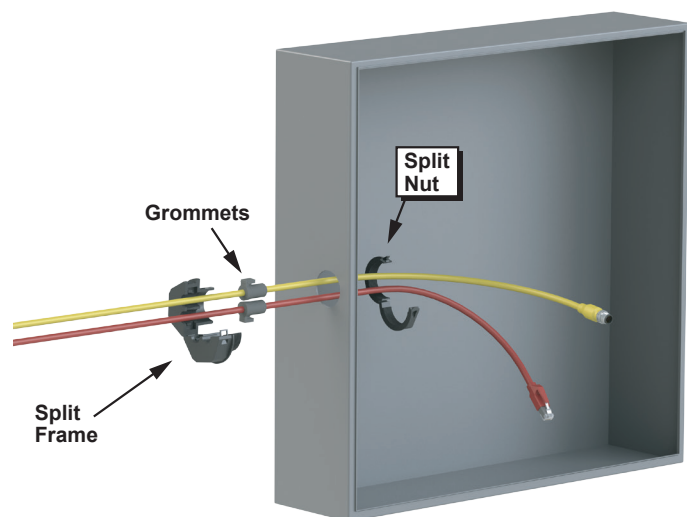
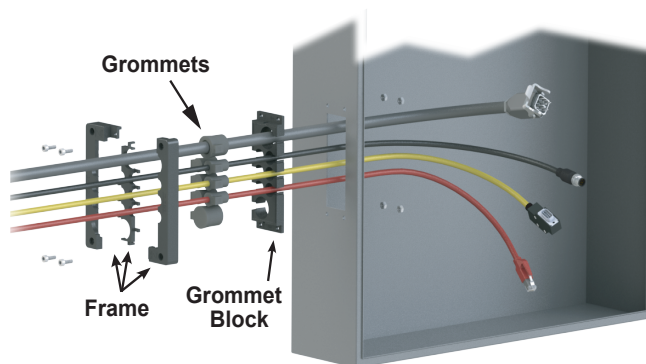


Features

- KDL/D available in 4 frame sizes
- KDL/D-MONO available in 3 frame sizes
- Uninterrupted cable guidance
- Easy assembly
- Integrated strain relief
- Fits standard cut-out dimensions
- High protection class IP65
- Matching grommets: KDT/X
- KDL/D 24/12, 16/8, 10/6, 6/4 - UL Type 1, 12
- KDL/D 24/9, 24/8, 24/4, 16/7, 16/3, 10/5, 10/2 - UL Type 1, 12, 4x indoor use only
- KDL/D-mono - UL Type 1, 12
- Operating temperature: -22 to 212°F [-30 to 100°C]
- Flammability: V0 - UL94
- Halogen-free
- 2-year warranty

Agency Approvals

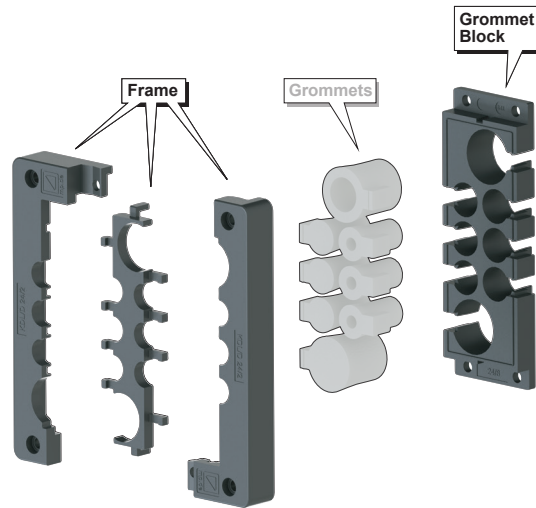
- cURus, meets UL508A under File E481225



Mounting hardware not included.
Recommended screw 4 x M5 (2.5 - 3.5 N•m)

Frames - KDL/D Series

The KDL/D series is a multi-part split-frame system that clamps together with a grommet block and uses the KDT/X series grommets to provide a high-density cable entry point with an IP65 environmental rating. The KDL/D system allows for easy installation of pre-assembled cables as well as non-terminated cables. The KDT/X series grommets are sold separately to allow the correct opening size for each cable. Depending on the grommet and frame combination used, up to 48 cables can be quickly and simply installed in a single frame. The grommet block is included with each frame. The KDT/X grommets are sold separately.



Frames - KDL/D Series						
Part Number	Price	Qty	Number of Openings Small / Medium / Large	Frame Size / Number of Openings	Drawing Link	Requires
Frame Size 24						
568321	\$40.00	1	12 / 0 / 0	KDL/D 24/12	PDF	(12) Murrplastik KDT/X series small grommets
568327	\$40.00	1	8 / 1 / 0	KDL/D 24/9	PDF	(8) Murrplastik KDT/X series small grommets and (1) medium grommet
568325	\$40.00	1	6 / 2 / 0	KDL/D 24/8	PDF	(6) Murrplastik KDT/X series small grommets and (2) medium grommets
568323	\$40.00	1	0 / 4 / 0	KDL/D 24/4	PDF	(4) Murrplastik KDT/X series medium grommets
568320	\$34.00	1	0 / 1 / 2	KDL/D 24/3	PDF	(2) Murrplastik KDT/X series large grommets and (1) medium grommet
Frame Size 16						
568329	\$40.00	1	8 / 0 / 0	KDL/D 16/8	PDF	(8) Murrplastik KDT/X series small grommets
568328	\$40.00	1	6 / 1 / 0	KDL/D 16/7	PDF	(6) Murrplastik KDT/X series small grommets and (1) medium grommet
568330	\$40.00	1	0 / 3 / 0	KDL/D 16/3	PDF	(3) Murrplastik KDT/X series medium grommets
568318	\$32.00	1	0 / 2 / 0	KDL/D 16/2	PDF	(2) Murrplastik KDT/X series large grommets
Frame Size 10						
568331	\$40.00	1	6 / 0 / 0	KDL/D 10/6	PDF	(6) Murrplastik KDT/X series small grommets
568332	\$40.00	1	4 / 1 / 0	KDL/D 10/5	PDF	(4) Murrplastik KDT/X series small grommets and (1) medium grommet
568334	\$40.00	1	0 / 0 / 2	KDL/D 10/2	PDF	(2) Murrplastik KDT/X series medium grommets
Frame Size 6						
568333	\$27.50	1	4 / 0 / 0	KDL/D 6/4	PDF	(4) Murrplastik KDT/X series small grommets
Special Frame Size						
568317	\$34.00	1	4 / 0 / 0	KDL/D-R M50/4	PDF	(4) Murrplastik KDT/X series small grommets

Frame:
PP
(Polypropylene)

Grommet
Block TPE
(Thermoplastic
Elastomer)



[568321](#)



[568329](#)



[568331](#)



[568333](#)



[568317](#)

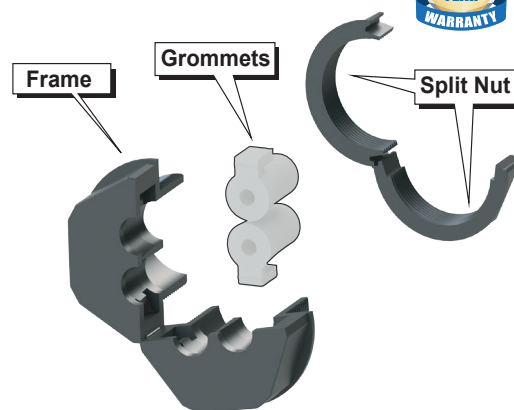
Notes: Meets UL508A under File E481225

Mounting hardware not included with frames. Recommended screw: 4 x M5 [2.5 to 3.5 N·m]



Frames - KDL/D-MONO Series

The KDL/D-MONO series is a multi-part split-frame system that clamps together using the KDT/X series grommets to provide a high-density cable entry point with an IP65 environmental rating. The KDL/D system allows for easy installation of pre-assembled cables as well as non-terminated cables. The KDT/X series grommets are sold separately to allow the correct opening size for each cable. Depending on the grommet and frame combination used, up to 8 cables can be quickly and simply installed in a single frame. The split nut is included with each frame.



Frames - KDL/D-Mono Series						
Part Number	Price	Qty	Number of Openings Small / Medium / Large	Frame Size / Number of Openings	Requires	Drawing Link
Frame Size M25 x 1.5mm						
568610	\$58.00	5	1 / 0 / 0	KDL/D-mono 1 M25	(1) Murrplastik KDT/X series small grommets	PDF
Frame Size M32 x 1.5mm						
568620	\$62.00	5	0 / 1 / 0	KDL/D-mono 1 M32	(1) Murrplastik KDT/X series medium grommets	PDF
Frame Size M40 x 1.5mm						
568630	\$65.00	5	2 / 0 / 0	KDL/D-mono 2 M40	(2) Murrplastik KDT/X series small grommets	PDF
568636	\$65.00	5	0 / 1 / 0	KDL/D-mono 1 M40	(1) Murrplastik KDT/X series medium grommets	PDF
Frame Size M50 x 1.5mm						
568640	\$80.00	5	0 / 0 / 1	KDL/D-mono 1 M50	(1) Murrplastik KDT/X series large grommets	PDF

Frame:
Polyamide 6



[568610](#)



[568620](#)

Note: Meets UL508A under File E481225



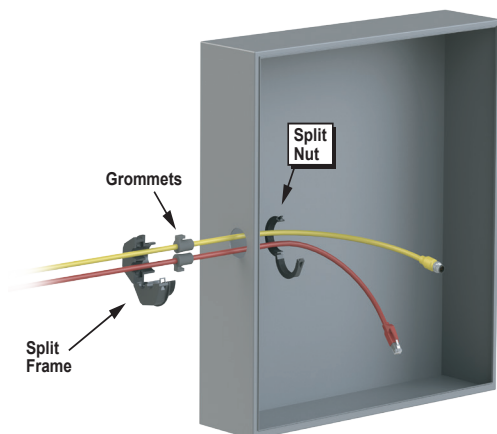
[568630](#)



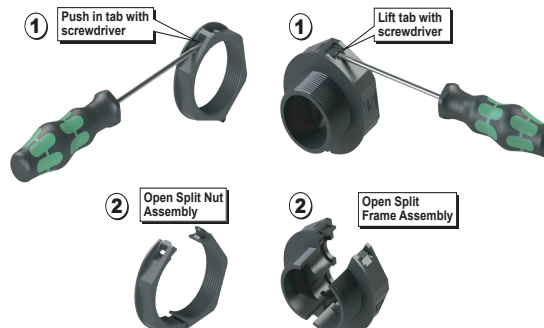
[568636](#)



[568640](#)

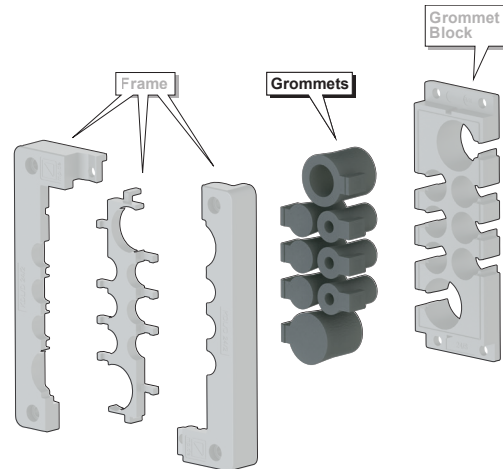


How to open Split Nut and Split Frame



Grommets (Small) KDT/X Series

The KDT/X series grommets are perfect for cable entries of round cables. The small version can accept cable diameters between 0.08 to 0.47 inches [2 to 12 mm]. Also available for higher density are the double cable grommets and multi-line grommets that can accept more than a single cable. A blank grommet is also available for any unused small openings in the grommet block.



Grommets (Small) - KDT/X Series							
Part Number	Price	Qty	For Use With Cable Ø mm [inches]	Number of Openings	Type	Drawing Link	Material
Single Cable Grommets for Small Opening							TPE (Thermoplastic Elastomer)
568335	\$10.00	4	2 - 3 [0.08 - 0.12]	1	KDT/X 02 ¹	PDF	
568337	\$10.00	4	3 - 4 [0.12 - 0.16]		KDT/X 03 ¹	PDF	
568339	\$10.00	4	4 - 5 [0.16 - 0.20]		KDT/X 04 ¹	PDF	
568341	\$10.00	4	5 - 6 [0.20 - 0.24]		KDT/X 05 ¹	PDF	
568343	\$10.00	4	6 - 7 [0.24 - 0.28]		KDT/X 06 ¹	PDF	
568345	\$10.00	4	7 - 8 [0.28 - 0.31]		KDT/X 07 ¹	PDF	
568347	\$10.00	4	8 - 9 [0.31 - 0.35]		KDT/X 08 ¹	PDF	
568349	\$10.00	4	9 - 10 [0.35 - 0.39]		KDT/X 09 ¹	PDF	
568351	\$10.00	4	10 - 11 [0.39 - 0.43]		KDT/X 10 ¹	PDF	
568353	\$10.00	4	11 - 12 [0.43 - 0.47]		KDT/X 11 ¹	PDF	
568395	\$10.00	4	Blank	0	BTK/X ¹	PDF	
Double Cable Grommet For Small Opening							
568399	\$17.50	4	2 [0.08] ³	2	KDT/X 2x2 ²	PDF	
568403	\$17.50	4	3 - 3.5 [0.12-0.14] ³		KDT/X 2x3 ²	PDF	
568407	\$17.50	4	4 [0.16] ³		KDT/X 2x4 ²	PDF	
Multi-Line Grommet For Small Opening							
568401	\$17.50	4	2 [0.08] ³	4	KDT/X 4x2 ²	PDF	
568405	\$17.50	4	3 [0.12] ³		KDT/X 4x3 ²	PDF	
568409	\$17.50	4	4 [0.16] ³		KDT/X 4x4 ²	PDF	

Notes: ¹ Meets UL508A under File E481225.

² For use with KDL/D and KDL/D Mono.

³ IP65 rating is met when used with cable of specified diameter.



[568335](#)



[568395](#)



[568399](#)

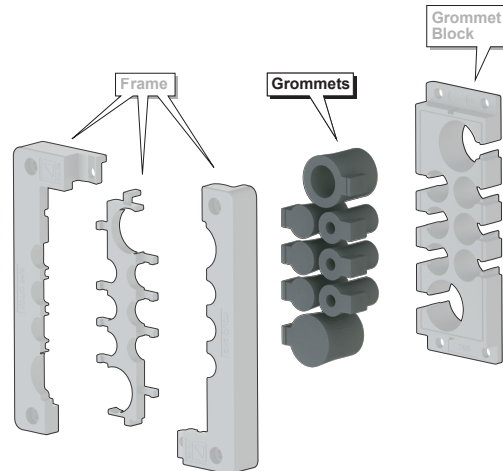


[568401](#)



Grommets (Medium) KDT/X Series

The KDT/X series grommets are perfect for round cables. The medium version can accept cable diameters between 0.47 to 0.87 inches [12 to 22mm]. Also available for higher cable density are the double cable grommets and multi-line grommets that can accept more than a single cable. A blank grommet is also available for any unused medium openings in the grommet block.



Grommets (Medium) - KDT/X Series							
Part Number	Price	Qty	For Use With Cable Ø mm [Inches]	Number of Openings	Type	Drawing Link	Material
Single Cable Grommets for Medium Opening							TPE (Thermoplastic Elastomer)
568355	\$18.50	4	12 - 13 [0.47 - 0.51]	1	KDT/X 12 ¹	PDF	
568357	\$18.50	4	13 - 14 [0.51 - 0.55]		KDT/X 13 ¹	PDF	
568359	\$18.50	4	14 - 15 [0.55 - 0.59]		KDT/X 14 ¹	PDF	
568361	\$18.50	4	15 - 16 [0.59 - 0.63]		KDT/X 15 ¹	PDF	
568363	\$18.50	4	16 - 17 [0.63 - 0.67]		KDT/X 16 ¹	PDF	
568365	\$18.50	4	17 - 18 [0.67 - 0.71]		KDT/X 17 ¹	PDF	
568367	\$18.50	4	18 - 19 [0.71 - 0.75]		KDT/X 18 ¹	PDF	
568369	\$18.50	4	19 - 20 [0.75 - 0.79]		KDT/X 19 ¹	PDF	
568371	\$18.50	4	20 - 21 [0.79 - 0.83]		KDT/X 20 ¹	PDF	
568373	\$18.50	4	21 - 22 [0.83 - 0.87]		KDT/X 21 ¹	PDF	
568391	\$18.50	4	Blank	0	BTG/X ¹	PDF	
Double Cable Grommet For Medium Opening							
568411	\$25.00	4	5 [0.20] ³	2	KDT/X 2x5 ²	PDF	
568414	\$25.00	4	6 [0.24] ³		KDT/X 2x6 ²	PDF	
568416	\$25.00	4	7 [0.28] ³		KDT/X 2x7 ²	PDF	
568419	\$25.00	4	8 [0.31] ³		KDT/X 2x8 ²	PDF	
Multi-Line Grommet For Medium Opening							
568413	\$25.00	4	5 [0.20] ³	4	KDT/X 4x5 ²	PDF	
568415	\$25.00	4	6 [0.24] ³		KDT/X 4x6 ²	PDF	
568417	\$25.00	4	7 [0.28] ³		KDT/X 4x7 ²	PDF	
568421	\$25.00	4	8 [0.31] ³		KDT/X 4x8 ²	PDF	

**568355****568391****568411****568413**

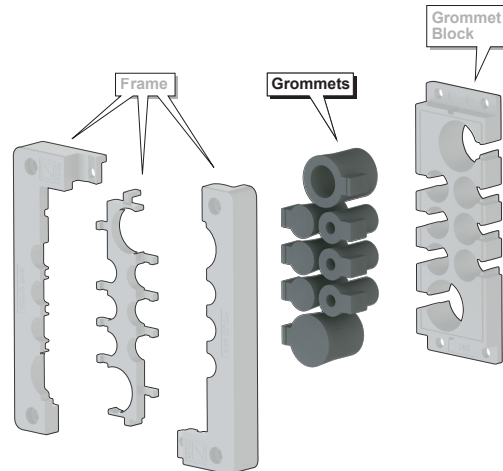
Notes: ¹ Meets UL508A under file E481225.

² For use with KDL/D and KDL/D Mono.

³ IP65 rating is met when used with cable of specified diameter.

Grommets (Large) KDT/X Series

The KDT/X series grommets are perfect for round cables. The large version can accept cable diameters between 0.87 to 1.18 inches [22 to 30mm]. Also available for higher cable density are the double cable grommets and multi-line grommets that can accept more than a single cable. A blank grommet is also available for any unused medium openings in the grommet block.



Grommets (Large) - KDT/X Series							
Part Number	Price	Qty	For Use With Cable Ø mm [Inches]	Number of Openings	Type	Drawing Link	Material
Single Cable Grommets for Large Opening							TPE (Thermoplastic Elastomer)
568375	\$16.50	4	22 - 23 [0.87 - 0.91]	1	KDT/X 22 ¹	PDF	
568377	\$16.50	4	23 - 24 [0.91 - 0.94]		KDT/X 23 ¹	PDF	
568379	\$16.50	4	24 - 25 [0.94 - 0.98]		KDT/X 24 ¹	PDF	
568381	\$16.50	4	25 - 26 [0.98 - 1.02]		KDT/X 25 ¹	PDF	
568383	\$16.50	4	26 - 27 [1.02 - 1.06]		KDT/X 26 ¹	PDF	
568385	\$16.50	4	27 - 28 [1.06 - 1.10]		KDT/X 27 ¹	PDF	
568387	\$16.50	4	28 - 29 [1.10 - 1.14]		KDT/X 28 ¹	PDF	
568389	\$16.50	4	29 - 30 [1.14 - 1.18]		KDT/X 29 ¹	PDF	
568397	\$18.00	4	Blank	0	BTG/XL ¹	PDF	

Notes: ¹ Meets UL508A under File E481225.

For use with KDL/D and KDL/D Mono.

IP65 rating is met when used with cable of specified diameter.



[568375](#)



[568389](#)



[568397](#)

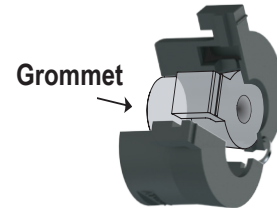
Grommet Adapter - ATG/X Series

The ATG/X series grommet adapter gives the flexibility of installing a small grommet into medium grommet openings, allowing greater flexibility in your cabling applications.

Grommet Adapter - ATG/X Series					
Part Number	Price	Qty	Type	Drawing Link	Material
568393	\$23.50	4	ATG/X ¹	PDF	TPE (Thermoplastic Elastomer)



568393

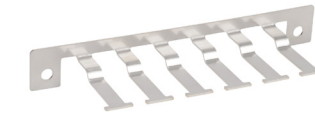


Discharge Plate - KDL-AB Series

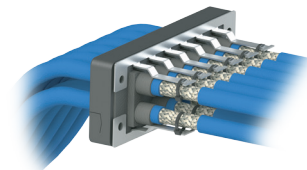
The discharge plate provides a means to eliminate interference that can occur on cable shields. The discharge plate can be used with the KDL/D 24/12 (ADC part number 568321) frame only and should be installed on the inside of the control cabinet, directly to the fixing points of the cable entry frame. The discharge plate is made of high-quality 1.4310 (V2A) stainless steel. The KDL/D 24/12 frame can accommodate either 1 or 2 discharge plates.

Discharge Plate - KDL-AB Series							
Part Number	Price	Qty	Number Of Discharges	Type	Material	Drawing Link	For Use With
569321	\$49.50	1	6	KDL-AB 24/6-EMV ¹	Stainless Steel 1.4310 (V2A)	PDF	568321

Note: ¹ No UR approval



569321 2 shown in photo below



Features

- High stability
- Easy installation of the screen clip system
- Compact design

Overview

Cable Entry System KDP/X and KDP/R Series

The KDP/X and KDP/R cable entry systems are one-piece systems that allow for a high density of cables to pass through a small area of an enclosure or other bulkhead surfaces. The robust frame designs give better mechanical stability while achieving a high degree of environmental protection.

The KDP/X series is a fourth-generation cable entry frame with improved tool-free clip-in mounting and one instead of two elastomer layers. This is a great alternative to cable fittings when having many cables and space is an issue. These frames use standard cutouts with tool-free clip-in mounting or screw mounting options. The KDP/X series enables the quick and simple installation of up to 29 cables in a single frame.

The KDP/R series is a round type cable entry frame in 2 sizes, M50 x 1.5 mm or M63 x 1.5 mm. Designed to easily snap into 1.5 to 2.0 mm wall thickness or can be secured into place using the optional lock nut. The KDP/R series enables the quick and simple installation of up to 46 cables in a single frame.



Features

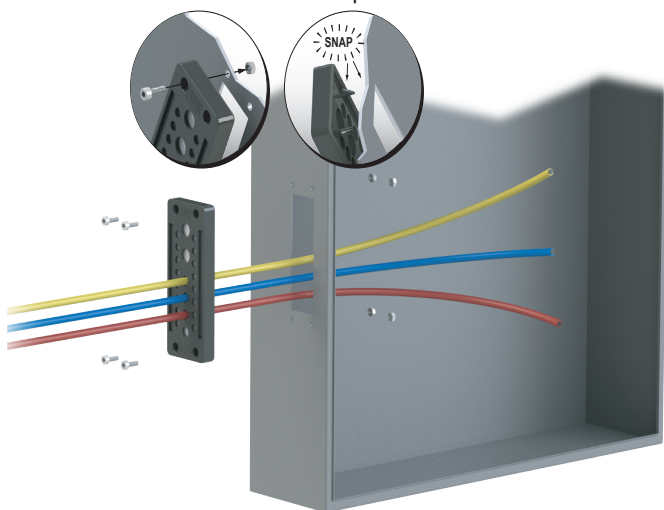
- Available in 2 frame types
- Quick and easy to install
- Mounting options:
Snap-in (both) or bolt-in (KDP/X) or lock nut (KDP/R)
- Integrated strain relief
- Fits standard cut-out dimensions
- High protection class IP65
- UL Type rating:
KDP/X - UL Type 1, 12 KDP/R - UL Type 1
- Operating temperature:
KDP/X -22 to 158°F [-30 to 70°C]
KDP/R -22 to 194°F [-30 to 90°C]
- Flammability: V0 - UL94 (frame)
- Halogen-free
- 2-year warranty

Agency Approvals

- cURus, meets UL508A underFile E481225

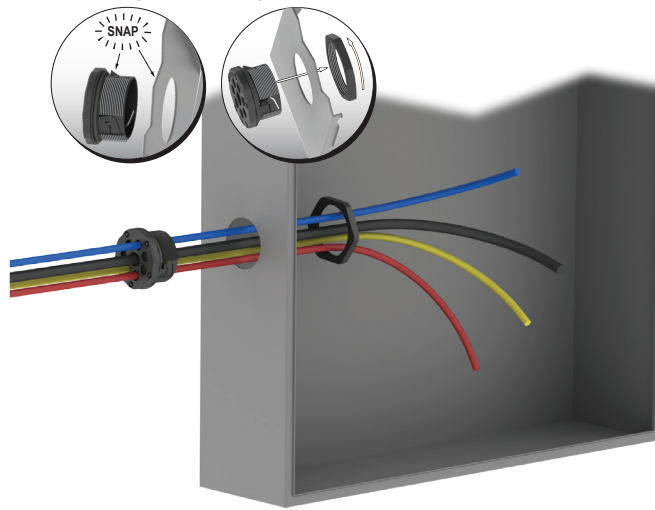
Two Ways to Mount

Bolt-In Snap-In



Two Ways to Mount

Snap-In Optional lock nut



Screw mounting hardware not included with frames. Recommended screw: 4 x M5 (0.8 to 1.2 N•m)
Tool-free clip-in mounting, frame thickness of 0.06 to 0.08 inches (1.5 to 2.0 mm) is required.

Frames - KDP/X Series

The KDP/X series is a fourth generation cable entry frame with improved tool-free clip-in mounting and one instead of two elastomer layers. This is a great alternative to cable fittings when having a large number of cables and space is an issue. These frames use standard cutouts with tool-free clip-in mounting for wall thickness 1.5 to 2mm or screw mounting options.

Frames - KDP/X Series						
Part Number	Price	Qty	Number of Openings	Type	Drawing Link	Material
Frame Size 24						
567305	\$47.50	1	(2) 3 to 6.5 mm (1) 5 to 9.2 mm (5) 9 to 14 mm (2) 14 to 20 mm	KDP/X 24/10	PDF	Frame: Polyamide 6.6 Seal: TPU/ EPDM Thermoplastic polyurethane/ [ethylene propylene diene monomer]
567315	\$47.50	1	(4) 3 to 6.5 mm (4) 5 to 9.2 mm (3) 14 to 20 mm	KDP/X 24/11	PDF	
567325	\$47.50	1	(12) 8 to 12 mm	KDP/X 24/12	PDF	
567335	\$47.50	1	(2) 3 to 5.5 mm (6) 4.1 to 8.1 mm (4) 9 to 14 mm (1) 14 to 20 mm	KDP/X 24/13	PDF	
567345	\$47.50	1	(6) 3 to 6.5 mm (4) 5 to 9.2 mm (4) 9.6 to 15.9 mm	KDP/X 24/14	PDF	
567355	\$47.50	1	(17) 5 to 9.2 mm	KDP/X 27/17	PDF	
567356	\$47.50	1	(11) 3 to 6.5 mm (1) 4.1 to 8.1 mm (5) 8 to 12.5 mm	KDP/X 24/17-1	PDF	
567398	\$47.50	1	(2) 3.5 to 6.5 mm (14) 5 to 9.2 mm (3) 7.5 to 11.5 mm	KDP/X 24/19	PDF	
567365	\$47.50	1	(16) 3 to 6.5 mm (4) 5 to 9.2 mm (2) 8 to 12.5 mm	KDP/X 24/22	PDF	
567399	\$47.50	1	(16) 3.5 to 6.5 mm (4) 7.5 to 11.5 mm (2) 9 to 14 mm	KDP/X 24/22-1	PDF	
567375	\$47.50	1	(23) 4.1 to 8.1 mm	KDP/X 24/23	PDF	
567385	\$47.50	1	(29) 3 to 6.5 mm	KDP/X 24/29	PDF	

Notes: Screw mounting hardware not included with frames. Recommended screw: 4 x M5 (0.8 to 1.2 N•m)
 Tool-free clip-in mounting, frame thickness of 0.06 to 0.08 inches (1.5 to 2.0 mm) is required.

[567345](#)[567305](#)[567315](#)[567325](#)[567335](#)[567355](#)[567356](#)[567375](#)[567365](#)[567399](#)[567385](#)[567398](#)

Frames - KDP/R Series Round

The KDP/R series is a round type cable entry frame in 2 sizes, M50 x 1.5 mm or M63 x 1.5 mm. Designed to easily snap into 1.5 to 2.0 mm wall thickness or can be secure into place using the optional lock nut. The KDP/R series enables the quick and simple installation of up to 46 cables in a single frame.

Frames - KDP/R Series Round *						
Part Number	Price	Qty	Number of Openings	Type	Drawing Link	Material
Frame Size M50 x 1.5 mm						Frame: Polyamide 6.6 Seal: EPDM [ethylene propylene diene monomer]
565201	\$48.00	1	(3) 6 to 10 mm (1) 9.6 to 15.9 mm	KDP/R M50/4	PDF	
565203	\$48.00	1	(1) 3 to 5.5 mm (5) 5 to 9.2 mm	KDP/R M50/6	PDF	
565205	\$48.00	1	(7) 3.5 to 6.5 mm (1) 6 to 10 mm	KDP/R M50/8	PDF	
565207	\$48.00	1	(31) 1.5 to 3.1 mm	KDP/R M50/31	PDF	
Frame Size M63 x 1.5 mm						
565209	\$49.00	1	(2) 3 to 6.5 mm (4) 5 to 9.2 mm (2) 9.6 to 15.9 mm	KDP/R M63/8	PDF	
565211	\$49.00	1	(6) 3 to 5.5 mm (6) 3.5 to 6.5 mm (1) 6 to 10 mm	KDP/R M63/13	PDF	
565213	\$49.00	1	(19) 3 to 5 mm	KDP/R M63/19	PDF	
565215	\$49.00	1	(46) 1.5 to 3.1 mm	KDP/R M63/46	PDF	

Note: UL rating not supported when nut is used to secure frame.
Hex nut not included, see table below.


[565201](#)

[565203](#)

[565205](#)

[565207](#)

[565209](#)

[565211](#)

[565213](#)

[565215](#)

Hex Nuts for KDP/R Series Round Frames

- -22 to 212°F [-30 to 100°C]
- UL94 VO self-extinguishing
- Polyamide PA 6

Hex Nuts For KDP/R Series Round Frames			
Part Number	Price	Description	Drawing Link
565250	\$16.00	Murrplastik hex nut, M50 x 1.5 mm thread type, polyamide, black. Package of 5.	PDF
565252	\$18.50	Murrplastik hex nut, M63 x 1.5 mm thread type, polyamide, black. Package of 5.	PDF


[565250](#)

Frames - KDP/Z Series

The KDP/Z series is an entry and fastening system for cables and pneumatic hoses used in control cabinets and machine construction. These frames use standard cutouts with tool-free clip-in mounting for wall thickness 1.5 to 2 mm or screw mounting options. Wherever quick assembly, cable protection, and high packing density are required, this frame can be used.

Features

- Quick and easy to install
- Mounting options:
 - Assemble with clips or M5 screws
- Integrated strain relief
- Fits standard cut-out dimensions
- High protection class IP65, IP66, IP67, IP69K
- UL Type rating:
 - UL Type rating 4X, 12
- Operating temperature:
 - -22 to 158°F [-30 to 70°C]
- Flammability: HB - UL94 (frame)
- 2-year warranty


[567415](#)

[567419](#)

[567417](#)

[567421](#)

Frames - KDP/Z Series						
Part Number	Price	Qty	Number of Openings	Type	Drawing Link	Material
Frame Size 24						Frame: Polypropylene (PP) Seal: Thermoplastic Elastomer (TPE)
567415	\$72.00	1	(3) 22-33mm	KDP/Z 24/3	PDF	
567417	\$72.00	1	(14) 7.5-12mm	KDP/Z 24/14	PDF	
567419	\$72.00	1	(2) 3-6mm (4) 5-9mm (3) 7.5-12mm (3) 10-16mm (2) 14-20mm	KDP/Z 24/14	PDF	
567421	\$72.00	1	(23) 5-9mm	KDP/Z 24/23	PDF	
Frame Size 16						
567405	\$69.00	1	(10) 7.5-12mm	KDP/Z 16/10	PDF	
567407	\$69.00	1	(2) 3-5mm (4) 5-9mm (2) 7.5-12mm (2) 10-16mm (2) 14-20mm	KDP/Z 16/12	PDF	
567409	\$69.00	1	(17) 5-9mm	KDP/Z 16/17	PDF	
567411	\$69.00	1	(16) 3-6mm (6) 5-9mm (2) 7.5-12mm	KDP/Z 16/24	PDF	
567413	\$69.00	1	(20) 2-4mm (20) 3-6mm	KDP/Z 16/40	PDF	
Frame Size 10						
567401	\$73.00	1	(14) 5-9mm	KDP/Z 10/14	PDF	
567403	\$74.00	1	(8) 3-8mm (3) 5-9mm (4) 7.5-12mm	KDP/Z 10/15	PDF	


[567405](#)

[567407](#)

[567409](#)

Notes: Screw mounting hardware not included with frames. Recommended screw: 4 x M5 (0.8 to 1.2 N•m)


[567403](#)

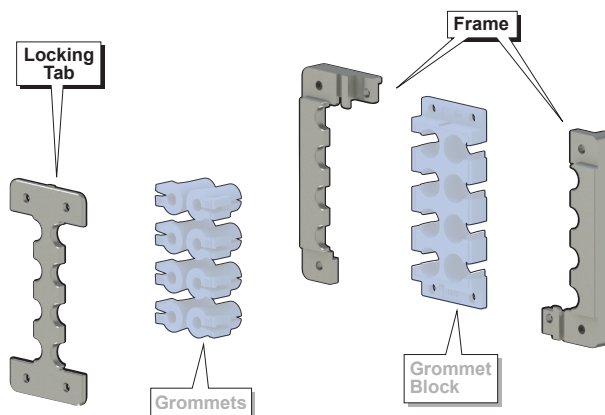
[567401](#)

[567413](#)

[567411](#)

Cable Entry Frames KDL/H-VA-FDA Series

The KDL/H-VA-FDA cable entry system is a frame plus grommet system that allows a cable to be installed through an enclosure or other bulkhead surfaces, with the added benefit that pre-made, terminated cables can be installed without disassembling the connectors. The KDL/H-VA FDA frames are made of stainless steel in conjunction with the grommet blocks and grommets made of TPE with FDA compliant material specially modified for Murrplastik to enable the use in the food and pharmaceutical industries. The robust frame design gives better mechanical stability while achieving a high degree of environmental protection.



Features

- 2-piece or 3-piece frame
- Easy assembly
- High packing density for up to 12 cables
- Integrated strain relief
- Suitable for standard cut-outs for 24-pin and 16-pin industrial connectors
- Operating temperature: -40 to 176°F [-40 to 80°C]
- Halogen free
- Matching grommet: KDT/X-FDA (purchase separately)
- FDA compliant per FDA 21 CFR
- Protection class IP69K
- 2-year warranty


591000

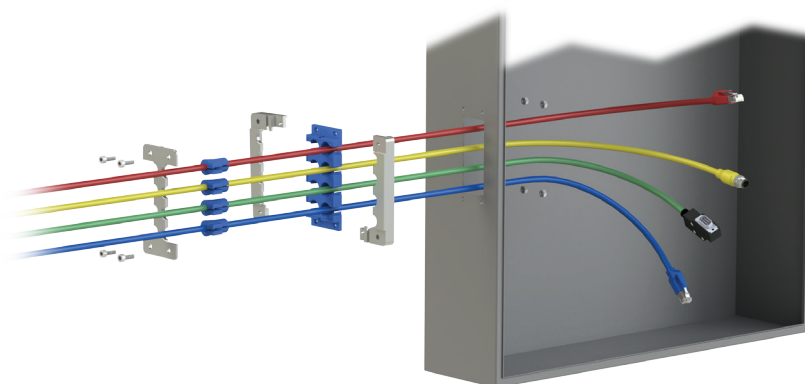
591003

591006

591009

591012

Cable Entry Frames - KDL/H-VA-FDA Series							
Part Number	Price	Qty	Number Of Openings	Type	Drawing Link	Requires (purchase separately)	Material
Frame Size 24							Frame: Stainless Steel
591000	\$507.00	1	(12) small	KDL/H-VA-FDA 24/12	PDF	(12) Murrplastik KDT/X-FDA series small grommets	
591003	\$432.00	1	(4) medium	KDL/H-VA-FDA 24/4	PDF	(4) Murrplastik KDT/X-FDA series medium grommets	
Frame Size 16							Grommet Block: FDA Compliant TPE (Thermoplastic Elastomer)
591006	\$477.00	1	(8) small	KDL/H-VA-FDA 16/8	PDF	(8) Murrplastik KDT/X-FDA series small grommets	
591009	\$428.00	1	(3) medium	KDL/H-VA-FDA 16/3	PDF	(3) Murrplastik KDT/X-FDA series medium grommets	
Frame Size 112 x 17 mm							
591012	\$362.00	1	(6) small	KDL/H-VA-FDA 1/6	PDF	(6) Murrplastik KDT/X-FDA series small grommets	

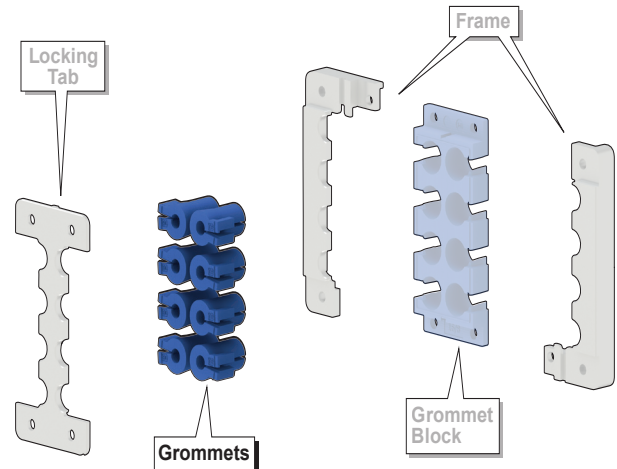


Note: Mounting Hardware not included.



Grommets - KDT/X FDA Series

The KDT/X FDA series grommets are perfect for cable entries of round cables. The small grommets can accept cable diameters between 0.08 to 0.47 inches (2 to 12 mm). The medium grommets can accept cable diameters between 0.47 to 0.87 inches (12 to 22 mm). A blank grommet is also available for any unused small or medium openings in the grommet block.



Grommets - KDT/X FDA Series							
Part Number	Price	Qty	For Use With Cable Ø mm [inches]	Number Of Openings	Type	Drawing Link	Material
Small Grommets							FDA compliant TPE (Thermoplastic Elastomer)
592222	\$12.00	4	2 to 3 [0.08 to 0.12]	1	KDT/X-FDA 02	PDF	
592224	\$12.00	4	3 to 4 [0.12 to 0.16]		KDT/X-FDA 03	PDF	
592226	\$12.00	4	4 to 5 [0.16 to 0.20]		KDT/X-FDA 04	PDF	
592228	\$12.00	4	5 to 6 [0.20 to 0.24]		KDT/X-FDA 05	PDF	
592230	\$12.00	4	6 to 7 [0.24 to 0.28]		KDT/X-FDA 06	PDF	
592232	\$12.00	4	7 to 8 [0.28 to 0.31]		KDT/X-FDA 07	PDF	
592234	\$12.00	4	8 to 9 [0.31 to 0.35]		KDT/X-FDA 08	PDF	
592236	\$12.00	4	9 to 10 [0.35 to 0.39]		KDT/X-FDA 09	PDF	
592238	\$12.00	4	10 to 11 [0.39 to 0.43]		KDT/X-FDA 10	PDF	
592240	\$12.00	4	11 to 12 [0.43 to 0.47]		KDT/X-FDA 11	PDF	
592262	\$12.00	4	–	Blank	BTK/X-FDA	PDF	
Medium Grommets							
592242	\$17.50	4	12 to 13 [0.47 to 0.51]	1	KDT/X-FDA 12	PDF	
592244	\$17.50	4	13 to 14 [0.51 to 0.55]		KDT/X-FDA 13	PDF	
592246	\$17.50	4	14 to 15 [0.55 to 0.59]		KDT/X-FDA 14	PDF	
592248	\$17.50	4	15 to 16 [0.59 to 0.63]		KDT/X-FDA 15	PDF	
592250	\$17.50	4	16 to 17 [0.63 to 0.67]		KDT/X-FDA 16	PDF	
592252	\$17.50	4	17 to 18 [0.67 to 0.71]		KDT/X-FDA 17	PDF	
592254	\$17.50	4	18 to 19 [0.71 to 0.75]		KDT/X-FDA 18	PDF	
592256	\$17.50	4	19 to 20 [0.75 to 0.79]		KDT/X-FDA 19	PDF	
592258	\$17.50	4	20 to 21 [0.79 to 0.83]		KDT/X-FDA 20	PDF	
592260	\$17.50	4	21 to 22 [0.83 to 0.87]		KDT/X-FDA 21	PDF	
592264	\$17.50	4	–	Blank	BTG/X-FDA	PDF	


592222

592240

592262

592242

592250

592260

Cable Entry Frames KDP FDA Cablequick® Series

The KDP FDA Cablequick cable entry system allows for a high density of cables to pass through a small area of an enclosure or other bulkhead surfaces. The KDP FDA Cablequick frames are made of stainless steel in conjunction with an elastomer with FDA compliant material specially modified for Murrplastik to enable the use in the food and pharmaceutical industries. The robust frame design gives better mechanical stability while achieving a high degree of environmental protection. Integrated threaded bolts mean that no screws are visible from outside. Mounting hardware is included. The KDP FDA cablequick series enables quick and simple installation of up to 56 cables in a single frame.

Features

- High stability
- Easy installation
- Operating temperature: -30 to 194°F [-30 to 90°C]
- Halogen free
- FDA compliant per FDA 21 CFR
- ECOLAB certified
- Protection class IP65
- 2-year warranty



Cable Entry Frames - KDP FDA Cablequick® Series						
Part Number	Price	Qty	Number Of Openings	Type	Drawing Link	Material
Frame Size 132 x 82 mm						Housing: Stainless Steel Seal: FDA compliant EPDM [ethylene propylene diene monomer]
593001	\$507.00	1	(18) 8 to 12mm	FDA cablequick® KDP 100/18	PDF	
593003	\$507.00	1	(24) 6 to 10.5 mm	FDA cablequick® KDP 100/24	PDF	
593005	\$507.00	1	(12) 3.5 to 6.2 mm (12) 6 to 10mm (6) 9 to 14mm	FDA cablequick® KDP 100/30	PDF	
593007	\$507.00	1	(40) 4.5 to 8.5 mm	FDA cablequick® KDP 100/40	PDF	
593009	\$507.00	1	(48) 3.5 to 6.2 mm (8) 6 to 10mm	FDA cablequick® KDP 100/56	PDF	



[593001](#)



[593003](#)



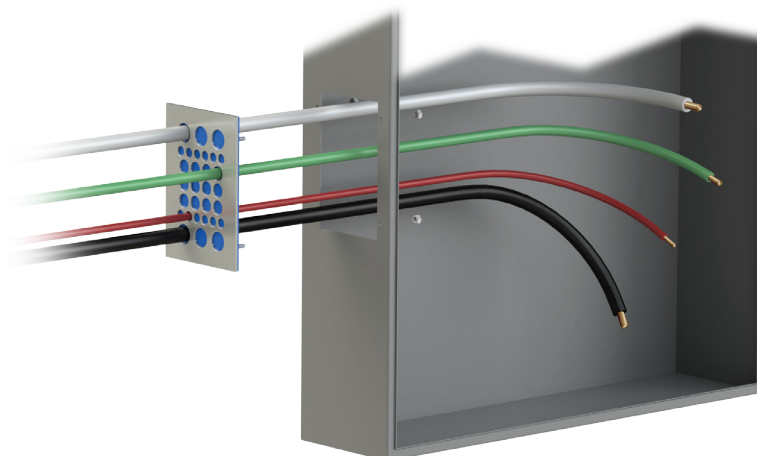
[593005](#)



[593007](#)



[593009](#)



bimed Cable Entry System



Overview

Frames - BPA Cable Entry

The BPA cable entry systems allow a cable to be installed through an enclosure or other bulkhead surfaces, with the added benefit that pre-made, terminated cables can be installed without disassembling the connectors. The BPA Series is a split-frame system that enables the quick and simple installation of up to 10 cables in a single frame. The grommets are pyramidal and their outer surface shapes are conical. This conicity ensures high strain relief when they are compressed into their conical seats. The BPA cable systems robust multi-part frame design gives better mechanical stability while achieving a high degree of IP66 and UL Type 12, 13, and 4X environmental protection.

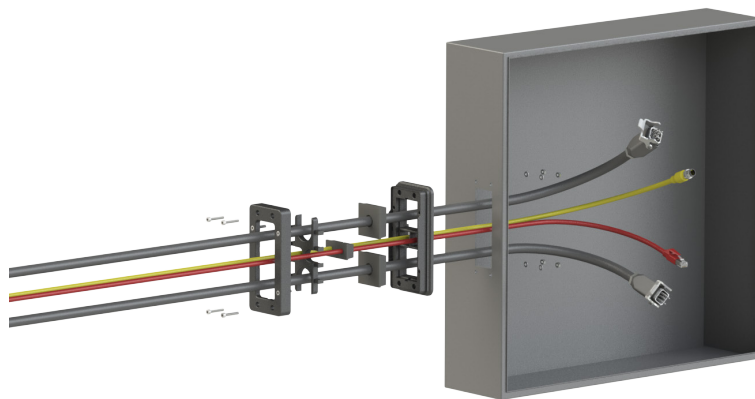


Features

- Uninterrupted cable guidance
- Easy assembly
- Integrated strain relief
- High protection class IP66, UL Type 12, 13, 4X
- Matching grommets: BPA series
- 2-year warranty
- Operating temperature: -40 to +176 °F [-40 to +80 °C]
- Flammability: HB (According to UL94)
- Halogen-free

Agency Approvals

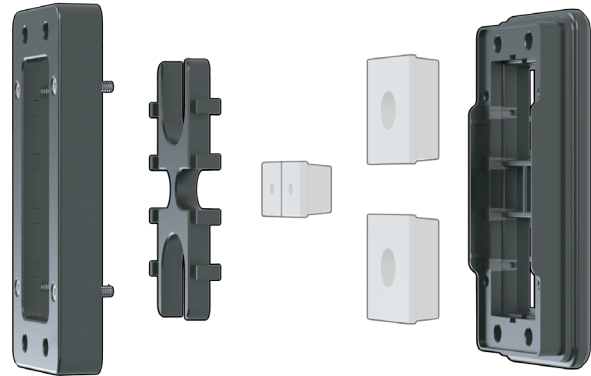
- cURus, meets UL 508A under file E467237



bimed Cable Entry System

Frames - BPA Series

The BPA series is a multi-part split-frame system that clamps together with a grommet block and uses the BPA series grommets to provide a high-density cable entry point with an IP66, UL Type 12,13, and 4X environmental rating. The system allows for easy installation of pre-assembled cables as well as non-terminated cable. The BPA series grommets are sold separately to allow the correct opening size for each cable. Depending on the grommet and frame combination used, up to 10 cables can be quickly and simply installed in a single frame. The grommet block is included with each frame.



Frames - BPA Series						
Part Number	Price	Qty	Number Of Openings Small / Large	Color	Drawing Link	Material
BPA-S-04-1-0	\$21.50	1	2/2	Gray	PDF	Frame and Grommet Block: PA Glass Fiber Reinforced
BPA-S-04-2-0	\$21.50		2/2	Black	PDF	
BPA-S-07-1-0	\$21.50		6/1	Gray	PDF	
BPA-S-07-2-0	\$21.50		6/1	Black	PDF	
BPA-S-10-1-0	\$21.50		10/0	Gray	PDF	
BPA-S-10-2-0	\$21.50		10/0	Black	PDF	

Note: Mounting hardware is included with frames. Screw size: M4x0,7x20 mm fitted with M3 Allen Head [0.40 Nm]



[BPA-S-04-1-0](#)



[BPA-S-04-2-0](#)



[BPA-S-07-1-0](#)



[BPA-S-10-1-0](#)



[BPA-S-10-2-0](#)



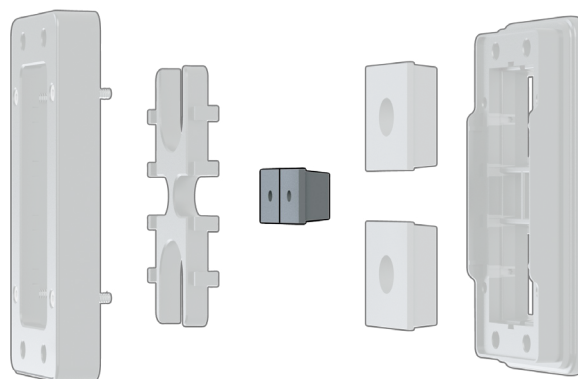
[BPA-S-07-2-0](#)

bimed Cable Entry System



Grommets (Small) BPA Series

The BPA series grommets are perfect for cable entries of round cables. The small version can accept cable diameters between 0.138 to 0.61 inches [3.5 to 15.5 mm].



Grommets (Small) - BPA Series							
Part Number	Price	Qty	For Use With Cable Ø mm [inches]	Number Of Openings	Color	Drawing Link	Material
Small Grommets							CR (Chloroprene)
BPA-S-0016C	\$7.50	4	3.5 to 5.5 [0.138 to 0.217]	1	Black	PDF	
BPA-S-0017C	\$7.50		5.5 to 7.5 [0.217 to 0.295]			PDF	
BPA-S-0018C	\$7.50		7.5 to 9.5 [0.295 to 0.374]			PDF	
BPA-S-0019C	\$7.50		9.5 to 11.5 [0.374 to 0.453]			PDF	
BPA-S-0020C	\$7.50		11.5 to 13.5 [0.453 to 0.531]			PDF	
BPA-S-0021C	\$7.50		13.5 to 15.5 [0.531 to 0.61]			PDF	
BPA-S-0029C	\$7.50		Blank	0		PDF	

Notes: Ingress protection is met when used with cable of specified diameter.



[BPA-S-0016C](#)



[BPA-S-0017C](#)



[BPA-S-0018C](#)



[BPA-S-0020C](#)



[BPA-S-0021C](#)



[BPA-S-0029C](#)

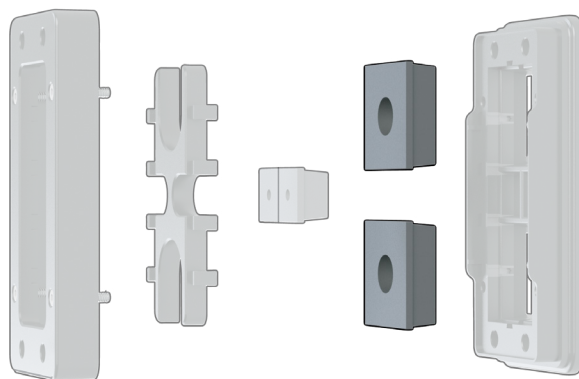


[BPA-S-0019C](#)

bimed Cable Entry System

Grommets (Large) BPA Series

The BPA series grommets are perfect for cable entries of round cables. The large version can accept cable diameters between 0.61 to 1.161 inches [15.5 to 29.5 mm].



Grommets (Large) - BPA Series							
Part Number	Price	Qty	For Use With Cable Ø mm [Inches]	Number Of Openings	Color	Drawing Link	Material
Large Grommets							CR (Chloroprene)
BPA-S-0022C	\$14.50	4	15.5 to 17.5 [0.61 to 0.689]	1	Black	PDF	
BPA-S-0023C	\$14.50		17.5 to 19.5 [0.689 to 0.768]			PDF	
BPA-S-0024C	\$14.50		19.5 to 21.5 [0.768 to 0.846]			PDF	
BPA-S-0025C	\$14.50		21.5 to 23.5 [0.846 to 0.925]			PDF	
BPA-S-0026C	\$14.50		23.5 to 25.5 [0.925 to 1.004]			PDF	
BPA-S-0027C	\$14.50		25.5 to 27.5 [1.004 to 1.083]			PDF	
BPA-S-0028C	\$14.50		27.5 to 29.5 [1.083 to 1.161]			PDF	
BPA-S-0030C	\$14.50		Blank	0		PDF	

Notes: Ingress protection is met when used with cable of specified diameter.



[BPA-S-0022C](#)



[BPA-S-0023C](#)



[BPA-S-0024C](#)



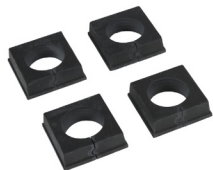
[BPA-S-0025C](#)



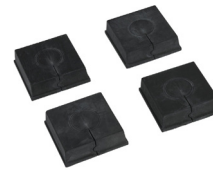
[BPA-S-0026C](#)



[BPA-S-0027C](#)



[BPA-S-0028C](#)



[BPA-S-0030C](#)

bimed Cable Entry System

Overview

Cable Entry System - BRM Series

The BRM cable entry system allows non-terminated cables to be installed through an enclosure or other bulkhead surfaces, allowing for a high density of cables to pass through a small area. The BRM Series is a one-piece system that enables the quick and simple installation of up to 29 cables in a single frame. The Ultra-flexible entrance membrane ensures ingress protection for a large range of cable diameters.



Features

- Available in 1 frame size
- Quick and easy to install
- Bolt-in or snap-in mounting
- Integrated strain relief
- Fits standard cut-out dimensions
- High protection class IP65, UL Type 12,13, 4X
- 2-year warranty
- Operating temperature: -40 to 176°F [-40 to 80°C]
- Flammability: HB (According to UL94)
- Halogen-free

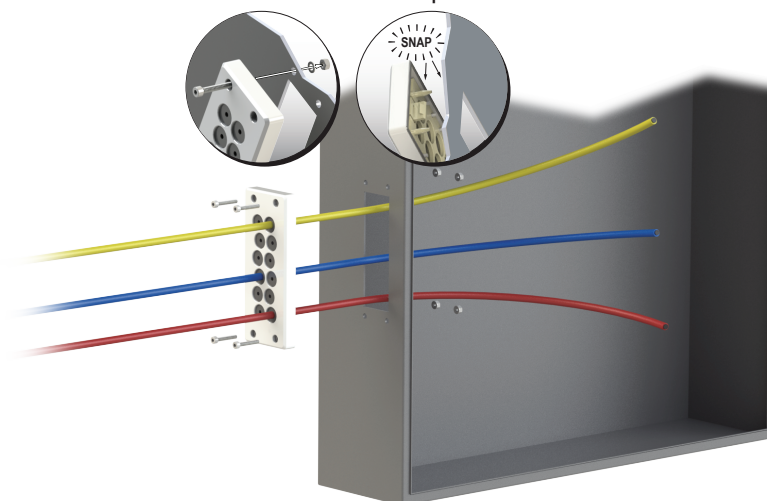
Agency Approvals

- cURus, meets UL508A under File E467237

Two Ways to Mount

Bolt-In

Snap-In



bimed Cable Entry System

Frames - BRM Series

The BRM Series Frames allow non-terminated cables to be installed through an enclosure or other bulkhead surfaces, allowing for a high density of cables to pass through a small area. A special back sealing design ensures "close fit" even if a cable is removed. This unique feature allows a cable to be inserted and removed as needed.

Frames - BRM Series						
Part Number	Price	Qty	Number Of Openings	Color	Drawing Link	Material
<u>BRM00-1</u>	\$9.75	1	0	Gray	<u>PDF</u>	Frame: PA Glass Fiber Reinforced Seal: Butyl (IIR) Rubber
<u>BRM00-2</u>	\$9.75		0	Black	<u>PDF</u>	
<u>BRM12-1</u>	\$21.00		(12) 4.0 to 13.0 mm	Gray	<u>PDF</u>	
<u>BRM12-2</u>	\$21.00		(12) 4.0 to 13.0 mm	Black	<u>PDF</u>	
<u>BRM14-1</u>	\$21.00		(14) 5.0 to 11.0 mm	Gray	<u>PDF</u>	
<u>BRM14-2</u>	\$21.00		(14) 5.0 to 11.0 mm	Black	<u>PDF</u>	
<u>BRM22-1</u>	\$21.00		(16) 3.0 to 6.5 mm (4) 5.0 to 9.2 mm (2) 8.0 to 12.5 mm	Gray	<u>PDF</u>	
<u>BRM22-2</u>	\$21.00		(16) 3.0 to 6.5 mm (4) 5.0 to 9.2 mm (2) 8.0 to 12.5 mm	Black	<u>PDF</u>	
<u>BRM23-1</u>	\$21.00		(23) 4.0 to 8.5 mm	Gray	<u>PDF</u>	
<u>BRM23-2</u>	\$21.00		(23) 4.0 to 8.5 mm	Black	<u>PDF</u>	
<u>BRM29-1</u>	\$21.00		(29) 4.0 to 7.0 mm	Gray	<u>PDF</u>	
<u>BRM29-2</u>	\$21.00		(29) 4.0 to 7.0 mm	Black	<u>PDF</u>	

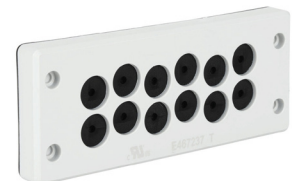
Note: Mounting hardware is included with frames. Screw size: M4x0,7x20 mm fitted with M3 Allen Head [0.40 Nm]



[BRM00-1](#)



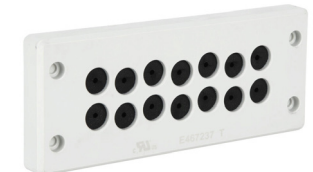
[BRM00-2](#)



[BRM12-1](#)



[BRM12-2](#)



[BRM14-1](#)



[BRM14-2](#)



[BRM22-1](#)



[BRM23-1](#)



[BRM29-1](#)



[BRM22-2](#)



[BRM23-2](#)



[BRM29-2](#)

Panel Mount Cable Strain Relief Plates ZL Series

Overview

The ZL strain relief plate may be used wherever the strain of cables, cords, wires, or conduits must be relieved or they are to be routed in a secure, easy and cost-effective way. Using this strain relief plate along with any standard cable tie provides a secure and reliable mounting of any cable, cord, wire, or hose.

Panel Mount Cable Strain Relief Plates - ZL Series			
Part Number	Price	Description	Drawing Link
566116	\$31.50	Murrplastik ZL series cable strain relief plate, polyamide, 60mm, black, holds (4) cable(s), panel mount. Package of 5.	PDF
566115	\$42.00	Murrplastik ZL series cable strain relief plate, polyamide, 80mm, black, holds (6) cable(s), panel mount. Package of 5.	PDF
566122	\$34.00	Murrplastik ZL series cable strain relief plate, polyamide, 121mm, black, holds (8) cable(s), panel mount. Package of 5.	PDF
566124	\$38.00	Murrplastik ZL series cable strain relief plate, polyamide, 140mm, black, holds (9) cable(s), panel mount. Package of 5.	PDF
566126	\$47.00	Murrplastik ZL series cable strain relief plate, polyamide, 180mm, black, holds (12) cable(s), panel mount. Package of 5.	PDF

Note: No UR approval

Features

- High stability
- Easy installation
- Polyamide 6.6
- Operating temperature: -40 to 125°C [-40 to 257°F]
- Panel mount
- Flammability: UL 94 V0



[566116](#)

EMC Discharge Plates ZL-AB Series

Overview

The discharge plate provides a means to discharge EMI (electromagnetic interference) that can occur on cable shields. The discharge plates can be used with the ZL series cable strain relief plates (ADC part numbers [566116](#) and [566124](#)) only and should be installed on the inside of the control cabinet, directly to a bonded surface. The discharge plate is made of high-quality 1.4310 (V2A) stainless steel. Using this strain relief plate along with any standard cable tie provides a secure and reliable mounting of any cable while maintaining a reliable grounding path for the shield of the cable.

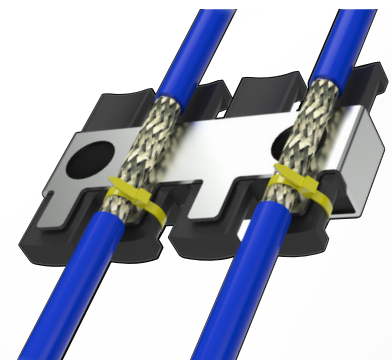
EMC Discharge Plates - ZL-AB Series				
Part Number	Price	Description	Requires Strain Relief	Drawing Link
571036	\$75.00	Murrplastik ZL-AB series discharge plate, stainless steel, 60mm, holds (4) cable(s). Package of 5.	566116	PDF
571046	\$87.00	Murrplastik ZL-AB series discharge plate, stainless steel, 140mm, holds (9) cable(s). Package of 5.	566124	PDF

Features

- High stability
- Easy installation
- Stainless steel
- Panel mount



[571046](#)





DIN Rail Mount Cable Strain Relief Plates KAF Series



Overview

The KAF strain relief plate may be used wherever the strain on cables, cords, wires or hoses must be strain relieved and routed in a secure, easy and cost effective way. The plate can be easily mounted to any standard 35mm DIN rail (ADC part number [DN-R35S1](#)). Installation is a simple snap-on process. No tools are required. Using this strain relief plate along with any standard cable tie provides a secure and reliable mounting of any cable, cord, wire, or hose.

Features

- High stability
- Easy installation
- Compact design
- Polyamide 6.6
- Operating temperature: -40 to 125°C [-40 to 257°F]
- 35mm DIN rail mount
- Flammability: V0

Din Rail Mount Cable Strain Relief Plates - KAF Series			
Part Number	Price	Description	Drawing Link
565510	\$10.00	Murrplastik KAF series cable strain relief plate, polyamide, 11mm, black, holds (1) cable(s), 35mm DIN rail mount. Package of 5.	PDF
565514	\$19.50	Murrplastik KAF series cable strain relief plate, polyamide, 75mm, black, holds (5) cable(s), 35mm DIN rail mount. Package of 5.	PDF
565518	\$26.50	Murrplastik KAF series cable strain relief plate, polyamide, 140mm, black, holds (9) cable(s), 35mm DIN rail mount. Package of 5.	PDF

Note: No UR approval



[565514](#)

