



## Tools and Test Equipment

Up-to-date price list:  
[www.automationdirect.com/pricelist](http://www.automationdirect.com/pricelist)

FREE Technical Support:  
[www.automationdirect.com/support](http://www.automationdirect.com/support)

FREE Videos:  
[www.automationdirect.com/videos](http://www.automationdirect.com/videos)

FREE Documentation:  
[www.automationdirect.com/documentation](http://www.automationdirect.com/documentation)

FREE CAD drawings:  
[www.automationdirect.com/cad](http://www.automationdirect.com/cad)



# The most reliable tools and testing equipment from top manufacturers at low prices

## Tools and Test Equipment

Tools and test equipment are used every day in industrial and commercial facilities to repair, install, and maintain industrial and commercial machinery, instruments, HVAC, and basically every component that keeps facilities running efficiently.

AutomationDirect provides the most commonly used tools and test equipment for industrial and commercial purposes. Our tools are designed with the strongest and most reliable materials, with user safety in mind, efficiency of the job provided, and to offer longevity for countless years of reliable service.

### Multimeters and Testers

Our professional-grade test equipment includes multimeters that provide quick and accurate measurement of AC/DC voltage, current, resistance, continuity, and more. These meters are top quality recognized meters, which also meet or exceed all UL testing standards for their category.

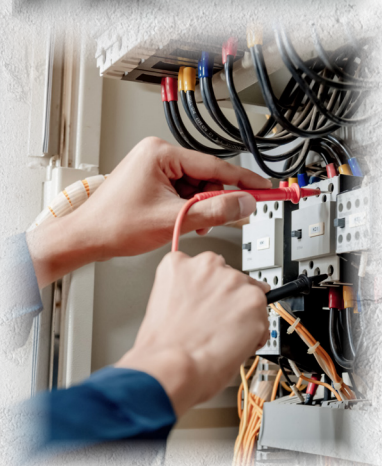
All test equipment is available for various measurement parameters with many features.

### Tools

AutomationDirect offers quality and reliable tools from well-known industrial professional-grade brands such as Wiha, Wera, and Southwire. These tools are used daily to help perform electrical wiring and mechanical installation tasks easily and reliably.

Our selection of quality tools include:

- Wide offering of screwdrivers including insulated, chisel, impact, and miniature styles
- Nutdrivers
- Hexdrivers
- Multi-Bit drivers, bits and adapters
- Torque screwdrivers
- Wrenches, ratchets and sockets
- Pliers, stripping and crimping tools
- Hole cutting tools
- Tool bags and cases
- Other tools and accessories such as fish tapes, cable tie tools, and knives

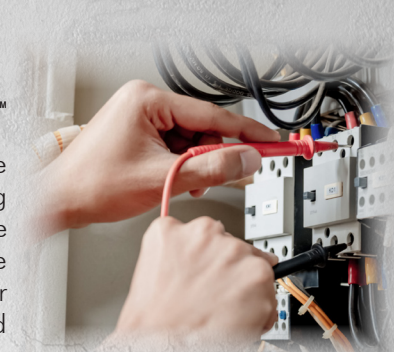


## Test Equipment

### Multimeters



AutomationDirect has several quality and affordable multimeter options from Southwire and our own Ardent brand. Southwire is known worldwide as one of the world's leading developers, manufacturers, and suppliers of building wire and utility cable, as well as the tools used in their installation. In addition to the Southwire collection, we also offer the Ardent brand which we introduced to provide even more cost/feature options for your testing needs. All of our meters are built to last and you can trust them for reliable and accurate readings time and time again.



### Digital Multimeters

These meters offer various measuring options/features and meet or exceed the UL's various testing equipment standards. Regardless if just testing for the presence of voltage, or troubleshooting the toughest problem, these meters will get it done!

- Up to CAT IV safety ratings
- Test for AC/DC voltage, current, resistance, continuity, capacitance, frequency, duty cycle or temperature
- Auto or manual ranging
- Models available with non-contact voltage detectors and built-in LED flashlight
- Models available with temperature function and include the thermocouple and adapter
- Ardent models feature an Automatic terminal Blocking System (ABS) to ensure proper lead connection
- All include batteries and test leads



### Clamp-On Multimeters

The Southwire True RMS AC/DC clamp-on meter measures AC and DC current up to 1000A, plus a host of other parameters. This meter has a UL listed safety rating of CAT IV 600V / CAT III 1000V.

- Auto or manual ranging
- Functions: AC/DC voltage, resistance, continuity, capacitance, frequency, duty cycle, temperature, and diode test
- Built-in non-contact AC voltage detector and flashlight
- Includes test leads, Type K temperature probe with banana plug adapter, carrying case, and 9 volt battery



Our Ardent clamp meters measure AC and DC current up to 1000A/400A, in addition to other parameters including temperature, frequency, resistance, and more. Ardent meters have a UL listed safety rating of CAT IV 600V / CAT III 1000V.

- Rotary clamp jaws allows the user to align the clamp in the orientation of bus bar/conductor while keeping the display and keys facing the user
- Comprehensive measurement: AC/DC voltage and current, capacitance, resistance, frequency, duty cycle, and temperature
- Power clamp meters also offer True RMS readings along with active, reactive, and apparent power measurements.
- Includes carrying case, normal tip probe set, alligator clip set, instruction manual, test certificate, and 9v battery

With rotating jaws for better alignment!



### Multimeter Accessories

Multimeter accessories provide additional convenience and replacement options for items such as test leads, alligator clips, temperature adapters, and fuses.



## Test Equipment (continued)

### Testers



Southwire voltage, continuity, and cable testers provide a quick, accurate way to detect and test voltage or continuity on wires and cables. Ardent clamp-on current probes accurately measure AC current without disrupting the conducting cable or bus bars and the insulation tester provides insulation resistance measurements plus much more.

### Clamp-on Current Probes

Ardent clamp-on probes save time and help keep personnel safe by allowing accurate AC current measurements without the need to disconnect the electrical connections. Features of available models include:

- Contact-protected connection plugs
- Broad range compatibility



### Voltage Testers

Is the circuit live or dead? Be positive before you start working on any circuit with these reliable Southwire voltage testers. Features of available models include:

- Green LED means power on, flashing red LED with beeper means voltage detected
- Low battery self-test
- Mode LED: green means high voltage mode, yellow means low voltage mode
- Bright LED flashlight
- Thinner probe tip for working with wall outlets
- On/Off power switch
- Pocket clip for easy storage



### Continuity and Cable Testers

These Southwire testers provide a simple way of checking continuity on wires and cables by indicating positive continuity and polarity. Models are also available to test continuity status for category-rated and coaxial cables. Some testers feature a detachable remote that allows cables and wires to be tested after installation.

## Test Equipment (continued)

### Sensor Tester

The sensor tester from AutomationDirect is used to save time by testing a sensor from spare stock or a newly installed sensor to determine if it will function properly.

- Fast field check of various sensor types
- LED and acoustic indicator
- Current supply to 100mA
- Rechargeable battery
- Universal micro-USB charger port



### ARDENT Insulation Tester

The Ardent insulation tester is designed for professionals who require precise insulation resistance measurement alongside comprehensive electrical testing capabilities.

- Automatic terminal Blocking System (ABS) prevents incorrect connections, plus blown fuse warning
- Ensures accurate readings for AC and mixed AC/DC signals, regardless of waveform distortion
- Backlit display, auto/manual ranging, Min/Max function, and continuity testing with an audible signal
- Measures up to 3GW with selectable test voltages of 50V to 1000V
- AC/DC current (via clip-on sensor) and voltage, plus frequency, resistance, and capacitance



### CONTRINEX PocketCodr

Southwire voltage, continuity, and cable testers provide a quick, accurate way to detect and test voltage or continuity on wires and cables. Ardent clamp-on current probes accurately measure AC current without disrupting the conducting cable or bus bars and the insulation tester provides insulation resistance measurements plus much more.

- Fast field check of various sensor types
- LED and acoustic indicator
- Current supply to 100mA
- Rechargeable battery
- Universal micro-USB charger port



# Tool & Tray Sets

## Wiha Premium Tool Sets

Wiha premium tool sets are engineered to cover a wide range of tasks with precision and ease, ensuring that no project is too challenging.

### Wiha 194-Piece Premium Tool Set in Rolling Tool Box

The Wiha 194-piece Premium Tool Set is designed to empower contractors and professionals with a comprehensive set of high-quality tools for all their needs.

- Custom molded MAX520TR rolling carry case for a practical job site solution
- Each tool has dedicated position for secure storage and organization
- Rigorous heat-treatment process for maximum tool strength
- Trolley and wheels for easy transportation
- Lockable watertight case for superior protection from elements, water, dust, and impacts when transporting your tools
- MAX520TR case with IP67, ATA300, and military certifications

### Wiha Electrician's Tool Sets

Stay protected on every job with these sets of professional-grade insulated tools, everything an electrician needs for everyday work. Each tool is individually tested to 10,000 volts AC and rated to 1,000 volts AC, providing maximum protection and peace of mind when working in live environments. Designed for durability, comfort, and safety compliance, these sets are built to perform when it matters most.

- 80-piece master electrician's insulated tools set in rolling hard case (WT32800)
  - » Equipped with an extensive array of must-have tools (cutters, pliers, wrenches, etc.) stored in removable insert trays for a complete tool, storage, and transport solution
- 50-piece master electrician's insulated tool set in canvas tool bag (WT32874)
  - » Premium insulated tool set with everything electricians need in a durable tool bag, including screwdrivers, nutdrivers, pliers, cutters, voltage detector, and more
- 59-piece master electrician's insulated tool set in heavy duty backpack (WT91872)
  - » Provides an extensive array of insulated screwdrivers, pliers, nutdrivers and more in a convenient backpack with a sophisticated storage system
- 16-piece insulated apprentice electrician's tool kit (WT32934)
  - » Includes all the common tools to get the job done including precision screwdrivers, a level, tape measure, wire strippers, and a hammer packaged inside an easy-to-carry belt pouch



WT32800



WT91872



WT32934

# Tool & Tray Sets

## Wiha Tray Sets

Wiha modular foam tray sets allow users to configure and expand their storage system to suit their workspace, whether in a toolbox, workshop, or on-site environment. Durable, lightweight, and visually organized, Wiha's modular foam trays help enhance productivity, protect valuable tools, and maintain a professional appearance.



1

Modular sizing options allow customization of tool drawers; small, medium, or large trays fit standard tool drawers

2

Tool outlines and printed labels on trays promote quick placement and retrieval reducing search time and enhances organization

3

Extensive tool types are available for purchase, including ratchets and sockets, standard and insulated screwdrivers, mallets, hex keys, T-handles, wrenches, and more

4

Laminated tri-layer foam construction ensures durability and structure across drawer use

## Wera Tool & Tray Sets

Wera foam tray sets are compact, with modular sizing and durable foam construction.



- Foam trays are water and oil repellant
  - Bright, color-coded tools ensure you can spot exactly what you need at a glance
- Wera's electrician set is specifically designed for electricians on the go.
- Extensive 73-piece tool set in the compact Wera 2go tool case
  - Increased efficiency with tools like the Zyklop Speed ratchet and Joker spanner



Wera maintenance sets are compact tool sets with the most important screwdriving tools for maintenance jobs both indoors and outdoors. The sets come in two variations, metric and imperial.

- Incredibly fast 1/4 inch Zyklop speed ratchet with pivoting ratchet head and 5 predefined locking positions
- Manual and power tool sockets (non-impact) with ball-stop groove and knurling at lower end for more grip
- Joker double open-end wrench with holding function, limit stop, small return angle, and extreme gripping teeth



WT32874

# Screwdriving Tools

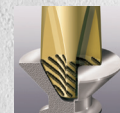
## Standard Screwdrivers

Wera and Wiha are world leaders in the manufacturing of screwdrivers, hex drivers and nutdrivers. Both are well-known for their attention to quality, ease of use, and a safety-friendly design. Accomplish any job without having to fight your own tools for a good grip or tight hold.

### Wera Kraftform Plus Standard Screwdrivers

Kraftform Plus standard screwdrivers are loaded with efficient features designed to transfer more torque with less effort, while providing safe and comfortable use with less physical stress, even during intensive use. Features include:

- A hexagonal design on the handle that helps prevent any rolling of the tool from the work surface
- A laser treated micro-rough surface on the blade tip of slotted and Phillips screwdrivers that literally bites into the head of the screw to provide less slipping, fewer scratches, higher torque transfer and less screwdriving effort
- Screwdrivers with the durable black point tip undergo a refined hardening process provides long service life and corrosion protection
- An ergonomic handle designed to fit snugly in your hand to protect from creating blisters and calluses, while also providing anti-slip zones for better grip
- Available in Phillips, slotted, hex, and Torx versions
- Also available in terminal block version in various sizes that makes it easy to push spring terminals and remain in the terminal block until removed, allowing hands to be free for easy wire connection installation
- Screwdriver sets with assortment of various sizes and screwdriver types are also available



Lasertip



### Wiha SoftFinish® Standard Screwdrivers

Wiha SoftFinish standard screwdrivers are premium-quality tools engineered for high-demand work in industrial and commercial environments. The SoftFinish handles feature an 8-edged large-diameter comfort surface that provides maximum grip, allowing the user to achieve powerful torque with less physical stress. Features include:

- SoftFinish cushion grip handle for comfort and control
- Exact fit precision machined tip for reduced cam-out
- Handle is sized proportionately to blade for consistent mechanical advantage
- Dual durometer construction for long-lasting durability
- Parallel flats on handle to prevent roll-off from work surface
- Handle molded directly on blade for permanent bond
- Phillips or slotted versions
- Screwdriver sets with assortment of various sizes and screwdriver types
- Sets also available with interchangeable blades



# Screwdriving Tools (continued)

## Insulated Screwdrivers

Insulated screwdrivers from Wera and Wiha are focused on quality and safety. Both are designed with ergonomic, safety and efficiency features that withstand the toughest industrial and commercial tasks.

### Wera Insulated Screwdrivers

Wera 100 VDE series insulated screwdrivers are focused on quality and safety, are designed with blades that exceed current standards with respect to hardness and torque strength, and are tested to guarantee safe operation up to 1,000 volts. Other features include:

- Hexagonal handle design to prevent rolling from the work surface
- Laser treated microrough surface on the blade tip literally bites into the head of the screw to provide less slipping, fewer scratches, higher torque transfer and less screwdriving effort
- Ergonomic handle design fits snugly in your hand to help prevent injury and provide anti-slip zones for better grip
- Available in Phillips and slotted versions
- Insulated screwdriver sets with assortment of various sizes and screwdriver types are also available (sets may include insulated pliers)

### Wera Turbo Insulated Screwdrivers

Wera's Kraftform turbo insulated screwdrivers allow a quadruplication of the speed when manually screwdriving (one turn of the handle = 4 turns of the shaft).

- Turn turbo feature on/off with the push of a button
- Robust, maintenance-free gearing

### Wiha Insulated Screwdrivers

Wiha SoftFinish insulated screwdrivers are premium-quality tools engineered for strength and durability and feature precision machined tips for reduced cam-out. These screwdrivers are VDE certified and meet EN/IEC requirements for protection against arc flash explosion. Features include:

- SoftFinish ergonomic cushion grip handle for comfort and control
- Handle is sized proportionately to blade for consistent mechanical advantage
- Parallel flats on handle to prevent roll-off from work surface
- Black oxide finish for corrosion protection
- Available in Phillips, slotted, or Torx versions and in sets

### Wiha Insulated Multi-Bit Screwdriver

Wiha PocketMax insulated multi-bit screwdriver is equipped with insulated SlimLine bits that have been tested to withstand 1,000 volts AC (1,500 volts DC) for safety and peace of mind. Features include:

- SoftFinish ergonomic cushion grip handle for comfort and control
- Dual durometer construction for long-lasting durability
- Magnetic easy-open top with SlimLine bits secured and stowed away
- Parallel flats on handle to prevent roll-off from work surface
- Bits include (2) Phillips, (2) slotted, and (1) square



## Screwdriving Tools (continued)

### Wera Chisel/Impact Screwdrivers



Wera Kraffform Plus 900 series chisel screwdrivers are designed with a solid hexagonal blade that goes through the handle and ends with an impact cap with an integral 1/4 inch square socket, which allows for serious chiselling jobs with a hammer, in addition to your everyday screwdriving tasks.

- Hexagonal bolster allows for a wrench to be used to apply extra torque
- Handle design to prevent rolling from the work surface
- Extra durable black tip treated through a refined process to guarantee long service life and increased corrosion protection
- Ergonomic handle design fits snugly in your hand to help prevent injury and provide anti-slip zones for better grip
- Available in Phillips and slotted versions, and a combined set



### Precision Screwdrivers

Precision screwdrivers are a smaller version screwdriver with smaller blades and designed to easily fit in your hand to provide stable and precise adjustments.

#### Wera Kraffform Micro Precision Screwdrivers



Wera Kraffform Micro precision screwdrivers consist of precision screwdrivers available in various slotted or Phillips tip sizes. Additional features for these screwdrivers include:

- Free spin cap and spinning zone that allow for the cap to be supported by a finger tip while turning the handle with the other fingers to easily spin the screwdriver with your fingers accelerating the screw driving process.
- Extra durable black tip treated through a refined process to guarantee long service life and increased corrosion protection
- Ergonomic handle design fits snugly in your hand to help prevent injury and provide anti-slip zones for better grip
- Kraffform Micro series is also available in sets with various tip styles and sizes



#### Wiha Precision Screwdrivers



Wiha precision screwdrivers are available in various slotted, Phillips, or hexagonal tip sizes. These screwdrivers have a rotating cap that facilitates precise turning and maintaining control with your finger tip. Additional features for these screwdrivers include:

- Cadmium-free tapered handle is directly molded on blade for a strong permanent bond
- Rotating cap provides comfortable and easy precise turning and control with fingertip
- High alloy chrome-vanadium-molybdenum (CVM) steel high-performance blades



## Screwdriving Tools (continued)

### Nutdrivers

Nutdrivers are screwdrivers with a specific sized socket end used to comfortably and easily tighten nuts and bolts.

#### Wera Nutdriver Sets



Wera nutdrivers have Kraffform Plus handles, have shafts made of chrome-plated steel, and are hollow to allow access to nuts on long screws. These nutdrivers are available in imperial (SAE) or metric sizes.

- Hexagonal handle design to prevent rolling from the work surface
- Ergonomic handle design fits snugly in your hand to help prevent injury and provide anti-slip zones for better grip
- Available in sets of 7 nutdrivers in metric or imperial sizes
- Hollow shaft allows nutdriving on long screws
- Chrome plated finish for corrosion resistance



#### Southwire Nutdriver Set



The Southwire nutdriver set includes a heavy-duty driver and a steel shank with bolsters for wrench assisted turning, plus a 6 imperial (SAE) bit sizes that include 3/16", 1/4", 5/16", 3/8", 7/16", and 9/16".

- Comfort grip handle provides extra comfort and maximum torque
- Color coded ends for quick identification of sizes
- Hollow shaft allows nutdriving on long screws
- Chrome plated finish for corrosion resistance



### Multi-Bit Drivers

#### Wiha SoftFinish® Multi-Bit Screwdrivers



Wiha SoftFinish multi-bit screwdrivers set the standard for premium quality professional multi-drivers, with features that make them a trusted companion for nearly any industrial or home driver application. Features include:

- SoftFinish cushion grip handles for comfort and easy control
- Directly molded dual durometer tapered handle material for a permanent bond provides grip and fast rotation with long lasting durability
- Premium quality tool steel for strength and durability
- Interchangeable chrome plated bit insert system
- Exact precision tips for reduced cam-out
- 77890 series 6-in-one multi-driver
  - » Includes reversible shaft with 2 nut driver profiles and various sizes of Phillips and slotted tips
- 77891 series 11-in-one multi-driver
  - » Includes reversible shaft with 2 nut driver profiles and various sizes of Phillips, slotted, square and Torx tips
- 77892 series 6-in-one multi-driver includes a conduit reamer
  - » Includes various sizes of Phillips, slotted, and nut driver tips
  - » Reams 1/2", 3/4", and 1" conduit for smooth edges and proper fit
  - » Reams both inside and outside edges for consistent efficiency
  - » Designed specifically for Electrical Metallic Tubing (EMT) conduit



## Screwdriving Tools (continued)

### Multi-Bit Drivers (continued)

#### Wiha SoftFinish® Drive-Loc Screwdrivers



Wiha SoftFinish Drive-Loc screwdrivers are some of the most versatile screwdrivers on the planet. The Drive-Loc system allows users to continuously adjust shaft length. Short or long, Drive-Loc is built for any application. The Drive-Loc system quickly locks in place in 1/8 inch increments, allowing for unprecedented flexibility. Features include:

- SoftFinish cushion grip handle for comfort and control
- Drive-Loc VI adjustable/reversible locking blades
- Blades made of high-performance CRM-72 tool steel
- 8-edged soft grip maximizes turn force for 40% more power
- Selectable lengths (1.7 inch – 4.8 inch) in 1/8 inch increments
- Tip profile labeled on cap for easy identification



#### Wera Kraftform Kompact Stubby Screwdriver



The Wera Stubby multi-bit screwdriver is a small, bitholding screwdriver with short bit mounting for hard-to-reach areas. The handle boasts a magazine for storing up to 6 bits. The bit holder has a strong permanent magnet, ensuring the bit is held secure.



## Screwdriving Tools (continued)

### Multi-Bit Drivers (continued)



#### Wera Telescoping Screwdrivers

The Wera telescoping multi-bit screwdriver is a handle/interchangeable blade system in a compact design. Each kit comes with a bit-holding handle, bayonet bit holder, and a convenient carrying case.



#### Wera Non-Ratcheting Screwdrivers

Wera's bitholding screwdriver with Rapidaptor quick-release chuck allows for lightning-fast bit changes without any extra tools. The Kraftform Plus handle allows for comfortable ergonomic screwdriving, preventing blisters and calluses. These tools are suitable for bits with 1/4 inch external hexagon drive.



#### Wera Small Ratcheting Screwdrivers

Wera's small ratcheting multi-bit screwdrivers are an extremely compact bitholding screwdriver designed for use with 1/4 inch drive bits. The ratchet mechanism with fine toothing is integrated in the handle (36 teeth/return angle 10°). This innovative function eases and accelerates screwdriving without having to reposition the tool, boasting three positions (clockwise/counter-clockwise/no ratcheting).



#### Wera Medium Ratcheting Screwdrivers

Wera's Rapidaptor ratcheting multi-bit screwdrivers are a feature-packed bitholding screwdriver built into a small footprint. The driver's Rapidaptor quick-release chuck allows lightning-fast bit changes without any extra tools. The ratchet mechanism with fine toothing is integrated in the handle (36 teeth/return angle 10°), which eases and accelerates screwdriving without having to reposition the tool. The mechanism supports three positions (clockwise/counter-clockwise/no ratcheting).



#### Wera Large Ratcheting Screwdrivers

Wera's large ratcheting multi-bit screwdriver is a high-quality bit holder that boasts a Kraftform ergonomic handle, Rapidaptor or magnetic quick release chuck, and fine tooth ratcheting function. The ratchet is built into the handle with an 8° return angle, switchover ring (right, locked, left), and a maximum torque of 50 Nm.



# Screwdriving Tools (continued)

## Multi-Bit Drivers (continued)

### Wiha SpeedE® II Electric Multi-Bit Screwdriver

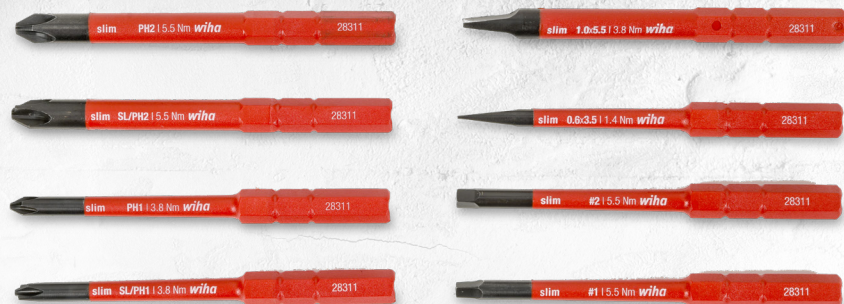
The Wiha insulated SpeedE® II electric screwdriver is faster, stronger, and more efficient than ever. The SpeedE® II now features two power levels, 0.4 Nm (3.5 in/lbs.) and 1.0 Nm (8.8 in/lbs.), for an improved range of performance. Upon reaching the torque capacity, simply continue turning fastener by hand using the built-in ratcheting function to reach the desired tightness. Using the manual ratchet feature reduces the risk of equipment damage from over-tightening. Change power levels by toggling a switch integrated into the form-fit handle that delivers comfort and control and features a ring light for low-light work environments. These screwdrivers are packaged with rechargeable lithium-ion batteries for driving up to 800 fasteners per charge; USB charger with plug adapter is included. Features include:

- Two power levels: 0.4 Nm (3.5 in/lbs.) and 1.0 Nm (8.8 in/lbs.) for improved range of performance
- Torque-ratcheting function for hand-finishing fasteners and damage prevention
- Integrated ring light for low-light work environments
- Rechargeable lithium-ion batteries for driving up to 800 fasteners per charge
- USB connection charger with plug adapter for versatile charging capabilities
- SlimLine Blades, 33% narrower insulation diameter than standard insulated tools
- ASTM F1505 standard specifications for insulated and insulating hand tools
- CSA testing benchmarks for safety and performance

*\*Only compatible with Wiha SlimLine Blades for optimal safety and function*



Integrated ring light



# Screwdriving Tools (continued)

## Multi-Bit Drivers (continued)

### MEGAPRO® Multi-Bit Screwdrivers

MEGAPRO custom loaded multi-bit screwdrivers are versatile and reliable tools designed to provide common or specialized service covering all types of industrial applications. Select the series that best serves your application and enjoy an easy-to-use tool with lifetime warranty.

- Industrial grade S2 steel bits perfect for any job
- Alloy steel shaft serves as 1/4" hex nut driver
- Retractable cartridge for easy bit access and storage
- Palm-saver technology improves use comfort
- EZ guide collar helps maintain full contact between the bit and the screw
- Ultra-strong Triax 1120 resin handle, an ABS-Nylon alloy
- Lifetime warranty for manufacturer's defects (does not cover normal wear and tear, product abuse, or product modification)



#### 151NAS ORIGINAL Series Screwdrivers

Commonly used for typical everyday tasks, this screwdriver includes (2) Phillips, (2) square, (2) Torx, and (1) flat double-ended S2 steel hex bits in various sizes.

#### 151ELEC ELECTRONIC Series Screwdrivers

Commonly used for all types of electronic industries, this screwdriver includes (2) Phillips, (1) square, (1) Torx, (1) flat, and (2) spanner double-ended S2 steel hex bits in various sizes.

#### 151HX HEX Series Screwdrivers

This screwdriver includes (7) double-ended S2 steel hex bits to provide 14 popular sizes.

#### 151AUTO AUTOMOTIVE Series Screwdrivers

Providing the most common bits used for any type of automotive application, this screwdriver includes (4) Torx, (1) Phillips, (1) flat/valve stem, and (1) 1/4" socket adapter double-ended S2 steel hex bits in various sizes.

#### 151SL44 SHAFTLOK Series Screwdrivers

SHAFTLOK series screwdrivers have a patented locking mechanism that holds the bit tight. This screwdriver includes (2) Torx, (2) Phillips, (1) flat, and (2) square double-ended S2 steel hex bits in various sizes.

#### 6EXT-SL6 SHAFTLOK Series Screwdriver Extension

This solid steel 6-inch shaft extension locks into the SHAFTLOK screwdrivers and can also be used in power drills; multiple extensions can be locked together for extra long reach.

#### 251PRECISION PRECISION Series Screwdrivers

This screwdriver has a patented retractable bit cartridge and a rubberized handle for extra comfort. This tool includes (2) hex, (1) pentalobe, (2) Phillips, (2) flat, (1) spanner/triangle, (2) Torx/Torx pin, (1) Torx/Phillips, (1) Torx pin double-ended S2 steel hex bits in various sizes.

#### 211R2C36RD RATCHETING Series Screwdrivers

This screwdriver provides a ratcheting action that allows quick tightening of screws. This tool includes (1) square, (2) Phillips, (1) flat, (2) Torx double-ended S2 steel hex bits in various sizes.



## Screwdriving Tools (continued)

### Hex, Torx™, and Service Keys

Hex and Torx tools are used to tighten or loosen hexagon (aka, Allen) or Torx socket head screws. These tools are designed to provide more contact surface inside the screw head, which provides efficient tightening and prevents rounding. Service keys are used to open or lock electrical and natural gas control cabinets, shut-off systems and other systems equipped with lock latches.

#### Bondhus L-Key Sets



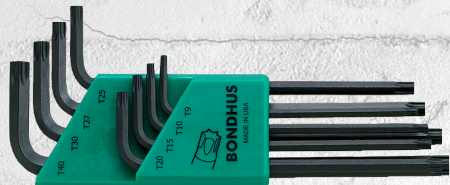
##### Hex L-Key Sets

Bondhus hex L-keys are no-frills tools that get the job done right. Chamfered tool tips eliminate burrs and help the tool seat properly, while sharp corners transfer more torque to the screw to reduce stripping. These hex L-keys are precision machined in the USA with Protanium® high-torque steel for maximum durability. Bondhus hex L-keys are offered in different lengths and are available in both metric and imperial sets. Tip types vary to include:

- Hex-end tip
- Ball-end tip
- Stubby ball-end tip
- Stubby double ball-end tip

##### Torx L-Key Sets

The only Torx tools made with Protanium steel, these L-keys are designed for more torque and twice the wear resistance of standard steel. The Torx tip is also designed to work on both Torx and Star screws. Bondhus Torx L-keys are made in the USA for people who want tools that are built to last.



#### Wera Hex-Plus Hex Keys



Wera Hex-Plus L-Keys hex keys are designed with narrow tolerance manufacturing techniques, careful material selection, and refined hardening technologies to deliver maximum safety at work.

- Hexagon ball tip design allows the hexdriver to swivel the axis of the tool to that of the screw to enable angled screw driving jobs where needed
- Available in metric and imperial sets that include various sizes
- Also available in metric and imperial sets with color coded covers for quick identification of sizes
- Sets include a snap-on holder, a two-component clip holder for the colored metric version, or a durable cloth pouch for the colored imperial version
- L-keys with BlackLaser surface treatment offer outstanding surface protection, long service life, and excellent corrosion protection



## Screwdriving Tools (continued)

### Hex, Torx™, and Service Keys (continued)



#### Wera Torx L-Key Sets

Wera Torx L-keys for Torx socket screws provide more contact surface inside the screw, which prevents rounding.

The six-point star shape allows for secure and efficient torque transmission, reduced cam-out (slipping of tool off screw head), lower risk of tool breakage due to the even distribution of stress between points, and better control and accuracy for precise adjustments.



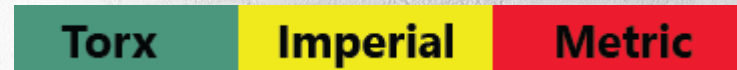
#### Bondhus Fold-Out Sets



Bondhus GorillaGrip® fold-out sets are compact, easy to use, and are built to handle a lot of torque.

##### Features

- Chamfered tool tips eliminate burrs and help tools seat in screws
- Corrosion-resistant ProGuard™ finish
- Speed-wrench feature
- Molded-in 90° stop
- Individual spacers between tools for easy tool selection
- Tools open from both the top and bottom
- Available in 3 styles:
  - Torx
  - Imperial
  - Metric



#### Wiha Fold-Out Hex Key Sets

Wiha PocketStar Fold-Out hex keys are compact tools featuring an engineered polymer handle casing that provides both durable storage and secure grip.

This tool's design eliminated the struggle of accessing the key you need with an innovative key extractor. Simply engage the push-button key extractor to lift the hex keys for easy access and selection. The CNC precision-machined tips are fit with a chamfered end for smooth fastener engagement.

- Engineered polymer handle casing for high-impact environments
- Hex keys fold into handle for compact storage
- Key sizes are identified on the handle for quick reference
- Innovative pushbutton key extractor eliminates the struggle to access keys
- Keys made from premium-quality tool steel and feature chrome-plated satin finish for corrosion protection
- CNC precision-machined tips for tight fit and reduced cam-out
- Available in metric set with 7 keys or imperial set with 9 keys
- Heat-treated for maximum durability



## Screwdriving Tools (continued)

### T-handle Sets

Wiha T-handle sets are designed to endure the harshest environments and applications. Handle shafts are permanently molded into the handle and have a vibration absorbing inner core. Sets come with either single or dual drive T-handles with handle types for any environment, including insulated, SoftGrip, and classic grip.

#### Insulated T-handle Sets

- Individually tested to 10,000 volts AC and rated to 1,000 volts AC for safety and peace of mind
- Handle molded on for maximum protection
- Wiha premium quality tool steel for strength and durability
- Black oxide finish for corrosion protection
- Exact fit precision machined tip for reduced cam out
- Meets EN/IEC 60900 testing standards for protection against arc flash explosion
- Meets ASTM F1505 standard specifications for insulated and insulating hand tools

#### SoftGrip Dual Drive T-handle Sets

- SoftGrip permanent molded-on handle with vibration-absorbing inner core for maximum working comfort
- Dual drive - long arm short arm drive
- Designed for maximum power and versatility
- Especially useful for loosening or tightening screws that are hard to move
- Ball End option enables fastening and unfastening at an angle of up to 25°

#### Classic Grip T-handle Sets

- Color-coded for Imperial and metric designations
- Wiha exclusive chrome-v-moly super tool steel
- Through hardened durability
- Anti-corrosion nickel finish
- Molded on Comfort Grip handle
- Ergonomically shaped for maximum power comfort



WT33490



WT54095



WT33492

## Screwdriving Tools (continued)

### Wing and Flag Handle Torx Key Sets

Wiha wing and flag handled Torx keys are built for high torque transfer with small screws. The flag handles have a molded flag and a top grip knob to allow for rapid spinning of the driver. The blades are made of premium quality tool steel for strength and durability, are through hardened for best wear resistance, and have a black coating for corrosion resistance. Wiha's exact-fit Torx tips eliminate excessive bit wobble for increased driver accuracy. The result is a highly stable engagement with the screw head and a reduction in fastener cam-out that can lead to injury or damage to finished materials.

#### Features

- TORX Plus wing/flag style handle with spinner top
- Exact fit machined tips
- Blades of high performance CRM 72 tool steel
- Handles are molded on for permanent bond
- Meets EN/IEC 60900 testing standards for protection against arc flash explosion
- Meets ASTM F1505 standard specifications for insulated and insulating hand tools



WT37090

Flag Handle TORX Driver Set



WT36590

Wing Handle TORX Driver Set

## Screwdriving Tools (continued)

### Bit Drivers, Bits and Adapters

Bits are designed for demanding applications in trade and many industries. Bits are used with bit drivers and adapters to transfer high torque loads while providing safe operation and extremely durable service.



### Wera Bit Drivers, Adapters, and Bit Sets

Wera driver, adapters, and bit sets provide various combinations of high quality driver bits designed for tough industrial jobs. Kits and drivers are available include:

#### Wera Kraffform Kompakt screwdriver with bit sets (8-pieces)

- One Kraffform Kompakt bit-holding bayonet screwdriver with 7 assorted bits that include (3) Phillips, (3) slotted, and (1) Rapidadaptor bit holder
- Unique telescopic blade that can be lowered into the handle provides easy-screwdriving action
- Telescopic blade can be removed from the handle to be used as a machine bit adapter
- Ergonomic handle design fits snugly in your hand to help prevent injury and provide anti-slip zones for better grip



#### Wera Kraffform Kompakt screwdriver with bit sets (52-pieces)

- One Kraffform Kompakt bit-holding screwdriver with 51 assorted bits that include Phillips, slotted, BiTorsion Pozidriv, Impaktor Pozidriv, BiTorsion Torx, Impaktor Torx, Hex-Plus bits, and a Rapidadaptor bit holder
- This set also includes a set of Hex-Plus L-key hex drivers and a durable cloth pouch
- BiTorsion bits designed for long service life
- Impaktor bits designed for extreme conditions
- Hex-Plus L-keys with ball-end hex on long arm
- Rapidaptor bit holder for quick, one-handed bit changes
- Ergonomic handle design fits snugly in your hand to help prevent injury and provide anti-slip zones for better grip



#### Wera Kraffform Micro ESD Driver with bit sets (20-pieces)

- Ideal for jobs working with electronic components that require no electrostatic discharge
- One Kraffform Kompakt Micro ESD bit-holding screwdriver with 19 assorted bits that include Phillips, slotted, Torx, Torx Plus, Hex-Plus, and five lobe bits
- This set also includes a durable cloth pouch
- More than satisfies the ESD standards
- Free spin cap and spinning zone that allow for the cap to be supported by a finger tip while turning the handle with the other fingers to easily spin the screwdriver with your fingers accelerating the screw driving process.
- Ergonomic handle design fits snugly in your hand to help prevent injury and provide anti-slip zones for better grip



## Screwdriving Tools (continued)

### Bit Drivers, Bits and Adapters (continued)

#### Wera Zyklop Pocket Set (18-pieces)

- One compact Zyklop ratchet with an integral bit magazine in handle that includes (2) Phillips, (2) Pozidriv, (4) torx, and (4) hex bits, plus (3) 3/8" sockets and a universal bit holder that mount on the included Zyklop pocket holster
- Zyklop ratchet's magnetic direct mount quickly converts to a bit ratchet screwdriver with a 1/4" bit mount
- Freely pivoting ratchet head with five pre-defined locking positions for easy angled screwdriving
- Fine tooth reversible ratchet for a low return angle
- Stainless steel universal holder with strong permanent magnet can be used as extension
- Available in metric or imperial sets



#### Wera Tool-Check PLUS Imperial (39-pieces)

- Versatile and convenient imperial set loaded with screwdriving options that include (1) Zyklop Mini 1/4" bit ratchet, (6) 1/4" sockets in various sizes, (1) bitholding screwdriver, (1) Rapidaptor universal bit holder, (1) bit to 1/4" socket adapter, and assorted bits that include (3) Phillips, (1) slotted, (6) torx, (5) torx with bore hole, (5) hex, and (3) square-plus bits
- Ideal for working in confined spaces
- Tough viscous bits for universal use
- Screwdriver has Kraffform Plus ergonomic handle design that fits snugly in your hand to help prevent injury and provide anti-slip zones for better grip
- Fine tooth reversible ratchet for a low return angle
- Ratchet head knurling design allows for quick thumb rotation when needed
- Strong durable materials and construction
- Rapidaptor bit holder for quick, one-handed bit changes



#### Wera Tool-Check PLUS Metric (39-pieces)

- Versatile and convenient metric set features the same benefits as the imperial version and is loaded with screwdriving options that include (1) Zyklop Mini 1/4" bit ratchet, (6) 1/4" sockets in various sizes, (1) bitholding screwdriver, (1) Rapidaptor universal bit holder, (1) bit to 1/4" socket adapter, and assorted bits that include (3) Phillips, (1) slotted, (6) torx, (5) tamperproof torx, (5) hex-plus, and (3) Pozidriv bits

#### Wera T-handle Bitholding Screwdriver/Ratchet

- Convenient to carry-on and use T-handle with a 1/4" external hex drive (model with Rapidaptor bit holder included available)
- Easy to set reversing lever for comfortable clockwise/counterclockwise direction change
- Ratchet mechanism fully embedded in handle for convenience in use
- Ergonomic two-component handle design with finger recesses and pleasant surface feel fits snugly in your hand for high power transmission and fatigue-free use
- Fast rotating sleeve for high working speeds
- Strong durable materials and construction
- Rapidaptor bit holder for quick, one-handed bit changes (included with part number 05023461001)



Build the perfect tool lineup with Wera's Tool-Check modular system—engineered to adapt to your workflow. Mix, match, and expand components to create a personalized, highly compact setup that evolves with your needs.

- Multiple tool options and combinations are available



## Screwdriving Tools (continued)

### Bit Drivers, Bits and Adapters (continued)

#### Wiha TerminatorBlue Impact Bits

Wiha TerminatorBlue bits are impact rated for power tools and rigorously heat-treated to produce a bit that will last 120 times the service life compared to standard bits. The specially designed torsion zone absorbs the impact energy, allowing a maximum unmatched torsion flex.

- TST™ Torsion Stabilizing Technology provides maximum flex and reduced tip stress
- CVM premium quality tool steel for strength and durability
- Exact fit precision machined Phillips tips reduce cam-out
- Fit with a standard 1/4 inch hex drive
- Various bit lengths available
- Impact-rated for power tool applications
- Phillips, slotted, Torx, Pozidriv, and square tips available in various sizes
- T-handle and TerminatorBlue quick-release driver bit adapter also available

#### Wiha Nut Setters

Wiha color-coded nut setters are designed with high-visibility color coding and laser-engraved size callouts for quick and easy identification. These nut setters offer a solid shaft that provides strength and durability for long-lasting repetitive use and are impact-rated for use with power tools.

- High-visibility color coding for quick size identification
- Imperial and metric versions available
- Industrial strength magnetic tip for secure fastener hold
- Impact rated to 700 in/lbs for maximum performance
- Exact fit precision machined tip for reduced cam-out
- Standard 1/4-inch hex drive for universal application
- Radiused corners prevent fastener head round-off
- Durable black oxide finish for corrosion protection
- Broached and clear-coated openings for added corrosion protection
- Cold forged from Chromium-molybdenum alloy steel (CrMo) for strength and durability

#### Wiha Go Box Impact Bit Set

Wiha Go Box is a ratchet and impact bit set provides dependable functionality and withstands tough jobs. This set features:

- 72-tooth ratchet with 5° arc swing for smooth ratcheting in tight spaces
- Ratchet includes a fast-action thumb lever for quick direction change
- Highly dependable pawl mechanism for slip or skip prevention
- Impact rated 1/4" locking bit holder
- TerminatorBlue Phillips, square, Torx, hex, and Pozidriv impact bits
- Compact hard case for easy storage and security

wiha



## Screwdriving Tools (continued)

### Wera Torque Screwdrivers

Wera torque tools allow smooth torque-controlled tightening to prevent damage to screws or work pieces, eliminating labor intensive drilling, re-tapping and production downtimes. Torque Screwdrivers available include:

#### Torque Screwdrivers

- Adjustable torque screwdrivers can be adjusted to the required torque by hand
- Easy to read torque scale
- A hexagonal design on the handle helps prevent any rolling of the tool from the work surface
- Torque ranges available from 2.5 in-lb to 55 in-lb depending on model
- Torque drivers available in straight or pistol grip handle versions
- A 27 piece set is available with an two straight and one pistol grip torque screwdrivers, (18) Torx bits, and (6) hex-plus bits
- Ergonomic handles designed to fit snugly in your hand

Wera



### Wera Kraftform Safe-Torque Screwdrivers

Wera

For professional screwdriving, fine adjustment, and torque-controlled screwdriving. Quick setting for five selectable clockwise/counterclockwise tightening torques (1.0; 1.5; 2.0; 2.5; 3.0 Nm) and one fixed position (Torque Lock). Quick-release holder for robust action. Features include:

- Easy torque setting
- Fixed position for unlimited tightening and loosening
- Secure slip-over torque function for clockwise/counterclockwise control
- For bits with 1/4 in external hex drive
- Also suitable for socket wrench inserts via adaptor

In-an-instant torque changes and several torque settings



## Wrenches, Ratchets and Socket Sets

### Wrenches

#### Channellock Adjustable Wrenches

A Channellock adjustable wrench delivers superior performance in daily use, thanks to its non-protruding jaws for tight-space access, a smart tapered handle for comfort, a precise four-thread knurl for grip, and a minimal head width for efficiency.

- Rugged chrome vanadium steel construction
- Chrome finish for ultimate rust prevention
- Extra-wide jaw adjustable wrenches available to accommodate a greater range of fastener sizes, especially in tight spaces
- Measurement scales are laser engraved for sizing nuts, pipe, and tube diameters

**CHANNEL LOCK**



#### Wera Joker Adjustable Combination Ratchet Wrenches

Wera Joker combination ratchet wrenches revolutionized the humble wrench with a 12-point open end that features a unique 6-point stop plate that enables easier turning of bolts and provides improved grip for loosening stubborn bolts.

- Designed for hexagonal nuts and bolts
- Automatic and continuous self-setting
- Ratcheting wrenches with a metal plate in the jaw provides unique holding function
- 30° return angle at open end avoids time consuming wrench flipping
- Ratchet mechanism has an exceptionally fine (80-tooth) mechanism for very tight work spaces
- Specially forged geometry for high torque transfer and strength
- Chrome molybdenum steel construction with nickel-chrome coating for corrosion protection

**Wera**



#### Wera Joker VDE Insulated Self-Adjusting Spanner Wrench

Wera Joker VDE insulated self-adjusting spanner wrenches make tightening and loosening of nuts and bolts easy, quick and efficient by providing the self-adjusting feature that simplifies setting the correct opening needed. The VDE insulated feature protects users from shock hazards for jobs up to 1K volts.

- Adjustable to provide automatic and continuous grip for all metric and imperial sizes
- Insulated handles are individually tested for safe use up to 1,000 volts and are designed with anti-slip protection and sliding function to ensure contactless and safe opening of the non-insulated jaws
- Ratcheting function allows for fast and consistent screwdriving without requiring wrench removal
- 30° return angle at open end avoids time consuming wrench flipping
- Single-arm design and ratchet feature allows use in confined spaces
- Available in a four-piece set with a convenient carrying pouch



## Wrenches, Ratchets and Socket Sets (continued)

### Ratchets and Sockets

#### Wera Ratchets and Socket Sets

**Wera**

Wera ratchets and socket sets are available for a variety of fastening tasks. These ratchets and sockets are corrosion-resistant and feature simple direction change mechanisms and small return angles for fast, precise work in small spaces. Series available include:

- Wera Bit-Check: 31-piece driver bit set with a Zyklop mini bit ratchet, 1/4 inch drive, and a range of slotted, Phillips, Hex-Plus, Square-Plus and Torx bits.
- Wera Tool-Check: 38-piece driver bit and socket set with a Zyklop mini bit ratchet, a 1/4 inch drive, and assorted bits and sockets.
- Wera Zyklop Metal: A forged chrome-molybdenum steel ratchet with a convenient direction change lever, a ball lock socket mechanism that holds sockets and attachments securely, designed to fit in tight areas.
- Wera Zyklop Mini: A ratchet designed for easy, flexible fastening using 1/4" bits and sockets. This ratchet features a compact design with a small 6° return angle, a thumbwheel for quick operation, and a switch lever for convenient direction change.
- Wera Zyklop Speed: This ratchet has Kraftform Plus handles that provide great grip and comfort, a swivel head that locks in 5 different degree positions, and a fine tooth ratchet design that allows operation in tight spaces with a travel as small as 5 degrees.

In addition to the sets mentioned above, Wera offers tool sets that include ratchets, sockets, bit drivers, bits, and ratcheted T-handles that provide much convenience and versatility to fit practically any application.

These tool sets include:

(please see previous Bit Drivers, Bits and Adapters section for additional details)

- Wera Zyklop pocket set (18-pieces)
- Wera Tool-Check PLUS imperial or metric (39-pieces)
- Wera T-handle bitholding screwdriver/ratchets

#### Wera Insulated Ratchets

Insulated ratchets allow safe tightening or loosening of fasteners without risking accidental contact with energized components.

- Rated to 1000V
- Slim design with an ergonomic grip
- Fine-toothed ratchet with 80 teeth for a short return angle of 4.5 degrees
- Switch lever is available for convenient and fast change of direction
- Ball lock ensures sockets and accessories fit securely, providing increased safety during operation



# Stripping and Crimping Tools

## Stripping Tools



### JOKARI Automatic Wire and Cable Strippers

JOKARI automatic wire strippers make wire stripping quick and easy with a simple squeeze of a trigger. These strippers automatically adjust to the correct gauge size of solid or flexible wires and quickly remove the insulation without damaging the conductors.

- Automatically adjust to wire gauge size (up to 6 AWG depending on model)
- Cuts round or flat cables (depending on model)
- Blade height adjustment available for different insulation materials (SECURA 2K)
- Adjustable strip length (various lengths depending on model)
- Easy-to-access integrated cutting blade on top of tool cuts up to 14 AWG (SECURA 2K)
- Ergonomic design requires much lower hand force
- Legend for cable sizes on body
- Soft grip zones integration ensures force transmission is easier on the user
- Blades are made of special hardened and tempered steel
- Models available include Standard, Super 4 Plus, SECURA 2K, Sensor Special, Sensor Mini, FKZ, and AS Interface Pro series



### JOKARI Cable Dismantling/Stripping Tools

JOKARI cable dismantlers/strippers are easy-to-use handheld compact cable strippers that quickly remove jacket material from all types of cables.

- Stripping of round cable sheathing of various dimensions (depending on model)
- Ergonomic design provides comfortable hand grip and ease of use
- No exposed blades
- Anti-slip thumb pad reduces hand fatigue (JT10160, JT10270 models)
- Special hardened and tempered steel titanium-nitride coated blade for long life
- Universal series (JT30120) requires no adjustment of cutting depth, SECURA series (JT30155) strips cables and wires without adjustment of cutting depth required
- System 4-70 series (JT7000) has interchangeable blades to adapt to many cable sizes; blades can be purchased individually or as a kit
- Legend for cable sizes on body



### JOKARI Data Communications Cable Strippers

JOKARI data communication cable strippers provide fast stripping of various communication cables including Cat5e, Cat6/6a, and others.

- Easy and convenient Ethernet cable stripper
- Cable capacities of 4.5 - 10 mm / 0.177" - 0.394"
- Models with retractable blade
- No cutting depth adjustment required
- Special hardened and tempered steel titanium-nitride coated blade for long life
- Model JT30161 can strip sheathing and shield foils
- Legend for cable sizes on body

# Stripping and Crimping Tools

## Stripping Tools (continued)

### AutomationDirect Wire and Cable Stripping Tools



Our wire cutting and stripping tools can handle 90% of wires by simply exchanging the easily interchangeable blades, available for a wide range of insulations.

- Widest stripping capacity of any tool of its type
- Pistol grip option (DN-WS-PG) provides stress free comfort
- Easily interchangeable stripping cassettes available for stripping a wide range of most modern insulation types, from PVC to PTFE; color coded by stripping blade type
- Precise adjustability strips various insulation thicknesses without damage to conductors
- Easy snag-free wire removal after stripping
- Cutting capacity: Stranded conductors to 8 AWG (10 mm<sup>2</sup>) / Solid conductors to 16 AWG (1.5 mm<sup>2</sup>)



### AutomationDirect Cable Dismantling Tools

Our heavy-duty or compact cable strippers are ideal for removing jacket material from all types of cables. The replaceable blades and ergonomic design make these tools ideal for preparing cables for connections and terminations.

- Cable stripping capacities of up to 1.57" with insulation thickness up to 0.177"
- Models tested for up to 100,000 cycles
- No exposed blades
- DN-CS-1 includes 2 hook sizes to accommodate multiple cable diameters
- DN-CST has a 9-position blade height adjustment wheel for fine adjustments and repeatability



### Southwire Wire Stripper

Southwire's low-cost, lightweight tools feature beveled cutting edges for clean cuts and easy stripping.

- Strips and cuts up to 10-20 AWG solid and 12-22 AWG stranded wire
- Double-dipped grip for comfortable fit
- Serrated nose holds cable for easy twisting and pulling
- Spring-loaded for self-opening action



### Channellock Wire Stripper

Forged for strength and durability right here in the U.S.A., Channellock stripping tools are built for use in both industrial and day-to-day applications.

- Strips and cuts up to 10-20 AWG solid and 12-22 AWG stranded wire
- Part number 908 crimps both insulated and non-insulated wire, cuts bolts without damaging threads, and has a lean nose ideally suited for pulling and looping wire
- Part number 968 features a curved shear to grip material during handling, a spring-loaded handle, and XLT XTREME Leverage technology that boosts performance and reduces hand fatigue



958

908

968

### Wiha Wire and Cable Stripping Tools

Wiha insulated industrial stripping pliers provide simple stripping of cables and strands of up to ø 5 mm/10 mm<sup>2</sup> conductor cross-section. These pliers are individually tested to DIN ISO 5745.

- Durable high-quality, chrome-plated plier surface prevents corrosion
- Opening spring reduces strain from continuous work
- Increases efficiency by allowing a wide variety of settings
- Each tool is individually tested and approved for 1,000 VAC
- Available in tool set that includes the insulated stripper and cutter combination



# Stripping and Crimping Tools

## Crimping Pliers and Dies

### Self-Adjusting Crimping Tools

Our self-adjusting ferrule and end sleeves crimping tools are lightweight, compact, comfortable and very easy to use.

- Ratchet (with emergency release) ensures crimps are according to specification
- Well-balanced and non-slip grip avoid slipping out of the hand
- Ergonomic handles with hardness and surface textures for comfortable frequent use
- Low handle force for larger ferrule sizes
- Compact and light-weight design for easy access within confined spaces
- Hole for attaching a safety strap
- Multiple crimp profiles available

### Fixed and Replaceable Die Crimping Tools

These crimping tools are designed for insulated and non-insulated wire ferrules.

- Versatile and easy to customize for right hand or left hand users
- Non-slip pad holds tool in place when leveraging on a work surface
- Full cycle crimp mechanism to ensure consistent, reliable crimp
- Oval crimp for insulated connectors with color coded connector reference (DN-CT-RBY)
- Models available with replaceable dies for insulated and non-insulated terminals, ferrules and assorted connectors

### Southwire Crimping Tool

Crimping tools are designed for insulated and non-insulated wire terminals.

- Specially hardened wire cutter in nose
- Tapered nose for working in confined spaces



# Pliers and Cutting Tools

## Classic Channellock Pliers



### Channellock Tongue and Groove Pliers

Channellock straight and GRIPLOCK® jaw tongue-and-groove pliers are made in the USA and forged from high-carbon U.S. steel that is specially coated for ultimate rust prevention. Features include:

- A strong, versatile grip for use in both directions
- Reliable PERMALOCK® fastener eliminates nut and bolt failure with increased joint strength
- Strong 90-degree, laser-hardened teeth for superior grip and longevity
- Patented SAFE-T-STOP® feature prevents finger pinch on GRIPLOCK models



### Channellock Long Nose & Slip Joint Pliers

Channellock long nose pliers offer exceptional grip and precision with a crosshatch tooth pattern and slim nose. Their precision-engineered knife and anvil cutting system, coupled with advanced laser heat treatment, guarantees sharp, durable cutting edges that outlast traditional hardening methods.

- Made in the USA and forged from high-carbon U.S. steel that is specially coated for ultimate rust prevention

Channellock slip joint pliers are versatile and easy to use. Features include:

- Two-position adjustment to accommodate various sizes
- Serrated jaw and pipe grip design for a firm grip
- Reliable PERMALOCK fastener that eliminates nut and bolt failure with increased joint strength



### Channellock Crimping Pliers

Channellock crimping pliers offer a sleek nose design that easily maneuvers into tight places to make the perfect crimp on both insulated and non-insulated solderless connections and terminals. Precise laser heat-treated cutting edges and durable high carbon steel make this one of the only crimper you'll ever need. Features include:

- CENTER CUT design aligns cutting edges in the center of the plier head providing additional leverage and overall performance
- 10-22 AWG crimping capacity



### Channellock Pliers Sets

Channellock tool sets offer the top-quality tools you need to get the job done. Whether on the job site or in the garage, Channellock tool sets can handle a wide range of tasks with precision and ease. Different sets are available to suit any application. General features include:

- Laser heat-treated teeth and cutting edges grip better and last longer
- High-carbon steel for superior performance on the job and specially coated for ultimate rust prevention
- Premium tool roll for convenient and secure storage



## Pliers and Cutting Tools (continued)

### Cutting Pliers

#### Channellock Diagonal Cutting Pliers

Channellock high leverage diagonal cutting pliers feature Xtreme Leverage Technology (XLT™) which makes cutting easier than ever. By positioning the rivet closer to the cutting edge, considerably less force is required to cut than other high leverage designs. Features include:

- Precision-machined knife and curved anvil style cutting edges to ensure perfect mating for superior performance and longevity
- High-carbon steel for superior performance on the job and specially coated for ultimate rust prevention

**CHANNEL LOCK**



### General Purpose Pliers

#### Wiha General Purpose Pliers

Wiha general purpose pliers are made of premium quality tool steel with jaws and cutting edges hardened by induction to provide superior sharpness and service life. Features include:

- SoftFinish ergonomic cushion grip handle for comfort and control
- Wiha's patented DynamicJoint provides 40% more gripping power resulting in reduced hand fatigue and ease of use
- Heavy-duty steel riveted joints withstand higher levels of loads
- Available in combination sets of various types of pliers and cutters
- Available pliers include long nose, combination, and tongue and groove

**wiha**



#### Wiha General Purpose Insulated Pliers

Wiha general purpose insulated pliers include the same quality features listed above, but with safety features and advantages of insulated versions, such as:

- Dual durometer construction for long-lasting durability
- Directly molded handles provide a permanent bond and feature a slip guard design for added protection at the front end and raised rear-finger steps for easy opening at the back-end
- Each tool is tested and rated for up to 1,000 VAC (1,500 VDC) for safety
- All Wiha insulated tools are VDE certified and meet EN/IEC, ASTM, NFPA, and CSA standards for electrical safety and performance
- Styles include long nose, combination, tongue and groove, long flat nose, and bent nose pliers

#### Wiha General Purpose Precision Pliers

Wiha general purpose precision pointed short nose pliers are constructed of premium quality tool steel with induction hardened jaws and cutting edges for superior sharpness and service. Features include:

- Soft Touch satin grips for maximum comfort
- Induction hardened precise cutting edges and jaws for superior sharpness and longevity, with black anti-glare finish
- Soft Touch tension return springs
- Premium quality tool steel for strength and durability



## Pliers and Cutting Tools (continued)

### Cutting Pliers and Cable Shears

#### Wiha Linesmans Pliers

Wiha linesman pliers are designed with deep cut radius conduit jaws for efficient non-slip gripping. Features include:

- 5-in-1 design provides functions such as cutting, crimping, gripping, tightening, or loosening
- Induction hardened blades for maximum durability
- Crimping jaw accepts most standard non-insulated electrical connectors
- Premium C70 special tool steel construction

**wiha**



#### Wiha Standard and Precision Diagonal Cutters

Wiha diagonal cutters electronic pliers have cutting edges designed for cutting soft to medium hardness wires. Their light weight design provides maximum comfort for production and other applications.

- Models available include standard and precision diagonal cutters, and a precision diagonal full flush cutter with wire trapping spring
- Extra narrow, short head for working restricted spaces
- C70 special tool steel construction



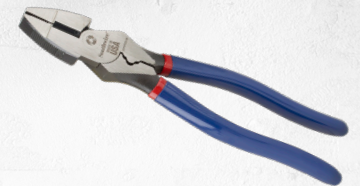
#### Southwire Cutting Pliers and Cable Shears

Southwire's pliers and cutters are made from American forged steel and use hot rivet technology, which make these tools capable of withstanding the wear-and-tear of the toughest jobs. In addition, these pliers include beveled cutting edges hardened with induction and comfortable handles for ease of use. Southwire cutting pliers and cable shears include:

**Southwire™**

#### Southwire Linesmans Pliers

- High-leverage design for maximum cutting power
- Induction hardened cutting blades ensure efficient and long lasting cutting surfaces for use with hard and soft wire
- Features a crimper, fish tape puller and reamer



#### Southwire Diagonal Cutters

- Provides efficient cuts for most hardened wire, ACSR, bolts, screws and nails
- High-leverage design provides maximum cutting power
- Angled head allows easy and comfortable use for confined spaces



#### Southwire Cable Shears

- Efficiently and easily cuts up to 4/0 AWG aluminium, 2/0 AWG copper, and 100-pair 24 AWG communications cable
- Induction hardened blades for maximum durability
- Dipped handles for comfort cutters



# Soldering Irons

## Wall Lenk Pencil and Gun Style Soldering Irons

Soldering is the process of joining different types of metals together to make a strong and permanent bond, mainly used for electrical connections and circuit boards. Our offering of joining products from Wall Lenk, a US based company manufacturing soldering equipment for over 50 years, includes top-quality pencil and gun style irons, with corded and cordless versions.



### Pencil Style Soldering Irons

Pencil style soldering irons are available in various watt ratings and include a 30-watt cordless USB rechargeable version. These soldering irons provide supreme versatility with replaceable tips to fit most soldering requirements, including a heat shrink tip for those hard-to-reach spots.

- 25W to 80W models
- Impact-resistant polycarbonate handles with durable stainless steel shafts
- Mica insulated nichrome heating element provides efficient heat transfer to tip for optimum temperature
- Pointed, chiselled, or fine point exchangeable/replaceable soldering tips
- Tool stand included
- Made in USA



### Gun Style Soldering Irons

Soldering guns are heavy-duty tools designed for challenging soldering jobs that require more demanding heating ranges of up to 400W. Soldering guns also offer the versatility of exchangeable/replaceable tip styles and are ideal for large working areas or where heat dissipation can be an issue.

- 100W model and up to 400W dual heat models
- Balanced tool design provides comfort, ease of use, and stability
- Fast heating tips ready in 12 seconds or 10 seconds for dual heat models
- Built-in spotlight illuminates work area (dual heat models)
- Large one-finger trigger switch for optimum heat control and comfort
- Dual heat models offer 3-position trigger control (off/low/high) that provides excellent tip heat control for precise soldering, cutting, or smoothing functions
- Impact-resistant polycarbonate handles with durable stainless steel shafts
- Mica insulated nichrome heating element provides efficient heat transfer to tip for optimum temperature
- Conical, bevel, knife, or pyramid (depending on gun model) quick exchangeable/replaceable soldering tips
- Made in USA



# Heat Guns

## Master Appliance Heat Guns



Heat guns are used extensively across various industries to facilitate tasks such as shrinking tubing, activating adhesives, bending plastics, thawing frozen pipes, and loosening bolts. Master Appliance heat gun products offer fixed or variable temperature ranges and attachments to suit any application. Their ability to deliver high temperatures quickly and efficiently makes them indispensable for jobs demanding localized heat.

### D-Series Fixed-Range Master Heat Guns

The D-series Master heat guns are heavy duty and industrial quality. A universal motor, reinforced mica-insulated ceramic heating element, and externally replaceable carbon brushes make for a rugged, reliable source of flameless heat whether you're working with freezer coils, plastic laminates, circuit boards, PVC, fiberglass, or heat-shrinkable materials.

- Temperature outputs available up to 1200°F
- Upgraded long-life universal motor delivers industry-leading run life
- High 27 CFM and 3400 FPM airflow gets the job done fast
- Quick-change plug-in heating element
- Optimized design for improved serviceability
- Sturdy die-cast aluminum housing will hold up in even the most demanding work environments
- Non-slip, reinforced stand offers stable 90-degree adjustability
- 6-ft power cord
- Spreader, heat shrink, and reducer attachments available; sold separately
- Designed and assembled in the USA



### Master Varitemp® Heat Guns

The Master Varitemp heat gun is a heavy-duty heat gun with a universal motor, die-cast aluminum housing, reinforced mica-insulated ceramic heating element and externally replaceable carbon brushes. This heat gun was designed with a variable temperature dial to boost versatility in hundreds of applications including bending plastics, curing adhesives, drying parts, heating parts, shrinking-tubing and packaging, stripping paint, and more.

- Variable temperature dial provides easy temperature adjustment from 130°F to 1200°F
- Long-life universal motor delivers industry-leading run life
- High 27 CFM and 3400 FPM airflow gets the job done fast
- Quick-change plug-in heating element
- Optimized design for improved serviceability
- Ergonomic soft grip handle maximizes user comfort
- Non-slip, reinforced stand offers stable 90-degree adjustability
- 6-ft power cord
- Spreader, heat shrink, and reducer attachments available; sold separately
- Designed and assembled in the USA



## Heat Guns (Continued)

### Master-Mite® Heat Gun

The Master-Mite heat gun is a continuous-duty benchtop heating system. This heat gun has a quiet, shaded pole motor and performs benchtop tasks without excess air flow. With the help of a height-adjustable stand, you can work with both hands free. Weighing in at only 28 ounces, this streamlined heat gun can also be hand held while performing vinyl repair or drying film without causing excess fatigue. This model is professionally preferred due to quiet operation and low power draw of the brushless motor.

- Complete system comes standard with 650°F heating element, adjustable heat gun stand, and heat shrink attachment
- Ideal heat and air flow (3.8 CFM), performs benchtop heating jobs without blowing components around work station
- Quiet-running motor reduces noise
- Adjustable heat gun is used to activate adhesive, cure epoxies, dry components, melt solder preforms, remove decals, shrink tubing, and more
- Heat shrink and pin point attachments available; sold separately
- 6-ft power cord

**MASTER**  
HEAT TOOLS FOR INDUSTRY™



### EC-Mini Heat Gun

The EC-Mini heat gun is for those seeking a professional grade heat tool with a small footprint. It is a lightweight, portable, and versatile heat source for a variety of projects ranging from heat-shrinking electrical connectors to decal removal. Whether you're in a panel shop or the garage, the EC-Mini heat gun is your reliable heat source to get the job done.

- Temperature output: 640°F
- Strong 9.9 CFM Airflow
- Extra long 6.5-foot power cord
- Impact-resistant plastic housing
- Built-in wire stand great for hands-free use
- Comes with heat shrink tube reflector
- Perfect tool for embossing, heat shrinking electrical connectors, crafts, candle making, decal removal, vinyl wrap and more!



## Cable Tie Tools, Knives, and Fish Tapes

### Cable Tie Tools

Cable tie tools ensure proper and clean installations.

- Cable tie gun: Used to tighten the cable tie easily and tightly
- Collar fastening tool: Used to tighten double-headed cable ties
- Cable tie cutting tool: Used to make a clean cut of the cable tie excess



### Knives

#### EDGEFORCE™ Hawk Bill Knife

- Premium D2 stainless steel holds an edge
- Curved blade for pull cuts and splicing
- Rugged metal handle
- Stonewash black oxide coated blade
- Liner lock keeps blade secure
- Comfort grip for maximum hold and comfort
- Reversible belt clip



#### Folding Utility Knife

- Quick open/close button for easy one-hand operation
- Durable metal body with comfort grip for secure hold
- Easy blade replacement
- Rugged metal handle
- Comfort grip for maximum hold and comfort
- Lanyard hole and belt clip



### Fish Tape

Southwire's SIMpull™ fish tape allows easy pulling of wire or cable through a filled or empty conduit up to 2 inches in diameter. The swiveling flexible metal leader and the polymer non-conductive tape makes the job SIMpull.

- Spiral extruded polymer design reduces the amount of effort required to push or pull the fish tape
- Swivelling flexible metal leader easily glides through bends
- Low-friction material reduces binding at joints, couplings, or 90-degree bends

**Southwire™**



# Hole Cutting Tools

## Drill Bits and Taps

Viking Drill & Tool specializes in producing high quality tools, focusing on design, engineering, and craftsmanship. Renowned for providing tools that meet stringent industry standards and specifications, Viking tools are built to support a wide range of applications and offer long-lasting durability.

### Split Point Step Drill Bits

Split point step drill bits offer precise, efficient drilling in thin materials, combining a dual-flute construction with self-centering tips for clean, accurate hole-making.

- 3-flat and quick release hex shank configurations
- Available in gold oxide or titanium nitride finishes
- Each bit includes a self-centering split point for quick starts without pilot holes
- Sold individually and in sets

### Combination Drill Bit & Machine Taps

Combination drill bit and machine taps are dual-function tools that drill and thread in a single operation, streamlining production and reducing setup time.

- 1/4 inch hex shank or a 3-flat shank offerings for compatibility with standard drivers
- Available in imperial or metric sizes
- Sold individually and in sets

### Drill Bits

Drill bits are designed to create precise holes in materials such as metal or plastic. Viking's high-quality drill bits ensure accurate sizing, clean finishes, and reduced wear on tools and materials. All drill bits come with either a 118° or 135° point angle to help reduce heat, minimize tool wear, and extend tool life.

- Jobber length drill bits are made from high-speed steel with a black or gold oxide finish, featuring a 135° split-point tip that facilitates faster drilling speeds by more efficiently removing material, especially in harder metals
- Mechanic length split point drill bits feature a 135° provide for accurate starts without the need for center punching are specially designed for handheld drills and impact tools
- Mechanic length step point drill bits feature a unique tip geometry and are ideal for enlarging existing holes without damaging the tip (sold individually and in imperial sets)
- Screw-machine-length bits provide accurate centering and fast penetration of thin metals
- Double-ended drill bits are designed for efficient penetration and reduced walking on contact, ideal for drilling holes on an enclosure backplate

### Taps

Machine taps support efficient chip removal and minimize thread damage.

- Precision-ground from high-speed steel (HSS) for strength, wear resistance, and smooth cutting performance
- Spiral point is specially designed for machine tapping through holes, ejecting chips forward to prevent clogging and reduce the risk of thread damage, particularly in production environments
- Available in imperial, numeric, and metric sizes, with UNF and UNC threads

Hand taps are essential for threading delicate materials where machine access is limited.

- Square shank provides strength and precise alignment
- Ideal for through-hole and blind-hole applications across manual and CNC machining tasks
- Available in imperial, numeric, and metric sizes, with UNF, UNC, and NPT threads

Taper pipe taps feature an interrupted thread design to reduce friction, increase chip space, and improve coolant flow during operation.

Ratcheting T-handle tap wrenches are also available and feature a three-position gear box, allowing forward, reverse, and locked operation for efficient ratcheting control.



# Hole Cutting Tools (continued)

## Hole Saws and Cutters

Hole saws/cutters are used to cut or punch holes in metals and plastic surfaces. These high-quality Morse tools cut quickly and cleanly for a variety of applications such as electrical, HVAC, and automotive.

### Bi-metal Hole Saws

General purpose bi-metal hole saws are capable of cutting steel, aluminum, wood, plastics, and more.

- Cuts holes with minimal material removal
- Patented tooth geometry and enhanced side slot allow for easier slug removal
- Solid cap reduces runout and vibration
- Sold individually and in sets

### Impact Hole Saws

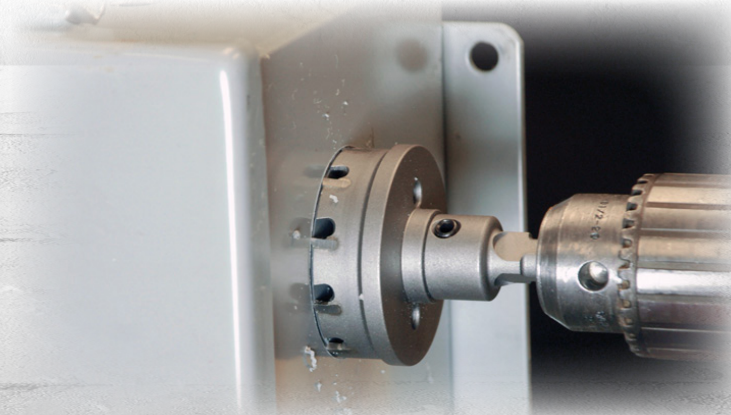
Impact-rated hole saws provide fast, clean cuts in sheet metal.

- Cuts holes with minimal material removal
- Equipped with spring technology for quick slug removal
- Shoulder cap prevents breakthrough
- 1/4 inch quick-change impact-rated shank boosts efficiency
- Sold individually and in sets

### Hole Cutters

Unlock superior cutting performance with heavy-duty carbide-tipped hole cutters. Crafted for clean, high-speed penetration in everything from sheet metal and stainless steel to pipe, conduit, aluminum, and composites, these tools are built to last. The hardness of carbide delivers an extended tool life, often outperforming bi-metal hole saws by up to 10 times in rigorous applications. Their aggressive tooth geometry combined with exceptional heat resistance of the carbide allows for faster cutting speeds and reduced wear, ensuring your investment goes further.

- Triple chip tooth for optimal precision
- Integrated ejector spring allows for quick slug removal
- A grooved tooth gullet directs chips away from the cut
- Sold individually and in sets



# Striking & Measuring Tools

## Mallets & Hammers



### Split Head Mallets

Wiha's split head mallets are crafted to deliver effective impact without damaging your workpieces.

- Each hickory handle is carefully crafted with a non-slip surface
- Heavy duty mallet housing
- Split head mallet sets from Wiha allow quick swaps between 5 different face materials



### Dead Blow Hammers

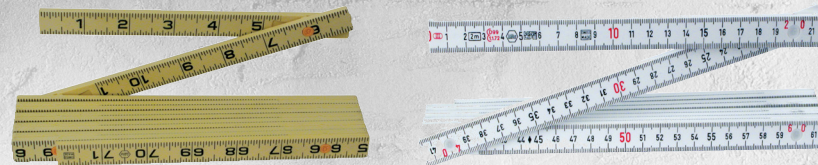
- All steel body for incredible durability
- Inexpensive replacement faces save you 10 to 90% over the life of a hammer
- Polyurethane faces are easy to replace, quick press fit, and won't unscrew or loosen while in use
- Anti vibration ergo cushion grips



## Folding Rulers

Wiha's MaxiFlex folding ruler is the heavy-duty ruler professionals need in their tool collection.

- Imperial and metric options with inside and outside read
- Rigid design for solid construction that won't snap or bend
- Lock-in-place stop-joints with stainless steel spring for 90 and 180-degree angles
- Waterproof material for protection against deterioration and deformation



## Calipers

Wiha calipers supports metric and imperial measuring systems

- Dial, Vernier, and digital options available
- Up to 6" measuring range
- Extremely lightweight
- Friction stop
- Inside, outside, and step measurement



## Tape Measure

- High visibility blade for better readability
- Rubber over-mold for a non-slip grip
- Easy to read double sided rule for precise measurement



# Tool Storage

## Tool Backpack



### Wiha Heavy Duty RedStripe Backpack

Wiha's heavy duty RedStripe backpack stands out as an essential companion for professionals who demand efficiency and organization in their daily lives.

- 77 storage and 30 flexible attachment options for your individual needs
- Tilt-resistant, waterproof hard-wearing base tray keeps the tools safe and dry
- Stable foothold which makes sure that the backpack has a firm stand, even when opened
- Quick access with 1/3 opening, you can take out tools without having to get it out of the trunk
- Sophisticated compartment system ensures clearly structured organization and easy removal of the tools
- Separate compartment allows the secure and clean storage of your laptop, cell phone and documents, separate from the tools
- Dimensions 15.25 in x 10.25 in x 21.00 in
- Light weight, only 8.30 lbs



### GT Line Backpacks



GT Line backpacks are designed to meet the needs of professionals who require organization and practicality at work.

- The Monolith backpack is loaded with technical features designed for intensive use, combining functionality, style, and comfort (MONOLITHLT35)
  - » 43 tool compartments
  - » Tilt-resistant waterproof base provides stable foothold to ensure that the backpack stands firm, even when opened
  - » Quick access with 90-degree opening, you can remove tools without having to get it from the trunk



MONOLITHLT35



Tilt-resistant Waterproof Base



Rear Compartment w/ Laptop Sleeve



Front Compartment w/ Internal Strap



TOP07R

- The Top 07 R is a compact and functional tool backpack, designed to provide comfort and organization in every work situation (TOP07R)
  - » Zip closures with padlock attachment for added security
  - » Removable tool pallet
  - » Internal laptop/document compartment

- The Top 07 XL R is a high-capacity yet compact backpack designed for technicians and field operators (TOP07XLR)
  - » High-strength fabric for a lightweight yet solid body
  - » Removable tool pallet
  - » Internal padded laptop/document compartment



TOP07XLR

- The Soft Trolley 01 R is a compact, multifunctional work trolley backpack designed for professionals constantly on the move (SOFTTROLLEY01R)
  - » 2-in-1 solution: can be used as a backpack or a trolley
  - » Removable tool pallet
  - » Integrated wheel cover to protect wheels when in backpack mode



SOFTTROLLEY01R

- The Tool Trolley 01 R is a work trolley backpack that combines the capacity of a tool case with the convenience of a backpack (TOOLTROLLEY01R)
  - » 2-in-1 solution: can be used as a backpack or a trolley
  - » Two removable tool pallets
  - » Backpack straps can be disconnected and stored in a zippered compartment when in trolley mode



TOOLTROLLEY01R

# Tool Storage

## Tool Bags

### Southwire Tool Bag



- Constructed from 2400d ballistic weave nylon
- Carry over shoulder or attach to a belt
- 11 inside and 5 outside tool storage pockets
- Side pocket with Flip Lid™ spill guard provides secure easy access for small items
- Electric tape strap
- Adjustable hammer/flashlight loop
- Two rubber feet keep it stable when setting on a flat surface



### Wiha Canvas Tool Bags



- Cordura canvas
- 1 gate-mouth main compartment, interior pockets, and exterior pockets to store and organize a wide variety of Wiha quality tools and accessories
- Robust YKK zipper assembly
- Molded composite reinforced base
- 1-1/2" shoulder strap with shoulder pad
- Durable nylon carry handles with Velcro closure
- 4 interior pockets on each side



### GT Line PSS Compact Tool Bag



The PSS Compact Bag is the ideal tool bag for electricians, technicians, and maintenance workers seeking a compact yet highly functional solution. It features the PSS (Panel System Solution) with two removable tool panels for quick and organized tool access.

- 16-liter capacity
- Max load: 10 kg (22 lb)
- Weight: 4.00 kg (8.82 lb)
- Two removable component boxes for safe storage of small accessories
- High-strength, water-resistant fabric for a lightweight yet solid body
- Tool compartment with internal pockets and elastic bands
- Adjustable ultra-comfort shoulder strap

\*Tools not included



### GT Line Soft Pilot R Tool & Laptop Bag

The Soft Pilot R is a compact, multipurpose professional tool bag designed for modern technicians who need to carry tools, electronic devices, and accessories in an organized and secure way.

- Weight: 2.10 kg (4.63 lb)
- Both horizontal and vertical tool access
- Main compartment to accommodate a laptop up to 15.6"
- Front and back compartment for tool storage with pouches and elastic loops
- Detachable front compartment, convertible into a practical carrying tool bag
- External pockets on both sides
- Dimensions: 16.50 x 8 x 14.00in

\*Tools not included



# Tool Storage

## Tool Pouches, Belts, & Rolls



### Wiha Tool Pouches

Wiha tool pouches are designed to hold tools securely and keep them organized

- Crafted of rugged polyester or Cordura canvas for long-lasting durability
- Models with multiple compartments for orderly tool storage
- Zipper bag, tool pouch, and belt pouch options available

\*Tools not included



### GT Line Tool Rolls



GT Line tool rolls neatly carry screwdrivers, pliers, wrenches, and tools of various sizes. These rolls are lightweight and ideally suited for on-the-go professionals seeking efficient, compact organization.

- Tool rolls are available with 12, 15, or 20 tool pockets to carry tools of various shapes and sizes
- Once rolled up, the tool roll's footprint is minimal — perfect to fit inside a tool bag, tool backpack, suitcase, or professional case
- High-strength, light-weight fabric
- Large surface for complete view of all tools

\*Tools not included



### GT Line Tool Belts and Pouches

GT Line tool belts are designed for professionals who need everything within reach while maintaining agility and comfort during work. Purchase a belt already equipped with multiple sewn pockets in various sizes, a hammer or mallet holder, and a tape measure clip, or build a custom configuration with the Top Belt R base and modular pouches.

- Fixed tool belt system (TOPTOOLBELTR)
  - » Tape measure hook, hammer loop, and smart tool storage
  - » High-strength, water-resistant fabric for a lightweight yet solid body
- Customizable modular tool belt and pouch system
  1. Top belt R base
  2. TOPELECTRAR for hand tools
  3. TOPNAILR for fasteners
  4. TOPTAPEPLUSR for measuring tools

\*Tools not included



TOPTOOLBELTR

