

AUTOMATIONDIRECT.com

www.automationdirect.com
Available in the U.S. and Canada only

BUY ONLINE

Order Today, Ships Today

money-back
30 day
guarantee

FREE Technical Support

Located in USA

Software

Up-to-date price list:
www.automationdirect.com/pricelist

FREE Technical Support:
www.automationdirect.com/support

FREE Videos:
www.automationdirect.com/videos

FREE Documentation:
www.automationdirect.com/documentation

FREE CAD drawings:
www.automationdirect.com/cad

DirectSOFT⁶

CLICK[®]
Koyo

Do more[!]
DESIGNER

Productivity[®] Series

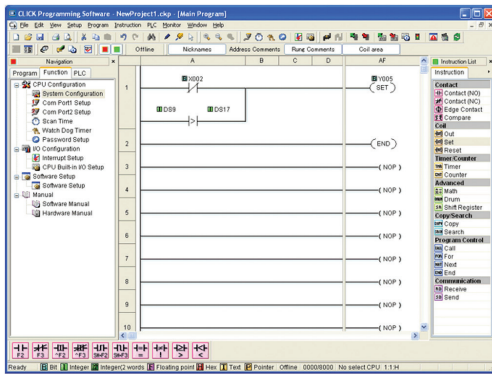
Productivity Suite Programming Software - Version 1.1.3 (3) [No Name]

DirectSOFT 6 Programming - UNTITLED - [Ladder View]

CLICK Programming Software - NewProject1.cbp [Main Program]

Software mSTW-1

Choose Your (programming) Weapon!



CLICK for simple programming, FREE!

CLICK micro-brick PLCs with stackable discrete and analog modules and free programming software are the lowest cost and easiest-to-use high-quality machine controllers on the market today. It is designed for first-time PLC customers as well as experienced users.

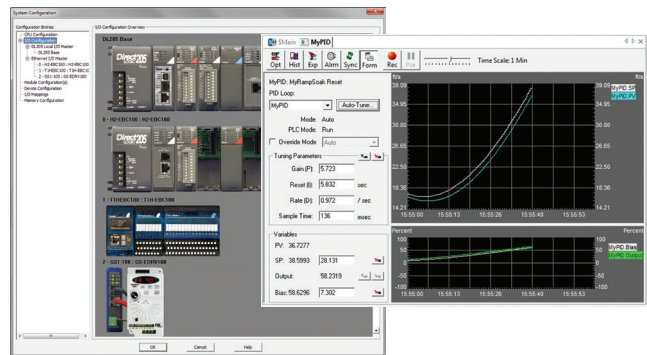
The free CLICK PLC programming tool simplifies the programming process to make it easier to learn, faster to program, and capable of completing most of your simpler application needs with only 21 instructions!

For more details on CLICK PLC software, see the [Click PLC Section](#)

Do-more with intuitive software (yes, FREE!)

The Do-more Designer software supports our newest generation of micro PLCs, the Do-more family. We listened to you to create a powerful, easy-to-use programming environment with all the features you expect - mix of ladder logic, program block and stage that simplifies code, support for 2,000 PID loops, spreadsheet-style math, efficient data typing, true bumpless run-time editing, and even a full program simulator built in.

For more details on Do-more software, see the [Do-more Overview Section](#)



ProductivitySuite offers advanced tools that make your life easier (still ...FREE!)

A powerful controller needs a powerful programming package. With Productivity Suite for the Productivity series of Automation Controllers, we've created advanced yet transparent processes in the programming environment to reduce your development time.

Timesavers include combined ladder logic and function block programming; tag name database for easier documentation; task management that minimizes scan time; advanced instructions that simplify complex tasks, and an exhaustive HELP file that covers both hardware and software topics.

Run-time editing, hot-swappable I/O modules and onboard program documentation help you commission and troubleshoot your system more quickly and conveniently. ProductivitySuite is available FREE as an online download.

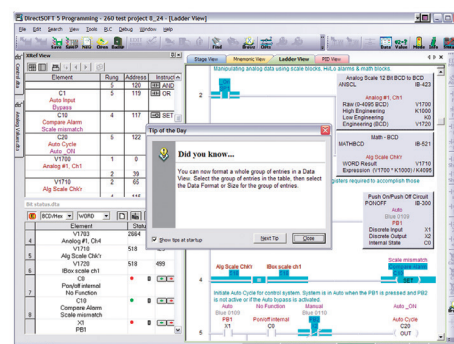
For more details on Productivity Suite, see the [Productivity3000](#), [Productivity2000](#), or [Productivity1000](#) Sections

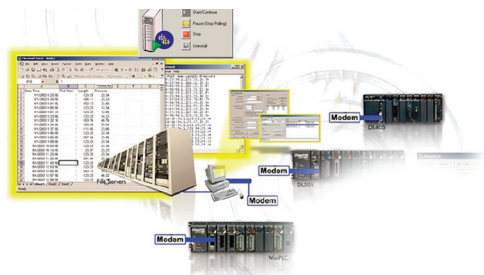
DirectSOFT6 Programming Software for DirectLOGIC PLCs

DirectSOFT6 (PC-DSOFT6 \$395.00 is our full-featured 32-bit Windows®-based programming software for the entire DirectLOGIC PLC family. This includes all DL05, DL06, DL105, DL205, DL305 and DL405 PLC product families.

The FREE version of DirectSOFT6 (PC-DS100), available for download from our Web site, allows you to program and download a project size of up to 100 words.

For more details on DirectSOFT6, see the [DirectLogic Overview Section](#)





Easy Data Acquisition & Design



DataWorx™: Connect Ethernet-enabled controllers for data collection

DataWorx easily connects your Ethernet-enabled DirectLOGIC PLCs, Think & Do v8.0 or Live! WinPLC controllers to standalone PCs or network servers for simple data logging. Collect data without the need for special PC programming or any 3rd party HMI, SCADA, or DAQ software application.

DataWorx™ is discontinued.
The software is now available directly from the vendor at:
<http://www.bizwaredirect.com/>

Should I use DataWorx or KEPServerEX?

DataWorx is for simple data logging. The PLC pushes data to DataWorx, DataWorx records the data to a file on the PC. If you just need to log your PLC variables to a file, this is the easiest way. It puts the controller in full control of database activities.

KEPDirect is an OPC server for AutomationDirect PLCs. What you connect on the other side of the server is up to you, the possibilities are wide open. The OPC client you choose controls when data moves to or from the PAC/PLC.

KEPDirect OPC Server for easy data acquisition or control

KEPDirect OPC Server connects your favorite Windows client software to AutomationDirect I/O through our EBCs (Ethernet Base Controllers), to our DirectLOGIC PLCs through ECOM modules or serial ports, or the Productivity series Ethernet connectivity.

Any industrial HMI, SCADA, data historian, MES or ERP software package that includes an OPC client interface (most do) can connect to our PLC hardware for cost-effective data acquisition or control. You can even use Visual Basic® to create data logging or simple HMI screens. (Requires OPC DA Client Tool Kit to use OPC with Visual Basic.)



PC Control with Think & Do

Think & Do Version 8 software products, America's leading PC control software, bring you all the tools you need to easily handle complex applications. With intuitive flowcharting, powerful graphics tools, higher math functions and data types, serial and Ethernet communications and interfaces to specialty control modules, Think & Do software is right for applications that PLCs just can't handle alone. Think & Do Version 8: Advanced PC-based control with enhanced HMI development software and an SQL interface for more complex applications.

ADC will no longer be selling the KEPDirect software. As a replacement KEPServerEX may be purchased from Kepware and will support any existing applications. It is recommended if you have a new application, you use KEPServerEX. ADC will continue to support license resets for a period of 1 year from 7/22/2019.

PC Control: The Smart Way to a Complete Solution

Why should I use PC control?

PLCs provide a great solution for many applications, but when your application goes beyond straight-forward ladder logic controlling simple I/O, PC control can be the smarter way to go.

When you have a PLC system that includes an HMI with motion control and/or a vision system, you not only spend time developing and debugging each system independently, you also have to spend significant effort integrating the separate controllers. The result is often difficult to support. Even small changes require editing multiple databases and complex debugging. Add coprocessor modules for communications, complex math algorithms or string/array data manipulation and you start to wonder why there isn't an easier way.

Well, there is, and it's called Think & Do PC Control. Think & Do, America's leading PC control software, brings you all the tools you need to easily handle complex applications.



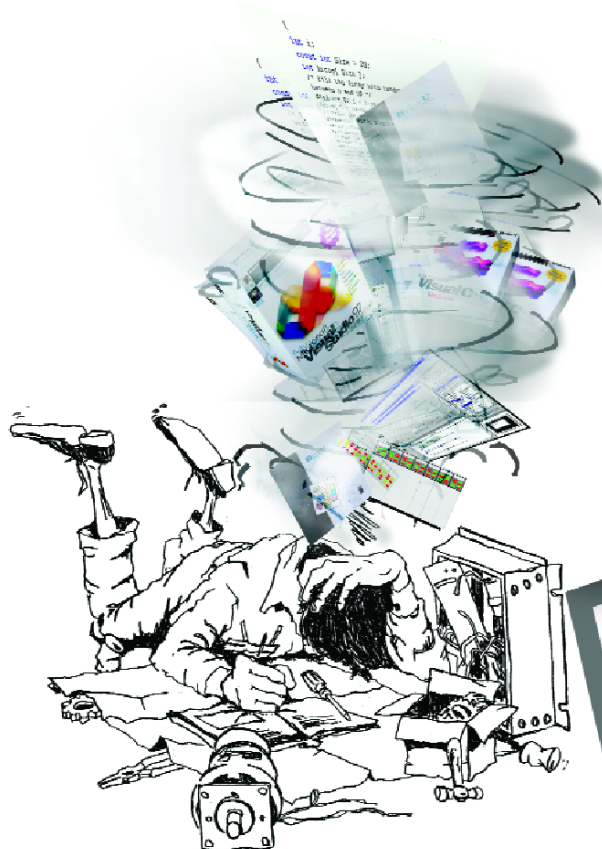
If your application requires:

- HMI as well as control
- Advanced data manipulation (even string arrays) and advanced math functions
- Data exchange with business applications (from spreadsheets to ERP systems)
- One or more third-party PC cards, such as those for motion control or vision systems
- Communication with serial or networked field devices
- Storage or access to large amounts of data
- Large number of PID loops (up to 64)
- Open architecture for C/C++ or VisualBasic

It requires Think & Do PC Control!

Why is Think & Do PC control so much easier?

With Think & Do, your HMI and control share the same database, so there is no duplication. Intuitive flowcharting makes coding the control logic as easy as sketching out the control algorithm. The powerful graphics tools and readily-accessible data tags enable you to create a quality HMI so fast you'll have to experience it to truly believe it. Think & Do includes the math functions and data types found in high-level programming languages, so complex algorithms and data management are a snap. PC architecture allows Think & Do to seamlessly support a variety of specialty motion, vision systems, and field network interface PC cards. The PC and Windows allow Think & Do to provide simple communication links on serial or Ethernet networks. Think & Do simplifies connecting everything from SQL databases to barcode readers with your control application.



VS.

**If you say
PCs can't do
control, you
haven't tried
Think & Do
PC control.**

PC Control Solutions Using Think & Do



Think & Do 8.0

PC-TD8-USB \$2,170.00

Keyless Development and USB Runtime key; non-keyed environment provides free WinPLC programming.

PC-TD8-WEB4-USB \$2,565.00

Full development package plus four concurrent runtime sessions with USB key; Web viewing capability

ESS-BASIC \$230.00

Extended service and support;
Basic 1 year

ESS-PREMIUM \$802.00

Extended service and support;
Premium 1 year



Includes:

- Flowchart logic
- Superior HMI features
- Easy SQL interface
- Web view capable (requires web view version)
- Importing screens
- Integrated serial communication
- Modbus TCP, Modbus RTU and Modbus Plus support
- Integrated motion control
- Integrated vision control
- PID process control (64 loops)
- Powerful debugging tools
- Offline logic testing
- Common database for HMI, logic and motion

Choose Think & Do 8.0 when you need

1. to communicate to an SQL database
2. a superior HMI with animation and advanced graphics

Think & Do 8.0 Overview



Think & Do™ Version 8.0 (PC-TD8-USB) is an integrated control environment that lets you do more with a given PC platform. It supports development, deployment and operation of high-value automated control systems for material handling and manufacturing. Think & Do 8.0 provides an intuitive, open-architecture environment that readily integrates with hardware and software components from virtually all major suppliers.

Projects created with Think & Do 8.0 integrate seamlessly with enterprise information systems to provide valuable data about system operation. Major components of Think & Do 8.0 are:

- **ProjectCenter:** Provides ready access to all project elements and the fully integrated tagname database using the Data Item Explorer.
- **FlowView:** For creating control logic.
- **ScreenView:** For creating HMI screens.
- **I/O View:** For configuring project I/O.
- **AppTracker:** For fast, graphical debugging.
- **Runtime Engine:** Provides a robust, deterministic project execution environment.

Think & Do 8.0 makes it easy to target your project to the Microsoft Windows platform that best suits your needs. Whether you create a project for a Certified PC or CE, scaling for a different platform requires only minor adjustment. There are four USB key versions available, so selecting the

product that best meets your needs is easy. There are two USB key development packages, one with and one without Web viewing capabilities.

Extended Software Service and Support (ESS) Products

We offer two extended support products, a basic package and a premium package. The basic ESS package, **ESS-BASIC** (\$230.00), is a one-year subscription and includes:

- 8 AM to 5 PM EST telephone support directly from Phoenix Contact
- E-mail support
- USB-Parallel key swaps
- Defective or damaged key replacements
- Software maintenance updates

The premium ESS package, **ESS-PREMIUM** (\$802.00), is also a one-year subscription. It contains everything in the basic package, plus:

- Webex training seminars
- A 50% discount on training seats
- Major software platform updates
- Upgrade from Think & Do Live! version 5.x to Think & Do 8.0 plus hardware key
- Or an upgrade from Think & Do Studio version 7.x via a hardware key field upgrade or replacement.

Note: ESS products cannot be purchased online. The order must be phoned in (800-633-0405) and a valid software serial number is required.

Conversion from Think & Do Studio and Live!

Studio: Flowcharts developed in Studio can be converted to Think & Do 8.0, but HMI screens cannot be converted.

Live! Flowcharts and HMI screens developed in Live! cannot be converted to Think & Do 8.0.

Think & Do 8.0

PC-TD8-USB \$2,170.00

Includes keyless development and USB runtime key. Use to develop or modify a Think & Do v8 project on a PC. Non-keyed environment provides free WinPLC programming.

PC-TD8-WEB4-USB \$2,565.00

Full development package plus four concurrent runtime sessions with USB key; Web viewing capability

Demo Mode

To see if Think & Do 8.0 is right for you, you can install and use it for up to 40 hours within a 30-day time period at no cost.

System requirements

Development System or Windows Runtime Target

Windows 2000, XP (32-bit), Vista (32-bit) or Windows 7 (32-bit),
Pentium IV compatible processor
256 MB RAM (512 MB or higher recommended),
750 MB available hard disk space,
CD-ROM drive,
64 MB or higher video adapter,
Color monitor (min resolution 800x600),
Ethernet adapter

Training

Phoenix Contact offers training courses led by certified Phoenix Contact Solution Providers at their headquarters in Ann Arbor, MI.

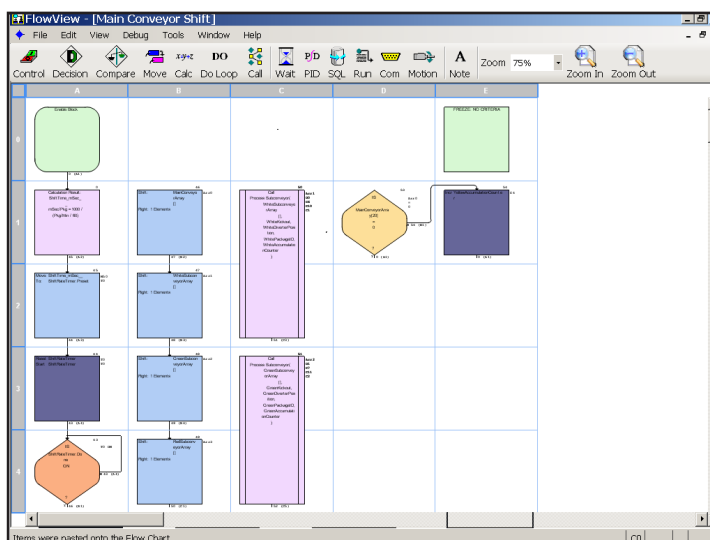
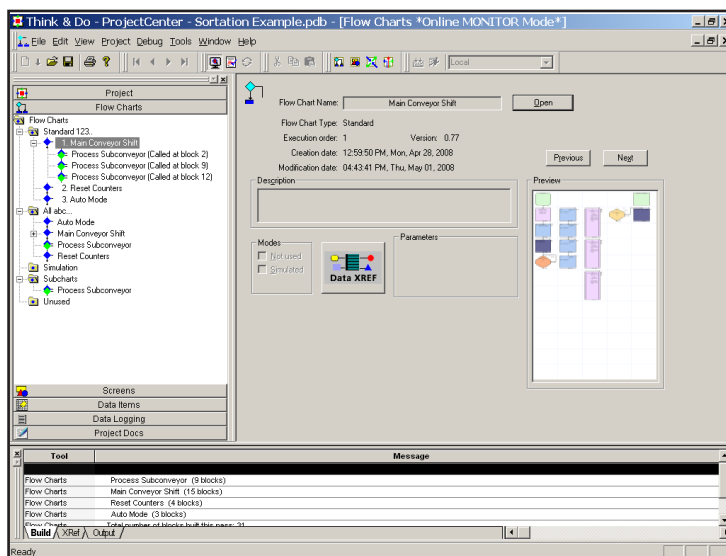
Check **www.phoenixcon.com/software** for training dates. Training is half price for subscribers to Premium **Extended Service** and **Support**, ESS-PREMIUM.

Think & Do 8.0 Overview

Features

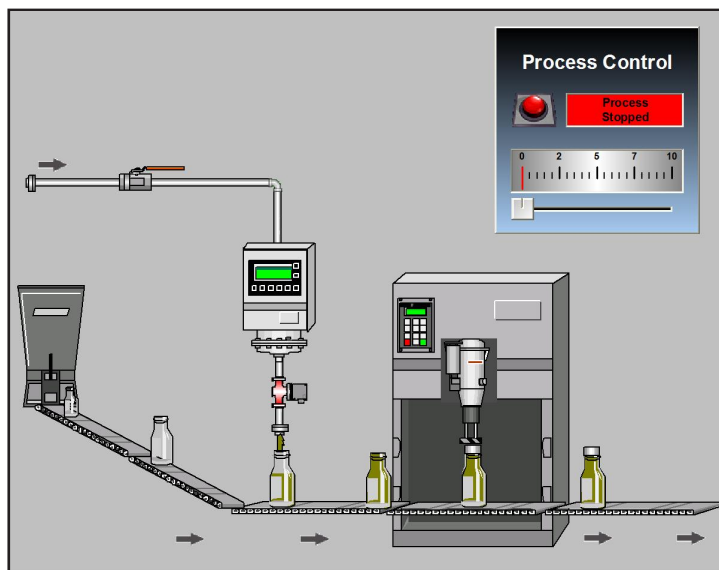
ProjectCenter for creating your project

ProjectCenter is the starting point for developing your project and provides access to all Think & Do development tools, such as menus, project information and runtime settings. It provides ready access to all project elements and the fully integrated tagname database.



ScreenView for creating and editing HMI screens

The most dramatic improvement in this revision of Think & Do is the HMI screen tool. ScreenView appears in an independent window that provides a complete HMI screen development environment. The graphical capabilities and functionality in v8.0 far surpass any previous screen tools we have employed for this PC-based control environment.

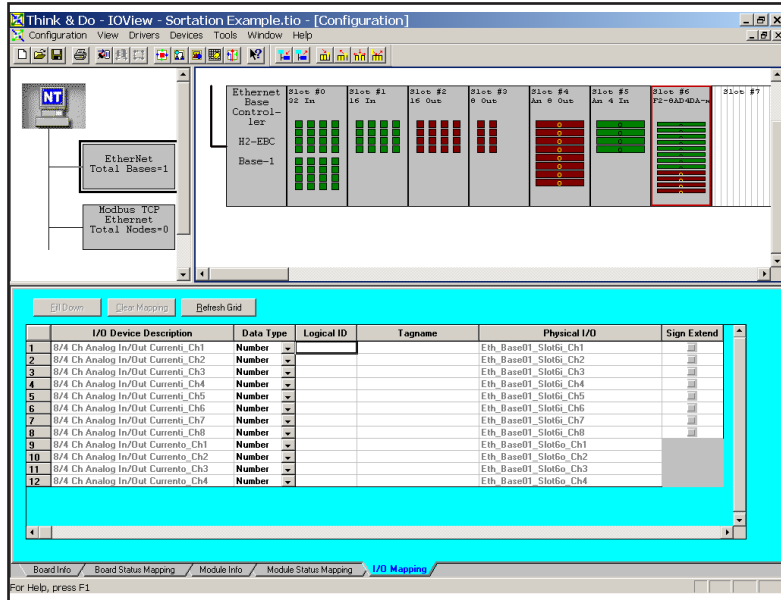


Think & Do 8.0 Overview

I/OView for configuring your project I/O

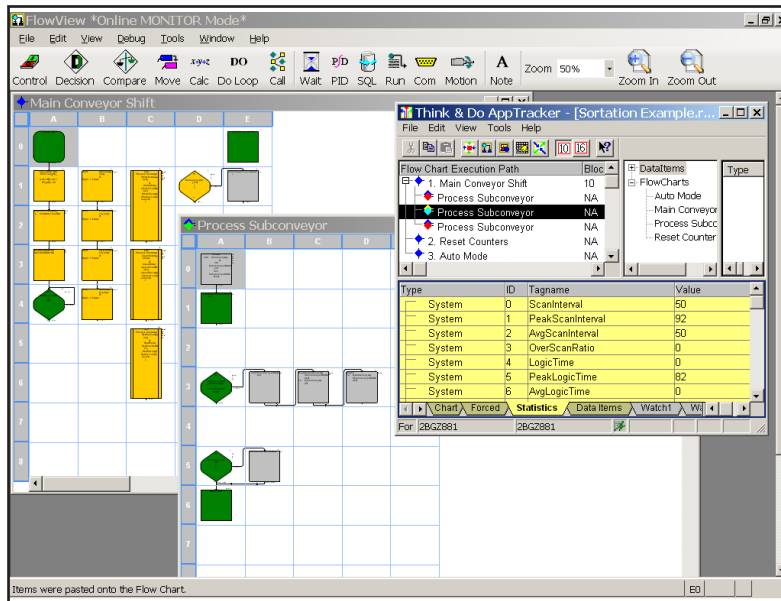
Use I/OView to easily:

- Specify inputs, outputs, and data items
- Configure I/O
- Add I/O drivers and devices
- Map I/O
- Scan and monitor I/O
- Use a watchdog timer



AppTracker provides a fast, graphical debugging tool

AppTracker is a stand-alone application. It can run even if the development tools in ProjectCenter are not running and can help identify problems easily during development.



PC Control with Field I/O

Think & Do, with your choice of I/O, is a powerful, flexible solution for all your automation needs. The example below uses Ethernet, but Think & Do PC Control supports DeviceNet, Profibus, and other popular fieldbus networks as well.

Business System

Uplink to Office LAN

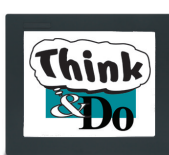


Control PCs using separate Ethernet ports to isolate the control networks from the business LAN(s)



Ethernet link to production databases

Data tags from other PCs are shared over LAN for HMI and control



Industrial modem connection supplies machine support data to OEM



Think & Do controls application of specialty surfaces in oven using complex flow calculations. Also performs visual inspection of finished product



Terminator I/O distributes small groups of I/O at control points throughout the process

Ethernet Base Controller's [TIH-EBC(100)] on-board serial port provides a link to label printer/appliator or another serial device.

Dedicated I/O LAN

Main factory floor PC coordinates production, manages product database, and controls material handling systems



Think & Do controls automated grinding machine. Local HMI with touchscreen replaces pushbuttons



DL205 I/O on Ethernet supports a wide range of I/O, including the H2-CTRIO(2) counter module

Fail-safe mode choices:

- 1) All I/O off
- 2) Timer-based I/O hold
- 3) Preset pattern

(For all distributed I/O mastered from a PC.)

Third-party PC motion card controlling three-axis servo system for grinding heads.

Third-party PC card interface to Ethernet vision inspection system



SE-SW8U Stride industrial Ethernet switch

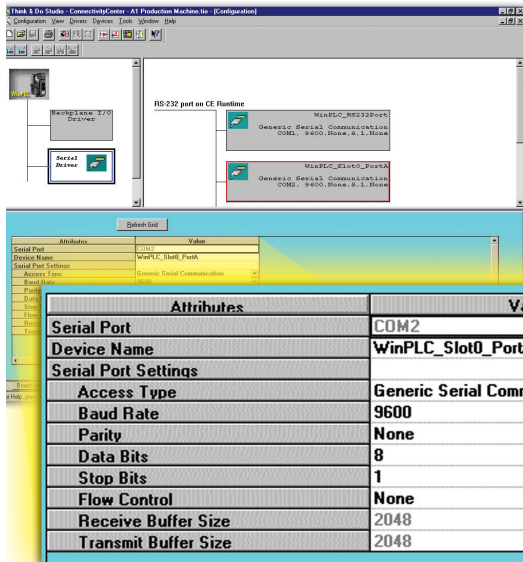


GPB/IEEE488 to legacy Laser Surface Analyzer



All industrial hardware shown is available in this catalog

Serial Communications via EBC



H2-SERIO



H2-SERIO-4

Easy point and click access to set communication parameters for each port individually

H2-SERIO \$181.00
H2-SERIO-4 \$181.00

H2-SERIO / H2-SERIO-4

In addition to the built-in serial port on the EBC, you can also add as many as nine additional serial ports for Think & Do applications. Install up to eight modules into an H2-EBC(100) base (limits are power budget and number of slots in the base). These modules have "PC-like" serial ports to communicate to multiple serial devices, such as barcode scanners, scales, printers and modems.

The H2-SERIO has three RS-232C ports, while the H2-SERIO-4 has two RS-232C ports and one RS-422/485 terminal.

All Think & Do products include advanced string and array functions that make manipulating serial data a snap. Both Think & Do and Think & Do Live! support easy point-&-click access to set baud rate, parity, data bits, and stop bits for each port. Think & Do allows each port to be designated as a Modbus slave or a generic serial device. Each port on the H2-SERIO(-4) module is capable of full hardware handshaking.

See the DL205 PLC section for H2-SERIO and H2-SERIO-4 specifications and wiring information.

Note: While the H2-SERIO(-4) will support virtually any serial device, processing large amounts of serial data will increase system response time. This is important to consider when using multiple H2-SERIO(-4) modules.

Due to the large amount of data inherent with serial devices, the H2-SERIO(-4) module is not supported across an H2-ERM - H2-EBC link. The H2-SERIO(-4) module is only supported in H2-EBC/H2-EBC100 bases connected to a PC system master.

I/O Selection Guide for PC Control

Our PC-based control architecture allows you to choose I/O from our most complete and flexible I/O families. AUTOMATIONDIRECT I/O also supports the most popular control networks, such as Ethernet, Profibus and DeviceNet. Check out this chart to see most of the available options. Refer to I/O specifications in the PLC or Field I/O section for a complete list.

DL205 Discrete Input Modules			DL405 Discrete Input Modules			DL405 Temperature Modules		
D2-08ND3	8-pt 12-24VDC sink/source	\$57.00	D4-08ND3S	8-pt 12-24VDC source	retired	F4-08RTD	8-ch RTD	\$562.00
D2-16ND3-2	16-pt 24VDC sink/source	\$96.00	D4-16ND2	16-pt 12-24VDC source	\$128.00	F4-08THM	8-ch thermo F/type, (J,E,K,R,S,T,B,N,C)	\$709.00
D2-32ND3	32-pt 24VDC	\$132.00	D4-16ND2F	16-pt 12-24VDC input, fast response	\$128.00	DL405 Specialty Modules		
D2-32ND3-2	32-pt 5-15VDC	\$132.00	D4-32ND3-1	32-pt 24VDC sink/source	\$199.00	D4-HSC	DL405 high speed counter	retired
D2-08NA-1	8-pt 110VAC	\$81.00	D4-32ND3-2	32-pt 5-12VDC sink/source	retired	D4-16SIM	8/16 pt input simulator	retired
D2-08NA-2	8-pt 170-265VAC, 2 commons	\$103.00	D4-64ND2	64-pt 20-28VDC source	\$261.00	Terminator I/O Discrete Input Modules		
D2-16NA	16-pt 110VAC	\$142.00	D4-08NA	8-pt 110-220VAC	\$116.00	T1K-08ND3	8-pt 12-24VDC sink/source	\$75.00
DL205 Discrete Output Modules			D4-16NA	16-pt 110VAC	\$161.00	T1K-16ND3	16-pt 12-24VDC sink/source	\$118.00
D2-04TD1	4-pt 12-24VDC sink	\$71.00	D4-16NA-1	16-pt 220VAC	retired	T1K-08NA-1	8-pt 110VAC	\$96.00
D2-08TD1	8-pt 12-24VDC sink	\$60.00	D4-16NE3	16-pt 12-24VAC/VDC sink/source	\$128.00	T1K-16NA-1	16-pt 110VAC	\$155.00
D2-08TD2	8-pt 12-24VDC source	\$60.00	F4-08NE3S	8-pt 90-150VAC/DC sink/source isolated	retired	Terminator I/O Discrete Output Modules		
D2-16TD1-2	16-pt 12-24VDC sink, 0.1A/pt 1.6A/mod	\$105.00	DL405 Discrete Output Modules			T1K-08TD1	8-pt 12-24VDC sink	\$86.00
D2-16TD2-2	16-pt 12-24VDC source, 0.1A/pt 1.6A/mod	\$105.00	D4-08TD1	8-pt 12-24VDC sink	retired	T1K-08TD2-1	8-pt 12-24VDC source	\$86.00
D2-32TD1	32-pt 24VDC sinking	\$135.00	F4-08TD1S	8-pt 24-150VDC sink/source isolated out	retired	T1H-08TDS	8-pt 12-24VDS isoated sink/ source	\$163.00
D2-32TD2	32-pt 24VDC sourcing	\$135.00	D4-16TD1	16-pt 5-24VDC sink	\$166.00	T1K-16TD1	16-pt 12-24VDC sink	\$130.00
D2-08TA	8-pt 18-220VAC	\$115.00	D4-16TD2	16-pt 12-24VDC source	\$166.00	T1K-16TD2-1	16-pt 12-24VDC source	\$126.00
D2-12TA	12-pt 18-110VAC	\$142.00	D4-32TD1	32-pt 5-24VDC, sink	\$220.00	T1K-08TA	8-pt 110-240VAC	\$147.00
D2-04TRS	4-pt isolated relay 5-30VDC or 5-250VAC	\$72.00	D4-32TD1-1	32-pt 5-15VDC, sink	retired	T1K-08TAS	8-pt 110-240VAC isolated commons	\$152.00
D2-08TR	8-pt relay, 5-30VDC or 5-240VAC	\$72.00	D4-32TD2	32-pt 12-24VDC, source	\$220.00	T1K-16TA	16-pt 110-240VAC	\$172.00
F2-08TR	8-pt relay, 10A/com, 5-30VDC or 5-240VAC	\$87.00	D4-64TD1	64-pt 5-24VDC sink	\$311.00	T1K-08TR	8-pt relay 5-30VDC or 5-240VAC	\$94.00
F2-08TRS	8-pt relay 12-28VDC, or 12-250VAC	\$117.00	D4-08TA	8-pt 18-220VAC	\$205.00	T1K-16TR	16-pt relay 5-30VDC or 5-240VAC	\$162.00
D2-12TR	12-pt relay, 5-30VDC or 5-250VAC	\$116.00	D4-16TA	16-pt 18-220VAC	\$243.00	T1K-08TRS	8-pt isolated relay 5-30VDC or 5-240VAC	\$125.00
DL205 Combination Discrete Modules			D4-08TR	8-pt relay 5-30VDC or, 5-250VAC	\$139.00	Terminator I/O Analog Modules		
D2-08CDR	Combo 4-pt 24VDC in and, 4-pt relay out	\$69.00	F4-08TRS-1	8-pt relay 12-30VDC or, 12-250VAC	\$190.00	T1F-08AD-1	8-ch analog input 4-20mA 14-bit res	\$341.00
DL205 Analog Modules			F4-08TRS-2	8-pt relay 12-30VDC or, 12-250VAC	\$216.00	T1F-08AD-2	8-ch analog input voltage 14-bit res	\$341.00
F2-04AD-1	4-ch input, 4-20mA 12 bit res	\$232.00	D4-16TR	16-pt relay 5-30VDC or, 5-250VAC	\$210.00	T1F-08DA-1	8-ch analog output 4-20mA 12-bit res	\$436.00
F2-04AD-2	4-ch input, voltage 12 bit res	\$255.00	Network Bus Interfaces and I/O Bases			T1F-08DA-2	8-ch analog output voltage 12-bit res	\$469.00
F2-08AD-1	8-ch input 4-20mA, 12-bit res	\$286.00	DL205 and DL405 bases, Terminator I/O power supplies and terminal bases, Bus adapter modules for PC control: DL205 (Ethernet, Profibus, DeviceNet, SDS); DL405 (Ethernet); Terminator I/O (Ethernet, Profibus, DeviceNet)			T1F-16AD-1	16-ch analog input 4-20mA 14-bit res	\$479.00
F2-08AD-2	8-ch input voltage, 12-bit res	\$304.00				T1F-16AD-2	16-ch analog input voltage 14-bit res	\$480.00
F2-02DA-1	2-ch output 4-20mA, 12-bit res	\$183.00	DL405 Analog Modules			T1F-16DA-1	16-ch analog output 4-20mA 12-bit res	\$673.00
F2-02DA-2	2-ch output voltage, 12-bit res	\$191.00	F4-04AD	4-ch analog input voltage/current	\$493.00	T1F-16DA-2	16-ch analog output voltage 12-bit res	\$723.00
F2-02DA-1L	2-ch 4.20 mA out 12-bit, ext 12VDC pwr	retired	F4-04ADS	4-ch isolated analog voltage/current	\$707.00	T1F-14THM	14-ch thermocouple 16-bit res	\$618.00
F2-02DA-2L	2-ch voltage out 12-bit, ext 12VDC pwr	retired	F4-08AD	8-ch analog input, voltage/current	\$619.00	T1F-8AD4DA-1	I/O 8-ch analog input 4-ch analog output, current	\$413.00
F2-02DAS-1	Isolated, 2-ch 4-20mA 16-bit out	\$255.00	F4-16AD-1	16-ch analog input, current, 12-bit	\$683.00	T1F-8AD4DA-2	I/O 8-ch analog input 4-ch analog output, voltage	\$413.00
F2-02DAS-2	Isolated, 2-ch voltage 16-bit out	\$277.00	F4-16AD-2	16-ch analog input, voltage, 12-bit	\$714.00	Terminator I/O Specialty Modules		
F2-08DA-1	8-ch, 4-20mA, 12-bit out	\$347.00	F4-04DA-1	4-ch analog output, current, 12-bit	\$417.00	T1H-CTRIO	High-speed counter with pulse out	\$346.00
F2-08DA-2	8-ch, 0-5VDC or 0-10V, DC, 12-bit out	\$312.00	F4-04DA-2	4-ch analog output, voltage, 12-bit	\$456.00			
F2-4AD2DA	4-ch in /2-ch out., 4-20mA 12-bit res.	\$327.00	F4-04DAS-1	4-ch isolated, 16-bit analog out, 4-20mA	\$639.00			
F2-8AD4DA-1	8-ch in/4-ch out, current, 16-bit	\$410.00	F4-04DAS-2	4-ch isolated 16-bit analog output, voltage	retired			
F2-8AD4DA-2	8-ch in/4-ch out, voltage, 16-bit	\$406.00	F4-08DA-1	8-ch analog output, current	\$679.00			
F2-04RTD	4-channel RTD, 0.1 DEG C res	\$349.00	F4-08DA-2	8-ch 0-5VDC or 0-10VDC, 12-bit analog out	\$690.00			
F2-04THM	4 ch thermocouple or, 16-bit volt. input	\$343.00	F4-16DA-1	16-ch analog output, current	\$819.00			
			F4-16DA-2	16-ch 0-5VDC or 0-10V DC 12-bit analog out	\$833.00			
DL205 Specialty Modules								
H2-CTRIO2	DL205 high speed counter with pulse out	\$326.00						
F2-08SIM	8-pt input simulator	\$69.00						
H2-SERIO(-4)	3-port serial for Win PLC	\$181.00						