

Everyman's IIoT

StrideLinx

Secure Remote VPN Access & Data Solution



StrideLinx
VPN Router
starting at

\$400.00

(SE-SL3001)

Verizon
AT&T
T-mobile
4G LTE
supported

3rd party
cloud
platforms
supported

REMOTE ACCESS ANYTIME/ANYWHERE

- Mobile VPN support for 3rd party mobile apps
- FREE 10GB bandwidth per month per account
- Unlimited users
- Unlimited mobile sessions
- Unlimited client connections
- Cloud reporting / logging, cloud notify / alarming, and other options available

StrideLinX Remote Access & Data Solution

The first choice for affordable, secure remote access.

Why do I need remote access?

One word. . . . downtime. With StrideLinX you can remotely connect to multiple site locations all from your browser or mobile device. Easily monitor or troubleshoot multiple systems without the need for an expensive site visit. So whether it's a 3am shutdown in Memphis or an unexpected service call from Houston, you can eliminate their downtime while preserving yours with remote access from StrideLinX.

How does it work?

Place the StrideLinX router near your machine or process and connect devices like PLCs or HMIs directly to it. Once the router automatically connects to the StrideLinX cloud, you can then link to the remote devices through a secure VPN connection as if you were directly connected on-site. It's that easy; the most affordable, secure solution without any hassle!

Can I set this up myself?

Absolutely! Router configuration and connection can be completed in as little as 2 minutes.

Of course if you would like any assistance, we've got you covered with FREE technical support for the life of the product. If needed, give us a call at (800) 633-0405 9am to 6pm EST Monday through Friday, we'll be glad to help.

How secure is it?

StrideLinX incorporates many security features for both remote access and user management.

Remote access: StrideLinX router firmware makes use of proven encryption standards like TLS 1.2 and is ISO27001:2013 certified to ensure a secure data link from machine/process to the cloud. The StrideLinX Client also ensures a secure VPN connection from the cloud to your PC.

User management (requires a Professional/Premium license): Advanced role-based access features, event logging and two-factor authentication are just a few of the many ways StrideLinX keeps your system safe.

Will IT allow this?

We've taken IT's concerns to heart and incorporated features into StrideLinX that we feel will garner their approval. For one, an internal firewall is built in to every router to completely separate the office network (WAN) from the plant floor/machine network (LAN). This ensures users with remote access can only access the LAN side of the router. Secondly, all communication to the cloud is initiated with outbound messages to keep company firewalls intact and unwanted intruders out.

Lastly, StrideLinX offers a 4G router model that connects to the cloud via Verizon, AT&T or T-Mobile cellular service allowing you to alleviate IT's security concerns altogether.

StrideLinX

**IEC62443 Compliant
ISO27001:2013 Certified**
(cloud-based security standard)

StrideLinX Router
starting at
\$400.00
(SE-SL3001)

- ▶ Easy, DIY set-up with web-based configuration/dashboard
- ▶ VPN servers located worldwide for secure access to your machine/facility anytime, anywhere
- ▶ Multiple router connection options including WiFi, 4G or Gigabit wired; 4G router is certified to work on Verizon® and AT&T® networks
- ▶ 10GB monthly bandwidth included with every StrideLinX company account plus optional add-on services for cloud reporting / data logging, premium branding, etc.

Cloud Enable Your Machines

Click the video for a quick introduction to StrideLinX and its capabilities.

45-day Money-Back Guarantee

FREE Technical Support
Located in USA

2 YEAR WARRANTY

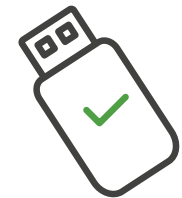
Awesome features for an awesomer price!

The starting price alone (\$400.00) is a great reason to take a closer look at StrideLinX for your remote access needs. But the low price is definitely not all. Here are 15 more reasons you should consider StrideLinX.



IT approved!

The StrideLinX industrial router initiates communication with the StrideLinX VPN server using an outgoing connection on port 443. This ensures compliance with IT security policies/procedures and functions with existing corporate firewall settings.



Simple setup

Log into the StrideLinX platform, follow the easy steps to create the StrideLinX VPN router configuration file, download this to a USB drive and insert the drive into the router. That's it! It really couldn't be any easier.



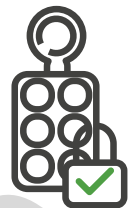
Link up wirelessly

In addition to the wired option, the StrideLinX remote access and data solution offers 4G LTE and WiFi router versions. The wireless models provide WAN redundancy/failover to enhance connection reliability. The 4G LTE model allows customers to access remote locations that do not have internet access. The WiFi model allows customers to configure the router as an access point or client. All models have 4 LAN ports and a WAN port for optional wired connections.



Link Shield VPN

Protect your vital data with StrideLinX's secure VPN connection. All data passing between the router and client is shielded from unwanted access using **secure 2048-bit encryption**.



Safety lockout enabled

All StrideLinX VPN routers have a discrete input which allows a switch to locally enable or disable the communications link. This provides maintenance personnel with a safe working environment by preventing any remote control of the machine while they are working.



Fortified login

Stronger platform security is provided through the use of two-factor authentication, requiring an additional password using time-based encryption.



StrideLinX on the Go with Mobile VPN

The info you need is at your fingertips with StrideLinX iOS and Android apps. From your smartphone easily monitor the status of installed routers, connected PLC/HMIs, or use 3rd party apps to securely access and control your machines wherever you go.



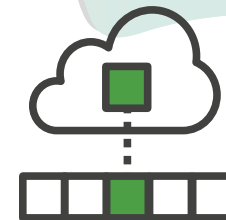
Easily log, monitor and share data with the StrideLinX Platform

Let the StrideLinX platform log and monitor your data. Add cloud logging/reporting to your router to have data readily available on the platform anytime, and/or have the data sent directly to you with scheduled reports. You can also add the cloud notify feature to let StrideLinX alert you when anomalies arise. (Not available with SE-SL3001 router)



Customizable user management

Role-based access control and access categories allow you to group users or routers by customer, shift, plant, region, machine type, or any other criteria you deem important.



A-la-carte options for easy upgrade

Optimize your platform with options that include cloud reporting/logging and cloud notifications. You can also add the StrideLinX Professional license which allows white labelling of the StrideLinX platform, unlimited VPN data traffic, and advanced user and device management. Low-cost subscriptions provide easy, convenient upgrades and allow you to choose which options you need for your particular application.



Stay in the know with Cloud Notify

Alert specific personnel of prioritized events in real time. Automatically be notified via email and mobile app push notification of alarm conditions, daily metrics, or any other data. (Not available with SE-SL3001 router)



Gigabit comes standard

Get Gigabit Ethernet speed standard on all 5 ports of the StrideLinX router for less than you'd pay for slower speeds elsewhere.



Web Based Platform

Access your machines from anywhere in the world directly through your browser.



Make it yours!

Grow your business with your own Industry 4.0 platform by white labelling the StrideLinX platform and hardware with your corporate logo, company name, and color scheme.



3rd Party Cloud Support

Log your machine data directly to a 3rd party MQTT broker, including online services like Azure or Amazon Web Services (AWS), in parallel with the StrideLinX Cloud for easy machine-to-cloud integration with existing platforms.

StrideLinX

The Everyman's IIoT



Cloud connect any of your Ethernet-ready devices at a price even the smallest OEM, machine builder or system integrator can afford! With StrideLinX you get secure, reliable access over the "industrial internet" to your field devices for the remote visibility needed to compete in today's connected world.

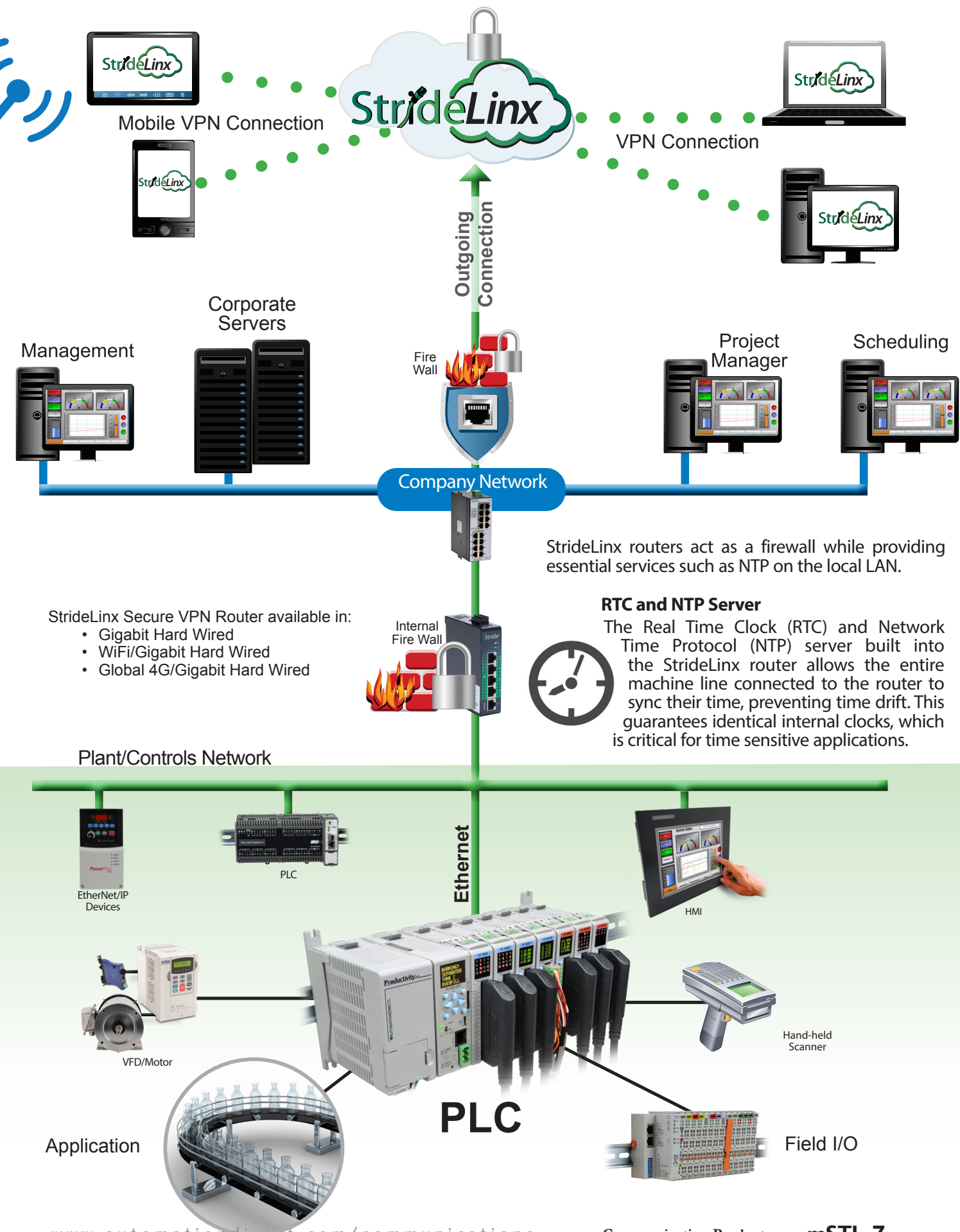
Program, monitor and troubleshoot all major brands through a secure VPN:

- AutomationDirect
- Allen-Bradley
- Siemens
- Omron
- Schneider Electric
- Many more...

No matter the industry, StrideLinX can remotely connect you to the "things" you need!

- OEM/Machine Builders
- Oil and Gas
- Package/Material Handling
- Power/Utilities
- Water and Wastewater
- Food and Beverage
- Building Automation
- Agriculture

The possibilities are endless!



StrideLinx Industrial VPN Router

Cloud enable your machines . . . for less!

Wired/WiFi



StrideLinx
wired and WiFi
\$621.00
(SE-SL3011-WF)



1 Antenna

or



For applications where wireless connections are preferred, StrideLinx offers a WiFi capable router and (2) 2.4GHz WiFi antennas. WiFi antennas start at \$10.50 and are offered in dome and whip/straight styles.

WiFi capable routers give you the ability to wirelessly connect to your company network and/or wirelessly connect control devices to the router.

Wired/4G LTE



StrideLinx
wired and 4G
\$727.00
(SE-SL3011-4GG)

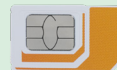


2 Antennas

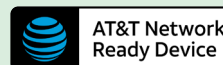
or

or

or



verizon



For applications where Internet connections are not readily available, StrideLinx offers a 4G cellular capable router and (3) LTE antennas which start at \$13.50.

A SIM card and/or data plan will need to be purchased ([Enabling Elements](#) AT&T SIM card is included with router).

- For AT&T data plans, [click here](#).
- For Verizon data plans and SIM cards, [click here](#).
- For T-Mobile data plans and SIM cards, [click here](#).

Wired only



StrideLinx
wired only
\$400.00
(SE-SL3001)

The StrideLinx wired-only router provides (5) Gigabit Ethernet ports for your control device and Internet connections. No additional components are required.

Need Cables? Yep we got those too. Check out our wide selection of low-cost Industrial Ethernet cable offered in individual patch cables or up to 1000' reels.



Cat6a cables
starting at:
\$9.00
(C6A-STPBL-S3)

Cat5e cables
starting at:
\$6.75
(C5E-STPBY-S3)

OURS

Industrial
VPN Router
starting at:
\$400.00
SE-SL3001



THEIRS

Industrial
VPN Router
starting at:
\$811.00
EC71330

VPN Router/ Platform Comparison

	AutomationDirect StrideLinx	VS.	Ewon COSY+ / COSY 131
VPN Router (wired only)	\$400.00 SE-SL3001 <ul style="list-style-type: none"> • # Ports: 5 (RJ45) • Port Speed: Gigabit Ethernet (1000Mbps) • Case Style: metal, IP20, DIN rail 		\$811.00 EC71330 (COSY+) <ul style="list-style-type: none"> • # Ports: 4 (RJ45) • Port Speed: Fast Ethernet (100Mbps) • Case Style: plastic, DIN rail / wall mount
VPN Router (wired/WiFi)	\$621.00 SE-SL3011-WF <ul style="list-style-type: none"> • # Ports: 5 (RJ45) • Port Speed: Gigabit Ethernet (1000Mbps) • Case Style: metal, IP20, DIN rail • 2.4GHz antenna sold separately (starting at \$10.50) 		\$943.00 EC7133J (COSY+) <ul style="list-style-type: none"> • # Ports: 4 (RJ45) • Port Speed: Fast Ethernet (100Mbps) • Case Style: plastic, DIN rail / wall mount • 2.4GHz antenna included
VPN Router (wired/cellular)	\$727.00 SE-SL3011-4GG <ul style="list-style-type: none"> • # Ports: 5 (RJ45) • Port Speed: Gigabit Ethernet (1000Mbps) • Case Style: metal, IP20, DIN rail • 4G LTE (Verizon certified, AT&T certified or T-Mobile) 		\$1,037.00 EC6133H (COSY 131) <ul style="list-style-type: none"> • # Ports: 4 (RJ45) • Port Speed: Fast Ethernet (100Mbps) • Case Style: plastic, DIN rail / wall mount • 4G LTE (AT&T only)
Platform Cost	FREE <ul style="list-style-type: none"> • 10GB per month per account • Unlimited users • Unlimited mobile sessions • Unlimited client connections • FREE smartphone app 		FREE <ul style="list-style-type: none"> • 3GB per month per account • Unlimited users • 5 mobile sessions • 1 client connection

All prices are U.S. published prices. AutomationDirect prices as of 10/02/2023. Ewon prices taken from www.industrialnetworking.com 10/02/2023.

Dependable hardware, configured with ease.

Global Frequency Bands:

The SE-SL3011- 4GG supports Verizon and worldwide LTE frequency bands - LTE FDD: B1, B2, B3, B4, B5, B7, B8, B12, B13, B18, B19, B20, B25, B26, B28; LTE TDD: B38, B39, B40, B41

SIM Card slot (4G model):

Uses a standard SIM (2FF) card for 4G LTE Verizon, AT&T or T-Mobile cellular connections (AT&T SIM card included with router). Great for sites where Internet connections may not be readily available.



Antenna port(s) (4G/WiFi models):

The antenna connector is a standard SMA screw connector with 5 antenna options available:

- Three LTE antennas in whip/tilt, whip/straight and dome styles
- Two 2.4GHz WiFi models in whip/straight and dome styles.

WiFi

USB port:

USB 2.0 port for easy router configuration using the included USB drive.

USB over IP:

The StrideLinx router USB 2.0 port supports USB-over-IP communication which allows a remote computer to connect to the USB port over a network connection.

LAN/Control Network Gigabit ports:

Four RJ45 Gigabit Ethernet ports for connectivity to PLCs, HMIs, drives, or any Ethernet-capable control device.

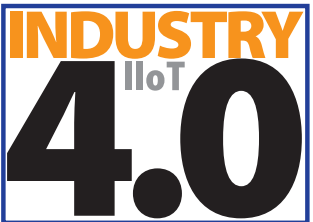
WAN/Company Network (Gigabit port):

One RJ45 Gigabit Ethernet port for connectivity to a company-wide network.

Industrial VPN Router

StrideLinx Router
starting at
\$400.00
(SE-SL3001)

The StrideLinx router is equipped with a built-in configurable firewall that provides complete isolation between the control network (LAN) and the company network (WAN). Only authorized and encrypted data verified with a valid certificate will be allowed to pass. This network separation ensures that users with remote access can only access the LAN side of the network and not the rest of the network.



Easy 3-step router configuration:

1. Configure

Log in to your company account and using the web-based dashboard within the platform, configure the router's parameters.

2. Download

Download the parameter file to the provided USB drive.

3. Connect and go!

Install the USB in the router and it will automatically authenticate and connect to the proper account on the platform. This USB can then be used on any other router that needs to be configured for the same company account.

StrideLinx's new and improved web-based platform

The StrideLinx platform has been improved with easier navigation, user-defined page layouts, and more data display options to make remote access and monitoring even easier.

- A Portal app for viewing and connecting to available devices and monitoring machine data using customized pages built in the Studio app
- A Studio app that allows users to create device page layouts using a wide variety of selectable components including data tables, line graphs, status bars, gauges, and many more
- A Fleet Manager for a one-stop-stop for device configuration
- An Admin app with corporate identity configuration, user management options, extensive audit trail, license info, and more

For the latest prices, please check AutomationDirect.com.

For the latest prices, please check AutomationDirect.com.

Fleet Manager

All Search for devices

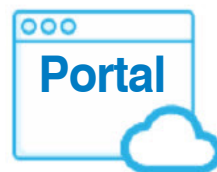
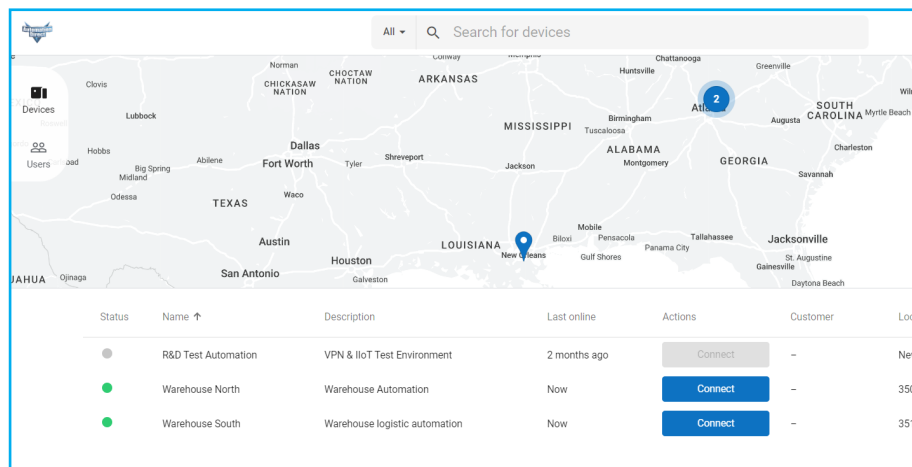
Devices	Status	Name ↑	Last online	Serial number
Device templates				
Tools				
		R&D Test Automation	2 months ago	17125870
		Warehouse North	Now	17145118
		Warehouse South	Now	17138113



- Configure and add routers
- Transfer device
- Remove device
- Update firmware
- Associate router with groups
- Connect to VPN
- Download VPN client



StrideLinx mobile app available in your App Store now



- Connect to VPN
- Launch VNC, HTTP services
- Monitor machine data
- Invite users
- View notifications

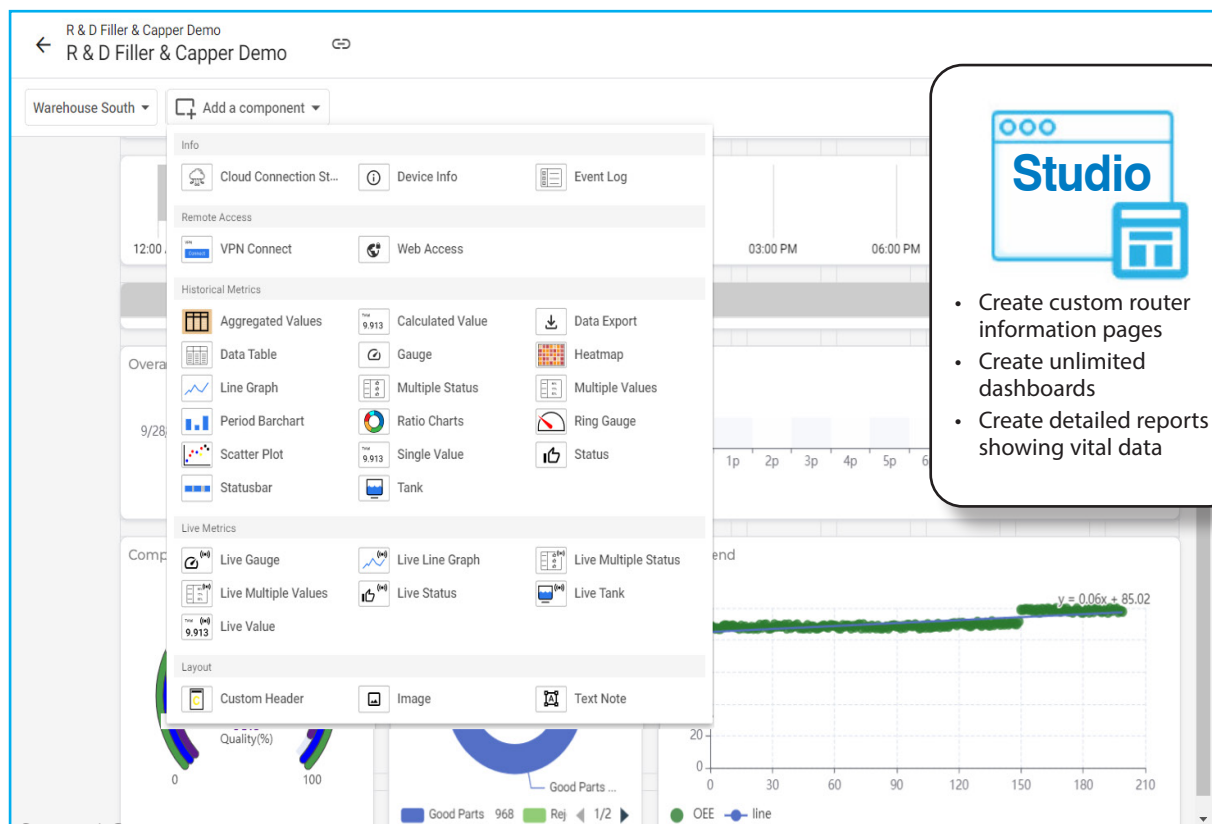
Admin

Identity Roles Groups Licenses Usage Audit trail Translations Apps

Licenses	Type	Value	Expires
	Cloud Reporting Standard		9/24/...
	Cloud Reporting Plus		8/6/2...
	Real-time Machine Monitor		7/31/...
	Cloud Reporting Plus		8/9/2...
	Professional		7/3/2...



- Manage users and access
- Configure your company Identity (Branding)
- Add licenses –Cloud Reporting/Logging, Cloud Notify
- Remove a company
- Enforce 2-factor authentication
- Audit trail



- Create custom router information pages
- Create unlimited dashboards
- Create detailed reports showing vital data

Warehouse South

Dashboards R & D Filler & Capper Demo Demo Widgets Reports

Report title Report period Actions

OEE Report Today Schedule Send report

Schedule report: Machine

My time zone: America/New_York

Time period Today

Frequency Frequency * Weekly

Every Every * Week

Start Start * 10/1/2023

On Sat Sun Mon Tue Wed Thu Fri

Delivery time 1:00 P... (GMT-05:00) Eastern Time - N...

With a Cloud Reporting/Logging license, you can create informative reports and have them distributed to the necessary personnel immediately or at a scheduled interval.

Click the video for more details on the StrideLinx platform



The next generation IIoT platform

OVERVIEW

Admin App - User management and corporate branding

The StrideLinX Admin App houses all of the user management options for the platform. Create roles, categories, and groups that determine each user's level of access. Here you can also view an audit trail of recent platform activity and configure the platform with your own company identity. Choose your custom color scheme, logo, and style from within the Admin App.

Admin

Identity

Roles

Groups

Roles

Name	Type	Access category	
Customer	Group-specific	Category A	
Engineer	Company-wide	-	
Platform administrator	Company-wide	Category A	

Add role

Access categories

Category A	Default	
Category B		

Add access category

Company ID

9195-9865-0

Company name

AutomationD

Country

United States

Company branding

Edit

Site title

AutomationDirect Pro

Edit

Favicon

Upload file

Portal settings

Default list view

Default user invite language

Company branding

Select your company logo

Upload logo

Select your company colors

Detect logo colors

Primary

Secondary

Text color *

Light text on dark color

Text color

Light text on dark color

Remove color

Select your branding style

Header style

White fill without colored line

Logo style *

No background color

Reset

Audit trail

Date and time ↓	Action	Target	Actor	
10/10/2023, 3:54:48 PM	UPDATE	Agent	MDR server AM05	Details
10/10/2023, 3:54:47 PM	TRIGGER	AgentMqttLoggingConfigurationDownload	Warehouse North	Details
10/10/2023, 3:54:12 PM	UPDATE	Agent	MDR server AM02	Details
10/9/2023, 3:14:26 PM	UPDATE	Agent	MDR server AM05	Details
10/9/2023, 3:14:25 PM	TRIGGER	AgentMqttLoggingConfigurationDownload	Warehouse South	Details
10/9/2023, 3:13:21 PM	UPDATE	Agent	MDR server AM06	Details
10/9/2023, 11:35:21 AM	UPDATE	VpnSession	RSV server AT01	Details
10/9/2023, 11:34:58 AM	UPDATE			Details

The Audit trail keeps a running log of platform events with specific details on the who, what, and when of each action.

Company Branding

Company branding is available with the optional professional company license which enables you to set your own company name, logo, favicon, and color scheme. These changes apply to every page of the StrideLinX platform and to every e-mail sent.

Text here

Devices

Linked text here

Text field here

Text field here

Button

☒

Button

Admin

Identity

Roles

Groups

Licenses

Usage

Audit trail

Translations

Apps

Licenses

Type	Value	Expires on	
Cloud Reporting Standard		9/24/2024, 9:32:43 PM	Warehouse North
Cloud Reporting Plus		8/6/2024, 10:23:15 PM	
Real-time Machine Monitor		7/31/2024, 6:48:34 PM	
Cloud Reporting Plus		8/9/2024, 1:56:12 PM	Warehouse South
Professional		7/3/2024, 2:03:48 PM	

Activate new licenses or view current licenses with expiration information and assigned devices.

StrideLinX

Engineer

Customer

User Management

Click the video below for more on User Management options

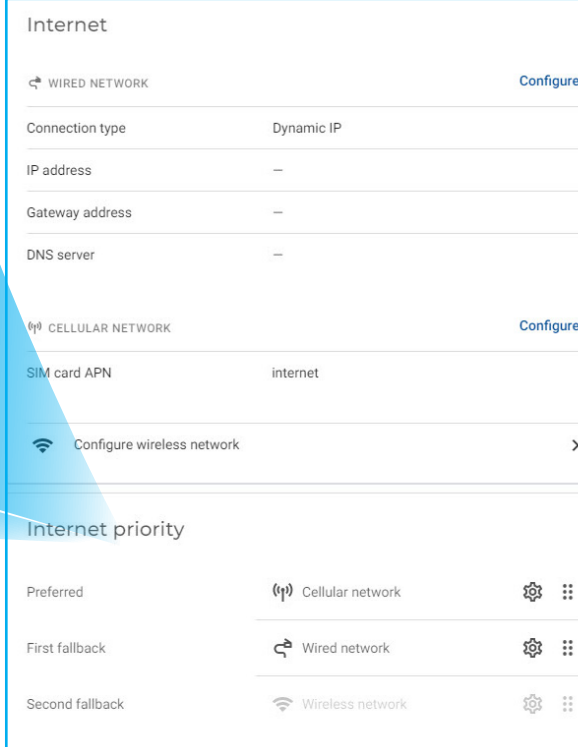
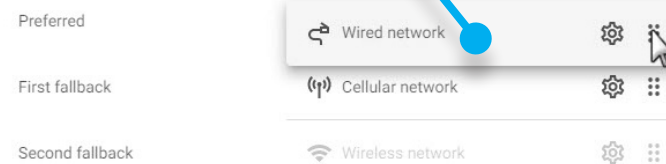
Fleet Manager App - Configure and manage your routers

The Fleet Manager is a one-stop-shop for all your VPN router options. Download the VPN client, create your router configuration file, transfer your router to a new company, perform a factory reset, update router firmware, or remove a router altogether.

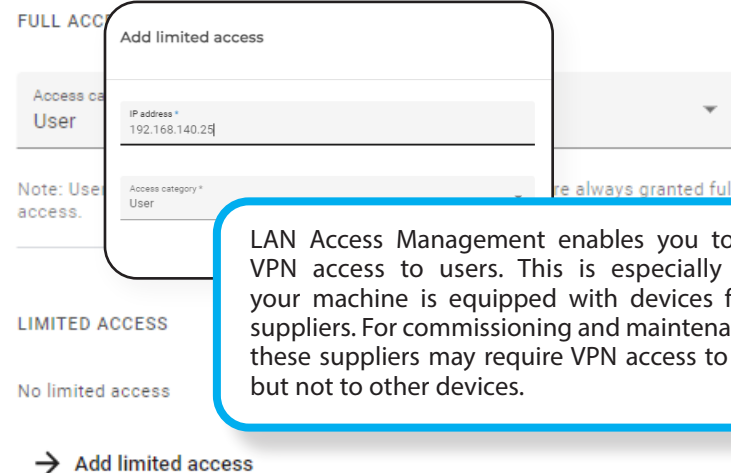
You can also create a router template which can be used to quickly configure similar routers.

Set up a network fail-safe, by assigning your internet priorities. Arrange priority levels by dragging the available networks into the "Preferred", "First fallback" and "Second fallback" positions.

Internet priority

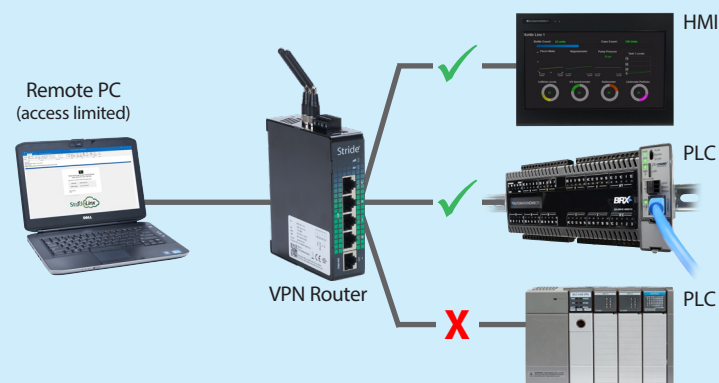


VPN connect



LAN Access Management enables you to give limited VPN access to users. This is especially useful when your machine is equipped with devices from different suppliers. For commissioning and maintenance purposes, these suppliers may require VPN access to their devices, but not to other devices.

Remote PC
(access limited)



Fleet Manager

Configure all of your VPN router communication parameters including IP addresses, Wifi hotspot, wireless connections and more.
Here, you can also assign the router a name and description, add groups to the router, and choose which pages and cards each router will use.

Check out all of the Fleet Manager options in this video



General

Name

Description

Location

Groups

Customer

Other

Edit

Edit

Alarm triggers

Edit trigger

Variable *

Name *

Severity *

Condition *

Instructions

Access category *

Configure your cloud notify alarms and decide when an alarm will trigger, the alarm priority, what the alarm message will say and which category the alarm belongs to. Alarm categories allow for specific alarms to go to specific personnel groups. Similar to the data tags, you can also export or import tag files.

After you activate your StrideLinX cloud reporting/logging service, configure your data tags: create new tags, change tag logging triggers, export the tag database or import new tags.

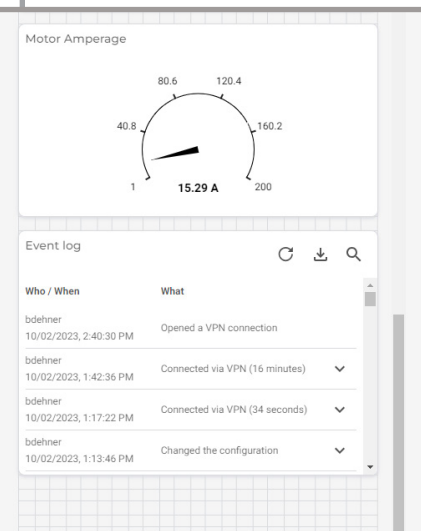
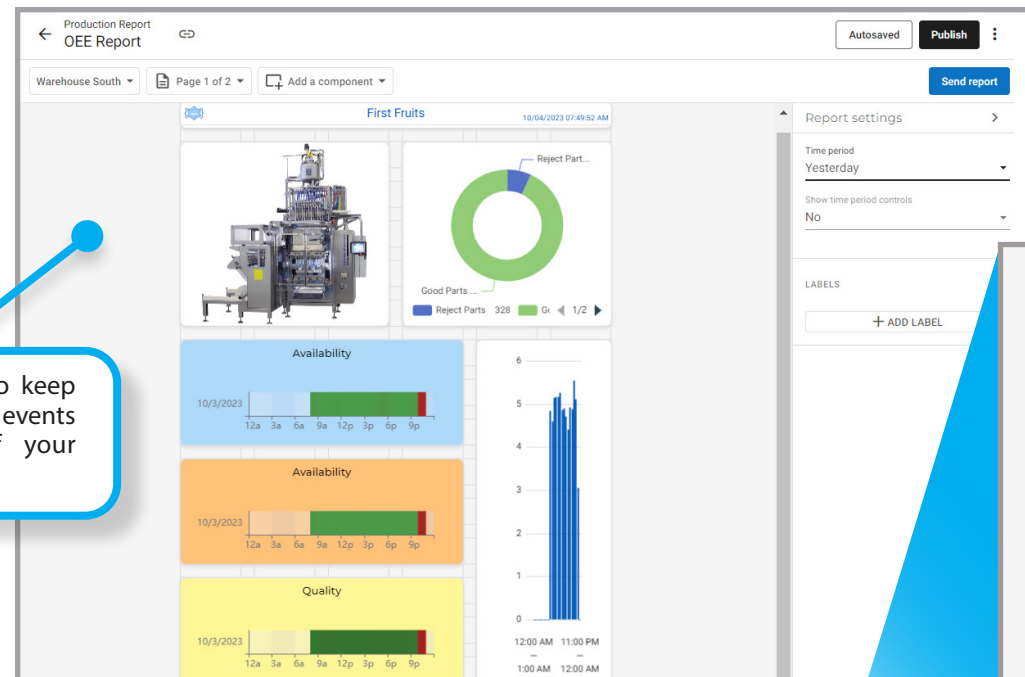
Name	Identifier	Type	Log on	Log off	Log interval	Log trigger	Log message
Actual Parts Per Minute	actual-parts-per-minute	Float32	Change	Up to 10 values per hour	On value changes and each hour of unchanged value		
Availability	availability	Float32	Interval	Even			
Calc Parts per Minute	calc-parts-per-minute	Float32	Change	Up to 10 values per hour	On value changes and each hour of unchanged value		
Conveyor Actual Speed	conveyor-actual-speed	Float32	Change	Up to 500 values per hour	On value changes and each hour of unchanged value		
Conveyor Command Speed	conveyor-command-speed	Float32	Change	Up to 1000 values per hour	On value changes and each hour of unchanged value		
Conveyor Faulted	conveyor-faulted	Boolean	Change	Up to 50 values per hour	On value changes and each hour of unchanged value		
Conveyor Max Speed	conveyor-max-speed	Float32	Change	Up to 10 values per hour	On value changes and each hour of unchanged value		
Motor Amperage	motor-amperage	Float32	Change	Up to 100 values per hour	On value changes and each hour of unchanged value		
Motor Frequency	motor-frequency	Float32	Change	Up to 100 values per hour	On value changes and each hour of unchanged value		
Motor Full Load Amperage	motor-full-load-amperage	Float32	Change	Up to 5 values per hour	On value changes and each hour of unchanged value		
Motor Max Temperature	motor-max-temperature	Float32	Change	Up to 100 values per hour	On value changes and each hour of unchanged value		

Studio App - Create custom dashboards and reports

Customize page layouts and device views that are displayed within the Portal App. The StrideLinx Studio provides everything you need to design each platform page with the information you and your customers require. A variety of design elements are available to choose from to build quick-and-easy device data display pages.

From the Studio App you can also build custom report pages using the same convenient data widgets. Once created, you can send the report directly from the Studio App or use the Portal App to schedule reporting events based on your specified time intervals.

Build custom report pages to keep personnel aware of important events and status information of your machines/systems.



With the click of a button you can preview the mobile layout. To switch back and forth, click the appropriate display icon at the top of the App.

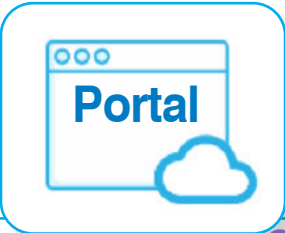
With an active cloud reporting/logging license, you can also configure data display pages that will show both historical and live device data using a variety of widgets.

Drag and drop widgets onto your dashboard.

Select the data source from the user-defined variables that are configured in the Fleet Manager App.

Portal App - Browse your devices and data

The Portal App is your launchpad that provides a well organized, easily navigable overview of all your devices. You can view devices in list or map format. From here you can VPN connect to the device of your choice, or depending on subscriptions, monitor machine data, schedule reports, or view notifications.



Map view of devices showing locations across the United States. Below the map is a table of devices:

Status	Name	Description	Last online	Actions	Location
●	R&D Test Automation	VPN & IIoT Test Environment	2 months ago	Connect	New Orleans, United States of America
●	Warehouse North	Warehouse Automation	Now	Connect	3505 Hutchinson Rd, Cumming, GA 30040, USA
●	Warehouse South	Warehouse logistic automation	Now	Connect	3510 Hutchinson Rd, Cumming, GA 30040, USA

The Portal App provides a bird's eye view off all your devices which can be displayed in list view, map view, or both. Easily VPN to the desired device with a click of a button and/or view device information pages that were created in the Studio App by clicking on the device name.

The Users section of the Portal App is where you can invite new users, remove existing users and modify user credentials. You can also assign users to certain roles and groups that were created in the Admin App.

Users section of the Portal App showing a list of users:

Name	Invited user	Expires in 6 days	Platform administrator	Two-factor authentication
Alex M	xxxxxxx@automationdirect.com	5 days ago	Platform administrator	Off
bdehne	xxxxxxx@automationdirect.com	11 minutes ago	Platform administrator	Off
Damon	xxxxxxx@automationdirect.com	1 day ago	Platform administrator	Off
David T	xxxxxxx@automationdirect.com	1 month ago	Platform administrator	On
Dirk	xxxxxxx@automationdirect.com	1 month ago	Platform administrator	Off
Greg	xxxxxxx@automationdirect.com	1 month ago	Platform administrator	Off
Ron N	xxxxxxx@automationdirect.com	1 month ago	Platform administrator	Off
Winn	xxxxxxx@automationdirect.com	4 days ago	Platform administrator	Off

Buttons: + Invite users, Get Started, VPN | Connected to Warehouse North, Details

Warehouse South - Reports section. A table shows report details:

Report title	Report period	Actions
OEE Report	Today	Schedule Send report

From the Portal App, you can also view a list of the reports created in the Studio App and either send the report immediately from this page or schedule a time for the report to be distributed.

Schedule report: Machine. Configuration options:

- Time period: Today
- Frequency: Frequency * Weekly
- Every: Every * Week
- Start: Start * 10/1/2023
- On: Sat, Sun, Mon, Tue, Wed, Thu, Fri (all checked)
- Delivery time: Delivery time * 1:00 P...
- Time zone: Time zone * (GMT-05:00) Eastern Time - N...

Buttons: Cancel, Schedule

Warehouse North - Overview section. Displays live data for Motor, Signal, and Water Level. Includes graphs and gauges.

Motor: 1,549 RPM

Signal: -39

Water Level: 85 %

Clicking on any device name from the list/map view will bring up the device information page you have assigned to that device. This page is built and published using the Studio App and, depending on subscriptions, it can display live or historical data using numerous graphs, charts, tables, etc.

StrideLinx logo and a video player showing the Portal App interface. Below the video is the text: PORTAL

Click the video for more details on the Portal App

Customize your platform with easy upgrades

StrideLinx offers more than just secure remote VPN access. Customize your routers and accounts with valuable add-on features - cloud data reporting/logging, cloud notify, or white label the StrideLinx platform to make it yours!

Licenses are ordered directly from AutomationDirect.com.

***Click chart below to shop subscriptions on our store**

Cloud Notify	StrideLinx's Cloud Notify feature provides automatic notification of critical events occurring at your remote installations. Just configure the events most important to you, set their priority level, and choose who to notify via push and email messages.	Cloud Notify \$131.00 <small>(SE-SL021-1)</small>
Cloud Data Reporting/Logging	StrideLinx's Cloud Data Reporting/Logging subscription records data at up to 10,000 samples per hour with unlimited data tags, unlimited cloud storage for 7 years with active license, unlimited number of data reports, and easy to use data dashboards. *Includes the Cloud Notify license	Basic Reporting/Logging 1,000 pts/hr. \$279.00/yr. <small>(SE-SLR010-1)</small> Professional Reporting/Logging 10,000 pts/hr. \$499.00/yr. <small>(SE-SLR011-1)</small>
Professional License	The StrideLinx Professional License allows you to add even more corporate identity to the cloud platform. On top of what Basic Branding allows, this license gives you the opportunity to white label the StrideLinx platform and also provides unlimited VPN data traffic and advanced user and device access management.	StrideLinx Professional \$949.00 <small>(SE-SLR001-1)</small>



StrideLinx Demo



To see the StrideLinx Cloud in action, scan the QR code or visit <https://go2adc.com/vpn-cloud> and click the StrideLinx demo site link (at the top of the page) to sign up for an interactive product tour.

The StrideLinx platform offers many benefits over the competition including more bandwidth, more concurrent connections, and more mobile sessions. With the easy affordable add-ons and a low-low router price, you can't go wrong with StrideLinx.

Basic Solution Comparison	AutomationDirect StrideLinx	VS.	eWON COSY 131
Basic License	FREE		FREE
Monthly Bandwidth Allocation (per company acct.)	10GB		3GB
Mobile VPN Support	Yes		Yes
Number of users/devices	Unlimited		Unlimited
Number of Mobile Sessions	Unlimited		5
Number of Concurrent Client Connections	Unlimited		1
Customized Platform Branding	Add-on		N/A
VPN Router (wired)	\$400.00 <small>SE-SL3001</small>		\$599.00 <small>EC61330</small>

All prices are U.S. published prices. AutomationDirect prices as of 12/07/2022. eWON prices taken from www.industrialnetworking.com 04/07/2021.



Cloud Data Reporting/Logging - Track live or historical system performance

Beyond free remote access, the StrideLinX platform can be upgraded with cloud data reporting / logging for only \$279/year. Cloud data logging allows you to save your system data within the platform for a convenient, web-based historical record of system performance available when you need it. Unlimited customized data reports can also be created and sent whenever to whomever you decide. (SE-SL3011 or SE-SL3011-XX routers required for data logging/reporting).



StrideLinX

With the data reporting component, you can increase visibility into process and asset operations by sharing information across your organization in an easily consumed format such as PDF and CSV.

LOOK TO THE PAST FOR INSIGHT INTO THE FUTURE

StrideLinX will log data to the cloud as fast as 10,000 samples per hour and will retain the data for up to 7 years!

Historical data can help determine when/if future system enhancements are needed and with clean looking, easily-configured data displays, you can show LIVE or HISTORICAL data graphically, in value or table form, or any way you choose.

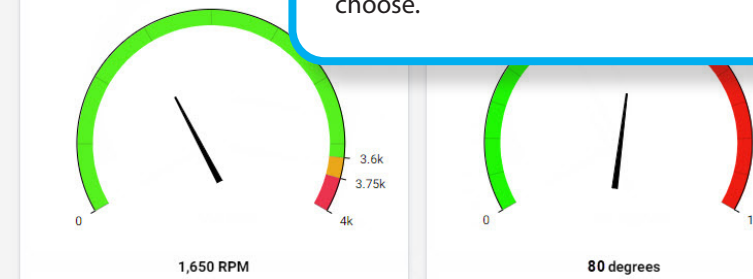
Date range

From	To
2/1/2021, 12:00:00 AM	2/28/2021, 11:59:59 PM

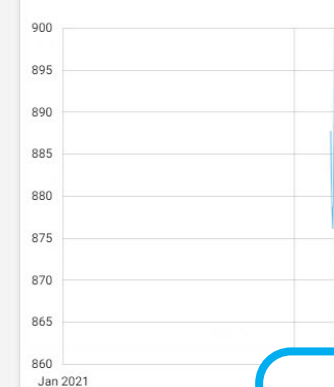
Today	Last 2 days from today	Last 3 hours
Yesterday	Last 2 days from yesterday	Last 6 hours
Previous week	Last 7 days from today	Last 12 hours
Previous month	Last 7 days from yesterday	Last 24 hours
Week to date	Last 30 days from today	Custom
Month to date	Last 30 days from yesterday	
Year to date	Last hour	

Cancel Apply

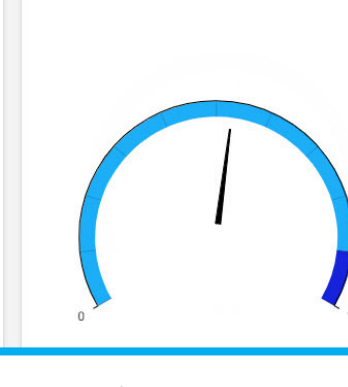
Generator RPM



Motor



Fuel Level



The StrideLinX platform makes it easy to configure your data tags with simple drop-down selections for variables, interval times, retention lengths, etc. Or you can simply import your data tags from a .CSV file with the tag import/export feature.

Tags

+ Add a filter									
<input type="checkbox"/>	Name ↑	Identifier	Type	Log on	Log when	Formula	Specification	Data points	Trigger
<input type="checkbox"/>	Indicator01	indicator-01	Boolean	Change	Up to 50 values per hour	-	On value changes only	-	-
<input type="checkbox"/>	Indicator02	indicator-02	Boolean	Change	Up to 50 values per hour	-	On value changes only	-	-
<input type="checkbox"/>	Indicator03	indicator-03	Boolean	Change	Up to 50 values per hour	-	On value changes only	-	-
<input type="checkbox"/>	Indicator04	indicator-04	Boolean	Change	Up to 50 values per hour	-	On value changes only	-	-
<input type="checkbox"/>	Indicator05	indicator-05	Boolean	Change	Up to 50 values per hour	-	On value changes only	-	-

Easy integration with popular protocols

Log data from your system/machine using:

- EtherNet/IP
- Modbus TCP
- OPC-UA
- BACnet
- MELSEC
- S7
- SMTP
- Plain Text TCP/IP

These protocols are used industry wide, allowing StrideLinX to easily integrate into existing networks and support new installations.



Year to date

Fuel Level	Temp
89 %	172
91 %	148
99 %	39
89 %	82

Data Table

INFO

Title

Generator Info

Subtitle

COLUMNS

- Gen RPM
- Fuel Level
- Temp

+ ADD COLUMN

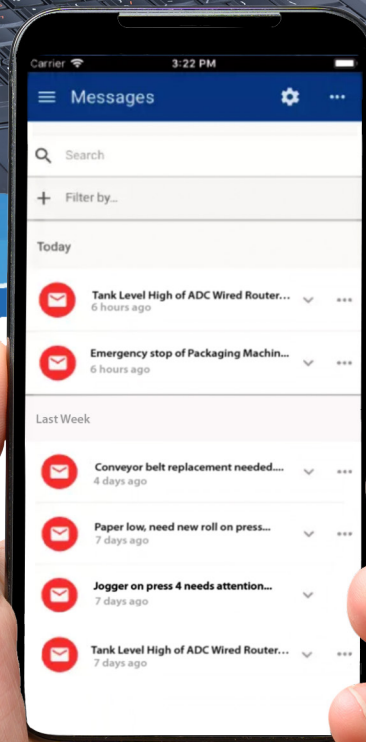
☐ Fill in empty cells with previously logged values

☒ Allow data export to CSV

Stay in the know with Cloud Notify

As a machine builder, system designer or anyone responsible for production equipment, you know how important staying in touch with your remote installations can be. StrideLinx takes remote access one step further by not only allowing you to access your remote systems, but also allowing these systems to contact you. For \$131.00/year, you can send alerts via email and push notification to anyone you choose, for any condition/information that you consider vital (SE-SL3011 or SE-SL3011-XX routers required for cloud notify).

**Cloud Notify license also included with Data Reporting/Logging license.*



Push notifications alert users to any condition in need of immediate attention.

Edit role

Name *
Day Manager

CREATED AS

Group-specific role
User has limited access, only to a specific group

ADMIN

Manage users ⓘ

DEVICES

Configure devices ☒

Services, pages and notifications linked to - Category A ☒

Services, pages and notifications linked to - Category B ☐

LOG IN

Enforce two factor authentication ⓘ

The Roles section of the Admin App allows you to configure which roles get notifications based on their assigned category level. These roles can then be assigned to users from within the Users section of the Portal App.

The StrideLinx Fleet Manager provides a convenient alarm configuration section where you can configure alarm names, limits, instructions and priority levels. You can also choose which access category to notify for each individual alarm.

StrideLinx



Use Cloud Notify to stay informed of:

- Production volume
- System alarms
- Raw material usage
- Energy consumption
- Maintenance needs
- Downtime duration
- Router status

Indicator01

Name *
Tank Level High

Severity *
High priority alarm

Condition *
Equal to

Threshold *
True

Over a period
2

Seconds

Instructions
Stop Supply Pump

Access category *

www.automationdirect.com/communications

StrideLinx Secure Client and Mobile App

Service, monitor, and troubleshoot remotely from multiple devices.

StrideLinx makes it easy to connect to your machine or system remotely. Whether you prefer to connect via your Windows computer, or if you need access on the go with mobile devices, StrideLinx has the secure connection option for you.

And don't forget the StrideLinx platform allows for unlimited users, unlimited concurrent client connections and unlimited mobile connections so you can grant access to anyone you choose without limitations. Remote access adds value to your bids and can be used as a service warranty revenue stream. With StrideLinx you get the options you need...for less!

INDUSTRY
4.0
IIoT



StrideLinx browser access provides quick VPN connections and access to the data you need. Easy-to-use data visualization provides clean dashboards with real-time or historical data. With over a dozen widgets, you can present your data in a variety of formats.

The FREE StrideLinx mobile app, for Android and iOS devices, allows you to get real-time system status on the go wherever you are. Available on Google Play or your Apple app store.



Secure VPN outbound connection



C-more
Headless HMI
priced at:
\$521.00
(EA9-RHMI)

Your PLC/HMI application installed
with a StrideLinx VPN secure router



StrideLinx

StrideLinx
Mobile App



The Mobile VPN feature allows 3rd party mobile apps, like the C-more app, to connect securely through the StrideLinx cloud to your remote system.

3rd Party
Mobile App



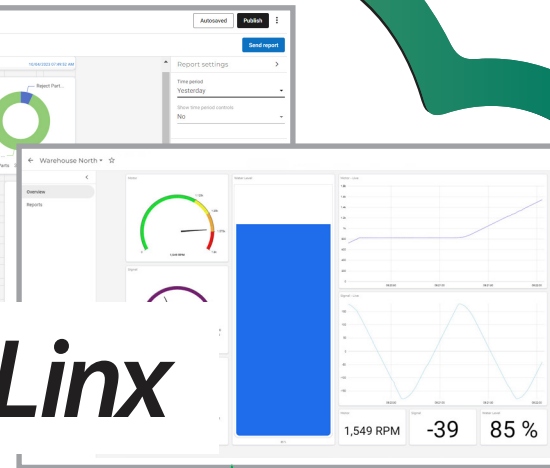
StrideLinx versatility allows data sharing with multiple platforms

Already have a cloud solution in place? With StrideLinx, that's no problem. StrideLinx supports data sharing directly from the StrideLinx router to several popular 3rd party MQTT brokers. Use low-cost StrideLinx routers to transmit your factory floor data to an established 3rd party platform where it can be processed, analyzed, visualized, and used in any way needed. Supported MQTT brokers include:

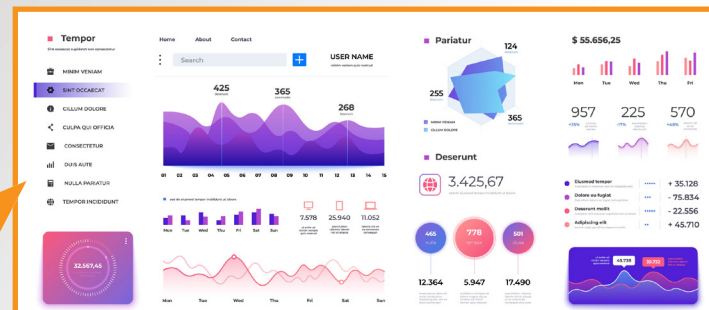
- Azure IoT Hub
- Azure Event Grid
- Amazon Web Services (AWS) IoT Core
- Eclipse Mosquitto broker
- Self-hosted solution
- Plus many more

**3rd party
cloud
platforms
supported**

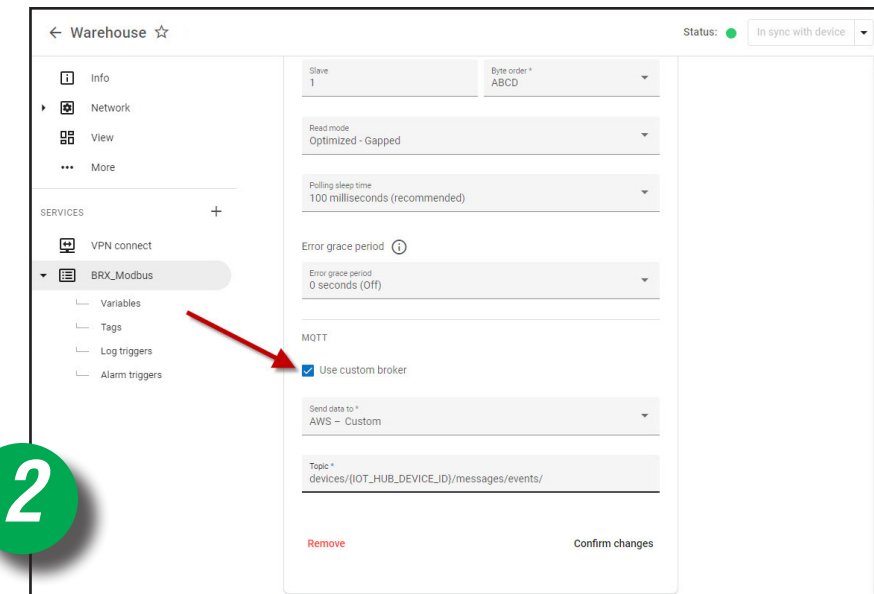
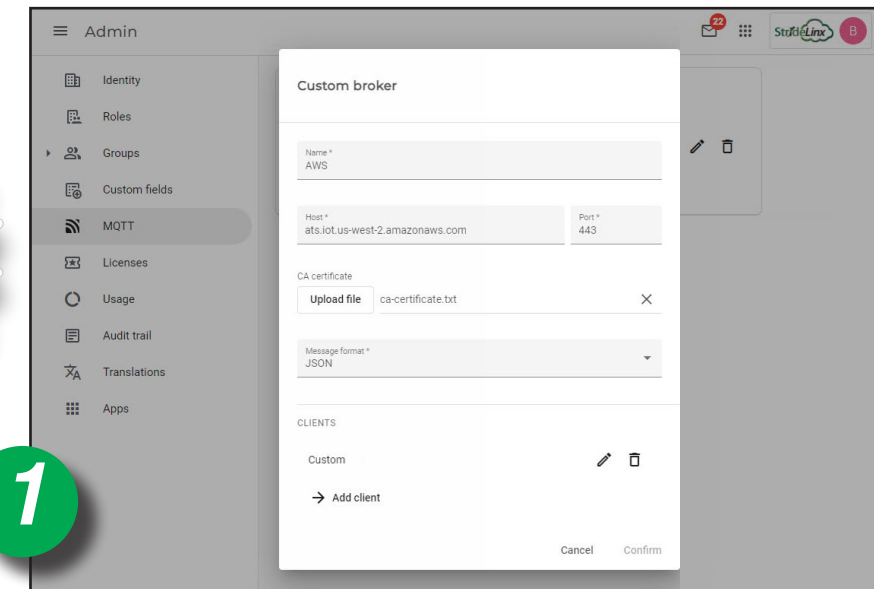
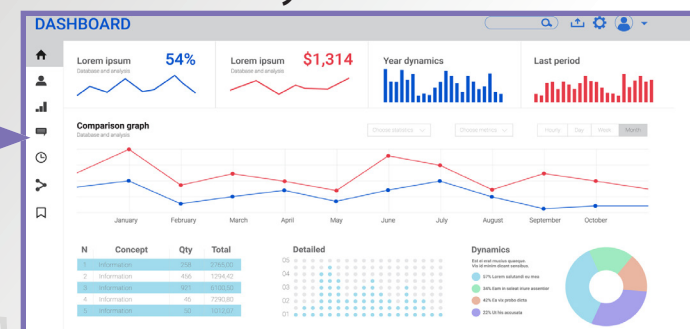
StrideLinx



3rd Party Cloud Platform



3rd Party Cloud Platform



Setup is easy with two simple steps!

1. Once the router is installed, set up an MQTT broker using the StrideLinx platform:
 - Add a custom broker from the platform's Admin > MQTT section and enter the requested information.
2. Configure the MQTT messages and frequency:
 - Select your device and data source from the Fleet Manager app in the StrideLinx platform and click the "Use custom broker" option.
 - Choose your preferred MQTT broker and client, and enter a topic.
 - Use the "Tags" section under your data source to set data logging frequency - on interval (every 100ms - 1h), when the value in the machine changes, or on custom triggers.
 - Push your changes to the router and you're all set!

**StrideLinx
Router
starting at
\$400.00
(SE-SL3001)**



How much money do you lose when servicing your machines? With secure remote access, the answer is NONE!

StrideLinX remote access allows you to securely connect with remote systems in an instant, troubleshooting and correcting issues without the hassles, delays and costs of traveling onsite.

Once installed and configured, The StrideLinX 10GB of FREE monthly bandwidth can be used to securely service your remote systems from anywhere, any time!



STRIDELINX IIoT/Remote Access Solution

Key Selling Points	1. Securely program and troubleshoot industrial controls equipment remotely 2. Additional services to enhance platform include data logging/reporting, notifications, custom branding	
Firewall/Router	✓ (secure VPN connection)	
Remote HMI/PLC Programming	✓	
Remote Control	✓ (control/monitor through webserver, VNC of industrial equipment)	
Data Reporting/Logging Subscription*	1K / 10K data points per hour w/ unlimited customized reports - for (1) StrideLinX router - (yearly renewal)	
Data Visualization*	✓ (customizable with numerous widgets)	
Data Logging Protocols*	Modbus TCP EtherNet/IP MELSEC	OPC-UA BACnet S7
Number of Connected Devices	Unlimited, Ethernet	
Platform Branding	✓ (Basic (free) and Premium)	
Alerts*	✓ (Additional license for unlimited alerts)	

* For StrideLinX system, feature available with routers SE-SL3011 and SE-SL3011-XX only.



How do I get started with StrideLinX?

1. Purchase your hardware

- Hard-wired (part #: SE-SL3001/SE-SL3011)
- WiFi (part #: SE-SL3011-WF) plus select necessary antenna
- Cellular* (part #: SE-SL3011- 4GG) plus select necessary antennas

* LTE cellular models require a SIM card ([Enabling Elements](#) AT&T SIM card included with router) and data plan; [click here](#) for information on Verizon data plans, [click here](#) for information on AT&T data plans or [click here](#) for information on T-Mobile data plans.

2. Set up your account and router configuration at [www.StrideLinX.com](#)

- Once your account has been setup, log in and open the Fleet Manager App
- Configure your router parameters by selecting Tools -> Start Configuration
- Follow the instructions and save the configuration file to the included USB (you received with router)

3. Activate your router

- Take the USB, with configuration file, and insert it into router. With the router powered up and USB inserted it will register itself on StrideLinX.com
- Go to your account on StrideLinX.com and open the Portal App or Fleet Manager App
- Look for the newly added router in the “Devices” list, name the device and click ACTIVATE

4. Establishing an end-to-end secure connection to your router from your PC

- Go to [www.StrideLinX.com](#)
- Install the VPN client from the Portal by clicking the “VPN client download”.
- Go to Devices -> Click CONNECT to secure your connection by VPN

5. Relax - you’re already set up

Add more users - you are in control of who accesses your router

At StrideLinX.com under *Portal > Users* (listed on the left navigation bar) you can add as many folks as you’d like. Just follow the simple on-screen instructions.

Go Mobile!

The FREE StrideLinX Portal mobile app, for Android and iOS devices, allows you to get real-time system status on the go wherever you are. Available on Google Play or Apple app store.

Want more services from your StrideLinX secure VPN router? It’s very easy to add some muscle to your setup.

Upgrade your StrideLinX experience with additional options (available options depend on router model and are purchased as activation codes from [www.automationdirect.com](#))

- Cloud Notify (not available with SE-SL3001): User alarm/notification when routers or process variables exceed limits.
- Cloud Data Reporting/Logging (not available with SE-SL3001): Live and historical data with reporting and customized data dashboards.
- StrideLinX Professional License: Make the StrideLinX platform yours with your corporate identity plus unlimited VPN data traffic and advanced user and device access management.
- Turn on added features by going to Admin > Licenses and entering activation code