



# Pilot Devices

CAPTRON

COMETPI

Fuji Electric

PATLITE®

Pfannenberg  
ELECTRO-TECHNOLOGY FOR INDUSTRY

SCHMERSAL

STAHL

WERMA  
SIGNALTECHNIK



Up-to-date price list:  
[www.automationdirect.com/pricelist](http://www.automationdirect.com/pricelist)

FREE Technical Support:  
[www.automationdirect.com/support](http://www.automationdirect.com/support)

FREE Videos:  
[www.automationdirect.com/videos](http://www.automationdirect.com/videos)

FREE Documentation:  
[www.automationdirect.com/documentation](http://www.automationdirect.com/documentation)

FREE CAD drawings:  
[www.automationdirect.com/cad](http://www.automationdirect.com/cad)





# Quality pilot devices at incredible prices . . .

## What are Control and Signaling Devices?

Control and signaling devices (also known as pilot devices) refer to components such as pushbuttons, indicator lights, selector switches, and visual and/or audible signaling devices. These are commonly used for automated processes and systems to control and monitor conditions for all types of equipment, processes, and machinery.

Pilot devices also provide crucial control and indication to provide a safe work area and to protect equipment. From emergency pushbuttons used to completely disable a machine, system, or process in an emergency to indicators that provide local or remote indication of hazards, warnings, or unsafe conditions, these devices play an essential role in industrial automation.

## Fuji Electric

### 16mm, 22mm, and 30mm Command Series pilot devices

Fuji Electric pilot devices feature a compact design that occupies less space than traditional devices and offers better layout and wiring, easier installation, and increased safety. We offer a full line of Fuji Electric 16mm, 22mm, and 30mm pilot devices, including:

- Illuminated and non-illuminated flush and extended pushbuttons
- Mushroom pushbuttons
- Emergency stop pushbuttons
- Selector switches
- Pilot lights
- Joystick selector switches
- Buzzers
- Accessories



### Cutler-Hammer 30mm NEMA HT800 series

We took advantage of the experience of Cutler-Hammer engineering to take existing product technology and make it better. We proudly offer you the HT8 series of 30mm pilot devices from Cutler-Hammer. (Cutler-Hammer parts are available for sale in North America only.)

- Flush, extended, illuminated or non-illuminated, mushroom and guarded pushbuttons
- Pilot lights and push-to-test models
- Selector switches in knob or lever versions
- NEMA 1, 2, 3, 3R, 4, 4X, 12 and 13 rated



### Cutler-Hammer E22 series 22mm non-metallic pushbuttons, switches, and indicators

Eaton Cutler-Hammer E22 series 22mm pushbuttons offer an array of functional, smartly-styled pilot devices including:

- Illuminated and non-illuminated flush and extended pushbuttons
- Mushroom pushbuttons
- Emergency stop pushbuttons
- Selector switches and key switches in a variety of styles
- LED and incandescent indicator lights
- Accessories

## SCHMERSAL 22mm IP69K Control and Signaling Devices

Schmersal N series 22mm IP69K devices are specifically designed for food processing, pharmaceutical, and medical applications where special cleaning requirements and cross-contamination prevention are required.

- Illuminated & non-illuminated extended, round momentary pushbuttons
- Momentary mushroom pushbuttons
- Push-to-lock, pull-to reset emergency stop pushbuttons
- LED Indicator lights
- Non-illuminated 2- and 3-position selector switches
- Plastic bases with plastic bezels
- IP67/69K protection rating



## SCHMERSAL 30mm IP65 Control and Signaling Devices

Schmersal E series 30mm IP65 devices provide simple operator controls and indication for industrial and commercial applications such as machine tools, industrial machinery, control panels, distribution panels, instrumentation panels, and more..

- Illuminated & non-illuminated flush, round momentary pushbuttons
- Momentary mushroom pushbuttons with 40mm or 50mm operators
- Push-lock pull-reset and twist-to-release emergency stop pushbuttons
- Non-illuminated 2- and 3-position selector switches
- 2- and 3-position key switches with key removable in various positions
- Round and dome LED indicating lights
- Plastic bases with metal bezels

## SCHMERSAL Non-Illuminated 22mm IP69K Joystick Selector Switches

Schmersal joystick selector switches are designed for food processing, pharmaceutical, and medical applications and comply with the food and beverage requirements to prevent cross-contamination in machines. The IP69K rating also makes them suitable for marine applications, traffic systems, commercial vehicles, and for dusty and dirty environments.

- Available in blue or gray
- 2- and 4-position momentary action with spring return to center
- Models available with 2 or 4 N.O. contacts
- Plastic bases with plastic bezels
- IP65/67/69/69K protection rating



## SCHMERSAL Contact Blocks and Light Terminal Blocks

Contact and light terminal blocks are designed for low voltage applications and include a self-cleaning bridge system known as Elan four-way system.

- Quality construction provides high shock and vibration resistance
- Contact blocks available in various NO/NC configurations
- Light terminal blocks available in various colors & voltages

## COMPEPI Precision, Durability, and Performance at Unbelievable Prices

Comepi pilot devices deliver high-performance control solutions designed to optimize machine operations, safety, and efficiency for demanding industrial environments. Single-function, multi-function, and Emergency Stop (E-Stop) control station configurations are available to meet the diverse needs of industrial automation, machinery control, and safety applications.

The M12 quick-connect control stations provide fast and tool-free installations, while reducing wiring complexity and improving system efficiency.

Individual Comepi pilot devices include pushbuttons, selector switches, and e-stop pushbuttons, and provide extreme value by combining low cost with dependable performance for any installation.

### Comepi Start/Stop Combo and E-Stop Control Stations

The SB series control stations have an attractive modern look with a solid polycarbonate fiberglass reinforced construction and offer various ready-to-use pushbutton and switch configurations to best fit your application.

- Rugged construction provides high impact resistance for long-lasting performance
- Various ready-to-install pre-assembled configurations save installation time, costs, and increase operation efficiency
- IP65 rated superior protection provides dust-tight seals and water jet resistance ideal for harsh environments

- Double insulation (Class II insulation) enhances safety features and reduces failure risks
- Configurations include maintained, momentary, and key operated devices
- Ergonomic design ensures effortless operation and precise control
- Stations available with M12 quick-connect connectors for plug-and-play connectivity with industrial automation systems

Starting at  
**\$22.00**  
(SB114-081-G)



Starting at  
**\$31.00**  
(SB115-012-G)

The SB series Emergency Stop (E-Stop) combo stations are designed to optimize machine operation, safety, and efficiency in harsh environments.

#### Same features as above

- Various N.C./N.O. contact configurations for operation flexibility
- Mushroom head with twist-to-release action prevents accidental activation

- Guarded and padlockable versions are available for added safety and applications requiring LOCKOUT/TAGOUT procedures

### Comepi SB Series Enclosures - Build Your Own Station

Comepi SB series enclosures allow you to configure your own rugged control station with our selection of compatible Comepi pilot devices. These enclosures are an ideal complement for any system needing high quality human-machine interfaces. SB series enclosures have been designed for harsh environments, featuring a gasketed design for a protection degree as high as IP67 and IP69K. Their modern and elegant look, plus structural and use strength, place them above the competition.

- IP67/IP69K rated protection for harsh environments (appropriate pilot devices must be used to maintain rating)

- Double insulation (Class II insulation) enhances safety features and reduces failure risks
- 22m hole configuration options with up to four holes

Starting at  
**\$13.00**  
(SB114)



### Comepi 22mm Pushbutton and Selector Switch Operators

The 22mm ECX series of pushbutton and selector switch command-and-control operators consist of a thermoplastic body with threads and threaded ring for fast, easy, and secure assembly. All ECX series actuators require specific contact blocks and mounting flanges.

- Pushbutton operators in white, red, black, green, or blue colors
- Pushbutton operators with momentary or maintained action
- 2- or 3-position selector switch operators with maintained action and a knob or key-operated operators

- Superior IP65 rated protection provides dust-tight seals and water jet resistance making them ideal for harsh environments
- Pushbutton operators with text on face including START, STOP, RESET, O, I, II, up arrow, and down arrow
- Mushroom head emergency stop operator with twist-to-release action

Starting at  
**\$3.00**  
(ECX4111)



Starting at  
**\$2.00**  
(ECX4029-2)



### Comepi 22mm Contact Blocks and Mounting Flanges

Comepi 22mm contact blocks and mounting flanges are designed to complete the installation of Comepi pushbutton and selector switch operators. Once the operator is installed, the mounting flange slides over the operator base and with a slight push it locks firmly onto the base. Once attached, the mounting flange provides a quick way to mount the contact block by clipping the contact block to the mount.

- Contact blocks available with N.O. or N.C. contacts
- Contact blocks are installed in lateral position to the support base and a maximum of two contact blocks can be stacked on each position
- Rated e / AC-15 operational voltages up to 400VAC - 50/60Hz
- Rated Le / DC-13 operational voltages up to 250 VDC
- Connecting terminals consist of screw connections with captive 1 or 2 conductor cable clamps

### AutomationDirect by Comepi 22mm Plastic Indicator Lights

The 22mm ECX series of incandescent and LED plastic indicator lights consist of a monoblock design for easy mounting, and include a key on the body that prevents rotation when mounted.

- Available in six colors
- 24V and 120V models
- Incandescent models accept LED replacements (may have to remove the frosted diffuser for enhanced illumination)

- Side wire entry with back screw terminals for easy wiring and maintenance
- IP20 rated before installation
- IP65 rated after installation

Starting at  
**\$6.25**  
(ECX2053-24L)

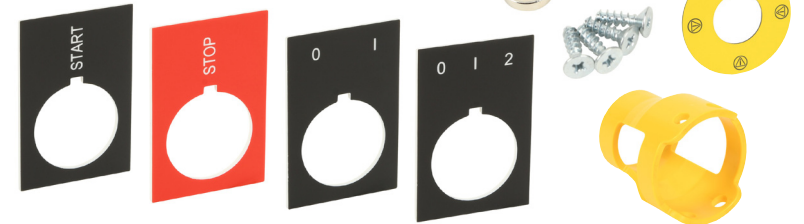


### Comepi ECX Series Pushbuttons and Selector Switches Accessories

Accessories that complement and enhance ECX series 22mm pushbuttons and selector switches, and SB series control stations installations include:

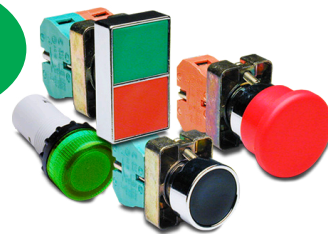
- Mounting magnets for SB control stations for quick and/or temporary installations on metal cabinets or enclosures
- Legend plates with engraved text for easy pushbutton or selector switch purpose identification. Available engravings include START, STOP, 0-1, 0-1-2, EMERGENCY STOP, and caution logos

- Yellow guard for SB series emergency stop installations, prevents accidental reset and allows LOCKOUT/TAGOUT



Starting at  
**\$2.00**  
(ECX1608)

Starting at  
**\$2.50**  
(GCX3112-5C)



### AutomationDirect by Comepi GCX series 22mm metal and plastic pilot devices

The GCX series is a complete line of economical 22mm pilot devices including:

- Illuminated and non-illuminated momentary and maintained pushbuttons
- Emergency stop buttons
- Rotary selector switches in popular configurations
- LED indicator lights

### AutomationDirect by Comepi GCX Series Accessories

Accessories for GCX series 22mm pushbuttons and selector switches include: (Some GCX series accessories can be used with ECX series)

- Replacement incandescent and LED bulbs
- Hole plugs
- Pilot light replacement lenses in various colors
- Pushbutton replacement covers
- Replacement 22mm support base

- Replacement contact blocks in various N.C./N.O. configurations
- Legend plates
- Two and three position short lever operators
- Replacement operators



Starting at  
**\$1.75**  
(ECX3029-2)





# CAPTRON Capacitive Pushbutton Switches and Indicators

Captron capacitive switches offer the latest technology for pushbuttons and switches. These capacitive pushbuttons are activated by the inherent capacitance of the human body. The capacitance increases when

a person touches the button, causing it to switch. The pushbuttons have a fixed sensing distance which may vary with approach speed or damping factor (size of the body part touching the switch).

Features:

- Touch control - easy to use, no pressure required, no moving parts
- Durable service life - over 100 million switching cycles
- IP69K-rated - 100% water-proof and oil-proof, perfect for areas requiring sanitary conditions such as Food and Beverage, medical, and pharmaceutical applications
- Shock-resistant and vandal-proof - resists lighter flames and severe blows
- IO-Link v1.1 on select models
- Static, dynamic, and toggle switch types
- Automatic, semi-automatic, and manual LED control modes

Switch Action:

- Static (momentary action): the output signal is continuously on as long as the sensor area is activated
- Dynamic (one-shot action): the output signal length is limited (typically 300ms) when the sensor area is activated
- Toggle (push-on/push-off action): the output signal turns on when the sensor area is activated and stays on until the sensor area is activated again

LED Control Modes:

- Semi-automatic: LED1 is controlled separately while LED2 lights up when the operating surface is touched; ideal for prompting an operator to activate the switch
- Manual: LED1 and LED2 can be controlled separately for optical feedback like a signal indicator
- Automatic: LED1 is ON and LED2 is OFF when the button is not touched; LED1 is OFF and LED2 is ON while the button is pressed



Starting at  
\$118.00  
(CHT3-15XP-H-TGSR)

CHT Series Capacitive Switches

Captron CHT series capacitive switches in 22mm, 50mm, and 60mm barrel sizes provide a variety of switching options with touch surfaces up to 2.48" in diameter.

- Automatic, semi-automatic, and manual LED control options
- Static, dynamic, and toggle switch types
- PNP-N.O. output
- Available in a variety of operator text/image options

Caneo Series10 Capacitive Switches

Captron Caneo Series10 standard, stainless steel, and hygienic EHEDG-certified capacitive switches are IO-Link v1.1 compatible, available in a variety of operator text/image options, and suitable for a wide range of applications.

Starting at  
\$59.00  
(CS10KMLDT-C10-00A6)



Standard capacitive switches with four lateral spotlights provide 360° visibility to help keep operators informed



Robust stainless steel capacitive switches, fully molded in special resin, cannot be destroyed by strong blows



Hygienic EHEDG-certified capacitive switches meet FDA requirements, making them ideal for industries such as food and beverage or medicine and pharmaceutical sectors



Starting at  
\$142.00  
(CS41KCRBK-P10-01E7)

Caneo Series41 Flange-Mount Capacitive Switches

Captron Caneo Series41 standard and display type flange-mount capacitive switches are available in a variety of configurations to relay important status information. Models with the display option feature a 7-segment display for customizable messages up to four characters long.

- Automatic, semi-automatic, and manual LED control options
- IO-Link v1.1 compatible
- Dynamic switch type
- Configurable LED ring
- Available in a variety of operator text/image options
- Polycarbonate housing and switch surface



Caneo Series40 Puck-Style Capacitive Switches

Captron Caneo Series40 puck-style standard and display type capacitive switches offer the same reliable performance as the Series41 in a compact, encapsulated polycarbonate housing. Their standard 22mm mounting provides a low-cost solution to quickly and easily retrofit and modernize aging installations.

- Automatic and semi-automatic LED control options
- IO-Link v1.1 compatible
- Static and dynamic switch types
- Configurable LED ring
- 7-segment display option allows customizable messages up to four characters long



Starting at  
\$159.00  
(CS40KMSBN-P20-063A)



Starting at  
\$254.00  
(CD41AARBK-P20-0256)

Caneo Series41 Solid Capacitive Switches with Terminal Base

Captron Caneo Series41 solid capacitive switches with display combine a flange-mount capacitive switch with a sturdy enclosed aluminum terminal base that can withstand the harshest of environments. These switches feature an ergonomic design for ease of use and a robust construction for long-lasting, reliable performance.

- Automatic LED control
- IO-Link v1.1 compatible
- Dynamic switch type
- Configurable LED ring
- 7-segment display for customizable messages up to four characters long



CDL / CML Series 22mm LED Indicating Lights

Captron CDL / CML series 22mm LED signal indicator lights offer a 20mm diameter illuminated area and are available with aluminum or stainless steel bezels and impact-resistant housings. The CDL series provides selectable green or red illumination, while the CML series offers seven color options: red, yellow, green, blue, white, orange, and violet.

- 24 VDC operating voltage
- Long service life up to 100,000 hours
- Waterproof, oil-resistant, and vandalism-proof
- IP69K protection rating

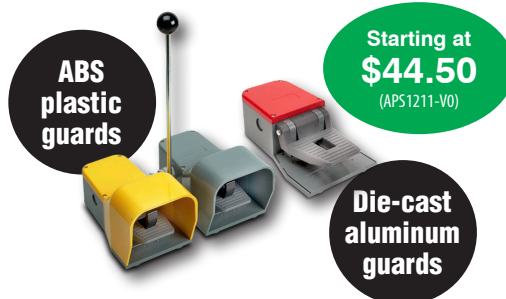


Starting at  
\$48.00  
(CDL1-159-30-GR)



## AutomationDirect Double/Single Foot Switches

AutomationDirect electric foot switches house a pedal actuator that operates an electrical circuit when the pedal is pressed. Single- or double-pedal foot switches with guards offer a selection of operating configurations. They are available in free movement momentary or maintained, and momentary safety anti-trip actions.



## IDEM Emergency Stop Control Stations

IDEM E-stop control stations are plastic or IP69K stainless steel housings that enclose large mushroom head pushbuttons for emergency protection of machinery and personnel when potentially harmful conditions occur. Models with LED indicator and protection guards are available.



## Eaton Start/Stop Combo Control Station

The Eaton start/stop combo control station is a reliable, low-cost solution for the simple operation of discrete control elements. The control station is a preassembled unit with enclosure, 22mm-mounted START and STOP push-buttons, and their operating contacts.



## KILLARK® Hazardous Location Control Stations

Killark hazardous location pilot devices include control stations that contain and extinguish explosions, and prevent the igniting of external hazardous atmospheres by the enclosed arcing device. Models in a variety of pushbutton, pilot light, and switch configurations, in sealed or unsealed assemblies, meet Class I and II, Div 1 & 2 requirements.

Assemblies: factory sealed and unsealed models available

- Pushbutton control stations
- Pilot light control stations
- Pushbutton/pilot light combo control stations
- Selector switch control stations
- Mushroom pushbutton control stations
- Device/splice boxes
- Accessories and more

## Molex Pendant Switches

Molex pushbutton pendants are ergonomically designed hand-held control switches for direct line-of-sight operation in production, material handling, changeovers, cleaning, and troubleshooting applications. Rubber switch covers make these devices ideal for demanding environments.

- Manually-operated switches with a variety of snap-action contact output arrangements (N.O., N.C.)
- Standard 7/8in - 16 UNC2 connector for quick installation or replacement (cables sold separately)
- Nitrile/PVC rubber or silicone rubber switch cover options
- Nitrile/PVC rubber uniquely suited to withstand chemical exposure in the petrochemical environment
- Silicone rubber/PVC repels and inhibits bacterial growth and is ideal for any indoor or outdoor wet location, such as in food and beverage processing



## Stacklights

Stacklights, called signal towers, are modular, stackable devices that provide illuminated and audible status indication for machines, systems,

or processes. They are available in a variety of colors; in flashing or permanent incandescent, LED, or Xenon lighting; and with audible alarm options.



## WERMA eSIGN Series LED Signal Towers

WERMA eSIGN series signal towers provide full-surface signaling with a variety of programmable signal modes. The electronic modularity of these towers provides various colors, brightness levels, and light effects, from the classic signal tower to completely customized settings. The eSIGN signal towers can also switch with ease between variable filling level indications and full-surface signaling.

- Available with 9 or 15 tiers
- Versatile customization options with different modes, light effects, and tones
- Configurable via USB and the free configuration software, or IO-link on compatible models
- 360-degree viewing angle
- Optional wall and tube mounting options
- IO-Link v1.1 on select models
- Black or white housing options

### Applications

- Access control
- Audible warning
- Building security
- Fault indication
- Filling level indication
- Material availability
- Operating status
- Process monitoring
- Status indication
- Visual warning

## Configuration Options (all models)

### Standard Colors

- Red
- Yellow
- Green
- White
- Blue
- Light yellow
- Violet
- Turquoise

### Light Effects

- Continuous light
- Blinking 1 Hz
- Blinking 2 Hz
- Blinking 3 Hz
- Flashing 1x
- Flashing 2x
- Flashing 3x
- Rotating

### RGB Color Selection Options



### Audible Selections (depending on model)

- 2.7 kHz continuous tone
- 0.9 kHz continuous tone
- 2.8 kHz at 420 Hz pulse frequency
- 0.9 kHz at 20 Hz pulse frequency
- 2.8 kHz at 20 Hz pulse frequency
- 0.9 kHz at 1Hz pulse frequency
- 2.8 kHz at 1Hz pulse frequency
- 2.3 to 3.6 kHz sweep tone
- 2.6 kHz continuous tone
- 1200/800 Hz alternating tone

### Operating Modes

- Autoscale
- Signal Tower
- Filling Level
- Individual



## Stacklights (cont)

### Operating Modes (all models)

#### Autoscale Mode

In autoscale mode, the eSIGN segments are divided equally by the number of active status warnings. If only one status warning is active, the entire signal tower is illuminated in one color for maximum visibility.



#### Signal Tower Mode

In signal tower mode, eSIGN segments are combined to create a classic signal tower. Individual tiers are assigned fixed positions that are turned ON when their corresponding status bit is active.



#### Filling Level Mode

Filling level mode accurately indicates job progress or material availability as a percentage, gradually illuminating the signal tower from bottom to top or top to bottom.



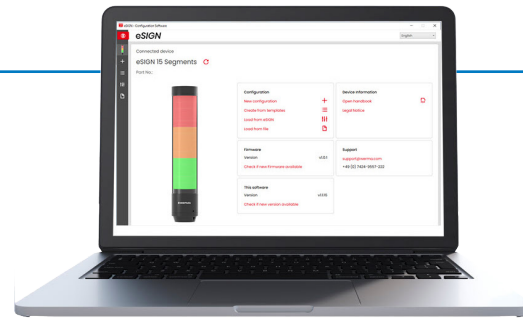
#### Individual Mode

All tiers, colors, light effects, and sounds are configured independently for each signal tower state in individual mode. Each signal tower state is selected based on the combination of active status inputs, allowing for a maximum of 64 possible states.



### Software Configurable Models

- Requires WERMA eSIGN configuration software (free download)
- USB-C programming interface
- Operation by hard-wired discrete inputs
- Standalone units do not require a PLC interface
- Software configured models do not support IO-Link



WERMA eSIGN Configuration Software

### IO-Link Models

- An external IO-Link Master is required for operation and configuration
- Operating modes, lighting effects, colors, and sounds can be changed on the fly
- No hard-wired I/O
- Requires extensive knowledge of IO-Link protocol and IO-Link Master and gateway devices



**PLC**  
Sends commands and status requests via EtherNet/IP



**IO-Link Master**  
Converts EtherNet/IP to IO-Link communication protocol



**eSIGN Signal Tower**  
Operating in Filling Mode

### **PATLITE®** 25mm ME/MES Series

Patlite® 25mm ME/MES series high-quality signal towers are designed with direct-mounted, rust-free aluminum bodies.

- Super slim design for easy fit in tight spaces
- 1 to 4 LED tiers
- PNP models IP65, NPN models IP42



Starting at  
**\$103.00**  
(MES-102A-R)



Starting at  
**\$103.00**  
(MPS-102-R)

### **PATLITE®** 30mm MP/MPS Series

Patlite® 30mm MP/MPS series signal towers feature a direct-mounted, double-insulated ABS main body design that offers superior impact and heat resistance.

- IP65 rated (IEC 60529)
- 1 to 4 LED tiers
- Optional alarm buzzer available

### **PATLITE®** 40mm LR4 Series

Patlite LR4 series tower lights offer a rugged construction for superior impact and heat resistance, and a modular "Twist and Lock" system to easily customize and reconfigure the LED and sound modules.

- 2, 3, and 4 tiers (LED modules)
- Prism-cut lens design for enhanced visibility from any direction
- Optional alarm module with selectable sound patterns
- Direct or pole mount installation
- Interchangeable LED modules require no re-wiring, even after installation



Starting at  
**\$83.00**  
(LR4-202WJNW-RG)



Stacklights (cont)

PATLITE® 70mm LS7 Series

Patlite® LS7 series 70mm signal towers offer an attractive smooth body design with no screws or metal parts exposed, excellent for harsh environments and areas where high pressure/temperature washdowns are required.

- Available in 3 or 5 LED tiers
- Models with buzzer available
- IP65 rated; models with buzzer are IP54 rated; WC9 models are IP69k rated



Starting at  
\$180.00  
(LS7-302DWC-RYGN)

WERMA SIGNALTECHNIK KombiSIGN Pre-assembled Stacklights

Pre-assembled stacklights are available in 2- or 3-light element configurations, made with polycarbonate lens material and LED permanent light elements.

- Available in 24 VAC/VDC or 115 VAC
- IP65 rated
- 70mm diameter

Starting at  
\$159.00  
(64924004)



Starting at  
\$235.00  
(HSST-3M2-RYG)

PATLITE® HSST Series Andon Signal Tower Stations

Patlite HSST series Andon signal tower stations offer a complete, low-cost solution to manually control the signal tower colors via a three-button switch box and power adapter.

- Three-tier light with red, amber, and green modules
- Three-button switch box and power adapter included
- IP54 (signal tower) and IP20 (switch box) protection rating

PATLITE® LKEH Series - 100mm Combination Large Light Tower and Horn

Patlite LKEH series 100mm LED signal towers feature a large signal horn and light tower combination, ultra-bright LEDs with a 100mm lens, and an alarm volume up to 105 dB.

- Ultra-bright continuous or flashing LEDs
- 32 alarm tones
- 1 to 4 LED tiers (modules)
- Optional field configuration SD card (sold separately)



Starting at  
\$497.00  
(LKEH-102FEUL-R)



Starting at  
\$23.50  
(84610000)

WERMA SIGNALTECHNIK KombiSIGN Modular 50mm and 70mm Signal Towers

WERMA's modular signal towers offer total flexibility, allowing any combination of up to four (50mm) or five (70mm) audible-visual and audible signal elements. The bayonet mechanism allows elements to be quickly and safely changed without tools (contact-voltage proof).

- Up to 4 (50mm) or 5 (70mm) incandescent, LED, or Xenon light elements
- Permanent, blinking, or flashing light functions
- Light elements available in red, green, amber, white, and blue
- Audible buzzer or siren elements
- IP65 rated components

WERMA SIGNALTECHNIK FlatSIGN Series LED Signal Columns

WERMA's FlatSIGN LED signal column is a wall-mounted signal unit that provides visual alarm notifications for machines, systems, and/or process alarms.

- Tri-color signal light for wall mount installation
- Audible alert option with 8 selectable tones or continuous tone
- Red/yellow/green LEDs
- 160-degree viewing angle
- Permanent or blinking (DIP switch selectable) models

Starting at  
\$155.00  
(69110055)





# PATLITE® Visual Signaling Beacons

Visual signaling devices provide alarm and status notifications for industrial and commercial processes, and are available in various colors, diameters, lighting effects, and mounting styles.

## NE-A Series Monocolor Signal Beacons

Patlite NE-A series monocolor signal beacons are compact and reliable devices ideal for a variety of signaling applications. Their newly developed reflector evenly distributes light for clear indication. They feature a high protection rating and are suitable for harsh environments.

- Red, amber, green, blue, and white LED color options
- Continuous light function
- IP65, NEMA 4X/13 protection rating
- Base, tube, bracket, pole, and wall mounting options (accessories purchased separately)
- 56mm beacon diameter



Starting at  
**\$33.00**  
(NF-24A-R)

## NE-A Series Multi-Color Signal Beacons

Patlite NE-A series multi-color signal beacons feature customizable color selection, lighting functions, and audible alarms. These versatile and energy efficient beacons provide clear visual communication for various industrial environments. These durable and long-lasting beacons are ideal for challenging environments and demanding applications.



Starting at  
**\$71.00**  
(NE-M1ANN-M)

Seven selectable LED color options in a single unit

- Red, amber, green, blue, white, cyan, and purple selectable LED colors
- 56mm beacon diameter
- Permanent/flashing selectable light functions
- NE-M1ATB-M offers capacitive touch acknowledge with open collector NPN output
- Select models include selectable continuous/intermittent audible alarm
- Simultaneously continuous, flashing, and audible alarm conditions
- IP65 or IP67, NEMA 4X/13 or IP67/69K (depending on model)
- Mounting accessories sold separately

## SF Series Multi-Function Monocolor Signal Beacons

Patlite SF series multi-function monocolor signal beacons have a reflector designed to distribute light for clear, unambiguous indication.

- Red, amber, green, and blue LED color options
- Fresnel lens distributes ambient, uniform light from all globe surfaces, including top
- IP23 (IP65 with optional gasket), and IP66 for M1KT/M2KT versions for harsh environments
- (22) selectable light patterns including simulated rotation, flashing, and pulsing types



Starting at  
**\$89.00**  
(SKS-M1J-B)

## SK Series Rotating Monocolor Signal Beacons

Patlite SK series rotating monocolor signal beacons have a rotating reflector mounted on steel ball bearings to greatly reduce wear over time.

- Red, amber, and blue LED color options
- 120 rpm rotating light
- IP23 (IP65 with optional gasket) for harsh environments



Starting at  
**\$144.00**  
(SF08-M1JN-B)

## SL Series Flashing Monocolor Signal Beacons

Patlite SL series flashing monocolor signal beacons have a wider light-emitting surface with over 5 times the luminous intensity of competing products.

- Red, amber, green, and blue LED color options
- Fresnel lens distributes ambient, uniform light from all globe surfaces, including top
- IP23 (IP65 with optional gasket), and IP66 for M1KT/M2KT versions for harsh environments
- Selectable continuous blinking or triple flash light patterns



Starting at  
**\$98.00**  
(SL08-M1JN-B)



# Visual Signaling Beacons



## PYRA PY XS-05 Series Xenon Signal Beacons 109 x 86 x 80 mm

Pfannenberg PYRA PY XS-05 series signal beacons feature Pfannenberg's xenon flash technology with high flash energy and long service life. They offer 5 joules of flash energy, 50cd light intensity, and 164m [538ft] max viewing distance.

- Xenon tube flashing strobe
- 1 Hz flash frequency
- 8,000,000 flash service life
- Polycarbonate/ABS blend, impact-proof housing
- 92-127 VAC or 18-30 VDC operating voltages
- Suitable for indoor and outdoor use
- NEMA 4/4X, IK08, IP66 protection rating
- 10-year warranty



Starting at  
**\$178.00**  
(21510151000)



Starting at  
**\$247.00**  
(21551151000)

## PYRA PY X-M-10 Series Xenon Signal Beacons 166 x 114 x 134 mm

Pfannenberg PYRA PY X-M-10 series signal beacons feature Pfannenberg's xenon flash technology with high flash energy and long service life. They offer 10 joules of flash energy, 149cd light intensity, and 283m [928ft] max viewing distance.

- Xenon tube flashing strobe
- Four DIP switch selectable flash rates
- Full flash synchronization on multi-light systems
- Inrush current limit and undervoltage detection
- Polycarbonate/ABS blend, impact-proof housing
- 90-135 VAC or 10-57 VDC operating voltages
- Suitable for indoor and outdoor use
- NEMA 4/4X, IK08, IP66 protection rating
- 10-year warranty

## PYRA PY X-L-15 Series Xenon Signal Beacons 212 x 144 x 157 mm

Pfannenberg PYRA PY X-L-15 series signal beacons feature Pfannenberg's xenon flash technology with high flash energy and long service life. They offer 15 joules of flash energy, 190cd light intensity, and 320m [1050ft] max viewing distance.

- Xenon tube flashing strobe
- Selectable flash frequency (6-60 flashes per minute)
- Full flash synchronization on multi-light systems
- Polycarbonate/ABS blend, impact-proof housing
- Large visual coverage area
- 90-135 VAC or 18-30 VDC operating voltages
- Suitable for indoor and outdoor use
- NEMA 4/4X, IK08, IP66 protection rating
- 10-year warranty



Starting at  
**\$299.00**  
(21561151000)



Starting at  
**\$308.00**  
(21553648055)

## PYRA PY L-M-RGB Series LED Signal Beacons 166 x 114 x 124 mm

Pfannenberg PYRA PY L-M-RGB series LED beacons are visual signaling devices for industrial, commercial, and construction applications. They offer selectable signaling modes, 23cd light intensity, and 111m [364ft] max viewing distance.

- RGB multi-color LED with a wide signaling area
- Permanent, blinking, or flashing signal modes
- Remote color and signal mode selection
- Adjustable brightness
- Polycarbonate/ABS blend housing
- 90-265 VAC or 10-60 VDC operating voltages
- Suitable for indoor and outdoor use
- NEMA 4/4X, IP66 protection rating
- 10-year warranty





# Visual Signaling Beacons

## Installation Beacons

WERMA installation beacons are designed for mounting in panels or enclosures in 22.5 or 34mm cutouts.

- Incandescent, LED, or Xenon bulb types
- Permanent, blinking, flashing, or rotating light functions
- High protection rating IP65
- 29, 57/58, and 75 mm beacon diameters
- 360° visibility
- Five colors



## Freestanding Beacons

Choose from a variety of mounting and signaling options with freestanding beacons.

- Base, bracket, or tube mounting
- Incandescent bulb type
- Permanent light function
- High protection rating IP65
- 57/58/75/98 mm beacon diameters
- Tall lens option on select models
- 360° visibility
- Five colors



# Visual Signaling - Traffic Lights



## PYRA PY L-S-TL Series LED Traffic Lights

Pfannenberg PYRA PY L-S-TL series LED traffic lights signal hazardous conditions for industrial, commercial, and construction applications. They are available in 2- or 3-tier models with selectable signal modes and blink/flash frequencies

- Permanent, blinking, or flashing signal modes
- Polycarbonate/ABS blend housing
- 95-265 VAC or 10-60 VDC operating voltages
- Suitable for indoor and outdoor use
- NEMA 4/4X, IK08, IP66 protection rating
- 10-year warranty



# PATLITE® Audible-Visual Signaling Beacons

## SF Series Multi-Function Audible-Visual Monocolor Signal Beacons

Patlite SF series multi-function monocolor signal beacons have a reflector designed to distribute light for clear, unambiguous indication.

- Red, amber, green, and blue LED color options
- IP23 (IP65 with optional gasket), and IP66 for M1KT/M2KT versions for harsh environments
- Audible 88dB buzzer
- Fresnel lens distributes ambient, uniform light from all globe surfaces, including top
- (22) selectable light patterns including simulated rotation, flashing, and pulsing types

Starting at  
**\$157.00**  
(SF08-M1KT8-B)



Starting at  
**\$117.00**  
(SKH-M1JB-B)

## SK Series Rotating Monocolor Signal Beacons

Patlite SK series rotating monocolor signal beacons have a rotating reflector mounted on steel ball bearings to greatly reduce wear over time.

- Red, amber, and blue LED color options
- IP23 (IP65 with optional gasket) for harsh environments
- 120 rpm rotating light
- Audible 88dB buzzer

## SL Series Flashing Monocolor Signal Beacons

Patlite SL series flashing monocolor signal beacons have a wider light-emitting surface with over 5 times the luminous intensity of competing products.

- Red, amber, green, and blue LED color options
- IP23 (IP65 with optional gasket), and IP66 for M1KT/M2KT versions for harsh environments
- Audible 88dB buzzer
- Fresnel lens distributes ambient, uniform light from all globe surfaces, including top
- Selectable continuous blinking or triple flash light patterns

Starting at  
**\$112.00**  
(SL08-M1KT8-B)



# Multi-Color IO-Link Compatible Audible-Visual Signaling Beacons

Seven selectable LED color options in a single unit



Patlite NE-IL series signal beacons are a compact and versatile line designed for industrial automation and process control applications. They offer bright LED lights in selectable colors, a variety of lighting functions and audible alarms, and models with capacitive touch sensors for real-time status confirmation.

- Red, amber, green, blue, white, cyan, and purple selectable LED colors
- Permanent, flashing, double flash, triple flash, and rotating selectable light functions
- Eight selectable audible alarm tones (88 dB) on select models
- IP65 or IP67, NEMA 4X/13 or IP67/69K (depending on model)
- 56mm beacon diameter
- Select models offer capacitive touch to acknowledge function
- Simultaneously use continuous, flashing, and audible alarm conditions
- Base, tube, bracket, pole, and wall mounting options (accessories purchased separately)
- IO-Link v1.1 compatible

Starting at  
**\$102.00**  
(NE-ILNN-M)

These signal beacons feature IO-Link compatibility for integration into industrial control systems requiring remote monitoring and control. IO-Link functions include:

- An external IO-Link master is required for operation and configuration
- Remotely change the color of the signal beacon to indicate different machine states
- Monitor the operating temperature of the signal beacon to prevent overheating
- Receive a notification if the signal beacon fails
- Configure the flash pattern of the signal beacon to match the specific needs of the application
- Adjust the brightness of the signal beacon to make it more visible in different lighting conditions



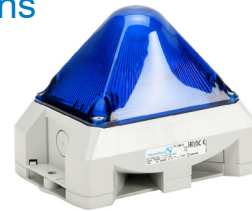
## Audible-Visual Signaling Beacons



### PYRA PY X-MA-10 Series Xenon Audible-Visual Signal Beacons 166 x 114 x 124 mm

Pfannenberg PYRA PY X-MA-10 series audible-visual signal beacons announce hazardous conditions for industrial, commercial, and construction applications. They offer eight selectable tones and four DIP switch selectable flash rates.

- 101 dB at 1m audible output
- Large signaling range
- Inrush current limit and undervoltage detection
- Full synchronization of multi-light flashing systems
- Separate light and sound control
- Polycarbonate/ABS blend housing
- 90-135 VAC or 10-57 VDC operating voltages
- Suitable for indoor and outdoor use
- IP66 protection rating



Starting at  
**\$337.00**  
(21555154055)



Starting at  
**\$360.00**  
(21556648055)

### PYRA PY L-MA-RGB Series LED Audible-Visual Signal Beacons 166 x 114 x 134 mm

Pfannenberg PYRA PY L-MA-RGB series audible-visual signal beacons offer flexible, color changing LED technology with selectable signal modes combined with a 101 dB omnidirectional audible alarm. This signaling device offers a 180° x 360° visible field, operates in harsh environments, and can be surface, top, or wall mounted.

- 101 dB at 1m audible output
- Multiple colors with one LED light
- Permanent, blinking, and flashing signal modes
- Adjustable volume and brightness
- Separate light and sound control
- Flame retardant plastic housing
- 95-265 VAC or 10-60 VDC operating voltages
- Suitable for indoor and outdoor use
- IP66 protection rating

### PYRA PY X-LA-15 Series Xenon Audible-Visual Signal Beacons 216 x 144 x 172 mm

Pfannenberg PYRA PY X-LA-15 series audible-visual signal beacons generate visual signals with four selectable flash frequencies. These powerful signal beacons offer 15 joules of flash energy, separate audio and visual controls, and a robust IP66 housing rated for harsh indoor and outdoor applications.

- 103 dB at 1m audible output
- Eight DIP switch selectable tones
- Xenon tube flashing strobe
- Selectable flash frequency and synchronized flash
- Control input to activate flash via PLC
- Polycarbonate/ABS blend housing
- Large visual coverage area
- 90-135 VAC or 18-30 VDC operating voltages
- Suitable for indoor and outdoor use
- NEMA 4/4X, IP66 protection rating



Starting at  
**\$425.00**  
(21565154055)



Starting at  
**\$346.00**  
(23311154055)

### PATROL PA X 1-05 Series Xenon Audible-Visual Signal Beacons 109 x 81 x 172 mm

Pfannenberg PATROL PA X 1-05 series LED audible-visual signal beacons provide a 105 dB audible output at 1m, a 5 joule flash output, and 80 pre-programmed alarm tones. These devices can operate in harsh environments and are surface- or flush-mountable.

- 105 dB at 1m audible output
- 80 pre-programmed tones
- Up to four selectable tones can be configured in one device and used as alarm levels
- Xenon tube flashing strobe
- 1 Hz flash frequency
- Polycarbonate/ABS blend housing
- 90-135 VAC or 18-30 VDC operating voltages
- Suitable for indoor and outdoor use
- NEMA 4/4X, IP66 protection rating



## Audible-Visual Signaling Beacons



### PYRA PY X-MA-10 Series Xenon Audible-Visual Signal Beacons 166 x 114 x 124 mm

Pfannenberg PYRA PY X-MA-10 series audible-visual signal beacons announce hazardous conditions for industrial, commercial, and construction applications. They offer eight selectable tones and four DIP switch selectable flash rates.

- 101 dB at 1m audible output
- Large signaling range
- Inrush current limit and undervoltage detection
- Full synchronization of multi-light flashing systems
- Separate light and sound control
- Polycarbonate/ABS blend housing
- 90-135 VAC or 10-57 VDC operating voltages
- Suitable for indoor and outdoor use
- IP66 protection rating



Starting at  
**\$337.00**  
(21555154055)



Starting at  
**\$436.00**  
(23351154055)

### PATROL PA X 5-05 Series Xenon Audible-Visual Signal Beacons 163 x 132 x 215 mm

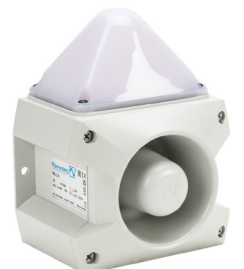
Pfannenberg PATROL PA X 5-05 series audible-visual signal beacons can operate in harsh environments and are surface- or flush-mountable.

- 107 dB at 1m audible output
- 80 pre-programmed tones
- Up to four selectable tones can be configured in one device and used as alarm levels
- Xenon tube flashing strobe
- 1 Hz flash frequency
- Polycarbonate/ABS blend housing
- 90-135 VAC or 18-30 VDC operating voltages
- Suitable for indoor and outdoor use
- NEMA 4/4X, IP66 protection rating

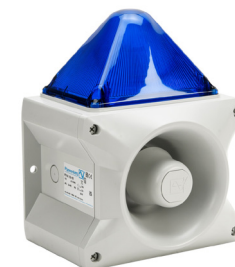
### PATROL PA L 5 Series LED Audible-Visual Signal Beacons 163 x 132 x 215 mm

Pfannenberg PATROL PA L 5 series LED audible-visual signal beacons can operate in harsh environments and are surface- or flush-mountable.

- 107 dB at 1m audible output
- 80 pre-programmed tones
- Up to four selectable tones can be configured in one device and used as alarm levels
- Permanent, blinking, and flashing signal modes
- Selectable colors
- Polycarbonate/ABS blend housing
- 195-265 VAC, 95-127 VAC, or 10-57 VDC operating voltages
- Suitable for indoor and outdoor use
- NEMA 4/4X, IP66 protection rating



Starting at  
**\$436.00**  
(23353108055)



Starting at  
**\$630.00**  
(23361154055)

### PATROL PA X 10-10 Series Xenon Audible-Visual Signal Beacons 214 x 156 x 270 mm

Pfannenberg PATROL PA X 10-10 series audible-visual signal beacons offer 80 pre-programmed audible alarm tones. Up to four selectable alarm tones can be configured in one device and used for different alarm levels.

- 117 dB at 1m audible output
- 80 pre-programmed tones
- Up to four selectable tones can be configured in one device and used as alarm levels
- Xenon tube flashing strobe
- 1 Hz flash frequency
- Polycarbonate/ABS blend housing
- 90-135 VAC or 18-30 VDC operating voltages
- Suitable for indoor and outdoor use
- NEMA 4/4X, IP66 protection rating





# Audible-Visual Signaling Beacons

## PATROL PA X 20-15 Series Xenon Audible-Visual Signal Beacons 214 x 181 x 270 mm

Pfannenberg PATROL PA X 20-15 series audible-visual signal beacons offer 80 pre-programmed audible alarm tones and external control options to switch between a maximum of four alarm tones.

- 122 dB at 1m audible output
- 80 pre-programmed tones
- Up to four selectable tones can be configured in one device and used as alarm levels
- Xenon tube flashing strobe
- 1 Hz flash frequency
- Polycarbonate/ABS blend housing
- 90-135 VAC or 18-30 VDC operating voltages
- Suitable for indoor and outdoor use
- NEMA 4/4X, IP66 protection rating

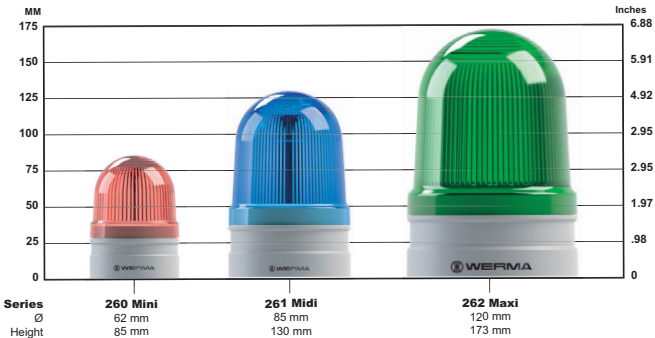


# Audible-Visual EvoSIGNAL Signaling Beacons

WERMA's EvoSIGNAL devices are streamlined modular beacon systems that warn, guide, and protect for a wide range of applications. Available with a variety of optical and audible signal types, they make it easy to configure the perfect system for your application and surroundings. They can be safely and easily changed without tools. Select the desired diameter: 62mm, 85mm, or 120mm, and then select the series, lens color, and mounting type that best fits your application.



## EvoSIGNAL Series Types



### EvoSIGNAL Mini and Midi TwinLIGHT Series

The TwinLIGHT series provides the option of a permanent or blinking light. Available in Mini (62mm) or Midi (85mm).

### EvoSIGNAL Mini and Midi TwinFLASH Series

The TwinFLASH series provides the option of a double flash or EVS (random flashing) light. Available in Mini (62mm) or Midi (85mm).

### EvoSIGNAL Midi and Maxi Rotating Series

The Midi and Maxi rotating series provide a 180 rpm rotating light. Available in Midi (85mm) or Maxi (120mm).

### EvoSIGNAL Mini and Midi Audible Signal Horn Series

The Mini (62mm) audible signal horn series provides the option of continuous or pulse tones at 95 dB at 1m. The Midi (85mm) audible signal horn series provides the option of 10 selectable tones at 110 dB at 1m.

### EvoSIGNAL Maxi TwinLIGHT 120mm Series

The Maxi TwinLIGHT 120mm series provides the option of a permanent or blinking, or a 180 rpm rotating light.

### EvoSIGNAL Maxi TwinFLASH Series

The Maxi TwinFLASH series provides the option of a double flash or EVS (random flashing) light.

### Features (all above):

- 115-230 VAC, 12/24 VAC/VDC voltage ratings
- Push-in connection terminals
- 2 year warranty
- IP66
- Base, tube, bracket and wall mount options
- Requires mounting adapter, sold separately

### EvoSIGNAL Mini and Midi Tricolor Series

The Tricolor series provides a permanent light that allows the color to be easily changed to red, yellow or green. Available in Mini (62mm) or Midi (85mm).

- Voltage ratings:
  - Mini: 24 VAC/VDC
  - Midi: 115-230 VAC, 12/24 VAC/VDC
- Push-in connection terminals
- 2 year warranty
- IP66
- Base, tube, bracket and wall mount options
- Requires mounting adapter, sold separately

### EvoSIGNAL Accessories

The Mini, Midi and Maxi series visual and audible beacons accessories include the required mounting adapter for the specific series/diameter size. The EvoSIGNAL accessories include:

- Base mounting adapters
- M22 / PG 29, Mounting adapters
- Tube mounting adapters
- Bracket mounting adapters with cable gland
- Bracket mounting



# Audible Signaling Devices



Starting at  
**\$8.25**  
(ECX2070-24)

## AutomationDirect ECX Series 22mm Audible Alarm Buzzers

AutomationDirect ECX series 22mm panel-mounted alarm buzzers offer basic audible and visual alerts.

- Pulse tone buzzers up to 80dB @ 10cm
- Intermittent sound when energized
- IP65 protection rating

## Fuji Electric Command Series 22mm and 30mm Alarm Buzzers

Fuji Electric command series 22mm and 30mm alarm buzzers are used in machine tools, industrial machines, control panels, distribution panels, and instrumentation panels.

- Intermittent/continuous electronic sound
- Models available with or without red LED indicators
- Volume up to 90 dB @ 1m, depending on model



Starting at  
**\$35.00**  
(DR22B8-EB)



Starting at  
**\$122.00**  
(BD-24AE-J)

## PATLITE® Panel or Surface-Mount Electronic Sound Alarms

Audible alarms provide electronic sound notification for machines, systems, and/or process alarms, with a range of alarm tone choices.

- Panel or surface-mountable rectangular housing
- BD Series offers 32 different alarm tones, 90 dB @ 1m
- BSV series can play up to 15 pre-recorded alarm sounds/notifications, 85 dB @ 1m
- BM series with 2 selectable tones, up to 90 dB at 1m

## PATLITE® Electronic Sound Signal Horns

Patlite electronic sound signal horns are rugged bracket-mounted alarms suitable for many environments.

- Indoor/outdoor mounting
- 32 selectable electronic tones
- 12 to 24 VDC and 100 to 240 VAC versions
- Maximum volume 110dB @ 1m



Starting at  
**\$252.00**  
(EHS-M1TE)



Starting at  
**\$158.00**  
(23310630055)

## Pfannenberg PATROL PA 1/PA 5 Series Audible Signal Horns

Pfannenberg PATROL PA 1/PA 5 series signal horns offer impact-proof housings, and base connection terminals, non-detachable seals, and quick-locking elements for easy mounting.

- Up to 107 dB at 1m audible output
- 80 pre-programmed tones
- Up to four selectable tones can be configured in one device and used as alarm levels
- Polycarbonate/ABS blend housing
- 95-127 VAC or 10-57 VDC operating voltages
- Suitable for indoor and outdoor use
- NEMA 4/4X, IP66 protection rating



## Pfannenberg PATROL PA 10/PA 20 Series Audible Signal Horns

Pfannenberg PATROL PA 10/PA 20 series signal horns offer 80 pre-programmed audible alarm tones and feature rugged IP66 rated, impact-proof housings. In addition, the base connection terminals, non-detachable seals, and quick-locking elements provide easy mounting.

- Up to 122 dB at 1m audible output
- 80 pre-programmed tones
- Up to four selectable tones can be configured in one device and used as alarm levels
- Polycarbonate/ABS blend housing
- 95-265 VAC or 10-60 VDC operating voltages
- Suitable for indoor and outdoor use
- NEMA 4/4X, IP66 protection rating



Starting at  
**\$447.00**  
(23360630055)



## WERMA 22.5mm Panel-Mount Audible Buzzers

- 107 series non-illuminated with 80dB @ 0.1m in continuous or pulse-tone
- 109 series non-illuminated with 80dB @ 1m continuous or pulse-tone
- 110 series with 8 selectable tones at 100dB @ 1m

### Common Features:

- Mount in 22.5 mm holes
- Models available with or without red LED indicators
- Continuous or pulse-tone models

- 150 series with LED indicator and 80dB @ 1m continuous tone
- 450 series with LED indicator, alarm acknowledgment, and 80dB @ 1m continuous tone

- 80 to 100 decibels
- Low current consumption
- IP65 protection rating



Starting at  
**\$33.50**  
(10700070)



## WERMA Wall-Mount Signal Horns

WERMA electro-mechanical wall-mount signal horns offer loud continuous tone notification. Models with trumpet extensions direct and amplify the sound.

- 570 series with trumpet, 148mm diameter, 108dB @ 1m, plastic housing, IP55 rated
- 571 series with trumpet, 132mm diameter, 108dB @ 1m, corrosion-resistant aluminum housing, saltwater proof, IP55 rated
- 573 series 178mm rectangular, 105dB @ 1m, IP65 rated



Starting at  
**\$113.00**  
(57005267)