

Enclosure Subpanels



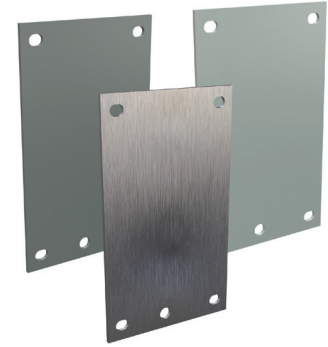
Subpanels

Subpanels are not included with most enclosures and must be purchased separately.

The specifications table for each enclosure family list the part number of the subpanel that goes with each enclosure.

Subpanels for Small NEMA 12 (B) and NEMA 4 (BN4) Enclosures

- 14-gauge (painted, stainless, and galvanized)
- Painted steel subpanels are white polyester powder over phosphatized surfaces
- Galvanized subpanels have a conductive finish (no paint)
- Subpanels fit the following enclosures: B, B_CH, BN4, BN4_CH, BN4_CHQT, BN4_SS, BN4_CHSS, BN4_CHSSA, BN4_CHQTSS, BN4_CHQTSSA ("_" refers to dimensions).



Shipping Schedule

Same day 1 - 5 days 1 - 7 days 1 - 15 days 1 - 20 days

Color indicates shipping lead time in business days.

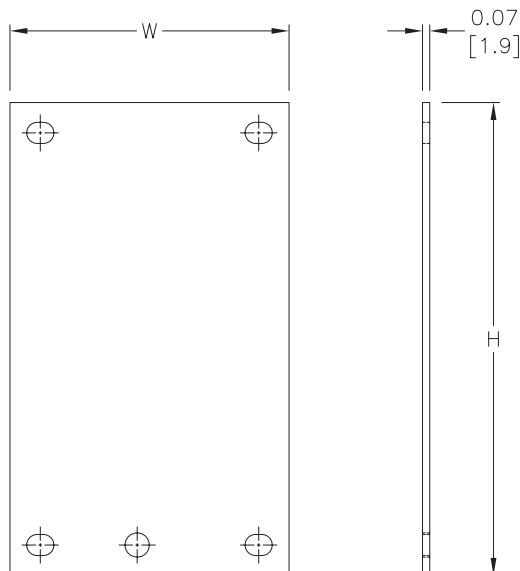
Subpanels for B and BN4 Enclosures

Painted Steel	Price	304 Stainless Steel	Price	Galvanized	Price	Nominal Enclosure Size HxW	Subpanel Size AxH
<u>P0604</u>	\$5.25	<u>P0604SS</u>	\$15.25	<u>P0604G</u>	Retired	6 x 4	4.88 x 2.88 [124 x 73]
<u>P0606</u>	\$6.25	<u>P0606SS</u>	\$19.00	<u>P0606G</u>	Retired	6 x 6	4.88 x 4.88 [124 x 124]
<u>P0806</u>	\$7.25	<u>P0806SS</u>	\$22.50	<u>P0806G</u>	Retired	8 x 6	6.88 x 4.88 [175 x 124]
<u>P0808</u>	\$8.50	—	—	<u>P0808G</u>	Retired	8 x 8	6.88 x 6.88 [175 x 175]
<u>P1008</u>	\$9.25	<u>P1008SS</u>	\$32.50	<u>P1008G</u>	Retired	10 x 8	8.88 x 6.88 [226 x 175]
<u>P1010</u>	\$11.50	—	—	<u>P1010G</u>	Retired	10 x 10	8.88 x 8.88 [226 x 226]
<u>P1206</u>	\$9.25	—	—	<u>P1206G</u>	Retired	12 x 6	10.88 x 4.88 [276 x 124]
<u>P1210</u>	\$13.25	<u>P1210SS</u>	\$45.50	<u>P1210G</u>	Retired	12 x 10	10.88 x 8.88 [276 x 226]
<u>P1212</u>	\$15.50	<u>P1212SS</u>	\$53.00	<u>P1212G</u>	Retired	12 x 12	10.88 x 10.88 [276 x 276]
<u>P1408</u>	\$12.75	—	—	<u>P1408G</u>	Retired	14 x 8	12.88 x 6.88 [327 x 175]
<u>P1412</u>	\$17.50	<u>P1412SS</u>	\$61.00	<u>P1412G</u>	Retired	14 x 12	12.88 x 10.88 [327 x 276]
<u>P1610</u>	\$17.00	—	—	<u>P1610G</u>	Retired	16 x 10	14.88 x 8.88 [378 x 226]
<u>P1614</u>	\$23.00	<u>P1614SS</u>	\$80.00	<u>P1614G</u>	Retired	16 x 14	14.88 x 12.88 [378 x 327]

Notes: Dimensions in inches [millimeters].

Letters in table correspond to letters on dimensional drawing.

Dimensions

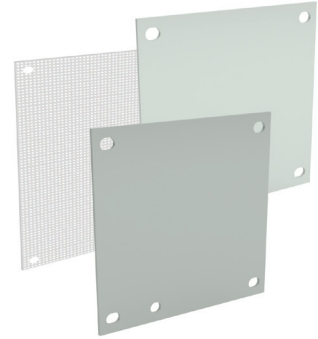


Enclosure Subpanels



Subpanels for Small NEMA 1, NEMA 3R and NEMA 12 Enclosures

- 14-gauge
- Painted steel and perforated subpanels are painted white polyester powder over phosphatized surfaces
- Galvanized panels have a conductive finish (no paint)
- Panels listed fit the following enclosures:
 - NEMA 1 small (N1C)
 - NEMA 3R small (RHC)
 - NEMA 12 WA_GIE



Shipping Schedule

Same day 1 - 5 days 1 - 7 days 1 - 15 days 1 - 20 days

Color indicates shipping lead time in business days.

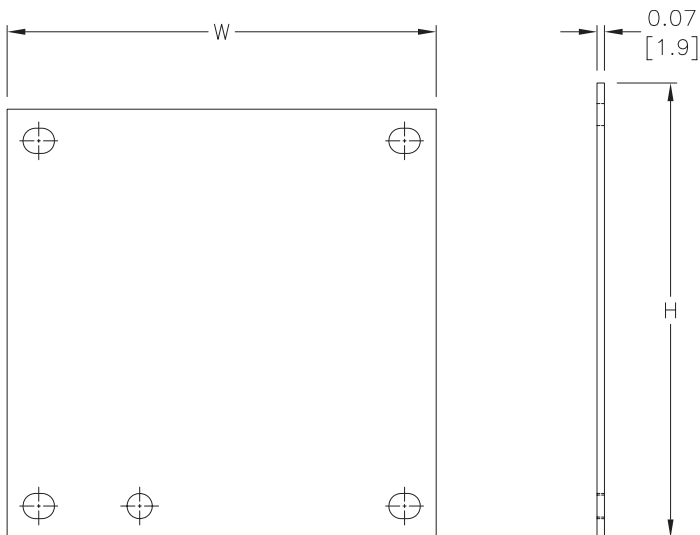
Subpanels for Small NEMA 1, NEMA 3R and NEMA 12 Enclosures

Painted Steel	Price	Galvanized	Price	Perforated	Price	Nominal Enclosure Size HxW	Subpanel Size AxB
<u>N1P0606</u>	\$5.25	<u>N1P0606G</u>	Retired	<u>N1P0606PP</u>	Retired	6 x 6	4.25 x 4.25 [108 x 108]
<u>N1P0608</u>	\$6.25	<u>N1P0608G</u>	\$6.25	<u>N1P0608PP</u>	Retired	6 x 8	6.25 x 4.25 [159 x 108]
<u>N1P0808</u>	\$7.25	<u>N1P0808G</u>	\$7.25	<u>N1P0808PP</u>	Retired	8 x 8	6.25 x 6.25 [159 x 159]
<u>N1P0810</u>	\$8.50	<u>N1P0810G</u>	\$8.50	<u>N1P0810PP</u>	Retired	8 x 10	8.25 x 6.25 [210 x 159]
<u>N1P1010</u>	\$10.00	<u>N1P1010G</u>	Retired	<u>N1P1010PP</u>	Retired	10 x 10	8.25 x 8.25 [210 x 210]
<u>N1P1012</u>	\$11.50	<u>N1P1012G</u>	Retired	<u>N1P1012PP</u>	Retired	10 x 12	10.25 x 8.25 [260 x 210]
<u>N1P1212</u>	\$13.75	<u>N1P1212G</u>	Retired	<u>N1P1212PP</u>	Retired	12 x 12	10.25 x 10.25 [260 x 260]
<u>N1P1214</u>	\$15.50	<u>N1P1214G</u>	Retired	<u>N1P1214PP</u>	Retired	12 x 14	12.25 x 10.25 [311 x 260]
<u>N1P1216</u>	\$17.50	<u>N1P1216G</u>	Retired	<u>N1P1216PP</u>	Retired	12 x 16	14.25 x 10.25 [362 x 260]
<u>N1P1220</u>	\$24.00	<u>N1P1220G</u>	Retired	<u>N1P1220PP</u>	Retired	12 x 20	18.25 x 10.25 [464 x 260]

Notes: Dimensions in inches [millimeters].

Letters in table correspond to letters on dimensional drawing.

Dimensions



Note: Perforated panels have 0.13in [3 mm] diameter holes at 0.25in [6 mm] spacing.

Enclosure Subpanels



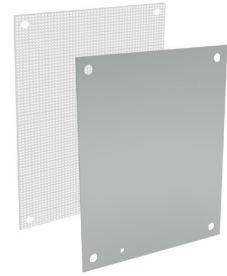
Subpanels for Medium NEMA 1 Enclosures

- Painted steel and perforated subpanels are painted white polyester powder over phosphatized surfaces
- Panels listed fit NEMA 1 large (N1C) enclosures

Shipping Schedule

Same day 1 - 5 days 1 - 7 days 1 - 15 days 1 - 20 days

Color indicates shipping lead time in business days.



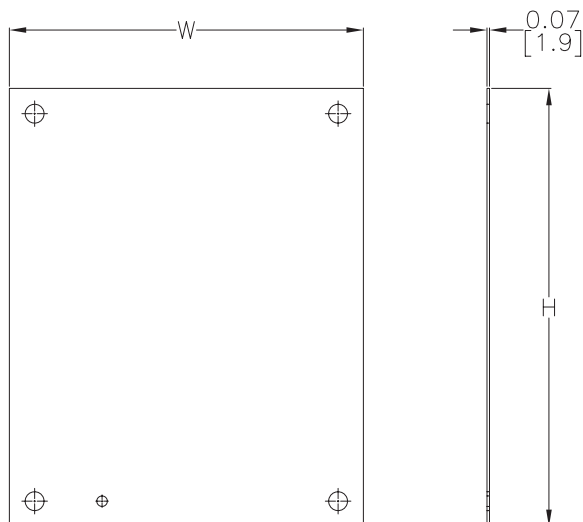
Subpanels for Medium NEMA 1 Enclosures

Painted Steel	Price	Perforated	Price	Nominal Enclosure Size HxW	Steel Gauge	Subpanel Size AxB
<u>N1P1216L</u>	\$18.00	<u>N1P1216LPP</u>	Retired	16 x 12	14	13.00 x 10.50 [330 x 267]
<u>N1P1616</u>	\$22.00	<u>N1P1616PP</u>	Retired	16 x 16	14	13.00 x 14.50 [330 x 368]
<u>N1P1620</u>	\$26.50	<u>N1P1620PP</u>	Retired	20 x 16	14	17.00 x 14.50 [432 x 368]
<u>N1P1624</u>	\$32.50	<u>N1P1624PP</u>	Retired	24 x 16	14	21.00 x 14.50 [533 x 368]
<u>N1P2016</u>	\$27.00	<u>N1P2016PP</u>	Retired	16 x 20	14	13.00 x 18.50 [330 x 470]
<u>N1P2020</u>	\$35.50	<u>N1P2020PP</u>	Retired	20 x 20	14	17.00 x 18.50 [432 x 470]
<u>N1P2024</u>	\$40.50	<u>N1P2024PP</u>	Retired	24 x 20	14	21.00 x 18.50 [533 x 470]
<u>N1P2030</u>	\$87.00	<u>N1P2030PP</u>	Retired	30 x 20	14	26.00 x 18.50 [660 x 470]
<u>N1P2420</u>	\$41.00	<u>N1P2420PP</u>	Retired	20 x 24	14	17.00 x 22.50 [432 x 572]
<u>N1P2424</u>	\$76.00	<u>N1P2424PP</u>	Retired	24 x 24	14	21.00 x 22.50 [533 x 572]
<u>N1P2430</u>	\$100.00	<u>N1P2430PP</u>	Retired	30 x 24	14	26.00 x 22.50 [660 x 572]
<u>N1P2436</u>	\$103.00	<u>N1P2436PP</u>	Retired	36 x 24	14	32.00 x 22.50 [813 x 572]
<u>N1P3030</u>	\$122.00	<u>N1P3030PP</u>	Retired	30 x 30	14	26.00 x 28.50 [660 x 724]
<u>N1P3036</u>	\$148.00	<u>N1P3036PP</u>	Retired	36 x 30	14	32.00 x 28.50 [813 x 724]

Notes: Dimensions in inches [millimeters].

Letters in table correspond to letters on dimensional drawing.

Dimensions



NOTE:
SUBPANELS LARGER THAN
20 X 20 HAVE (2) 0.31"
GROUND HOLES.

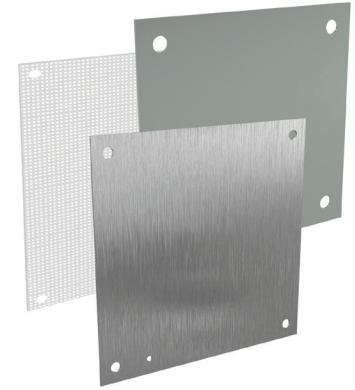
Note: Perforated panels have 0.13in [3 mm] diameter holes at 0.25in [6 mm] spacing.

Enclosure Subpanels



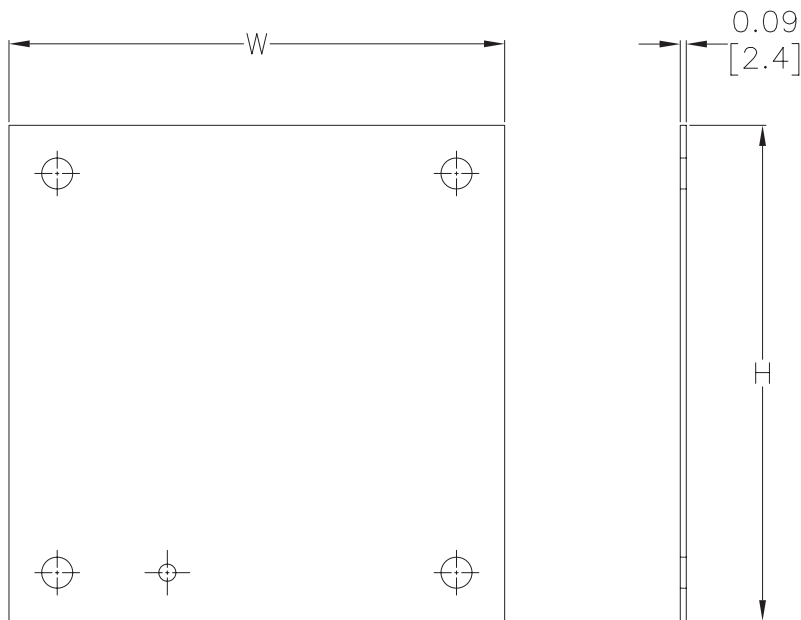
Subpanels for NEMA 1, 12, 4 and 4X Wall-Mount Enclosures and WC9 NEMA 12 Operator Consoles

- 12-gauge steel (perforated subpanels are 14-gauge)
- Subpanels with any side over 17 in [432 mm] have 0.25 in [6mm] flange on all sides
- Painted steel and perforated subpanels white polyester powder over phosphatized surfaces
- Galvanized subpanels have a conductive finish (no paint) Panels listed fit the following enclosures:
- NEMA 1 large (N1C, 42 in [1067 mm] width and wider)
- NEMA 12 single door wall-mount (N12)
- NEMA 12 two-door wall-mount (WA_WF)
- NEMA 12 single door flush wall-mount (WA_FM)
- NEMA 4 (N4) and 4X (SSN) single door wall-mount
- NEMA 12 operator consoles (WC9)
- NEMA 12 Wall Disconnect (SDN12_PL and ABN12)
- NEMA 4 and 4X Wall-Mount Disconnect (SSN4 and SSN4X)



Note: Use NPxxxx subpanels in NEMA 1, NEMA 4 and 4X, and NEMA 12 enclosures only. Do NOT use NPxxxx subpanels in N412 Ultimate Series enclosures with a C in the suffix.

Dimensions



NOTE:
SUBPANELS LARGER THAN
20 X 20 HAVE (2) 0.31"
GROUND HOLES.

Note: Perforated panels have 0.13in [3 mm] diameter holes at 0.25 in [6 mm] spacing.

Enclosure Subpanels



Shipping Schedule

Same day 1 - 5 days 1 - 7 days 1 - 15 days 1 - 20 days

Color indicates shipping lead time in business days.

Subpanels for NEMA 1, 12, 4 and 4X Wall-Mount Enclosures and WC9 NEMA 12 Operator Consoles

Painted Steel	Price	Galvanized	Price	Perforated	Price	304 Stainless Steel	Price	Nominal Enclosure Size HxW	Subpanel Size AxB
NP1212	\$19.50	NP1212G	Retired	—	—	—	—	12 x 12	9.00 x 9.00 [229 x 229]
NP1224	\$48.00	NP1224G	Retired	—	—	—	—	24 x 12	9.00 x 21.00 [229 x 533]
NP1612	\$34.50	NP1612G	Retired	NP1612PP	Retired	NP1612SS	\$80.00	12 x 16 16 x 12	13.00 x 9.00 [330 x 229]
NP1616	\$42.50	NP1616G	Retired	NP1616PP	Retired	NP1616SS	\$97.00	16 x 16	13.00 x 13.00 [330 x 330]
NP2012	\$40.00	NP2012G	Retired	—	—	—	—	20 x 12	17.00 x 9.00 [432 x 229]
NP2016	\$51.00	NP2016G	Retired	NP2016PP	Retired	NP2016SS	\$117.00	20 x 16	17.00 x 13.00 [432 x 330]
NP2020	\$61.00	NP2020G	Retired	NP2020PP	Retired	NP2020SS	\$151.00	20 x 20	17.00 x 17.00 [432 x 432]
NP2416	\$59.00	NP2416G	Retired	—	—	NP2416SS	\$145.00	24 x 16	21.00 x 13.00 [533 x 330]
NP2420	\$79.00	NP2420G	Retired	NP2420PP	Retired	NP2420SS	\$183.00	24 x 20	21.00 x 17.00 [533 x 432]
NP2424	\$91.00	NP2424G	Retired	NP2424PP	Retired	NP2424SS	\$213.00	24 x 24	21.00 x 21.00 [533 x 533]
NP3016	\$78.00	NP3016G	Retired	—	—	—	—	30 x 16	27.00 x 13.00 [686 x 330]
NP3020	\$95.00	NP3020G	Retired	—	—	NP3020SS	\$245.00	30 x 20	27.00 x 17.00 [686 x 432]
NP3024	\$110.00	NP3024G	Retired	NP3024PP	Retired	NP3024SS	\$258.00	24 x 30 30 x 24	27.00 x 21.00 [686 x 533]
NP3030	\$155.00	NP3030G	Retired	NP3030PP	Retired	NP3030SS	\$414.00	30 x 30	27.00 x 27.00 [686 x 686]
NP3624	\$132.00	NP3624G	Retired	NP3624PP	Retired	NP3624SS	\$353.00	36 x 24	33.00 x 21.00 [838 x 533]
NP3630	\$175.00	NP3630G	Retired	NP3630PP	Retired	NP3630SS	\$405.00	30 x 36 36 x 30	33.00 x 27.00 [838 x 686]
NP3636	\$206.00	NP3636G	Retired	NP3636PP	Retired	NP3636SS	\$489.00	36 x 36	33.00 x 33.00 [838 x 838]
NP4024	\$158.00	—	—	—	—	—	—	40 x 24	37.00 x 21.00 [940 x 533]
NP4224	\$151.00	NP4224G	Retired	—	—	—	—	42 x 24	39.00 x 21.00 [991 x 533]
NP4230	\$201.00	NP4230G	Retired	NP4230PP	Retired	NP4230SS	\$515.00	42 x 30	39.00 x 27.00 [991 x 686]
NP4236	\$236.00	NP4236G	Retired	NP4236PP	Retired	NP4236SS	\$618.00	42 x 36	39.00 x 33.00 [991 x 838]
NP4824	\$171.00	NP4824G	Retired	—	—	—	—	48 x 24	45.00 x 21.00 [1143 x 533]
NP4830	\$225.00	NP4830G	Retired	—	—	—	—	48 x 30	45.00 x 27.00 [1143 x 686]
NP4836	\$267.00	NP4836G	Retired	NP4836PP	Retired	NP4836SS	\$669.00	48 x 36	45.00 x 33.00 [1143 x 838]
NP6030	\$276.00	NP6030G	Retired	—	—	—	—	60 x 30	57.00 x 27.00 [1448 x 686]
NP6036	\$328.00	NP6036G	Retired	NP6036PP	Retired	NP6036SS	\$883.00	60 x 36	57.00 x 33.00 [1448 x 838]
NP7230	\$318.00	NP7230G	\$344.00	—	—	—	—	72 x 30	69.00 x 27.00 [1753 x 686]
NP7236	\$389.00	NP7236G	\$422.00	—	—	—	—	72 x 36	69.00 x 33.00 [1753 x 838]

Notes: Dimensions in inches [millimeters].

Letters in table correspond to letters on dimensional drawing.

Disconnect enclosures will be up to 2 in [51 mm] wider than width dimensions in this table.

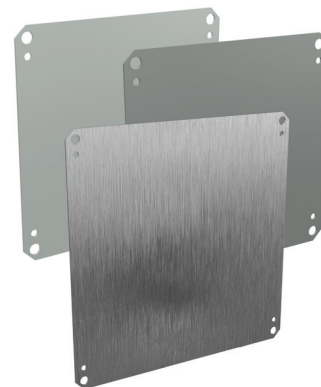
Enclosure Subpanels



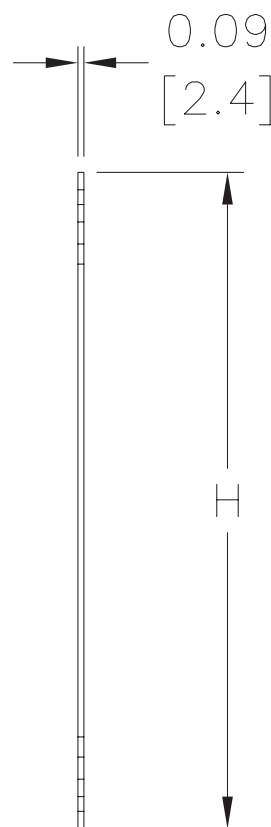
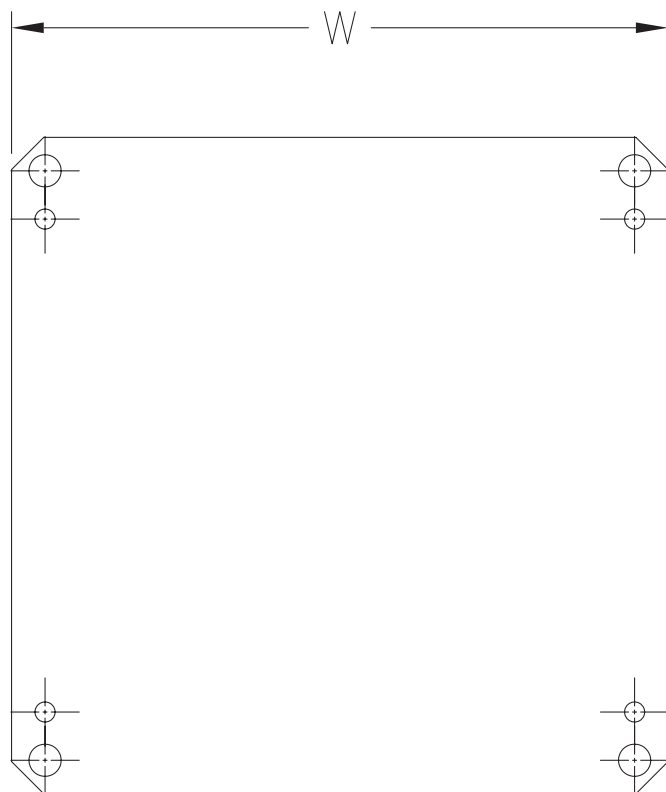
Subpanels for Ultimate Series Wall-Mount Enclosures

- 12-gauge steel
- Subpanels with dimensions 30 x 30 in [762 x 762 mm] and larger are flanged on all sides. Smaller subpanels are flanged on two sides
- Painted steel subpanels are white polyester powder over phosphatized surfaces
- Galvanized subpanels have a conductive finish (no paint)
- Panels listed fit all styles of N412 Ultimate Series wall-mount enclosures, including slope top and disconnect enclosures

Note: NPxxxxC subpanels will not fit in older NEMA 4/12 enclosures (purchased prior to 3-23-05) that do not have a C suffix. For example: Subpanel NP1212C will not fit enclosures N412121206 or N412121206SS.



Dimensions



Enclosure Subpanels



Subpanels for Ultimate Series Wall-Mount Enclosures

Shipping Schedule

Same day 1 - 5 days 1 - 7 days 1 - 15 days 1 - 20 days

Color indicates shipping lead time in business days.

Subpanels for Ultimate Series Wall-Mount Enclosures

Painted Steel	Price	Galvanized	Price	304 Stainless Steel	Price	Nominal Enclosure Size HxW*	Subpanel Size HxW
NP1212C	\$16.50	NP1212CG	Retired	—	—	12 x 12	10.20 x 10.20 [259 x 259]
NP1612C	\$17.75	NP1612CG	Retired	NP1612SSC	\$80.00	16 x 12	14.20 x 10.20 [361 x 259]
NP1616C	\$42.50	NP1616CG	Retired	NP1616SSC	\$97.00	16 x 16	14.20 x 14.20 [361 x 361]
NP2016C	\$51.00	NP2016CG	Retired	NP2016SSC	\$117.00	16 x 20 20 x 16	18.20 x 14.20 [462 x 361]
NP2020C	\$61.00	NP2020CG	Retired	NP2020SSC	\$151.00	20 x 20	18.20 x 18.20 [462 x 462]
NP2416C	\$59.00	NP2416CG	Retired	NP2416SSC	\$145.00	24 x 16	22.20 x 14.20 [564 x 361]
NP2420C	\$59.00	NP2420CG	Retired	NP2420SSC	\$183.00	24 x 20	22.20 x 18.20 [564 x 462]
NP2424C	\$91.00	NP2424CG	Retired	NP2424SSC	\$213.00	24 x 24	22.20 x 22.20 [564 x 564]
NP3020C	\$95.00	NP3020CG	Retired	—	—	30 x 20	28.20 x 18.20 [716 x 462]
NP3024C	\$110.00	NP3024CG	Retired	NP3024SSC	\$280.00	30 x 24	28.20 x 22.20 [716 x 564]
NP3030C	\$155.00	NP3030CG	Retired	NP3030SSC	\$382.00	30 x 30	28.20 x 28.20 [716 x 716]
NP3624C	\$132.00	NP3624CG	Retired	NP3624SSC	\$326.00	24 x 36 36 x 24	34.20 x 22.20 [869 x 564]
NP3630C	\$175.00	NP3630CG	Retired	NP3630SSC	\$405.00	36 x 30	34.20 x 28.20 [869 x 716]
NP3636C	\$206.00	NP3636CG	Retired	NP3636SSC	\$489.00	36 x 36	34.20 x 34.20 [869 x 869]
NP4224C	\$256.00	—	—	—	—	24 x 42	40.20 x 22.20 [1021 x 564]
NP4024C	\$158.00	NP4024CG	Retired	—	—	40 x 24	38.20 x 22.20 [970 x 564]
NP4242C	\$439.00	—	—	—	—	42 x 42	40.20 x 40.20 [1021 x 1021]
NP4230C	\$236.00	—	—	—	—	30 x 42 42 x 32	40.20 x 28.20 [1021 x 716]
NP4236C	\$236.00	NP4236CG	Retired	NP4236SSC	\$618.00	36 x 42 42 x 36	40.20 x 34.20 [1021 x 869]
NP4824C	\$171.00	NP4824CG	Retired	—	—	24 x 48 48 x 24	46.20 x 22.20 [1173 x 564]
NP4830C	\$352.00	—	—	—	—	30 x 48	46.20 x 28.20 [1173 x 716]
NP4842C	\$590.00	—	—	—	—	42 x 48	46.20 x 40.20 [1173 x 1021]
NP4836C	\$267.00	NP4836CG	Retired	NP4836SSC	\$618.00	36 x 48 48 x 36	46.20 x 34.20 [1173 x 869]
NP4848C	\$656.00	—	—	—	—	48 x 48	46.20 x 46.20 [1173 x 1173]
NP6030C	\$468.00	—	—	—	—	30 x 60	58.20 x 28.20 [1478 x 716]
NP6036C	\$328.00	NP6036CG	Retired	NP6036SSC	\$883.00	36 x 30 60 x 36	58.20 x 34.20 [1478 x 869]
NP6042C	\$659.00	—	—	—	—	42 x 60	58.20 x 40.20 [1478 x 1021]

Notes: Dimensions in inches [millimeters].

Letters in table correspond to letters on dimensional drawing.

Disconnect enclosures will be up to 2 in [51 mm] wider than width dimensions in this table.

Enclosure Subpanels



Subpanels for Two-Door Floor-Mount Enclosures

- Subpanels are fabricated from 10-gauge carbon steel
- Painted steel subpanels are painted white polyester powder over phosphatized surfaces
- Galvanized subpanels have a conductive finish (no paint)
- Subpanels are used in NEMA 12 double-door floor-mount enclosures and some double-door wall-mount enclosures

Shipping Schedule

Same day 1 - 5 days 1 - 7 days 1 - 15 days 1 - 20 days

Color indicates shipping lead time in business days.



Subpanels for Two-door Floor-Mount Enclosures

Painted Steel	Price	Galvanized	Price	Nominal Enclosure Size HxW*	Subpanel Size AxB
<u>NPDD4242</u>	\$273.00	<u>NPDD4242G</u>	Retired	42 x 42	39.00 x 39.00 [991 x 991]
<u>NPDD4260</u>	Retired	<u>NPDD4260G</u>	Retired	42 x 60	38.00 x 56.00 [965 x 1422]
<u>NPDD4842</u>	\$309.00	<u>NPDD4842G</u>	Retired	48 x 42	45.00 x 39.00 [1143 x 991]
<u>NPDD4848</u>	\$370.00	<u>NPDD4848G</u>	Retired	48 x 48	44.00 x 44.00 [1118 x 1118]
<u>NPDD5442</u>	\$330.00	<u>NPDD5442G</u>	Retired	54 x 42	50.00 x 38.00 [1270 x 965]
<u>NPDD6048</u>	\$449.00	<u>NPDD6048G</u>	Retired	60 x 48	44.00 x 56.00 [1118 x 1422]
<u>NPDD6060</u>	\$553.00	<u>NPDD6060G</u>	Retired	60 x 60	56.00 x 56.00 [1422 x 1422]
<u>NPDD7260</u>	\$659.00	<u>NPDD7260G</u>	Retired	72 x 60	56.00 x 68.00 [1422 x 1727]
<u>NPDD7272</u>	\$787.00	—	—	72 x 72	68.00 x 68.00 [1727 x 1727]

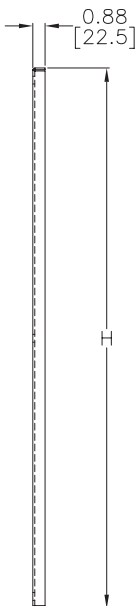
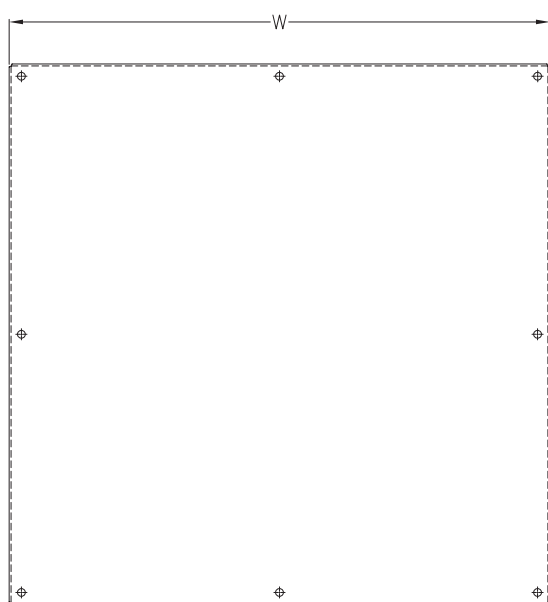
Notes: Dimensions in inches [millimeters].

Letters in table correspond to letters on dimensional drawing.

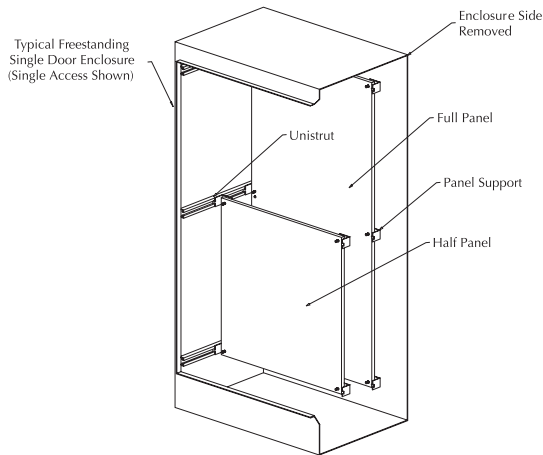
*Some floor-mount enclosures may be up to 2 in [51 mm] taller than height listed in this table.

Disconnect enclosures will be up to 2 in [51 mm] wider than width dimensions listed in this table.

Dimensions



WA-F1/F2 Panels for Single-Door Freestanding Enclosures



Description

- Panels for single-door single-access and single-door dual-access, freestanding NEMA 12, and freestanding NEMA 4 enclosures
- Can be positioned anywhere along horizontal depth-wise mounting channels
- Half-height panels can be located in the upper or lower portion of the enclosure
- Mounting hardware is furnished with each panel
- Painted steel subpanels are painted white polyester powder over phosphatized surfaces
- Galvanized subpanels have a conductive finish (no paint)
- May be used in two-door enclosures along with other freestanding accessories

Shipping Schedule

Same day 1 - 5 days 1 - 7 days 1 - 15 days 1 - 20 days

Color indicates shipping lead time in business days.

Painted Steel	Price	Galvanized	Price	Steel Gauge	Panel Size HxW	Subpanel Type
<u>WA60P24F1</u>	\$359.00	<u>WA60P24F1G</u>	Retired	12	48.00 x 20.00 [1219 x 508]	Full
<u>WA60P24F2</u>	\$259.00	<u>WA60P24F2G</u>	Retired	10	24.88 x 20.00 [632 x 508]	Half
<u>WA60P36F1</u>	\$463.00	<u>WA60P36F1G</u>	\$463.00	12	48.00 x 32.00 [1219 x 813]	Full
<u>WA60P36F2</u>	\$292.00	<u>WA60P36F2G</u>	\$292.00	12	24.88 x 32.00 [632 x 813]	Half
<u>WA72P24F1</u>	\$402.00	<u>WA72P24F1G</u>	\$402.00	12	60.00 x 20.00 [1524 x 508]	Full
<u>WA72P24F2</u>	Retired	<u>WA72P24F2G</u>	Retired	12	30.88 x 20.00 [784 x 508]	Half
<u>WA72P30F1</u>	\$468.00	<u>WA72P30F1G</u>	\$506.00	12	60.00 x 26.00 [1524 x 660]	Full
<u>WA72P30F2</u>	Retired	<u>WA72P30F2G</u>	Retired	10	30.88 x 26.00 [784 x 660]	Half
<u>WA72P36F1</u>	\$533.00	<u>WA72P36F1G</u>	\$533.00	12	60.00 x 32.00 [1524 x 813]	Full
<u>WA72P36F2</u>	Retired	<u>WA72P36F2G</u>	Retired	12	30.88 x 32.00 [784 x 813]	Half
<u>WA90P24F1</u>	\$468.00	<u>WA90P24F1G</u>	\$468.00	12	78.00 x 20.00 [1981 x 508]	Full
<u>WA90P24F2</u>	Retired	<u>WA90P24F2G</u>	Retired	10	39.88 x 20.00 [1013 x 508]	Half
<u>WA90P36F1</u>	\$637.00	<u>WA90P36F1G</u>	\$637.00	12	78.00 x 32.00 [1981 x 813]	Full
<u>WA90P36F2</u>	Retired	<u>WA90P36F2G</u>	Retired	10	39.88 x 32.00 [1013 x 813]	Half

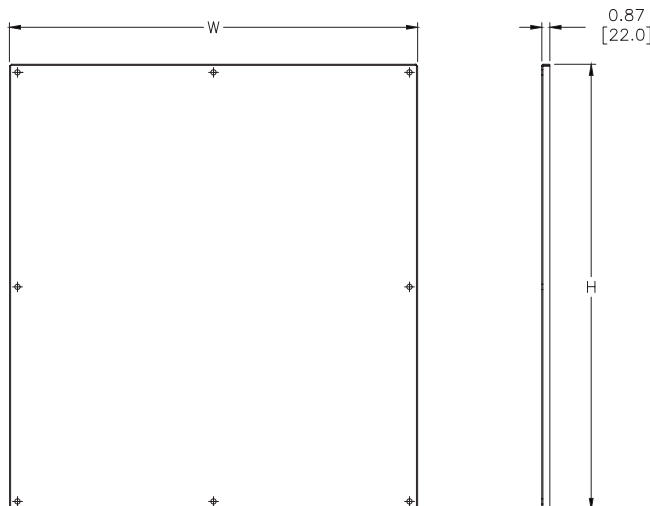
Notes: Dimensions in inches [millimeters].

Letters in table correspond to letters on dimensional drawing.

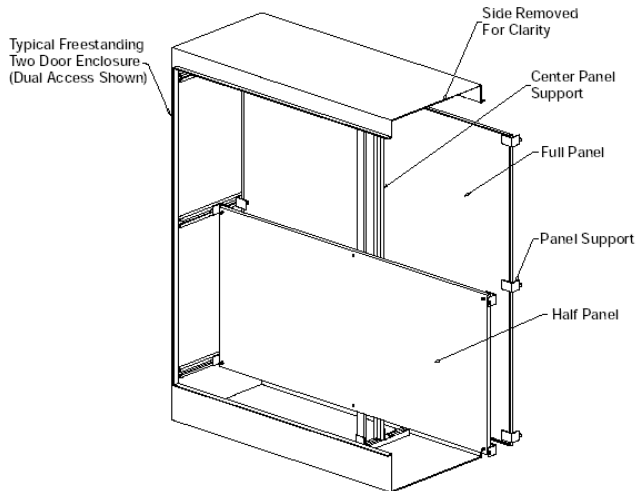
If used in a two-door enclosure, a center panel support must be ordered.

Suffix F1= full panel, F2 = half panel

Dimensions



WA-F1/F2 Panels for Two-Door Freestanding Enclosures



Description

- Panels for two-door single-access and two-door dual-access, freestanding NEMA 12 enclosures
- Manufactured of 10-gauge steel and can be positioned anywhere along horizontal depth-wise mounting channels
- Half-height panels can be located in the upper or lower portion of the enclosure
- Mounting hardware is furnished with each panel
- Painted steel subpanels are painted white polyester powder over phosphatized surfaces
- Galvanized subpanels have a conductive finish (no paint)

Shipping Schedule

Same day 1 - 5 days 1 - 7 days 1 - 15 days 1 - 20 days

Color indicates shipping lead time in business days.

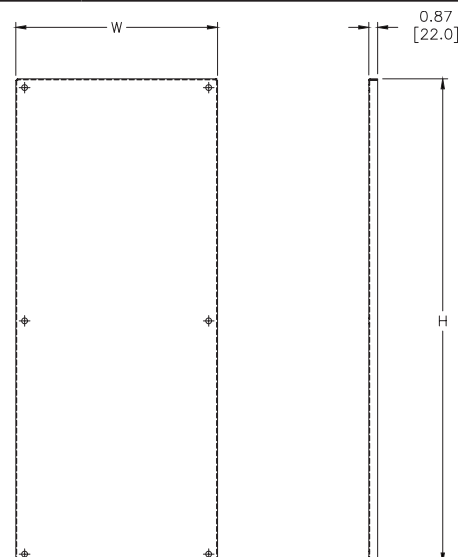
Painted Steel	Price	Galvanized	Price	Panel Size AxB	Subpanel Type
WA60P48F1	\$744.00	WA60P48F1G	\$744.00	48.00 x 44.00 [1219 x 1118]	Full
WA60P48F2	Retired	WA60P48F2G	Retired	24.88 x 44.00 [632 x 1118]	Half
WA72P48F1	\$841.00	WA72P48F1G	\$841.00	60.00 x 44.00 [1524 x 1118]	Full
WA72P48F2	Retired	WA72P48F2G	Retired	30.88 x 44.00 [784 x 1118]	Half
WA72P60F1	\$975.00	WA72P60F1G	\$975.00	60.00 x 56.00 [1524 x 1422]	Full
WA72P60F2	Retired	WA72P60F2G	Retired	30.88 x 56.00 [784 x 1422]	Half
WA72P72F1	\$1,108.00	—	—	68.00 x 68.00 [1727 x 1727]	Full
WA72P72F2	Retired	WA72P72F2G	Retired	30.88 x 68.88 [784 x 1727]	Half
WA90P48F1	\$989.00	WA90P48F1G	\$1,071.00	78.00 x 44.00 [1981 x 1118]	Full
WA90P48F2	Retired	WA90P48F2G	Retired	39.88 x 44.00 [1013 x 1118]	Half
WA90P72F1	\$1,335.00	—	—	78.00 x 68.00 [1981 x 1727]	Full
WA90P72F2	Retired	WA90P72F2G	Retired	39.88 x 68.00 [1013 x 1727]	Half

Notes: Dimensions in inches [millimeters].

Letters in table correspond to letters on dimensional drawing.

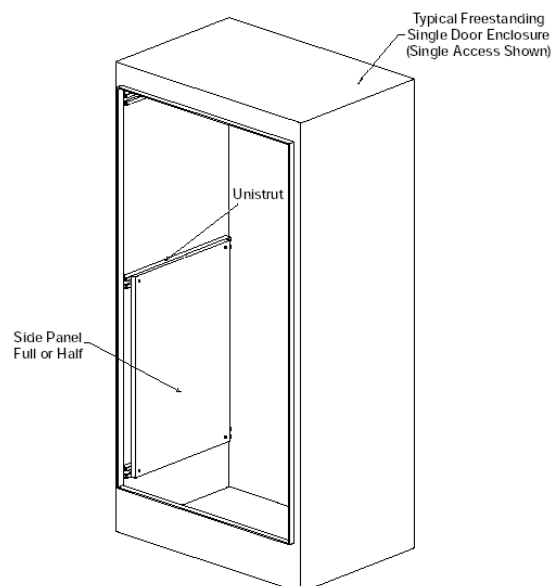
Suffix F1 = full panel, F2 = half panel

Dimensions



Note: Center panel support is supplied with a regular two-door enclosure panel. This support is used only as a brace. It is not intended to be used as a support for single-door subpanels, relay racks, etc. Use WA_FSCPS panel supports for this purpose.

WA-SMP Series Side-Mount Panels for Freestanding Enclosures



Description

- Panels for freestanding NEMA 4 and freestanding NEMA 12 enclosures
- Panels are fabricated from 12-gauge steel
- They provide extra mounting space on the sides of the enclosure
- Mounting hardware is furnished with each panel
- Painted steel subpanels are painted white polyester powder over phosphatized surfaces
- Galvanized subpanels have a conductive finish (no paint)
- Panels attach securely to mounting channels

Shipping Schedule

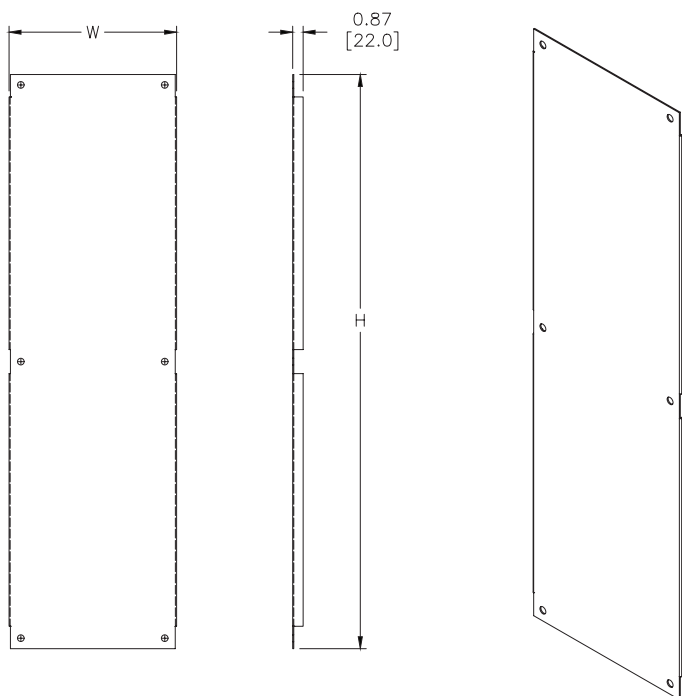
Same day 1 - 5 days 1 - 7 days 1 - 15 days 1 - 20 days

Color indicates shipping lead time in business days.

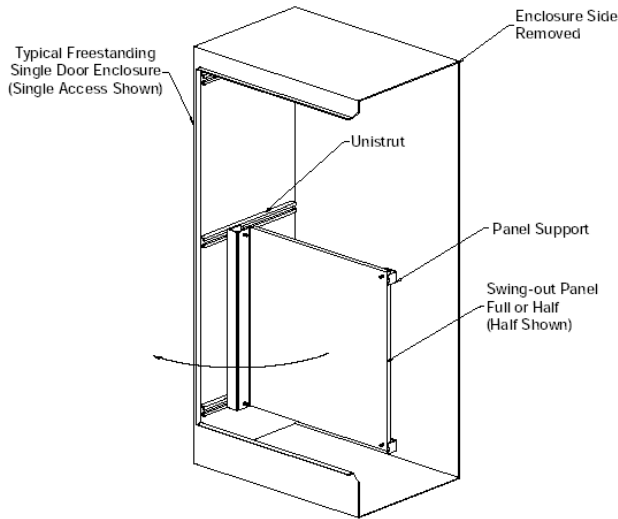
Painted Steel	Price	Galvanized	Price	Panel Size AxB
WA60SMP14	Retired	WA60SMP14G	Retired	48.00 x 14.00 [1219 x 356]
WA72SMP14	\$248.00	WA72SMP14G	Retired	60.00 x 14.00 [1524 x 356]
WA72SMP20	\$303.00	WA72SMP20G	Retired	60.00 x 20.00 [1524 x 508]
WA90SMP14	Retired	WA90SMP14G	Retired	78.00 x 14.00 [1981 x 356]
WA90SMP20	Retired	WA90SMP20G	Retired	78.00 x 20.00 [1981 x 508]

Note: Dimensions in inches [millimeters].

Dimensions



WASP-F3/F4 Series Accessory Swing-Out Panels For Freestanding Enclosures



Description

- Panels for freestanding NEMA 12 enclosures and freestanding NEMA 4 enclosures
- Full-height and half-height swing-out panels are available
- Half-height panels can be located in the upper or lower portion of the enclosure
- Mounting can be on either side of the enclosure
- Painted steel subpanels are painted white polyester powder over phosphatized surfaces
- Galvanized subpanels have a conductive finish (no paint)
- May be used in two-door enclosures along with other freestanding accessories
- Fabricated from 12-gauge steel
- Mounting hardware is furnished with each panel

Shipping Schedule

Same day 1 - 5 days 1 - 7 days 1 - 15 days 1 - 20 days

Color indicates shipping lead time in business days.

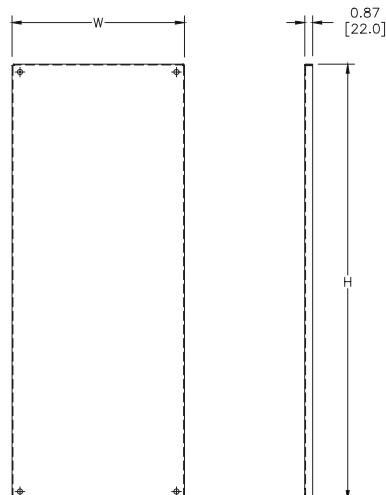
Painted Steel	Price	Galvanized	Price	Panel Size AxB	Subpanel Type
WA60SP24F3	Retired	WA60SP24F3G	Retired	48.00 x 19.00 [1219 x 483]	Full
WA60SP24F4	Retired	WA60SP24F4G	Retired	24.88 x 19.00 [632 x 483]	Half
WA60SP36F3	Retired	WA60SP36F3G	Retired	48.00 x 31.00 [1219 x 787]	Full
WA60SP36F4	Retired	WA60SP36F4G	Retired	24.88 x 31.00 [632 x 787]	Half
WA72SP24F3	Retired	WA72SP24F3G	Retired	60.00 x 19.00 [1524 x 483]	Full
WA72SP24F4	Retired	WA72SP24F4G	Retired	30.88 x 19.00 [784 x 483]	Half
WA72SP30F3	Retired	WA72SP30F3G	Retired	60.00 x 25.00 [1524 x 635]	Full
WA72SP30F4	Retired	WA72SP30F4G	Retired	30.88 x 25.00 [784 x 635]	Half
WA72SP36F3	Retired	WA72SP36F3G	Retired	60.00 x 31.00 [1524 x 787]	Full
WA72SP36F4	Retired	WA72SP36F4G	Retired	30.88 x 31.00 [784 x 787]	Half
WA90SP36F3	Retired	WA90SP36F3G	Retired	78.00 x 31.00 [1981 x 787]	Full
WA90SP36F4	Retired	WA90SP36F4G	Retired	39.88 x 31.00 [1013 x 787]	Half

Notes: Dimensions in inches [millimeters].

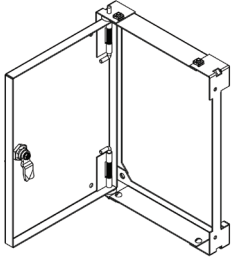
If used in a two-door enclosure, a center panel support must be ordered.

Suffix F3 =full panel, F4 =half panel

Dimensions



Swing-Out Panels for Ultimate Series Enclosures



For N412 Ultimate Series Wall-Mount Enclosures except N412-1PTC, -3PTC, -SS1PTC, -SS3PTC, -SSA1PTC, and -SSA3PTC

- Maximum swing 107°
- Convenient access to sub enclosure is provided via 1/4 turn pull-tab
- On solid doors, the clearance from the swing panel face to the interior door face is 1.25in [31.8mm] on window doors (when the door is closed)
- The kit includes the swing panel, brackets and hardware necessary for a tub flange install. Swing out panels meet 1 with enclosure door open
- Painted steel subpanels are painted white polyester powder over phosphated surfaces
- Fabricated from 14-gauge steel
- Mounting hardware is furnished with each panel

Note: HFWNSPxxxxC swing-out panels will not fit in older NEMA 4/12 enclosures (purchased prior to 3-23-05) that do not have a C suffix. For example: Swing-out panel HFWNSP1212C will not fit enclosures N41212126 or N412121206SS.

Shipping Schedule

Same day 1 - 5 days 1 - 7 days 1 - 15 days 1 - 20 days

Color indicates shipping lead time in business days.

Swing-Out Panels for Ultimate Series Enclosures

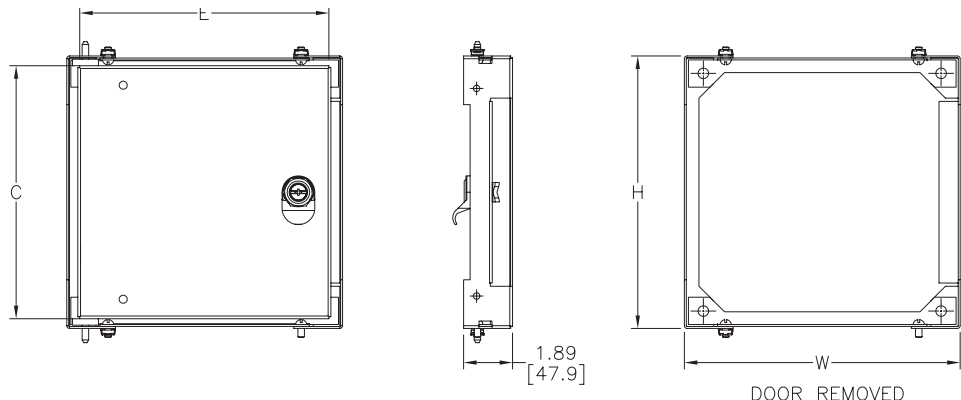
Part Number	Price	Panel Size CxE	Overall Dimensions HxW	Enclosure Nominal Size
HFWNSP1212C	\$134.00	9.75 x 9.75 [248 x 248]	10.50 x 10.62 [267 x 270]	12 x 12
HFWNSP1612C	\$140.00	13.75 x 9.75 [349 x 248]	14.50 x 10.62 [368 x 270]	16 x 12
HFWNSP1616C	\$147.00	13.75 x 13.75 [349 x 349]	14.50 x 14.62 [368 x 37]	16 x 16
HFWNSP1620C	\$168.00	13.75 x 17.75 [349 x 451]	14.50 x 18.62 [368 x 473]	16 x 20
HFWNSP2016C	\$155.00	17.75 x 13.75 [451 x 349]	18.50 x 14.62 [470 x 371]	20 x 16
HFWNSP2020C	\$164.00	17.75 x 17.75 [451 x 451]	18.50 x 18.62 [470 x 473]	20 x 20
HFWNSP2024C	\$188.00	17.75 x 21.75 [451 x 552]	18.50 x 22.62 [470 x 575]	20 x 24
HFWNSP2416C	\$176.00	21.75 x 13.75 [552 x 349]	22.50 x 14.62 [572 x 371]	24 x 16
HFWNSP2420C	\$174.00	21.75 x 17.75 [552 x 451]	22.50 x 18.62 [572 x 473]	24 x 20
HFWNSP2424C	\$185.00	21.75 x 21.75 [552 x 552]	22.50 x 22.62 [572 x 575]	24 x 24
HFWNSP3020C	\$203.00	27.75 x 17.75 [705 x 451]	28.50 x 18.62 [724 x 473]	30 x 20
HFWNSP3024C	\$202.00	27.75 x 21.75 [705 x 552]	28.50 x 22.62 [724 x 575]	30 x 24
HFWNSP3030C	\$223.00	27.75 x 27.75 [705 x 705]	28.50 x 28.62 [724 x 727]	30 x 30
HFWNSP3624C	\$218.00	33.75 x 21.75 [857 x 552]	34.50 x 22.62 [876 x 575]	36 x 24
HFWNSP3630C	\$244.00	33.75 x 27.75 [857 x 705]	34.50 x 28.62 [876 x 727]	36 x 30
HFWNSP3636C	\$269.00	33.75 x 33.75 [857 x 857]	34.50 x 34.62 [876 x 879]	36 x 36

Notes: Dimensions in inches [millimeters].

Letters in table correspond to letters on dimensional drawings.

If used in a two-door enclosure, a center panel support must be ordered.

Dimensions



Accessory Panels For WC14 Series Operator Consoles



Description

- Panels for WC14 Series operator consoles
- Full-height and half-height swing-out panels are available
- Half-height panels can be located in the upper or lower portion of enclosure
- Painted steel subpanels are white polyester powder over phosphatized surfaces
- Fabricated from 14-gauge steel
- Mounting hardware is furnished with each panel

Shipping Schedule

Same day 1 - 5 days 1 - 7 days 1 - 15 days 1 - 20 days

Color indicates shipping lead time in business days.

Accessory Panels for WC14 Operator Consoles

Part Number	Price	Panel Size HxWxD	Subpanel Type
WC14P1	Retired	22.00 x 19.75 x 2.69 [559 x 502 x 68]	Swing
WC14P2	Retired	22.00 x 17.00 x 0.813 [559 x 432 x 21]	Half
WC14P3	Retired	42.25 x 17.00 x 0.81 [1073 x 432 x 21]	Full
WC1436P1	Retired	22.00 x 31.69 x 2.75 [559 x 805 x 70]	Swing
WC1436P2	Retired	22.00 x 29 x 0.81 [559 x 737 x 21]	Half
WC1436P3	Retired	42.25 x 29.00 x 0.81 [1073 x 737 x 21]	Full
WC1448P2	Retired	22.00 x 41.00 x 0.81 [559 x 1041 x 21]	Half
WC1448P3	Retired	42.25 x 41.00 x 0.81 [1073 x 1041 x 21]	Full
WC1460P2	Retired	22.00 x 53.00 x 0.81 [559 x 1346 x 21]	Half
WC1460P3	Retired	42.25 x 53.00 x 0.81 [1073 x 1346 x 21]	Full

Note: Letters in table correspond to letters on dimensional drawings.

Dimensions

