

Floor Stand Kits and Stabilizers



Floor Stand Kits

Floor stand kits can be used to support most wall-mounted Wiegmann enclosures or to elevate freestanding enclosures.

Each kit includes two floor stands and mounting nuts and bolts. Floor stands are installed by drilling holes in the bottom of the enclosure and bolting the floor stands in place.



SSFK1216

Stainless steel floor stand is type 304, 10-gauge stainless with a grained finish.



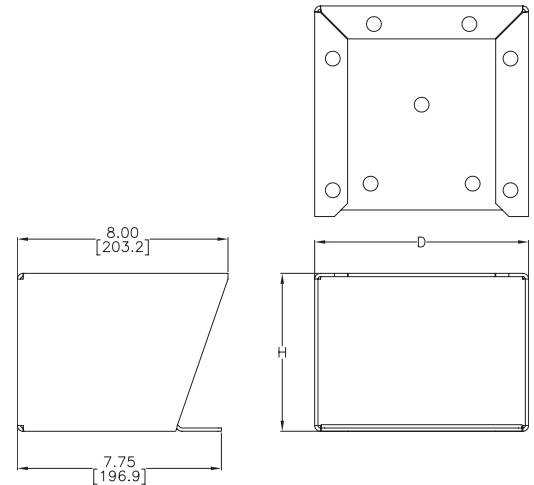
FK0608

Steel floor stand has ANSI 61 gray polyester powder finish over phosphatized surfaces.

Shipping Schedule				
Same day	1 - 5 days	1 - 7 days	1 - 15 days	1 - 20 days
Color indicates shipping lead time in business days.				

Steel Floor Stand Kit	Price	Wt.[lb]	Stainless Steel Floor Stand Kit	Price	Wt.[lb]	Floor Stand Height "H"	Enclosure Depth "D"
FK0608	Retired	19	SSFK0608	Retired	19	6 [152]	8 [203]
FK0610	Retired	21	SSFK0610	Retired	21	6 [152]	10 [254]
FK0612	Retired	23	SSFK0612	Retired	23	6 [152]	12 [305]
FK0618	Retired	31	SSFK0618	Retired	31	6 [152]	18 [457]
FK0624	Retired	50	SSFK0624	Retired	33	6 [152]	24 [610]
FK1208	\$224.00	29	SSFK1208	\$648.00	30	12 [305]	8 [203]
FK1210	\$241.00	34	SSFK1210	\$697.00	27	12 [305]	10 [254]
FK1212	\$258.00	37	SSFK1212	\$658.00	38	12 [305]	12 [305]
FK1216	Retired	42	SSFK1216	Retired	35	12 [305]	16 [406]
FK1218	Retired	45	SSFK1218	Retired	38	12 [305]	18 [457]
FK1220	Retired	50	SSFK1220	Retired	40	12 [305]	20 [508]
FK1224	Retired	60	SSFK1224	Retired	43	12 [305]	24 [610]
FK1808	Retired	40	—	—	—	18 [457]	8 [203]
FK1810	\$292.00	45	—	—	—	18 [457]	10 [254]
FK1812	\$309.00	50	—	—	—	18 [457]	12 [305]
FK1816	Retired	58	—	—	—	18 [457]	16 [406]
FK2408	Retired	52	—	—	—	24 [610]	8 [203]
FK2410	Retired	56	SSFK2410	Retired	57	24 [610]	10 [254]
FK2412	\$359.00	60	SSFK2412	\$1,039.00	61	24 [610]	12 [305]

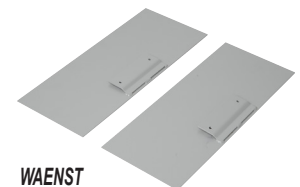
Notes: Dimensions in inches (millimeters).
Letters in table correspond to letters on dimensional drawings.



Stabilizers

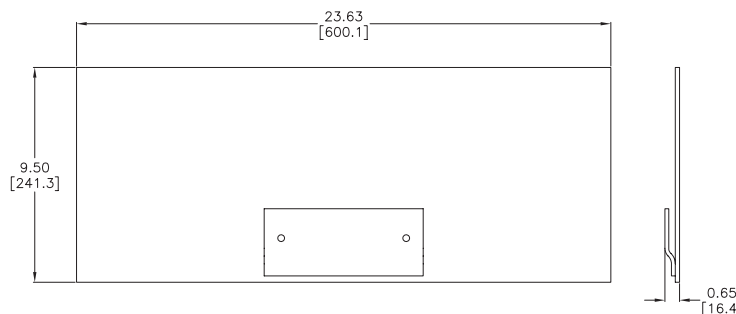
Designed to prevent injury to workers by stabilizing floor-mounted enclosures which are not bolted down. Stabilizers slip under the floor stands and are secured with bolts.

Stabilizers	Price	Description	Wt.[lb]
WAENST	Retired	Wiegmann enclosure stabilizer, ANSI 61 gray powder coat finish. Use to prevent tipping of floor-mounted enclosures which are not bolted down. Package of 2.	29



WAENST

Dimensions



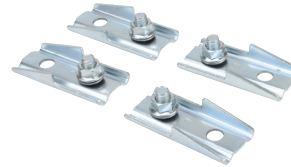
Enclosure Accessories – Mounting Feet and Casters

Mounting Feet for Ultimate Series Enclosures



Shipping Schedule				
Same day	1 - 5 days	1 - 7 days	1 - 15 days	1 - 20 days
Color indicates shipping lead time in business days.				

Mounting Feet	Price	Description	Wt. [lb]
<u>N412MFK</u>	\$28.00	Wiegmann mounting feet kit, plated finish. For use on NEMA 412 Ultimate series enclosures. Includes (4) mounting feet, mounting hardware and sealing washers.	4
<u>N412MFKSS</u>	\$71.00	Wiegmann mounting feet kit, 304 stainless steel. For use on NEMA 412 Ultimate series enclosures. Includes (4) mounting feet, mounting hardware and sealing washers.	4



N412MFK



N412MFKSS

Casters

Casters can be used on any enclosure to provide mobility. Caster kits include mounting plates designed to fit Wiegmann WC10 and WC12 consoles, but can be adapted to fit other enclosures.

Caster Kit	Price	Description	Wt. [lb]	Capacity [lb]
<u>WC10C</u>	Retired	Wiegmann caster kit, for WC10 consoles. Includes 4 zinc-plated steel casters (2 swivel, 2 stationary), 2 ANSI 61 gray mounting plates and hardware.	4	200
<u>WC12C</u>	Retired	Wiegmann caster kit, for WC12 consoles. Includes 4 zinc-plated steel casters (2 swivel, 2 stationary), 2 ANSI 61 gray mounting plates and hardware.	4	200



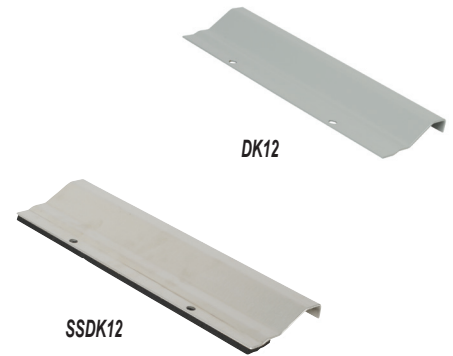
WC12C

Enclosure Accessories –

Drip Shields



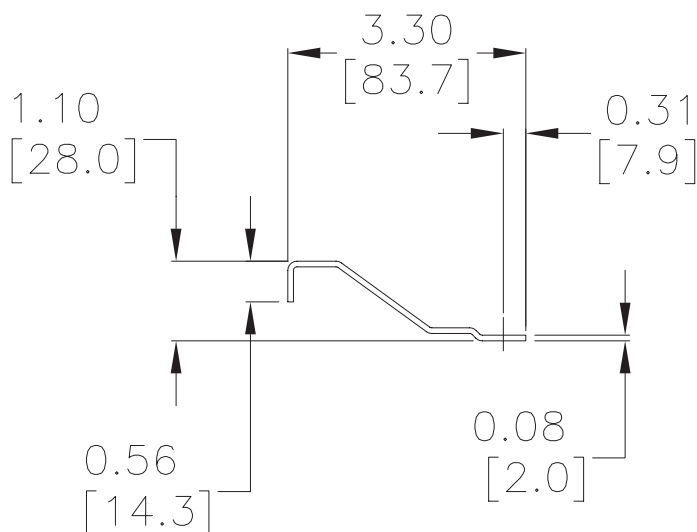
Drip shields attach easily to the enclosure with stainless steel screws, gasket and sealing washers to protect door hardware from dripping water and settling dust. All mounting hardware is included. Stainless steel door clamps are furnished to replace the standard door clamps on kits for enclosures widths up to 36 in [914 mm].



Shipping Schedule					
Same day	1 - 5 days	1 - 7 days	1-10 days	1 - 15 days	1 - 20 days
Color indicates shipping lead time in business days.					

Drip Shield	Price	Material/Finish	For Use With	Wt.[lb]	Description	
DK12	Retired	14-gauge Steel/ANSI 61 gray polyester powder	12in [305mm] NEMA 12 and NEMA 4 enclosures	0.95	Wiegmann enclosure drip shield kit. Includes 2 replacement stainless steel door clamps, integral gasket, and mounting hardware.	
SSDK12	Retired	14-gauge Stainless Steel/grained finish		0.95		
DK16	Retired	14-gauge Steel/ANSI 61 gray polyester powder	16in [406mm] NEMA 12 and NEMA 4 enclosures	1.20		
SSDK16	Retired	14-gauge Stainless Steel/grained finish		0.95		
DK20	Retired	14-gauge Steel/ANSI 61 gray polyester powder	20in [508mm] NEMA 12 and NEMA 4 enclosures	1.59		
SSDK20	Retired	14-gauge Stainless Steel/grained finish		1.20		
DK24	Retired	14-gauge Steel/ANSI 61 gray polyester powder	24in [610mm] NEMA 12 and NEMA 4 enclosures	1.90		Wiegmann enclosure drip shield kit. Includes 3 replacement stainless steel door clamps, integral gasket, and mounting hardware.
SSDK24	Retired	14-gauge Stainless Steel/grained finish		1.59		
DK30	Retired	14-gauge Steel/ANSI 61 gray polyester powder	30in [762mm] NEMA 12 and NEMA 4 enclosures	2.40		
SSDK30	Retired	14-gauge Stainless Steel/grained finish		1.90		
DK36	Retired	14-gauge Steel/ANSI 61 gray polyester powder	36in [914mm] NEMA 12 and NEMA 4 enclosures	2.85		
SSDK36	Retired	14-gauge Stainless Steel/grained finish		2.40		
DK42	Retired	14-gauge Steel/ANSI 61 gray polyester powder	42in [1067mm] NEMA 12 and NEMA 4 enclosures	2.98	Wiegmann enclosure drip shield kit. Includes integral gasket and mounting hardware.	
DK48	Retired		48in [1219mm] NEMA 12 and NEMA 4 enclosures	3.80		
DK60	Retired		60in [1524mm] NEMA 12 and NEMA 4 enclosures	4.75		
DK72	Retired		72in [1829mm] NEMA 12 and NEMA 4 enclosures	5.70		

Dimensions



Enclosure Accessories – Universal Deep-Hinged Window Door



Applications

The Wiegmann Universal Deep Hinged Door is styled after their N 412 Ultimate Series Enclosures. Doors are compatible with any NEMA 3R, 4, 4X, and 12 rated enclosures.

Deep-hinged window doors provide some protection for HMIs or other operator interface devices that are installed on electrical enclosures. This allows for easy access to the devices with a hinged door and 1/4-turn latches. Viewing windows allow the operator to monitor the devices while the door is latched shut, keeping them protected during operation.

Construction

- Quarter-turn style latching for easy access
- Latch type can be changed using N41214 series latches (sold separately)
- Concealed hinges with removable pins
- Fabricated from 14-gauge carbon steel or 14-gauge 304 stainless steel

Finish

- Carbon steel models have an ANSI 61 gray light-textured polyester powder finish
- Stainless steel models have a #3 intermediate polished finish
- Polycarbonate viewing window for clear visibility
- Drill template and mounting hardware provided
- Door and mounting surface are sealed with poured-in-place polyurethane gasket

Listings

- UL Recognized type 3R, 4, 12, and 4X (SS only) [UL File E64791]
- IP66
- CSA Type 3R, 4, 12 and 4X (SS only) [CSA File 222873]



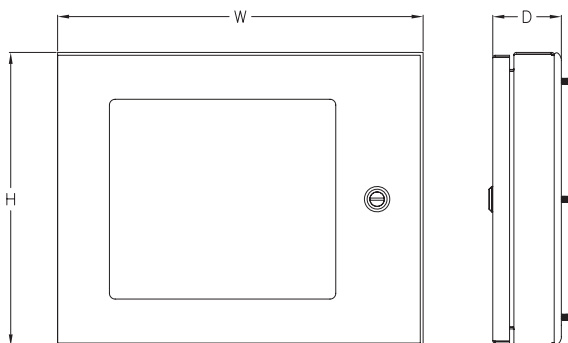
Shipping Schedule					
Same day	1 - 5 days	1 - 7 days	1-10 days	1 - 15 days	1 - 20 days

Color indicates shipping lead time in business days.

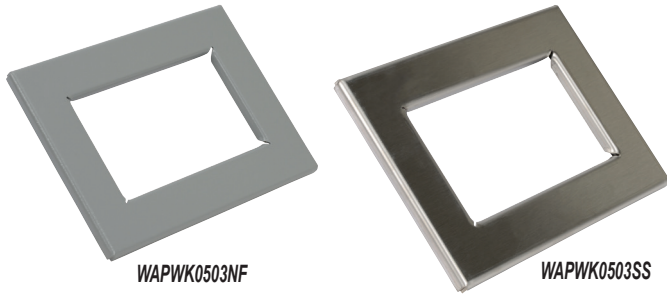
Enclosure Accessories – Universal Deep-Hinged Window Door									
ANSI 61 Gray Steel	Price	304 Stainless Steel	Price	Height	Width	Depth	Window Height	Window Width	Wt. (lb)
WADW131602	\$567.00	WADW131602SS	\$966.00	12.75 [324]	15.88 [403]	2.75 [70]	8.68 [220]	9.83 [250]	11.0
WADW150902	Retired	WADW150902SS	Retired	14.75 [375]	9.5 [241]		10.68 [271]	3.41 [87]	8.0
WADW191302	Retired	WADW191302SS	Retired	18.75 [476]	13.5 [343]		14.68 [373]	7.41 [188]	14.0
WADW231302	Retired	WADW231302SS	Retired	22.75 [578]	13.5 [343]		18.68 [474]	7.41 [188]	17.0
WADW231702	Retired	WADW231702SS	Retired	22.75 [578]	17.5 [445]		18.68 [474]	11.41 [290]	21.0
WADW232602	Retired	WADW232602SS	Retired	22.75 [578]	26.25 [667]		18.68 [474]	20.22 [514]	32.0
WADW292002	Retired	WADW292002SS	Retired	28.75 [731]	20.25 [514]		24.68 [627]	14.22 [361]	31.0

Notes: Dimensions in inches [millimeters].
Cutout dimension: Height - 3 [76], Width - 3 [76]

Dimensions



Enclosure Accessories – Window Kits



Construction

- Steel has ANSI 61 gray powder coat finish
- 304 Stainless steel has grained finish
- Makrolon polycarbonate window
- Integral closed-cell gasket and mounting hardware
- Steel windows for indoor use with NEMA 12
- Stainless steel windows for indoor use with NEMA 12 and 13 enclosures

Applications

Window kits are easily installed by making a cutout in the enclosure and attaching the window and frame in place. All necessary hardware is included. Kits are fully gasketed to maintain a NEMA 12/ NEMA 13 oil-tight seal.

Shipping Schedule					
Same day	1 - 5 days	1 - 7 days	1-10 days	1 - 15 days	1 - 20 days
Color indicates shipping lead time in business days.					

ANSI 61 Gray Steel	Price	304 Stainless Steel	Price	Wt.[lb]	Window Size	Frame Size	Required Cutout Size
WAPWK0503NF	\$158.00	WAPWK0503SS	Retired	2.2	5.00 x 3.00 [127 x 76]	7.50 x 5.50 [191 x 140]	6.69 x 4.69 [170 x 119]
WAPWK0905NF	\$191.00	WAPWK0905SS	Retired		9.00 x 5.50 [229 x 140]	11.50 x 8.00 [292 x 203]	10.69 x 7.19 [272 x 183]
WAPWK1308NF	Retired	WAPWK1308SS	Retired	3.1	13.00 x 8.00 [330 x 203]	15.50 x 10.50 [394 x 267]	14.69 x 9.69 [373 x 170]
WAPWK1705NF	Retired	—	—	4.4	17.00 x 5.50 [432 x 140]	19.50 x 8.00 [495 x 203]	18.69 x 7.19 [475 x 183]
WAPWK1711NF	Retired	WAPWK1711SS	Retired	6.8	17.00 x 11.00 [432 x 279]	19.50 x 13.50 [495 x 343]	18.69 x 12.69 [475 x 322]
WAPWK2315NF	Retired	WAPWK2315SS	Retired	8.2	23.00 x 15.00 [584 x 381]	25.50 x 17.50 [648 x 445]	24.69 x 16.69 [627 x 424]
WAPWK2919NF	Retired	—	—	10.9	29.00 x 19.00 [737 x 483]	31.50 x 21.50 [800 x 546]	30.69 x 20.69 [780 x 526]
WAPWK3523NF	Retired				35.00 x 23.00 [889 x 584]	37.50 x 25.50 [953 x 648]	36.69 x 24.69 [932 x 627]

Notes: Dimensions in inches [millimeters].

Enclosure Accessories – Adapter Plates for Disconnect Enclosures

Shipping Schedule

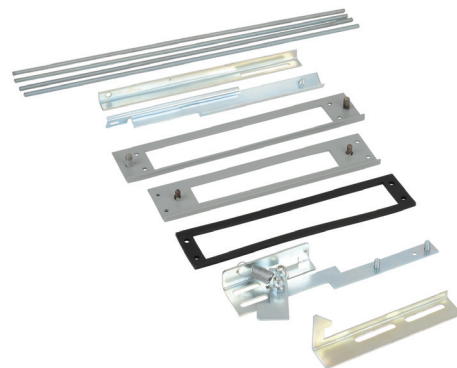
Same day 1 - 5 days 1 - 7 days 1 - 15 days 1 - 20 days

Color indicates shipping lead time in business days.



Operator Adapter Plates

An operator adapter plate is required to install a disconnect in all Wiegmann WA series enclosures with a universal flange cutout. Operator adapters include an adapter plate and additional parts used to interlock the enclosure door with the disconnect operating mechanism. Panel drilling and installation instructions are furnished with each adapter. Each brand and type of disconnect requires a different operator adapter. It is important to select the proper operator adapter and enclosure for the disconnect that you have selected.



Operator Adapter Plates

Part Number	Price	Description	Wt. [lb]
WA21ABA	Retired	Wiegmann operator adapter plate, for use with Allen-Bradley 1494F and 1494D series devices	3
WA21ABVA	Retired	Wiegmann operator adapter plate, for use with Allen-Bradley 1494V, 140U, 1494C, 194RC series devices	
WA21CHVA	\$176.00	Wiegmann operator adapter plate, for use with Eaton/Cutler Hammer flange mounted handle mechanisms type C371, Eaton Flex-Shaft F0S03C, F1S03/06C F3S03C, F4S04C, and ABB Controls disconnects	2
WA21FUFA	\$149.00	Wiegmann operator adapter plate, for use with Fuji Electric BW9F series disconnects	3
WA21GETDA	Retired	Wiegmann operator adapter plate, for use with General Electric STDA series disconnects	2
WA21ITE	Retired	Wiegmann operator adapter plate, for use with Siemens ITE Max-Flex series disconnects	
WA21SDA	\$176.00	Wiegmann operator adapter plate, for use with Socomec 37299002 and 37299003 disconnect handles. Also fits Schneider Square D Class 9422 disconnect handles.	

Blank Adapter Plates

These adapter plates are used to cover flange cutouts in disconnect enclosures when disconnects are not installed. This greatly increases the versatility of the disconnect enclosures, enabling them to also be used as regular 12 enclosures.

Wiegmann blank adapter plates are made from heavy gauge steel, with oil-resistant gasket to maintain the dust-tight and oil-tight qualities of the enclosure. All blank adapter plates are painted ANSI 61 gray polyester powder. All necessary mounting hardware and instructions are included.



Blank Adapter Plates

Part Number	Price	Description	Wt. [lb]
WA21BAP	Retired	Wiegmann blank adapter plate assembly, ANSI 61 gray. For use with all Wiegmann carbon steel floor-mount and freestanding disconnect enclosures. Includes mounting hardware.	2
WA22BAP	Retired	Wiegmann blank adapter plate. For use with ABN12 disconnect enclosures. Includes mounting hardware.	2
WA3456BAP	\$149.00	Wiegmann blank adapter plate. For use with all Wiegmann wall-mount disconnect enclosures except ABN12 models and all Wiegmann stainless steel floor-mount and freestanding disconnect enclosures. Includes mounting hardware.	2

Enclosure Accessories – Hole Seals and Plugs



Hole Seals for Metal Enclosures

Designed to seal extra pushbutton holes, conduit openings, and knockout openings in metal enclosures from dirt, dust, oil and water. Conduit hole sizes are nominal trade sizes, not actual hole sizes. (Example: 1 in [25 mm] conduit actual diameter = 1.315in [33.4mm]).



Shipping Schedule

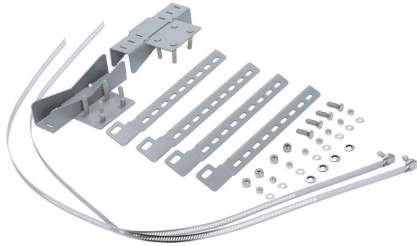
Same day 1 - 5 days 1 - 7 days 1 - 15 days 1 - 20 days

Color indicates shipping lead time in business days.

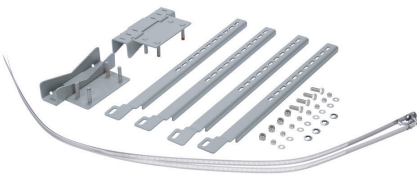
<i>Steel Hole Seals with ANSI 61 Gray Polyester Powder</i>	<i>Price</i>	<i>Stainless Steel Hole Seals with Grained Finish</i>	<i>Price</i>	<i>Description</i>	<i>Hole Diameter</i>	<i>Wt. [lb]</i>
<u>WAS050</u>	\$7.75	<u>WAS050SS</u>	\$16.50	Wiegmann conduit hole seal, 0.5in [13mm], quick wing nut, oil-resistant gasket	0.87 [22]	0.1
<u>WAS075</u>	\$9.50	<u>WAS075SS</u>	\$23.00	Wiegmann conduit hole seal, 0.75in [19 mm], quick wing nut, oil-resistant gasket	1.14 [29]	
<u>WAS100</u>	\$13.00	<u>WAS100SS</u>	\$30.50	Wiegmann conduit hole seal, 1.00in [25mm], quick wing nut, oil-resistant gasket	1.38 [35]	
<u>WAS125</u>	\$16.00	<u>WAS125SS</u>	\$32.50	Wiegmann conduit hole seal, 1.25in [31.8mm], quick wing nut, oil-resistant gasket	1.61 [41]	0.2
<u>WAS150</u>	\$18.00	<u>WAS150SS</u>	\$36.50	Wiegmann conduit hole seal, 1.5in [38mm], quick wing nut, oil-resistant gasket	2.00 [51]	0.3
<u>WAS200</u>	\$20.00	<u>WAS200SS</u>	\$44.50	Wiegmann conduit hole seal, 2.00in [51mm], quick wing nut, oil-resistant gasket	2.52 [64]	
<u>WAS250</u>	\$23.50	—	—	Wiegmann conduit hole seal, 2.50in [64mm], quick wing nut, oil-resistant gasket	3.00 [76]	0.4
<u>WAS300</u>	\$31.00	—	—	Wiegmann conduit hole seal, 3.00in [76mm], quick wing nut, oil-resistant gasket	3.62 [92]	
<u>WAS350</u>	\$44.00	—	—	Wiegmann conduit hole seal, 3.50in [89mm], quick wing nut, oil-resistant gasket	4.13 [105]	
<u>WAS400</u>	\$56.00	—	—	Wiegmann conduit hole seal, 4.00in [102mm], quick wing nut, oil-resistant gasket	4.64 [118]	0.6
<u>WASPB</u>	\$10.00	<u>WASPBSS</u>	\$25.50	Wiegmann hole seal, for 30mm [1.18 in] pushbutton cutout, quick wing nut, oil-resistant gasket	1.18 [30]	0.1
<u>WASPBG</u>	\$7.75	<u>WASPBGSS</u>	\$16.50	Wiegmann hole seal, for 22mm [0.87 in] pushbutton cutout, quick wing nut, oil-resistant gasket	0.87 [22]	

Note: Dimensions in inches [millimeters].

Enclosures Accessories Pole-Mounting Kits



PMKSML -
for Small Enclosures



PMKLRG -
for Large Enclosures

Features

- Universal design provides flexibility across various enclosure widths
- Design allows for single-person installation
- 14in [356mm] maximum pole diameter
- Maximum weight limit of 350lb [159kg]

Construction

- All kits include galvanized steel strut rails and plated steel fasteners
- Kits for 9.50-12.0 in [241-305 mm] diameter poles include galvanized steel band clamps and brackets. All other kits include galvanized steel pipe clamps

Listings

- UL recognized components for 1, 4, 12 and 4X (SS only)
- IP66 recognized component



Shipping Schedule

Same day 1 - 5 days 1 - 7 days 1 - 15 days 1 - 20 days

Color indicates shipping lead time in business days.

Enclosures Pole-Mounting Kits

Part Number	Price	Material	Pole Diameter	Kit Includes	Weight Limit (lb)
PMKSML	\$266.00	Carbon Steel	14in	mounting brackets, mounting straps, and fasteners	350
PMKSMLSS	\$464.00	Stainless Steel			
PMKLRG	\$323.00	Carbon Steel			
PMKLRGSS	\$563.00	Stainless Steel			

Enclosure Accessories – Folding Shelves and Grounding

Shipping Schedule

Same day	1 - 5 days	1 - 7 days	1 - 15 days	1 - 20 days
Color indicates shipping lead time in business days.				



Folding Shelf

Designed to support equipment that is used to install and maintain electrical components in an enclosure.

When not in use, the shelf folds down and projects only one inch.



WACSHELF12

Folding Shelf	Price	Description	Shelf Dimensions	Wt. [lb]
<u>WACSHELF12</u>	Retired	Wiegmann enclosure folding shelf, 12 x 12.00in [51mm], heavy gauge steel, ANSI 61 gray powder coat finish. Includes mounting hardware. Installs inside or outside of enclosure. Weight limit: 35 lbs.	12 x 12 [305 x 305]	18
<u>WACSHELF18</u>	Retired	Wiegmann enclosure folding shelf, 18 x 18 inch, heavy gauge steel, ANSI 61 gray powder coat finish. Includes mounting hardware. Installs inside or outside of enclosure. Weight limit: 35 lbs.	18 x 18 [457 x 457]	23

Note: Dimensions in inches [millimeters].

Enclosure Grounding

Grounding kits or straps can be used to ensure proper electrical grounding.

Grounding Kit	Price	Description	Wt. [lb]
<u>WGNDKT</u>	\$3.25	Wiegmann field grounding kit, required for CSA certification on RSC (NEMA 3R) and SC (NEMA 1) series enclosures. Includes aluminum grounding lug and mounting hardware. Accepts wire size up to 5 AWG.	<1
<u>WGS1008</u>	\$12.50	Wiegmann enclosure grounding strap, 8 inch length. Wire size: 10AWG	<1
<u>WGS1016</u>	\$12.50	Wiegmann enclosure grounding strap, 16 inch length. Wire size: 10AWG	<1



WGNDKT



WGS1008

Enclosure Accessories – Locks and Latches

NEMA 412 Ultimate Series Tamper-Resistant Latch Kits and Keys



Shipping Schedule				
Same day	1 - 5 days	1 - 7 days	1 - 15 days	1 - 20 days
Color indicates shipping lead time in business days.				



N41214TTRI



N41214SQ



N41214TVP



N41214TTRIK



N41214SQK



N41214TVPK

Tamper-Resistant Latches						Tamper-Proof Keys				
1-point	Price	Wt.[lb]	3-point	Price	Wt.[lb]	Description	Latch Key	Price	Wt.[lb]	Description
N41214TTRI	\$36.00	0.2	N41214TTRI3	Retired	2.2	Wiegmann enclosure latch, 1/4 turn, triangular. For use on NEMA 412 Ultimate series enclosures. N41214TTRIK key required, purchased separately.	N41214TTRIK	Retired	0.1	Wiegmann enclosure latch key, triangular. For use on N41214TTRI, N41214TTRI3 latches.
N41214SQ	Retired	0.2	N41214SQ3	Retired	2.2	Wiegmann enclosure latch, 1/4 turn, square. For use on NEMA 412 Ultimate series enclosures. N41214TSQK key required, purchased separately.	N41214SQK	Retired	0.1	Wiegmann enclosure latch key, square. For use on N41214SQ, N41214SQ3 latches.
N41214TVP	\$63.00	0.2	N41214TVP3	Retired	2.5	Wiegmann enclosure latch, 1/4 turn, vibration proof. For use on NEMA 412 Ultimate series enclosures. N41214TVPK key required, purchased separately.	N41214TVPK	\$27.50	0.1	Wiegmann enclosure latch key, double bit vibration proof. For use on N41214TVP, N41214TVP3 latches.

Enclosures

The latches and keys on this page are used with the following enclosure series:

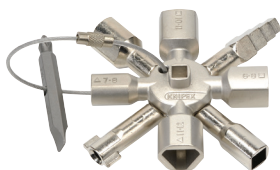
- BN4_CHQT*
- BN4_CHQTSS*
- BN4_CHQTSSA*
- CTSD*
- RHC "Medium"*
- N412_C
- N412_CLG
- N412_WC
- N412_WCLG
- N412_CST
- N412_SSC
- N412_SSAC
- N412_WSSC
- N412_CSSST
- N1C
- N1C_LP

*Must use cam from stock latch.

Enclosure series example:

Enclosure part number N412121206C = N412_C series.

Optional Single-Door Latch Kit Tools



001101

Pliers Sets and Accessories				
Part Number	Description	Wt.	Pcs/Pkg	Price
001101	Twin universal control cabinet key. Two 4-way wheel wrenches connected in a space-saving way with magnets. Includes lock profiles: square (5-6, 7-8, 9-10, 11mm), triangular (7, 8-9, 10-11, 12mm), double-bit (3-5mm), half-moon (6mm), stepped square (6-9mm), reversing bit (slot 1x7mm, cross-recess PH2). Die-cast zinc material.	0.31 lb [140 g]	1	Retired

Enclosure Accessories – Locks and Latches

NEMA 412 Ultimate Series Lock Kits



Shipping Schedule				
Same day	1 - 5 days	1 - 7 days	1 - 15 days	1 - 20 days
Color indicates shipping lead time in business days.				



N41214T



N41214TB



N41214TSS



N41214TW



N41214TWPL



N41214TTH

NEMA 412 Lock Kits						
1-point	Price	Wt. [lb]	3-point	Price	Wt. [lb]	Description
N41214T	\$27.00	0.2	N41214T3	\$60.00	2.5	Wiegmann enclosure latch, slotted, 1/4 turn. For use on NEMA 412 Ultimate series enclosures.
N41214TB	Retired	0.1	N41214TB3	Retired	2.5	Wiegmann enclosure latch, slotted, 1/4 turn, black finish. For use on NEMA 412 Ultimate series enclosures.
N41214TW	\$60.00	0.2	N41214TW3	Retired	2.2	Wiegmann enclosure latch, wing handle, 1/4 turn. For use on NEMA 412 Ultimate series enclosures.
N41214TWPL	\$60.00	0.3	N41214TWPL3	Retired	2.4	Wiegmann enclosure latch, padlocking, 1/4 turn. For use on NEMA 412 Ultimate series enclosures.
N41214TTH	\$106.00	0.3	N41214TTH3	Retired	2.3	Wiegmann enclosure latch, tee handle, 1/4 turn, black finish. For use on NEMA 412 Ultimate series enclosures.
N41214TTHKL	\$103.00	0.4	N41214TTH3KL	Retired	2.4	Wiegmann enclosure lock kit, 1/4 turn, key locking, black matte finish. For use on NEMA 412 Ultimate series enclosures.
N41214TBKL *	\$106.00	0.2	—	—	—	Wiegmann enclosure latch, black key and dust cover, 1/4 turn. For use on NEMA 412 Ultimate series enclosures.
N41214TSS	\$72.00	0.2	—	—	—	Wiegmann enclosure latch, 304 stainless steel, 1/4 turn. For use on NEMA 412 Ultimate series stainless steel enclosures with one-point latch. No key required
N41214TSS3	\$230.00	2.2	—	—	—	Wiegmann enclosure latch, 304 stainless steel, 1/4 turn. For use on NEMA 412 Ultimate series stainless steel enclosures with 3-point latch. No key required.

*NEMA 12 and 13 rating with dust cover only.

Enclosures

The latches and keys on this page are used with the following enclosure series:

- BN4_CHQT*
- BN4_CHQTSS*
- BN4_CHQTSSA*
- CTSD*
- RHC "Medium"*
- N412_C
- N412_CLG
- N412_WC
- N412_WCLG
- N412_CST
- N412_SSC
- N412_SSAC
- N412_WSSC
- N412_CSSST
- N1C
- N1C_LP

*Must use cam from stock latch.

Enclosure series example:

Enclosure part number N412121206C = N412_C series.

Enclosure Accessories – Locks and Latches

NEMA 1 1/4-Turn Latch



Shipping Schedule

Same day 1 - 5 days 1 - 7 days 1 - 15 days 1 - 20 days

Color indicates shipping lead time in business days.

Latch	Price	Description	Wt. [lb]
<u>N1C14T</u>	\$48.00	Wiegmann enclosure latch, 1/4 turn, plated steel. For use on NEMA 1 enclosures. No key required.	0.2
<u>N1C14TKL</u>	\$60.00	Wiegmann enclosure latch, 1/4 turn key lock, plated steel and plastic construction. For use on NEMA 1 enclosures. Includes key.	0.2



N1C14TKL



N1C14T

Enclosures

The latches and keys on this page are used with the following enclosure series:

- N1C
- N1C_LP
- RHC "Medium"*
- CTSD

*Must use cam from stock latch.

Enclosure series example:

Enclosure part number N1C201606LP = N1C_LP series.

Enclosure Accessories – Locks and Latches

Latch Kits for Single Door NEMA 3R, NEMA 4, and NEMA 12 Enclosures



Shipping Schedule

Same day 1 - 5 days 1 - 7 days 1 - 15 days 1 - 20 days

Color indicates shipping lead time in business days.

Latch Kits for Single Door NEMA 3R and NEMA 12 Enclosures

Padlock Style	Price	Wt. [lb]	Keylock Style	Price	Wt. [lb]	Description
WAL1A	Retired	1.7	WAL2A	Retired	0.9	Wiegmann enclosure latch kit, 1-point. For use on single door NEMA 12 enclosures.
WAL1B	Retired	2.8	WAL2B	Retired	2.0	Wiegmann enclosure latch kit, 3-point. For use on NEMA 12 enclosures where height is 16, 20, 24 or 30 inches.
WAL1C	\$203.00	3.8	WAL2C	Retired	2.8	Wiegmann enclosure latch kit, 3-point. For use on NEMA 12 enclosures where height is 36, 42 or 48 inches.
WAL1D	\$201.00	4.8	WAL2D	Retired	4.0	Wiegmann enclosure latch kit, 3-point. For use on NEMA 12 enclosures where height is 60 or 72 inches.
—	—	—	WAL2KEY	Retired	0.1	Wiegmann enclosure key, replacement, for WAL2A, WAL2B, WAL2C, WAL2D locks.

Enclosures

The locks and lock kits on this page are used with the following enclosure series: CTDD

- WA_WF

Enclosure series example:

Enclosure part number WA364812WF = WA_WF series



WAL2A



WAL1A

Enclosure Accessories – Locks and Latches

Latch Kits for Stainless Steel Single-Door NEMA 4 and NEMA 4X Enclosures



WAL3A



WAL4A



WAL3ASS

Shipping Schedule

Same day	1 - 5 days	1 - 7 days	1-10 days	1 - 15 days	1 - 20 days
----------	------------	------------	-----------	-------------	-------------

Color indicates shipping lead time in business days.

Latch Kits for Single Door NEMA 4 and NEMA 4X Enclosures

Padlock Style	Price	Wt. [lb]	Stainless Steel Padlock Style	Price	Wt. [lb]	Combo Key/ Padlock Style	Price	Wt. [lb]	Description
WAL3A	Retired	2.7	WAL3ASS	Retired	2.7	WAL4A	Retired	2.6	Wiegmann enclosure latch kit, 1-point, black matte finish. For use on single-door NEMA 4 / 4X enclosures.
WAL3B	Retired	3.8	WAL3BSS	\$145.00	3.8	WAL4B	Retired	3.4	Wiegmann enclosure latch kit, 3-point, black matte finish. For use on NEMA 4 / 4X enclosures where height is 16, 20, 24 or 30 inches.
WAL3C	Retired	4.6	WAL3CSS	\$145.00	4.5	WAL4C	Retired	4.3	Wiegmann enclosure latch kit, 3-point, black matte finish. For use on NEMA 4 / 4X enclosures where height is 36, 42 or 48 inches.
WAL3D	Retired	5.4	WAL3DSS	\$145.00	5.8	WAL4D	\$94.00	5.4	Wiegmann enclosure latch kit, 3-point, black matte finish. For use on NEMA 4 / 4X enclosures where height is 54 to 90 inches.
—	—	—	—	—	—	WAEMKA4	Retired	0.1	Wiegmann enclosure key, replacement, for WAL4 series combination key / padlock handles.

WAL Latch Kits

These latch kits are used with the following enclosure series:

- WA_FS
- WA_FSD
- WA_FSDA
- WA_FSDAD
- WA_E
- N4D_3PT
- WA_FSN43PT
- WRD_FS4
- WRD_FSD4
- N12 "Floor-Mount"
- N412_1PTC
- N412_3PTC

WAL_SS Latch Kits

These latch kits are used with the following enclosure series:

- N412_SS1PTC
- N412_SSA1PTC
- N412_SS3PTC
- N412_SSA3PTC
- SSN4_WF3PT
- SSN4_3PT
- SSN4_3PTA
- SSN4_3PTW
- SSN4D_3PT
- SSN4D_3PTA
- WA_SSFSDN43PT
- WA_SSFSDN43PT
- WA_FSSS
- WA_FSDSS

Enclosure series example:

Enclosure part number N4122416083PTC
= N412_3PTC series

Enclosure Accessories – Locks and Latches

Lock Kit for NEMA 4 and NEMA 12 Enclosures

This kit is designed for use as an add-on to enclosures sold without locks. Lock and key are sold separately.



Shipping Schedule					
Same day	1 - 5 days	1 - 7 days	1-10 days	1 - 15 days	1 - 20 days
Color indicates shipping lead time in business days.					

Lock Kit for NEMA 4 and NEMA 12 Enclosures			
Part Number	Price	Description	Wt. [lb]
<u>WACLSN12</u>	\$34.50	Wiegmann enclosure latch with key, 1-point, plated steel. For use on NEMA 4 and NEMA 12 enclosures.	0.3
<u>WACLSN12KEY</u>	Retired	Wiegmann replacement enclosure key, for WACLSN12 lock	0.1



Lock Kits for Junction Boxes

These locks kits with keys are designed for use with junction boxes that are sold without locks.



Junction Box Lock Kits			
Part Number	Price	Description	Wt. [lb]
<u>WACLJIC</u>	Retired	Wiegmann junction box lock kit, 1-point, cylinder key. For use on single door JIC, BxxxxCH, BN4XxxxCH series enclosures. Includes key.	0.3
<u>WAPLKJIC</u>	Retired	Wiegmann junction box padlock kit, plated steel. For use on single door JIC, BxxxxCH, BN4XxxxCH series enclosures. Includes mounting hardware. Padlock not included.	0.1

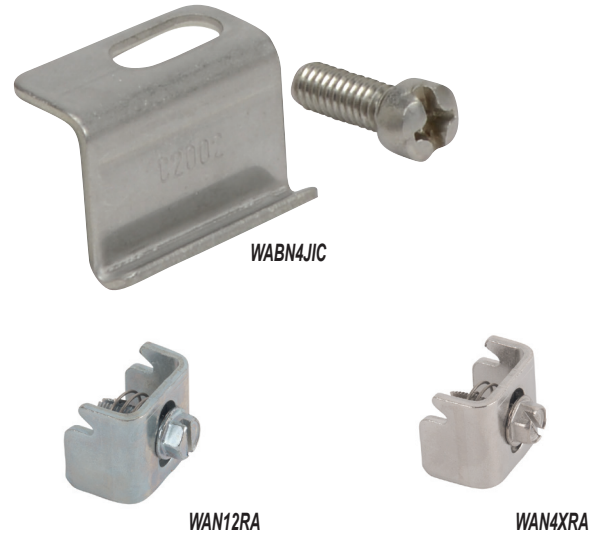
Enclosure Accessories – Locks and Latches



Shipping Schedule				
Same day	1 - 5 days	1 - 7 days	1 - 15 days	1 - 20 days
Color indicates shipping lead time in business days.				

Replacement Clamp Assemblies

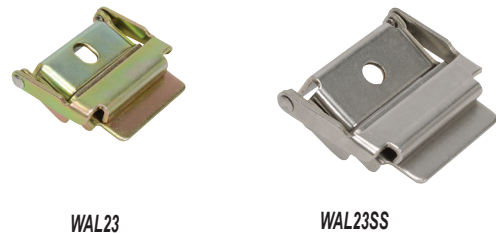
Part Number	Price	Description	Wt. [lb]
<u>WABN4JIC</u>	\$25.00	Replacement, 304 stainless steel. For use with BN4xxxxxx and BN4xxxxxxCH enclosures. Clamp and screw	0.1
<u>WAN12RA</u>	\$24.00	Replacement, plated steel. For use with NEMA 12 enclosures.	0.10.5
<u>WAN4XRA</u>	\$35.00	Replacement, 304 stainless steel. For use with NEMA 4X enclosures.	0.1



Fast Operating Junction Box Clamps

Provides quick access to enclosure or wireway interiors. Install on standard clamp bracket used on Wiegmann junction boxes, NEMA 12 troughs, and lay-in wireway.

Part Number	Price	Description	Wt. [lb]
<u>WAL23</u>	Retired	Plated steel clamp	0.3
<u>WAL23SS</u>	Retired	304 stainless steel	0.2



Enclosure Accessories – Electrical Interlocks and Defeater

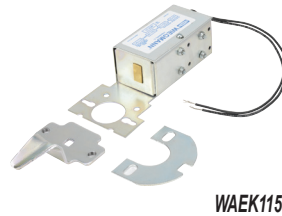


Electrical Interlocks

The WAEK115 is designed to be used with standard Wiegmann door latching mechanisms. When energized, this interlock will prevent the door handle from being turned. This interlock is designed to fit handles in the following enclosures:

- All two-door NEMA 12 enclosures
- Freestanding NEMA 12 enclosures
- All consoles
- All single-door NEMA 12 enclosures which have three-point handle mechanisms
- Multi-door NEMA 12 enclosures

The WAEK115NDH is designed to be used with standard Wiegmann enclosures that have no handles. This interlock requires drilling several holes in the cover and the body for mounting.



WAEK115



WAEK115NDH

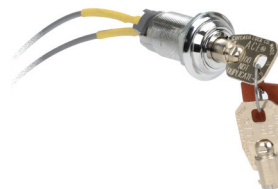
Shipping Schedule				
Same day	1 - 5 days	1 - 7 days	1 - 15 days	1 - 20 days
Color indicates shipping lead time in business days.				

Interlocks	Price	Description	Volts/Hz	Wt. [lb]
WAEK115	\$245.00	Wiegmann enclosure interlock defeater. key-operated, to disengage interlocks WAEK115 / WAEK115NDH.	120/60	0.2
WAEK115NDH	\$305.00	Wiegmann enclosure electrical interlock, Prevents entry into energized enclosure that has no door handle.	120/60	0.2

Interlock Defeater

This defeater is key-operated and enables personnel to enter an enclosure while the enclosure's internal components are energized. Turning the key disengages the circuit to the electrical interlock.

Interlock Defeater	Price	Description	Wt. [lb]
WAEKDF	\$109.00	Wiegmann enclosure interlock defeater, key-operated, to disengage interlocks WAEK115 / WAEK115NDH	0.2



Enclosure Accessories – Panel Mounting



JIC and NEMA Swing-Out Panel Kits

Swing-out panel kits are designed to allow mounting of switches, pilot lights and other components near the front of the enclosure for easy access or meter reading.

Sealing washers are included to ensure that the enclosure will meet the original NEMA rating after installation.

These kits are designed for use with standard Wiegmann JIC and NEMA panels. They do not work with N412xxx Ultimate Series enclosures or HW-XXXX series non-metal enclosures.



WAJCDFK



WANADFK

Shipping Schedule					
Same day	1 - 5 days	1 - 7 days	1-10 days	1 - 15 days	1 - 20 days
Color indicates shipping lead time in business days.					

Panel Kits	Price	Description	Wt. [lb]
<u>WAJCDFK</u>	Retired	Plated steel. For use with Bxxxx, WAxxxxGIE, JICxxxx, BN4xxxx enclosures. Includes (2) hinge brackets, (2) fixed brackets, and mounting hardware.	1
<u>WANADFK</u>	Retired	Plated steel. For use with single and double-door style enclosures except Bxxxx, WAxxxxGIE, JICxxxx and BN4xxxx. Includes (2) hinge brackets, (2) fixed brackets, and mounting hardware.	3

Note: Panels must be ordered separately from enclosure.

Panel Supports

Panel supports provide additional support for panels on which heavy instruments are mounted.

They are adjustable so the weight of the panel is partially supported by the bottom of the enclosure.



WAPS03

Panel Supports	Price	Description	Wt. [lb]
<u>WAPS03</u>	Retired	Wiegmann enclosure panel support foot, white polyester powder finish, for single and two-door enclosures where distance between bottom of panel and enclosure is less than 2.25 inches. Package of 2. Load limit: 250 lbs.	1
<u>WAPS09</u>	Retired	Wiegmann enclosure panel support foot, white polyester powder finish, for free-standing enclosures where distance between bottom of panel and enclosure is less than 8.5 inches and greater than 2.88 inches. Package of 2. Load limit: 250 lbs.	2

Center Panel Supports for Freestanding Enclosures

Center Panel Supports	Price	Description	Wt. [lb]
<u>WA60FSCPS</u>	Retired	Wiegmann enclosure center panel support, white polyester powder finish, for 60 inch high enclosures. Allows two single-wide sub-panels (including swing-out panels and rack mount frames) to be mounted in a double-door enclosure.	15
<u>WA72FSCPS</u>	Retired	Wiegmann enclosure center panel support, white polyester powder finish, for 72 inch high enclosures. Allows two single-wide sub-panels (including swing-out panels and rack mount frames) to be mounted in a double-door enclosure.	21
<u>WA90FSCPS</u>	Retired	Wiegmann enclosure center panel support, white polyester powder finish, for 90 inch high enclosures. Allows two single-wide sub-panels (including swing-out panels and rack mount frames) to be mounted in a double-door enclosure.	22



WA60FSCPS

Enclosure Accessories – Panel Mounting



Adjustable Depth Mounting Kit

Adjustable depth mounting kits allow mounting of accessories at variable depths from front to back. They fit Wiegmann Ultimate Series NEMA 412 enclosures of all depths.

Kits may be used to mount the following: swing-out panels, DIN rails, rack angles, mounting channels and grid straps.

Kits include either two or four sets of brackets, mounting clips, and hardware. One set required for each enclosure collar stud.

Finish: White Polyester Powder

Note: Dead front kit CANNOT be mounted on adjustable depth mounting kit.



HFWADM64C

Shipping Schedule					
Same day	1 - 5 days	1 - 7 days	1-10 days	1 - 15 days	1 - 20 days
Color indicates shipping lead time in business days.					

Adjustable Depth Mounting Kit	Price	Enclosure Depth	Sets of Brackets, Mounting Clips, and Hardware Included in Kit	Wt. [lb]
HFWADM64C	Retired	6 or more inches	4	2
HFWADM84C	\$85.00	8 or more inches	4	
HFWADM82C	Retired	8 or more inches	2	
HFWADM104C	Retired	10 or more inches	4	1
HFWADM102C	Retired	10 or more inches	2	
HFWADM124C	Retired	12 or more inches	4	2
HFWADM122C	\$50.00	12 or more inches	2	

Dead Front Kit

Dead front kits allow fixed sub-mounting surface for installation directly behind the door of Ultimate Series NEMA 412 enclosures.

The clearance from the dead panel face to the interior door face is 1-5/16-inch on solid doors, and 1-1/16-inch on window doors.

Each kit includes mounting brackets, grounding hardware, and a carbon steel panel with white polyester powder finish.

Dead fronts meet NEMA 1 with enclosure door open.

Note: Dead front kit CANNOT be mounted on adjustable mounting kit.

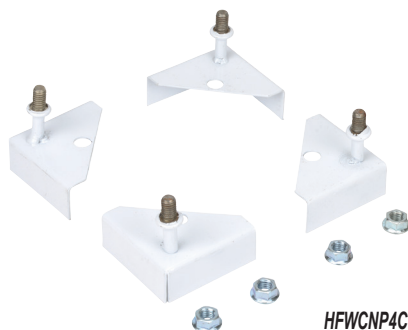


HFWDF1212C

Dead Front Kit	Price	For Enclosure Size (HxW) in [mm]	Wt. [lb]
HFWDF1212C	\$80.00	12 X 12 (304 x 304)	3
HFWDF1612C	\$90.00	16 X 12 (406 x 304)	5
HFWDF2016C	\$117.00	20 X 16 (508 x 406)	7
HFWDF2020C	\$134.00	20 X 20 (508 x 508)	9
HFWDF2420C	\$151.00	24 X 20 (609 x 508)	11
HFWDF2424C	\$171.00	24 X 24 (609 x 609)	12
HFWDF3024C	\$202.00	30 X 24 (762 x 609)	16

Panel Conversion Kit

Panel conversion kits allow installation of standard NP series subpanels within Ultimate Series NEMA 12 enclosures. Conversion brackets bolt over the top of existing studs, then install the subpanel. Kit includes four adapter plates and hardware for mounting subpanels.

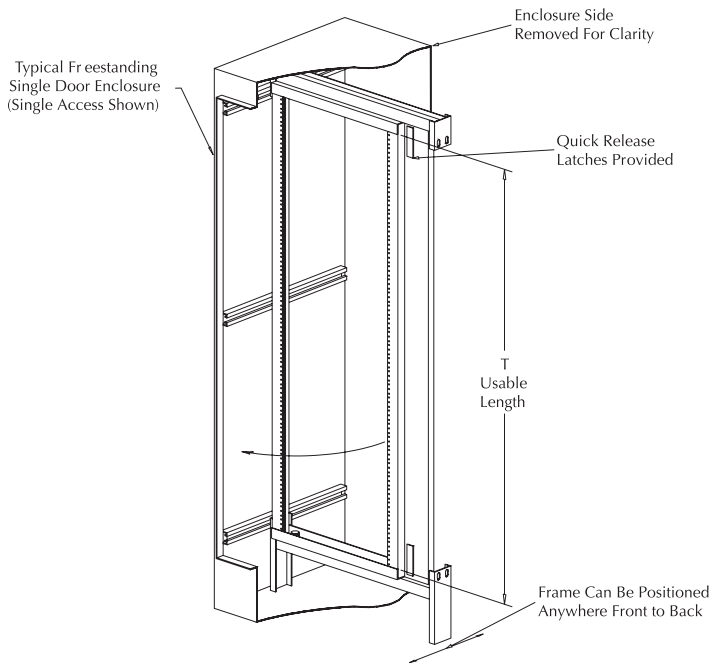


HFWCNP4C

Panel Conversion Kit	Price	For Enclosure Size	Wt. [lb]
HFWCNP4C	\$60.00	Wiegmann enclosure panel conversion kit, white polyester powder finish. Allows standard NP series sub panels to mount in N412 series enclosures up to 30 x 30 inch (HxW) nominal size. Includes (4) brackets and mounting hardware.	2

Enclosure Accessories – Rack Mounting

Swing-Out Rack Mounting Frames for Freestanding Enclosures



Fabricated from 10-gauge steel, these swing-out rack mounting frames are available for mounting 19 in [483 mm] rack-mounted equipment. Mounting holes are tapped with #10-32 threads spaced per E.I.A. standard.

Frames are painted with white polyester powder.

Note: If used in a two-door enclosure, a center panel support must be ordered.

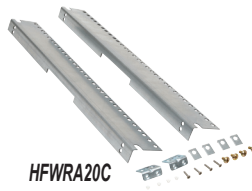
Shipping Schedule					
Same day	1 - 5 days	1 - 7 days	1-10 days	1 - 15 days	1 - 20 days
Color indicates shipping lead time in business days.					

Mounting Frames	Price	Fits Enclosure HxW	Usable Angle Length "T"	Wt. [lb]
WA7230SOF19	Retired	72 x 30 [1829 x 762]	57.88 [1470]	61
WA7236SOF19	Retired	72x36 [1829x914]	57.88 [1470]	73
WA9036SOF19	Retired	90x36 [2286x914]	75.38 [1915]	87

Note: Dimensions in inches [millimeters].

Rack Mounting Angles for Ultimate Series

Rack mounting angles allow the installation of 19 in [483 mm] rack equipment in 24-inch wide NEMA 412 enclosures. "L" shaped thru-hole angles may be fixed to the enclosure flange, or used in combination with the Adjustable Depth Mounting Kits. Thru-hole diameters are 0.281 in [7.14mm]. Brackets are fabricated from 14-gauge galvanized steel. Mounting hardware and two angles are provided.



Note: W1032N clip nuts must be purchased separately.

Rack Mounting Angles	Price	For Enclosure Height in [mm]	Wt. [lb]
HFWRA20C	Retired	20 [508]	3
HFWRA24C	Retired	24 [609]	
HFWRA30C	Retired	30 [762]	
HFWRA36C	Retired	36 [914]	4
HFWRA48C	Retired	48 [1219]	7

Console Rack Angles

Angle brackets for mounting 19 in [483 mm] rack equipment in the WC14B console.



Rack Mounting Angle For Wall-Mounts

Designed for mounting 19 in [483 mm] rack mounted equipment in 24-inch wide NEMA 12, NEMA 4 and NEMA 412 wall-mount enclosures. Small holes are tapped # 10-32. Sealing washers are also provided to maintain original NEMA rating after installation.

Console Rack Angle	Price	Description	Wt. [lb]
WC14R	Retired	Wiegmann enclosure rack angle, white polyester powder finish, for WC14B enclosure. For use on WC series consoles but provides standard rack hole spacing for only WC14B. Includes mounting hardware. Package of 2.	11

Rack Mounting Angle	Price	For Enclosure Height in [mm]	Description	Wt. [lb]
WARAK24	Retired	24 [609]	Enclosure rack mounting angle, white polyester powder finish. Includes mounting hardware. Package of 2.	8
WARAK30	Retired	30 [762]		10
WARAK36	Retired	36 [914]		12

Enclosure Accessories – Rack Mounting



Rack Mounting For Freestanding Enclosures

Type RP Angles

Full or half-length rack angles for installing rack-mounted equipment in freestanding NEMA 12 enclosures

- 10-gauge steel
- If used in two-door enclosures a center panel support must be ordered
- White polyester powder
- Package of 2 angles includes mounting hardware

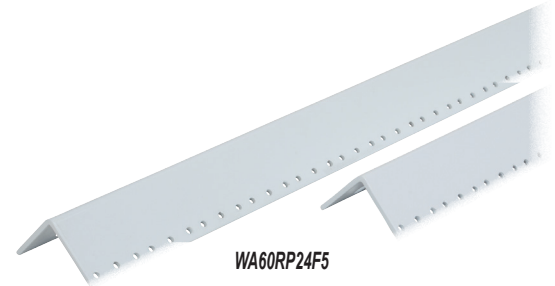
Shipping Schedule

Same day 1 - 5 days 1 - 7 days 1-10 days 1 - 15 days 1 - 20 days

Color indicates shipping lead time in business days.

Rack Mounting Angles	Price	Fits Enclosure Size (HxW) in [mm]	Length	Wt. [lb]
WA60RP24F5	Retired	60x24 [1524X610]	49.00 [1244]	15
WA60RP24F6	Retired		26.25 [667]	8
WA72RP24F5	Retired	90x24 [2286x610]	61.25 [1556]	19
WA72RP24F6	Retired		31.50 [800]	10
WA90RP24F5	Retired	90x24 [228.60x60.96cm]	78.75 [2000]	24
WA90RP24F6	Retired		40.25 [1022]	14

Note: Dimensions in inches [millimeters].

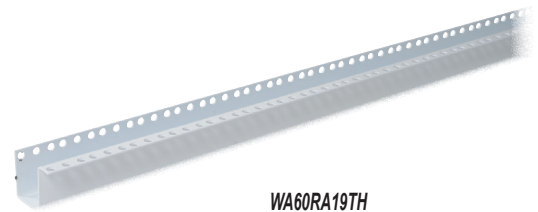


WA60RP24F5

Type RA Channel

U-shaped channel for installing 19 in [483 mm] rack-mounted equipment in all freestanding NEMA 12 and NEMA 4 enclosures:

- Through holes (7/32-inch diameter) are provided and require a W1032N clip nut (must be ordered separately)
- Mounted on unistrut within the enclosure
- Adjustable
- If used in two-door enclosures, a center panel support must be ordered
- White polyester powder finish



WA60RA19TH

Rack Mounting Channel	Price	Fits Enclosure Size (HxW) in [mm]	Length in [mm]	Wt. [lb]
WA60RA19TH	Retired	60 x 24 [1524 x 610]	49.00 [1245]	14
WA72RA19TH	Retired	72 x 24 [1829 x 610]	61.25 [1556]	18
WA90RA19TH	Retired	90 x 24 [2286 x 610]	78.78 [2001]	23

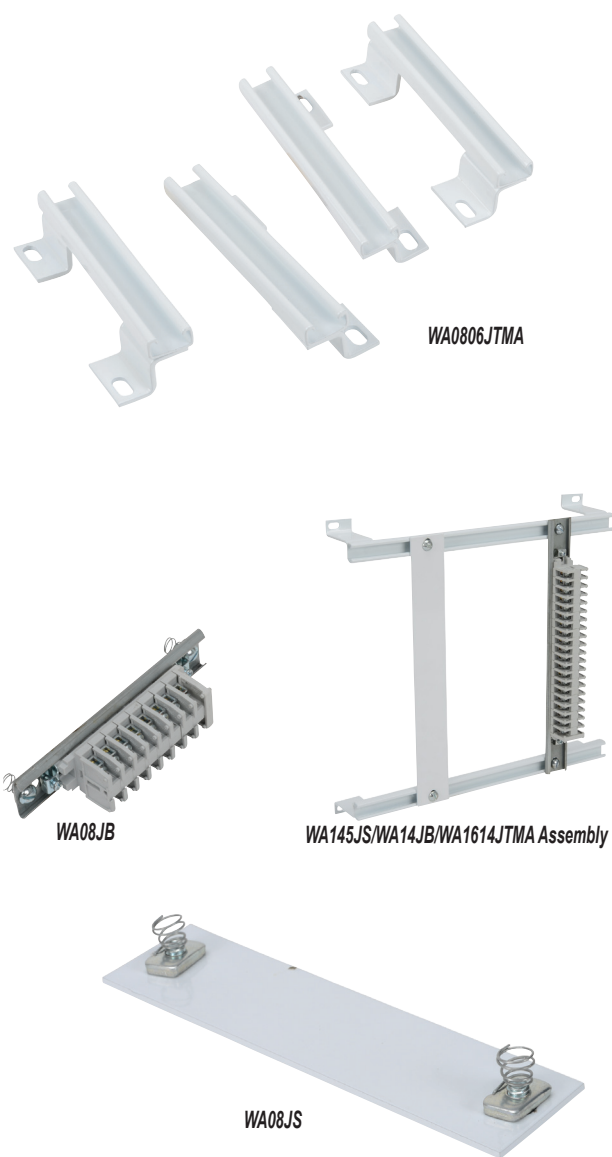
Note: Dimensions in inches [millimeters].

Enclosure Accessories – Terminal Block Mounting

Terminal Block Strips, Brackets, and Straps for all Small JIC NEMA 12 and NEMA 4 Enclosures



Terminal block strips, brackets, and straps provide a strong, versatile means for mounting terminal blocks in Wiegmann JIC enclosures. Easily-installed brackets accommodate the desired number of terminal straps or terminal block strips. Bracket sets consist of two white enamel brackets, which mount on collar studs. Terminal block strips consist of a Buchanan Type MD terminal block for AWG 22 through AWG 10 wire, mounted on a single terminal strap. Terminal block strips attach where desired by spring locking nuts. Order brackets, block strips, and straps by part number shown below.



How To Order

Each enclosure requires one bracket set plus the desired number of terminal straps. The bracket set and the terminal straps must be ordered separately:

- To select the correct terminal strap, determine whether the terminal straps will be mounted parallel to the height or width dimension
- Specify the number of straps desired, checking usable space for enclosure ordered
- To select the correct bracket set, determine whether the bracket will be mounted parallel to height or width dimension of enclosure
 - Refer to chart and specify correct bracket by catalog number

Shipping Schedule					
Same day	1 - 5 days	1 - 7 days	1-10 days	1 - 15 days	1 - 20 days
Color indicates shipping lead time in business days.					

Terminal Brackets	Price	Enclosure Dimension Parallel to Brackets	Bracket Height (From Back of Enclosure)	Wt.[lb]
WA0806JTMA	Retired	6.00 [152]	1.56 [40]	1
WA0808JTMA	Retired	8.00 [203]	1.56 [40]	
WA1010JTMA	Retired	10.00 [254]	2.81 [71]	
WA1212JTMA	Retired	12.00 [305]	2.81 [71]	
WA1614JTMA	Retired	14.00 [356]	2.81 [71]	
Note: Dimensions in inches [millimeters].				

Terminal Block Strip	Price	Dimension Parallel to Strip in [mm]	Terminal Blocks per Strip	Terminal Block Height	Wt.[lb]
WA08JB	Retired	8.00 [203]	8	2.75 [70]	0.5
WA10JB	Retired	10.00 [254]	12	2.75 [70]	
WA12JB	Retired	12.00 [305]	16	4.00 [102]	
WA14JB	Retired	14.00 [356]	20	4.00 [102]	1
WA16JB	Retired	16.00 [406]	24	4.00 [102]	
Note: Dimensions in inches [millimeters].					

Terminal Straps	Price	Enclosure Dimension Parallel to Strap in [mm]	Usable Length	Wt.[lb]
WA08JS	Retired	8.00 [203]	4.63 [118]	0.5
WA10JS	Retired	10.00 [254]	6.53 [166]	
WA12JS	Retired	12.00 [305]	8.63 [219]	
WA14JS	Retired	14.00 [356]	10.53 [267]	
WA16JS	Retired	16.00 [406]	12.53 [318]	
Note: Dimensions in inches [millimeters].				

NOTE: Be sure to order one bracket set plus the desired number of terminal straps for each enclosure.

Enclosure Accessories – Terminal Block Mounting

Terminal Brackets and Straps for NEMA 1, 4, 12, and 13 Enclosures



Brackets and straps provide strong, versatile and easily installed terminal block mounting supports for use in large NEMA 1, 4, 12, and 13 and large JIC enclosures. Each bracket assembly consists of two or three brackets which mount on enclosure collar studs. Mounting straps can be positioned anywhere along the brackets and are held in place by spring locking nuts, making wiring easy and providing for the addition of more straps at a later date. Brackets may be installed parallel to height or width dimension. Standard finish is white polyester powder.

How To Order

Each enclosure requires one bracket set plus the desired number of terminal straps. The bracket set and the terminal straps must be ordered separately:

- To select the correct terminal strap, determine whether the terminal straps will be mounted parallel to the height or width dimension
- Specify the number of straps desired, checking usable space for enclosure ordered
- To select the correct bracket set, determine whether the bracket will be mounted parallel to height or width dimension of enclosure
 - Refer to chart and specify correct bracket by catalog number

Shipping Schedule					
Same day	1 - 5 days	1 - 7 days	1-10 days	1 - 15 days	1 - 20 days
Color indicates shipping lead time in business days.					

Terminal Brackets	Price	Number of Brackets	Bracket Length	Enclosure Dimension Parallel to Bracket	Wt. [lb]
WA12NTMA2	Retired	2	9.00 [229]	12 [305]	1
WA16NTMA2	Retired		13.00 [330]	16 [406]	2
WA24NTMA2	Retired		21.00 [533]	24 [610]	4
Note: Dimensions in inches [millimeters].					



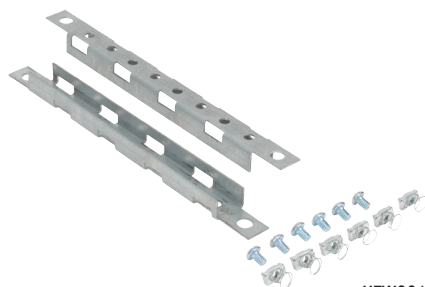
Terminal Strap	Price	Strap Length [mm]	Usable Length [mm]	Enclosure Dimension Parallel to Strap in [mm]	Wt. [lb]
WA16T	Retired	13.00 [330]	11.75 [298]	16 [406]	1
WA20T	Retired	17.00 [432]	15.38 [391]	20 [508]	
WA24T	Retired	21.00 [533]	19.75 [502]	24 [610]	
WA30T	Retired	27.00 [686]	25.75 [654]	30 [762]	
WA36T	Retired	33.00 [838]	31.75 [806]	36 [914]	
Note: Dimensions in inches [millimeters].					



Enclosure Accessories – Channel, Grid Straps, and DIN Rail Mounting



HFWMC12C



HFWGS12C

Mounting Channel

Mounting Channels can be used when installing DIN rails, grid straps, and rack mounting angles in Ultimate Series NEMA 4/12 enclosures. Channels can be mounted both vertically or horizontally to collar studs, or they may be mounted to Adjustable Depth Mounting Kits. Each kit includes two channels with white polyester powder finish.

Grid Straps

Grid straps are used when a flexible means of installing components in Ultimate Series NEMA 4/12 enclosures is required. Straps are available in single or three hole widths. Straps can be mounted both vertically or horizontally to collar studs, or they may be mounted to Adjustable Depth Mounting Kits. Each kit contains two straps and mounting hardware. Fasteners for attaching equipment to the grid straps [HFWGSHC] must be ordered separately.

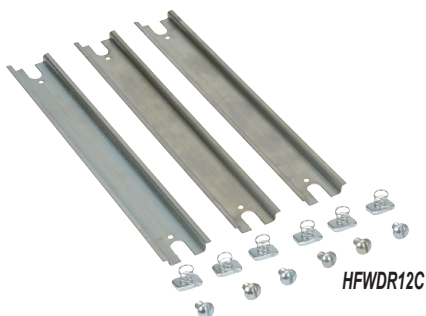
Shipping Schedule					
Same day	1 - 5 days	1 - 7 days	1-10 days	1 - 15 days	1 - 20 days
Color indicates shipping lead time in business days.					

Mounting Channels	Price	For Enclosure Parallel Dimension in (mm)	Wt. [lb]
HFWMC12C	Retired	12 [304]	1
HFWMC16C	Retired	16 [406]	
HFWMC20C	Retired	20 [508]	
HFWMC24C	Retired	24 [609]	
HFWMC30C	Retired	30 [762]	
HFWMC42C	Retired	42 [1066]	3
HFWMC48C	Retired	48 [1219]	
HFWMC60C	Retired	60 [1524]	
Note: Dimensions in inches [millimeters].			

Grid Straps	Price	For Enclosure Parallel Dimension in (mm)	Wt. [lb]
HFWGS12C	Retired	12 [304]	1
HFWGS16C	Retired	16 [406]	
HFWGS24C	Retired	24 [609]	2
HFWGS30C	Retired	30 [762]	3
HFWGS36C	Retired	36 [914]	5
HFWGS42C	Retired	42 [1066]	6
HFWGS60C	Retired	60 [1524]	9
Note: Dimensions in inches [millimeters].			

DIN Rail Kit

DIN rails supply mounting surfaces for DIN mount snap-on devices. Rails can be mounted both vertically or horizontally to collar studs in Ultimate Series NEMA 41/2 enclosures, or they may be mounted to Adjustable Depth Mounting Kits. Kit includes three rails with painted finish and mounting hardware.



HFWDR12C

DIN Rail Kit	Price	For Enclosure Parallel Dimension in (mm)	Wt. [lb]
HFWDR12C	Retired	12 [304]	1
HFWDR16C	Retired	16 [406]	
HFWDR20C	Retired	20 [508]	2
HFWDR24C	Retired	24 [609]	0.1
Note: Dimensions in inches [millimeters].			

Enclosure Accessories – Fasteners and Miscellaneous

Shipping Schedule					
Same day	1 - 5 days	1 - 7 days	1-10 days	1 - 15 days	1 - 20 days

Color indicates shipping lead time in business days.



Print pockets

Print Pockets	Price	Description	Wt. [lb]
WAPPL0606	\$20.00	6.0in [152mm]x6.0in [152mm] plastic print pocket can be placed anywhere within enclosure using 2-way adhesive tape flanges. Color: white	0.5
WAPPL0810	\$32.00	8"x10" plastic print pocket can be placed anywhere within enclosure using 2-way adhesive tape flanges. Color: white	



WAPPL0810

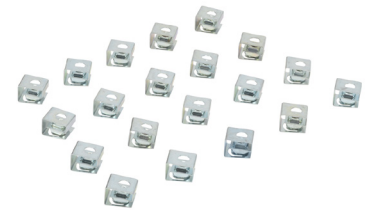
Clamp Nuts

Clamp nuts for enclosure unistrut are available for special purposes and spares, but are not required for standard enclosure accessories.



Clamp Nuts	Price	Description	Wt. [lb]
WAPS1420CN	Retired	1/4-20 clamp nut with 1/4-20 x 1/2in-long pan head screw. Package of 2.	1
WAPS3816CN	Retired	3/8-16 clamp nut with 3/8-16 x 1in-long hex bolt. Package of 1.	

Spring Nuts



Spring Nut Package	Price	Description	Wt. [lb]
HFWGSHC	Retired	Grid fasteners for mounting equipment to grid straps. Package of 20 spring nuts with 1/4-20 pan head screws.	0.1
W1032N	Retired	Plated #10-32 spring nuts will fit all rack mounting angles with 7/32 diameter holes. Package of 20.	

Touch-up paint



WAGSE

Touch-Up Paint	Price	Description	Wt. [lb]
WAGSE	\$25.00	ANSI-61 gray satin enamel in 12 oz. spray can. Use on existing enclosure and subpanel finishes.	1.5

Enclosure Accessories – Strip Gasket



Shipping Schedule

Same day	1 - 5 days	1 - 7 days	1 - 15 days	1 - 20 days
----------	------------	------------	-------------	-------------

Color indicates shipping lead time in business days.

Strip Gasket



Strip Gasket	Price	Description	Wt. [oz]
<u>WGAS51634</u>	Retired	Wiegmann strip gasket, replacement, self-adhesive, microcell urethane foam, 5/16 inch thick x 0.75in [19 mm]ch wide x 10 ft long roll. For gasket replacement on Wiegmann wall-mount NEMA 12, 4 and 4X enclosures.	7
<u>WGAS3834</u>	Retired	Wiegmann strip gasket, replacement, self-adhesive, closed-cell sponge rubber, 3/8 inch thick x 0.75in [19 mm]ch wide x 10 ft long roll. For gasket replacement on Wiegmann floor-mount and freestanding NEMA 12, 4 and 4X enclosures.	7