

OKK Series Base and Roof Sets



Application

Each set provides the base and roof for one OKK Series enclosure.

Requires the following compatible components for a completed OKK Series enclosure:

- Vertical frame rail set
- Exterior side panels
- Door
- Exterior rear panel or additional door
- Subpanel

Easily find compatible OKK Series parts for your enclosure using the link button or QR code below:

Configuration Tool



Features

- Bases have removable flanges for easy cable and wire entry.
- Roof bolts can be replaced with eyebolts ([GLF812-K4](#) for enclosure lifting).
- Base is compatible with [OKK Series Plinth Kits](#) for cable ingress and management.
- Vertical rails are connected with included hardware.

**Assembly requires a T30 bit.*

Material and Finish

- Sendzimir galvanized frame rails
- Zamak corner joints
- Exterior portions are RAL7035 light gray textured powder coat finish

Listings

- Fully-assembled OKK Series Enclosures are rated as follows:
 - UL 508a Type 12 [UL File E503249]
 - CSA Type 12 [CSA File 115232]
- Complies with
 - NEMA Type 12
 - IEC EN60529 IP55



Base and Roof Sets			
Part Number	Price	Enclosure Size WxD	Drawing Link
OKKTB6040	\$305.00	600 x 400 [23.62 x 15.75]	PDF
OKKTB6080	\$399.00	600 x 600 [23.62 x 23.62]	PDF
OKKTB6060	\$515.00	600 x 800 [23.62 x 31.50]	PDF
OKKTB8040	\$356.00	800 x 400 [31.50 x 15.75]	PDF
OKKTB8060	\$402.00	800 x 600 [31.50 x 23.62]	PDF
OKKTB8080	\$525.00	800 x 800 [31.50 x 31.50]	PDF
OKKTB1040	\$380.00	1000 x 400 [39.37 x 15.75]	PDF
OKKTB1060	\$437.00	1000 x 600 [39.37 x 23.62]	PDF
OKKTB1080	\$574.00	1000 x 800 [39.37 x 31.50]	PDF
OKKTB1240	\$539.00	1200 x 400 [47.24 x 15.75]	PDF
OKKTB1260	\$597.00	1200 x 600 [47.24 x 23.62]	PDF
OKKTB1280	\$768.00	1200 x 800 [47.24 x 31.50]	PDF

Note: Dimensions in millimeters [inches].



OKK Series Enclosure Rails

Application

Each set provides the vertical structure for one OKK Series enclosure.

Requires the following compatible components for a completed OKK Series enclosure:

- Base and roof set
- Exterior side panels
- Door
- Exterior rear panel or additional door
- Subpanel

Easily find compatible OKK Series parts for your enclosure using the link button or QR code below:

Configuration Tool



Features

- Package includes four rails.
- Pre-punched holes on interior surfaces accept M6 cage nuts and M5 self-threading screws.

Material

- Sendzimir galvanized steel

Listings

- Fully-assembled OKK Series Enclosure is rated:
 - UL 508a Type 12 [UL File E503249]
 - CSA Type 12 [CSA File 115232]
- Complies with
 - NEMA Type 12
 - IEC EN60529 IP55



OKK Series Enclosure Rails				
Part Number	Price	Qty	Enclosure Height	Drawing Link
MTK180-4	\$236.00	4	1800 [70.87]	PDF
MTK200-4	\$258.00	4	2000 [78.74]	PDF
Note: Dimensions in millimeters [inches].				

OKK Series Side Exterior Panels



Application

Each exterior panel provides two side exterior surfaces for an OKK Series enclosure.

Requires the following compatible components for a completed OKK Series enclosure:

- Base and roof set
- Vertical frame rail set
- Door
- Exterior rear panel or additional door
- Subpanel

Multiple enclosure extensions bayed together can be sealed with a single set of side panels.

Easily find compatible OKK Series parts for your enclosure using the link button or QR code below:

Configuration Tool



Material

- 1.5 mm carbon steel

Finish

- RAL 7035 light gray
- Textured powder coat finish

Features

- Package of two side panels
- Poured-in-place polyurethane gasket
- Includes mounting clips, screws, and gaskets (CLK013-KIT2F)

Listings

- Fully-assembled OKK Series Enclosures are rated as follows:
 - UL 508a Type 12 [UL File E503249]
 - CSA Type 12 [CSA File 115232]
- Complies with the following:
 - NEMA Type 12
 - IEC EN60529 IP55



Side Exterior Panels			
Part Number	Price	Fits Enclosure Size HxD	Drawing Link
DLK184	\$86.00	1800 x 400 [70.87 x 15.75]	PDF
DLK186	\$124.00	1800 x 600 [70.87 x 23.62]	PDF
DLK188	\$166.00	1800 x 800 [70.87 x 31.50]	PDF
DLK204	\$94.00	2000 x 400 [78.74 x 15.75]	PDF
DLK206	\$135.00	2000 x 600 [78.74 x 23.62]	PDF
DLK208	\$175.00	2000 x 800 [78.74 x 31.50]	PDF
Note: Dimensions in millimeters [inches].			

OKK Series Rear Exterior Panels



Application

Each rear exterior panel provides the rear surface for one OKK Series enclosure.

Requires the following compatible components for a completed OKK Series enclosure:

- Base and roof set
- Vertical frame rail set
- Exterior side panels
- Door
- Subpanel

An additional door may be used in lieu of a rear exterior panel to create a dual access enclosure.

Easily find compatible OKK Series parts for your enclosure using the link button or QR code below:

Configuration Tool



Material

- 2.0 mm carbon steel

Finish

- RAL 7035 light gray
- Textured powder coat finish

Features

- Poured-in-place polyurethane gasket
- Includes mounting clips, screws, and gaskets (CLK013-KIT2F)

Listings

- Fully-assembled OKK Series Enclosures are rated as follows:
 - UL 508a Type 12 [UL File E503249]
 - CSA Type 12 [CSA File 115232]
- Complies with the following:
 - NEMA Type 12
 - EC EN60529 IP55



Rear Exterior Panels			
Part Number	Price	Fits Enclosure Size HxW	Drawing Link
RPE186	\$94.00	1800 x 600 [70.87 x 23.62]	PDF
RPE188	\$117.00	1800 x 800 [70.87 x 31.50]	PDF
RPE18A	\$140.00	1800 x 1000 [70.87 x 39.37]	PDF
RPE18C	\$161.00	1800 x 1200 [70.87 x 47.24]	PDF
RPE206	\$114.00	2000 x 600 [78.74 x 23.62]	PDF
RPE208	\$131.00	2000 x 800 [78.74 x 31.50]	PDF
RPE20A	\$147.00	2000 x 1000 [78.74 x 39.37]	PDF
RPE20C	\$172.00	2000 x 1200 [78.74 x 47.24]	PDF

Note: Dimensions in millimeters [inches].

OKK Series Doors



Application

Each door provides interior access to an OKK Series enclosure.

Requires the following compatible components for a completed OKK Series enclosure:

- Base and roof set
- Vertical frame rail set
- Exterior side panels
- Exterior rear panel or additional door
- Subpanel

Material

- 2.0 mm carbon steel

Finish

- RAL 7035 light gray
- Textured powder coat finish

Features

- Fully reversible (handle can be oriented on the left or right side)
- 120° opening
- Four hinges
- 3.0mm double-bar 4-point latch with double-bit key
- Poured-in-place two-component polyurethane gasket, foamed on a perimeter external to the latch points
- Doors include a Sendzimir galvanized inner stiffening frame with Zamak zinc alloy corner pieces.

Listings

- Fully-assembled OKK Series Enclosures are rated as follows:
 - UL 508a Type 12 [UL File E503249]
 - CSA Type 12 [CSA File 115232]
- Complies with the following:
 - NEMA Type 12
 - IEC EN60529 IP55



Easily find compatible OKK Series parts for your enclosure using the link button or QR code below:

Configuration Tool



Single-Door			
Part Number	Price	Size HxW	Drawing Link
DBE186	\$219.00	1800 x 600 [70.87 x 23.62]	PDF
DBE188	\$263.00	1800 x 800 [70.87 x 31.50]	PDF
DBE18A	\$282.00	1800 x 1000 [70.87 x 39.37]	PDF
DBE206	\$235.00	2000 x 600 [78.74 x 23.62]	PDF
DBE208	\$279.00	2000 x 800 [78.74 x 31.50]	PDF
DBE20A	\$319.00	2000 x 1000 [78.74 x 39.37]	PDF
Note: Dimensions in millimeters [inches].			

Double-Door			
Part Number	Price	Size HxW	Drawing Link
DBE18C	\$360.00	1800 x 1200 [70.87 x 47.24]	PDF
DBE20C	\$386.00	2000 x 1200 [78.74 x 47.24]	PDF
Note: Dimensions in millimeters [inches]. Double-door sets consist of a master door and slave door which are packaged separately.			

OKK Series Doors with Window



Application

Each door provides interior access to an OKK Series enclosure.

Requires the following compatible components for a completed OKK Series enclosure:

- Base and roof set
- Vertical frame rail set
- Exterior side panels
- Exterior rear panel or additional door
- Subpanel

Material

- 2.0 mm carbon steel
- 4.0 mm acrylic window

Finish

- RAL 7035 light gray
- Textured powder coat finish

Features

- Fully reversible
- 120° opening
- Four hinges
- 3.0mm double-bar 4-point latch with double-bit key
- Poured-in-place two-component polyurethane gasket, foamed on a perimeter external to the latch points
- Doors include a Sendzimir galvanized inner stiffening frame with Zamak zinc alloy corner pieces.

Listings

- Fully-assembled OKK Series Enclosures are rated as follows:
 - UL 508a Type 12 [UL File E503249]
 - CSA Type 12 [CSA File 115232]
- Complies with the following:
 - NEMA Type 12
 - IEC EN60529 IP55



Easily find compatible OKK Series parts for your enclosure using the link button or QR code below:

Configuration Tool



Doors with Window			
Part Number	Price	Size HxWxD	Drawing Link
DTE188	\$494.00	1800 x 800 [70.87 x 31.50]	PDF
DTE18A	\$580.00	1800 x 1000 [70.87 x 39.37]	PDF
DTE208	\$559.00	2000 x 800 [78.74 x 31.50]	PDF
DTE20A	\$653.00	2000 x 1000 [78.74 x 39.37]	PDF
Note: Dimensions in millimeters [inches].			

OKK Series Subpanels



Application

Provides the primary subpanel for an OKK Series enclosure.

Requires the following compatible components for a completed OKK Series enclosure:

- Base and roof set
- Vertical frame rail set
- Exterior side panels
- Door
- Exterior rear panel or additional door

Subpanel can be mounted at variable depths or flush mounted. Multiple subpanels can be used in a Dual access enclosure.

Subpanels may also be recess mounted on one or both sides for use as side-mounted panels or to form a barrier between two adjacent bays. For side-mount applications, match subpanel nominal width to enclosure depth.

APK110 (sold separately) required for all recess mounting applications

Material

- 2.5 mm Sendzimir galvanized steel

Features

- Includes installation hardware ([PPK100](#)).

Easily find compatible OKK Series parts for your enclosure using the link button or QR code below:

Configuration Tool



Subpanels			
Part Number	Price	Fits Enclosure Size HxW	Drawing Link
PNA186	\$105.00	1800 x 600 [70.87 x 23.62]	PDF
PNA188	\$121.00	1800 x 800 [70.87 x 31.50]	PDF
PNA18A	\$138.00	1800 x 1000 [70.87 x 39.37]	PDF
PNA18C	\$159.00	1800 x 1200 [70.87 x 47.24]	PDF
PNA206	\$119.00	2000 x 600 [78.74 x 23.62]	PDF
PNA208	\$146.00	2000 x 800 [78.74 x 31.50]	PDF
PNA20A	\$169.00	2000 x 1000 [78.74 x 39.37]	PDF
PNA20C	\$196.00	2000 x 1200 [78.74 x 47.24]	PDF
Note: Dimensions in millimeters [inches].			

OKK Series Swing Panels



Application

Provides an interior mounting surface just behind the exterior door. Panel can swing open to allow access to the interior of the enclosure.

Material

- 2.0 mm carbon steel

Finish

- RAL 7035 light gray
- Textured powder coat finish

Features

- Includes hinges, screws, and bolts
- Zinc alloy corner pieces.

Listings

- IP44



Easily find compatible OKK Series parts for your enclosure using the link button or QR code below:

[Configuration Tool](#)



Swing Panels			
Part Number	Price	Fits Enclosure Size HxW	Drawing Link
DBI188	\$284.00	1800 x 800 [70.87 x 31.50]	PDF
DBI18A	\$334.00	1800 x 1000 [70.87 x 39.37]	PDF
DBI208	\$326.00	2000 x 800 [78.74 x 31.50]	PDF
DBI20A	\$378.00	2000 x 1000 [78.74 x 39.37]	PDF
Note: Dimensions in millimeters [inches]. Swing panels kits consist of a panel and a mounting frame; each packaged separately.			

OKK Series Plinths

ZAK081ZAK082

Description

Components for custom-designed plinths for OKK Series enclosures.

Material

- 2.0 mm carbon steel

Finish

- RAL 7024 graphite gray
- Textured powder coat finish

Features

- Both front/rear plates and side flanges are sold in pairs.
- Mix and match front/rear plates and side flanges to match enclosure WxD dimensions.
- Use two sets of 100mm [3.94 in] height side flanges with 200mm [7.87 in] height front/rear plate sets.
- Plinth assemblies can be stacked to form greater plinth heights.



Easily find compatible OKK Series parts for your enclosure using the link button or QR code below:

Configuration Tool



View assembly guide with the link button or QR code below:

Assembly Guide



Plinth Front and Rear Plate Sets

Part Number	Price	Size HxW	Drawing Link
ZAK061	\$68.00	100 x 600 [3.94 x 23.62]	PDF
ZAK062	\$135.00	200 x 600 [7.87 x 23.62]	PDF
ZAK081	\$87.00	100 x 800 [3.94 x 31.50]	PDF
ZAK082	\$174.00	200 x 800 [7.87 x 31.50]	PDF
ZAK0A1	\$99.00	100 x 1000 [3.94 x 39.37]	PDF
ZAK0A2	\$199.00	200 x 1000 [7.87 x 39.37]	PDF
ZAK0C1	\$101.00	100 x 1200 [3.94 x 47.24]	PDF
ZAK0C2	\$203.00	200 x 1200 [7.87 x 47.24]	PDF

Note: Dimensions in millimeters [inches].

Plinth Side Flanges

Part Number	Price	Size HxD	Drawing Link
FLK14	\$5.25	100 x 400 [3.94 x 15.75]	PDF
FLK16	\$7.00	100 x 600 [3.94 x 23.62]	PDF
FLK18	\$8.00	100 x 800 [3.94 x 31.50]	PDF

Note: Dimensions in millimeters [inches].

FLK16



OKK Series Accessories

Galvanized Steel Mounting Channels

Application

Mounting channels can be used to create additional mounting positions at any location inside the enclosure. They can be connected to the inner frame of the enclosure or span between other mounting channels in either a vertical or horizontal orientation.

Features

- Available with a flanged end or a closed end.
 - Either may work depending on the mounting location and orientation.
- Includes pre-punched holes to accept M6 cage nuts and M5 self-threading screws.

Easily find compatible OKK Series parts for your enclosure using the link button or QR code below:

Configuration Tool



Flanged Mounting Channels		
Part Number	Price	For Use with Width/Depth Enclosures
<u>STK445</u>	\$15.25	400.00 x 0.00 [10160]
<u>STK645</u>	\$18.25	600.00 x 0.00 [15240]
<u>STK845</u>	\$19.75	800.00 x 0.00 [20320]
<u>STKA45</u>	\$25.50	1000.00 x 0.00 [25400]
Note: Dimensions in millimeters [inches].		



Closed-End Mounting Channels		
Part Number	Price	For Use with Width/Depth Enclosures
<u>SCK407</u>	\$15.25	400.00 x 0.00 [10160]
<u>SCK607</u>	\$18.25	600.00 x 0.00 [15240]
<u>SCK807</u>	\$19.75	800.00 x 0.00 [20320]
<u>SCKA07</u>	\$25.50	1000.00 x 0.00 [25400]
<u>SCKC07</u>	\$30.50	1200.00 x 0.00 [30480]
Note: Dimensions in millimeters [inches].		





OKK Series Accessories

Drip Shields

Applications

Designed to offer protection from rain in outdoor applications.

Material

- Carbon steel

Finish

- RAL 7035 light gray
- Textured powder coat finish

Features

- Gasket and mounting hardware included

Easily find compatible OKK Series parts for your enclosure using the link button or QR code below:

Configuration Tool



Drip Shields			
Part Number	Price	Length	Drawing Link
PFR060	\$89.00	600 [23.62]	PDF
PFR080	\$93.00	800 [31.50]	PDF
PFR100	\$97.00	1000 [39.37]	PDF
PFR120	\$101.00	1200 [47.24]	PDF
Note: Dimensions in millimeters [inches].			



PFR060



OKK Series Accessories

Folding Desk

Features

- Mounting hardware included
- Installs inside or outside of enclosure.

Folding Desk			
Part Number	Price	Size HxW	Drawing Link
CSTK70	\$434.00	539 x 352 [21.22 x 13.86]	PDF
Note: Dimensions in millimeters [inches].			

Easily find compatible OKK Series parts for your enclosure using the link button or QR code below:

Configuration Tool



OKK Series Accessories



Baying Hardware Kit

Application

Baying kit is used to connect two or more enclosure bays together to form a single multi-door enclosure. Fits all sizes of OKK Series enclosures.

Easily find compatible OKK Series parts for your enclosure using the link button or QR code below:

Configuration Tool



Baying Hardware Kit		
Part Number	Price	Includes
UTK700	\$33.50	Brackets, gaskets, and fasteners



Filler Plates

Application

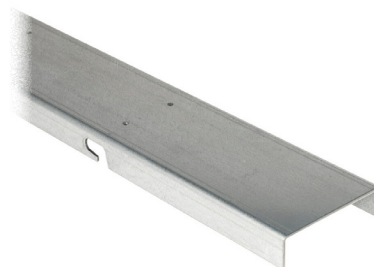
Used to fill the gap between the subpanels or roof plates of two joined enclosure bays. Not required for all applications.

Features

Mounting hardware included.

Subpanel Filler Plates				
Part Number	Price	Fits Enclosure Height	Description	Drawing Link
FUP188	\$87.00	1800 [70.87]	Quadritalia OKK Series subpanel filler plate, galvanized steel.	PDF
FUP208	\$96.00	2000 [78.74]		PDF

Note: Dimensions in millimeters [inches].



Roof Filler Plates				
Part Number	Price	Fits Enclosures Depth	Description	Drawing Link
TTP040	\$10.75	400 [15.75]	Quadritalia OKK Series roof panel filler plate, carbon steel, RAL 7035 light gray, textured powder coat finish.	PDF
TTP060	\$11.25	600 [23.62]		PDF
TTP080	\$13.50	800 [31.50]		PDF

Note: Dimensions in millimeters [inches].





OKK Series Accessories

Subpanel Mounting Hardware Kits

Application

PPK100 is included with each subpanel and is used to mount the subpanel within the enclosure.

Easily find compatible OKK Series parts for your enclosure using the link button or QR code below:

Configuration Tool



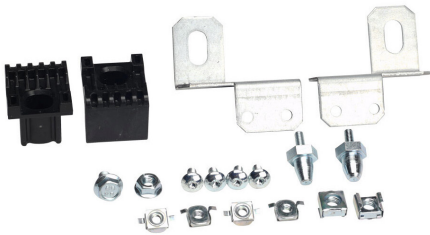
Subpanel Mounting Hardware Kits		
Part Number	Price	Includes
<u>PPK100</u>	\$42.50	Brackets, sliders, conic pins, and fasteners included.



Application

APK110 allows the subpanel to be recess mounted flush within the frame rails of the enclosure for maximizing interior space, for side-mounting subpanels, or to form a barrier between adjacent bays.

Subpanel Mounting Hardware Kits		
Part Number	Price	Includes
<u>APK110</u>	\$16.75	Brackets, sliders, conic pins, and fasteners included.



OKK Series Accessories



Easily find compatible OKK Series parts for your enclosure using the link button or QR code below:

Configuration Tool



Cage Nuts			
Part Number	Price	Description	Qty
<u>DGM800</u>	\$64.00	M8 cage nut	100
<u>DGM600</u>	\$33.50	M6 zinc plated finish cage nut	100
<u>DGM901</u>	\$39.50	M6 outdoor cage nut	100



Screws			
Part Number	Price	Description	Qty
<u>VTR616</u>	\$29.00	M6 x 16mm, hex head flanged screw	100
<u>VTC122</u>	\$80.00	screw, M12 x 20mm, 8mm Allen	100
<u>VBC614</u>	\$35.00	M6 x 14mm T30 Torx head screw	100
<u>VTS616</u>	\$35.00	M6 x 16mm T30 Torx pan head screw	100
<u>VBC616</u>	\$34.00	M6 x 16mm T30 Torx head screw	100



OKK Series Accessories



Easily find compatible OKK Series parts for your enclosure using the link button or QR code below:

[Configuration Tool](#)

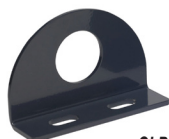


Latch Handle			
Part Number	Price	Description	Drawing Link
SRR773B	\$89.00	Quadritalia enclosure latch handle, replacement, keylocking, foldaway. (1) Yale-type key included.	PDF



[GLF812-K4](#)

Eyebolts and Lifting Lugs				
Part Number	Price	Description	Qty	Drawing Link
GLF812-K4	\$32.00	Quadritalia eyebolt, M12 x 1.5mm x 22mm, galvanized steel.	4	PDF
GLP830	\$38.00	Quadritalia bolt-on lifting lug, galvanized steel.	1	



[GLP830](#)

Application

Mounting clips are used to attach side and rear panels to the vertical rails.

* Assembly requires a T30 bit.

Mounting Clips			
Part Number	Price	Includes	Qty
CLK013-KIT2F	\$47.50	M6 hex nut and gasket included	12

