

BantamBox Series Polycarbonate Enclosures

NEMA 1, 3R, 4, 4X and 12 with Screw Cover



BB060555W



BBCC090603W

Applications

BantamBox offers an all-polycarbonate product with clear or opaque covers. These enclosures include an external flush wall design, unobstructed internal sidewalls, 304 stainless steel cover screws, and watertight seal.

Construction

- Polycarbonate for 1480 in-lb, high impact resistance per UL746C

Gray in color with gloss Finish

- Poured polyurethane seamless gasket provides watertight, dust-tight environmental seal
- Multiple depths available in most sizes
- Flush sides for a perfect fit
- Multiple molded-in bosses for a variety of equipment mounting solutions
- Lift-off cover with 4 screws
- Tightening torque: M4-9 17 lb-in, M6 17-22 lb-in

Listings

- UL/cUL File [UL File E64358]
- NEMA Ratings 1, 3R, 4, 4X, and 12
- IEC 60529 IP66 [UL File 362920]
- Flammability Rating: UL94-V2
- Non-flame propagating
- UV Exposure Rating: UL-f1
- Temperature Range: -40°F to 212°F [-40°C to 100°C]
- Certifications: cULus, REACH, CE, IEC



BantamBox Series Polycarbonate Enclosures

NEMA 1, 3R, 4, 4X and 12 with Screw Cover



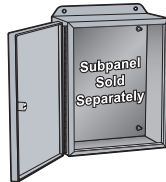
Bantam Box Series Polycarbonate Enclosures						
Opaque Cover	Price	Clear Cover	Price	Enclosure Overall Size HxWxD	Subpanel	Drawing Link
BB060555W	\$34.50	BBCC060555W	\$35.00	2.56 x 1.97 x 2.17 [65 x 50 x 55]	—	PDF
BB080805W	\$40.00	BBCC080805W	\$42.50	3.23 x 3.15 x 2.17 [82 x 80 x 55]	BPB0808P	PDF
BB080809W	\$45.50	—	—	3.23 x 3.15 x 3.35 [82 x 80 x 85]	BPB0808P	PDF
BB080810W	\$46.00	—	—	3.23 x 3.15 x 3.74 [82 x 80 x 95]	BPB0808P	PDF
BB090603W	\$38.50	BBCC090603W	\$42.00	3.86 x 2.52 x 1.46 [98 x 64 x 37]	—	PDF
BB128055W	\$44.00	BBCC128055W	\$47.00	4.72 x 3.15 x 2.17 [120 x 80 x 55]	BPB1280P	PDF
BBR128080W	\$48.00	—	—	4.72 x 3.15 x 3.15 [120 x 80 x 80]	BPB1280P	PDF
BB128010W	\$51.00	—	—	4.72 x 3.15 x 3.94 [120 x 80 x 100]	BPB1280P	PDF
BB121255W	\$51.00	—	—	4.80 x 4.72 x 2.17 [122 x 120 x 55]	BPB1212P	PDF
BB121275W	\$55.00	BBCC121275W	\$59.00	4.80 x 4.72 x 2.95 [122 x 120 x 75]	BPB1212P	PDF
BB121211W	\$64.00	BBCC121211W	\$68.00	4.80 x 4.72 x 4.13 [122 x 120 x 105]	BPB1212P	PDF
BB168055W	\$53.00	—	—	6.30 x 3.15 x 2.17 [160 x 80 x 55]	BPB1680P	PDF
BB168090W	\$58.00	BBCC168090W	\$61.00	6.30 x 3.15 x 3.54 [160 x 80 x 90]	BPB1680P	PDF
BB161255W	\$69.00	BBCC161255W	\$73.00	6.30 x 4.72 x 2.17 [160 x 120 x 55]	BPB1612P	PDF
BB161290W	\$71.00	BBCC161290W	\$75.00	6.30 x 4.72 x 3.54 [160 x 120 x 90]	BPB1612P	PDF
BB161214W	\$84.00	BBCC161214W	\$88.00	6.30 x 4.72 x 5.51 [160 x 120 x 140]	BPB1612P	PDF
BB201275W	\$74.00	BBCC201275W	\$77.00	7.87 x 4.72 x 2.95 [200 x 120 x 75]	BPB2012P	PDF
BB201290W	\$75.00	—	—	7.87 x 4.72 x 3.54 [200 x 120 x 90]	BPB2012P	PDF
BB201510W	\$86.00	BBCC201510W	\$92.00	7.87 x 5.91 x 3.94 [200 x 150 x 100]	BPB2015P	PDF
BB201513W	\$89.00	BBCC201513W	\$96.00	7.87 x 5.91 x 4.92 [200 x 150 x 125]	BPB2015P	PDF
BB251690W	\$89.00	—	—	9.84 x 6.30 x 3.54 [250 x 160 x 90]	BPB2516P	PDF
BB251611W	\$106.00	—	—	9.84 x 6.30 x 4.53 [250 x 160 x 115]	BPB2516P	PDF
BB251612W	\$108.00	BBCC251612W	\$114.00	9.84 x 6.30 x 4.72 [250 x 160 x 120]	BPB2516P	PDF
BB251615W	\$110.00	BBCC251615W	\$118.00	9.84 x 6.30 x 5.91 [250 x 160 x 150]	BPB2516P	PDF
Notes: Subpanels must be ordered separately. Dimensions in inches [millimeters].						

Heartland Series Polycarbonate Enclosures

Opaque Door with Polycarbonate Latches, Mounting Feet



AH12106



Construction

- Polycarbonate with UV inhibitors
- Robotically-applied foam-in-place polyurethane seamless gasket
- 304 stainless steel cover screws
- Panel mounting capability for fixed rear panel
- Rear wall-mounting screw size #10-32x3/8
- All threaded brass inserts accept #10-32 screws
- #10-32x5/8 cover screw size
- 20-24in-lb cover screw torque
- 1/4-20x1/2 mounting feet inserts
- 10-14 in-lb mounting feet torque
- Polycarbonate with UV inhibitors hinge and latch hardware
- Variable depth side mount capability
- Fully noN-metallic hinge, does not penetrate inside enclosure
- Thick, robust side wall construction eliminates side wall flexing
- Sliding T-Nut allows for infinite panel adjustment back to front
- Optional ABS Panel to allow unimpeded transmission of wireless signals
- Aluminum back panel and swing-out panel mounting options
- Temperature Range -40°F to +248°F [-40°C to +120°C]

Listings

- UL File No: [E319779](#)
- NEMA Ratings 1, 3R, 4, 4X, and 12 [UL508A, UL50, and UL50e]
- IEC 60529 Ratings IP66
- Flammability Rating UL94-5V
- cULus, CE, REACH
- Outdoor UV Exposure (UL 746C) (f1) Rated



Heartland Series Polycarbonate Enclosures – Opaque Door with Polycarbonate Latches, Mounting Feet

Part Number	Price	Enclosure Overall Size HxWxD	Drawing Link	Aluminum Subpanel	Price	ABS Subpanel	Price
AH664	\$83.00	7.40 x 7.41 x 5.35 [188 x 188 x 136]	PDF	BP66A	\$11.25	BP66ABS	\$14.75
AH864	\$88.00	9.40 x 7.40 x 5.32 [239 x 188 x 135]	PDF	BP86A	\$13.50	BP86ABS	\$15.50
AH884	\$92.00	9.41 x 9.41 x 5.36 [239 x 239 x 136]	PDF	BP88A	\$19.00	—	
AH1084	\$107.00	11.41 x 9.41 x 5.89 [290 x 239 x 150]	PDF	BP108A	\$20.50	BP108ABS	\$18.75
AH1086	\$111.00	11.41 x 9.41 x 7.39 [290 x 239 x 188]	PDF	BP108A	\$20.50	BP108ABS	\$18.75
AH10106	\$118.00	11.41 x 11.41 x 6.47 [290 x 290 x 164]	PDF	BP1010A	\$24.00	BP1010ABS	\$20.50
AH12106	\$148.00	13.41 x 11.41 x 7.38 [341 x 290 x 187]	PDF	BP1210A	\$25.00	BP1210ABS	\$22.00
AH14126	\$174.00	15.40 x 13.40 x 7.39 [391 x 340 x 188]	PDF	BP1412A	\$30.00	BP1412ABS	\$25.50
AH16148	\$197.00	17.41 x 15.41 x 9.40 [442 x 391 x 239]	PDF	BP1614A	\$39.00	BP1614ABS	\$29.50
AH181610	\$232.00	19.41 x 17.41 x 11.41 [493 x 442 x 290]	PDF	BP1816A	\$50.00	BP1816ABS	\$39.00
AH20168	\$340.00	21.41 x 17.41 x 9.47 [544 x 442 x 241]	PDF	BP2016A	\$84.00	BP2016ABS	\$52.00
AH242410*	\$609.00	25.41 x 25.41 x 11.41 [645 x 645 x 290]	PDF	BP2424A	\$92.00	BP2424ABS	\$62.00

*Includes integral mounting flange

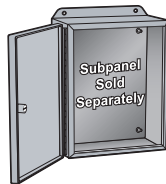
Notes: Subpanels must be ordered separately.
Dimensions in inches [millimeters].

Heartland Series Polycarbonate Enclosures

Smoked Door with Polycarbonate Latches, Mounting Feet



AH12106C



Construction

- Polycarbonate with UV inhibitors
- Neoprene rope style gasket
- Poured polyurethane seamless gasket in select sizes
- Includes polycarbonate mounting feet kit
- 304 stainless steel cover screw
- Panel mounting capability for fixed rear panel
- Rear wall-mounting screw size #10-32x3/8
- All threaded brass inserts accept #10-32 screws
- #10-32x5/8 cover screw size
- 20-24 in-lb cover screw torque
- 1/4-20x1/2 mounting feet inserts
- 10-14 in-lb mounting feet torque
- Polycarbonate with UV inhibitors hinge and latch hardware
- Variable depth side mount capability
- Fully non-metallic hinge, does not penetrate inside enclosure
- Thick, robust side wall construction eliminates side wall flexing
- Sliding T-Nut allows for infinite panel adjustment back to front
- Optional ABS Panel to allow unimpeded transmission of wireless signals
- Aluminum back panel and swing-out panel mounting options
- Temperature Range -40°F to +248°F [-40°C to +120°C]

Listings

- UL File No: [E319779](#)
- NEMA Ratings 1, 3R, 4, 4X, and 12 [UL508A, UL50, and UL50e]
- IEC 60529 Ratings IP66
- Flammability Rating UL94-5V
- cULus, CE, REACH
- Outdoor UV Exposure (UL 746C) (f1) Rated



Heartland Series Polycarbonate Enclosures – Smoked Door with Polycarbonate Latches, Mounting Feet

Part Number	Price	Enclosure Overall Size HxWxD	Drawing Link	Aluminum Subpanel	Price	ABS Subpanel	Price
AH664C	\$90.00	7.40 x 7.41 x 5.35 [188 x 188 x 136]	PDF	BP66A	\$11.25	BP66ABS	\$14.75
AH864C	\$99.00	9.40 x 7.40 x 5.32 [239 x 188 x 135]	PDF	BP86A	\$13.50	BP86ABS	\$15.50
AH884C	\$105.00	9.41 x 9.41 x 5.36 [239 x 239 x 136]	PDF	BP88A	\$19.00	—	
AH1084C	\$126.00	11.41 x 9.41 x 5.89 [290 x 239 x 150]	PDF	BP108A	\$20.50	BP108ABS	\$18.75
AH1086C	\$131.00	11.41 x 9.41 x 7.39 [290 x 239 x 188]	PDF	BP108A	\$20.50	BP108ABS	\$18.75
AH10106C	\$138.00	11.41 x 11.41 x 6.47 [290 x 290 x 164]	PDF	BP1010A	\$24.00	BP1010ABS	\$20.50
AH12106C	\$165.00	13.41 x 11.41 x 7.38 [341 x 290 x 187]	PDF	BP1210A	\$25.00	BP1210ABS	\$22.00
AH14126C	\$182.00	15.40 x 13.40 x 7.39 [391 x 340 x 188]	PDF	BP1412A	\$30.00	BP1412ABS	\$25.50
AH16148C	\$223.00	17.41 x 15.41 x 9.40 [442 x 391 x 239]	PDF	BP1614A	\$39.00	BP1614ABS	\$29.50
AH181610C	\$259.00	19.41 x 17.41 x 11.41 [493 x 442 x 290]	PDF	BP1816A	\$50.00	BP1816ABS	\$39.00
AH20168C	\$398.00	21.41 x 17.41 x 9.47 [544 x 442 x 241]	PDF	BP2016A	\$84.00	BP2016ABS	\$52.00
AH242410C*	\$653.00	25.41 x 25.41 x 11.41 [645 x 645 x 290]	PDF	BP2424A	\$92.00	BP2424ABS	\$62.00

*Includes integral mounting flange

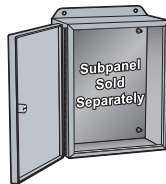
Notes: Subpanels must be ordered separately.
Dimensions in inches [millimeters].

Heartland Series Polycarbonate Enclosures

Opaque Door with Stainless Steel Latches, Mounting Feet



AH12106SS



Construction

- Polycarbonate with UV inhibitors
- Neoprene rope style gasket
- Poured polyurethane seamless gasket in select sizes
- Includes polycarbonate mounting feet kit
- 316 stainless steel cover screws and latches
- Panel mounting capability for fixed rear panel
- Rear wall-mounting screw size - #10-32x3/8
- All threaded brass inserts accept #10-32 screws
- #10-32x5/8 cover screw size
- 20-24 in-lb cover screw torque
- 1/4-20x1/2 mounting feet inserts
- 10-14 in-lb mounting feet torque
- Optional ABS Panel to allow unimpeded transmission of wireless signals
- Variable depth side mount capability
- Temperature Range -40°F to +248°F [-40°C to +120°C]

Listings

- UL File No: E319779
- NEMA Ratings 1, 3R, 4, 4X, and 12 [UL508A, UL50, and UL50e]
- IEC 60529 Ratings IP66
- Flammability Rating UL94-5V
- cULus, CE, REACH
- Outdoor UV Exposure (UL 746C) (f1) Rated



Heartland Series Polycarbonate Enclosures – Opaque Door with Stainless Steel Latches, Mounting Feet

Part Number	Price	Enclosure Overall Size HxWxD	Drawing Link	Aluminum Subpanel	Price	ABS Subpanel	Price
AH664SS	\$89.00	7.40 x 7.41 x 5.35 [188 x 188 x 136]	PDF	BP66A	\$11.25	BP66ABS	\$14.75
AH864SS	\$94.00	9.40 x 7.40 x 5.32 [239 x 188 x 135]	PDF	BP86A	\$13.50	BP86ABS	\$15.50
AH884SS	\$99.00	9.41 x 9.41 x 5.36 [239 x 239 x 136]	PDF	BP88A	\$19.00	—	
AH1084SS	\$115.00	11.41 x 9.41 x 5.89 [290 x 239 x 150]	PDF	BP108A	\$20.50	BP108ABS	\$18.75
AH1086SS	\$120.00	11.41 x 9.41 x 7.39 [290 x 239 x 188]	PDF	BP108A	\$20.50	BP108ABS	\$18.75
AH10106SS	\$126.00	11.41 x 11.41 x 6.47 [290 x 290 x 164]	PDF	BP1010A	\$24.00	BP1010ABS	\$20.50
AH12106SS	\$159.00	13.41 x 11.41 x 7.38 [341 x 290 x 187]	PDF	BP1210A	\$25.00	BP1210ABS	\$22.00
AH14126SS	\$187.00	15.40 x 13.40 x 7.39 [391 x 340 x 188]	PDF	BP1412A	\$30.00	BP1412ABS	\$25.50
AH16148SS	\$211.00	17.41 x 15.41 x 9.40 [442 x 391 x 239]	PDF	BP1614A	\$39.00	BP1614ABS	\$29.50
AH181610SS	\$250.00	19.41 x 17.41 x 11.41 [493 x 442 x 290]	PDF	BP1816A	\$50.00	BP1816ABS	\$39.00
AH20168SS	\$366.00	21.41 x 17.41 x 9.47 [544 x 442 x 241]	PDF	BP2016A	\$84.00	BP2016ABS	\$52.00
AH242410SS*	\$655.00	25.41 x 25.41 x 11.41 [645 x 645 x 290]	PDF	BP2424A	\$92.00	BP2424ABS	\$62.00

*Includes integral mounting flange

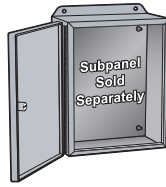
Notes: Subpanels must be ordered separately.
Dimensions in inches [millimeters].

Heartland Series Polycarbonate Enclosures

Smoked Door with Stainless Steel Latches, Mounting Feet



AH12106CSS



Construction

- Polycarbonate with UV inhibitors
- Neoprene rope style gasket
- Poured polyurethane seamless gasket in select sizes
- Includes polycarbonate mounting feet kit
- 316 stainless steel cover screw and latches
- Panel mounting capability for fixed rear panel
- Rear wall-mounting screw size #10-32x3/8
- All threaded brass inserts accept #10-32 screws
- #10-32x5/8 cover screw size
- 20-24 in-lb cover screw torque
- 1/4-20x1/2 mounting feet inserts
- 10-14 in-lb mounting feet torque
- Variable depth side mount capability
- Fully non-metallic hinge, does not penetrate inside enclosure
- Thick, robust side wall construction eliminates side wall flexing
- Sliding T-Nut allows for infinite panel adjustment back to front
- Optional ABS Panel to allow unimpeded transmission of wireless signals
- Aluminum back panel and swing-out panel mounting options
- Temperature Range -40°F to +248°F [-40°C to +120°C]

Listings

- UL File No: [E319779](#)
- NEMA Ratings 1, 3R, 4, 4X, and 12 [UL508A, UL50, and UL50e]
- IEC 60529 Ratings IP66
- Flammability Rating UL94-5V
- cULus, CE, REACH
- Outdoor UV Exposure (UL 746C) (f1) Rated



Heartland Series Polycarbonate Enclosures – Smoked Door with Stainless Steel Latches, Mounting Feet

Part Number	Price	Enclosure Overall Size HxWxD	Drawing Link	Aluminum Subpanel	Price	ABS Subpanel	Price
AH664CSS	\$96.00	7.40 x 7.41 x 5.35 [188 x 188 x 136]	PDF	BP66A	\$11.25	BP66ABS	\$14.75
AH864CSS	\$107.00	9.40 x 7.40 x 5.32 [239 x 188 x 135]	PDF	BP86A	\$13.50	BP86ABS	\$15.50
AH884CSS	\$113.00	9.41 x 9.41 x 5.36 [239 x 239 x 136]	PDF	BP88A	\$19.00	—	
AH1084CSS	\$136.00	11.41 x 9.41 x 5.89 [290 x 239 x 150]	PDF	BP108A	\$20.50	BP108ABS	\$18.75
AH1086CSS	\$140.00	11.41 x 9.41 x 7.39 [290 x 239 x 188]	PDF	BP108A	\$20.50	BP108ABS	\$18.75
AH10106CSS	\$148.00	11.41 x 11.41 x 6.47 [290 x 290 x 164]	PDF	BP1010A	\$24.00	BP1010ABS	\$20.50
AH12106CSS	\$178.00	13.41 x 11.41 x 7.38 [341 x 290 x 187]	PDF	BP1210A	\$25.00	BP1210ABS	\$22.00
AH14126CSS	\$196.00	15.40 x 13.40 x 7.39 [391 x 340 x 188]	PDF	BP1412A	\$30.00	BP1412ABS	\$25.50
AH16148CSS	\$240.00	17.41 x 15.41 x 9.40 [442 x 391 x 239]	PDF	BP1614A	\$39.00	BP1614ABS	\$29.50
AH181610CSS	\$278.00	19.41 x 17.41 x 11.41 [493 x 442 x 290]	PDF	BP1816A	\$50.00	BP1816ABS	\$39.00
AH20168CSS	\$428.00	21.41 x 17.41 x 9.47 [544 x 442 x 241]	PDF	BP2016A	\$84.00	BP2016ABS	\$52.00
AH242410CSS*	\$702.00	25.41 x 25.41 x 11.41 [645 x 645 x 290]	PDF	BP2424A	\$92.00	BP2424ABS	\$62.00

*Includes integral mounting flange

Notes: Subpanels must be ordered separately.

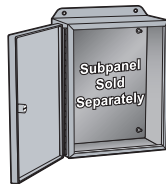
Dimensions in inches [millimeters].

Heartland Series Polycarbonate Enclosures

Opaque Door with Polycarbonate Latches, Mounting Flanges



AHF1086



Construction

- Polycarbonate
- Robotically-applied foam-in-place polyurethane seamless gasket
- Includes polycarbonate mounting flange kit
- 304 stainless steel cover screws
- Panel mounting capability for fixed rear panel
- Rear wall-mounting screw size #10-32x3/8
- All threaded brass inserts accept #10-32 screws
- #10-32x5/8 cover screw size
- 20-24in-lb cover screw torque
- 1/4-20x1/2 mounting flange inserts
- 10-14 in-lb mounting flange torque
- Polycarbonate with UV inhibitors hinge and latch hardware
- Variable depth side mount capability
- Fully non-metallic hinge, does not penetrate inside enclosure
- Thick, robust side wall construction eliminates side wall flexing
- Sliding T-Nut allows for infinite panel adjustment back to front
- Optional ABS Panel to allow unimpeded transmission of wireless signals
- Aluminum back panel and swing-out panel mounting options
- Temperature Range -40°F to +248°F

[-40°C to +120°C]

Listings

- UL File No: E319779
- NEMA Ratings 1, 3R, 4, 4X, and 12 [UL508A, UL50, and UL50e]
- IEC 60529 Ratings IP66
- Flammability Rating UL94-5V
- cULus, CE, REACH
- Outdoor UV Exposure (UL 746C) (f1) Rated



Heartland Series Polycarbonate Enclosures – Opaque Door with Polycarbonate Latches, Mounting Flanges

Part Number	Price	Enclosure Overall Size HxWxD	Drawing Link	Aluminum Subpanel	Price	ABS Subpanel	Price
AHF664	\$92.00	7.40 x 7.41 x 5.35 [188 x 188 x 136]	PDF	BP66A	\$11.25	BP66ABS	\$14.75
AHF864	\$97.00	9.40 x 7.40 x 5.32 [239 x 188 x 135]	PDF	BP86A	\$13.50	BP86ABS	\$15.50
AHF884	\$105.00	9.41 x 9.41 x 5.36 [239 x 239 x 136]	PDF	BP88A	\$19.00	—	
AHF1084	\$120.00	11.41 x 9.41 x 5.89 [290 x 239 x 150]	PDF	BP108A	\$20.50	BP108ABS	\$18.75
AHF1086	\$124.00	11.41 x 9.41 x 7.39 [290 x 239 x 188]	PDF	BP108A	\$20.50	BP108ABS	\$18.75
AHF10106	\$134.00	11.41 x 11.41 x 6.47 [290 x 290 x 164]	PDF	BP1010A	\$24.00	BP1010ABS	\$20.50
AHF12106	\$165.00	13.41 x 11.41 x 7.38 [341 x 290 x 187]	PDF	BP1210A	\$25.00	BP1210ABS	\$22.00
AHF14126	\$195.00	15.40 x 13.40 x 7.39 [391 x 340 x 188]	PDF	BP1412A	\$30.00	BP1412ABS	\$25.50
AHF16148	\$220.00	17.41 x 15.41 x 9.40 [442 x 391 x 239]	PDF	BP1614A	\$39.00	BP1614ABS	\$29.50
AHF181610	\$260.00	19.41 x 17.41 x 11.41 [493 x 442 x 290]	PDF	BP1816A	\$50.00	BP1816ABS	\$39.00
AHF20168	\$368.00	21.41 x 17.41 x 9.47 [544 x 442 x 241]	PDF	BP2016A	\$84.00	BP2016ABS	\$52.00

*Includes integral mounting flange

Notes: Subpanels must be ordered separately.

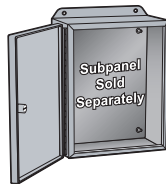
Dimensions in inches [millimeters].

Heartland Series Polycarbonate Enclosures

Smoked Door with Polycarbonate Latches, Mounting Flanges



AHF1086C



Construction

- Polycarbonate
- Robotically-applied foam-in-place polyurethane seamless gasket
- Includes polycarbonate mounting flange kit
- 304 stainless steel cover screws
- Panel mounting capability for fixed rear panel
- Rear wall-mounting screw size #10-32x3/8
- All threaded brass inserts accept #10-32 screws
- #10-32x5/8 cover screw size
- 20-24in-lb cover screw torque
- 1/4-20x1/2 mounting flange inserts
- 10-14 in-lb mounting flange torque
- Polycarbonate with UV inhibitors hinge and latch hardware
- Variable depth side mount capability
- Fully noN-metallic hinge, does not penetrate inside enclosure
- Thick, robust side wall construction eliminates side wall flexing
- Sliding T-Nut allows for infinite panel adjustment back to front
- Optional ABS Panel to allow unimpeded transmission of wireless signals
- Aluminum back panel and swing-out panel mounting options
- Temperature Range -40°F to +248°F [-40°C to +120°C]

Listings

- UL File No: [E319779](#)
- NEMA Ratings 1, 3R, 4, 4X, and 12 [UL508A, UL50, and UL50e]
- IEC 60529 Ratings IP66
- Flammability Rating UL94-5V
- cULus, CE, REACH
- Outdoor UV Exposure (UL 746C) (f1) Rated



Heartland Series Polycarbonate Enclosures – Smoked Door with Polycarbonate Latches, Mounting Flanges

Part Number	Price	Enclosure Overall Size HxWxD	Drawing Link	Aluminum Subpanel	Price	ABS Subpanel	Price
AHF664C	\$99.00	7.40 x 7.41 x 5.35 [188 x 188 x 136]	PDF	BP66A	\$11.25	BP66ABS	\$14.75
AHF864C	\$108.00	9.40 x 7.40 x 5.32 [239 x 188 x 135]	PDF	BP86A	\$13.50	BP86ABS	\$15.50
AHF884C	\$118.00	9.41 x 9.41 x 5.36 [239 x 239 x 136]	PDF	BP88A	\$19.00	—	
AHF1084C	\$139.00	11.41 x 9.41 x 5.89 [290 x 239 x 150]	PDF	BP108A	\$20.50	BP108ABS	\$18.75
AHF1086C	\$144.00	11.41 x 9.41 x 7.39 [290 x 239 x 188]	PDF	BP108A	\$20.50	BP108ABS	\$18.75
AHF10106C	\$154.00	11.41 x 11.41 x 6.47 [290 x 290 x 164]	PDF	BP1010A	\$24.00	BP1010ABS	\$20.50
AHF12106C	\$182.00	13.41 x 11.41 x 7.38 [341 x 290 x 187]	PDF	BP1210A	\$25.00	BP1210ABS	\$22.00
AHF14126C	\$202.00	15.40 x 13.40 x 7.39 [391 x 340 x 188]	PDF	BP1412A	\$30.00	BP1412ABS	\$25.50
AHF16148C	\$246.00	17.41 x 15.41 x 9.40 [442 x 391 x 239]	PDF	BP1614A	\$39.00	BP1614ABS	\$29.50
AHF181610C	\$286.00	19.41 x 17.41 x 11.41 [493 x 442 x 290]	PDF	BP1816A	\$50.00	BP1816ABS	\$39.00
AHF20168C	\$426.00	21.41 x 17.41 x 9.47 [544 x 442 x 241]	PDF	BP2016A	\$84.00	BP2016ABS	\$52.00

*Includes integral mounting flange

Notes: Subpanels must be ordered separately.

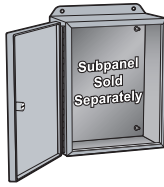
Dimensions in inches [millimeters].

Heartland Series Polycarbonate Enclosures

Opaque Door with Polycarbonate Latches, Mounting Feet and Shelf



AHWD12106



Construction

- Polycarbonate
- Robotically-applied foam-in-place polyurethane seamless gasket
- Includes polycarbonate mounting feet kit
- 304 stainless steel cover screws
- Includes internal shelf
- Panel mounting capability for fixed rear panel
- Rear wall-mounting screw size #10-32x3/8
- All threaded brass inserts accept #10-32 screws
- #10-32x5/8 cover screw size
- 20-24in-lb cover screw torque
- 1/4-20x1/2 mounting feet inserts
- 10-14 in-lb mounting feet torque
- Fully non-metallic hinge, does not penetrate inside enclosure
- Thick, robust side wall construction eliminates side wall flexing
- Optional ABS Panel to allow unimpeded transmission of wireless signals
- Temperature Range -40°F to +248°F [-40°C to +120°C]

Listings

- UL File No: [E319779](#)
- NEMA Ratings 1, 3R, 4, 4X, and 12 [UL508A, UL50, and UL50e]
- IEC 60529 Ratings IP66
- Flammability Rating UL94-5V
- cULus, CE, REACH
- Outdoor UV Exposure (UL 746C) (f1) Rated



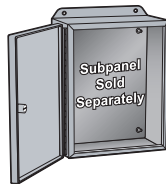
Heartland Series Polycarbonate Enclosures – Opaque Door with Polycarbonate Latches, Mounting Feet and Shelf							
Part Number	Price	Enclosure Overall Size HxWxD	Drawing Link	Aluminum Subpanel	Price	ABS Subpanel	Price
AHWD10106	\$155.00	11.41 x 11.41 x 6.47 [290 x 290 x 164]	PDF	—		BP1010ABS	\$20.50
AHWD12106	\$189.00	13.41 x 11.41 x 7.38 [341 x 290 x 187]	PDF	BP1210A	\$25.00	BP1210ABS	\$22.00
AHWD14126	\$217.00	15.40 x 13.40 x 7.39 [391 x 340 x 188]	PDF	BP1412A	\$30.00	BP1412ABS	\$25.50
AHWD16148	\$256.00	17.41 x 15.41 x 9.40 [442 x 391 x 239]	PDF	BP1614A	\$39.00	BP1614ABS	\$29.50
AHWD181610	\$312.00	19.41 x 17.41 x 11.41 [493 x 442 x 290]	PDF	BP1816A	\$50.00	BP1816ABS	\$39.00
AHWD20168	\$403.00	21.41 x 17.41 x 9.47 [544 x 442 x 241]	PDF	BP2016A	\$84.00	BP2016ABS	\$52.00
AHWD242410*	\$728.00	25.41 x 25.41 x 11.41 [645 x 645 x 290]	PDF	BP2424A	\$92.00	BP2424ABS	\$62.00
*Includes integral mounting flange Notes: Subpanels must be ordered separately. Dimensions in inches [millimeters].							

Heartland SL Series Polycarbonate Enclosures

Opaque Door with Polycarbonate Latches, Mounting Feet



AH20164



Construction

- Polycarbonate
- Robotically-applied foam-in-place polyurethane seamless gasket
- 304 stainless steel cover screws
- Includes integral mounting feet
- Panel mounting capability for fixed rear panel
- Rear wall-mounting screw size #10-32x3/8
- All threaded brass inserts accept #10-32 screws
- #10-32x5/8 cover screw size
- 20-24in-lb cover screw torque
- 1/4-20x1/2 mounting feet inserts
- 10-14 in-lb mounting feet torque
- Fully non-metallic hinge, does not penetrate inside enclosure
- Thick, robust side wall construction eliminates side wall flexing
- Optional ABS Panel to allow unimpeded transmission of wireless signals
- Temperature Range -40°F to +248°F [-40°C to +120°C]

Listings

- UL File No: [E319779](#)
- NEMA Ratings 1, 3R, 4, 4X, and 12 [UL508A, UL50, and UL50e]
- IEC 60529 Ratings IP66
- Flammability Rating UL94-5V
- cULus, CE, REACH
- Outdoor UV Exposure (UL 746C) (f1) Rated



Heartland SL Series Polycarbonate Enclosures – Opaque Door with Polycarbonate Latches, Mounting Feet

Part Number	Price	Enclosure Overall Size HxWxD	Drawing Link	Aluminum Subpanel	Price	ABS Subpanel	Price
AH1083	\$102.00	11.41 x 9.41 x 4.64 [290 x 239 x 118]	PDF	BP108A	\$20.50	BP108ABS	\$18.75
AH12104	\$141.00	13.41 x 11.41 x 5.38 [341 x 290 x 137]	PDF	BP1210A	\$25.00	BP1210ABS	\$22.00
AH14124	\$165.00	15.40 x 13.40 x 5.39 [391 x 340 x 137]	PDF	BP1412A	\$30.00	BP1412ABS	\$25.50
AH16144	\$187.00	17.41 x 15.41 x 5.35 [442 x 391 x 136]	PDF	BP1614A	\$39.00	BP1614ABS	\$29.50
AH18164	\$214.00	19.40 x 17.41 x 5.41 [493 x 442 x 137]	PDF	BP1816A	\$50.00	BP1816ABS	\$39.00
AH20164	\$323.00	21.41 x 17.41 x 5.47 [544 x 442 x 139]	PDF	BP2016A	\$84.00	BP2016ABS	\$52.00
AH24246*	\$579.00	25.41 x 25.41 x 7.41 [645 x 645 x 188]	PDF	BP66A	\$11.25	BP66ABS	\$14.75

*Includes integral mounting flange

Notes: Subpanels must be ordered separately.

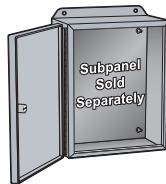
Dimensions in inches [millimeters].

Heartland SL Series Polycarbonate Enclosures

Smoked Door with Polycarbonate Latches, Mounting Feet



AH20164C



Construction

- Polycarbonate
- Robotically-applied foam-in-place polyurethane seamless gasket
- 304 stainless steel cover screws
- Includes integral mounting feet
- Panel mounting capability for fixed rear panel
- Rear wall-mounting screw size #10-32x3/8
- All threaded brass inserts accept #10-32 screws
- #10-32x5/8 cover screw size
- 20-24in-lb cover screw torque
- 1/4-20x1/2 mounting feet inserts
- 10-14 in-lb mounting feet torque
- Polycarbonate with UV inhibitors hinge and latch hardware
- Fully noN-metallic hinge, does not penetrate inside enclosure
- Thick, robust side wall construction eliminates side wall flexing
- Optional ABS Panel to allow unimpeded transmission of wireless signals
- Temperature Range -40°F to +248°F [-40°C to +120°C]

Listings

- UL File No: [E319779](#)
- NEMA Ratings 1, 3R, 4, 4X, and 12 [UL508A, UL50, and UL50e]
- IEC 60529 Ratings IP66
- Flammability Rating UL94-5V
- cULus, CE, REACH
- Outdoor UV Exposure (UL 746C) (f1) Rated



Heartland SL Series Polycarbonate Enclosures – Smoked Door with Polycarbonate Latches, Mounting Feet

Part Number	Price	Enclosure Overall Size HxWxD	Drawing Link	Aluminum Subpanel	Price	ABS Subpanel	Price
AH1083C	\$120.00	11.41 x 9.41 x 4.64 [290 x 239 x 118]	PDF	BP108A	\$20.50	BP108ABS	\$18.75
AH12104C	\$157.00	13.41 x 11.41 x 5.38 [341 x 290 x 137]	PDF	BP1210A	\$25.00	BP1210ABS	\$22.00
AH14124C	\$173.00	15.40 x 13.40 x 5.39 [391 x 340 x 137]	PDF	BP1412A	\$30.00	BP1412ABS	\$25.50
AH16144C	\$212.00	17.41 x 15.41 x 5.35 [442 x 391 x 136]	PDF	BP1614A	\$39.00	BP1614ABS	\$29.50
AH18164C	\$251.00	19.40 x 17.41 x 5.41 [493 x 442 x 137]	PDF	BP1816A	\$50.00	BP1816ABS	\$39.00
AH20164C	\$378.00	21.41 x 17.41 x 5.47 [544 x 442 x 139]	PDF	BP2016A	\$84.00	BP2016ABS	\$52.00
AH24246C*	\$620.00	25.41 x 25.41 x 7.41 [645 x 645 x 188]	PDF	BP66A	\$11.25	BP66ABS	\$14.75

*Includes integral mounting flange

Notes: Subpanels must be ordered separately.

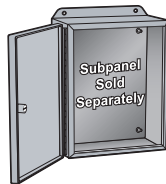
Dimensions in inches [millimeters].

Heartland SL Series Polycarbonate Enclosures

Opaque Door with Stainless Steel Latches, Mounting Feet



AH20164SS



Construction

- Polycarbonate
- Robotically-applied foam-in-place polyurethane seamless gasket
- 304 stainless steel cover screws
- Includes integral mounting feet
- Panel mounting capability for fixed rear panel
- Rear wall-mounting screw size #10-32x3/8
- All threaded brass inserts accept #10-32 screws
- #10-32x5/8 cover screw size
- 20-24in-lb cover screw torque
- 1/4-20x1/2 mounting feet inserts
- 10-14 in-lb mounting feet torque
- Polycarbonate with UV inhibitors hinge and latch hardware
- Fully non-metallic hinge, does not penetrate inside enclosure
- Thick, robust side wall construction eliminates side wall flexing
- Optional ABS Panel to allow unimpeded transmission of wireless signals
- Temperature Range -40°F to +248°F [-40°C to +120°C]

Listings

- UL File No: [E319779](#)
- NEMA Ratings 1, 3R, 4, 4X, and 12 [UL508A, UL50, and UL50e]
- IEC 60529 Ratings IP66
- Flammability Rating UL94-5V
- cULus, CE, REACH
- Outdoor UV Exposure (UL 746C) (f1) Rated



Heartland SL Series Polycarbonate Enclosures – Opaque Door with Stainless Steel Latches, Mounting Feet

Part Number	Price	Enclosure Overall Size HxWxD	Drawing Link	Aluminum Subpanel	Price	ABS Subpanel	Price
AH1083SS	\$112.00	11.41 x 9.41 x 4.64 [290 x 239 x 118]	PDF	BP108A	\$20.50	BP108ABS	\$18.75
AH12104SS	\$152.00	13.41 x 11.41 x 5.38 [341 x 290 x 137]	PDF	BP1210A	\$25.00	BP1210ABS	\$22.00
AH14124SS	\$178.00	15.40 x 13.40 x 5.39 [391 x 340 x 137]	PDF	BP1412A	\$30.00	BP1412ABS	\$25.50
AH16144SS	\$200.00	17.41 x 15.41 x 5.35 [442 x 391 x 136]	PDF	BP1614A	\$39.00	BP1614ABS	\$29.50
AH18164SS	\$230.00	19.40 x 17.41 x 5.41 [493 x 442 x 137]	PDF	BP1816A	\$50.00	BP1816ABS	\$39.00
AH20164SS	\$348.00	21.41 x 17.41 x 5.47 [544 x 442 x 139]	PDF	BP2016A	\$84.00	BP2016ABS	\$52.00
AH24246SS*	\$618.00	25.41 x 25.41 x 7.41 [645 x 645 x 188]	PDF	BP66A	\$11.25	BP66ABS	\$14.75

*Includes integral mounting flange

Notes: Subpanels must be ordered separately.

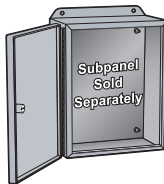
Dimensions in inches [millimeters].

Heartland SL Series Polycarbonate Enclosures

Smoked Door with Stainless Steel Latches, Mounting Feet



AH20164CSS



Construction

- Polycarbonate
- Robotically-applied foam-in-place polyurethane seamless gasket
- 304 stainless steel cover screws
- Includes integral mounting feet
- Panel mounting capability for fixed rear panel
- Rear wall-mounting screw size #10-32x3/8
- All threaded brass inserts accept #10-32 screws
- #10-32x5/8 cover screw size
- 20-24in-lb cover screw torque
- 1/4-20x1/2 mounting feet inserts
- 10-14 in-lb mounting feet torque
- Polycarbonate with UV inhibitors hinge and latch hardware
- Fully noN-metallic hinge, does not penetrate inside enclosure
- Thick, robust side wall construction eliminates side wall flexing
- Optional ABS Panel to allow unimpeded transmission of wireless signals
- Temperature Range -40°F to +248°F [-40°C to +120°C]

Listings

- UL File No: [E319779](#)
- NEMA Ratings 1, 3R, 4, 4X, and 12 [UL508A, UL50, and UL50e]
- IEC 60529 Ratings IP66
- Flammability Rating UL94-5V
- cULus, CE, REACH
- Outdoor UV Exposure (UL 746C) (f1) Rated



Heartland SL Series Polycarbonate Enclosures – Smoked Door with Stainless Steel Latches, Mounting Feet

Part Number	Price	Enclosure Overall Size HxWxD	Drawing Link	Aluminum Subpanel	Price	ABS Subpanel	Price
AH1083CSS	\$131.00	11.41 x 9.41 x 4.64 [290 x 239 x 118]	PDF	BP108A	\$20.50	BP108ABS	\$18.75
AH12104CSS	\$169.00	13.41 x 11.41 x 5.38 [341 x 290 x 137]	PDF	BP1210A	\$25.00	BP1210ABS	\$22.00
AH14124CSS	\$185.00	15.40 x 13.40 x 5.39 [391 x 340 x 137]	PDF	BP1412A	\$30.00	BP1412ABS	\$25.50
AH16144CSS	\$225.00	17.41 x 15.41 x 5.35 [442 x 391 x 136]	PDF	BP1614A	\$39.00	BP1614ABS	\$29.50
AH18164CSS	\$269.00	19.40 x 17.41 x 5.41 [493 x 442 x 137]	PDF	BP1816A	\$50.00	BP1816ABS	\$39.00
AH20164CSS	\$404.00	21.41 x 17.41 x 5.47 [544 x 442 x 139]	PDF	BP2016A	\$84.00	BP2016ABS	\$52.00
AH24246CSS*	\$661.00	25.41 x 25.41 x 7.41 [645 x 645 x 188]	PDF	BP66A	\$11.25	BP66ABS	\$14.75

*Includes integral mounting flange

Notes: Subpanels must be ordered separately.

Dimensions in inches [millimeters].

Commander Series Polycarbonate Pushbutton Enclosures

NEMA 1, 3R, 4X, 6P, and 12 with Lift-off Cover



Applications

AttaBox offers an all-polycarbonate product with blank covers or a choice of one- or two-hole pushbutton openings for both 22mm and 30mm hardware. These enclosures include the external flush wall design, unobstructed internal sidewalls, polycarbonate cover screws, and watertight seal.



COPC432



COPC1PB



COPC2PB

Construction

- High impact-resistant polycarbonate, gray in color with gloss finish
- Poured-in-place seamless gasket for water-tight and dust-tight seal
- Mounting wells located under the cover/ outside the gasket area
- Removable cover with polycarbonate screws (provided). Torque cover screws to 16 -20 lb-in (1.8-2.2 N-m)
- Rounded edges help to prevent collection of dust and debris
- Available with 22mm or 30mm pushbutton holes, or blank cover

Listings

- UL/cUL File # E64358
- NEMA Ratings 1, 3R, 4X, 6P, and 12
- [UL508A, UL50 and UL50e]
- IEC 60529 Ratings IP66, IP68
- Temperature Range -20°F to +240°F [-29°C to +115°C]
- Flammability Rating UL94-5VA
- Certifications cULus, IEC, REACH
- Outdoor UV Exposure (UL 746C) (f1) Rated



Polycarbonate Pushbutton Enclosures – Commander Series NEMA 1, 3R, 4X, 6P, and 12

Part Number	Price	# Holes	Pushbutton Size	Enclosure Size H x W x D
<u>COPC432</u>	\$59.00	0	—	4.34 x 3.16 x 2.79 [110 x 80 x 71]
<u>COPC533</u>	\$61.00	0	—	5.12 x 3.16 x 3.54 [130 x 80 x 90]
<u>COPC1PB</u>	\$64.00	1	30mm	4.34 x 3.16 x 2.79 [110 x 80 x 71]
<u>COPC2PB</u>	\$70.00	2	30mm	5.12 x 3.16 x 3.54 [130 x 80 x 90]
<u>COPC1PB22</u>	\$64.00	1	22mm	4.34 x 3.16 x 2.79 [110 x 80 x 71]
<u>COPC2PB22</u>	\$70.00	2	22mm	5.12 x 3.16 x 3.54 [130 x 80 x 90]

Dimensions in inches [millimeters].

Commander Series Polycarbonate Pushbutton Enclosures

NEMA 1, 3R, 4X, 6P, and 12



[YW-COPC1PB22](#)

Applications

AttaBox offers an all-polycarbonate product with blank covers or a choice of one- or two-hole pushbutton openings for both 22mm and 30mm hardware. These enclosures include the external flush wall design, unobstructed internal sidewalls, cover screws, and watertight seal.

Construction

- High impact-resistant polycarbonate, gloss finished black base with a yellow lid
- Poured-in-place seamless gasket for water-tight and dust-tight seal
- Mounting wells located under the cover/ outside the gasket area
- Removable cover with polycarbonate screws (provided). Torque cover screws to 16 -20 lb-in [1.8-2.2 N·m]
- Rounded edges help to prevent collection of dust and debris
- Available with 22mm or 30mm pushbutton holes, or blank cover

Listings

- UL/cUL File # E319779
- NEMA Ratings 1, 3R, 4X, 6P, and 12 [UL508A, UL50 and UL50e]
- IEC 60529 Ratings IP68
- Temperature Range -20°F to +240°F [-29°C to +115°C]
- Flammability Rating UL94-5VA
- Certifications cULus, IEC, REACH
- Outdoor UV Exposure (UL 746C) (f1) Rated



Polycarbonate Pushbutton Enclosures – Commander Series NEMA 1, 3R, 4X, 6P, 12

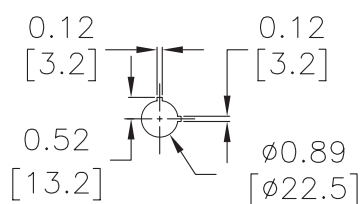
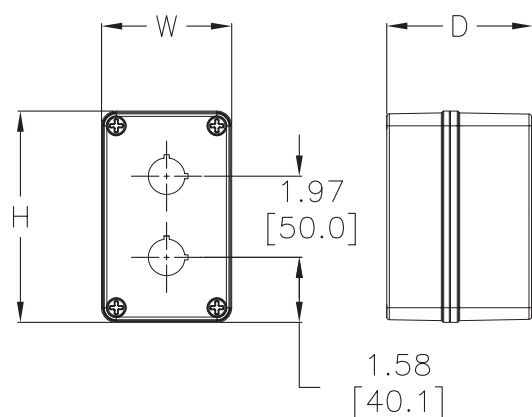
Part Number	Price	# Holes	Pushbutton Size (mm)	Enclosure Size H x W x D	Drawing Links
<u>YW-COPC1PB22</u>	\$79.00	1	22	4.34 x 3.16 x 2.79 [110 x 80 x 71]	<u>PDF</u>
<u>YW-COPC1PB</u>	\$79.00	1	30	4.34 x 3.16 x 2.79 [110 x 80 x 71]	<u>PDF</u>
<u>YW-COPC2PB22</u>	\$86.00	2	22	5.12 x 3.16 x 3.54 [130 x 80 x 90]	<u>PDF</u>
<u>YW-COPC2PB</u>	\$86.00	2	30	5.12 x 3.16 x 3.54 [130 x 80 x 90]	<u>PDF</u>

Dimensions in inches [millimeters].

Commander Series Polycarbonate Pushbutton Enclosures

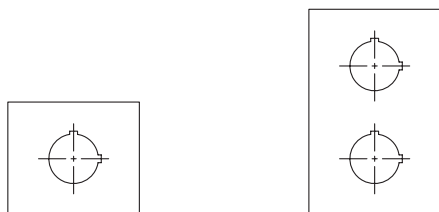
NEMA 1, 3R, 4X, 6P, and 12 with Lift-off Cover

Dimensions



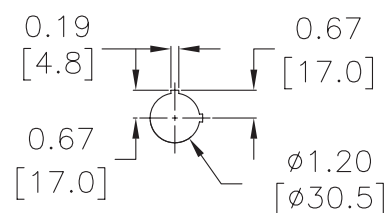
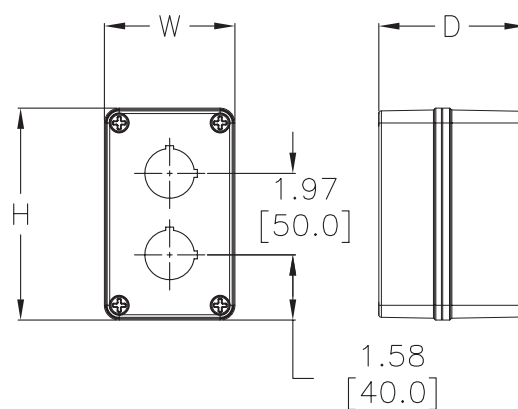
1PB-22/2PB-22
HOLE DETAIL

PB HOLE ARRANGEMENTS



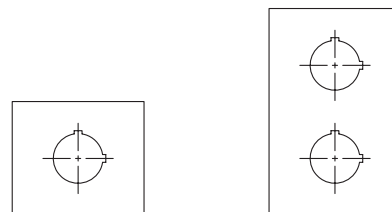
SINGLE PB-22

DOUBLE PB-22



1PB/2PB
HOLE DETAIL

PB HOLE ARRANGEMENTS



SINGLE PB

DOUBLE PB

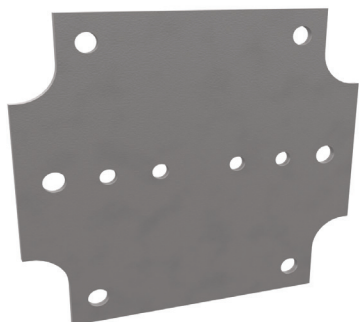
Subpanels for BantamBox Series Enclosures


AttoBox

A ROBROY ENCLOSURES™ BRAND

Phenolic Resin Hard Paper Subpanels

Lightweight, durable and electrically resistant. Includes mounting hardware.


[BPB0808P](#)

BantamBox Series Subpanels		
Part Number	Price	Subpanel Size
<u>BPB0808P</u>	\$5.25	2.83 x 2.76 [72 x 70]
<u>BPB1280P</u>	\$5.25	4.33 x 2.76 [110 x 70]
<u>BPB1680P</u>	\$6.25	5.91 x 2.76 [150 x 70]
<u>BPB1212P</u>	\$8.00	4.41 x 4.33 [112 x 110]
<u>BPB1612P</u>	\$8.25	5.94 x 4.41 [151 x 112]
<u>BPB2012P</u>	\$7.50	7.44 x 4.29 [189 x 109]
<u>BPB2015P</u>	\$10.50	7.52 x 5.59 [191 x 142]
<u>BPB2516P</u>	\$12.50	9.53 x 5.98 [242 x 152]
Note: Dimensions in inches [millimeters].		

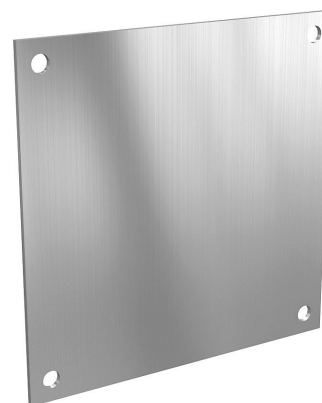
Subpanels for Heartland Series Enclosures

Aluminum Subpanels

- Material: 3003-H14 aluminum
- Finish: Mill



Aluminum Subpanels				
Part Number	Price	Subpanel Size HxW	Fits Heartland series Enclosures	Drawing Link
BP66A	\$11.25	4.88 x 4.88 [124 x 124]	AHx664xxx	PDF
BP86A	\$13.50	6.88 x 4.88 [175 x 124]	AHx864xxx	PDF
BP88A	\$19.00	6.88 x 6.88 [175 x 175]	AHx884xxx	PDF
BP108A	\$20.50	8.88 x 6.88 [226 x 175]	AH1083xxx AH1084xxx AHx1086xxx	PDF
BP1010A	\$24.00	8.88 x 8.88 [226 x 226]	AHxx10106xxx	PDF
BP1210A	\$25.00	10.88 x 8.88 [276 x 226]	AH12104xxx AHxx12106xxx	PDF
BP1412A	\$30.00	12.88 x 10.88 [327 x 276]	AH14124xxx AHxx14126xxx	PDF
BP1614A	\$39.00	14.88 x 12.88 [378 x 327]	AH16144xxx AHxx16148xxx	PDF
BP1816A	\$50.00	16.88 x 14.88 [429 x 378]	AH18164xxx AHxx181610xxx	PDF
BP2016A	\$84.00	18.88 x 14.88 [480 x 378]	AH20164xxx AHxx20168xxx	PDF
BP2424A	\$92.00	22.88 x 22.88 [581 x 581]	AH24246xxx AH242410xxx	PDF
Note: Dimensions in inches (millimeters).				



BP66A

Aluminum Swing Panel Kits

- Material: 3003-H14 aluminum
- Finish: Mill
- Includes swing panel, (4) AHSPM brackets and mounting screws

Aluminum Swing Panel Kits				
Part Number	Price	Subpanel Size HxW	Fits Heartland series Enclosures	Drawing Link
AH66SPK	\$53.00	5.63 x 5.63 [143 x 143]	AHx664xxx	PDF
AH86SPK	\$54.00	7.63 x 5.63 [194 x 143]	AHx864xxx	PDF
AH88SPK	Retired	7.63 x 7.63 [194 x 194]	AH884xxx	PDF
AH108SPK	\$59.00	9.63 x 7.63 [245 x 194]	AHx1084xxx AHx1086xxx	PDF
AH1010SPK	\$85.00	9.63 x 9.63 [245 x 245]	AHxx10106xxx	PDF
AH1210SPK	\$63.00	11.63 x 9.63 [295 x 245]	AHxx12106xxx	PDF
AH1412SPK	\$68.00	13.63 x 11.63 [346 x 295]	AHxx14126xxx	PDF
AH1614SPK	\$73.00	15.63 x 13.63 [397 x 346]	AHxx16148xxx	PDF
AH1816SPK	\$78.00	17.63 x 15.63 [448 x 397]	AH18164xxx AHxx181610xxx	PDF
AH2016SPK	\$121.00	19.63 x 15.63 [499 x 397]	AHxx20168xxx	PDF
AH2424SPK	\$88.00	23.63 x 23.63 [600 x 600]	AHxx242410xxx	PDF
Note: Dimensions in inches (millimeters). Not compatible with Heartland SL enclosures				



AH66SPK

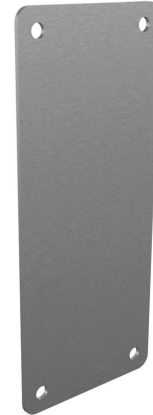
Subpanels for Heartland Series Enclosures

Aluminum Side Panels

- Material: 3003-H14 aluminum
- Finish: Mill



Aluminum Subpanels				
Part Number	Price	Subpanel Size HxW	Fits Heartland series Enclosures	Drawing Link
SP6	\$53.00	5.00 x 3.00 [127 x 76]	AH664xxx AHF664x	PDF
SP8	\$54.00	7.00 x 3.00 [178 x 76]	AH864xxx AHF864x AH884xxx AHF884x	PDF
SP10	\$57.00	9.00 x 3.50 [229 x 89]	AH1084xxx AHF1084x AH10xx6xxx AHF10xx6x	PDF
SP12	\$61.00	11.00 x 5.00 [279 x 127]	AH12106xxx AHF12106x	PDF
SP14	\$64.00	13.00 x 5.00 [330 x 127]	AH14126xxx AHF14126x	PDF
SP16	\$71.00	15.00 x 7.00 [381 x 178]	AH16148xxx AHF16148x	PDF
SP18	\$82.00	17.00 x 9.00 [432 x 229]	AH181610xxx AHF181610x	PDF
SP20	\$84.00	19.00 x 7.00 [483 x 178]	AH20168xxx AHF20168x	PDF
SP24	\$92.00	23.00 x 9.00 [584 x 229]	AH242410xxx	PDF
Note: Dimensions in inches (millimeters). Corrosion resistant slot nut fastening hardware kit included				

[SP8](#)

ABS Plastic Subpanels

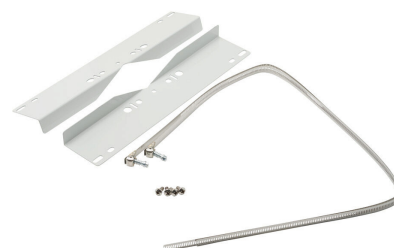
- Material: ABS plastic
- Finish: Mill

ABS plastic Subpanels				
Part Number	Price	Subpanel Size HxW	Fits Heartland series Enclosures	Drawing Link
BP66ABS	\$14.75	4.75 x 4.75 [121 x 121]	AHx664xxx	PDF
BP86ABS	\$15.50	6.75 x 4.75 [171 x 121]	AHx864xxx	PDF
BP108ABS	\$18.75	8.75 x 6.75 [222 x 171]	AH1083xxx AH1084xxx AHx1086xxx	PDF
BP1010ABS	\$20.50	8.75 x 8.75 [222 x 222]	AHxx10106xxx	PDF
BP1210ABS	\$22.00	10.75 x 8.75 [273 x 222]	AH12104xxx AHxx12106xxx	PDF
BP1412ABS	\$25.50	12.75 x 10.75 [324 x 273]	AH14124xxx AHxx14126xxx	PDF
BP1614ABS	\$29.50	14.75 x 12.75 [375 x 324]	AH16144xxx AHxx16148xxx	PDF
BP1816ABS	\$39.00	16.75 x 14.75 [425 x 375]	AH18164xxx AHxx181610xxx	PDF
BP2016ABS	\$52.00	18.75 x 14.75 [476 x 375]	AH20164xxx AHxx20168xxx	PDF
BP2424ABS	\$62.00	22.75 x 22.75 [578 x 578]	AH24246xxx AH242410xxx	PDF
Note: Dimensions in inches (millimeters).				

[BP108ABS](#)



Heartland Series – Enclosure Pole Mount Kits			
Part Number	Price	For Pole Diameter	Fits Enclosure Width
<u>PM6-8</u>	\$72.00	3.00 -12.00 [76- 305]	6.00 - 8.00 [152 - 203]
<u>PM10-12</u>	\$78.00		10.00 - 12.00 [254 - 305]
<u>PM14-16</u>	\$84.00		14.00 - 16.00 [356 - 406]
<u>PM18-24</u>	\$98.00		18.00 - 24.00 [457 - 610]
Note: Dimensions in inches [millimeters].			

**PM14-16****REV60****REV80**

Heartland Series – Enclosure Vents		
Part Number	Price	Description
<u>REAH-V60</u>	\$16.25	vent, 60mm, polycarbonate , maintains NEMA 3R rating.
<u>REAH-V80</u>	\$21.50	vent, 80mm, polycarbonate , not UL rated, enclosure is NEMA 1 when vent is installed



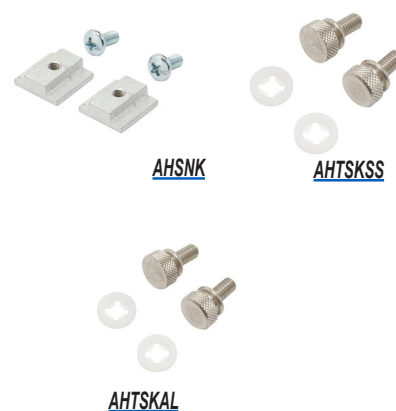
Enclosure Latch Kits		
Part Number	Price	Description
<u>AHLKSS</u>	\$13.25	latch, replacement, quick-release, 304 stainless steel Package of 2
<u>AHLK</u>	\$11.00	latch, replacement, quick-release, polycarbonate Package of 2



Accessory Kit		
Part Number	Price	Description
<u>AHAK</u>	\$14.00	mounting feet kit, polycarbonate Includes (4) mounting feet and mounting hardware



Enclosure Replacement Fasteners		
Part Number	Price	Description
<u>AHSNK</u>	\$23.00	slot nut kit, #10-32 UNF x 0375in, Phillips pan head, zinc plated steel Package of 2 Includes screw and galvanized steel slot nut
<u>AHTSKSS</u>	\$9.75	thumb screw, replacement, #10-32 UNF x 0375in, stainless steel Package of 2 Nylon washer included
<u>AHTSKAL</u>	\$8.00	thumb screw, replacement, #10-32 UNF x 0375in, aluminum Package of 2 Nylon washer included



Enclosure Swing Panel Mounts		
Part Number	Price	Description
<u>AHSPM</u>	\$32.50	AttaBox Heartland series swing panel bracket, polycarbonate. Package of 4. For use with Heartland series enclosures. Mounting screws included.





Mounting Flanges		
Part Number	Price	Description
<u>MFK6</u>	\$23.50	mounting flanges, replacement, polycarbonate For use with 6in wide Heartland series enclosures Includes (2) mounting flanges and mounting hardware
<u>MFK8</u>	\$28.00	mounting flanges, replacement, polycarbonate For use with 8in wide Heartland series enclosures Includes (2) mounting flanges and mounting hardware
<u>MFK10</u>	\$31.50	mounting flanges, replacement, polycarbonate For use with 10in wide Heartland series enclosures Includes (2) mounting flanges and mounting hardware
<u>MFK12</u>	\$35.50	mounting flanges, replacement, polycarbonate For use with 12in wide Heartland series enclosures Includes (2) mounting flanges and mounting hardware
<u>MFK14</u>	\$39.00	mounting flanges, replacement, polycarbonate For use with 14in wide Heartland series enclosures Includes (2) mounting flanges and mounting hardware
<u>MFK16</u>	\$43.00	mounting flanges, replacement, polycarbonate For use with 16in wide Heartland series enclosures Includes (2) mounting flanges and mounting hardware

[MFK6](#)

Internal Shelf		
Part Number	Price	Description
<u>WD105</u>	\$52.00	shelf, weight distribution, 10 x 5in, aluminum (2) screws and (2) slot nuts included
<u>WD106</u>	\$58.00	shelf, weight distribution, 10 x 6in, aluminum (2) screws and (2) slot nuts included
<u>WD12</u>	\$61.00	shelf, weight distribution, 12 x 6in, aluminum (2) screws and (2) slot nuts included
<u>WD14</u>	\$83.00	shelf, weight distribution, 14 x 6in, aluminum (2) screws and (2) slot nuts included
<u>WD168</u>	\$91.00	shelf, weight distribution, 16 x 8in, aluminum (2) screws and (2) slot nuts included
<u>WD1610</u>	\$112.00	shelf, weight distribution, 16 x 10in, aluminum (2) screws and (2) slot nuts included
<u>WD24</u>	\$172.00	shelf, weight distribution, 24 x 10in, aluminum (2) screws and (2) slot nuts included

[WD106](#)

Din Rail			
Part Number	Price	Length (in)	For use with
<u>AH6DR</u>	\$6.00	4.9	AHx664xxx AHx864xxx
<u>AH8DR</u>	\$6.75	6.9	AHx864xxx AHx884xxx AHx108xxxx
<u>AH10DR</u>	\$9.00	8.9	AHx108xxxx AHxx1010xxxx AHxx1210xxxx
<u>AH12DR</u>	\$11.00	10.8	AHxx1210xxxx AHxx1412xxxx
<u>AH14DR</u>	\$12.75	12.8	AHxx1412xxxx AHxx1614xxxx
<u>AH16DR</u>	\$15.00	14.7	AHxx1614xxxx AHxx1816xxxx AHxx2016xxxx
<u>AH18DR</u>	\$16.50	16.7	AHxx1816xxxx
<u>AH20DR</u>	\$19.25	18.6	AHxx2016xxx
<u>AH24DR</u>	\$22.50	22.5	AHxx2424xxxx

[AH8DR](#)