

AUTOMATIONDIRECT.com

# C-more<sup>®</sup> Operator Interface

Order Online at AutomationDirect.com  
**BUY**  
ONLINE  
Available in the U.S. and Canada only

Fast Shipping of In-stock Products

45-day Money-Back Guarantee  
**45**  
day

FREE Technical Support  
**Located in USA**

Up-to-date price list:  
[www.automationdirect.com/pricelist](http://www.automationdirect.com/pricelist)

FREE Technical Support:  
[www.automationdirect.com/support](http://www.automationdirect.com/support)

FREE Videos:  
[www.automationdirect.com/videos](http://www.automationdirect.com/videos)

FREE Documentation:  
[www.automationdirect.com/documentation](http://www.automationdirect.com/documentation)

FREE CAD drawings:  
[www.automationdirect.com/cad](http://www.automationdirect.com/cad)



ftp.





# C-more Operator Touch Panels

Starting at just \$688.00, *C-more* Touch Panels are designed to give you one of the best costs of ownership, considering initial price, features, ease of use, reliability and free award winning technical support.

We continue to improve hardware and software features. Perhaps this is why more and more people find that *C-more* has what it takes to meet most of their HMI application needs. But don't take our word for it, see for yourself. Visit our Web site ([www.automationdirect.com](http://www.automationdirect.com)) and read all of the reviews that current *C-more* customers have submitted.

**"I have used the C-More touch panels for years. They are reliable and fairly "bullet proof". I have utilized 6", 8", 10", 12" and 15" to control cell doors and escape detection systems in a maximum security prison, along with the Direct Logic PLC line and DirectSoft Programming software, with great success. Also you cannot beat the quick shipping, fair pricing and top-notch tech support of all Automation Direct products."**  
Rick - CONCORD, NH



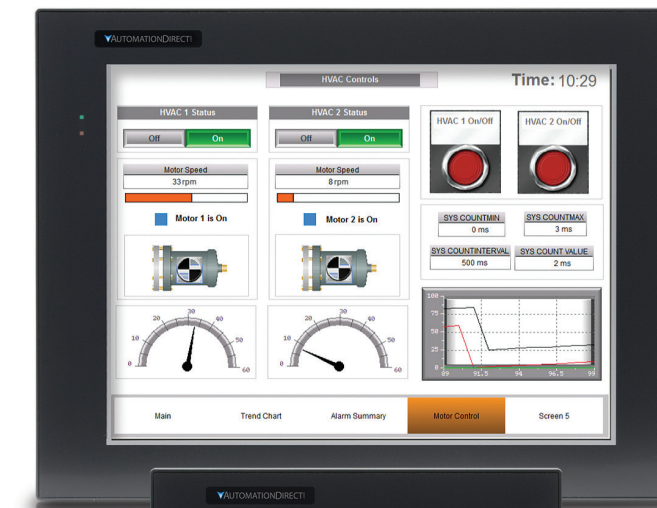
**"This thing is amazing. I started out wanting a screen that was all I hoped for to control a pump application. After I got the unit and the C more software I realized that there was an apple store App. Within 15 minutes of plugging it in and without ever cracking the manual open, I had a switch and an indicator on the screen, my phone, and my web browser and each was able to control my application. Clearly I will need to spend some more time to make it pretty but speed to solution? Amazing!!!!"**  
Stewart - VALPARAISO, IN

**"After using AB PanelViews for several years I started using the 15" EA9. What a great product. Programming is easy, the extra screen space I put to good use and was able to get more pertinent information that will help both the operators and maintenance personnel. This is also 1/3 of the price."**  
Bobby - COLUMBUS, IN

**"Have had to use and understand many different HMI's over the years and the C-more series is by far the most user friendly that I have found. It works naturally well with other AutomationDirect products, but in addition works equally well with other makers' devices."**  
Bob - FENTON, MI

**GET more with C-more**

# Easy to configure, install and maintain



## Hundreds of powerful features

We maximized every feature, small and large, to make sure you have a great experience with your HMI.

- Proven Reliability
- Predefined Objects
- Enhanced Productivity Tools
- Increased Device Connectivity
- Remote Access and Control from any web browser, or with the mobile app\*

C-more has better value all around!

\*C-more Micro HMI panels do not have remote access capability.

## Made by JTEKT

The multibillion dollar JTEKT group of companies primarily provides components to automotive manufacturers such as Toyota. With this type of engineering and manufacturing background, we knew JTEKT could create a product that would offer the best combination of reliability, ease of use, features, and price.

## Backed with a 2-year warranty

For over 50 years, JTEKT has been a world class manufacturer of reliable and best valued products. *C-more* was designed with quality in mind and engineered by JTEKT to meet the most stringent quality requirements. Therefore, JTEKT is confident to offer a 2-year limited warranty on all *C-more* interfaces.



## FREE Software!

C-more HMI design software can be downloaded free-of-charge. Get started on your project today or take it for a test drive.

Download as often as you need.

No license or key needed.

[Click here to download.](#)





more Value for LESS!

Base Model



\$799.00

C-more 6in  
EA9-T6CL-R

C-more EA9 series touch screen HMI, 6in color TFT LCD, 320 x 240, QVGA, supports (1) serial and (2) USB ports and (1) memory card slot.



\$1,003.00

C-more 6in  
EA9-T6CL

C-more EA9 series touch screen HMI, 6in color TFT LCD, 320 x 240, QVGA, supports (3) serial, (1) Ethernet and (2) USB ports, (1) memory card slot and (1) audio line out



\$1,959.00

C-more 15in  
EA9-T15CL-R

C-more EA9 series touch screen HMI, 15in color TFT LCD, 1024 x 768 pixels, XGA, LED backlight, supports (1) serial, (1) Ethernet and (2) USB ports, (2) memory card slots.

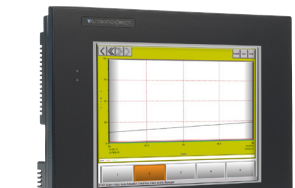


\$1,524.00

C-more 8in  
EA9-T8CL

C-more EA9 series touch screen HMI, 8in color TFT LCD, 800 x 600, SVGA, supports (3) serial, (1) Ethernet and (2) USB ports, (1) memory card slot and (1) audio line out.

More Full Feature Models



\$1,718.00

C-more 10in  
EA9-T10CL

C-more EA9 series touch screen HMI, 10in color TFT LCD, 800 x 600, SVGA, supports (3) serial, (1) Ethernet and (2) USB ports, (1) memory card slot and (1) audio line out.



\$1,096.00

C-more 10in Widescreen  
EA9-T10WCL

C-more EA9 series touch screen HMI, 10in color TFT LCD, wide-screen, 1024 x 600, WSVGA, supports (3) serial, (1) Ethernet and (2) USB ports, (1) memory card slot and (1) audio line out.

Enhanced Feature Models



\$1,479.00

C-more 12in  
EA9-T12CL

C-more EA9 series touch screen HMI, 12in color TFT LCD, 800 x 600, SVGA, supports (3) serial, (1) Ethernet and (2) USB ports, (2) memory card slots, (1) HDMI video out and (1) audio line out.



\$2,684.00

C-more 15in  
EA9-T15CL

C-more EA9 series touch screen HMI, 15in color TFT LCD, 1024 x 768, XGA, supports (3) serial, (1) Ethernet and (2) USB ports, (2) memory card slots, (1) HDMI video out and (1) audio line out.

\$632.00



Need a bigger screen or none at all? check out the C-more headless HMI, details at the end of this section

C-more Touch Panel Quick Look

Touch Panel Hardware Selection

Part Number	Ethernet	SD Card Slot	Serial Ports	HDMI Video Output	Audio Output	USB Ports	EA-ECOM Support
EA9-T6CL-R		1 Slot	1 Port			USB 2.0 Type A and B	
EA9-T6CL	Yes	1 Slot	3 Ports		Yes		Yes
EA9-T8CL	Yes	1 Slot	3 Ports		Yes		Yes
EA9-T10CL	Yes	1 Slot	3 Ports		Yes		Yes
EA9-T10WCL	Yes	1 Slot	3 Ports		Yes		Yes
EA9-T12CL	Yes	2 Slots	3 Ports	Yes	Yes		Yes
EA9-T15CL	Yes	2 Slots	3 Ports	Yes	Yes		Yes
EA9-T15CL-R	Yes	2 Slots	1 Port				

Hardware Features

- 64K colors and LED backlights
- 800MHz CPU
- 26MB to 82MB project memory depending on model
- 12 to 24 VDC powered (Optional AC module available)
- Built in Real-time Clock with 30 day backup (No Battery required)
- NEMA 4/4X IP65
- USB 2.0 Type A for USB HID compliant devices / Storage memory devices
- USB 2.0 Type B port for Programming

FREE Software Features

- Over 50 objects including 16 pen trends, switches, PID trend faceplate, PID bar graph
- Event Manager allows for Logging and Notifications
- Language support for objects in German, French, Italian, Spanish, Chinese and Japanese Characters
- Project simulator
- Bitmap animation
- E-mail messaging
- Built-in FTP server / Web server
- Popup windows
- Data logging to USB/SD Flash Drive
- USB 2.0 Type B port for Programming
- Historical alarms with time and date stamp along with alarm frequency reporting
- Supports simultaneous communication to multiple brands of PLC/PACs

- Mouse and Keyboard support within the Project
- Remote HMI feature with smart phone / tablet / PC
- 2 year Warranty and a 30-Day Money Back Policy

Please refer to the catalog technical section for details.

Support Features

- Free Top Rated Technical Phone Support
- 2 year Warranty and a 30-Day Money Back Policy

Please refer to the catalog technical section for details.

Supported drivers

AutomationDirect PLCs

Do-more PLCs

K-Sequence (DirectLOGIC PLCs)

DirectNET (DirectLOGIC PLCs)

Modbus (Productivity Series controllers, DirectLOGIC PLCs, CLICK PLCs)

ECOM Ethernet (DirectLOGIC PLCs)

Think & Do (Modbus RTU and Modbus TCP/IP)

GS Drives

SOLO Temperature Controllers

Modbus RTU

Modbus TCP/IP

Allen-Bradley

A-B DF1

A-B DH485

A-B EtherNet/IP Client

A-B Ethernet/IP Server Generic IO Messaging

GE

90/30, 90/70, Micro 90, VersaMax Micro (SNPX)

90/30, Rx3i (SRTP Ethernet)

Omron

Omron Host Link Adapter

Omron FINS (Serial and Ethernet)

Mitsubishi

FX Series CPU

FX-1N(C), 2N(C), 3U(C) CPU

Q Series (QO2,Q02H, Q06H, Q12H, Q25H CPU)

Q/QnA (Serial and Ethernet)

Siemens

S7-200 (Serial: PPI)

S7-200 (Ethernet: ISO over TCP/IP)

S7-300 (Ethernet: ISO over TCP/IP)

S7-400 (Ethernet: ISO over TCP/IP)

S7-1200 (Ethernet: ISO over TCP/IP)

Please refer to the Compatibility Table in the following technical section for detailed information about which protocols are available for use with specific controllers.



# more Connectivity...

## Communicate any way you want

C-more was designed to offer the widest range of connectivity options of any PLC touch panel in its class.

Part Number	Ethernet	SD Card Slot	Serial Ports	HDMI Video Output	Audio Output	USB Ports	EA-ECOM Support
EA9-T6CL-R		1 Slot	1 Port			USB 2.0 Type A and B	
EA9-T6CL	Yes	1 Slot	3 Ports		Yes		Yes
EA9-T8CL	Yes	1 Slot	3 Ports		Yes		Yes
EA9-T10CL	Yes	1 Slot	3 Ports		Yes		Yes
EA9-T10WCL	Yes	1 Slot	3 Ports		Yes		Yes
EA9-T12CL	Yes	2 Slots	3 Ports	Yes	Yes		Yes
EA9-T15CL	Yes	2 Slots	3 Ports	Yes	Yes		Yes
EA9-T15CL-R	Yes	2 Slots	1 Port				



**9 RJ12 RS232 Communications port**

**8 3-pin RS485 Communications port**

**1 Built-in SD Card port**  
Supports SD memory cards; used for data logging or user program transfer/operation ( 6 through 10-inch panels support one SD card, 12 and 15-inch panels support two SD cards)

**7 USB Port-B**  
Simple programming port connection to PC

**4 10/100 Base-T Ethernet Auto MDI/MDI-X**  
Upload/download programs over network, connect to many brands of PLC/PACs (A-B EtherNetIP™, Modbus TCP/IP, DirectLOGIC ECOM, Productivity3000), connect to standard Ethernet switches, etc.

**2 Serial Communication ports**  
RS-232, RS-422/485 port, connects to numerous brands including Allen-Bradley, GE, Omron, Mitsubishi, AutomationDirect and more

**3 Audio Line out\***  
For amplifiers and speakers; allows .wav files to be played when a specified event occurs

**5 USB Port-A**  
Accepts USB devices such as memory sticks, keyboards, barcode scanners, etc.

**6 HDMI Video out on 12 and 15-inch panels**  
Allows for HDMI output to other HDMI display devices. Use HDMI cable to output the active C-more screen to other display devices (12" and 15" enhanced models only).

EA9-T12CL panel shown

\* Available only on full featured units

# more Reliability...

## Smart power supply options allow for improved reliability

C-more can operate with 12 or 24 VDC power supply. This is great for applications that have good clean 12 or 24 VDC power. However, there are many situations where the DC power in a cabinet does not meet required specifications for instrumentation.

C-more offers an optional 100-240 VAC screw-on power adapter (EA-AC) that improves panel reliability. Since it is built specifically for C-more, it offers power fault detection

with sequential shut-down, and will set an error flag that can be configured with a time and date stamp to help troubleshoot a problem.

The power fault detection will attempt to “close” data logging files on SD memory cards to prevent file corruption. If data logging is critical to your applications, the EA-AC power adapter is a must.

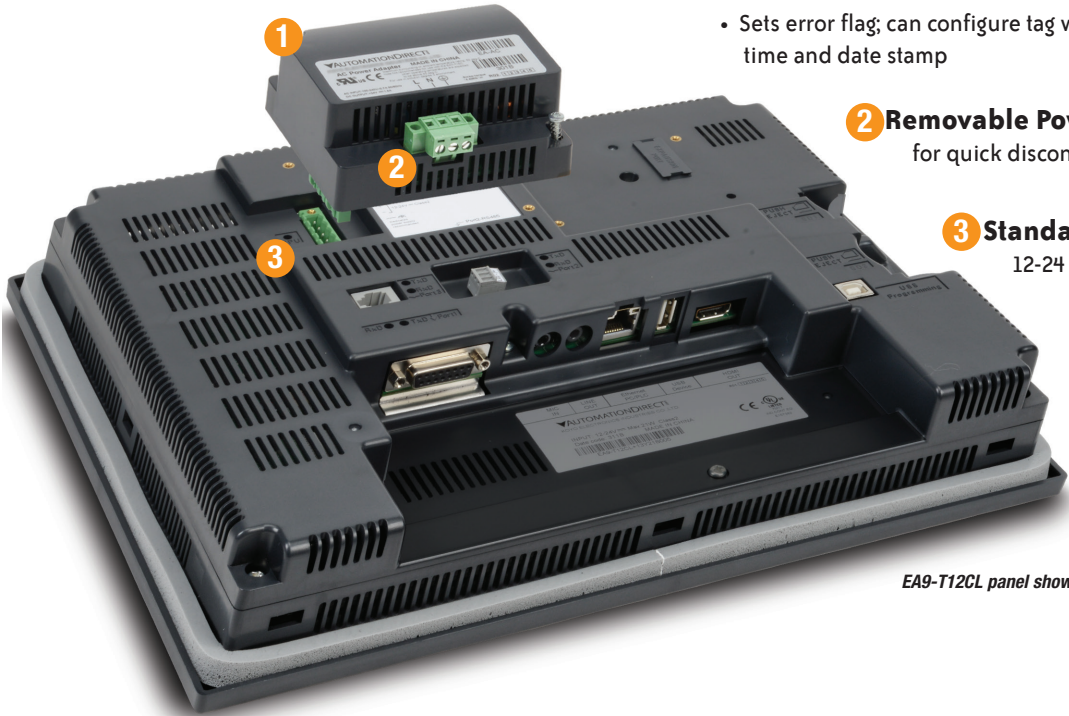
### Power Fault Detection Sequential Shut-down Error Flag you can log

**1 Optional 110 VAC to 24 VDC Power Supply**

- Improves panel reliability
- Power fault protection with sequential shut-down
- Sets error flag; can configure tag with time and date stamp

**2 Removable Power Terminal Block**  
for quick disconnect

**3 Standard Power Connection**  
12-24 VDC 1.5 Amp supply required



EA9-T12CL panel shown

## Add More Ethernet to your panel for only \$105.00 with the EA-ECOM module

The EA-ECOM module easily attaches to EA9 panels (excluding Base models) providing an additional 10/100 Base-T Ethernet Auto MDI/MDI-X RJ45 Port. Simply connect the module to the back of your EA9 C-more and secure it with the supplied screws. The EA-ECOM does not require an external power supply and supports all C-more Ethernet drivers.





# more PLC Compatibility...

## Tag-based Messaging

C-more software supports direct insertion of ControlLogix, CompactLogix and FlexLogix tags from the PLC into C-more - no mapping or translations required.

### Allen-Bradley® PLC Driver Support:

- ControlLogix®
- CompactLogix®
- FlexLogix
- SLC® 5/05 Ethernet™
- MicroLogix™ 1100/1400 Ethernet

including:

- A-B DF1
- A-B DH485
- A-B EtherNet/IP Client
- A-B Ethernet/IP Server Generic IO Messaging

Get A-B Ethernet connectivity and 64K colors starting at **\$1,003.00**

p/n EA9-T6CL: supports serial and Ethernet-based drivers

## Fast and Simple Driver Setup

We have many protocols for the Allen-Bradley PLC brand. The A-B Ethernet drivers allow the simple connectivity of multiple panels and/or multiple Allen-Bradley PLCs. We also have ControlLogix EtherNet/IP Tag Messaging support. This feature helps increase productivity by reducing the time often required

to map your PLC tag database into another device. You can import the RSLogix 5000 L5K file directly, or with just a few clicks of the mouse you can directly enter your ControlLogix/CompactLogix tags from the PLC into C-more. No mapping or translation required!

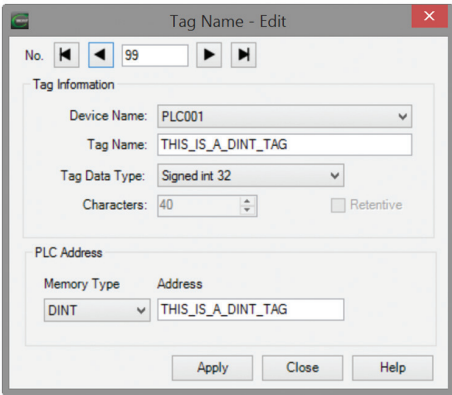
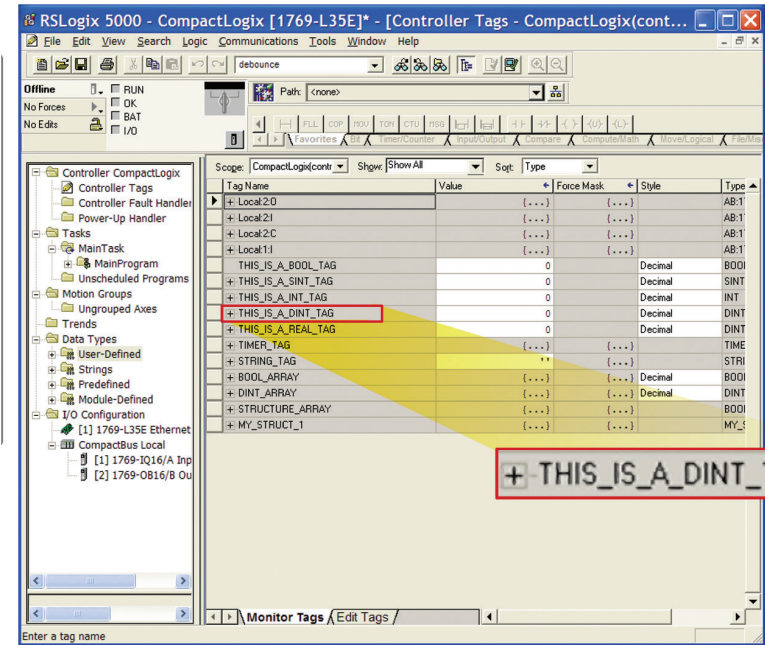
C-more Allen-Bradley Controller Support	DF1 Full Duplex	DF1 Half Duplex	DH485	Generic EtherNet/IP Server (IO Messaging)	EtherNet/IP Client	EtherNet/IP Tag-Based Client	Tag-Based DF1 Full Duplex	Tag-Based DF1 Half Duplex
SLC 5/01, 5/02			Yes					
SLC 5/03	Yes	Yes	Yes		Yes <sup>xxx</sup>			
SLC 5/04	Yes	Yes	**Yes		Yes <sup>xxx</sup>			
SLC 5/05 (Series A 0S501 FRN5 & Higher)	Yes	Yes	**Yes		Yes			
MicroLogix 1000, 1200, 1500	Yes	Yes	**Yes		Yes <sup>xxx</sup>			
MicroLogix 1100/1400	Yes	Yes	**Yes		Yes			
Micro 800						Yes		Yes
PLC5	Yes							
ControlLogix				Yes		Yes	Yes	Yes
CompactLogix				Yes		Yes	Yes	Yes
FlexLogix				Yes		Yes	Yes	Yes

<sup>\*\*</sup>AIC module from Allen-Bradley required for this connection

<sup>xxx</sup>NET - ENI module from Allen-Bradley required for this connection

## ControlLogix EtherNet/IP Tag-based Messaging

Configure ControlLogix, CompactLogix and FlexLogix tags from the PLC into C-more (no mapping or translations required).



2. Type in the PLC tag names directly. You can use the PLC tag names as your C-more tag names or choose a different C-more tag name when appropriate.

You can configure ControlLogix, CompactLogix and Flexlogix tags in the C-more Programming software through two different methods:

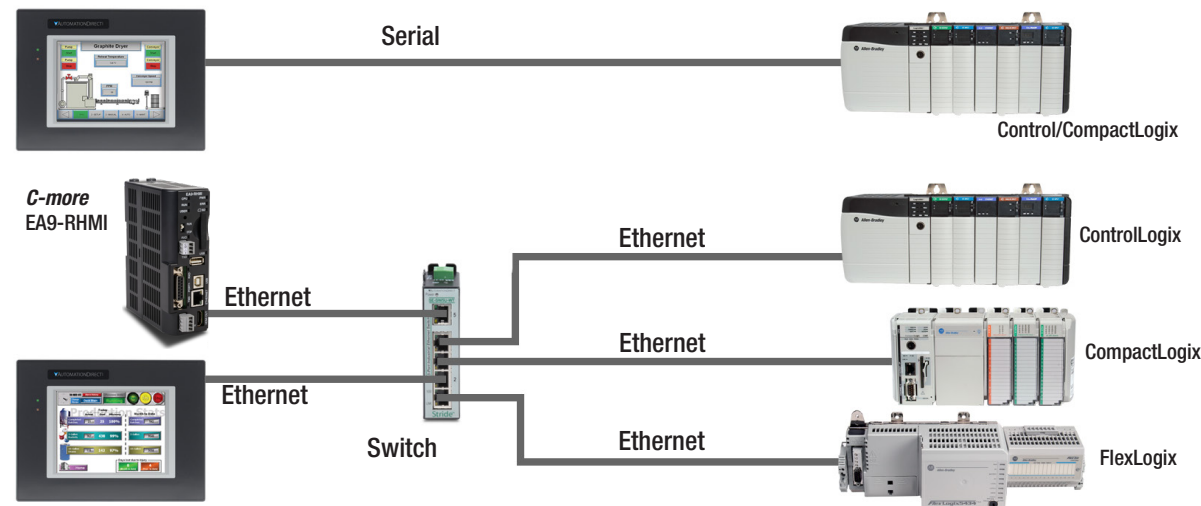
1. Import the tags from RSLogix 5000 (.L5K file).



# ControlLogix, CompactLogix and FlexLogix

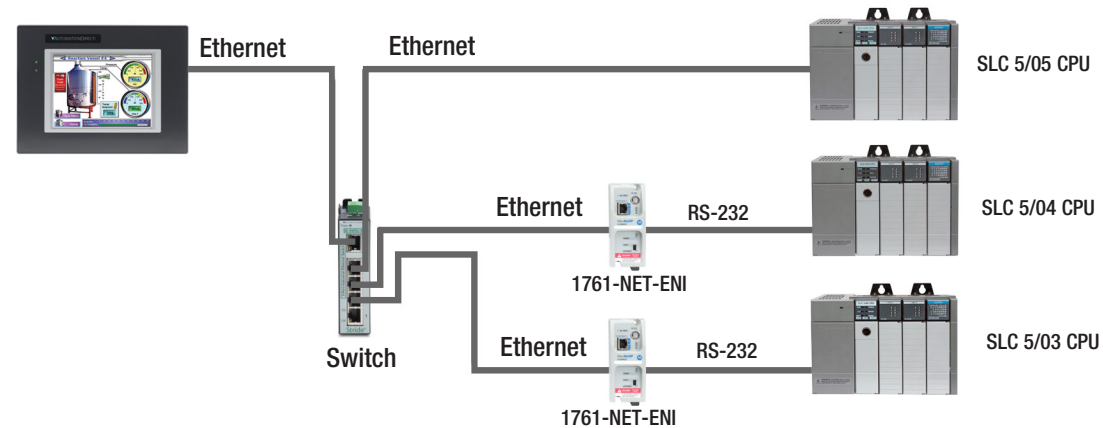
Connect to ControlLogix, CompactLogix and FlexLogix PLCs using either the native serial port or Ethernet port/module. Use direct tag-based messaging or directly enter the

ControlLogix/CompactLogix PLC tags during *C-more* configuration (no mapping or translations required). You can connect multiple *C-more* HMIs to multiple PLC types on one network.



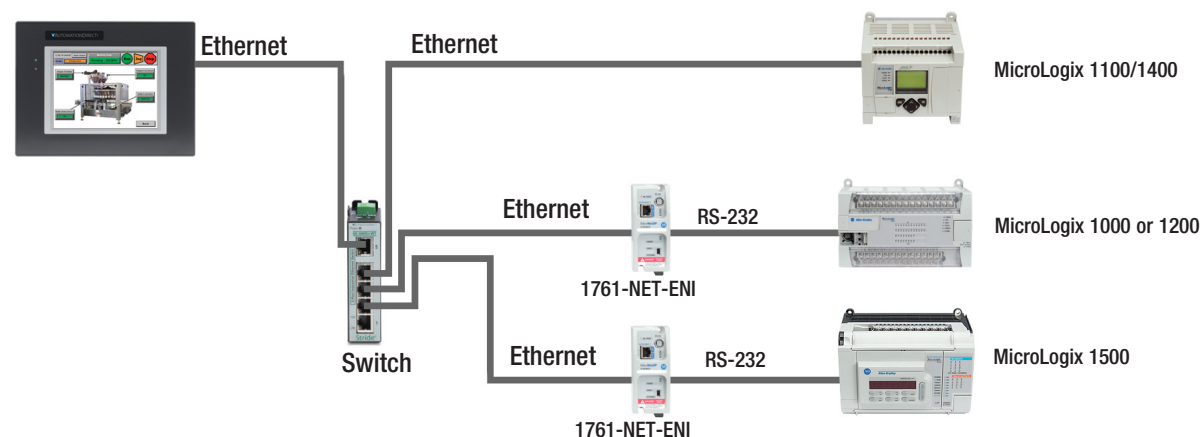
## SLC 500 Ethernet and ENI Driver

Connect to the native Ethernet port on SLC 5/05, and to SLC 5/03 and SLC 5/04 through a 1761-NET-ENI DFI serial-to-Ethernet converter.



## MicroLogix 1100/1400 Ethernet and ENI Driver

Connect to the native Ethernet port on MicroLogix 1100/1400, and to MicroLogix 1000, 1200 and 1500 through a 1761-NET-ENI DFI serial-to-Ethernet converter.

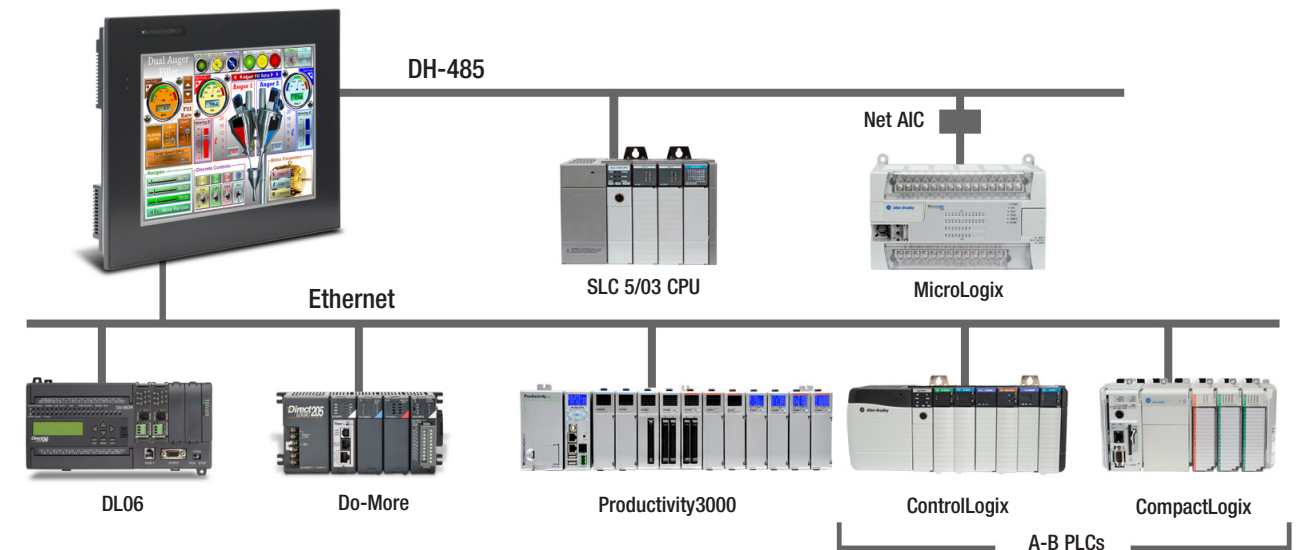


# Simultaneous Communications and Panel Pass-through

## Connect multiple brands of PLC/PACs

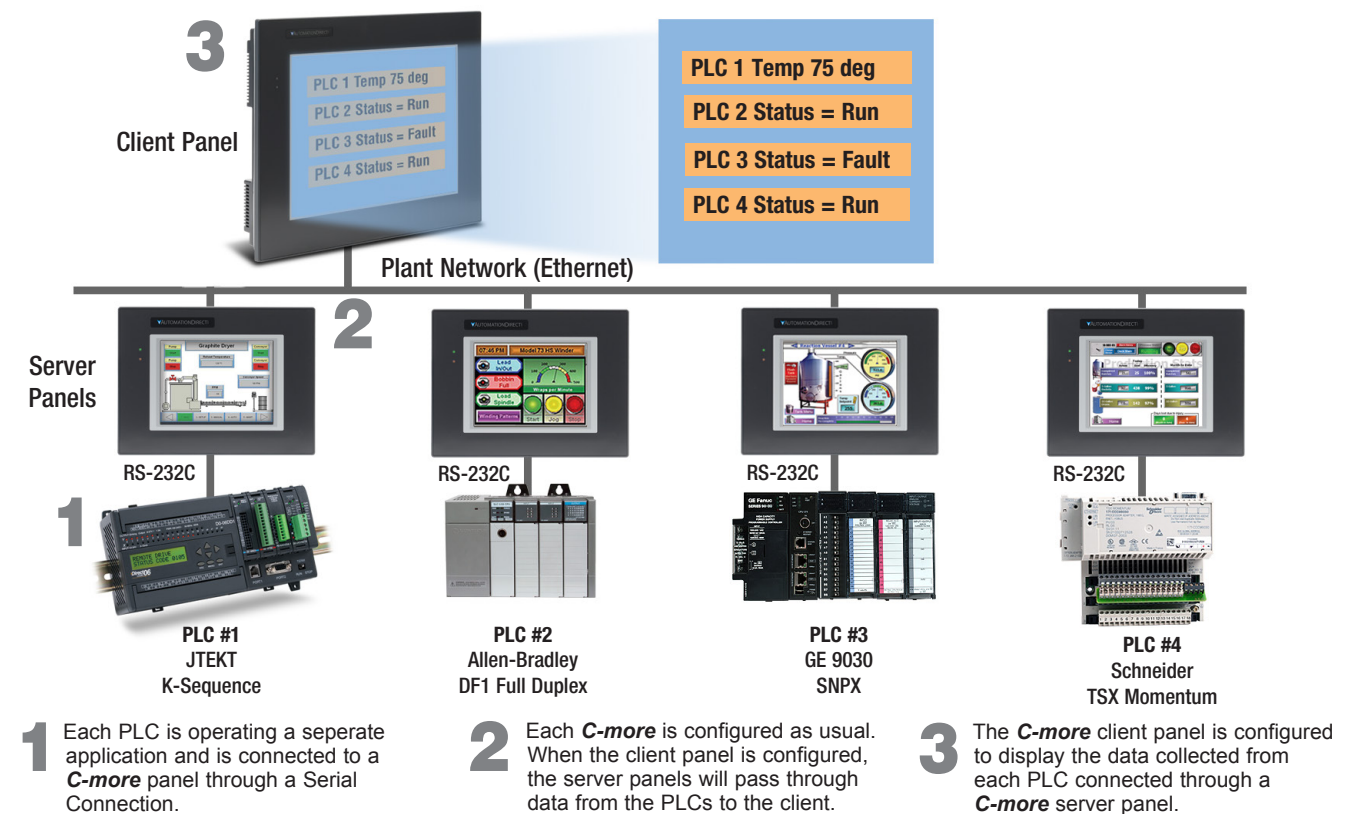
Connect multiple brands of PLC/PACs to *C-more* and communicate with them simultaneously. Use the Event Manager to periodically send tag values from one controller to another or when certain conditions are met.

*C-more* can even act as a "protocol bridge", passing values back and forth between PLC/PACs that use different protocols.



## Panel pass-through

*C-more* panels can access data from supported controllers attached to other *C-more* panels via an Ethernet connection.





# more Programming Power...



## Powerful FREE configuration software with legendary ease of use

C-more's mission is to make you feel like a touch panel configuration expert. So we put in many tools to make your job go faster and more efficiently. Even simple things, such as object configuration boxes, have improved. We think you'll be able to do more with C-more in even less time!

Save your screens in the Screen Library to use with other projects

Build your own keypads to use with numeric and text entry

Click on the Library tab to view libraries of personally stored objects, screens, sound bites, etc. This saves hours of work!

Thumbnail project preview window helps you organize multiscreen projects. And you can rearrange the screens with a drag & drop of your mouse

Property List, show and modify images

Scrolling object selection window lets you find the object you want fast. Just drag and drop it on the screen.

Scrolling parts list shows variations of the objects selected above. Just drag and drop on the screen.

Lock/Unlock Object- This editing tool disables edits to objects that are locked. Once Locked, the object will remain locked and saved within the software. Reduces edit mistakes to objects when multiple users may be accessing or editing a project.

Object Layer List Window shows all the objects on the active screen. Quickly select an object from the list to edit or highlight the Object.

Layer	Object Type	Object Name	Width	Height	Top	Left
1	BarMeter	BarMeter1	140	120	370	20
2	DigitalClock	DigitalClock1	290	40	10	490
3	Group	Group1	140	300	60	20
3-1	NumericDisplay	NumericDisplay1	120	50	290	30
3-2	PushButton	Pushbutton3	120	50	220	30
3-3	PushButton	Pushbutton2	120	50	150	30
3-4	PushButton	Pushbutton1	120	50	80	30
3-5	Frame	Frame1	140	300	60	20
4	ScreenSelector	ScreenSelector1	780	80	510	10
5	Slider	Slider1	570	90	250	190
6	LineTrendGraph	LineTrendGraph1	560	120	370	200

Hide/Unhide Object feature- This editing tool allows hiding objects that may interfere with editing other objects on the screen, such as Pop-up window objects.

Grouping Control: expand or collapse Grouped objects. Access individual objects in a group without having to separate the group or move objects on the screen.

Hardware manuals and help files are a few clicks away. Need more? Follow the links to C-more's online library of objects and sound bites, or visit C-more's online forum.

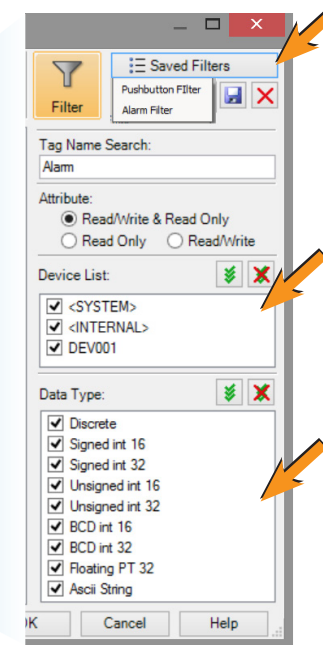
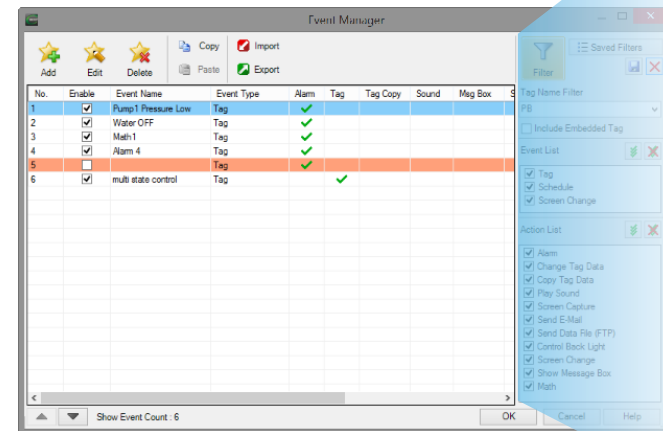
## Powerful Database Tools

### Customize your searches

Easily edit C-more's databases with the latest software tools. Create, import, export and search for tags and other datatypes

with a click of a button. Powerful search filters allow for custom search terms based on various options.

- Tagname Database
- Message Database
- Event Manager Database
- Address Book



Customize and save your own search terms for those most used items.

Device type filters allow you to reduce the view to just the device tags you want to find or edit.

Data type filters allow you to reduce the view to just the specific tag data types you want to find or edit.

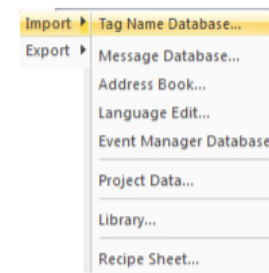
### Database Import & Export saves you time

The Import and Export tools allow you to quickly exchange database files between C-more projects, or PLC tagname files. With just a few clicks of the mouse, you can create a .csv or

xls file. This greatly reduces the time needed to create a new database, especially when there are hundreds, or thousands of data points to work with.

### Import or Export

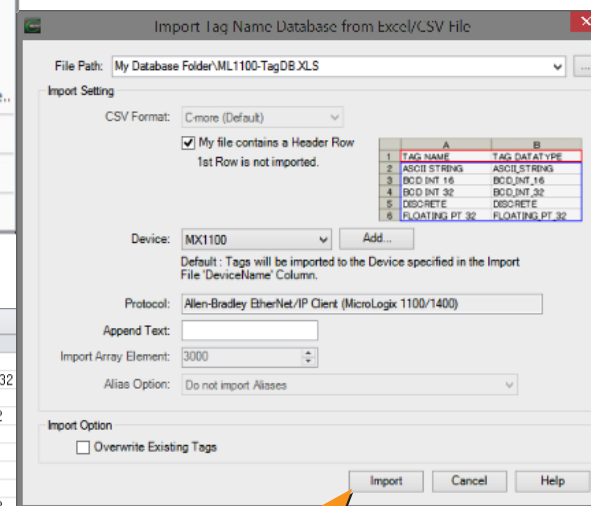
- Tagnames
- Messages
- E-mail Addresses
- Languages
- Events
- Project File
- Screen Library
- Graphics Library
- Object Library
- Sound Library
- Recipe Sheets



### Importing PLC tags is easy

With supported PLC databases, simply export the PLC tagnames and use the C-more import tool to select the .csv or xls file.

ProtocolID	DeviceName	TagName	DataType
409	MX1100	AXIS_0_POSITION	Floating_PT_32
409	MX1101	CONSOLE_PB_LAMP	Discrete
409	MX1102	COUNTERS[0].ACC	Signed_int_32
409	MX1103	COUNTERS[0].CD	Discrete
409	MX1104	COUNTERS[0].CU	Discrete
409	MX1105	COUNTERS[0].DN	Discrete
409	MX1106	COUNTERS[0].OV	Discrete
409	MX1107	COUNTERS[0].PRE	Signed_int_32
409	MX1108	COUNTERS[0].UN	Discrete
409	MX1109	COUNTERS[1].ACC	Signed_int_32
409	MX1110	COUNTERS[1].CD	Discrete
409	MX1111	COUNTERS[1].CU	Discrete





# Productivity Tools: Built-in Simulator

## Built-in project simulator pays for the HMI in time savings!

The “one click” built-in simulator is one of **C-more**’s most powerful features. You will find yourself using this feature every couple of minutes while developing your project. Using this intuitive simulator will result in a better looking and more effective project completed in less time.

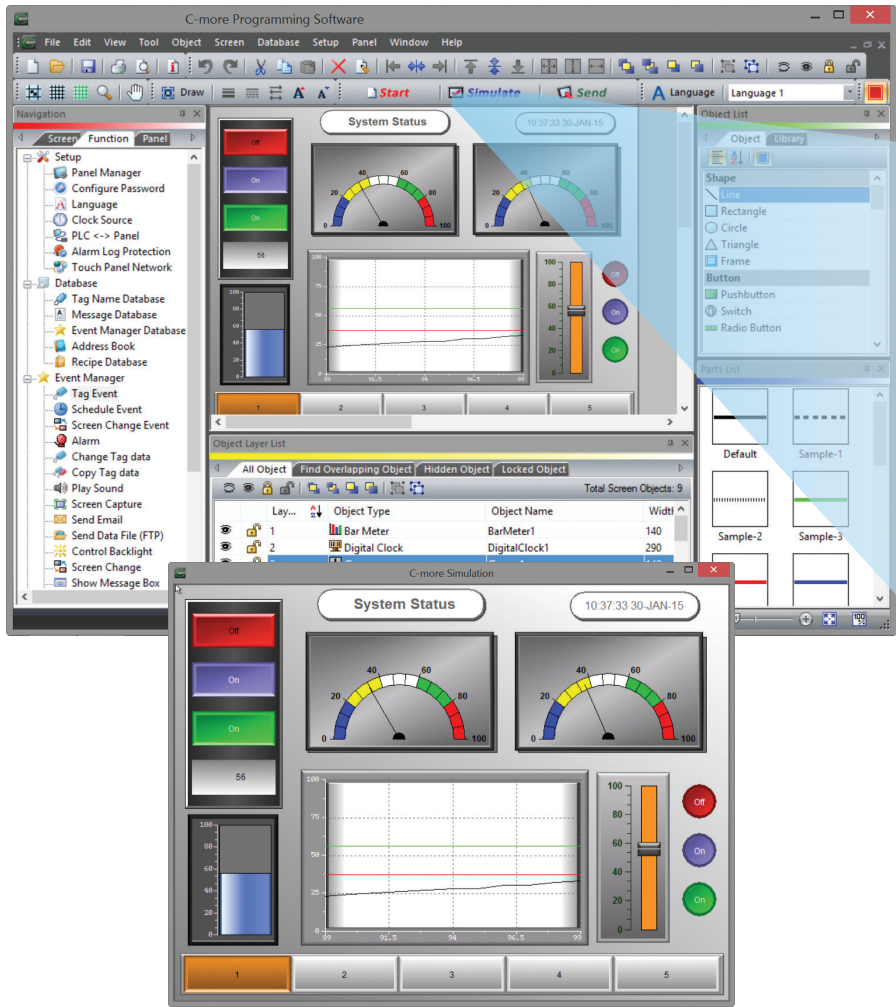
The simulator allows you to fully simulate your entire project (every object, every screen) while it is being developed, without being connected to a PLC/PAC. Simply click on the “Simulate Project” button at any stage of project development. A window will appear over your development screen that contains a pixel-for-pixel representation of how your project will appear on your physical screen. A simulation control window will also appear.

Now the fun begins. Simply click your mouse on any simulated screen object and it will behave as if your finger is actually touching the screen. For example, clicking on a pushbutton object will activate and deactivate it as if an operator were touching it! The same will be true for thumbwheels, slider switches (simply

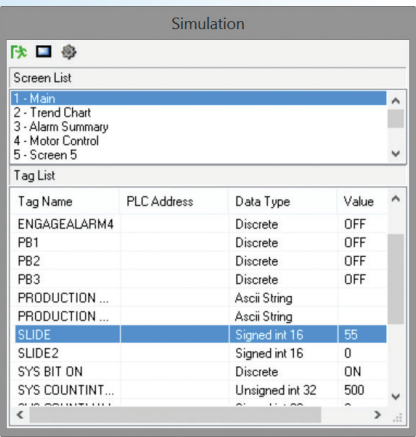
hold your mouse button down and slide), selector switches, toggle switches and so forth. Want to see how an analog meter moves based on dynamic data from the PLC/PAC? Simply move your mouse to the “Simulation control window” of the simulator, move to the tag and click on the data you wish to change. Now type in the value that you want to simulate, and watch your meter move on the simulated screen.

And here’s the really cool thing - whatever values you modify during simulation, the effect will be propagated throughout your entire project, object by object, screen by screen. That’s because this is a true “project simulator”.

To stop the simulation, just click on your project development screen and you’re back to project configuration. You can go back and forth in a flash. It’s that easy!



The simulation control window shows the list of screens and the tags, with their values, for the highlighted screen in the list.



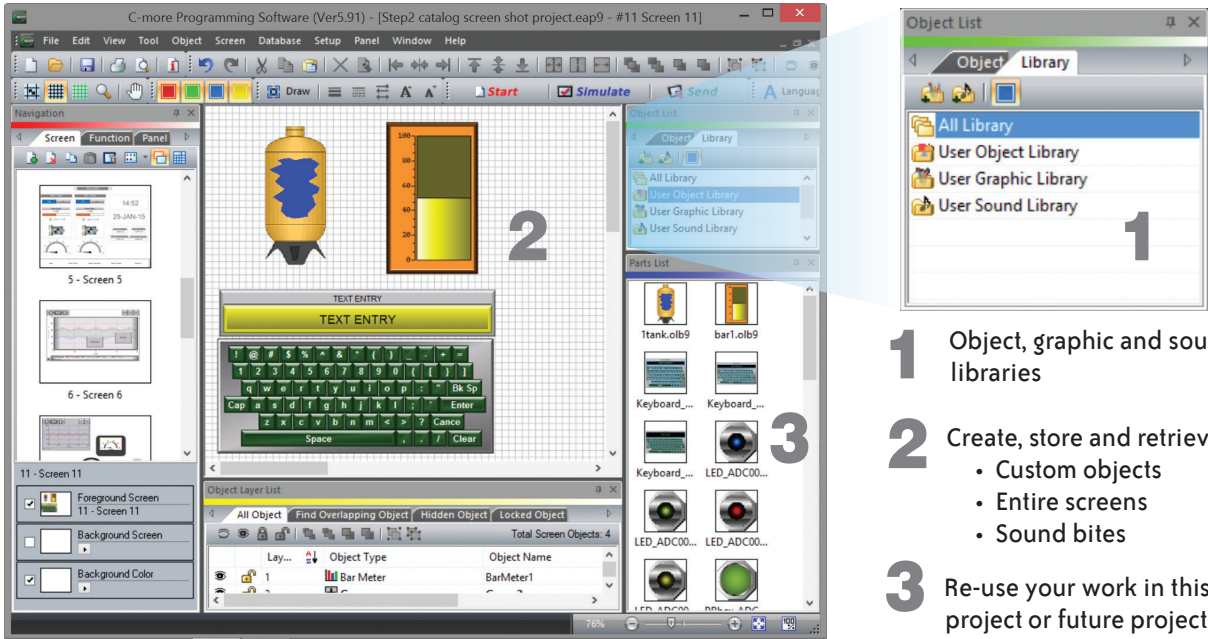
For objects tied to bit or analog data, change actual values here in the tag list, then verify the correct behavior on the screen. You can also change input data on the simulated screen and see the value change in the tag list.

# User Libraries and Project Migration

## User libraries allow you to re-use your work again and again

**C-more** provides three user libraries that allow you to efficiently re-use your work throughout your project or for other projects in the future. You can store a custom object, such as your company logo or a group of objects that compose a custom object (see the tank with cut-away and bar

graph below). You can also store entire screens, graphics and sound bites. You can access your libraries at any time and re-use your work by merely clicking on the saved item and dragging it from the library into your project. You can even import and export library items to share with other designers.



- 1 Object, graphic and sound libraries
- 2 Create, store and retrieve your:
  - Custom objects
  - Entire screens
  - Sound bites
- 3 Re-use your work in this project or future projects

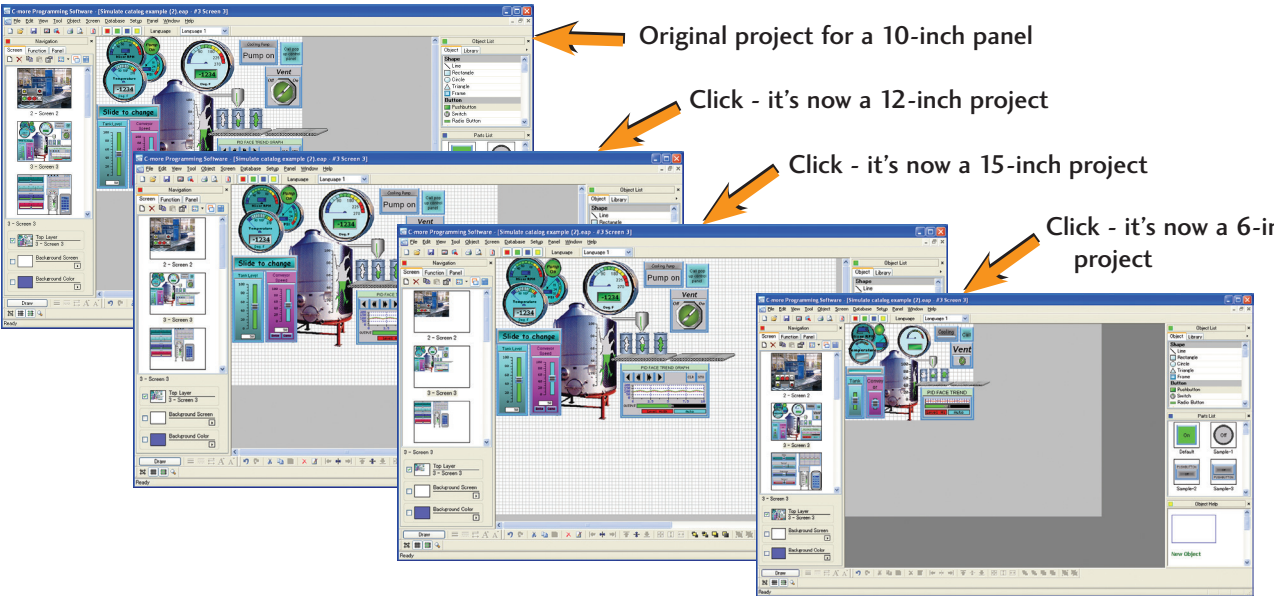
Check out our online library at: [c-more.automationdirect.com/support\\_tools/library.html](http://c-more.automationdirect.com/support_tools/library.html)

## Change your project screen size with a click of your mouse

Imagine developing your project for a 10-inch panel and then deciding to change the size to a 15-inch panel or an 8-inch panel. In the past, you most likely had to recreate your entire project and reconfigure every object, tag and screen.

With **C-more**, your project can be automatically converted for

a different size display with a click of the mouse. Of course, you may wish to move things around a little since you have a different screen size. This feature is great for OEMs or integrators that may be installing different configurations of the same machine or process.

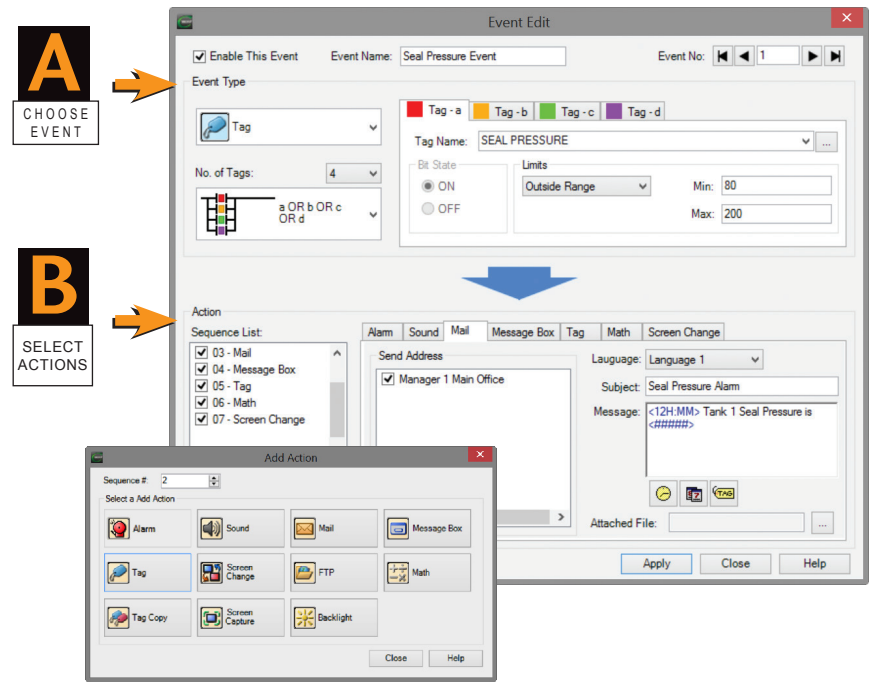




# Powerful Event Manager Triggers Alarms and Actions

## Fill-in-the-blank Event Manager saves time, PLC/PAC programming and memory

C-more provides a powerful yet easy-to-use Event Manager which takes exception handling (including alarms) and scheduling to the next level. The simple fill-in-the-blank manager allows events to automatically trigger several actions without the need for hours of PLC/PAC programming.



On the Event Manager screen, create an event, enter the required data, and select multiple actions. It's that easy!

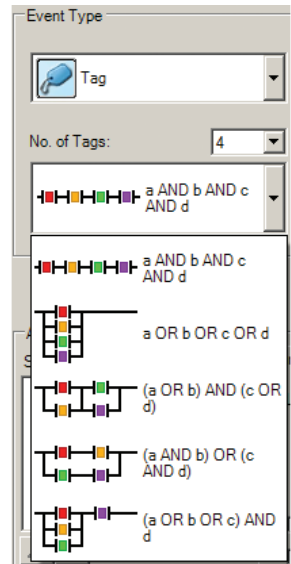
The Event Manager goes beyond simple Alarm and Message functions, and allows C-more to take action based on events such as:

- Tag status or value
- A combination of tag status or values
- Date or time
- A screen change

The Possible Actions include:

- Create an alarm
- Play a sound
- Write values to tags
- Copy tag values
- Send e-mails (with embedded tag data!)
- Force screen changes
- Capture screen image
- Pop-up messages (with embedded tag data!)
- Send files via FTP
- Carry out math formulas

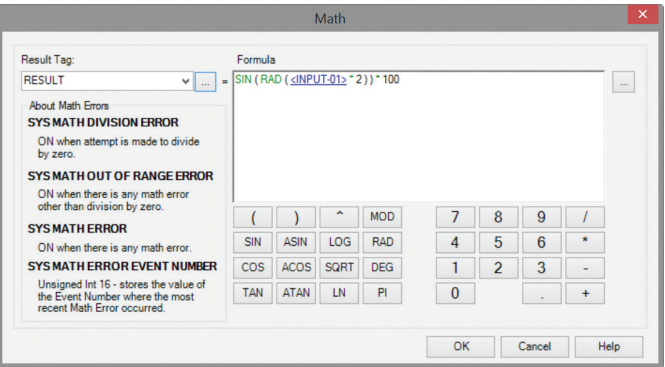
## Tag Combinations allow for simple logic with multiple events



Combine up to four different tags into simple logic events that will trigger actions.

## Math Actions add more power to your project

Create a custom formula or use the Math Keypad to create formulas with Constants or even Tag Values. The Result is placed into a User Defined Tag.



1234 + SIN(<TAG> + PI(123) + LOG a

- Numbers in Black
- Tags in Blue
- Calculations and Functions in Green
- Errors in Red

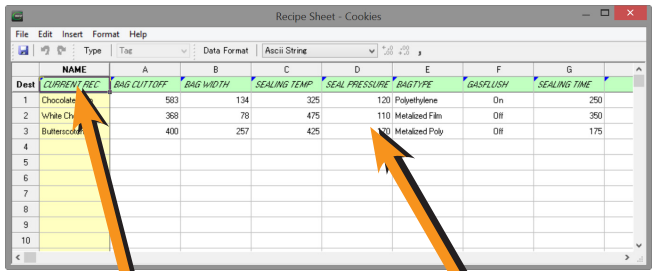
# Convenient Recipe & Alarm Functions

## More flexible recipes reduces programming effort

Recipes make it easy to make large numbers of tag changes with the push of a single button.

C-more provides tremendous flexibility and capacity to applications that require multiple recipes. It has a simple recipe button that supports 99 recipe sheets, each with 1000 recipes of 256 possible #tags or values. C-more recipe values can be modified and saved on the fly by the operator while the machine is running.

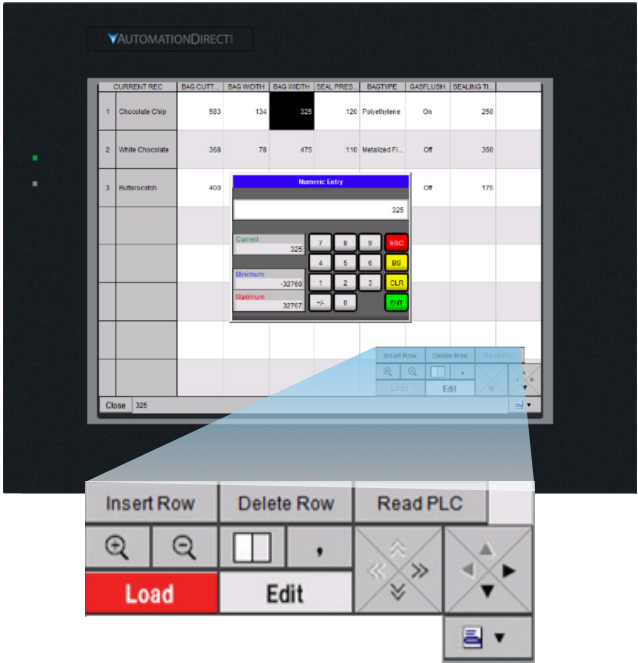
## Spreadsheet-based Recipe Creation



Select tags with one click

Insert constant values or select a tag

- New Recipe Database
- 99 recipe sheets
- 1000 recipes per recipe sheet
- 256 possible tags or values
- Load recipe data directly to PLC registers
- Operator editing of recipes while running



## Alarm List Object offers detailed alarm management for operators

Alarms are used to notify operators of critical situations that may arise during a process. The Alarm List Object allows operator interaction with alarms that have occurred and allows operators to view, confirm or clear the alarms. Alarms can include specific messages with embedded PLC tag data as well as, date and time information for the alarm status. Alarm status can be color coded to help operators quickly interpret the status for each alarm.

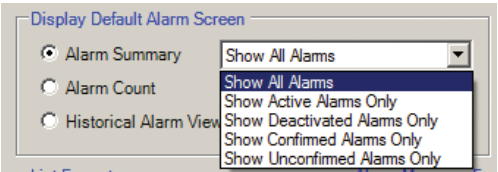
The Alarm List Object allows alarm details to be displayed and logged for future reference

Icons help to see alarm states

Color code the alarm status

Alarm Summary		Total of 4 Alarms			
Message	Confirm	Activated	Confirmed	Deactivated	
Chocolate Chip Low	Required	15/02/28 09:35:53		15/02/28 09:36:00	
Butterscotch Low	Required	15/02/28 09:35:53			
Cookie Monster Alert		15/02/28 09:35:38	15/02/28 09:35:49		
Furnace Overtemp		15/02/28 09:34:43	15/02/28 09:34:57		

The Alarm List Object can be filtered to show alarms based on status.



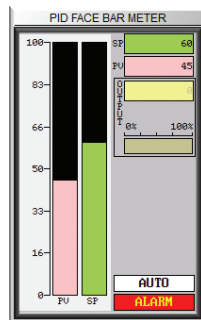
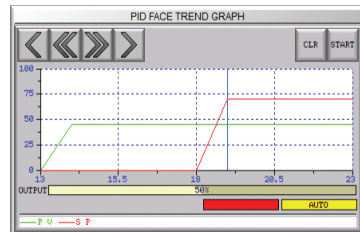
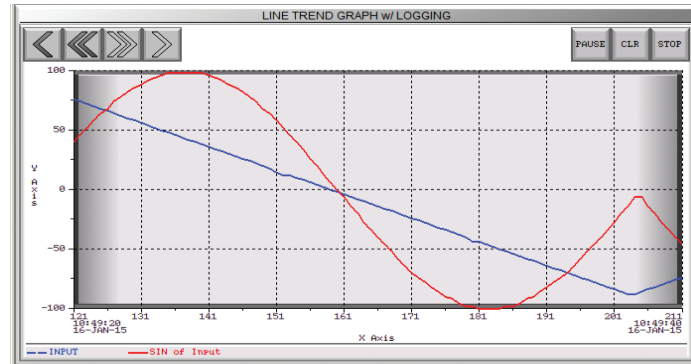


# Trends, Logging and Control Options

## Trend graphs, PID faceplates, true historical data logging

**C-more's** trend graph supports 16 pens, selectable to be hidden or shown by the operator. Show only the trends you wish to see, when you wish to see them. In addition, the full featured **C-more** units support data logging to SD cards or USB memory devices. Gigabytes of trend data can be stored,

limited only by you. The information can also be sent from **C-more** to your PC over the Internet, triggered by an event. **C-more** also has the standard PID faceplate and an enhanced version which shows trend data of the setpoint process variable and control variable.



- 16 pen trends
- PID faceplate
- PID with trend faceplate
- Each pen can be turned on/off
- True historical data logging



Log to SD card/USB



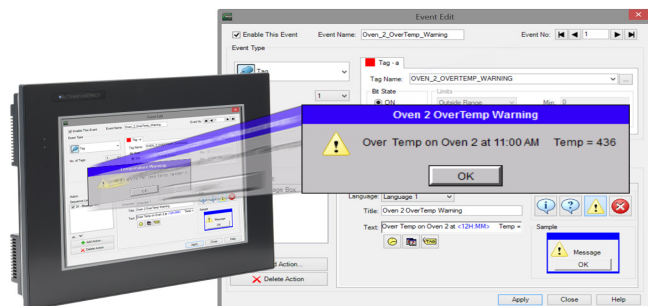
## Pop-up windows for information and control

Use Pop-up Window Frames to overlay information or to provide extra controls on top of other screens. Operators can reposition the pop-up anywhere on the screen or close the pop-up when no longer required. Pop-up windows are created just like the other objects in the project, and can include a portion of any **C-more** screen (except other Pop-ups - no cascading available).



## Pop-up Message Boxes for critical events

Create Pop-up Message Boxes in the Event Manager. You define the trigger criteria, and then select "Message Box" as the "action". You can type in a short message to appear in the box, and select an icon to display with your message. You can even include tag data, and date/time information in the message. The operator must click the OK button in order to clear the message box. You can also log an alarm at the same time the message box is activated via the event manager (along with many other actions).



# Fonts and Animation

## Built-in fonts

**C-more** has 14 different fonts for objects such as pushbuttons, indicators, meters and so on. These fonts are used for object-integrated labels and ON/OFF phrases for each of **C-more's** standard objects. Each font can be bolded, italicized and underlined. Fonts can be scaled to hundreds of sizes, giving you extreme flexibility.



Object Fonts



Bitmap Text Fonts

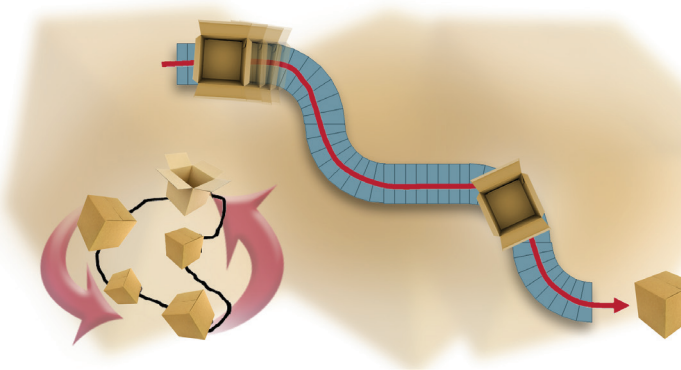
## Built-in animation makes the process come to life

Virtually any bitmap object (from your PC hard drive, the built-in 4,000 symbol library, custom-drawn, etc.) can be animated to follow a straight line or a scribbled path. In addition, the object can change size or orientation (rotation).

Of course, the object can also do any combination of actions as well. Best of all, the animation process is very straightforward. You will be animating your first object in as little as a few minutes!

## 5 types of animation (any combination)

- Straight line... X or Y
- Scribbled path with up to 64 points
- Rotational
- Change size
- Multi-State Bitmap



A bitmap object (picture of cardboard box) follows a curving path along a conveyer (the path can be hidden). The box can rotate around the bends in the path and even change sizes. The bitmap changes toward the end to a closed box shape.

### Axis Animation:

PLC tag values dictate the actual screen position of an object. Move objects along a single axis or use different tags for simultaneous X-Y position control.

### Point Animation:

Define a path with up to 64 points for point-to-point object motion, or use "ratio" mode to move smoothly along a path. Scaling of PLC tag values to the path positions is optional.

### Object Rotation:

Control rotation of an object based on the value of a PLC tag. Also allows scaling of tag values to angular values.

### Object Size:

Control the size of an object based on PLC tag values. Independent X and Y-axis scaling of object size is possible, along with scaling of the tag values.

### Multi-State Bitmap:

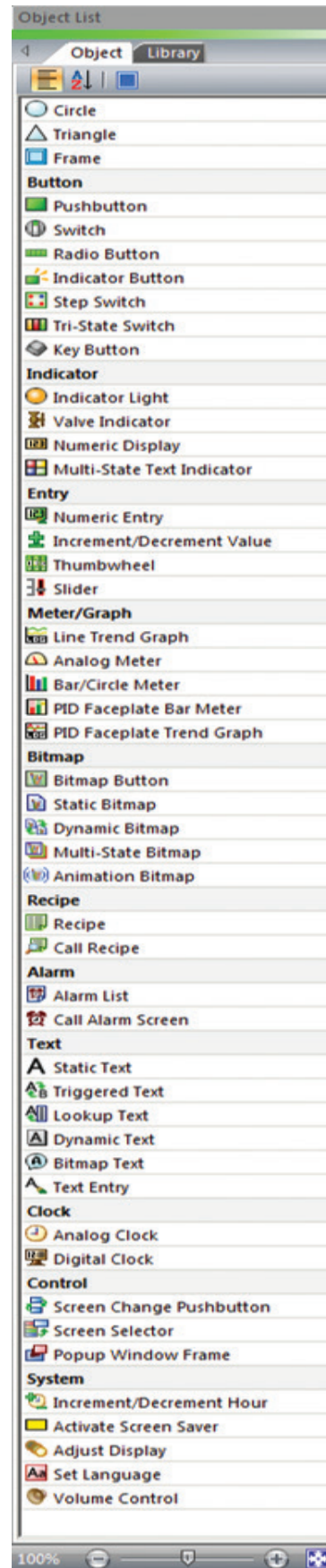
Use up to 16 different bitmap images to animate changes in the appearance of an object.

### Benefit:

Animations of machine motion and factory processes enhance comprehension, and give operators a visual representation of the desired motion of products, and machinery on screen.



# Wide Array of Objects and Customized Parts



Here are just a few of the more than 50 types of objects in the standard Object List

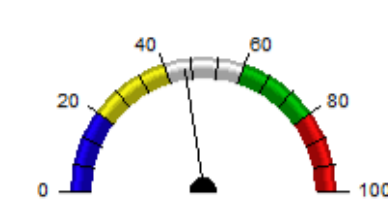
## Pushbuttons



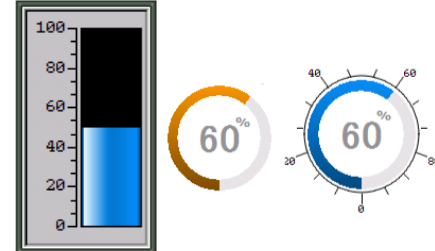
## Indicator Lights



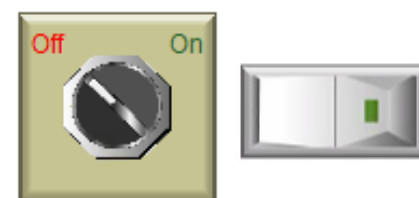
## Analog Meters



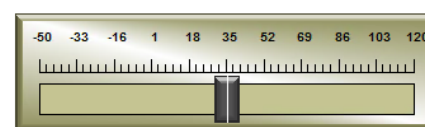
## Bar/Circle Meter



## Switches



## Slider Switch

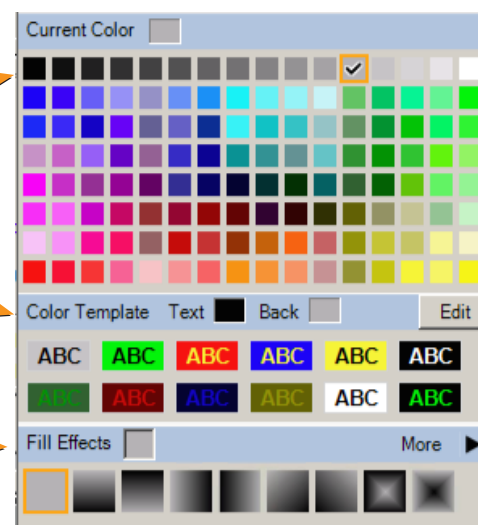


## Personalize your screens

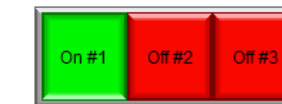
Object Format options make personalizing your screen objects simple. Select the colors, frames, and background effects with just a few clicks of the mouse.

Choose from the default color templates or create and save your own templates to use as often as you like.

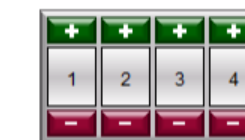
Backgrounds for many objects support gradient fill effects that make them stand out.



## Tri-State Switch



## Thumbwheel



## Dynamic Bitmap



## Set Language

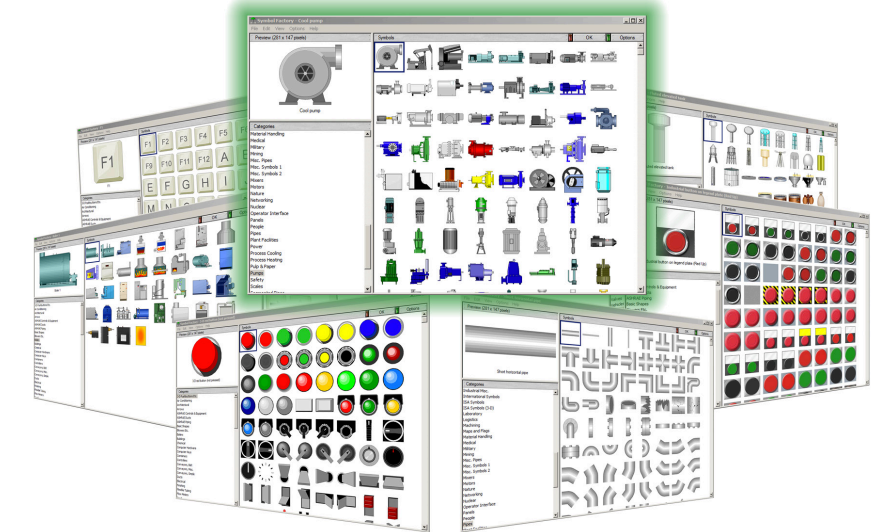


## Bitmap Text

Use any Font on Your PC

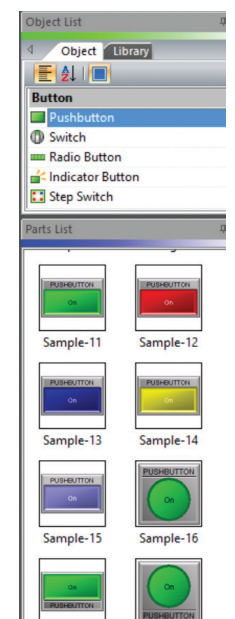
## Over 4000 industrial graphics with Symbol Factory

Select from 80 different categories offering vector graphics that can be scaled up and down in size without loss in image quality. Free Cutaway Control is also included for doing tank type fills. If that is not enough, you can always use your own bitmap graphics with the same objects.



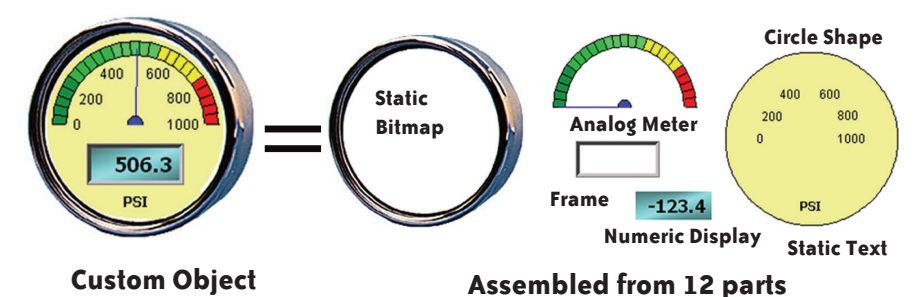
## Hundreds of pre-configured parts

C-more also provides ready-made "parts" (versions of each default object) that are available to drag and drop into your project. Select any object to see preconfigured parts in the Parts List. Select the one that most closely matches your needs - and customize it even further, if you like. Then save it in the user library for future use.



## Create custom objects

Use a combination of C-more objects and parts to create your own objects, or even entire sections of screens.



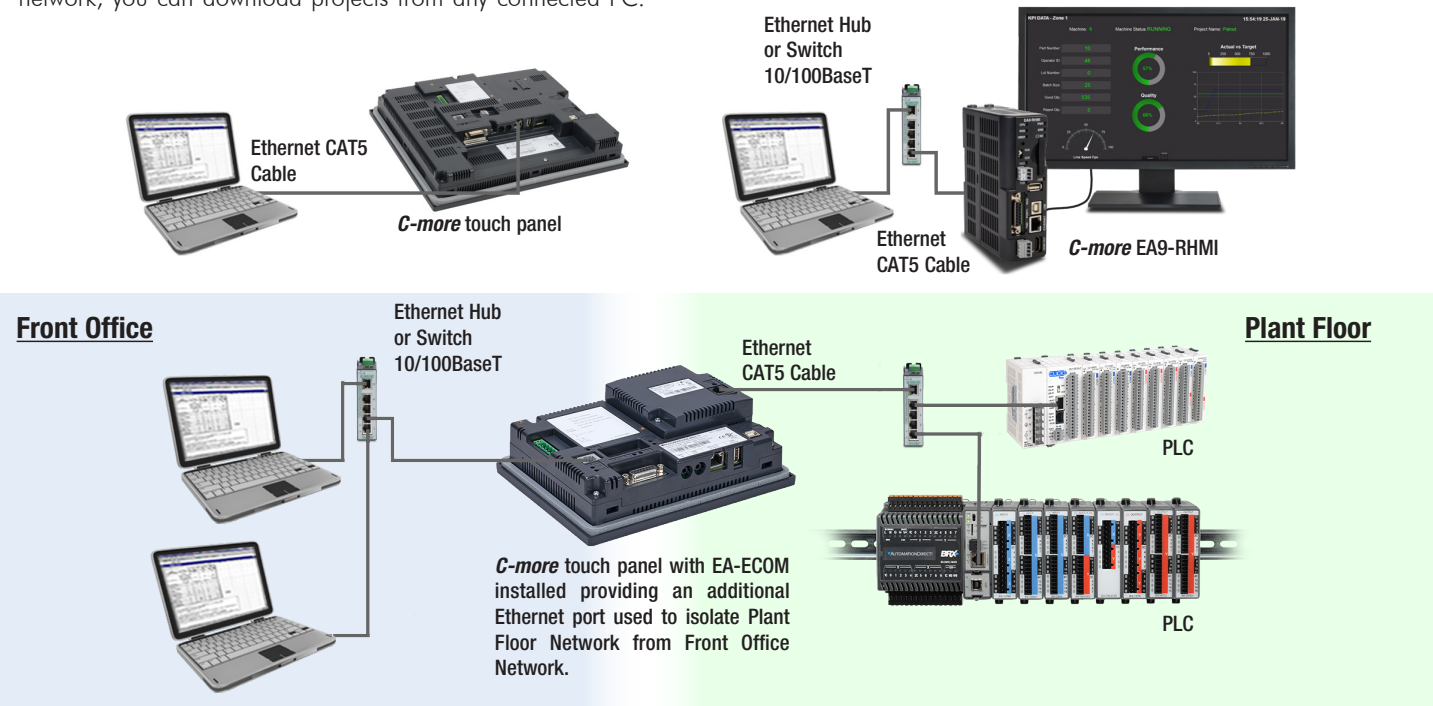


# more Built-in Convenience...

## Network connections

**C-more** HMIs with Ethernet capabilities can be programmed via the built-in Ethernet port (the EA9-T6CL-R model does not support Ethernet). Connect directly from a PC to the **C-more** HMI, or connect one or more **C-more** HMIs to your plant network (via switches and routers). With **C-more** on the plant network, you can download projects from any connected PC.

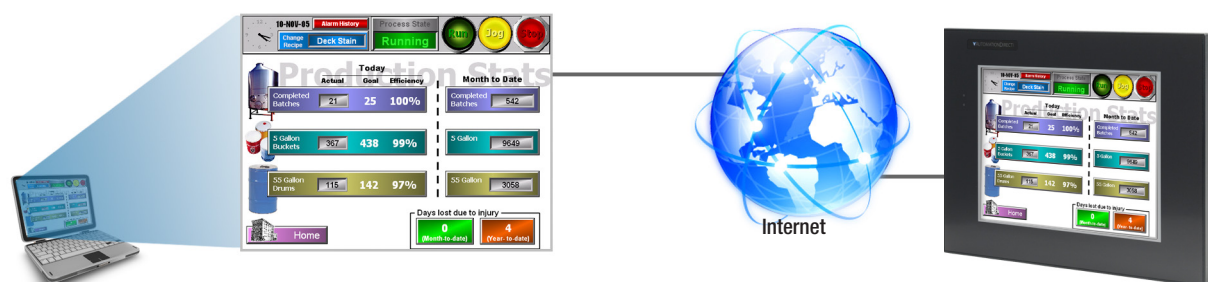
Use the network connection to upload alarm history, PLC/PAC log data or screen captures to a connected PC. **C-more** can send e-mail, based on events or PLC/PAC alarm conditions (if connected to a network and an SMTP (Simple Mail Transport Protocol) server).



## C-more programming software with Internet connection

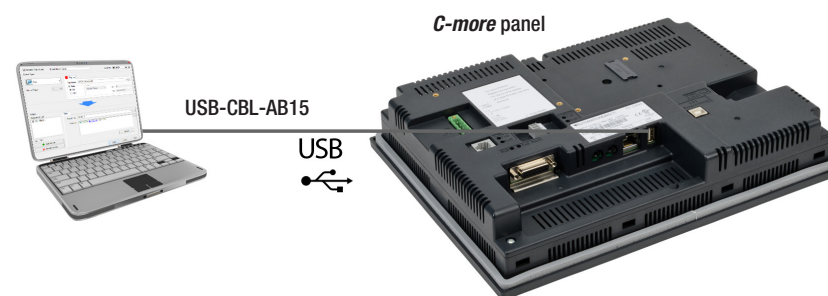
You can program your **C-more** HMI remotely via the Internet. All you need is a Public IP address assigned to the

**C-more** and a network that is accessible from the Internet.



## USB programming

For convenient programming, use a standard USB cable between your **C-more** HMI and your PC. No baud-rate, parity, or stop bit settings to waste your time. USB is fast; most projects download in seconds. Don't pay inflated prices for proprietary programming cables! USB cables are inexpensive (we sell 'em!) and are readily available so you won't waste time looking for a special cable when your million-dollar operation is down.



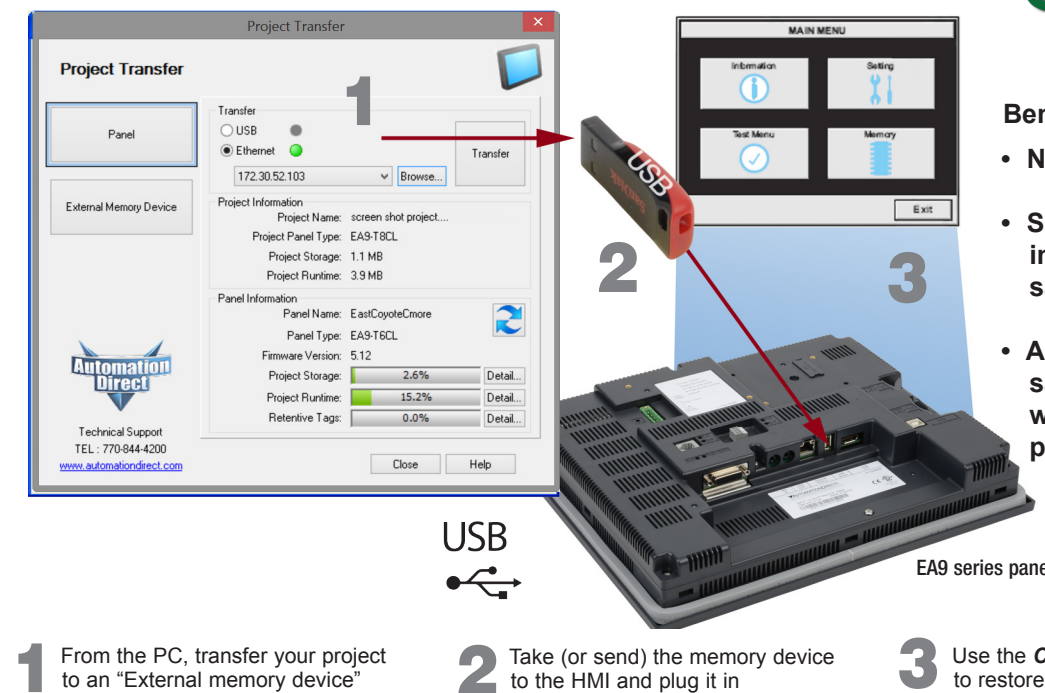
# Updates using USB or SD Memory Devices

## Update your HMI without a PC

Use SD memory cards or a USB flash drive to transfer projects to your HMI without having to connect the HMI to a PC. Perfect for updating remote **C-more** EA9 series interfaces, simply transfer the project to the SD memory card or the Pen Drive, take or send the flash device to the remote location, plug it into the HMI and transfer the project. This is also a convenient

backup of your project, or for when a damaged HMI must be replaced. Send project updates to users who might not even have the programming software. Projects can be transferred onto the flash device, and restored to the HMI.

**C-more**



## Lots of memory for your project

**C-more** EA9 series interfaces start with a minimum of 26 MB of user project space on the 6-inch through 10-inch units, while the headless EA9-RHMI offers 43 MB and the 12-inch and 15-inch units supply 82 MB for project memory.

How about data storage? Many comparably priced touch panels offer no memory options or they support only proprietary memory cards. With **C-more**, all EA9 series models have a USB Port-A connector, and one SD card slot (12 and 15-inch panels include two SD card slots). This allows memory for data logging, screen captures, message logging and alarm logging.





# more Remote HMI Options...

## Touch your HMI from anywhere with Remote Access and Control!

- No additional hardware required.
- The C-more Remote Access feature resides in all HMIs with Ethernet support, and requires no option modules.
- Access real-time data or initiate an action on a control system from anywhere, any time.

### C-more from your PC

With a Web browser on any PC, remote users can operate and monitor a local C-more HMI system from anywhere on the Internet or on a local network.

### C-more from your Mobile Device

Mobile users can download the FREE C-more Remote HMI app from the Apple iTunes store, Google Play, or Amazon App Store, to get remote access and control for Mobile devices.



## Authorized users have the ability to remotely:

- Monitor and control screen operations of the C-more as if touching the screen itself
- Test and troubleshoot the C-more project
- View, zoom, print and save screen captures of active screens

## Convenient yet secure

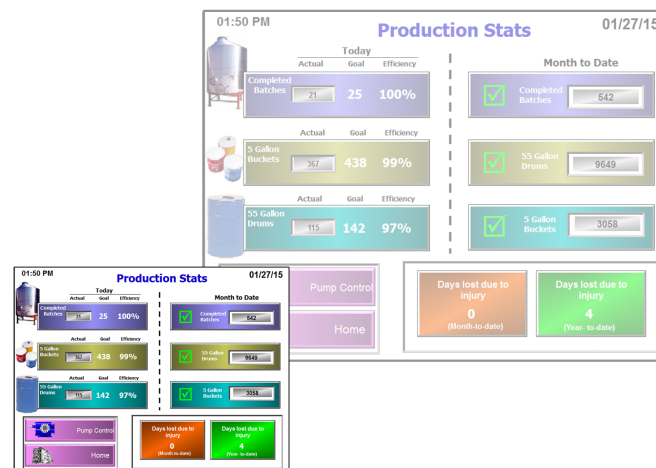
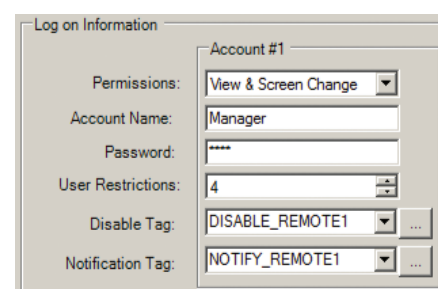
### Multilevel Logon Security

Three Remote Access user accounts can be configured and stored in the project. Each account allows up to five remote users to be connected simultaneously.

### Multilevel Access Control

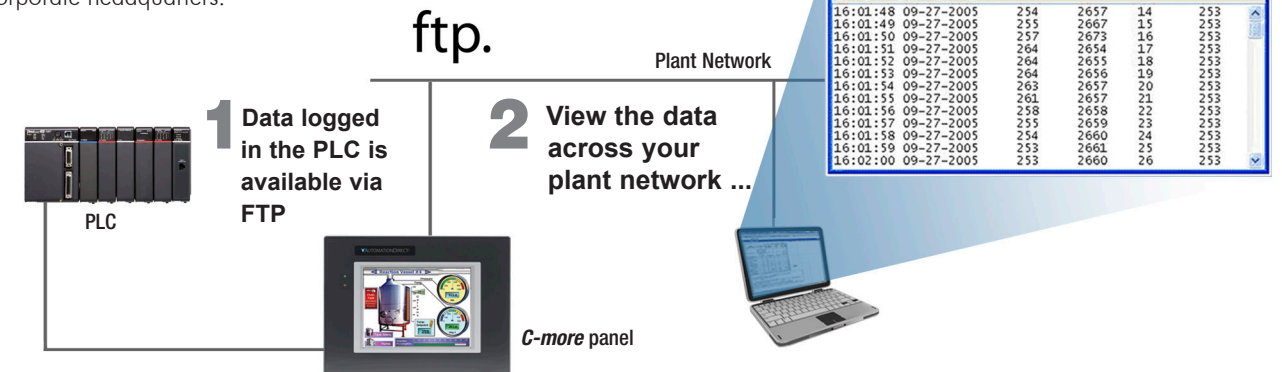
Each account can be configured in one of the following levels of access:

- View Only
- View and allow Screen Change only
- Full Control



## FTP Data Transfer

The FTP server (File Transfer Protocol) allows transfer of data files between C-more and any connected FTP compatible device (usually a PC). Your HMI can collect data and pass it to the PC on your desk, or to your corporate headquarters.

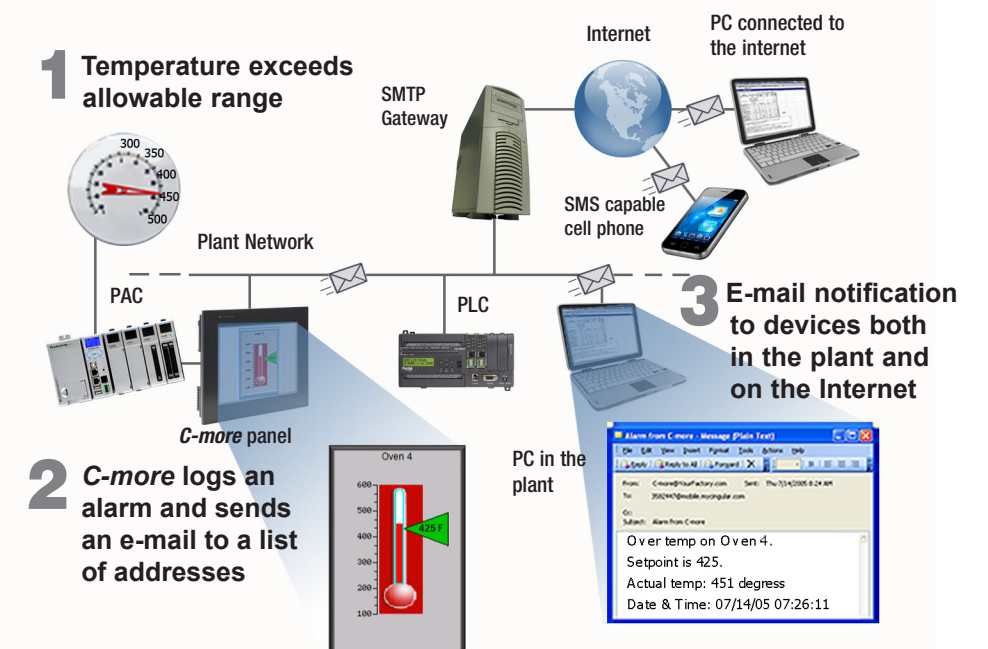


## E-mail

Use the Event Manager to send e-mail periodically or when certain Alarms or Events occur. You can even attach log files to the e-mail message.

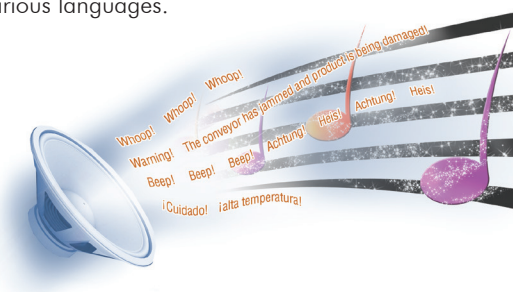
Operators can even key in a message and then press "Send".

C-more supports SSL and Tag based storage of e-mail address so that operators can update e-mail addresses without the programmer's support.



## C-more and hear more!

C-more can play warning sounds and other .wav files via an external amplifier and loudspeakers (user supplied). Use sirens, buzzers or beeping sounds to draw attention to alarm conditions. Even pre-recorded verbal messages can be triggered to speak to your operators in various languages.



## HDMI Video Output

Connect your HDMI TV or monitor to the C-more HDMI video output to display your screens in full HD.

Mouse support allows any HDMI compatible device to function as a machine interface. (HDMI support only on the headless EA9-RHMI, 12-inch and 15-inch enhanced C-more panels).







Use HDMI displays up  
to HD 1280x720  
or no local display at all if  
you prefer to use your PC  
or mobile device.

Expand your Audience!

Only:  
**\$632.00**

## C-more Headless HMI (EA9-RHMI)

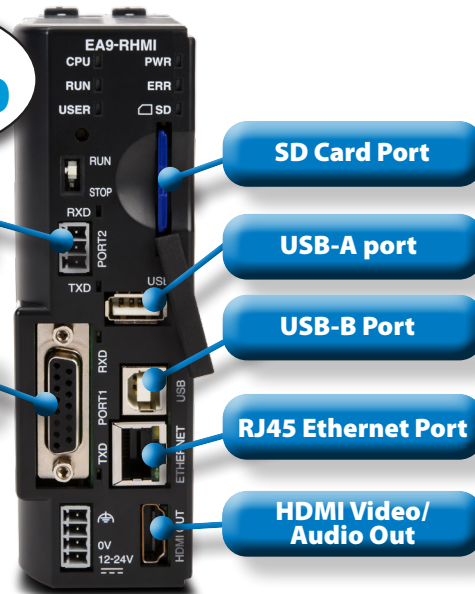
HMI's are no longer confined to the enclosure door! With the C-more EA9-RHMI headless HMI you can display your factory floor data how and where you choose. The EA9-RHMI has all the powerful functionality of the C-more Touch Panel HMI's, without display size restrictions. This HDMI-enabled device works with televisions, monitors, projectors, and most any other HDMI display device of any size to display real-time operational data or messages. The integrated USB ports allows support for industrial touch screen monitors that support USB interface or USB mouse operations.

- All the functionality of a C-more Touch Panel without the display size limitation
- HDMI Video/Audio output with multiple resolutions
  - o VGA 640x480, SD 720x480, XGA 1024x768, HD 1280x720
  - o Audio is also supported via the HDMI connection
- Compatible with ELO and EETI eGalax Single Touch Resistive and eGalax Projected Capacitive Touchscreens
  - o The USB A port allows support for most industrial touch screen monitors in the market
- Multiple connections
  - o Ethernet and RS-232/422/485 serial ports support programming and device connections
  - o USB-B port for programming, monitoring and configuration
  - o USB-A port for USB HID devices such as USB hub, pen drives, touch screen displays, keyboard, mouse and bar-code scanners
  - o SD card slot for log files, project memory or graphic media
- 82MB of user memory

The C-more EA9 software platform is the most user friendly and time-saving software platform that allows for simple visualization of your valuable system data. The alarming, data logging, and email support allow you to collect and share important data to other users and devices. The two serial ports and a 10/100Base-T Ethernet port has support for all the major protocols and enables easy connections to multiple devices simultaneously.

Add an additional Ethernet  
port to your EA9-RHMI for  
only \$105.00 with the  
EA-ECOM module

- Easily attaches to the side of the EA9-RHMI
- 1) 10/100 Base-T Ethernet Auto MDI/MDI-X RJ45 Port
- No external power supply required
- Supports all C-more Ethernet drivers



## Keep Your Personnel Aware of Critical Events No Matter Where They Are

The Event Manager within the C-more programming software goes beyond simple alarm and message functions and allows C-more to act based on random events like changing tag values, or periodic events like day-of-week, time-of-day, or even based on a screen change. The actions can include setting a tag value, copying tag data between tags, changing the screen, capturing a screen, playing a sound file, even sending e-mail (including embedded tag data, screen captures, or PLC log files).

With the EA9-RHMI this critical event data isn't restricted to a display on an enclosure in the factory somewhere, but it can be displayed in the board room, lunch room, or any other location you decide to ensure complete awareness around your facility.

You can also skip the local display entirely by using the remote access feature. Remote access is available from any windows PC (web browser) or on Apple iOS and Android smartphones and tablets when using the C-more Remote HMI mobile app.



**FREE C-more  
Remote HMI App**  
Get remote  
access and  
control on  
the go!  
Available now

Available on the  
**App Store**  
GET IT ON  
**Google play**  
Available at  
**amazon**



**Supports HDMI to a TV  
or monitor to display  
real-time production data and  
machine status**



See your  
factory floor data  
anywhere, anytime!

