

AUTOMATIONDIRECT.com



## Human Machine Interface



Up-to-date price list:  
[www.automationdirect.com/pricelist](http://www.automationdirect.com/pricelist)

FREE Technical Support:  
[www.automationdirect.com/support](http://www.automationdirect.com/support)

FREE Videos:  
[www.automationdirect.com/videos](http://www.automationdirect.com/videos)

FREE Documentation:  
[www.automationdirect.com/documentation](http://www.automationdirect.com/documentation)

FREE CAD drawings:  
[www.automationdirect.com/cad](http://www.automationdirect.com/cad)



ftp.





# The BIG 5 for C-more CM5 Series HMIs

## 1 THE PRICETAG

First and foremost, the CM5 HMI series is extremely affordable. Starting at only \$340.00 for a full featured 4-inch HMI, this series will deliver complete visualization for the smallest systems and the tightest budgets.

starting at  
only:  
**\$340.00**



## 2 THE SELECTION

CM5 HMIs offer a variety of screen sizes, all of which feature a widescreen format. Starting with the very compact 4 inch all the way to the large and robust 22 inch, you'll easily find one that's just right for the job.

Headless HMI also available to utilize external screen sizes larger than 22 inches.



**CM5 4in Widescreen**  
CM5-T4W  
\$340.00



**CM5 7in Widescreen**  
CM5-T7W  
\$479.00



**CM5 10in Widescreen**  
CM5-T10W  
\$769.00



**CM5 12in Widescreen**  
CM5-T12W  
\$1,029.00



**CM5 15in Widescreen**  
CM5-T15W  
\$1,609.00

**CM5 22in Widescreen**  
CM5-T22W  
\$1,999.00

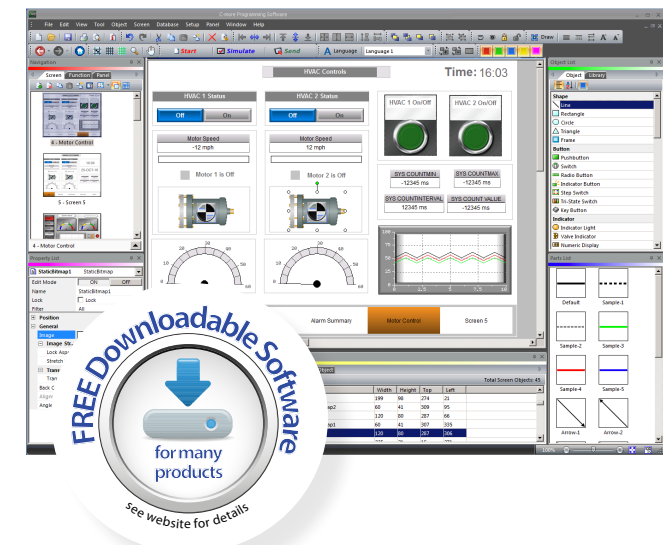


## 3 THE POWER

The CM5 HMI series has the highest performance of all our HMI families. With an amazing 1.6GHz quad core processor in the larger units (10" and above) and 45 MB of project storage memory for the 4 and 7 inch models and 90 MB for the 10 to 22inch models, these HMIs provide much better trending, extra data storage, faster communication, and improved file types including jpegs.

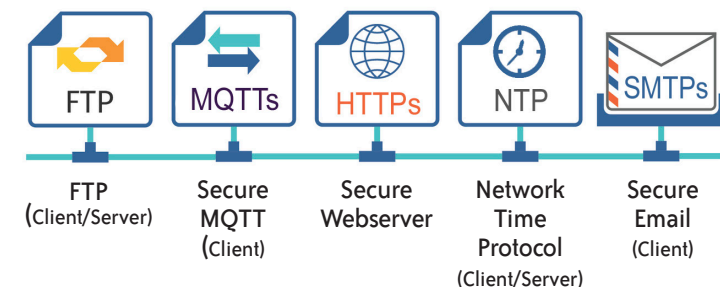
## 4 THE EASE OF USE

The FREE CM5 programming software offers a huge selection of easily-configured, drag-and-drop objects including pushbuttons, switches, numeric displays, and much more. There are also numerous tools and a simulator to aid in creating and validating projects quickly and efficiently. With C-more, no matter how complex the system, designing the interface is a piece of cake!



## 5 THE IIOT

CM5 HMIs support many of the protocols found in IIoT capable systems including FTP, HTTPs, and the secure lightweight MQTTs protocol. MQTTs is considered the standard IIoT protocol and is used to provide a vital link between plant floor operations and cloud-based business systems.





# Numerous Hardware Options

The C-more CM5 series provides many hardware options with the variety of screen sizes and communication capabilities. The CM5 line offers our largest HMI option, an impressive 22-inch HMI at a cost our competitors can't beat! If that's too much HMI, the CM5 series also offers several other sizes down to the very compact 4 inch for those small systems that don't need all the bells and whistles.

With each panel comes a host of communication ports for plug-and-play connections with industrial networks. All CM5 panels have serial and Ethernet ports that support many of the most popular industry protocols, including EtherNet/IP and Modbus. The included USB ports provide in-an-instant connections for programming and peripherals like keyboards, USB-to-audio converters, barcode scanners, memory storage, etc. And the embedded SD-card slot provides easy project transfers or up to an additional 2TB of data storage (depending on model) for important log files.

Part Number	Screen Size (widescreen)	Ethernet	SD Card Slot	Serial Ports	USB 2.0 Ports	Processor Speed	Memory	Power	
CM5-T4W	4.3"	1 port	1 Slot	2 Ports	1 type-A 1 type-B	800MHz	45MB	12-24 VDC	
CM5-T7W	7"								
CM5-T10W	10.1"	2 ports		3 Ports	1 type-A 3 type-B	1.6GHz (quad core)	90MB		
CM5-T12W	12.1"								
CM5-T15W	15.6"								
CM5-T22W	21.5"								
CM5-RHMI	None			2 Ports	4 type-A 1 type-B				

- 16.7M colors and LED backlights
- 800MHz or 1.6GHz quad core CPU
- 45 MB to 90MB project storage memory
- 12 to 24 VDC powered
- Built in real-time clock with 30 day backup (no battery required)
- NEMA 4/4X (indoor use only), IP65
- USB 2.0 Type A for USB HID compliant devices / storage memory devices
- USB 2.0 Type B port for programming

Need a bigger screen or none at all?  
The C-more CM5 headless HMI has you covered

Compatible screen resolutions:

- VGA 640x480
- SD 720x480
- XGA 1024x768
- HD 1280x720
- FHD 1920x1080

22in - 1920x1080

15in - 1366x728

12in - 1280x800

10in - 1024x600

7in - 800x480

4in - 480x272

Full-featured  
22-inch HMI  
only  
\$2,299

All panels support both landscape and portrait orientations

4-Pin Power Connector  
(12-24 VDC)

3-Pin Serial Communications Port  
(RS-485)  
\*Available on 10" and larger models only

USB Programming Port  
(Type-B)

USB Port(s)  
(Type-A)  
\*3 USB-A ports included on 10" and larger models. Support for HID compliant USB peripherals like keyboards, USB-to-audio converters, barcode scanners, memory storage, etc.

SD Card Port  
for data logging or program transfer

15-Pin Serial Communications Port  
(RS-232/422/485 D-Sub)

RJ12 Serial Communications Port  
(RS-232)

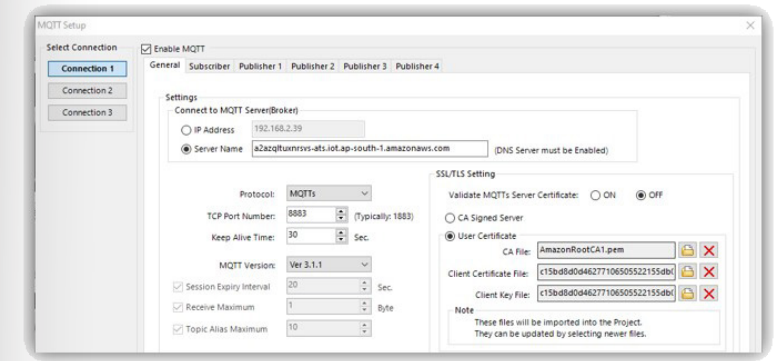
RJ45 Ethernet Communications Port(s)  
(10/100 Base-T)  
\*2 Ethernet ports included on 10" and larger models



# State-of-the-Art Communication



The CM5 series also supports the secure MQTT (with TLS) protocol which has become the frontrunner for many IIoT/ cloud applications due to its lightweight overhead and reduced bandwidth consumption. All the CM5 series HMIs can act as an OT/IT bridge between your local PLC(OT) and the external IT systems (cloud and business systems) by capturing, processing, and visualizing local data while existing on the remote edge of the network. The C-more panel can connect to one MQTT Broker for each connection for a total of three broker connections.



## FREE Remote HMI Mobile App

Mobile users can download the FREE C-more Remote HMI app from the Apple iTunes store, Google Play, or Amazon App Store. With the mobile app, your HMI is always with you, allowing you to conveniently monitor and control your system remotely from wherever you may be.



## ENTERPRISE

C-more CM5 HMIs have all the communication capabilities needed for modern-day control systems. The 4- and 7-inch HMIs come with a single Ethernet port for easy networking with other control devices. The 10" and larger models feature an additional Ethernet port, allowing them to act as a data bridge between separate OT and IT networks.

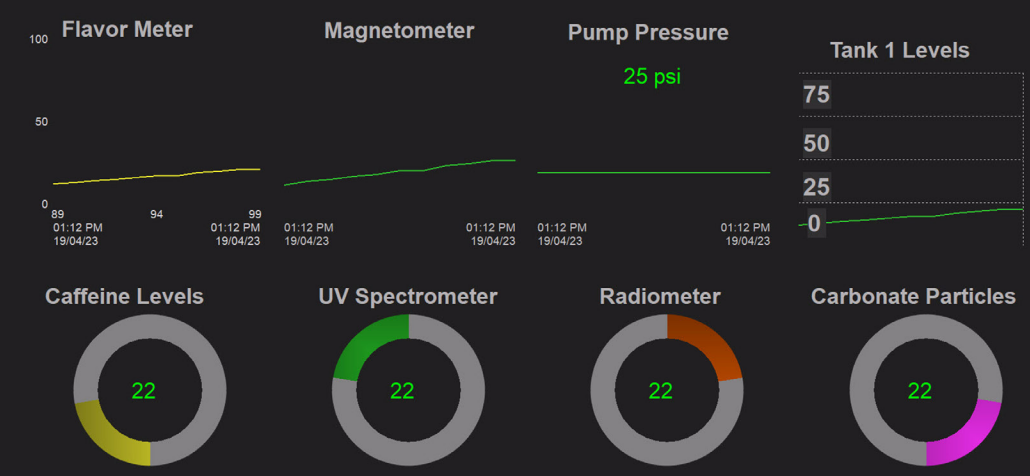
Use these ports to easily gather production data from your plant floor PLC network (OT) using your desired fieldbus protocol. Then transmit that data to the enterprise network (IT) using the ftp protocol where it can be analyzed by inventory management systems, etc.



## FIELD BUS

### Bottle Line 1

Bottle Count: **22 units** Case Count: **100 Units**



## Supported Drivers

\*Please refer to the technical specifications for further details.

### AutomationDirect:

- Do-more, Productivity, CLICK, DirectLOGIC, Think & Do PLCs
- GS Drives
- SOLO Temperature Controllers
- K-Sequence
- DirectNET
- ECOM Ethernet
- Modbus RTU
- Modbus TCP/IP

### Allen-Bradley:

- A-B DF1
- A-B EtherNet/IP Client
- A-B EtherNet/IP Server
- Generic IO Messaging

### GE:

- 90/30, 90/70, Micro 90, VersaMax Micro (SNPX)
- 90/30, Rx3i (SRTP Ethernet)

### Omron:

- Omron Host Link Adapter
- Omron FINS (Serial and Ethernet)

### Mitsubishi:

- FX Series CPU
- FX-1N(C), 2N(C), 3U(C) CPU
- Q Series (QO2, QO2H, QO6H, Q12H, Q25H CPU)
- Q/QnA (Serial & Ethernet)

### Siemens:

- S7-200 (Serial: PPI)
- S7-200 (Ethernet: ISO over TCP/IP)
- S7-300 (Ethernet: ISO over TCP/IP)
- S7-400 (Ethernet: ISO over TCP/IP)
- S7-1200 (Ethernet: ISO over TCP/IP)



# Security Matters

## Secure MQTT(with TLS)

With Secure MQTT you can have encrypted data without having to configure the broker. It also means that data is encrypted end to end and not just between the broker and the client.



## SMTPs Client (Secure Email)

SMTP, SMTPS, and STARTTLS protocols are supported. These encryption protocols are used to secure any email messages in transit, which helps to protect the privacy of sensitive information and ensures messages are delivered to the intended recipient only.



## HTTPS (Secure Webserver)

HTTPS provides a more secure and trustworthy browsing experience than HTTP, protecting users' sensitive information from interception and misuse, and helping to prevent attacks like phishing.

Create a private or public key that can be stored in the panel project. Remote users will need the correct credentials to access the HMI's built-in Web server.



## Manage Ethernet Port Access

Port management tools allow the ability to disable ports that are not being used, as well as require user login credentials when attempts are made to connect to the panel.

Online panel operations effected by username and password:

- Transfer project to panel
- Read project from Panel
- Panel information
- Change panel IP address or name
- Display screen
- Adjust clock
- Reboot
- Clear memory
- Reset factory defaults
- Reset web server contents
- Update firmware




## Manage Access to the HMI

Up to eight user group accounts can be configured for various levels of access to the HMI. Use these group passwords to control:

- Screen Access: Screens can be configured with passwords to allow access to only authorized individuals.
- Alarm Log Access: Requires password before user can clear alarms.
- Object Activation: Configure application critical objects to limit access to specific individuals (pushbuttons, switches, data entry objects, etc.).



## HMI System Screen Access

A password can be configured to control access to the series of built-in System Setup screens that allow the user to:

- View detailed information about the panel
- Adjust certain features
- Configure communications
- Test various functions of the touch panel
- Backup & restore firmware, recipe, log, and project memory
- Clear memory and reset all values and conditions back to the original factory defaults.



## Remote Access Accounts

There are three Remote Access user accounts that are configured and stored in the panel project. Each account has a password option as well as a "Permission Level" field that can be configured by the user. The user accounts are for Remote Access permissions, which are:

- View only
- View & screen change (control buttons only)
- Full control



## Project Protection

If the project loaded in the C-more panel was saved as a "Protected Project File", then users who go online with the panel cannot save or edit the project using the IP address that they have been given for the Remote Access Connection. This keeps users from intentionally or unintentionally saving or editing the project file. The project should be protected if the panel is located on the internet and users know the IP address.



# Supreme PLC Compatibility

C-more HMIs can support many brands of PLCs and in particular include many protocols for the Allen-Bradley PLC brand. C-more's A-B Ethernet drivers allow the simple connectivity of multiple panels and/or multiple Allen-Bradley PLCs.

## Allen-Bradley® PLC Driver Support:

- ControlLogix®
- CompactLogix™
- FlexLogix™
- SLC™ 5/05 Ethernet
- MicroLogix™ 1100/1400 Ethernet
- Micro800™

Including:

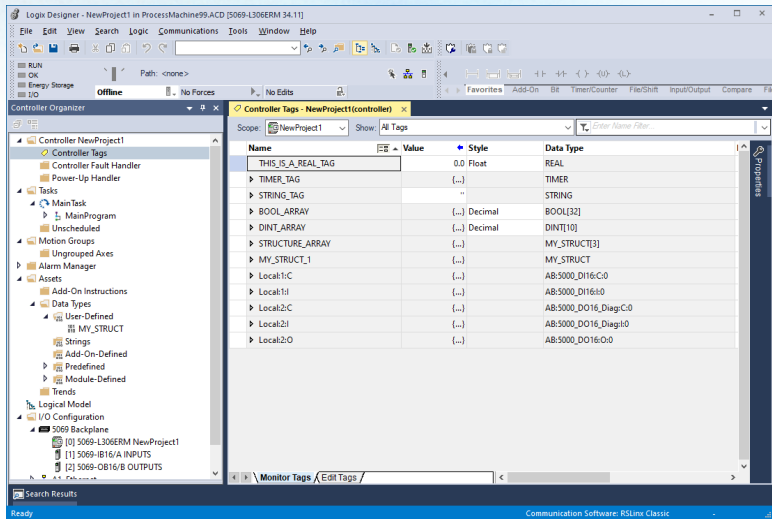
A-B DF1 / A-B EtherNet/IP Client / A-B EtherNet/IP Server



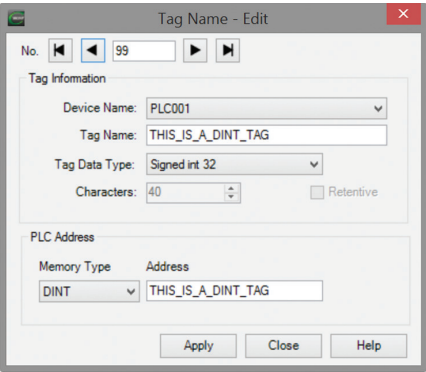
## ControlLogix EtherNet/IP tag-based messaging

C-more HMIs also support ControlLogix EtherNet/IP Tag Messaging. This drastically reduces the time required to map your PLC tag database into another device. You can import the RSLogix 5000 L5K file directly (1 below), or with just a few clicks of the mouse you can directly enter your ControlLogix/ CompactLogix tags from the PLC into C-more (2 below). No mapping or translation required!

1. Import the tags directly from the RSLogix 5000 (.L5K file)

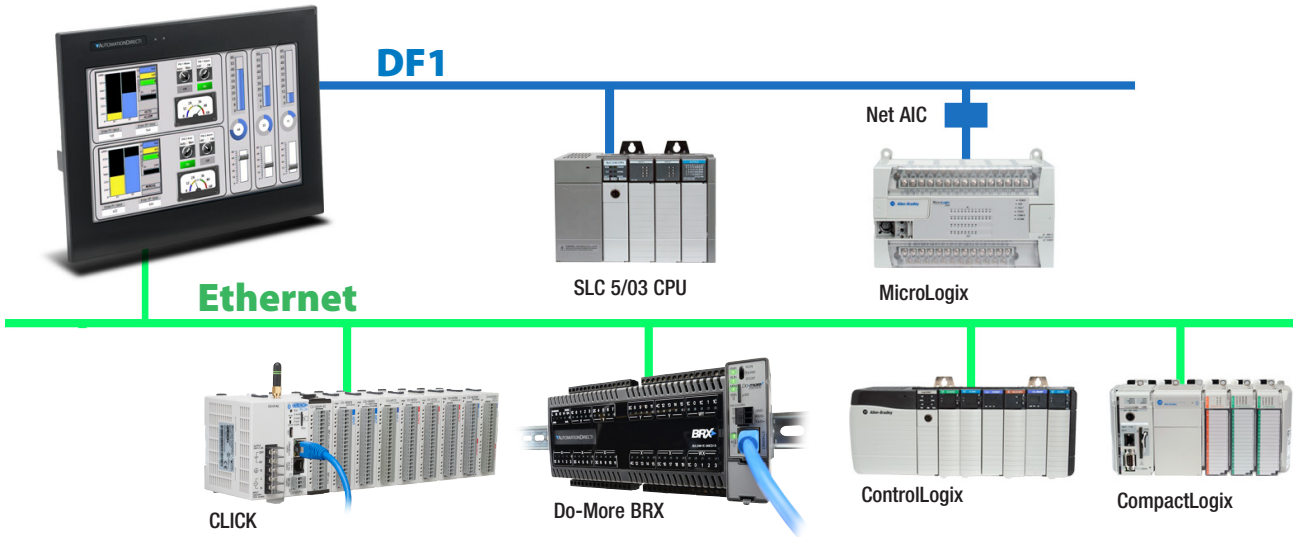


2. Type in the PLC tag names directly. You can use the PLC tag names as your C-more tag names or choose a different C-more tag name when appropriate.



## Protocol bridge

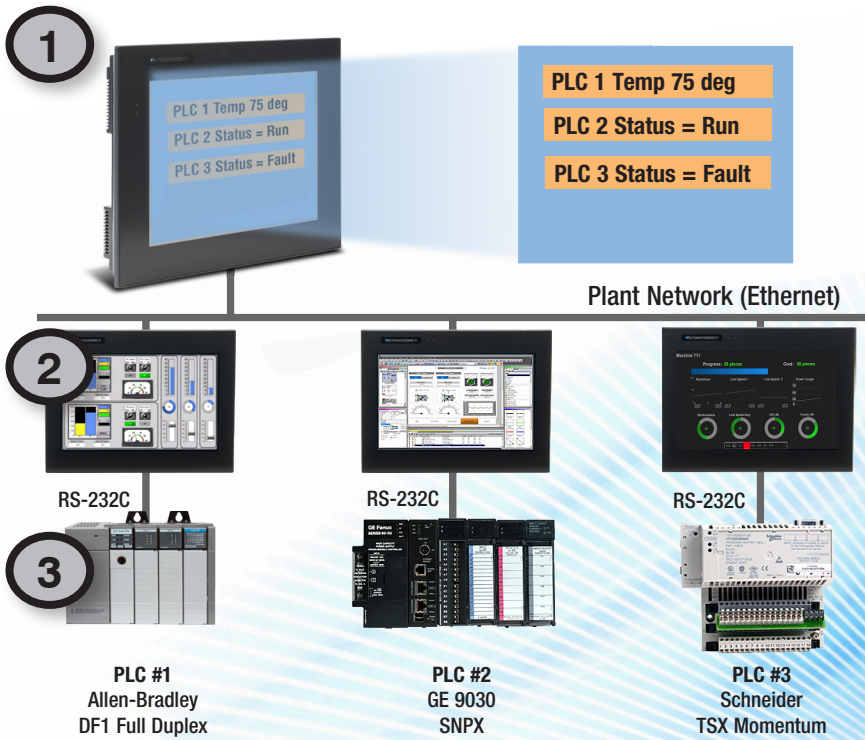
Connect multiple brands of PLCs to C-more and communicate with them simultaneously. Use the Event Manager to periodically send tag values from one controller to another or when certain conditions are met. C-more can even act as a "protocol bridge", passing values back and forth between PLCs that use different protocols.



## Panel pass-through

C-more panels can access data from supported controllers attached to other C-more panels via an Ethernet connection.

1. The C-more client panel is configured to display the data collected from each PLC connected through a C-more server panel.



2. Each C-more is configured as usual. When the client panel is configured, the server panels will pass through data from the PLCs to the client.

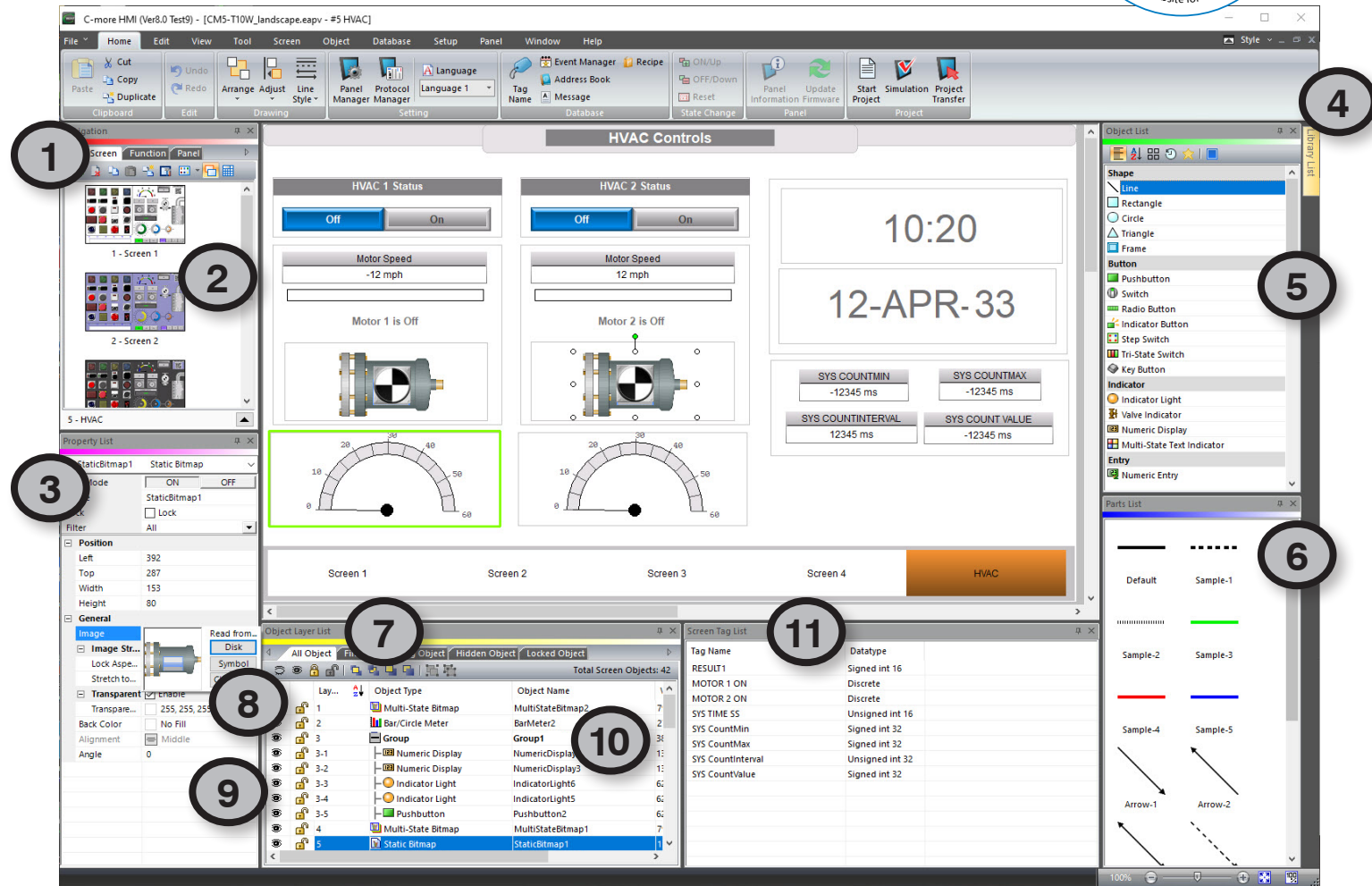
3. Each PLC is operating a separate application and is connected to a C-more panel through a serial connection.



# Lots of Programming Power

## Powerful FREE configuration software with legendary ease of use

C-more's mission is to make you feel like a touch panel expert, so we put in many tools to make your job go faster and more efficiently. With these tools you'll be able to do way more with C-more in even less time!



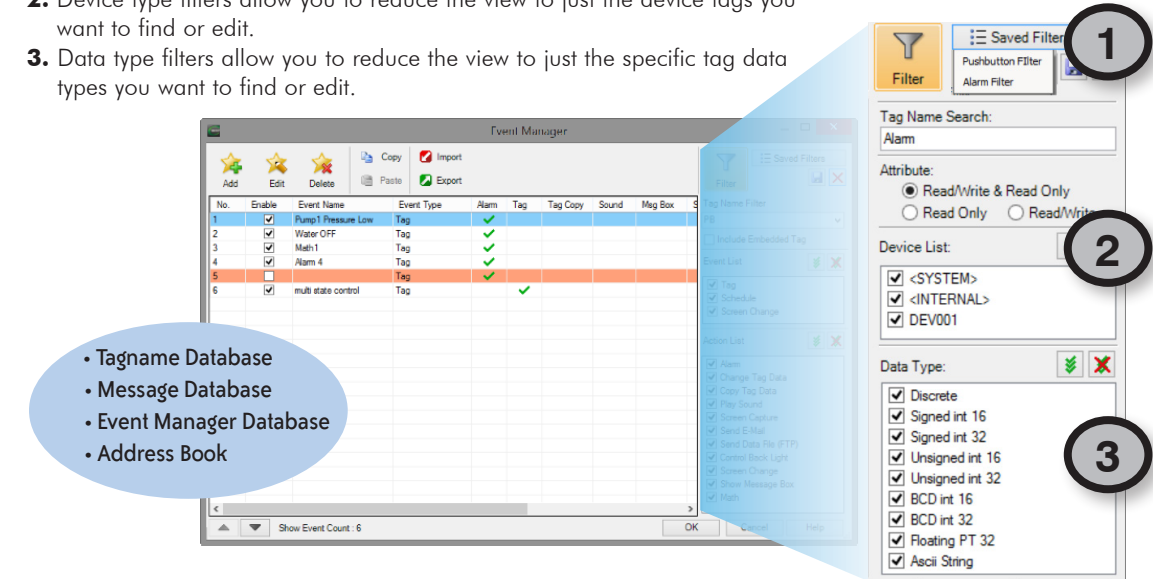
1. Save your screens in the Screen Library to use with other projects.
2. Project thumbnail window helps you organize multiscreen projects; rearrange the screens as needed with a drag-and-drop of your mouse.
3. The Property List shows object details and allows you to modify images.
4. The Library tab has personally stored objects, screens, sound bites, etc. available for future use.
5. The scrolling Object selection window lets you find the object you want fast. Just drag and drop it on the screen.
6. Scrolling Parts List shows variations of the objects selected above. Just drag and drop on the screen.
7. The Object Layer List window shows all the objects on the active screen. Select an object from the list to edit or highlight it.
8. Lock/Unlock object tool disables edits to objects that are locked. Once locked, the object will remain locked and saved within the software. This can reduce edit mistakes to objects when multiple users are accessing or editing a project.
9. Hide/Unhide object tool allows hiding of objects that may interfere with other objects on the screen, such as Pop-up window objects.
10. Grouping control allows access to individual objects in a group without having to separate the group or move objects on the screen.
11. The screen tag list displays all the tags on the selected screen. This tool offers a quick way to find and select objects based on the tag that is assigned to it. When used in coordination with the Object Layer List, a user can navigate and select objects on the screen without having to ever click on the actual screen. This comes in handy on large screens with hundreds of objects and tags.

# Helpful Database Tools

## User-friendly databases

Easily edit C-more's databases with user-friendly software tools. Create, import, export, and search for tags and other datatypes with a click of a button. Powerful search filters allow for custom search terms based on various options.

1. Customize and save your own search terms for those most used items.
2. Device type filters allow you to reduce the view to just the device tags you want to find or edit.
3. Data type filters allow you to reduce the view to just the specific tag data types you want to find or edit.



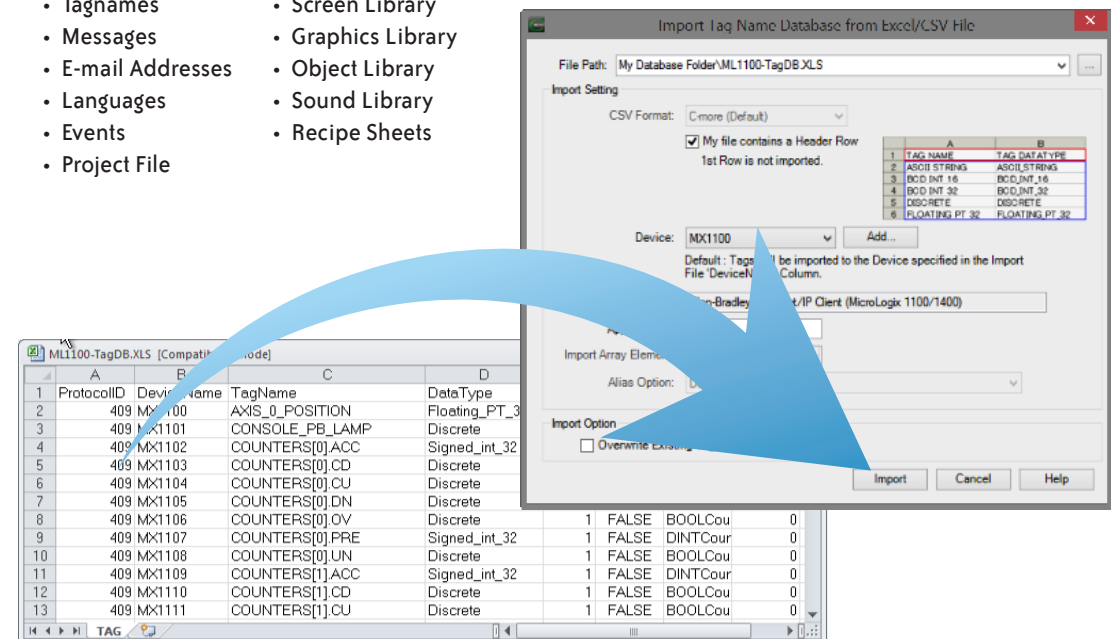
## Database Import & Export saves you lots of time

The Import and Export tools allow you to quickly exchange database files between C-more projects, or PLC tagname files. With supported PLC databases, simply export the PLC tagnames and use the C-more import tool to select the .csv or xls file. Or with just a few clicks of the mouse, you can export your HMI tags to a .csv or xls file. This greatly reduces the time needed to create a new database, especially when there are hundreds, or thousands of data points to work with.



### Easily import or export:

- Tagnames
- Messages
- E-mail Addresses
- Languages
- Events
- Project File
- Screen Library
- Graphics Library
- Object Library
- Sound Library
- Recipe Sheets





# Don't Wait, Simulate!

## Built-in project simulator pays for the HMI in time savings!

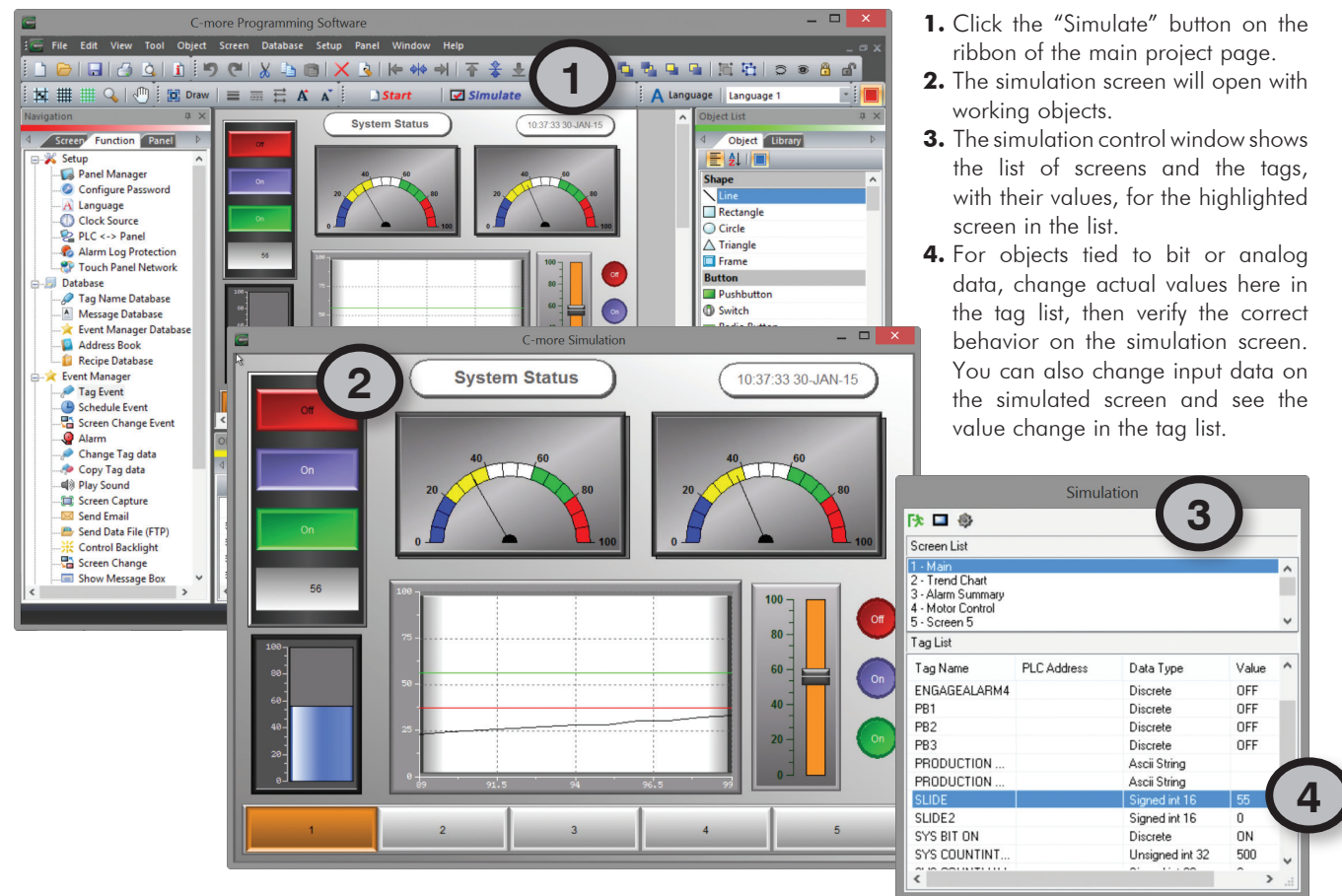
The “one click” built-in simulator is one of **C-more**’s greatest features. This feature allows you to fully simulate your entire project (every object, every screen) while it is being developed, without being connected to a PLC/PAC. Simply click on the “Simulate Project” button at any stage of project development. A window will appear over your development screen that contains a pixel-for-pixel representation of how your project will appear on your physical screen along with a simulation control window.

Now the fun begins. Click your mouse on any simulated screen object and it will behave as if your finger is actually touching the screen. For example, clicking on a pushbutton object will activate and deactivate it as if an operator were touching it. The same will be true for thumbwheels, slider switches (simply hold your mouse button down and slide), selector switches, toggle switches, and so forth. Want to see how an analog meter moves based on dynamic data from the PLC? Simply move your mouse to the simulation control window, move to the tag and click on the data you wish to change.

Now type in the value that you want to simulate, and watch your meter move on the simulated screen.

And here’s the really cool thing - whatever values you modify during simulation, the effect will be propagated throughout your entire project, object by object, screen by screen. That’s because this is a true “project simulator”.

To stop the simulation, just click on your project development screen and you’re back to project configuration. You can go back and forth in a flash. It’s that easy! You’ll find yourself using this feature every couple of minutes while developing your project which will result in a better looking and more effective project completed in less time.

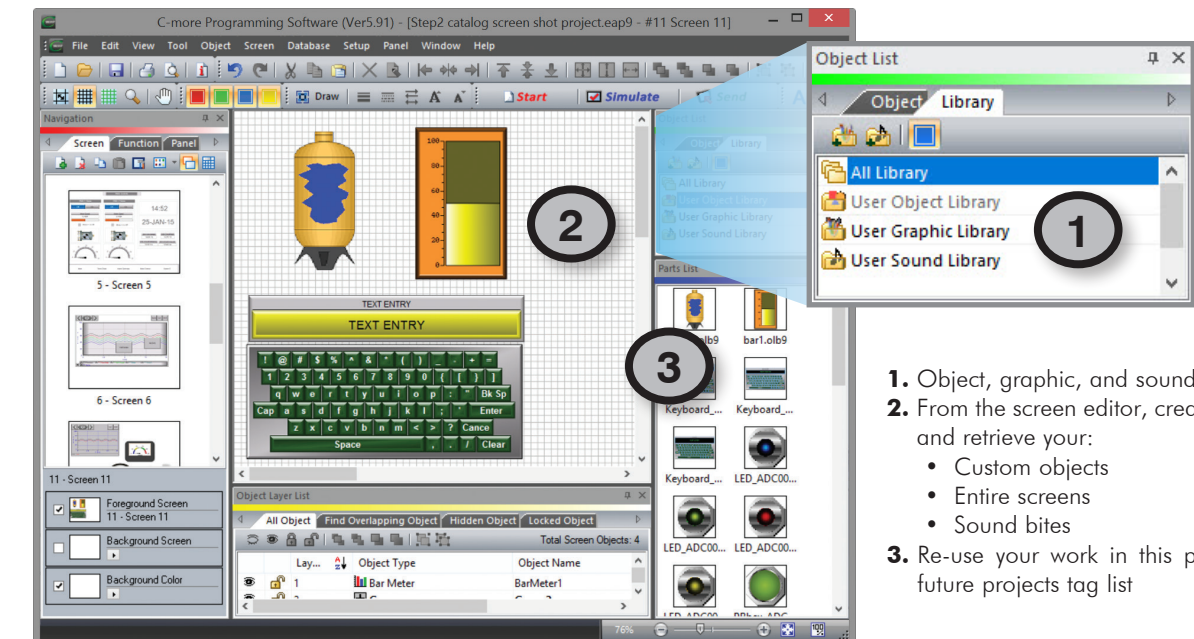


Click - it's now a 6-inch project

# User Libraries and Project Migration

## User libraries allow you to re-use your work again and again

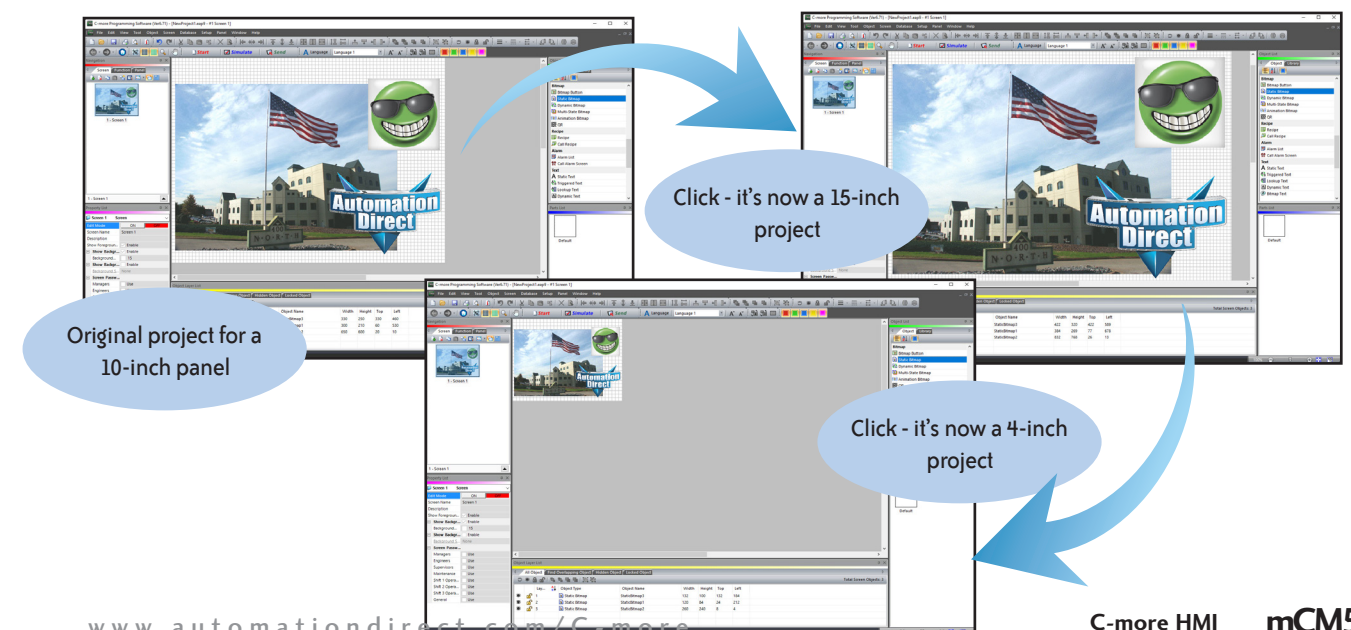
C-more provides three user libraries that allow you to efficiently re-use your work throughout your project or for other projects in the future. You can store a custom object, such as your company logo or a group of objects that compose a custom object (see the tank with cut-away and bar graph below). You can also store entire screens, graphics and sound bites. You can access your libraries at any time and re-use your work by merely clicking on the saved item and dragging it from the library into your project. You can even import and export library items to share with other designers.



1. Object, graphic, and sound libraries
2. From the screen editor, create, store, and retrieve your:
  - Custom objects
  - Entire screens
  - Sound bites
3. Re-use your work in this project or future projects tag list

## Change your project screen size with a click of your mouse

Imagine developing your project for a 10-inch panel and then deciding to change the size to a 15-inch panel or a 4-inch panel. In the past, you most likely had to recreate your entire project and reconfigure every object, tag, and screen. With C-more, your project can be automatically converted for a different size display with a click of the mouse. Of course, you may wish to move things around a little since you have a different screen size. This feature is great for OEMs or integrators that may be installing different configurations of the same machine or process.



Original project for a 10-inch panel

Click - it's now a 15-inch project

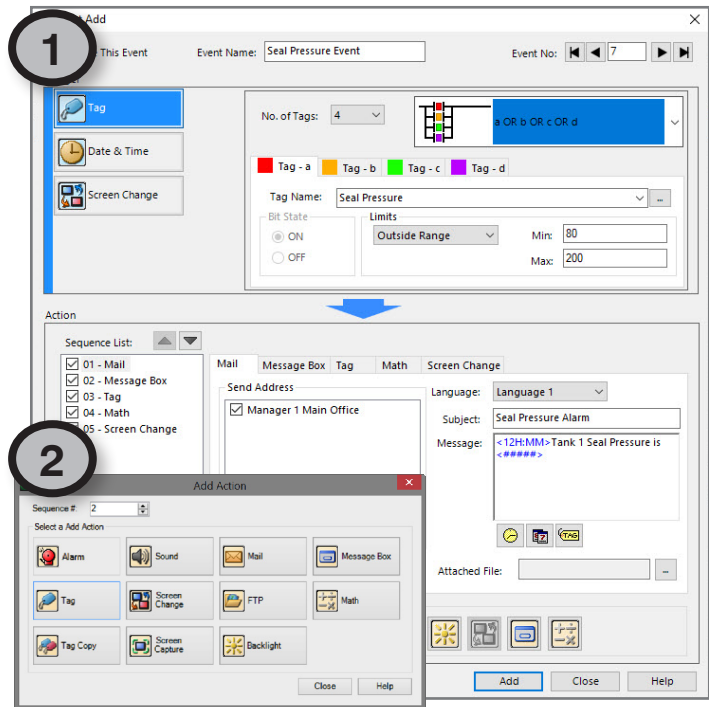
Click - it's now a 4-inch project



# Versatile Event Manager

## Fill-in-the-blank Event Manager makes programming a cinch

**C-more** provides a powerful yet easy-to-use Event Manager which takes exception handling (including alarms) and scheduling to the next level. The simple fill-in-the-blank manager allows events to automatically trigger several actions without the need for hours of PLC programming.



It only takes 2 simple steps to set up your object actions.

1. Choose the trigger event based on:

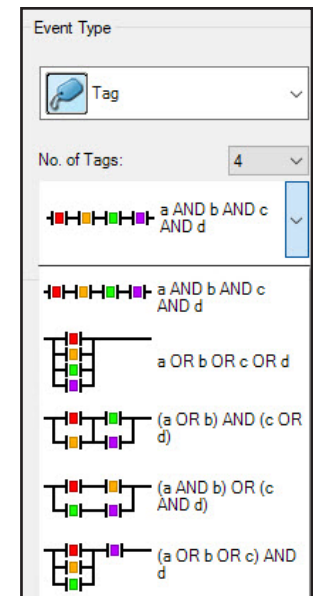
- Tag status or value
- A combination of tag statuses or values
- Date or time
- A screen change

2. Select the desired action:

- Create an alarm
- Play a sound
- Write values to tags
- Copy tag values
- Send e-mails (with embedded tag data)
- Force screen changes
- Capture screen image
- Pop-up messages (with embedded tag data)

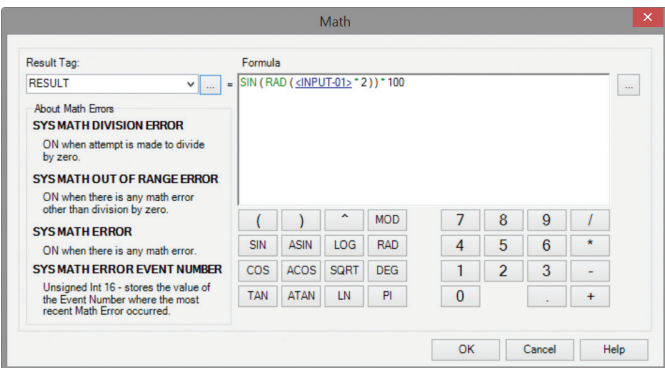
## Tag combinations for simple logic with multiple events

Combine up to four different tags into simple logic events that will trigger actions.



## Math actions add more power to your project

Create a custom formula or use the Math keypad to create formulas with constants or even tag values.



1234 + SIN(<TAG> + PI(123) + LOG a

- Numbers in Black
- Tags in Blue
- Calculations and functions in Green
- Errors in Red

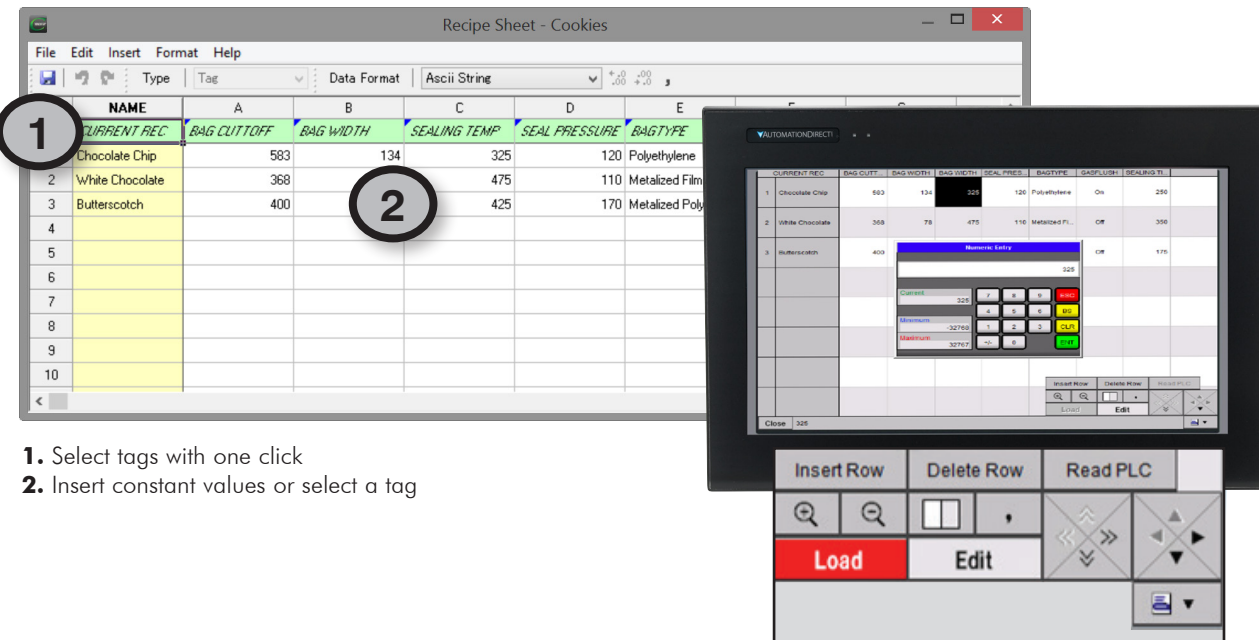
# Convenient Recipe and Alarm Functions

## Flexible recipes reduces programming effort

C-more provides tremendous flexibility and capacity to applications that require frequent configuration changes. It has a simple recipe button that supports 99 recipe sheets, each with 1000 recipes of 256 possible tags or values. Recipes make it easy to make large numbers of tag changes with the push of a single button. C-more recipe values can also be modified and saved on-the-fly by the operator while the machine is running.



## Spreadsheet-based recipe creation



1. Select tags with one click

2. Insert constant values or select a tag

## Alarm List Object offers detailed alarm management for operators

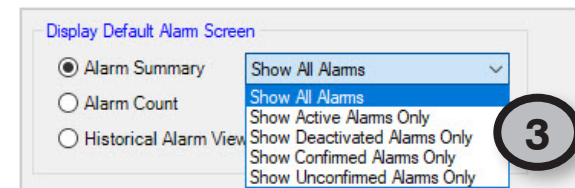
Alarms are used to notify operators of critical situations that may arise during a process. The Alarm List Object allows operator interaction with alarms that have occurred and allows operators to view, confirm, or clear the alarms. Alarms can include specific messages with embedded PLC tag data as well as date and time information for the alarm status. Alarm status can be color coded to help operators quickly interpret the status for each alarm.

1. Icons help to see alarm states.

2. Color coded alarm status aids in alarm recognition.

3. The Alarm List Object can be filtered to show alarms based on status, behavior on the simulation screen. You can also change input data on the simulated screen and see the value change in the tag list.

Alarm Summary		Total of 4 Alarms		
Message	Confirm	Activated	Confirmed	Deactivated
Chocolate Chip Low	Required	15/02/28 09:35:53		15/02/28 09:36:00
Butterscotch Low	Required	15/02/28 09:35:53		
Cookie Monster Alert		15/02/28 09:35:38	15/02/28 09:35:49	
Furnace Overtemp		15/02/28 09:34:43	15/02/28 09:34:57	



The Alarm List Object allows alarm details to be displayed and logged for future reference

3

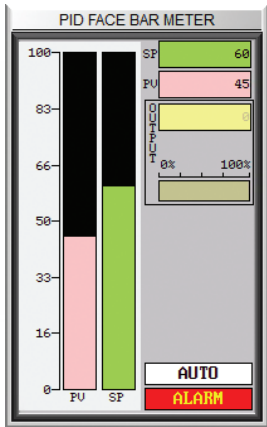
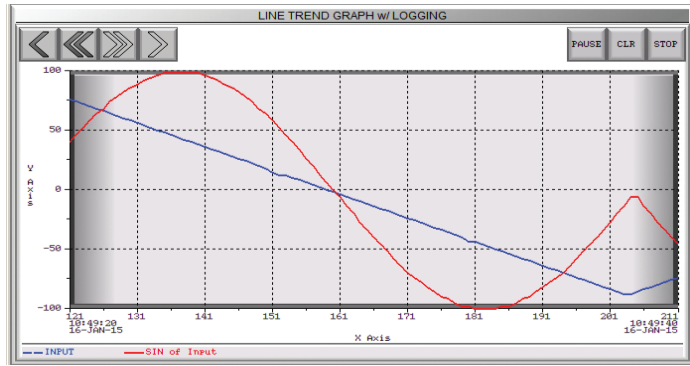


# Trends, Logging, and Control Options

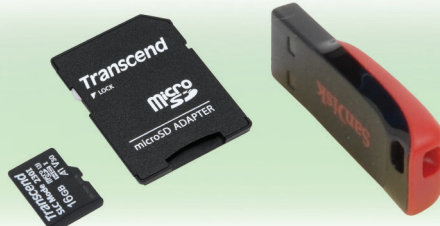
## Trend graphs, PID faceplates, true historical data logging

C-more's trend graph supports 16 pens, selectable to be hidden or shown by the operator. Show only the trends you wish to see, when you wish to see them. In addition, the full featured C-more units support data logging to SD cards or USB memory devices. Gigabytes of trend data can be stored, limited only by you. The information can also be sent from C-more to your PC over the Internet, triggered by an event.

C-more also has the standard PID faceplate and an enhanced version which shows trend data of the setpoint process variable and control variable.

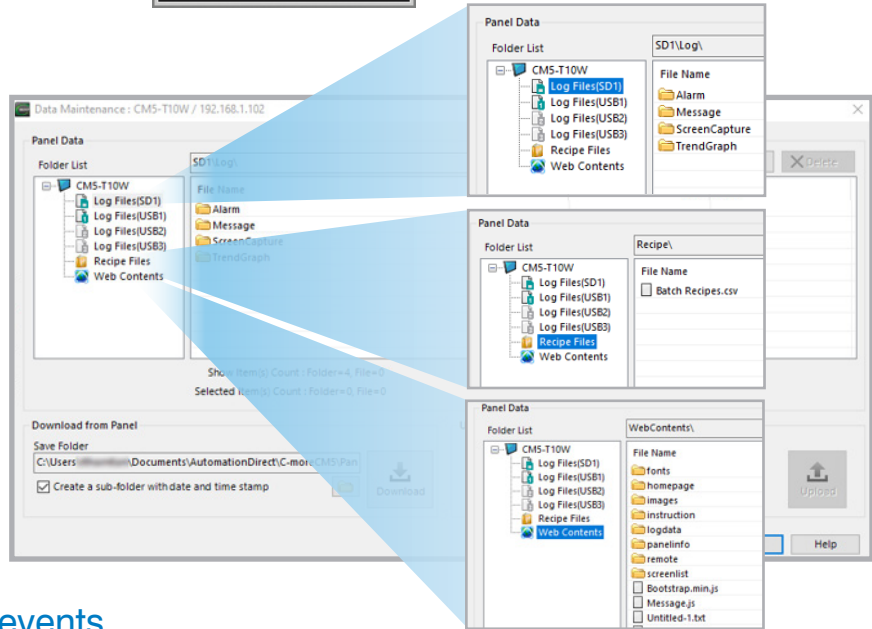


## Log to SD card/USB



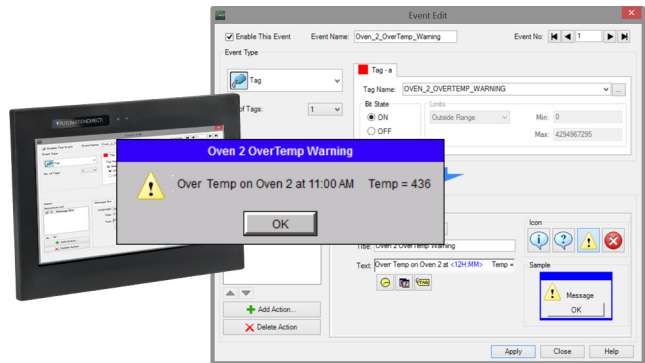
## Data Maintenance tool

The Data Maintenance tool is built into the C-more software and allows access to the files on the connected C-more panel. This is a much more convenient method than using an FTP client to download log files or upload recipe files.



## Pop-up message boxes for critical events

Create Pop-up Message Boxes in the Event Manager. You define the trigger criteria, and then select "Message Box" as the "action". You can type in a short message to appear in the box, and select an icon to display with your message. You can even include tag data, and date/time information in the message. The operator must click the OK button in order to clear the message box. You can also log an alarm at the same time the message box is activated via the event manager (along with many other actions).



# Wide Assortment of Fonts and Animation

## Numerous fonts

C-more has 14 different fonts for objects such as pushbuttons, indicators, meters, and so on. These fonts are used for object-integrated labels and ON/OFF phrases for each of C-more's standard objects. Each font can be bolded, italicized and underlined. Fonts can be scaled to hundreds of sizes, giving you extreme flexibility.

Need even more fonts? Use any of the dozens from your PC as "Bitmap Text" (although bitmap text cannot be used as an integral part of standard objects, they can be used for a wide variety of static annotations).



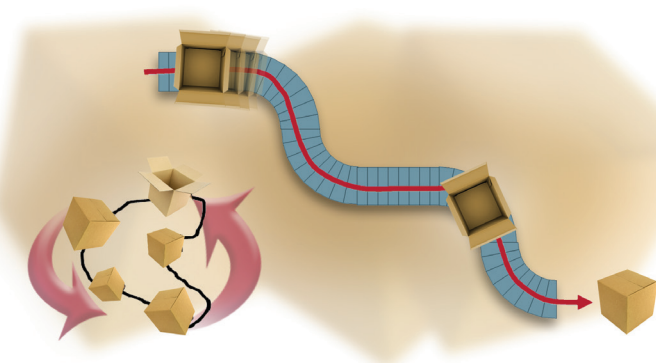
Object Fonts



Bitmap Text Fonts

## Built-in animation makes the process come to life

Virtually any bitmap object (from your PC hard drive, the built-in 4,000 symbols, custom-drawn, etc.) can be animated to follow a straight line or a scribbled path. In addition, the object can change size or orientation (rotation). Of course, the object can also do any combination of actions as well. Best of all, the animation process is very straightforward. You will be animating your first object in as little as a few minutes!



A bitmap object (picture of cardboard box) follows a curving path along a conveyor (the path can be hidden). The box can rotate around the bends in the path and even change sizes. The bitmap changes toward the end to a closed box shape.

## Axis animation:

PLC tag values dictate the actual screen position of an object. Move objects along a single axis or use different tags for simultaneous X-Y position control.

## Point animation:

Define a path with up to 64 points for point-to-point object motion, or use "ratio" mode to move smoothly along a path. Scaling of PLC tag values to the path positions is optional.

## Object rotation:

Control rotation of an object based on the value of a PLC tag. Also allows scaling of tag values to angular values.

## Object size:

Control the size of an object based on PLC tag values. Independent X and Y-axis scaling of object size is possible, along with scaling of the tag values.

## Multi-state bitmap:

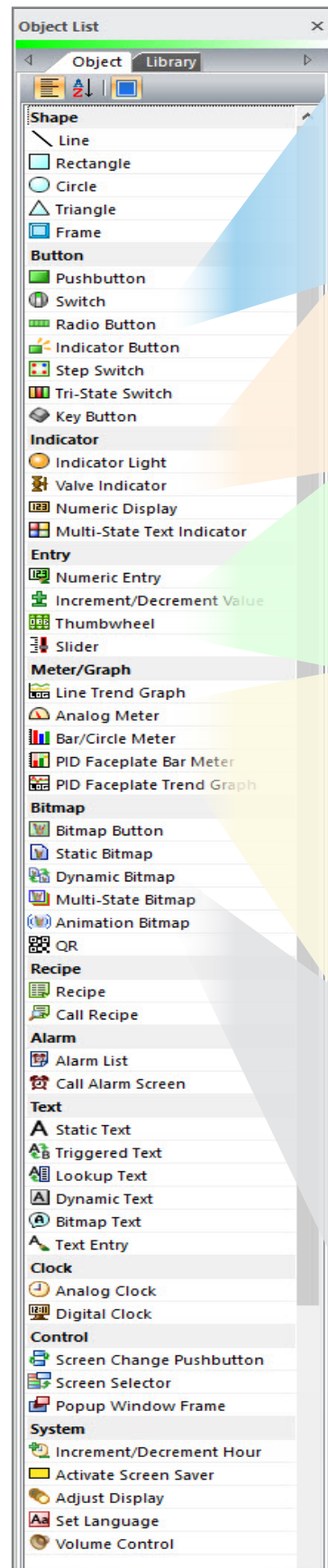
Use up to 16 different bitmap images to animate changes in the appearance of an object.

## Benefit:

Animations of machine motion and factory processes enhance comprehension, and give operators a visual representation of the desired motion of products, and machinery on screen.

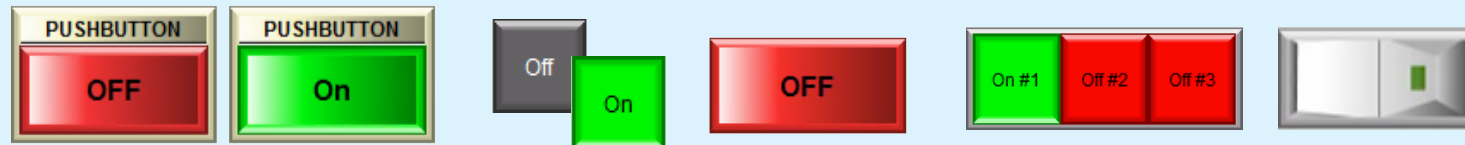


# Huge Array of Objects and Customized Parts



Just a few of the more than 50 types of objects in the standard Object List:

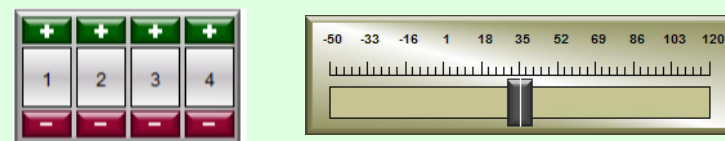
## Pushbuttons/Switches



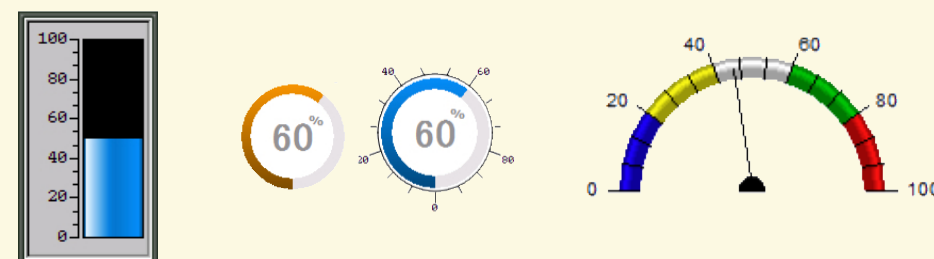
## Indicators



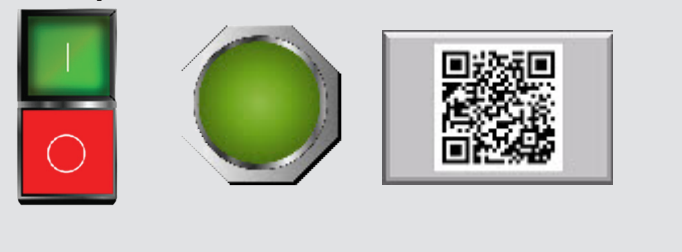
## Data Entry



## Meters/Graphs

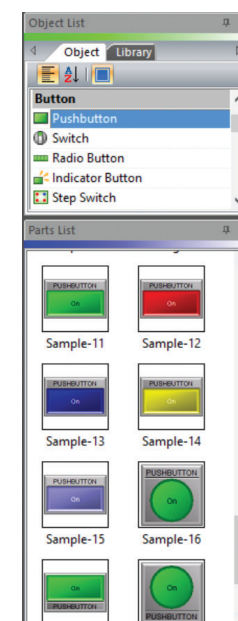
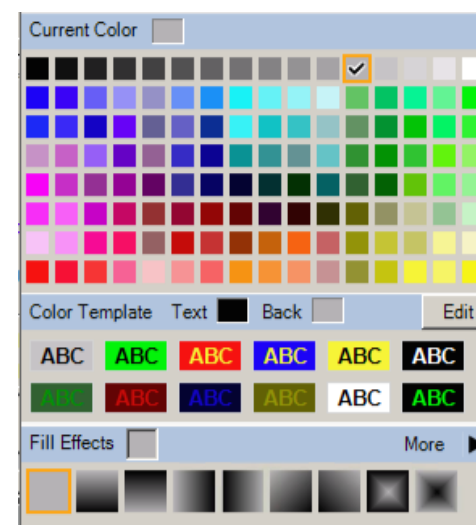


## Bitmaps



## Personalize your screens

Object Format options make personalizing your screen objects simple. Select the colors, frames, and background effects with just a few clicks of the mouse. Choose from the default color templates or create and save your own templates to use as often as you like. Backgrounds for many objects support gradient fill effects that make them stand out.



## Hundreds of pre-configured parts

C-more also provides ready-made "parts" (versions of each default object) that are available to drag and drop into your project. Select any object to see preconfigured parts in the Parts List. Select the one that most closely matches your needs - and customize it even further, if you like. Then save it in the user library for future use.

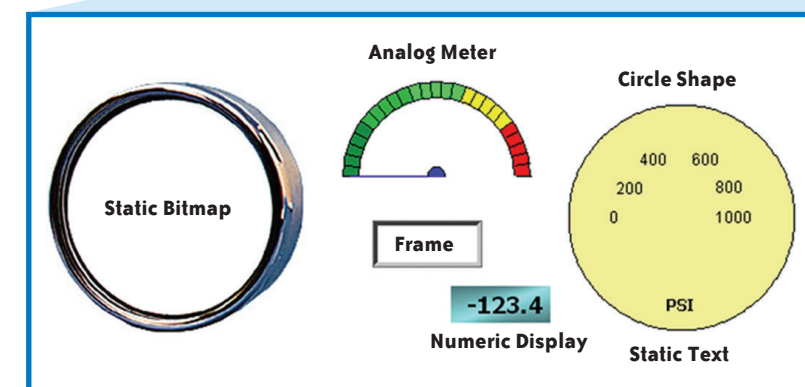
## Over 4000 industrial graphics with Symbol Factory

Select from 80 different categories offering vector graphics that can be scaled up and down in size without loss in image quality. Free Cutaway Control is also included for doing tank type fills. If that is not enough, you can always use your own bitmap graphics with the same objects.



## Create custom objects

Use a combination of C-more objects and parts to create your own objects, or even entire sections of screens.



## Custom Object assembled from 12 parts

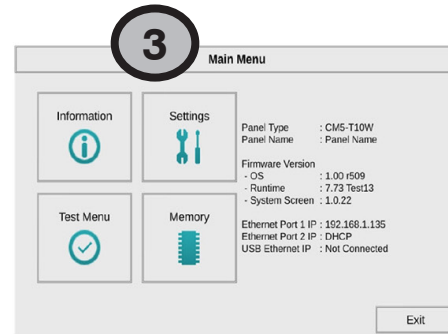
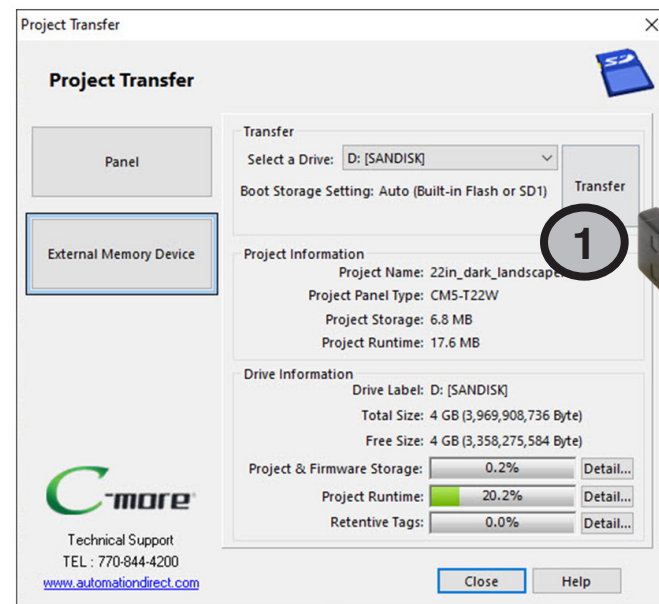




# Easy USB or SD Card Updates (no PC Required)

Use SD memory cards or a USB flash drive to transfer projects to your HMI without having to connect the HMI to a PC. Perfect for updating remote C-more interfaces, simply transfer the project to the SD memory card or a USB drive, take or send the flash device to the remote location, plug it into the HMI and transfer the project.

This is also a convenient backup of your project, or for when a damaged HMI must be replaced. Send project updates to users who might not even have the programming software. Projects can be transferred onto the flash device, and restored to the HMI.



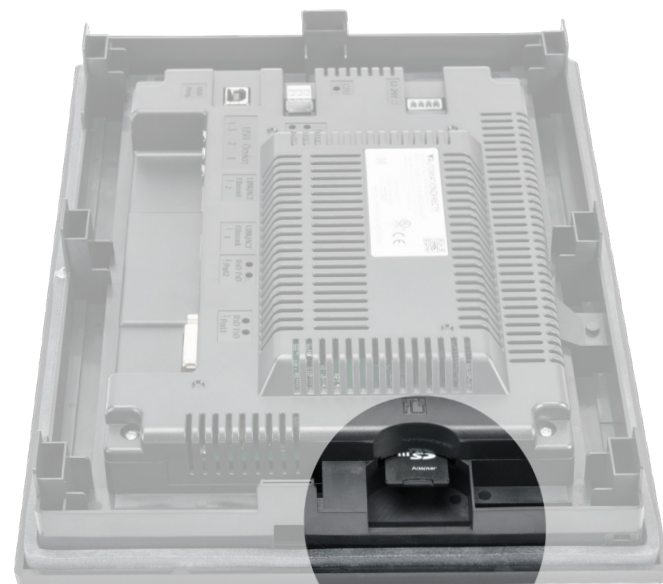
1. From the PC, transfer your project to an "External memory device".
2. Take (or send) the memory device to the HMI and plug it in.
3. Use the C-more system screens to restore your project into the HMI memory.

## Benefits:

- No PC required
- Saves you from traveling to job site, which saves you time & money
- Allows the end user to safely load the project without the C-more programming software

## Lots of memory for your project

C-more CM5 interfaces start with 45 MB of project storage memory for the 4 and 7 inch models and boast 90 MB for the 10 to 22inch models. On top of that, all CM5 series models have a USB Port-A connector, and one SD card slot. The 10-inch and above units have 2 additional USB ports. This allows lots of additional memory for data logging, screen captures, message logging, and alarm logging.



# Remote HMI Options...

## Touch your HMI from anywhere with remote access and control!

With remote access, you can remotely monitor and control screen operations of the C-more as if touching the screen itself, test and troubleshoot the C-more project, view, zoom, print, and save screen captures of active screens.

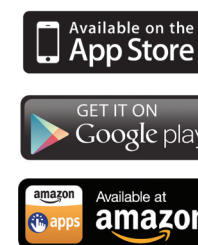
- No additional hardware required.
- The C-more Remote Access feature resides in all HMIs with Ethernet support, and requires no option modules.
- Access real-time data or initiate an action on a control system from anywhere, any time.

## C-more from your PC

With a Web browser on any PC, remote users can operate and monitor a local C-more HMI system from anywhere on the Internet or on a local network.

## C-more from your Mobile Device

Mobile users can download the FREE C-more Remote HMI app from the Apple iTunes store, Google Play, or Amazon App Store, to get remote access and control for Mobile devices.



## Convenient yet secure

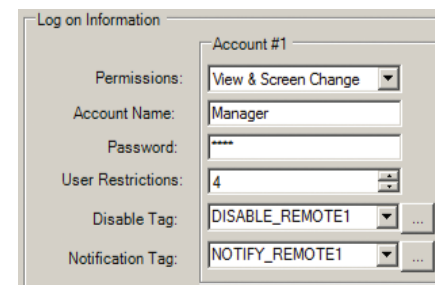
### Multilevel Logon Security

Three Remote Access user accounts can be configured and stored in the project. Each account allows up to five remote users to be connected simultaneously.

### Multilevel Access Control

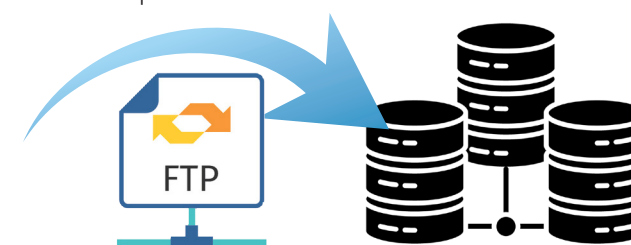
Each account can be configured in one of the following levels of access:

- View only
- View and allow screen change only
- Full control



## FTP Data Transfer

The FTP server (File Transfer Protocol) allows transfer of data files between C-more and any connected FTP compatible device (usually a PC). Your HMI can collect data and pass it to the PC on your desk, or to your corporate headquarters.



Corporate Databases

## E-mail

Use the Event Manager to send e-mails periodically or when certain alarms or events occur. You can also easily attach log files to the e-mail message.

C-more supports TLS and tag based storage of e-mail addresses so that operators can update them without the programmer's support.





# Time Tested, Industry Approved HMIs

Even though the CM5 series is the latest version in the C-more family, the legacy C-more EA9 HMI series is still a good choice for your operator interface needs. This series offers several sizes up to 15 inches with various communication ports.

## EA9 Series Touch Panel Features

- 64K colors and LED backlights
- 800MHz CPU
- 26MB to 42MB project memory depending on model
- 12 to 24 VDC powered (optional AC module available)
- Built in real-time clock with 30 day backup (no battery required)
- NEMA 4/4X (indoor use only), IP65
- USB 2.0 Type A for USB HID compliant devices / storage memory devices
- USB 2.0 Type B port for programming

## EA9 Series Touch Panel Lineup



**6in**  
EA9-T6CL-R (basic model)  
EA9-T6CL (full-featured model)

6in color TFT LCD, 320 x 240, QVGA, features serial and USB ports, and memory card slot. Full-featured model also supports Ethernet and audio out.



**12in**  
EA9-T12CL (enhanced model)

12in color TFT LCD, 800 x 600, SVGA, features serial, Ethernet and USB ports, memory card slots, HDMI video out and audio line out.



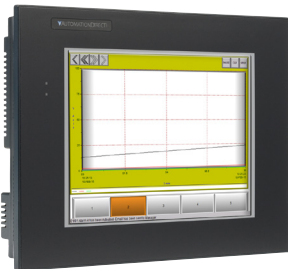
**8in**  
EA9-T7CL (full-featured model)

8in color TFT LCD, 800 x 600, SVGA, features serial, Ethernet and USB ports, memory card slot and audio line out.



**15in**  
EA9-T15CL-R (basic model)  
EA9-T15CL (enhanced model)

15in color TFT LCD, 1024 x 768, XGA, features serial, Ethernet and USB ports, and memory card slots. Full-featured model also supports HDMI video out and audio line out.



**10in**  
EA9-T10CL (full-featured model)  
EA9-T10WCL (full-featured widescreen)

10in color TFT LCD, 800 x 600 SVGA or 1024 x 600 WSVGA, features serial, Ethernet and USB ports, memory card slot and audio line out.

**EASY UPGRADE!**  
CM5 HMIs support EA9 series projects\*

**CM5 Series**

**EA9 Series**

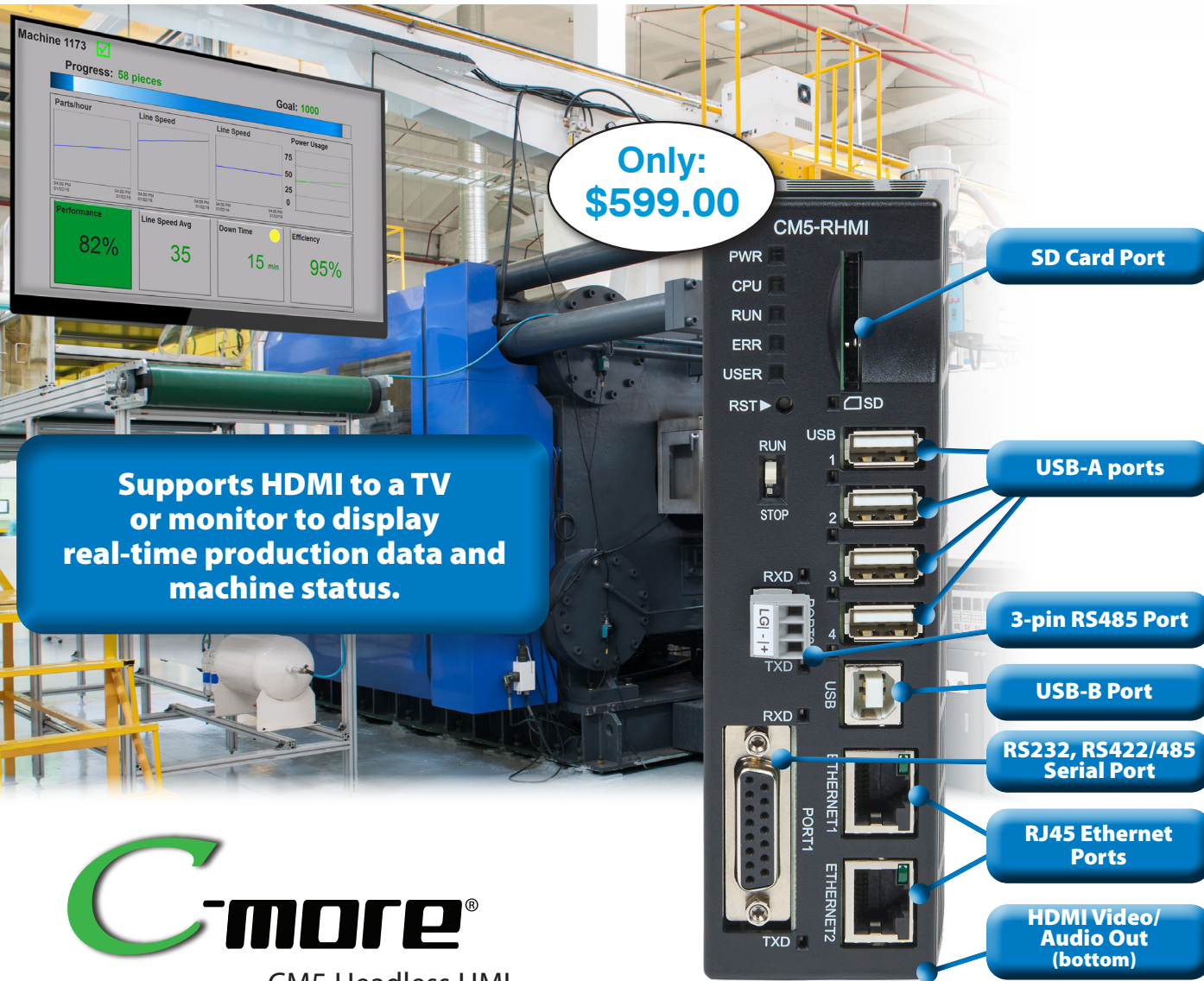
## CM5 vs EA9 Hardware Comparison Chart

Feature	EA9 Series (6in to 15in)	CM5-T4W (4in)	CM5-T7W (7in)	CM5-T10W (10in)	CM5-T12W (12in)	CM5-T15W (15in)	CM5-T22W (22in)
Speed	800MHz	800MHz		1.6GHz quad core			
Memory	26M	45MB		90MB			
Ethernet	1	1		2			
USB Type A	1	1		3			
USB Type B	1			1			
RS-485	1	N/A (USB to RS-485 option)		1			
SD Card	1			1			
HDMI Output	Yes (12 & 15 inch only)			N/A			
Audio Output	1			N/A (USB to audio option)			
EA-AC Support	Yes			N/A			
EA-ECOM Support	Yes (select models)			N/A			
Price	\$688.00-\$2,684.00	\$340.00	\$479.00	\$769.00	\$1,029.00	\$1,609.00	\$1,999.00

\*CM5 HMIs support all projects created for the EA9 HMI series using v6.73 or later



# Expand Your Audience for Less!



Only:  
**\$599.00**

**Supports HDMI to a TV or monitor to display real-time production data and machine status.**

**C-more®**  
CM5 Headless HMI

HMIs are no longer confined to the enclosure door! With the C-more CM5-RHMI headless HMI you can display your factory floor data how and where you choose. The CM5-RHMI has all the powerful functionality of the C-more CM5 touch panel HMIs, without display size restrictions.

This HDMI-enabled device works with televisions, monitors, projectors, and most any other HDMI display device of any size to display real-time operational data or messages. The integrated USB ports allow support for industrial touch screen monitor displays that support USB interface or USB mouse operations. The two serial ports and two 10/100 Base-T Ethernet ports provide support for all the major protocols and enable easy connections to multiple devices simultaneously.

- All the functionality of a C-more CM5 Touch Panel without the display size limitation
- HDMI Video/Audio output with multiple resolutions
  - VGA 640x480, SD 720x480, XGA 1024x768, HD 1280x720, FHD 1920x1080 screen resolutions
  - Audio; Use USB to audio adapter (not included)
- Compatible with most HID compatible resistive and pCap monitors
  - The USB A port allows support for most industrial touch screen monitors in the market
- Multiple connections
  - Ethernet and RS-232/422/485 serial ports support programming and device connections
  - USB-B port for programming, monitoring and configuration
  - USB-A port for USB HID devices such as USB hub, pen drives, touch screen displays, keyboard, mouse and bar-code scanners
  - SD card slot for log files, project memory or graphic media
- 90MB of user memory
- Supports C-more CM5 projects and converts EA9-RHMI project to CM5



**Use HDMI displays up to FHD 1920x1080 or no local display at all if you prefer to use your PC or mobile device.**

## Keep Your Personnel Aware of Critical Events No Matter Where They Are

The Event Manager within the C-more programming software goes beyond simple alarm and message functions and allows C-more to act based on random events like changing tag values, or periodic events like day-of-week, time-of-day, or even based on a screen change. The actions can include setting a tag value, copying tag data between tags, changing the screen, capturing a screen, playing a sound file, even sending e-mail (including embedded tag data, screen captures, or PLC log files).

With the CM5-RHMI this critical event data isn't restricted to a display on an enclosure in the factory somewhere, but it can be displayed in the board room, lunch room, or any other location you decide to ensure complete awareness around your facility.

You can also skip the local display entirely by using the remote access feature. Remote access is available from any windows PC (web browser) or on Apple iOS and Android smartphones and tablets when using the C-more Remote HMI mobile app.

**FREE C-more Remote HMI App**

Available on the  
**App Store**

**See your factory floor data anywhere, anytime. Available now!**

GET IT ON  
**Google play**

Available at  
**amazon**





# With Almost 1/2 Million Sold, C-more has Become an Industry Favorite for Affordable HMIs

C-more HMIs are designed to give you one of the best costs of ownership, considering initial price, features, ease of use, reliability, and free award winning technical support.

We continue to improve hardware and software features, and perhaps this is why more and more people find that C-more has what it takes to meet their HMI needs. But don't just take our word for it, below are some of the reviews we have received from customers regarding the C-more HMI line. Visit our website ([www.automationdirect.com](http://www.automationdirect.com)) if you'd like to read all the reviews that current C-more customers have submitted.



*"All the industry standard features and communication drivers included in this package. Excellent value!"*

Steven - ENDERBY, BC

*"Best value on the market and very adaptable for different comms and applications."*

Donnie - LATHROP, MO

*"I love the remote access and data logging features. Simple to set up and easy to use. Programming interface is simple and intuitive. It is a pleasure to work with the customer service representatives. Little to no wait and they really know their products. Easier to use, lower price and more features than the other manufacturers' HMI products that I have used."*

Dave - VERSAILLES, KY

*"I've used C-More products for years to include EA7 and C-More Micro... and they just keep getting better. Love this HMI, nice to tuck it away in a safe space while having viewing and control access from multiple locations. The PC and Phone interfaces work great and really that is what it is all about, good software that works. The purchase that prompted this review was for my home. A solar generator I am setting up for emergency power. Put it in my router closet and is likely the beginning of many more Home Automation projects to come."*

Keith - INDIAN TRAIL, NC

*"These have features that many higher priced units do not have."*

Jim - ANAHEIM, CA

*"Have had to use and understand many different HMI's over the years and the C-more series is by far the most user friendly that I have found. It works naturally well with other AutomationDirect products, but in addition works equally well with other makers' devices."*

Bob - FENTON, MI

*"This thing is amazing. I started out wanting a screen that was all I hoped for to control a pump application. After I got the unit and the C more software I realized that there was an apple store App. Within 15 minutes of plugging it in and without ever cracking the manual open, I had a switch and an indicator on the screen, my phone, and my web browser and each was able to control my application. Clearly I will need to spend some more time to make it pretty but speed to solution? Amazing!!!!"*

Stewart - VALPARAISO, IN

*"Very Robust, Powerful, and Friendly both for engineers as well as maintenance and technicians. I have installed these in many machines, various environments, with zero trouble. Highly recommend."*

Joe - MOUNT ZION, IL

