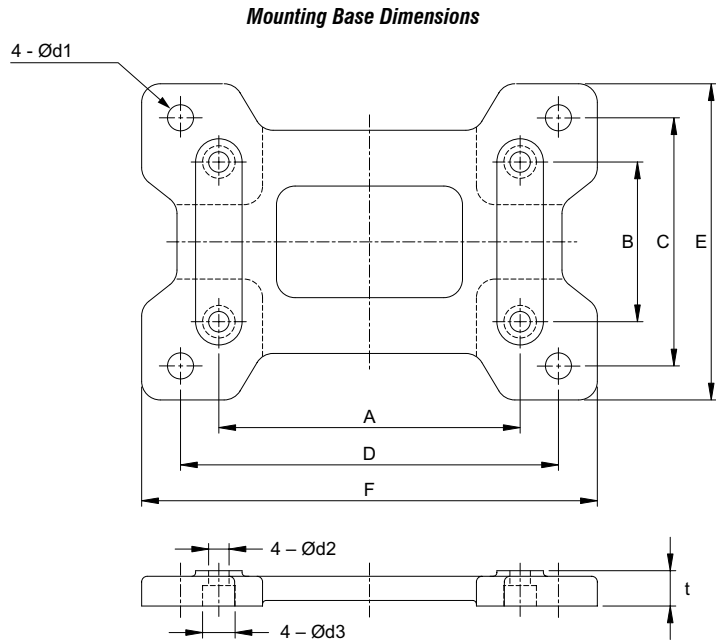


IronHorse® Cast-Iron Worm Gearboxes

Accessories – Mounting Base



IronHorse Worm Gearbox Mounting Base



IronHorse Cast-Iron Worm Gearbox Mounting Bases													
Part Number	Price	Fits Gearbox Numbers	Approx Weight (lb)	Dimensions (in)									
				A	B	C	D	E	F	t	d1	d2	d3
WG-175-BASE	\$19.00	WG-175-xxx-x	4.0	4.19	2.76	4.50	5.75	5.69	7.00	0.69	0.43	0.35	0.55
WG-206-BASE	\$23.00	WG-206-xxx-x	4.8	5.00	2.88	4.69	6.38	5.91	7.76	0.72	0.47	0.43	0.69
WG-237-BASE	\$26.00	WG-237-xxx-x	6.2	5.00	2.88	4.88	7.06	6.22	8.50	0.75	0.47	0.43	0.69
WG-262-BASE	\$31.00	WG-262-xxx-x	7.5	6.38	3.38	5.25	8.00	6.69	9.65	0.75	0.55	0.43	0.69
WG-325-BASE	\$44.00	WG-325-xxx-xx	12	7.50	4.00	6.13	9.50	7.66	11.19	0.88	0.50	0.47	0.71

See our website: www.AutomationDirect.com for complete engineering drawings.

Cast-Iron Worm Gearbox Cross Reference

IronHorse Cast-Iron Worm Gearbox Cross Reference *										
AutomationDirect IronHorse™	WG-175-xxx-		WG-206-xxx-		WG-237-xxx-		WG-262-xxx-		WG-325-xxx-	
	D/L/R	H	D/L/R	H	D/L/R	H	D/L/R	H	D/L/R	H
Alling Lander	17UF	17YF	20UF	20YF	23UF	23YF	26UF	26YF	32UF	32YF
Baldor	F918	HF918	F921	HF921	F924	HF924	F926	HF926	F932	HF932
Boston	F718	HF718	F721	HF721	F724	HF724	F726	HF726	F732	HF732
Browning-Raider	Q175	QH175	Q206	QH206	Q237	QH237	Q262	QH262	Q325	QH325
Dodge-Tigear	Q175	-	Q200	-	-	-	Q262	-	-	-
Falk-Omnibox	1175WBM	1175WBQM	1206WBM	1206WBQM	1238WBM	1238WBQM	1262WBM	1262WBQM	1325WBM	1325WBQM
Grove (new)	BMQ218	HMQ218	BMQ220	HMQ220	BMQ224	HMQ224	BMQ226	HMQ226	BMQ232	HMQ232
Grove (old)	BMQ1175	HMQ1175	BMQ1206	HMQ1206	BWQ1238	HMQ1238	BMQ1262	HMQ1262	BMQ1325	HMQ1325
Leeson	BMQ618	HMQ618	BMQ621	HMQ621	BMQ624	HMQ624	BMQ626	HMQ626	BMQ632	HMQ632
Morse Raider	718F	718SF	721F	721SF	724F	724SF	726F	726SF	732F	732SF
Ohio Gear	BMQ2175	SM2175MQ	BMQ2206	SM2206MQ	BMQ2238	SM2238MQ	BMQ2262	SM2262MQ	BMQ2325	SM2325MQ

* IronHorse Series Gear Drives are designed to be functionally interchangeable with these and many other manufacturer's drives. This chart is intended to be a guide only. Customers should compare the appropriate manufacturer's specifications for exact details regarding ratings and dimensions.