



NEMA Aluminum Worm Gearboxes



IronHorse Aluminum Hollow Bore Worm Gearbox



IronHorse Aluminum Worm Gearbox Accessories

Gearbox Overview

Gearboxes, also known as enclosed gear drives or speed reducers, are mechanical drive components that can control a load at a reduced fixed ratio of the motor speed. The output torque is also increased by the same ratio, while the horsepower remains the same (less efficiency losses.) For example, a 10:1 ratio gearbox outputs approximately the same motor output horsepower, motor speed divided by 10, and motor torque multiplied by 10.

Worm gearboxes contain a worm (gear type) on the input shaft, and a mating gear on the output shaft. Worm gearboxes also change the drive direction by 90°.

IronHorse worm gearboxes are manufactured in an ISO9001 certified plant by one of the leading gearbox manufacturers in the world today. Only the highest quality materials are tested, certified, and used in the manufacturing process. Strict adherence to and compliance with the toughest international and U.S. testing standards and manufacturing procedures assure you the highest quality products.

Aluminum gearboxes feature hollow-bore outputs (hollow all the way through from one side to the other). These gearboxes also utilize C-face mounting interfaces for trouble-free connections to C-face motors. We also offer optional single and double output shafts, output flanges, torque arms, and output covers.

Features

- 10:1 to 100:1 ratios
- Frame sizes 30, 40, 50, 63, and 75mm
- Compatible with NEMA frame motors: 56C, 145TC, and 182/4TC
- Cast aluminum alloy housing for lightweight design
- Hardened worm shaft for increased durability
- Two bearings on input and output shafts (Size 75 gearboxes have tapered roller bearings on the output shaft)
- NEMA motor input flanges
- All units filled with Mobil SHC632 synthetic oil*
- No vent plug or breather needed; maintenance-free reducer
- Double lip oil seals prevent leakage
- Multiple mounting holes for all angle mounts
- Epoxy paint applied to inside and outside of reducer to protect against corrosion
- Hollow output bores with available plug-in output shafts
- Multiple mounting orientation options (see user manual for allowed mounting orientations)
- Single and Double Output Shaft material: S45C
- Single and Double Output Shaft Hardness: HBS220~260

Applications

- Use with electric motors for reducing output speed, increasing torque, changing drive direction, or running two loads from one motor.
- Use for conveyors, packaging machines, rotary tables, etc.



NEMA Aluminum Worm Gearboxes

IronHorse Aluminum Worm Gearbox Specifications – 30, 40, 50, & 63 mm Frames

Part Number	Price	Nominal / Actual Ratio	Output RPM @ 1750 RPM Input	Nominal Motor HP ¹ @1800 rpm	NEMA Motor Frame	Output Type ²	Center Distance ³ (mm)	Overhung Load ⁴ (lb)	Output Shaft Thrust Load (lb)	Efficiency (%)	Approx Weight (lb)	Maximum Ratings @ 1750 RPM Input			Maximum Input Speed (rpm)	Maximum Backlash (arc-minute)
												Mechanical ⁵				
												Input Power (hp)	Output Power (hp)	Output Torque (lb-in)		
WGA-30M-010-H1	\$118.00	10:1	175	0.5	56C	H	30	142	31	80	3	0.54	0.43	150	2,000	28.8
WGA-30M-020-H1	\$118.00	20:1	88	0.25				179	40	72		0.30	0.22	150		28.2
WGA-30M-030-H1	\$118.00	30:1	58	0.25				205	45	62		0.25	0.16	177		28.8
WGA-30M-040-H1	\$118.00	40:1	44	0.2				225	50	55		0.19	0.10	150		28.2
WGA-30M-060-H1	\$118.00	60:1	29	0.12				259	54	46		0.12	0.06	142		25.8
WGA-40M-010-H1	\$148.00	10:1	175	1	56C	H	40	279	60	83	5	1.15	0.95	354	2,000	24.0
WGA-40M-020-H1	\$148.00	20:1	88	0.5				350	76	78		0.61	0.48	345		
WGA-40M-030-H1	\$148.00	30:1	58	0.5				403	87	68		0.53	0.36	389		
WGA-40M-040-H1	\$148.00	40:1	44	0.33				441	96	65		0.39	0.25	363		
WGA-40M-060-H1	\$148.00	60:1	29	0.25				507	110	56		0.25	0.14	319		21.6
WGA-40M-080-H1	\$148.00	80:1	22	0.12	556	121	50	0.19	0.10	283						
WGA-40M-100-H1	\$148.00	100:1	17.5	0.12	595	130	47	0.15	0.07	257						
WGA-50M-010-H1	\$203.00	10:1	175	2	56C	H	50	406	83	84	8	2.06	1.73	628	2,000	19.2
WGA-50M-020-H1	\$203.00	20:1	88	1				510	104	78		1.13	0.88	646		17.4
WGA-50M-030-H1	\$203.00	30:1	58	0.75				586	120	70		0.95	0.67	734		19.2
WGA-50M-040-H1	\$203.00	40:1	44	0.75				643	132	65		0.70	0.46	664		17.4
WGA-50M-060-H1	\$203.00	60:1	29	0.33				739	151	57		0.46	0.26	602		16.2
WGA-50M-080-H1	\$203.00	80:1	22	0.33	810	166	50	0.38	0.19	566						
WGA-50M-100-H1	\$203.00	100:1	17.5	0.25	866	179	46	0.28	0.13	487						
WGA-63M-010-H1	\$261.00	10:1	175	3	56C	H	63	510	108	86	13	3.67	3.16	1141	2,000	17.4
WGA-63M-010-H2	\$261.00	10:1	175	3	145TC			510	108	86		3.67	3.16	1141		
WGA-63M-020-H1	\$261.00	20:1	88	2	56C			641	137	80		2.04	1.63	1186		16.2
WGA-63M-020-H2	\$261.00	20:1	88	2	145TC			641	137	80		2.04	1.63	1186		
WGA-63M-030-H1	\$261.00	30:1	58	1.5	56C			736	156	73		1.76	1.28	1416		17.4
WGA-63M-040-H1	\$261.00	40:1	44	1				807	172	70		1.26	0.88	1274		16.2
WGA-63M-060-H1	\$261.00	60:1	29	0.75				928	197	59		0.86	0.51	1141		13.8
WGA-63M-080-H1	\$261.00	80:1	22	0.5				1017	217	53		0.67	0.36	1071		
WGA-63M-100-H1	\$261.00	100:1	18	0.5				1088	234	48		0.57	0.27	1035		

1) Nominal Motor HP is the highest HP 1800 rpm motor to be used with the gearbox under conditions of 1.0 service factor. Gearbox input power capacity decreases as motor speed decreases and as service factor increases.

2) Output Type: H = Hollow Bore.

3) The Center Distance is the distance between the centerlines of the input and output shafts/bore; serves as the gearbox frame size.

4) Overhung Load ratings are for forces perpendicular to the output shaft and located at the shaft midpoint, such as from a gear, pulley, or sprocket with a belt or chain. Divide OHL ratings by the applicable OHL K factors shown separately in the Selection Factors tables. OHL ratings should also be divided by applicable service factors.

5) Maximum Mechanical Ratings are limits based on strength and durability of gearbox components; applicable when operating time is short and stopped time is greater than or equal to operating time. These ratings are applicable for 1.0 service factor loads, and may require modification depending upon characteristics of the applicable driven loads. Refer to the "Service Factors" table for more information.



NEMA Aluminum Worm Gearboxes

IronHorse Aluminum Worm Gearbox Specifications – 75 mm Frames

Part Number	Price	Nominal / Actual Ratio	Output RPM @ 1750 RPM Input	Nominal Motor HP ¹ @1800 rpm	NEMA Motor Frame	Output Type ²	Center Distance ³ (mm)	Overhung Load ⁴ (lb)	Output Shaft Thrust Load (lb)	Efficiency (%)	Approx Weight (lb)	Maximum Ratings @ 1750 RPM Input			Maximum Input Speed (rpm)	Maximum Backlash (arc-minute)
												Mechanical ⁵				
												Input Power (hp)	Output Power (hp)	Output Torque (lb-in)		
WGA-75M-010-H1	\$380.00	10:1	175	5	56C	H	75	604	128	86	19	5.44	4.68	1717	2,000	16.2
WGA-75M-010-H2	\$380.00	10:1	175	5	145TC			604	128	86		5.44	4.68	1717		
WGA-75M-010-H3	\$380.00	10:1	175	5	182/4TC			604	128	86		5.44	4.68	1717		
WGA-75M-020-H1	\$380.00	20:1	88	3	56C			759	161	79		3.14	2.48	1849		14.4
WGA-75M-020-H2	\$380.00	20:1	88	3	145TC			759	161	79		3.14	2.48	1849		
WGA-75M-030-H1	\$380.00	30:1	58	2	56C			873	185	72		2.48	1.79	2026		
WGA-75M-040-H1	\$380.00	40:1	44	1.5				957	203	68		1.88	1.28	1947	14.4	
WGA-75M-060-H1	\$380.00	60:1	29	1				1099	232	62		1.26	0.78	1770	12.6	
WGA-75M-080-H1	\$380.00	80:1	22	0.75				1205	256	58		0.97	0.56	1672		
WGA-75M-100-H1	\$380.00	100:1	18	0.75	1289			276	52	0.80		0.42	1593			

1) Nominal Motor HP is the highest HP 1800 rpm motor to be used with the gearbox under conditions of 1.0 service factor. Gearbox input power capacity decreases as motor speed decreases and as service factor increases.

2) Output Type: H = Hollow Bore.

3) The Center Distance is the distance between the centerlines of the input and output shafts/bore; serves as the gearbox frame size.

4) Overhung Load ratings are for forces perpendicular to the output shaft and located at the shaft midpoint, such as from a gear, pulley, or sprocket with a belt or chain. Divide OHL ratings by the applicable OHL K factors shown separately in the Selection Factors tables. OHL ratings should also be divided by applicable service factors.

5) Maximum Mechanical Ratings are limits based on strength and durability of gearbox components; applicable when operating time is short and stopped time is greater than or equal to operating time. These ratings are applicable for 1.0 service factor loads, and may require modification depending upon characteristics of the applicable driven loads. Refer to the "Service Factors" table for more information.

Gearbox Selection Factors

Overhung Load K Factors for Various Drive Types	
Chain & Sprocket	1.00
Gear	1.25
V-belt	1.50
Flat Belt	2.50
Variable Pitch Belt	3.50

Divide gearbox OHL ratings by the applicable OHL K factors.

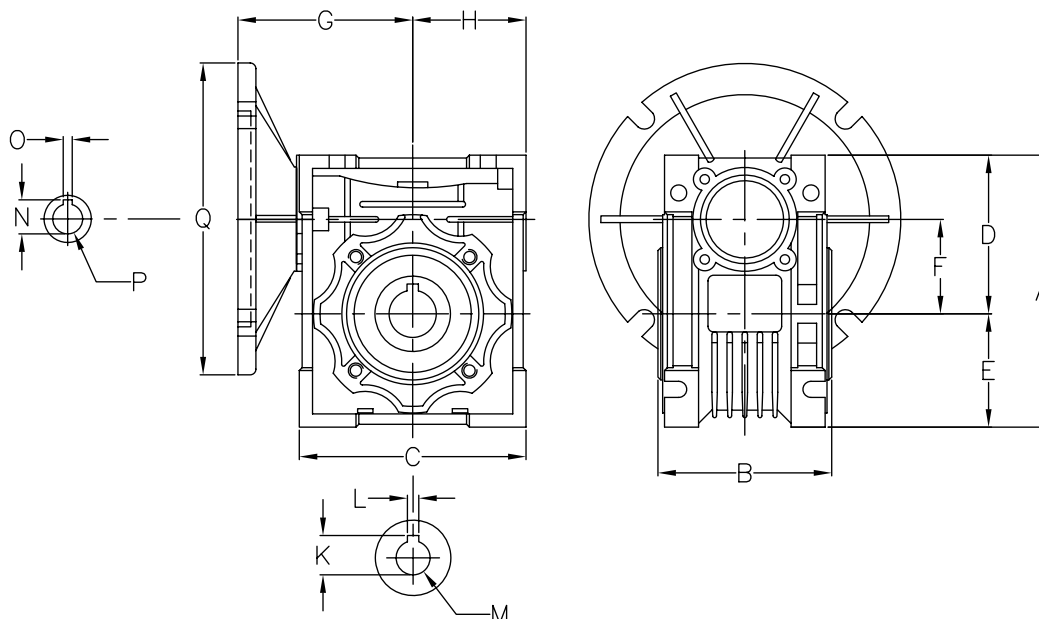
Service Factors for Selecting Gearboxes (when used with electric motors)				
Service Continuity (per day)	Load Characteristics			
	Uniform	Moderate Shock*	Heavy Shock*	Extreme Shock*
Occasional 1/2 hour	1.00	1.00	1.00	1.25
Less than 3 hours	1.00	1.00	1.25	1.50
3-10 hours	1.00	1.25	1.50	1.75
More than 10 hours	1.25	1.50	1.75	2.00

* Shock results from sudden increases in the torque demand of the load, such as: sudden stopping, restarting, and/or reversing; significantly heavy loads dropped onto a moving conveyor; impact loads such as punch press operations.

Depending upon the load characteristics, divide the gearbox HP, Overhung Load, and Maximum Mechanical Capacity ratings by the applicable service factor.



NEMA Aluminum Worm Gearboxes



Dimensions (inches) – IronHorse Aluminum Worm Gearboxes

Part Number	NEMA Motor Face	A	B	C	D	E	F	G	H	Output Bore			Input Shaft			ØQ
										K	L	ØM	N	O	ØP	
WGA-30M-xxx-H1	56C	3.82	2.48	3.15	2.24	1.57	1.18	3.19	1.57	0.720	0.187	0.625	0.73	0.19	0.625	6.50
WGA-40M-xxx-H1		4.78	3.07	3.94	2.81	1.97	1.57	3.18	1.97	0.840	0.187	0.750	0.71	0.19	0.625	6.50
WGA-50M-xxx-H1		5.67	3.62	4.72	3.31	2.36	1.97	3.58	2.36	1.110	0.250	1.000	0.71	0.19	0.625	6.50
WGA-63M-xxx-H1		6.87	4.42	5.69	4.00	2.87	2.48	4.06	2.84	1.250	0.250	1.125	0.71	0.19	0.625	6.50
WGA-63M-xxx-H2	145TC	6.87	4.42	5.69	4.00	2.87	2.48	4.06	2.84	1.250	0.250	1.125	0.97	0.19	0.875	6.50
WGA-75M-xxx-H1	56C	8.07	4.72	6.77	4.69	3.39	2.95	4.68	3.39	1.375	0.250	1.250	0.71	0.19	0.625	6.50
WGA-75M-xxx-H2	145TC	8.07	4.72	6.77	4.69	3.39	2.95	4.68	3.39	1.375	0.250	1.250	1.24	0.25	1.125	6.50
WGA-75M-xxx-H3	182/4TC	8.07	4.72	6.77	4.69	3.39	2.95	4.68	3.39	1.375	0.250	1.250	1.24	0.25	1.125	8.97



See our website: www.AutomationDirect.com for complete engineering drawings.

IronHorse NEMA Aluminum Worm Gearbox Output Shaft Kits

Part Number	Price	Description	Typical Photo
WGA-30M-ACC3	\$14.00	IronHorse gearbox single output shaft, 0.625in. For use with aluminum WGA-30M series gearboxes. (3) keys, (1) spacer and (1) retaining ring included.	
WGA-40M-ACC3	\$16.00	IronHorse gearbox single output shaft, 0.75in. For use with aluminum WGA-40M series gearboxes. (3) keys, (1) spacer and (1) retaining ring included.	
WGA-50M-ACC3	\$19.00	IronHorse gearbox single output shaft, 1in. For use with aluminum WGA-50M series gearboxes. (3) keys, (1) spacer and (1) retaining ring included.	
WGA-63M-ACC3	\$25.00	IronHorse gearbox single output shaft, 1.125in. For use with aluminum WGA-63M series gearboxes. (3) keys, (1) spacer and (1) retaining ring included.	
WGA-75M-ACC3	\$33.00	IronHorse gearbox single output shaft, 1.25in. For use with aluminum WGA-75M series gearboxes. (3) keys, (1) spacer and (1) retaining ring included.	
WGA-30M-ACC4	\$19.00	IronHorse gearbox double output shaft, 0.625in. For use with aluminum WGA-30M series gearboxes. (4) keys, (2) spacers and (2) retaining rings included.	
WGA-40M-ACC4	\$22.00	IronHorse gearbox double output shaft, 0.75in. For use with aluminum WGA-40M series gearboxes. (4) keys, (2) spacers and (2) retaining rings included.	
WGA-50M-ACC4	\$25.00	IronHorse gearbox double output shaft, 1in. For use with aluminum WGA-50M series gearboxes. (4) keys, (2) spacers and (2) retaining rings included.	
WGA-63M-ACC4	\$34.00	IronHorse gearbox double output shaft, 1.125in. For use with aluminum WGA-63M series gearboxes. (4) keys, (2) spacers and (2) retaining rings included.	
WGA-75M-ACC4	\$42.00	IronHorse gearbox double output shaft, 1.25in. For use with aluminum WGA-75M series gearboxes. (4) keys, (2) spacers and (2) retaining rings included.	



Aluminum Worm Gearbox Accessories

IronHorse Aluminum Worm Gearbox Accessories			
Part Number	Price	Description	Typical Photo
<u>WGA-30M-ACC1</u>	\$11.00	Output flange, for aluminum WGA-30M series gearboxes. Includes (4) mounting screws.	
<u>WGA-40M-ACC1</u>	\$12.00	Output flange, for aluminum WGA-40M series gearboxes. Includes (4) mounting screws.	
<u>WGA-50M-ACC1</u>	\$13.00	Output flange, for aluminum WGA-50M series gearboxes. Includes (4) mounting screws.	
<u>WGA-63M-ACC1</u>	\$17.00	Output flange, for aluminum WGA-63M series gearboxes. Includes (8) mounting screws.	
<u>WGA-75M-ACC1</u>	\$26.00	Output flange, for aluminum WGA-75M series gearboxes. Includes (8) mounting screws.	
<u>WGA-30M-ACC2</u>	\$14.00	Torque arm, for aluminum WGA-30M series gearboxes. Includes (4) mounting screws.	
<u>WGA-40M-ACC2</u>	\$16.00	Torque arm, for aluminum WGA-40M series gearboxes. Includes (4) mounting screws.	
<u>WGA-50M-ACC2</u>	\$17.00	Torque arm, for aluminum WGA-50M series gearboxes. Includes (4) mounting screws.	
<u>WGA-63M-ACC2</u>	\$27.00	Torque arm, for aluminum WGA-63M series gearboxes. Includes (8) mounting screws.	
<u>WGA-75M-ACC2</u>	\$46.00	Torque arm, for aluminum WGA-75M series gearboxes. Includes (8) mounting screws.	
<u>WGA-30M-ACC5</u>	\$6.00	Output cover, for aluminum WGA-30M series gearboxes. Includes (4) mounting screws.	
<u>WGA-40M-ACC5</u>	\$6.00	Output cover, for aluminum WGA-40M series gearboxes. Includes (4) mounting screws.	
<u>WGA-50M-ACC5</u>	\$11.00	Output cover, for aluminum WGA-50M series gearboxes. Includes (4) mounting screws.	
<u>WGA-63M-ACC5</u>	\$11.00	Output cover, for aluminum WGA-63M series gearboxes. Includes (4) mounting screws.	
<u>WGA-75M-ACC5</u>	\$11.00	Output cover, for aluminum WGA-75M series gearboxes. Includes (4) mounting screws.	

All accessories fit both NEMA and IEC input types.



IronHorse® Worm Gearboxes

Gearbox Selection Example (continued)

(Refer to the specifications tables for gearbox specifications, service factors, and K factors.)

Load requirements: Conveyor to run 10 hours/day; moderate shock loading; driven by V-belt @ approx 20 rpm; requires 2700 in-lb of torque. Motor speed 1725 rpm (1800 rpm nominal).

7) Use the gearbox overhung load ratings from the specifications table to determine the minimum allowable pulley diameters.

Select gearbox with **Overhung Load rating > overhung load force**:

Gearbox required OHL rating = (gearbox real torque)(K)(SF)/(gearbox pulley diameter / 2)

Minimum gearbox pulley diameter = (T)(K)(SF)(2)/(OHL rating)

Conveyor pulley diameter = (gearbox pulley diameter)(pulley ratio)

For 10:1, WG-175-010-x gearbox:

Minimum gearbox pulley diameter = (312.86 in-lb)(1.5)(1.25)(2)/(650 lb) = 1.8" [use 2"]

Conveyor pulley diameter = (2")(8.63) = **17.26" [17.26" pulley size is prohibitively large]**

Determine pulley sizes and OHL for next larger gearbox ratio.

For 15:1, WG-206-015-x gearbox:

Minimum gearbox pulley diameter = (469.57 in-lb)(1.5)(1.25)(2)/(700 lb) = 2.5" [use 2.5"]

Conveyor pulley diameter = (2.5")(5.75) = 14.38" [use 14.4"]

Select **WG-206-015-x gearbox, 2.5" gearbox pulley, and 14.4" conveyor pulley.**

For 20:1, WG-206-020-x gearbox:

N/A – larger ratio of same frame size GB is same price, yet provides lower efficiency and power characteristics

For 30:1, WGA-63M-030-H1 gearbox:

Minimum gearbox pulley diameter = (937.50 in-lb)(1.5)(1.25)(2)/(736 lb) = 4.78" [use 5"]

Conveyor pulley diameter = (5")(2.88) = 14.40" [use 14.4"]

N/A – WGA-63M & WG-325 gearboxes costs more than WG-206

For 40:1, N/A – WG-325-xxx gearboxes cost more than WG-206 at any ratio

For 60:1, N/A – WG-325-xxx gearboxes cost more than WG-206 at any ratio

8) **Check results** against original speed and torque requirements:

a) Conveyor speed = (motor speed) / (gearbox ratio)(pulley ratio) = (1725 rpm) / (15)(14.4"/2.5") = 20 rpm

b) Maximum real torque available at conveyor = (gearbox thermal torque)(pulley ratio) = (673 in-lb)(14.4"/2.5") = 3876 in-lb

c) Maximum design torque available at conveyor = (gearbox mechanical torque)(pulley ratio) / (service factor)
= (1002 in-lb)(14.4"/2.5") / 1.25 = 4617 in-lb

The speed is correct as required, and both maximum torque values are greater than the 2700 in-lb required by the load.

9) **Select a motor** and check torque transmitted to the load:

From the gearbox spec tables, WG-206-015-x efficiency = 85%.

maximum thermal input power = 1.40 hp

maximum mechanical input power @ 1.0 SF = 2.09 hp

maximum mechanical input power @ 1.25 SF = (rated max mechanical input power) / (SF) = 2.09 hp / 1.25 = 1.67 hp

maximum allowable motor power = 1.40 hp; select nominal 1hp motor

Select **1hp motor**, and check for adequate torque at the load:

Torque = Power / Speed [conversion factor: (1hp) = (63,025 in-lb-rpm)]

Torque load = (63,025 in-lb-rpm / hp)(gearbox input hp)(gearbox efficiency) / (motor rpm / (gearbox ratio)(pulley ratio))
= (63,025)(1)(0.85) / (1725 / (15/1)(14.4/2.5)) = **2683 in-lb [insufficient torque at load]**

This torque value is less than the 2700 in-lb required by the load.

So, select and check the next larger nominal motor size, which is 1-1/2 hp.

Since the 206 frame size 15 ratio gearboxes do not meet the 1-1/2 hp thermal rating, choose the WG-237-015-x gearbox.

Select **1-1/2 hp motor** and **WG-237-015-x gearbox**, and check for adequate torque:

WG-237-015-x gearbox efficiency = 84%

maximum thermal input power = 1.55 hp

maximum mechanical input power @ 1.25 SF = 2.64 hp / 1.25 = 2.11 hp

maximum allowable motor power = 1.55 hp; select nominal 1-1/2 hp motor

gearbox ratio is still 15:1, and OHL rating is increased to 900 lb, so the previous pulley calculations [step 7] remain sufficient
[smaller pulleys can be calculated and selected for this gearbox, if desired]

Tload = (63,025 in-lb-rpm/hp) (1.5hp) (84%) / (1725 rpm / (15/1)(14.4/2.5)) = 3977 in-lb > 2700 in-lb; sufficient torque at load

Final gearbox and motor selection: 1-1/2 hp motor WG-237-015-x gearbox

IronHorse® Worm Gearboxes

Gearbox Selection Example (continued)

(Refer to the specifications tables for gearbox specifications, service factors, and K factors.)

[Load requirements: Conveyor to run 10 hours/day; moderate shock loading; driven by V-belt @ approx 20 rpm; requires 2700 in-lb of torque. Motor speed 1725 rpm (1800 rpm nominal).]

7) Use the gearbox overhung load ratings from the specifications table to determine the minimum allowable pulley diameters.

Select gearbox with **Overhung Load rating > overhung load force**:

Gearbox required OHL rating = (gearbox real torque)(K)(SF)/(gearbox pulley diameter / 2)

Minimum gearbox pulley diameter = (T)(K)(SF)(2)/(OHL rating)

Conveyor pulley diameter = (gearbox pulley diameter)(pulley ratio)

For 10:1, WG-175-010-x gearbox:

Minimum gearbox pulley diameter = (312.86 in-lb)(1.5)(1.25)(2)/(650 lb) = 1.8" [use 2"]

Conveyor pulley diameter = (2")(8.63) = ~~17.26"~~ **[17.26" pulley size is prohibitively large]**

Determine pulley sizes and OHL for next larger gearbox ratio.

For 15:1, WG-206-015-x gearbox:

Minimum gearbox pulley diameter = (469.57 in-lb)(1.5)(1.25)(2)/(700 lb) = 2.5" [use 2.5"]

Conveyor pulley diameter = (2.5")(5.75) = 14.38" [use 14.4"]

Select **WG-206-015-x gearbox, 2.5" gearbox pulley, and 14.4" conveyor pulley.**

For 20:1, WG-206-020-x gearbox:

N/A – larger ratio of same frame size GB is same price, yet provides lower efficiency and power characteristics

For 30:1, WGA-63M-030-H1 gearbox:

Minimum gearbox pulley diameter = (937.50 in-lb)(1.5)(1.25)(2)/(736 lb) = 4.78" [use 5"]

Conveyor pulley diameter = (5")(2.88) = 14.40" [use 14.4"]

N/A – WGA-63M & WG-325 gearboxes costs more than WG-206

For 40:1, N/A – WG-325-xxx gearboxes cost more than WG-206 at any ratio

For 60:1, N/A – WG-325-xxx gearboxes cost more than WG-206 at any ratio

8) **Check results** against original speed and torque requirements:

a) Conveyor speed = (motor speed) / (gearbox ratio)(pulley ratio) = (1725 rpm) / (15)(14.4"/2.5") = 20 rpm

b) Maximum real torque available at conveyor = (gearbox thermal torque)(pulley ratio) = (673 in-lb)(14.4"/2.5") = 3876 in-lb

c) Maximum design torque available at conveyor = (gearbox mechanical torque)(pulley ratio) / (service factor)

= (1002 in-lb)(14.4"/2.5") / 1.25 = 4617 in-lb

The speed is correct as required, and both maximum torque values are greater than the 2700 in-lb required by the load.

9) **Select a motor** and check torque transmitted to the load:

From the gearbox spec tables, WG-206-015-x efficiency = 85%.

maximum thermal input power = 1.40 hp

maximum mechanical input power @ 1.0 SF = 2.09 hp

maximum mechanical input power @ 1.25 SF = (rated max mechanical input power) / (SF) = 2.09 hp / 1.25 = 1.67 hp

maximum allowable motor power = 1.40 hp; select nominal 1hp motor

Select **1hp motor**, and check for adequate torque at the load:

Torque = Power / Speed **[conversion factor: (1hp) = (63,025 in-lb-rpm)]**

Torque load = (63,025 in-lb-rpm / hp)(gearbox input hp)(gearbox efficiency) / (motor rpm / (gearbox ratio)(pulley ratio))

= (63,025)(1)(0.85) / (1725 / (15/1)(14.4/2.5)) = ~~2683 in-lb~~ **[insufficient torque at load]**

This torque value is less than the 2700 in-lb required by the load.

So, select and check the next larger nominal motor size, which is 1-1/2 hp.

Since the 206 frame size 15 ratio gearboxes do not meet the 1-1/2 hp thermal rating, choose the WG-237-015-x gearbox.

Select **1-1/2 hp motor and WG-237-015-x gearbox**, and check for adequate torque:

WG-237-015-x gearbox efficiency = 84%

maximum thermal input power = 1.55 hp

maximum mechanical input power @ 1.25 SF = 2.64 hp / 1.25 = 2.11 hp

maximum allowable motor power = 1.55 hp; select nominal 1-1/2 hp motor

gearbox ratio is still 15:1, and OHL rating is increased to 900 lb, so the previous pulley calculations [step 7] remain sufficient

[smaller pulleys can be calculated and selected for this gearbox, if desired]

Tload = (63,025 in-lb-rpm/hp) (1.5hp) (84%) / (1725 rpm / (15/1)(14.4/2.5)) = 3977 in-lb > 2700 in-lb; sufficient torque at load

Final gearbox and motor selection: 1-1/2 hp motor WG-237-015-x gearbox