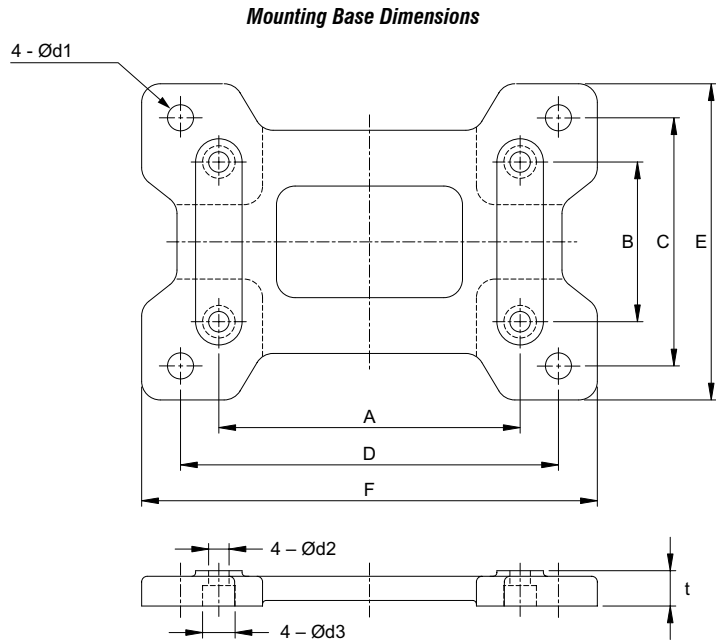


# IronHorse® Cast-Iron Worm Gearboxes

## Accessories – Mounting Base



IronHorse Worm Gearbox Mounting Base



IronHorse Cast-Iron Worm Gearbox Mounting Bases													
Part Number	Price	Fits Gearbox Numbers	Approx Weight (lb)	Dimensions (in)									
				A	B	C	D	E	F	t	d1	d2	d3
<b>WG-175-BASE</b>	\$19.00	WG-175-xxx-x	4.0	4.19	2.76	4.50	5.75	5.69	7.00	0.69	0.43	0.35	0.55
<b>WG-206-BASE</b>	\$23.00	WG-206-xxx-x	4.8	5.00	2.88	4.69	6.38	5.91	7.76	0.72	0.47	0.43	0.69
<b>WG-237-BASE</b>	\$26.00	WG-237-xxx-x	6.2	5.00	2.88	4.88	7.06	6.22	8.50	0.75	0.47	0.43	0.69
<b>WG-262-BASE</b>	\$31.00	WG-262-xxx-x	7.5	6.38	3.38	5.25	8.00	6.69	9.65	0.75	0.55	0.43	0.69
<b>WG-325-BASE</b>	\$44.00	WG-325-xxx-xx	12	7.50	4.00	6.13	9.50	7.66	11.19	0.88	0.50	0.47	0.71

See our website: [www.AutomationDirect.com](http://www.AutomationDirect.com) for complete engineering drawings.

## Cast-Iron Worm Gearbox Cross Reference

IronHorse Cast-Iron Worm Gearbox Cross Reference *										
AutomationDirect IronHorse™	WG-175-xxx-		WG-206-xxx-		WG-237-xxx-		WG-262-xxx-		WG-325-xxx-	
	D/L/R	H	D/L/R	H	D/L/R	H	D/L/R	H	D/L/R	H
<b>Alling Lander</b>	17UF	17YF	20UF	20YF	23UF	23YF	26UF	26YF	32UF	32YF
<b>Baldor</b>	F918	HF918	F921	HF921	F924	HF924	F926	HF926	F932	HF932
<b>Boston</b>	F718	HF718	F721	HF721	F724	HF724	F726	HF726	F732	HF732
<b>Browning-Raider</b>	Q175	QH175	Q206	QH206	Q237	QH237	Q262	QH262	Q325	QH325
<b>Dodge-Tigear</b>	Q175	-	Q200	-	-	-	Q262	-	-	-
<b>Falk-Omnibox</b>	1175WBM	1175WBQM	1206WBM	1206WBQM	1238WBM	1238WBQM	1262WBM	1262WBQM	1325WBM	1325WBQM
<b>Grove (new)</b>	BMQ218	HMQ218	BMQ220	HMQ220	BMQ224	HMQ224	BMQ226	HMQ226	BMQ232	HMQ232
<b>Grove (old)</b>	BMQ1175	HMQ1175	BMQ1206	HMQ1206	BWQ1238	HMQ1238	BMQ1262	HMQ1262	BMQ1325	HMQ1325
<b>Leeson</b>	BMQ618	HMQ618	BMQ621	HMQ621	BMQ624	HMQ624	BMQ626	HMQ626	BMQ632	HMQ632
<b>Morse Raider</b>	718F	718SF	721F	721SF	724F	724SF	726F	726SF	732F	732SF
<b>Ohio Gear</b>	BMQ2175	SM2175MQ	BMQ2206	SM2206MQ	BMQ2238	SM2238MQ	BMQ2262	SM2262MQ	BMQ2325	SM2325MQ

\* IronHorse Series Gear Drives are designed to be functionally interchangeable with these and many other manufacturer's drives. This chart is intended to be a guide only. Customers should compare the appropriate manufacturer's specifications for exact details regarding ratings and dimensions.