

BRYANT® Wiring Devices – Accessories

Features

Nylon Angle Adapter

- Converts 20A and 30A nylon locking plugs and connectors into space saving angle devices
- Adapters permit wire to exit parallel to the receptacle; eliminating space needed for wire to bend

Weather Protective Boots; 5200 Series

- For use with Bryant 15 and 20 Amp straight blade plugs and connectors and 15 Amp locking plug and connectors
- Help prevent moisture, dust and other contaminants from infiltrating plugs and connectors
- Available in high visibility yellow or standard black
- Thermoplastic elastomer construction
- Excellent ozone and weather resistance
- Resistant to deterioration by oils and heat
- IP55 Suitability when installed and used properly with plug and connector body combinations
- Connector sealing ring provides extra protection when plug and connector are not mated
- Ribbed exterior provides firm grip

Weather Protective Boots; 7200 Series

- For use with Bryant 20 and 30 Amp locking plugs and connectors
- Help prevent moisture, dust and other contaminants from infiltrating plugs and connectors
- Chemical/UV resistant construction
- Available in high visibility yellow or standard black
- Ribbed exterior provides firm grip
- Sealing ring seals connector when not mated
- For use with Bryant Triple Gripper® 20 and 30 Amp nylon plugs and connectors
- IP55 Suitability when installed and used properly with plug and connector body combinations

Stainless Steel Cover Plates

Approvals

- UL File E31999*
- CSA Certified 18416*



*Approvals for stainless steel receptacle plates only.

Wiring Devices Accessories		
Part Number	Description	Price
Receptacle Plates		
SS8	Bryant cover plate, for use with 15A and 20A duplex receptacles in 1 gang electrical boxes.	\$2.75
SS7	Bryant cover plate, for use with 15A and 20A single receptacles in 1 gang electrical boxes.	\$3.25
SS723	Bryant cover plate, for use with 30A single receptacles in 1 gang electrical boxes.	\$6.00
SS703	Bryant cover plate, for use with 30A single receptacles in 2 gang electrical boxes.	\$9.50
SS720	Bryant cover plate, for use with 20A and 30A single receptacles in 1 gang electrical boxes.	\$4.75
Angle Adapter*		
70204ANA	Bryant 90 degree angle adapter, black. For use with 20A and 30A locking plugs and connectors.	\$25.50
Weather Boots*		
5200BP	Bryant weather boot, high visibility yellow. For use with 15A locking, 15A straight blade, and 20A straight blade plugs.	\$16.50
5200BC	Bryant weather boot, high visibility yellow. For use with 15A locking, 15A straight blade, and 20A straight blade connectors.	\$19.00
5200BSR	Bryant weather boot cap, high visibility yellow. For use with 5200BC boot.	\$23.50
5200BPB	Bryant weather boot, black. For use with 15A locking, 15A straight blade, and 20A straight blade plugs.	\$16.50
5200BCB	Bryant weather boot, black. For use with 15A locking, 15A straight blade, and 20A straight blade connectors.	\$19.50
5200BSRB	Bryant weather boot cap, black. For use with 5200BCB boot.	\$23.50
72002BC	Bryant weather boot, high visibility yellow. For use with 20A and 30A locking connectors.	\$30.00
72002BP	Bryant weather boot, high visibility yellow. For use with 20A and 30A locking plugs.	\$24.00
72002BPB	Bryant weather boot, black. For use with 20A and 30A locking plugs, chemical and ultraviolet resistant thermoplastic elastomer construction, black.	\$24.00
72002BCB	Bryant weather boot, black. For use with 20A and 30A locking connectors.	\$25.00

*Angle adapter and weather boots are not UL listed or CSA certified.



**Stainless Steel
Receptacle Plates**



**Angle Adapter
70204ANA**

BRYANT® Wiring Devices – Accessories



72002BC
Weather Boot

Note: Connectors shown on above installations are not included and are purchased separately.



Angle Adapter 70204ANA

+



=



+



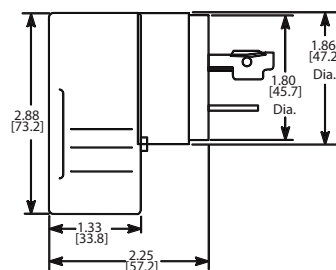
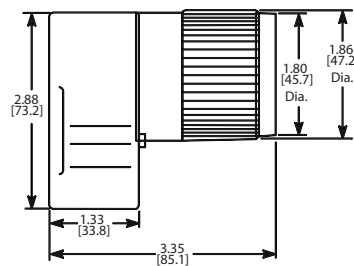
=



Dimensions

inches [mm]

Angle Adapter



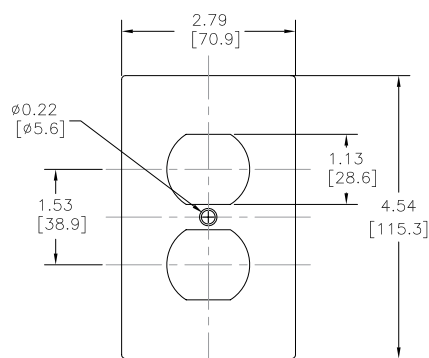
Angle Adapter

Wiring Devices – Accessories Drawings

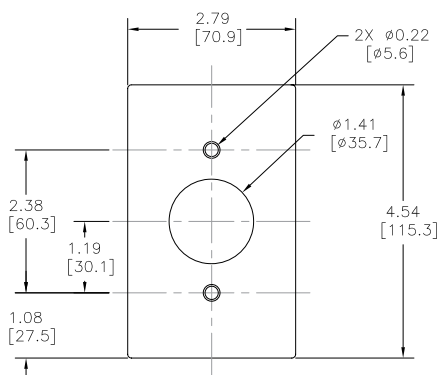
Dimensions

inches [mm]

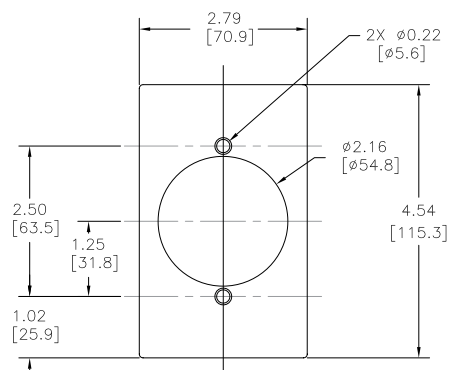
Stainless Steel Cover Plates



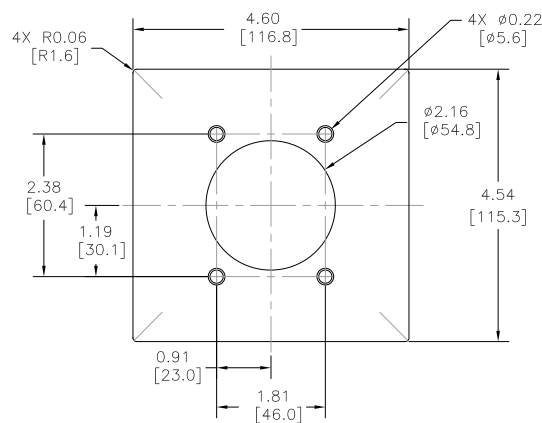
SS8



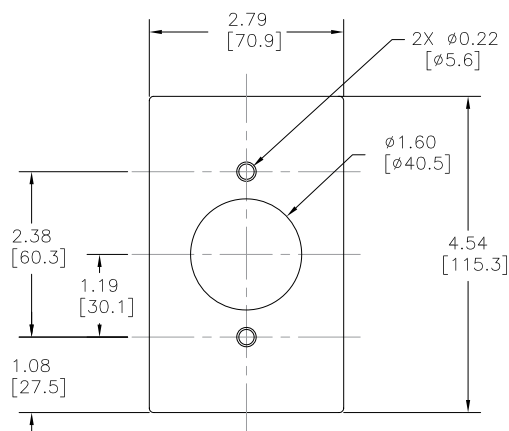
SS7



SS723



SS703



SS720