


# KS 71 Elements Quick Selection Guide

## STEP 1 - Optical Elements Quick Selection Guide

| Type of Light           | Part Number                | Color                                                                             | Operating Voltage                                | Price    | Type of Light        | Part Number              | Color  | Operating Voltage | Price    |
|-------------------------|----------------------------|-----------------------------------------------------------------------------------|--------------------------------------------------|----------|----------------------|--------------------------|--------|-------------------|----------|
| Incandescent Permanent* | <a href="#">64110000</a>   | Red                                                                               | Depends on bulb selection (bulb sold separately) | \$24.00  | Xenon Flashing Light | <a href="#">64310055</a> | Red    | 24VDC             | \$115.00 |
|                         | <a href="#">64120000</a>   | Green                                                                             |                                                  | \$24.00  |                      | <a href="#">64320055</a> | Green  |                   | \$115.00 |
|                         | <a href="#">64130000</a>   | Yellow                                                                            |                                                  | \$24.00  |                      | <a href="#">64330055</a> | Yellow |                   | \$115.00 |
|                         | <a href="#">64140000</a>   | Clear                                                                             |                                                  | \$24.00  |                      | <a href="#">64340055</a> | Clear  |                   | \$115.00 |
|                         | <a href="#">64150000</a>   | Blue                                                                              |                                                  | \$24.00  |                      | <a href="#">64350055</a> | Blue   |                   | \$115.00 |
| Incandescent Bulbs      | <a href="#">95584035</a>   |  | 24V AC/DC                                        | \$8.75   |                      | <a href="#">64310067</a> | Red    | 115VAC            | \$100.00 |
|                         | <a href="#">95584038</a>   |                                                                                   | 230VAC                                           | \$8.75   |                      | <a href="#">64320067</a> | Green  |                   | \$100.00 |
|                         | <a href="#">95584057</a>   |                                                                                   | 115V AC/DC                                       | \$8.75   |                      | <a href="#">64330067</a> | Yellow |                   | \$100.00 |
| LED Permanent           | <a href="#">64410075</a>   | Red                                                                               | 24V AC/DC                                        | \$58.00  |                      | <a href="#">64340067</a> | Clear  |                   | \$100.00 |
|                         | <a href="#">64420075</a>   | Green                                                                             |                                                  | \$58.00  |                      | <a href="#">64350067</a> | Blue   |                   | \$100.00 |
|                         | <a href="#">64430075</a>   | Yellow                                                                            |                                                  | \$58.00  | LED Blinking Light   | <a href="#">64411075</a> | Red    | 24V AC/DC         | \$77.00  |
|                         | <a href="#">64440075</a>   | Clear                                                                             |                                                  | \$89.00  |                      | <a href="#">64421075</a> | Green  |                   | \$77.00  |
|                         | <a href="#">64450075</a>   | Blue                                                                              |                                                  | \$89.00  |                      | <a href="#">64431075</a> | Yellow |                   | \$77.00  |
|                         | <a href="#">64445055**</a> | Multi                                                                             | 24VDC                                            | \$233.00 |                      | <a href="#">64441075</a> | Clear  |                   | \$101.00 |
|                         | <a href="#">64410067</a>   | Red                                                                               | 115VAC                                           | \$69.00  |                      | <a href="#">64451075</a> | Blue   |                   | \$101.00 |
|                         | <a href="#">64420067</a>   | Green                                                                             |                                                  | \$69.00  |                      | <a href="#">64411067</a> | Red    | 115VAC            | \$80.00  |
|                         | <a href="#">64430067</a>   | Yellow                                                                            |                                                  | \$69.00  |                      | <a href="#">64421067</a> | Green  |                   | \$80.00  |
|                         | <a href="#">64440067</a>   | Clear                                                                             |                                                  | \$101.00 |                      | <a href="#">64431067</a> | Yellow |                   | \$80.00  |
|                         | <a href="#">64450067</a>   | Blue                                                                              |                                                  | \$101.00 |                      | <a href="#">64441067</a> | Clear  |                   | \$112.00 |
| LED Flashing Light      | <a href="#">64412055</a>   | Red                                                                               | 24VDC                                            | \$140.00 |                      | <a href="#">64451067</a> | Blue   |                   | \$112.00 |
|                         | <a href="#">64422055</a>   | Green                                                                             |                                                  | \$140.00 | LED Rotating Light   | <a href="#">64413075</a> | Red    | 24V AC/DC         | \$129.00 |
|                         | <a href="#">64432055</a>   | Yellow                                                                            |                                                  | \$140.00 |                      | <a href="#">64423075</a> | Green  |                   | \$129.00 |
|                         | <a href="#">64442055</a>   | Clear                                                                             |                                                  | \$219.00 |                      | <a href="#">64433075</a> | Yellow |                   | \$129.00 |
|                         | <a href="#">64452055</a>   | Blue                                                                              |                                                  | \$219.00 |                      | <a href="#">64443075</a> | Clear  |                   | \$199.00 |
|                         |                            |                                                                                   |                                                  |          |                      | <a href="#">64453075</a> | Blue   |                   | \$199.00 |

\* Bulbs are required for permanent incandescent optical element.

\*\* The multicolor element can be combined with up to 2 additional signal elements.

## STEP 2 - Audible Elements Selection

| Part Number              | Description                                    | Voltage   | Tone Frequency | Max. Volume @ 1m | Price    |
|--------------------------|------------------------------------------------|-----------|----------------|------------------|----------|
| <a href="#">64580075</a> | Buzzer element                                 | 24V AC/DC | 1.75 kHz       | 85dB             | \$58.00  |
| <a href="#">64580077</a> |                                                | 115VAC    |                |                  | \$69.00  |
| <a href="#">64585055</a> | Multi-functional siren, external trigger       | 24VDC     | 1.6 / 3.4 kHz  | 100dB            | \$116.00 |
| <a href="#">64581055</a> | Siren element with self-adjusting sound output | 24VDC     | 2.5 kHz        | 100dB            | \$152.00 |

## STEP 3 - Terminal Elements Selection

| Part Number              | Description                                  | Mounting     | Price   |
|--------------------------|----------------------------------------------|--------------|---------|
| <a href="#">64082000</a> | Screw terminal with M3 clamps                | base bracket | \$31.50 |
| <a href="#">64080000</a> | Terminal element with CAGE CLAMP® technology |              | \$31.50 |
| <a href="#">64083000</a> | Screw terminal with M3 clamps                | tube         | \$31.50 |
| <a href="#">64081000</a> | Terminal element with CAGE CLAMP® technology |              | \$31.50 |

## STEP 4 - Tube Mounting/Accessories Selection

| Part Number              | Description                                   | Price   |
|--------------------------|-----------------------------------------------|---------|
| <a href="#">97584510</a> | Anodized tube, 100mm [3.94 in] long           | \$13.50 |
| <a href="#">97584025</a> | Anodized tube, 250mm [9.84 in] long           | \$17.00 |
| <a href="#">97584040</a> | Anodized tube, 400mm [15.75 in] long          | \$22.50 |
| <a href="#">97584060</a> | Anodized tube, 600mm [23.62 in] long          | \$30.00 |
| <a href="#">97584080</a> | Anodized tube, 800mm [31.49 in] long          | \$38.50 |
| <a href="#">97584003</a> | Anodized tube, 1000mm [39.37 in] long         | \$52.00 |
| <a href="#">96000018</a> | Tube with clamp                               | \$56.00 |
| <a href="#">96000025</a> | Adapter for single-hole mounting              | \$56.00 |
| <a href="#">97584010</a> | Base with integrated tube                     | \$28.00 |
| <a href="#">97584090</a> | Plastic base for 25mm [0.98 in] diameter tube | \$14.50 |
| <a href="#">97584091</a> | Metal base for 25mm [0.98 in] diameter tube   | \$22.50 |
| <a href="#">96000031</a> | Plastic tube for foldaway base                | \$9.50  |
| <a href="#">97584002</a> | Adapter for tube mounting                     | \$10.50 |
| <a href="#">96000004</a> | Cable gland for surface mounting              | \$6.00  |
| <a href="#">96000030</a> | Foldaway base                                 | \$60.00 |

## STEP 5 - Contact Boxes & Brackets Selection

| Mounting Option  | Part Number              | Description                                        | Price   |
|------------------|--------------------------|----------------------------------------------------|---------|
| Plain Base Mount | <a href="#">97584001</a> | Contact box with side exit cable                   | \$20.00 |
|                  | <a href="#">96000002</a> | Bracket for base mounting                          | \$18.00 |
|                  | <a href="#">97584085</a> | Bracket for 1-sided mounting                       | \$15.00 |
|                  | <a href="#">97584086</a> | Bracket for 2-sided mounting                       | \$17.00 |
| Tube Base Mount  | <a href="#">97584001</a> | Contact box with side exit cable                   | \$20.00 |
|                  | <a href="#">97584004</a> | Contact box w/ magnetic base and side cable exit   | \$55.00 |
|                  | <a href="#">96000014</a> | Bracket for base mounting w/ concealed cable entry | \$22.00 |
|                  | <a href="#">96000001</a> | Bracket for tube mounting                          | \$18.00 |

# KS 71 Optical Elements Specifications

## Optical Elements Technical Specifications

| Part Number              | Color  | Drawing Link        | Description                                                   | Voltage                                                    | Current                                           | Starting Current | Operating Temp/ Protection        | Life Duration           | Flash Frequency          | Housing Material | Weight g [oz] |
|--------------------------|--------|---------------------|---------------------------------------------------------------|------------------------------------------------------------|---------------------------------------------------|------------------|-----------------------------------|-------------------------|--------------------------|------------------|---------------|
| <a href="#">64110000</a> | Red    | <a href="#">PDF</a> | Incandescent Permanent Light Element with B15d Bayonet Socket | 12-240 V Depends on bulb selection. (bulb sold separately) | Depends on bulb selection. (bulb sold separately) | -                | -20 to 60°C [-4 to 140°F]<br>IP65 | up to 5,000h            | -                        | Polycarbonate    | 55 [1.94]     |
| <a href="#">64120000</a> | Green  | <a href="#">PDF</a> |                                                               |                                                            |                                                   |                  |                                   |                         |                          |                  |               |
| <a href="#">64130000</a> | Yellow | <a href="#">PDF</a> |                                                               |                                                            |                                                   |                  |                                   |                         |                          |                  |               |
| <a href="#">64140000</a> | Clear  | <a href="#">PDF</a> |                                                               |                                                            |                                                   |                  |                                   |                         |                          |                  |               |
| <a href="#">64150000</a> | Blue   | <a href="#">PDF</a> | LED Permanent Light Element                                   | 24V AC/DC                                                  | max. 30mA                                         | max. 500mA       | -20 to 50°C [-4 to 122°F]<br>IP65 | up to 100,000h          | -                        | Polycarbonate    | 58 [2.05]     |
| <a href="#">64420075</a> | Green  | <a href="#">PDF</a> |                                                               |                                                            | max. 25mA                                         |                  |                                   |                         |                          |                  |               |
| <a href="#">64430075</a> | Yellow | <a href="#">PDF</a> |                                                               |                                                            | max. 30mA                                         |                  |                                   |                         |                          |                  |               |
| <a href="#">64440075</a> | Clear  | <a href="#">PDF</a> |                                                               |                                                            | max. 25mA                                         |                  |                                   |                         |                          |                  |               |
| <a href="#">64450075</a> | Blue   | <a href="#">PDF</a> |                                                               |                                                            | max. 25mA                                         |                  |                                   |                         |                          |                  |               |
| <a href="#">64445055</a> | Multi  | <a href="#">PDF</a> |                                                               | 24VDC                                                      | max. 120mA                                        |                  |                                   | up to 50,000h           |                          |                  | 63 [2.22]     |
| <a href="#">64410067</a> | Red    | <a href="#">PDF</a> |                                                               | 115VAC                                                     | max. 20mA                                         | -                | -20 to 50°C [-4 to 122°F]<br>IP65 | up to 100,000h          | -                        | Polycarbonate    | 58 [2.05]     |
| <a href="#">64420067</a> | Green  | <a href="#">PDF</a> |                                                               |                                                            |                                                   |                  |                                   |                         |                          |                  |               |
| <a href="#">64430067</a> | Yellow | <a href="#">PDF</a> |                                                               |                                                            |                                                   |                  |                                   |                         |                          |                  |               |
| <a href="#">64440067</a> | Clear  | <a href="#">PDF</a> |                                                               |                                                            |                                                   |                  |                                   |                         |                          |                  |               |
| <a href="#">64450067</a> | Blue   | <a href="#">PDF</a> |                                                               |                                                            |                                                   |                  |                                   |                         |                          |                  |               |
| <a href="#">64412055</a> | Red    | <a href="#">PDF</a> | LED Flashing Light Element                                    | 24VDC                                                      | 35mA                                              | max. 500mA       | -20 to 50°C [-4 to 122°F]<br>IP65 | up to 50,000h           | 1Hz on for 2x10 ms       | Polycarbonate    | 75 [2.65]     |
| <a href="#">64422055</a> | Green  | <a href="#">PDF</a> |                                                               |                                                            |                                                   |                  |                                   |                         |                          |                  |               |
| <a href="#">64432055</a> | Yellow | <a href="#">PDF</a> |                                                               |                                                            |                                                   |                  |                                   |                         |                          |                  |               |
| <a href="#">64442055</a> | Clear  | <a href="#">PDF</a> |                                                               |                                                            |                                                   |                  |                                   |                         |                          |                  |               |
| <a href="#">64452055</a> | Blue   | <a href="#">PDF</a> |                                                               |                                                            |                                                   |                  |                                   |                         |                          |                  |               |
| <a href="#">64310055</a> | Red    | <a href="#">PDF</a> | Xenon Flashing Light Element                                  | 24VDC                                                      | 125mA                                             | max. 500mA       | -20 to 50°C [-4 to 122°F]<br>IP65 | up to 4,000,000 flashes | 1Hz on for 10 ms         | Polycarbonate    | 73 [2.57]     |
| <a href="#">64320055</a> | Green  | <a href="#">PDF</a> |                                                               |                                                            |                                                   |                  |                                   |                         |                          |                  |               |
| <a href="#">64330055</a> | Yellow | <a href="#">PDF</a> |                                                               |                                                            |                                                   |                  |                                   |                         |                          |                  |               |
| <a href="#">64340055</a> | Clear  | <a href="#">PDF</a> |                                                               |                                                            |                                                   |                  |                                   |                         |                          |                  |               |
| <a href="#">64350055</a> | Blue   | <a href="#">PDF</a> |                                                               |                                                            |                                                   |                  |                                   |                         |                          |                  |               |
| <a href="#">64310067</a> | Red    | <a href="#">PDF</a> |                                                               | 115VAC                                                     | 22mA                                              | -                | -20 to 50°C [-4 to 122°F]<br>IP65 | up to 4,000,000 flashes | 1Hz on for 10 ms         | Polycarbonate    | 74 [2.61]     |
| <a href="#">64320067</a> | Green  | <a href="#">PDF</a> |                                                               |                                                            |                                                   |                  |                                   |                         |                          |                  |               |
| <a href="#">64330067</a> | Yellow | <a href="#">PDF</a> |                                                               |                                                            |                                                   |                  |                                   |                         |                          |                  |               |
| <a href="#">64340067</a> | Clear  | <a href="#">PDF</a> |                                                               |                                                            |                                                   |                  |                                   |                         |                          |                  |               |
| <a href="#">64350067</a> | Blue   | <a href="#">PDF</a> |                                                               |                                                            |                                                   |                  |                                   |                         |                          |                  |               |
| <a href="#">64411075</a> | Red    | <a href="#">PDF</a> | LED Blinking Light Element                                    | 24V AC/DC                                                  | max. 30mA                                         | max. 500mA       | -20 to 50°C [-4 to 122°F]<br>IP65 | up to 100,000h          | 1Hz on for 550 ms        | Polycarbonate    | 58 [2.05]     |
| <a href="#">64421075</a> | Green  | <a href="#">PDF</a> |                                                               |                                                            | max. 25mA                                         |                  |                                   |                         |                          |                  |               |
| <a href="#">64431075</a> | Yellow | <a href="#">PDF</a> |                                                               |                                                            | max. 30mA                                         |                  |                                   |                         |                          |                  |               |
| <a href="#">64441075</a> | Clear  | <a href="#">PDF</a> |                                                               |                                                            | max. 25mA                                         |                  |                                   |                         |                          |                  |               |
| <a href="#">64451075</a> | Blue   | <a href="#">PDF</a> |                                                               |                                                            | max. 25mA                                         |                  |                                   |                         |                          |                  |               |
| <a href="#">64411067</a> | Red    | <a href="#">PDF</a> |                                                               | 115VAC                                                     | max. 20mA                                         | -                | -20 to 50°C [-4 to 122°F]<br>IP65 | up to 100,000h          | 1Hz on for 550 ms        | Polycarbonate    | 58 [2.05]     |
| <a href="#">64421067</a> | Green  | <a href="#">PDF</a> |                                                               |                                                            |                                                   |                  |                                   |                         |                          |                  |               |
| <a href="#">64431067</a> | Yellow | <a href="#">PDF</a> |                                                               |                                                            |                                                   |                  |                                   |                         |                          |                  |               |
| <a href="#">64441067</a> | Clear  | <a href="#">PDF</a> |                                                               |                                                            |                                                   |                  |                                   |                         |                          |                  |               |
| <a href="#">64451067</a> | Blue   | <a href="#">PDF</a> |                                                               |                                                            |                                                   |                  |                                   |                         |                          |                  |               |
| <a href="#">64413075</a> | Red    | <a href="#">PDF</a> | LED Rotating Light Element                                    | 24V AC/DC                                                  | max. 40mA                                         | max. 500mA       | -20 to 50°C [-4 to 122°F]<br>IP65 | up to 100,000h          | 120 rotations per minute | Polycarbonate    | 67 [2.36]     |
| <a href="#">64423075</a> | Green  | <a href="#">PDF</a> |                                                               |                                                            |                                                   |                  |                                   |                         |                          |                  |               |
| <a href="#">64433075</a> | Yellow | <a href="#">PDF</a> |                                                               |                                                            |                                                   |                  |                                   |                         |                          |                  |               |
| <a href="#">64443075</a> | Clear  | <a href="#">PDF</a> |                                                               |                                                            |                                                   |                  |                                   |                         |                          |                  |               |
| <a href="#">64453075</a> | Blue   | <a href="#">PDF</a> |                                                               |                                                            |                                                   |                  |                                   |                         |                          |                  |               |



### Terminal Pin Activation of Multi-Color LED Permanent Light Element

| Pin 1 | Pin 2 | Pin 3 | Function  |
|-------|-------|-------|-----------|
| 24V   | -     | -     | Red       |
| -     | 24V   | -     | Green     |
| 24V   | 24V   | -     | Yellow    |
| -     | -     | 24V   | Blue      |
| 24V   | 24V   | 24V   | White     |
| 24V   | -     | 24V   | Violet    |
| -     | 24V   | 24V   | Turquoise |

### Bulbs for Incandescent Permanent Optical Element

| Part Number              | Description                                      | Wattage | Voltage | Life Duration |
|--------------------------|--------------------------------------------------|---------|---------|---------------|
| <a href="#">95584035</a> | Bulb for incandescent light BA15d Bayonet Socket | 5W      | 24VDC   | up to 5,000h  |
| <a href="#">95584038</a> |                                                  |         | 230VAC  |               |
| <a href="#">95584057</a> |                                                  |         | 115VAC  |               |



# Configuring Your KombiSIGN 71 Stack Light

## STEP 1

Select the required optical elements for your application

## STEP 2

Select the optional audible elements for your application



**Optical Signal Elements**

- Incandescent Permanent Light
- LED Permanent Light
- LED Flashing Light
- LED Blinking Light
- LED Rotating Light
- Xenon Flashing Light

**Audible Signal Elements**

- Buzzer Element
- Siren Element

### Plain Base Mount

### Tube Base Mount

## STEP 3

Select the correct terminal element for your mounting option (includes cap)



**Plain Base Mount**

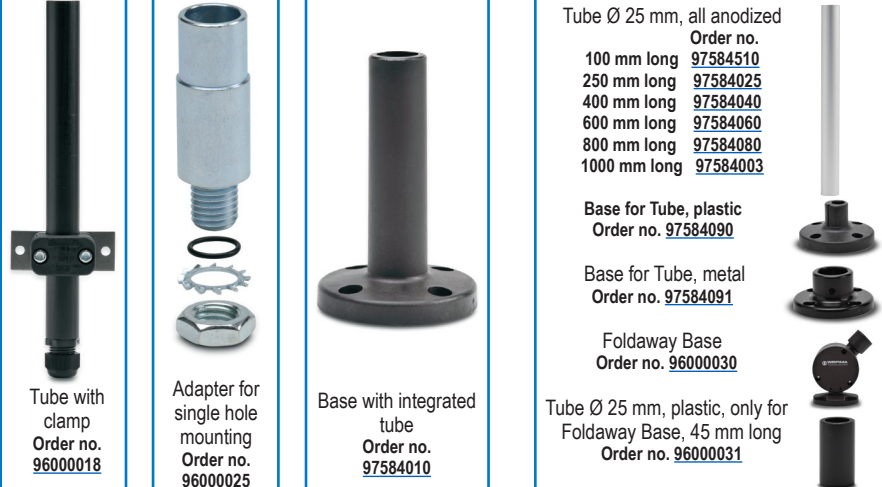
- Screw terminal  
Order no. [64082000](#)
- CAGE CLAMP® terminal  
Order no. [64080000](#)

**Tube Base Mount**

- Screw terminal  
Order no. [64083000](#)
- CAGE CLAMP® terminal  
Order no. [64081000](#)

## STEP 4

Where appropriate, select a base and the desired tube length (only for tube mounting)



**Plain Base Mount**

- Tube with clamp  
Order no. [96000018](#)
- Adapter for single hole mounting  
Order no. [96000025](#)
- Base with integrated tube  
Order no. [97584010](#)

**Tube Base Mount**

- Tube Ø 25 mm, all anodized  
Order no. [97584510](#)  
100 mm long [97584025](#)  
250 mm long [97584040](#)  
400 mm long [97584060](#)  
600 mm long [97584080](#)  
800 mm long [97584090](#)  
1000 mm long [97584003](#)
- Base for Tube, plastic  
Order no. [97584090](#)
- Base for Tube, metal  
Order no. [97584091](#)
- Foldaway Base  
Order no. [96000030](#)
- Tube Ø 25 mm, plastic, only for Foldaway Base, 45 mm long  
Order no. [96000031](#)

## STEP 5

Where appropriate, select the bracket and the contact box.



**Plain Base Mount**

- Contact box with side cable exit  
Order no. [97584001](#)
- Bracket for base mounting  
Order no. [96000002](#)
- Bracket for 1-sided mounting  
Order no. [97584085](#)
- Bracket for 2-sided mounting  
Order no. [97584086](#)

**Tube Base Mount**

- Contact box with side cable exit  
Order no. [97584001](#)
- Contact box with magnetic base and side cable exit  
Order no. [97584004](#)
- Bracket for base mounting with concealed cable entry  
Order no. [96000014](#)
- Bracket for tube mounting  
Order no. [96000001](#)

# Werma Modular Stack Lights Overview



# WERMA

S I G N A L T E C H N I K

## Description

WERMA's modular stack light system offers total choice and flexibility as it allows for a completely free combination of optical and audible signal elements. The bayonet mechanism allows elements to be mechanically and electrically connected within seconds.

This means that elements can be safely and easily changed (contact-voltage proof) without the need for tools.

Typical product applications include; machine tools, packaging machines, conveyor systems, printing machines, loading docks, retail centers (check outs), queuing indicators for theme parks, and more.

## Product highlights:

- Signal elements in common voltages (24V DC and 115V AC)
- Modular system allows combination as required
- Two different sizes (70 and 50 mm diameter)
- Five colors available
- Wide range of audible elements
- Diverse and flexible solutions

## Simple assembly with bayonet mechanism

- Simple mounting and removal of the elements
- New combinations at the twist of a hand
- Tool-free bulb change
- Position marks to guide alignment





# Werma Stack Lights Family Overview

## KombiSIGN 71

Modular IP65-rated stack light system with 70 mm diameter for use in standard applications.

KS 71 stack lights are available in 5 colors and multiple light effects (permanent, blinking, rotating, flashing). Multiple light sources (incandescent, LED, Xenon tube) and a wide variety of mountings are available. Combine up to 5 elements per terminal. Various terminal design choices are available as well as multiple voltages and audible elements up to 105 dB.

### KS 71 Terminal Elements



Screw terminals



CAGE CLAMP® terminals

## KombiSIGN 50

Modular IP54-rated stack light system with 50 mm diameter for use on smaller machines.

KS 50 stack lights are available in 5 colors with either permanent or blinking light effects in multiple voltages. A choice of incandescent or LED light sources is available as well as an 80 dB audible element. Elements can be combined in a variety of mountings, up to 4 elements per mounting for 360° of visibility.

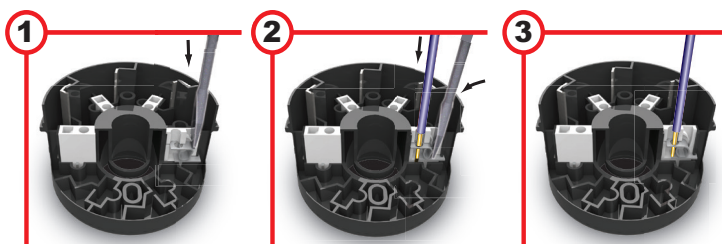
### KS 50 Terminal Element



Screw terminal

## Safe and Efficient Connection Thanks to CAGE CLAMP® Technology

Terminal elements with CAGE CLAMP® technology enable leads to be quickly and easily wired, guaranteeing a secure and reliable contact.



Insert screwdriver at a slight angle into opening as far as possible.

Open spring-loaded clamp with the help of the screwdriver and insert wire as far as possible.

Remove screwdriver - the wire is firmly clamped.

CAGE CLAMP® is a registered trademark of WAGO Kontakttechnik GmbH.